

# space-saving Workshop

## Materials & Hardware

### END CABINET

A Sides (2)	2030 x 580 x 19 Ply.
B Top/Fixed Shelf (2)	940 x 580 x 19 Ply.
C Divider (1)	960 x 561 x 19 Ply.
D Back (1)	960 x 940 x 19 Ply.
E Small Shelf (1)	561 x 460 x 19 Ply.
F Rails (2)	940 x 90 x 19
G Tray (1)	555 x 450 x 19 Ply.
H Tray Front (1)	476 x 75 x 19
I Tray Cleat (1)	330 x 38 x 38
J Tray Lock (1)	498 x 38 x 19

### CENTRE CABINET

K Sides (2)	2030 x 580 x 19 Ply.
L Top/Fixed Shelf (2)	1200 x 580 x 19 Ply.
M Divider (1)	760 x 561 x 19 Ply.
N Back (1)	1200 x 760 x 19 Ply.
O Adjustable Shelves (3)	590 x 350 x 19 Ply.
P Rails (2)	1200 x 90 x 19

### WORKBENCH

Q Sides (2)	875 x 580 x 19 Ply.
R Top/Bottom (2)	1130 x 580 x 19 Ply.
S Fixed Shelf (1)	1130 x 561 x 19 Ply.
T Divider (1)	561 x 530 x 19 Ply.
U Back (1)	1130 x 747 x 19 Ply.
V Adjustable Shelves (2)	555 x 335 x 19 Ply.
W Rail (1)	1130 x 90 x 19
X Drawer Front/Back (4)	517 x 90 x 12
Y Drawer Sides (4)	560 x 90 x 12
Z Drawer Bottom (2)	548 x 517 x 6 Ply.
AA False Front (2)	570 x 165 x 19
BB Benchtop (1)	1200 x 680 x 38
CC Vice Spacer (1)	180 x 100 x 27
DD Jaw Liners (2)	180 x 65 x 12

### ROUTER TABLE

EE Sides (2)	600 x 90 x 19 Ply.
FF Base (1)	574 x 190 x 19 Ply.
GG Back (1)	600 x 574 x 19 Ply.
HH Top/Long Shelf (2)	574 x 70 x 19 Ply.
II Short Shelves (2)	310 x 70 x 19 Ply.
JJ Fence Rests (2)	70 x 19 x 19
KK Arms (2)	1075 x 50 x 19
LL Tabletop (1)	650 x 430 x 19 Ply.
MM Front Rail (1)	650 x 50 x 19
NN Fillers (2)	411 x 100 x 19 Ply.
OO Fence Base (1)	560 x 50 x 19 Ply.
PP Fence Face (1)	560 x 75 x 19 Ply.

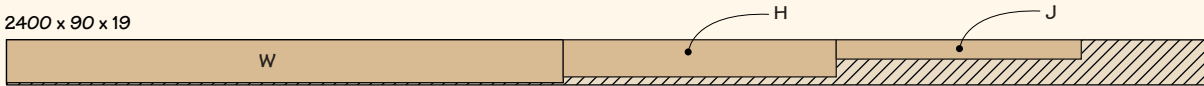
- (136) 8g x 38mm c/s Woodscrews
- (28) 8g x 25 c/s Woodscrews
- (2) ¼" Whit a 64mm Hex Bolts
- (6) ¼" Washers
- (2) ¼" Whit Lock Nuts
- (2) 165mm Utility Pulls
- (1 pr.) 560mm Full-Ext. Drawer Slides
- (1) 900mm T-Track
- (2) ¼" Whit x 50mm Flange Bolts
- (2) ¼" Whit Knob w/Insert
- (3) Toggle Clamps
- (2 pr.) 560mm Full Extension Drawer Slides
- (1) 7" Bench Vise
- (6) Heavy-Duty Lifting Levellers
- (1) 50mm Slide Bolt
- (2) 19mm-dia. Nylon Nail-On Glides
- (4) 5/16" x 3" Lag Screws w/Washers

## Cutting Diagram - Hardwood or Pine

2400 x 90 x 19 (2 BOARDS)



2400 x 90 x 19



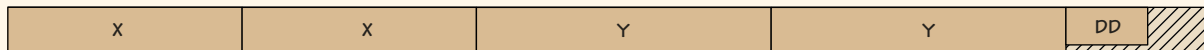
2400 x 90 x 19



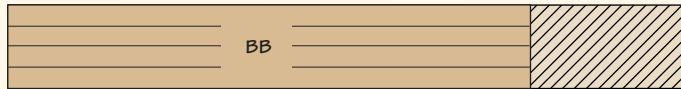
1800 x 190 x 19



2400 x 90 x 12 (2 BOARDS)

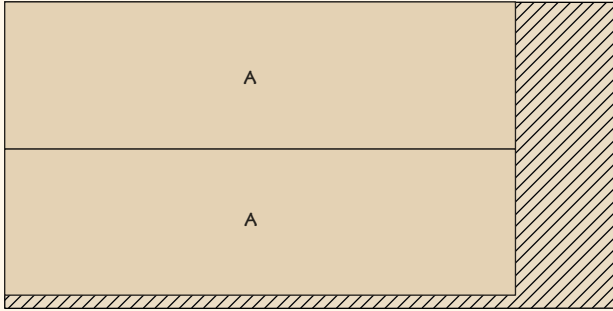


1200 x 190 x 19 (9 BOARDS) ripped into 40mm strips, laminated and machined to 38mm

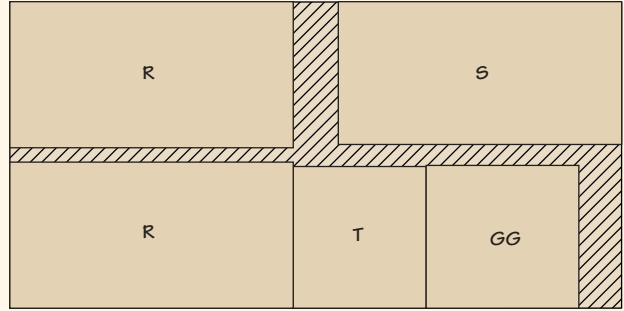


## Cutting Diagram - Plywood

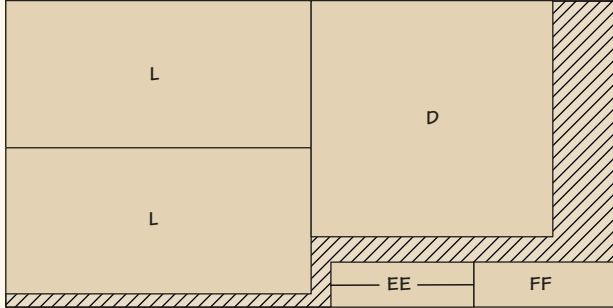
2400 x 1200 x 19mm C Grade Construction Ply



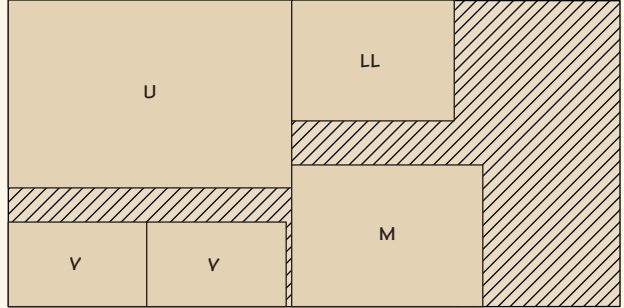
2400 x 1200 x 19mm C Grade Construction Ply



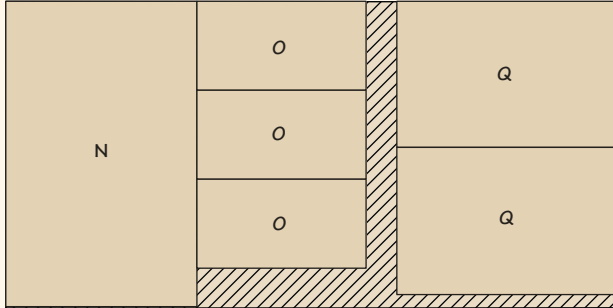
2400 x 1200 x 19mm C Grade Construction Ply



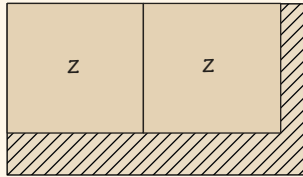
2400 x 1200 x 19mm C Grade Construction Ply



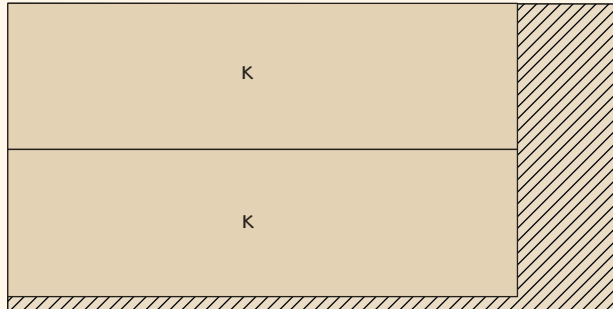
2400 x 1200 x 19mm C Grade Construction Ply



1200 x 600 x 6mm Ply



2400 x 1200 x 19mm C Grade Construction Ply



2400 x 1200 x 19mm C Grade Construction Ply

