

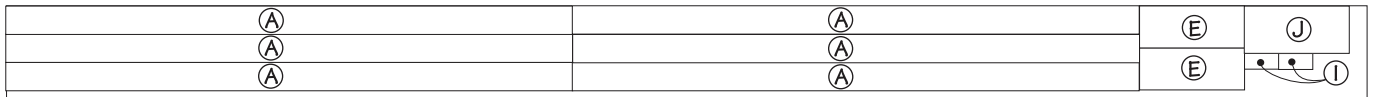
Fold-down Workstation

Hardware

- (2) 5/8" I.D. x 3/4" O.D. Flange Bearings
 - (2) 3/8" T-Nuts
 - (2) 3/8" Leg Levellers
 - (12) 8g x 90mm c/s Woodscrews
 - (8) 8g x 65mm c/s Woodscrews
 - (54) 8g x 32mm c/s Woodscrews
 - (8) 8g x 75mm c/s Woodscrews
 - (2 Pr.) 3" x 2" Butt Hinges
 - (2) 430 x 50 x 3mm Steel Plate
 - (2) 450 x 16mm-dia Steel Rod
 - (1) 48 x 12mm-dia Spring
 - (1) 3" x 2" Loose Pin Hinge
 - (2) 90mm Sash Pulls (w/screws)
 - (2 Pr.) 2" x 15/8" Hinges w/screws
 - (2) Magnetic Catches & Strike Plates (w/screws)
 - (12) 1/4" Shelf Pins
 - (1) Vice & Handle w/mounting hardware (Opt.)
 - (2) Magnetic Tool Bars w/screws (Opt.)
- Note: Hardware list does not include hardware for mounting workstation, tool rack, or cabinet to wall.

THE WORKSTATION IS DESIGNED OUT OF RE-CLAIMED DOUGLAS FIR SOURCED FROM A RECYCLED BUILDING MATERIALS YARD MOST OF THE FIR WAS THEN MACHINED DOWN TO 90 x 35mm.

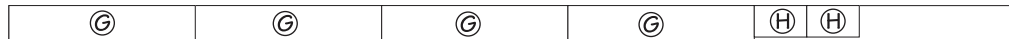
3600 x 240 x 50 Douglas Fir (three boards from a recycled building materials yard is the way to go)



2400 x 90 x 35 (two boards)



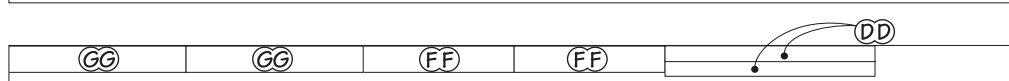
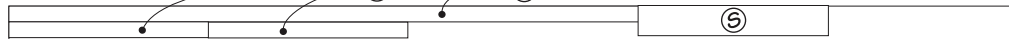
2400 x 90 x 35



2400 x 90 x 35 (two boards)



2400 x 90 x 35



2400 x 90 x 35 (two boards)



Materials

Workbench

A	Top (1)	1520 x 595 x 65
B	Side Panels (2)	480 x 235 x 38mm Ply.
C	Edging	2400 x 38 x 19-Rgh.
D	Stretchers (2)	1525 x 90 x 35
E	Corner Braces (4)	250 x 90 x 35
F	Legs (2)	800 x 70 x 70
G	Rails (4)	450 x 90 x 35
H	Spacers (2)	125 x 75 x 19-Rhg
I	Stops (2)	50 x 38 x 25-Rgh.
J	Face Block (1)	250 x 115 x 75

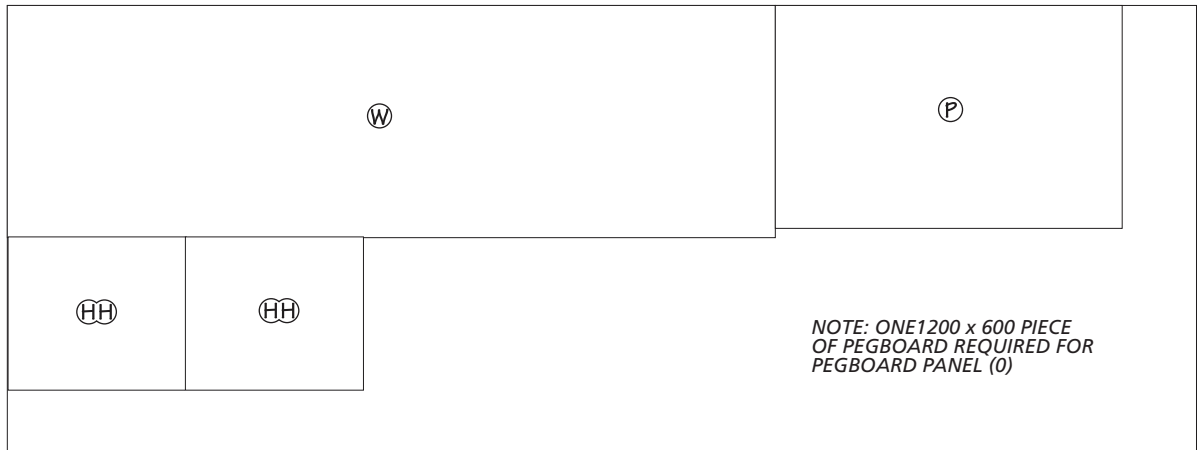
Tool Rack

K	Top Rail (1)	1550 x 38 x 35
L	Bottom Rail (1)	1526 x 90 x 35
M	End Stiles (2)	510 x 38 x 35
N	Centre Stiles (2)	485 x 38 x 35
O	Pegboard Panel (1)	748 x 458 x 6
P	Hardboard Panel (1)	748 x 458 x 6
Q	Filler Panel (1)	725 x 435 x 19mm Ply.
R	Filler Strip (1)	65 x 12 x 6
S	Benchtop Stop (1)	463 x 63 x 35

Wall Cabinet

T	Top/Bottom (2)	1578 x 231 x 19 Ply.
U	Sides (2)	510 x 231 x 19 Ply.
V	Dividers (2)	465 x 225 x 19 Ply.
W	Back (1)	1566 x 477 x 6 Msnt.
X	Side Shelves (2)	516 x 200 x 19 Ply.
Y	Center Shelf (1)	478 x 200 x 19 Ply.
Z	Side Edging (2)	516 x 19 x 19
AA	Centre Edging (1)	478 x 19 x 19
BB	Cleats (2)	514 x 90 x 19 Ply.
CC	Frame Rails (6)	480 x 38 x 19
DD	Frame Stiles (4)	510 x 38 x 19
EE	Filler Strip (1)	1566 x 38 x 19
FF	Door Rails (4)	432 x 38 x 19
GG	Door Stiles (4)	360 x 38 x 19
HH	Door Panels (2)	312 x 362 x 6 Msnt.

2400 x 1200 x 6mm Masonite



2400 x 1200 x 19mm Plywood

