

Materials, Supplies, & Cutting Diagram No. 48

Craftsman-style Grandfather Clock

A	Case Front Stiles (2)	1950 x 115 x 25	Z	Upper Door Stiles (2)	402 x 75 x 25
B	Case Front Top/Middle Rail (2)	457 x 32 x 25	AA	Upper Door Rails (2)	326 x 108 x 25
C	Case Front Bottom Rail (1)	457 x 127 x 25	BB	Lower Door Glass Stop (2)	1525 x 6 x 6 rgh.
D	Case Back Stiles (2)	1950 x 115 x 25	CC	Upper Door Glass Stop (2)	560 x 6 x 6 rgh.
E	Case Back Top Rail (1)	457 x 75 x 25	DD	Inner Frame Sides (2)	438 x 50 x 16
F	Case Back Middle Rail (1)	457 x 100 x 25	EE	Inner Frame Top/Bottom (2)	336 x 50 x 16
G	Case Back Bottom Rail (1)	257 x 200 x 25	FF	Outer Frame Sides (2)	438 x 32 x 25
H	Case Back Upper Panel (1)	422 x 350 x 12.5	GG	Outer Frame Top/Bottom (2)	387 x 32 x 25
I	Case Back Lower Panel (1)	1200 x 422 x 12.5	HH	Clock Face Panel (1)	387 x 387 x 12.5
J	Case Side Stiles (4)	1951 x 60 x 25	II	Movement Beams (2)	508 x 32 x 18 rgh.
K	Case Side Top Rails (2)	285 x 75 x 25	JJ	Beam Cleats (2)	368 x 32 x 25
L	Case Side Middle Rails (2)	285 x 100 x 25			
M	Case Side Bottom Rails (2)	285 x 200 x 25			
N	Case Side Upper Panels (2)	346 x 282 x 12.5			
O	Case Side Lower Panels (2)	1210 x 285 x 12.5			
P	Case Bottom (1)	574 x 375 x 18			
Q	Bottom Cleat (1)	563 x 18 x 18			
R	Lower Top Panel (1)	483 x 394 x 12.5			
S	Lower Top Panel Front Border (1)	648 x 90 x 12.5			
T	Lower Top Panel Side Border (2)	476 x 94 x 12.5			
U	Upper Top Panel (1)	648 x 476 x 12.5			
V	Upper Top Panel Front Border (1)	686 x 25 x 12.5			
W	Upper Top Panel Side Border (2)	495 x 25 x 12.5			
X	Lower Door Stiles (2)	1275 x 75 x 25			
Y	Lower Door Rails (2)	325 x 75 x 1			

- (2 Pr.) 50mm Ball-Tipped Butt Hinges w/Screws
- (2) Pendant Pulls
- (4) Brass Bullet Catches
- (1) 6mm-thick Bevelled Glass (1155 x 267)
- (1) 6mm-thick Bevelled Glass (330mm dia.)
- (1) .020 Ga. Sheet Brass (610 x 610)
- (1 Set) Clock Face Numbers
- (1 Pk.) Upholstery Tacks for Clock Face Markers
- (1) Mechanical Clock Movement
- (11) 8g x 50 c/s Woodscrews
- (2) 8g x 36 c/s Woodscrews
- (4) 8g x 25 Brass c/s Woodscrews
- (3) 8g x 32 c/s Woodscrews
- (1 Pk.) 12mm Wire Brads

2400 x 140 x 25 Silky Oak



2400 x 140 x 25 Silky Oak



2400 x 140 x 25 Silky Oak



2400 x 140 x 25 Silky Oak



2400 x 230 x 25 Silky Oak



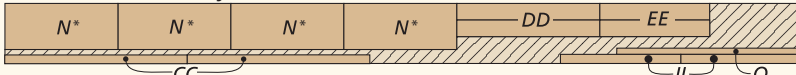
2400 x 140 x 25 Silky Oak



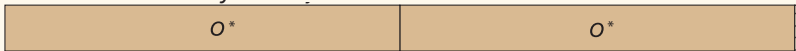
2400 x 165 x 25 Silky Oak



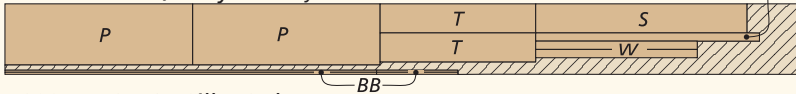
2400 x 190 x 25 Silky Oak



2400 x 153 x 25 Silky Oak



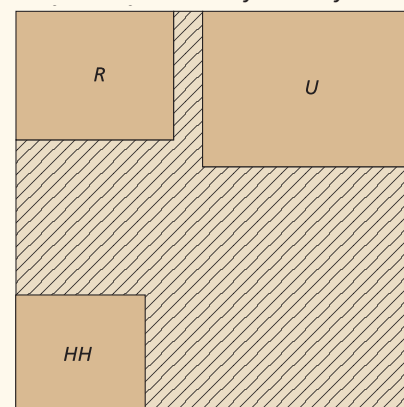
2400 x 216 x 25 Silky Oak



1800 x 153 x 25 Silky Oak



1200 x 1200 12.5 Silky Oak Plywood



Panels H, I, N, O, R, U & HH could be cut out of a 2400 x 1200 x 8mm Silky Oak sheet of plywood