

INTRODUCING THE
Cord/Cordless
Senior

5 Star
SERIES
pro barbershop
products
★★★★
★★



WAHL®
PROFESSIONAL



Introducing...

The 5-Star Cord/Cordless Senior

The cornerstone
(must have) tool for
all professionals.



Key Features

-
- Precision 5-Star SMOOTH BOTTOM FADE BLADE
 - ADJUSTABLE TAPER LEVER for blending
 - Classic heavy-duty ALUMINUM BOTTOM CASE for years of durable wear.
 - Sleek design for comfort and less wrist stress while cutting. Ideal for smaller hands and maximum flexibility.
 - Powerful rotary motor supporting higher rpm for INCREASED BLADE SPEED and higher stall torque or CONSISTENT POWER to tackle thick hair
 - Includes PREMIUM GUIDE COMBS: ½, 1 & 1 ½" (flat top styling comb also included) to ensure a seamless blend
 - 70-minute run time. Cord/Cordless for continuous use



5-Star Smooth Bottom Blade for Precision Fades

**THE BLADE
DESIGNED WITH
PERFECTION
IN MIND**



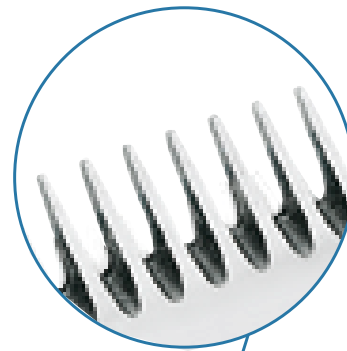
Features

- Thin bottom blade with 13° bevel and extra-long teeth to pick-up and separate hair.
- Adjusts to zero-overlap for optimal closeness.
- Chrome Plated for rust resistance.



Benefits

- Thin, flat bottom provides ultra-close cutting for extreme results.
- Ideal for on scalp tapering/ fading, free-hand, sculpting (flat tops, beards (and skimming techniques).



The difference between Cordless Magic and Cordless Senior



Cordless Magic Clip



Stagger Tooth Blade

- The Cordless Magic Clip top cutting blade is the Stagger tooth blade (alternating teeth, different lengths) which provides two cutting paths a slightly textured result (similar to a paintbrush) which aids in blending (the second alternating 'staggered' tooth picks up the hair that was missed by the first path).



Cordless 5-Star Senior



2191 Precision Fade Blade

- There is a need for the extreme precision of this 2191 blade in the barber's world.
- The standard 2191 (fade blade) has one cutting path resulting in a very blunt, straight, clean, precision cut. This blade is must have staple for all barber's tools. It is powered by a rotary motor the blades operate in a liner cutting motion. The zero-overlap blade slide mechanism is exclusive to the 5-Star line, it can truly be adjusted to zero overlap.

Motor & Stall Torque

New Cordless Senior motor provides more power:

- 26% faster motor speed that is higher than the Magic Clip's motor.
- 15% faster blade cutting speed, Cordless Senior clipper has of 6400-6900 rpm range compared to the Magic Clip's blade speed range of 5700-5900 rpm.
Using a higher rpm motor improves cut performance. If Blade speed is faster the blades can cut hair at a faster rate.
- 48% greater motor stall torque that is higher than the Magic Clip motor.
Using a higher stall torque motor improves cut performance since blades will resist stopping or losing speed while cutting through thick hair.

Premium Cutting Guides



Features

- Durable Metal Tabs with Glass & Mineral-Filled Plastic.
- Rounded Comb Teeth.







Benefits


- Metal tab securely fit onto blade safeguarding against popping off.
- Durable and rigid material will not warp.
- Separates the hair ensuring a more even cut.
- Glides through the hair providing your clientele a comfortable experience.



Appendix product comparison

| PRODUCT | BLADE | RPM SPEED | RUN TIME | ATTACHMENTS | PURPOSE |
|---|--|-------------------|-------------------------------|--|--|
|  <p>Cordless Senior</p> | Precision Blade (fade blade) | 6,400 - 6,700 rpm | 70 min | 3 premium attachment combs: # ½, 1, 1 ½ | On-scalp fading with extreme power and blade speed, precision results maximum flexibility, minimal physical stress |
|  <p>Cordless Magic Clip</p> | Fixed, chrome blade with taper lever (stagger tooth top cutting blade) | 5,500 rpm | 90 min | 8 attachment combs: # ½, 1, 1 ½, 2, 3, 4, 6, 8 | On-scalp fading with maximum run time, flexibility and blending capabilities, minimal physical stress |
|  <p>Cordless Super Taper</p> | Fixed, chrome blade with taper lever (21 degree angle blade) | 5,500 rpm | 90 min | 4 attachment combs: # 1, 2, 3, 4 | On or off-scalp traditional tapering and fading. Maximum flexibility, minimal physical stress |
|  <p>Legend</p> | Fixed, Chrome Blade with taper lever (extended blade slide mechanism exclusive only to the Legend) | 6,000 rpm | Continuous operation (corded) | 8 premium attachment combs: # ½, 1, 1 ½, 2, 3, 4, 6, 8 | Extended blade slide mechanism providing a wider fade range supported by the taper lever. *Note: if adjusted to zero overlap the extended blade slide feature is nullified |

- The C/C Senior motor has optimal specs for cutting performance
- Blade speed rpms = blade rpms

 **NOTE:** the run time is 70 minutes. The reduction in run time is necessary to support the added blade speed and over all increased power providing the most advantageous results.



5 Star
SERIES
pro barbershop
products
★★★★★



Welcome to the
5-Star family





WAHL®
P R O F E S S I O N A L

