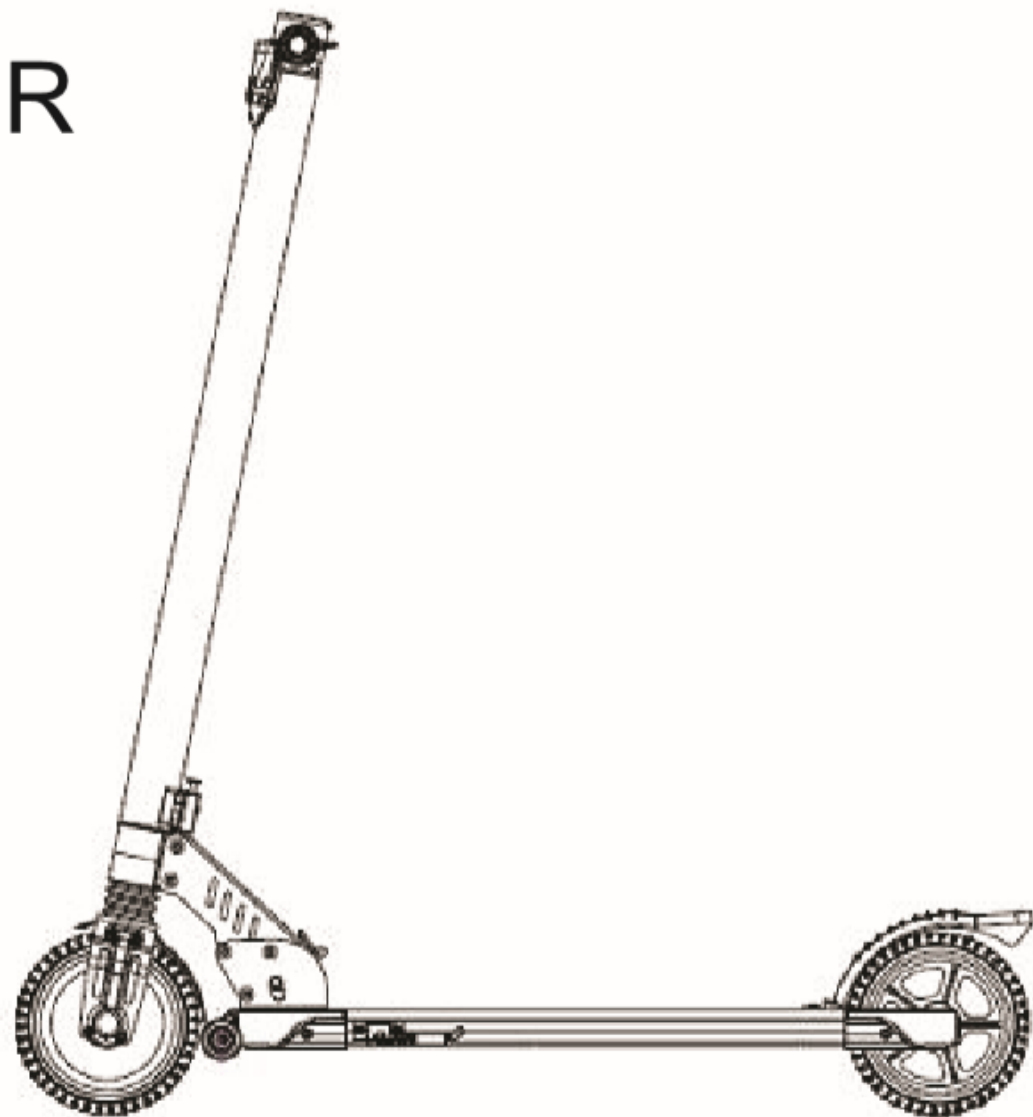


GYROCOPTERS ZOOM 2.0  
ELECTRIC SCOOTER  
FOR KIDS  
USER MANUAL



# Contents

<b>Section 1: General Information</b> .....	<b>01</b>
1.1 What's in the box. ....	01
1.2 Safety warnings and important information .....	01
1.3 Disposal at end of life .....	02
<b>Section 2: Features</b> .....	<b>03</b>
2.1 Assembly .....	03
2.2 Scooter diagram .....	04
2.3 Display overview .....	05
2.4 Display indicators .....	05
2.5 Charging .....	08
<b>Section 3: Usage</b> .....	<b>10</b>
<b>Section 4: Maintenance</b> .....	<b>14</b>
4.1 Cleaning .....	14
4.2 Storage .....	14
<b>Section 5: Specifications</b> .....	<b>15</b>
<b>Section 6: Safety Instructions</b> .....	<b>16</b>
<b>Section 7: Battery Maintenance</b> .....	<b>18</b>
<b>Section 8: Warranty Details</b> .....	<b>19</b>

## **SECTION 1: GENERAL INFORMATION**

Before operating this electric Scooter, please read all instructions. This User Manual will guide you through the functions, usage, and proper care of your scooter.

If you have any questions or cannot find the information you need in the manual, please contact us at [support@gyrocopters.ca](mailto:support@gyrocopters.ca)

It is important that you follow all safety warnings that appear throughout this manual and exercise good judgment when using your scooter. Consult this manual before you attempt to use your scooter.

### **1.1 WHAT'S IN THE BOX?**

- 1x Scooter
- 2x Handles
- 1x Charger
- 1x User Manual

### **1.2 SAFETY WARNINGS AND IMPORTANT INFORMATION**

This is a personal scooter with electrical power. Please note this technology cannot prevent injury if you do not use the product as indicated in this manual.

By riding this scooter, the user acknowledges and accepts responsibility of all risks associated with the use of the scooter which may include, but are not limited to, muscle injuries, broken bones, lacerations, serious injury, and possible death, which may be sustained while using the scooter .

To better insure your safety, **ALWAYS USE APPROPRIATE PROTECTIVE GEAR**, read and follow all instructions and warnings in the User Manual.

### **1.3 DISPOSAL AT END OF LIFE**

This product must not be disposed of by incineration, landfilling, or mixing with household trash. Improper disposal of the battery contained within this product may result in the battery heating up, rupturing, or igniting which may cause serious injury. The substances contained inside the battery present chemical risks to the environment. Local regulations and laws pertaining to the recycling and disposal of lithium ion batteries and/or products containing them will vary according to country, state, and local governments. You must check laws and regulations corresponding to where you live in order to properly dispose of the battery and/or unit. It is the user's responsibility to dispose of their waste equipment properly with accordance with local regulations and laws.

For additional information about where you should drop off your batteries and electrical or electronic waste, please contact your local or regional waste-management office, your household waste disposal service, or your point-of-sale.

## **SECTION 2: FEATURES**

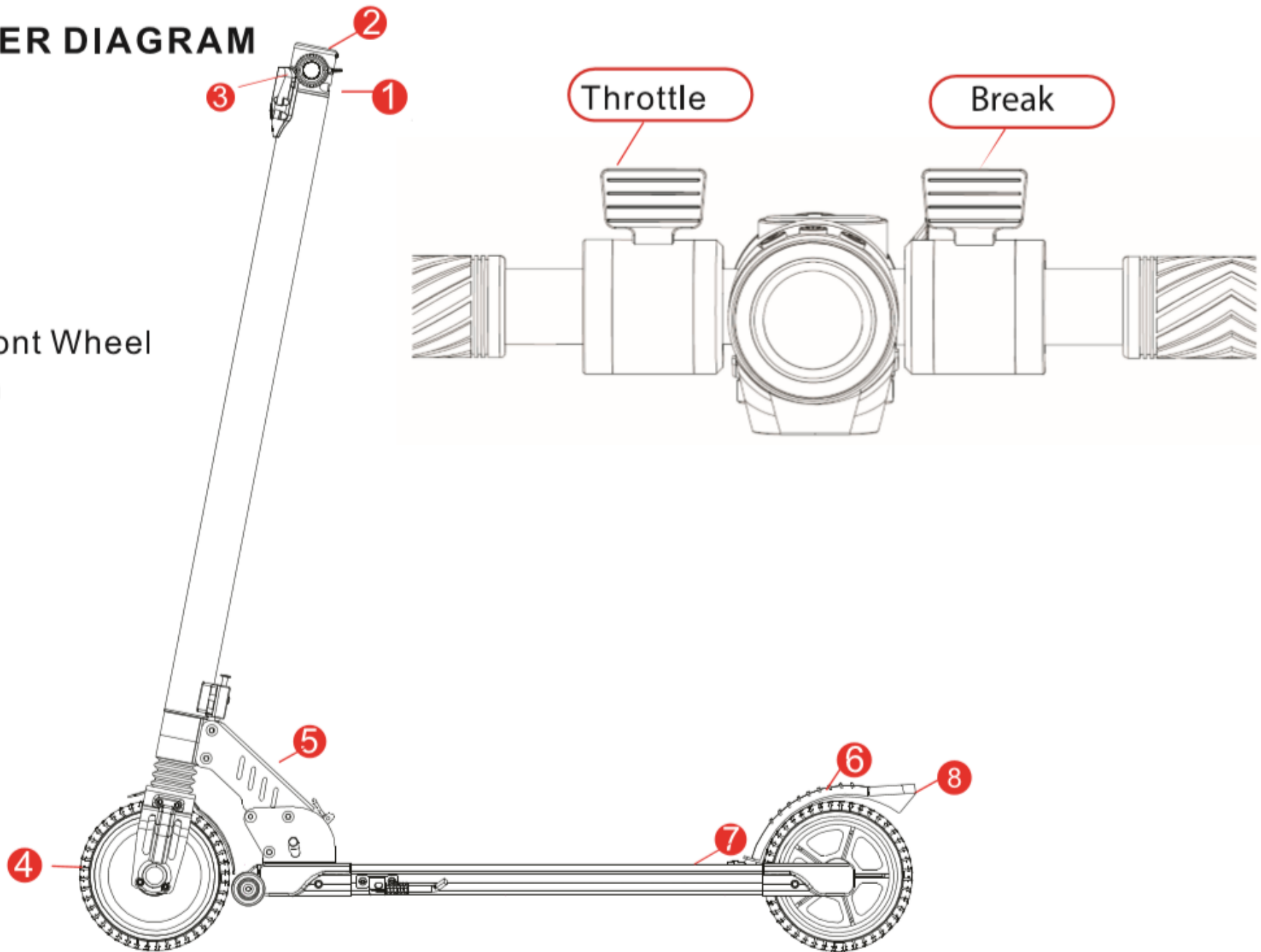
Please read the user manual in its entirety before using the scooter so that you may fully understand its parts and functions and be able to operate it safely.

### **2.1 ASSEMBLY**

Ensure the scooter is off before assembling the unit. The scooter comes mostly assembled within the package. Some minor assembly is required. For initial assembly, required parts and tools are included.

## 2.2 SCOOTER DIAGRAM

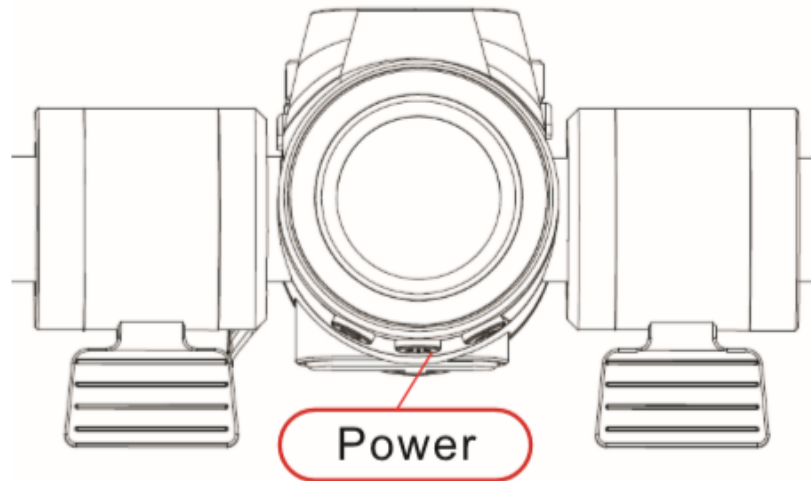
1. Handles
2. Display
3. Headlight
4. Motorized Front Wheel
5. Folding Latch
6. Foot Break
7. Deck
8. Rear Light





## 2.3 DISPLAY OVERVIEW

The scooter's display features many different options and elements. Be sure you understand these before attempting to ride. See the following images and information for details related to each option. Note, these areas are related to features noted in the next section

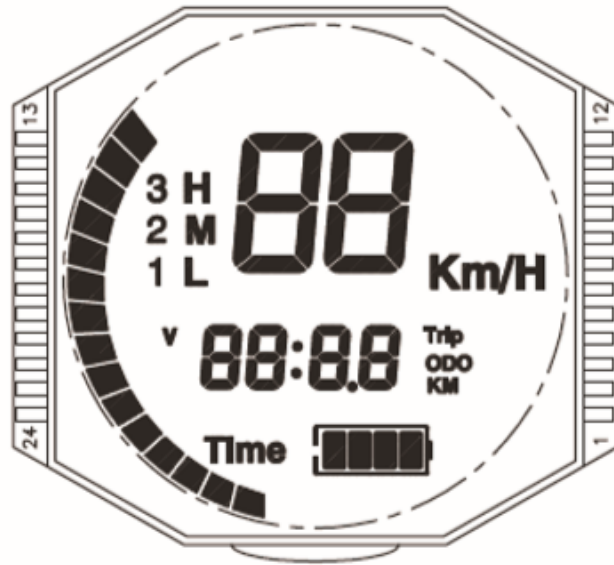


Press and hold the POWER button to turn on the display.

**DO NOT** expose the display to direct sunlight or high heat for extended periods of time.

## 2.4 DISPLAY INDICATORS:

Note, after 3 minutes of non-use, the display will turn itself off which will also prompt the scooter to turn off.



## General Indicators:

**Speed:** These numbers indicate current speed readings and will change as the scooter is in use.

**Kms per Hour (Km/h):** This icon indicates odometer readings and will appear if you have selected speed to display with this form of measurement.

**Battery Level:** This icon indicates battery power level. As power goes down, the icon will indicate different levels.

**Gear Position:** This icon indicates current gear. There are 3 gears. Gear 1 has a speed



limit of 0-8km/h. Gear 2 has a speed limit 1-12km/h. Gear 3 has a speed limit of 1-20km/h. Use the **left ARROW** and **right ARROW** button to adjust gears as desired.

### **Fault Indicators:**

There are four icons which will appear under abnormal circumstances and/or if the internal system or parts inside the scooter encounter some type of issue. Read the information below to understand what each icon relates to. In the event that any of these icons appears, attempt turning the scooter off and back on again.

 **If doing so doesn't resolve the issue, please contact customer service.**

- **Motor Failure:** The icon indicates motor activity and will appear if an element of the motor fails to function properly. If the issue is resolved and/or there are no issues with any element of the motor, the icon will not appear.
- **Control Failure:** This icon indicates a serious internal issue with the scooter's components. If this icon appears, immediately stop using the scooter and contact customer service.
- **Brake Failure:** This icon indicates abnormal brake activity and will appear if an element of the brakes fails to function properly. If the issue is resolved and/or there are no issues with any element of the brakes, the icon will not appear.

### **Display Indicators & Modes**

Different modes and their related settings may be shown on the display as desired. To switch between modes and display different information, briefly press the **POWER** button.

- Distance: This icon is related to tracking the distance you travel per trip. To reset, turn the scooter off
- Odometer: This icon indicates odometer readings. The number that appears will signify the current odometer reading.
- Rotation Speed: This icon indicates RPM readings.
- Time: This icon and corresponding numbers are related to your time per trip. To reset, turn the scooter off.
- Voltage: This icon indicates voltage readings/activity. The number that appears will signify the current voltage level.

## 2.5 CHARGING



### **CHARGE THE SCOOTER BEFORE USING IT.**

The charge cycle is complete when the battery icon on the display is full and/or the charger's light is green. After this initial charge, use the scooter until battery level reaches approximately 10% before recharging.

Each charge cycle from zero to full charge will take approximately 3 hrs. When the backlit display on the handlebars indicates battery power is low, recharge the scooter. To recharge the scooter, use the included charging cable and its adapter.

Step 1. Ensure the scooter is turned off before charging and remains off while charging.

Step 2. Remove the cap covering the charger port.

Step 3. Insert the appropriate end into the scooter's stand and then insert other end into a wall outlet.

Step 4. While the scooter is charging, the charger light will be red.

Step 5. When the scooter is fully recharged, the charger light will turn green. You may then disconnect from the charger.



**DO NOT** under any circumstances use the scooter while it is charging or connected to the charger.



The charging time is approximately 3 hours. Charging longer than that may affect battery life and/or performance. If the charger's light doesn't turn on, it may not be fully connected. Check that it is securely connected to the wall and to the scooter.

## SECTION 3: USAGE

We sincerely hope every operator can ride the scooter safely. Think back to when you first learned to ride a bike, a car or skateboard. Note the following information before attempting to ride your scooter.



- Protective gear including a ASTM F1492-approved helmet must be worn at all times
- The scooter supports up to 65 kg
- Only drive the scooter where permitted. Local laws may restrict where you can ride.



**The scooter contains a motor and may be classified as a motor vehicle under your local law. It is your responsibility to understand and abide by any local laws restricting how or where you may ride.**

### 3.1 GETTING STARTED

Assuming you have equipped suitable protective gear and that the scooter has been placed on a level surface, is well charged, and does not have any issues, follow the steps below. For your safety, please carefully read all of this section before attempting to ride.

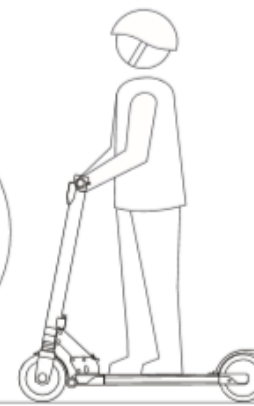
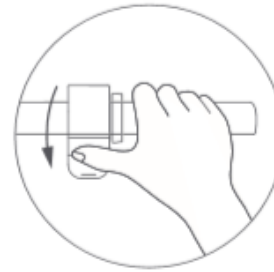
You will need to kick off the ground to begin manually acceleration start before the throttle may be used.

Regardless of start type, Cruise Control may be used any time after you've started using the throttle. See the instructions below.

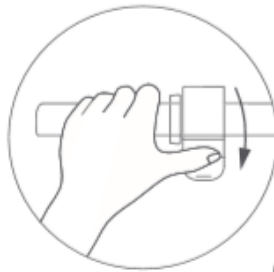
Step 1: Turn on the Scooter, and check the power indicator.



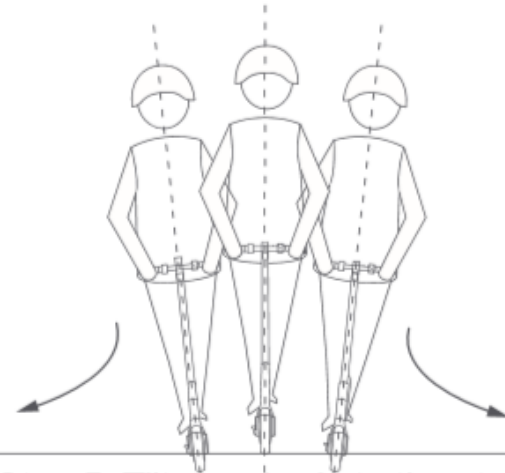
Step 2: Step on the deck with one foot, and slowly kick off the other foot on the ground.



Step 3: When the scooter starts to coast, put both feet on the deck and press the accelerator (Throttle). The accelerator initiates once the coasting speed exceeds 5km/h.



Step 4: Release the accelerator and the kinetic energy recovery system (KERS) initiates automatically to brake slowly; and squeeze the brake lever for a sudden brake.



Step 5: Tilt your body to the steering direction as you turn, and slowly turn the handlebar.



## 3.2 PRACTICING GUIDELINES

Practice until you are comfortable with using all of the scooter's functions. See the following tips below.

- Wear casual clothing and flat shoes to maintain your flexibility and stability.
- Practice until you can easily get on, move forwards, turn, stop, and get off easily.
- Make sure the pavement is even. Do not drive on a slope until you are experienced.
- The scooter is designed for relatively smooth, flat terrain. When driving on uneven terrain, the user should slow down.
- Until you are comfortable using the scooter, avoid driving in places with pedestrians or obstacles.



**The scooter weights approximately 7.1kg. If you are unsure of your ability to lift it with one hand, please lift it with both hands or have someone to help lifting.**



### 3.3 DIAGRAM OF STANDING AND FOLDING

#### Standing

The scooter includes a kickstand. Before using the kickstand, bring the scooter to a complete stop and turn it off.

1. Locate the kickstand on the side of the scooter's deck.
2. Push the kickstand down and away from the scooter. Then carefully lean the scooter on the kickstand.

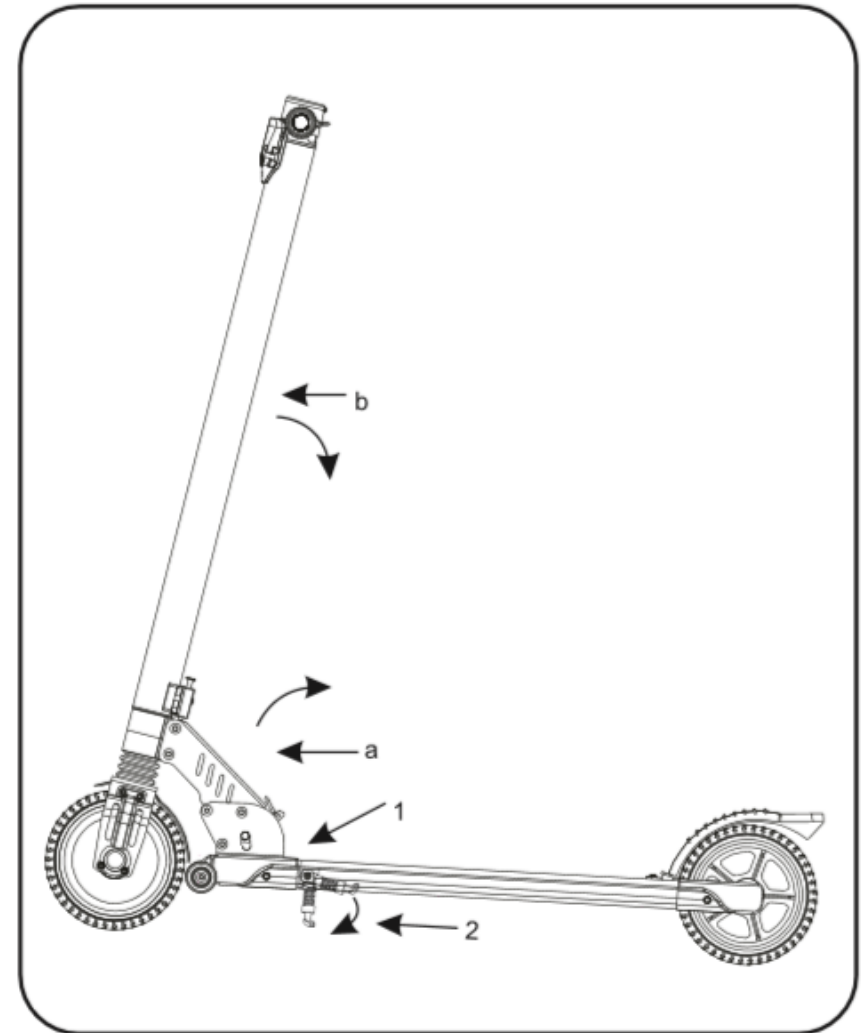
Before riding the scooter again, lean the scooter off the kickstand and push the kickstand up.

#### Folding

- a. Locate the latch at the base of the scooter's stand.
- b. Holding the latch open, grasp the stand firmly and pull it down until it and the deck are parallel.



**Before moving, lifting, or otherwise transporting the scooter, turn it off. Fold the scooter and grasp it firmly before lifting and/or moving it**



## SECTION 4: MAINTENANCE

### 4.1 CLEANING

The scooter may need cleaning after riding for extended periods of time. See the following tips below.

- Completely power off the scooter before cleaning.
- Use dry, non-abrasive cloth to gently remove debris or dust.
- The scooter may not come in contact with it in any kind of liquid.
- Never use alcohol or ammonia-based cleaning solutions
- Never spray liquid directly onto any part of the scooter.

### 4.2 STORAGE

The scooter maybe stored easily when not in use. See the following information below.

- Before storing, fully charge the scooter to prevent battery over-discharge due to non-use.
- Cover the scooter to keep dust out. Do not store in a dusty environment as, with all electronic devices, this may cause damage over time.
- Store the scooter indoors at suitable temperatures between -10°F to 113°F (-23°C to 45°C).
- If storing for more then 1 month, discharge and recharge battery every 2 weeks.
- DO NOT store in an unheated garage, shed, or other location with extreme temperature fluctuations or ranges.



**Do not perform any maintenance when the power is on or the battery is charging. Do not let water or liquids get into the scooter. It will cause permanent damage to the internal electronic components.**

## SECTION 5: SPECIFICATIONS

Performance Indicators	Item	Parameters
Size	Folding Size	(1020x405x245 mm)
	Open Size	(920x405x1010 mm)
Weight	Vehicle Weight	6.5-8.0kg
Riding Requirements	Suitable Heights	4'3" - 6'6" (130 - 200 cm)
	Weight Limit	Up to 65 kg
Main Parameter	Material	Aluminum alloy
	Max Speed (km/h) [2]	16 - 20 km/h
	General range [2]	Approx. 12 km
	Working Temperature	32°F - 104°F (0°C- 40°C)
Battery	Storage Temperature	(-23°C - 45°C)
	Battery	Rechargeable Lithium Ion Battery
	Battery Management System (BMS)	Balance, Over-charge, Under-voltage,
		Overheating automatic cutout

[2] - General range is measured when there is no wind, the scooter is fully charged to ride at even speed of 15 km/h on a flat surface with a load of approx. 60 kg. Speed varies based on the weight and height of the rider as well as riding conditions.

Note: Data and specifications may vary due to different models, and are subject to change without notice.

## SECTION 5: SPECIFICATIONS

Performance Indicators	Item	Parameters
Motor	Power	50 - 250 W
Charger	Rated Power	58.8 W
	Rated Input Voltage	100 - 240 VAC 50/60Hz 2A
	Rated Output Voltage	29.4 V
	Rated Current	1.5-2 A
	Charging Time	Approx 3 hrs

## SECTION 6: SAFETY INSTRUCTIONS

1. Do not ride in the rain.
2. Keep your speed between 5 - 10 km/h when you ride through speed bumps, elevator sills, uneven surfaces. Slightly bend your knee to better adjust mentioned surfaces.
3. Look out for doors, elevators and other overhead obstacles.
4. Do not accelerate when you go downhill.
5. Do not press the accelerator when you are walking alongside the scooter.
6. Do not hang bags or heavy stuff on the handlebar.
7. Keep both feet on the deck at all times.
8. Do not turn the handlebar violently during high speed riding.

9. Do not ride in water where water level is higher than 0.78 inches.
10. Do not keep hands away from handlebar.
11. Do not try riding up or down stairs, and jumping over obstacles.

## **IMPORTANT REMINDERS!**

- ▲ This electric scooter is a leisure device. But once they are in public area, they will be seen as vehicles, subjecting to any risks faced by vehicles. For your safety, please follow instructions in the manual and traffic laws and regulations set forth by government and regulatory agencies.
- ▲ Please note that faster the scooter is, the longer it takes to stop. On a smooth surface, the scooter may slip, lose balance and even result in fall. Thus it is crucial that you use caution, keep proper speed and distance, especially so when you are unfamiliar with the place.
- ▲ Closely follow instructions in the manual. Gyrocopters shall not be liable for any financial losses, physical injuries, accidents, legal disputes and other interest conflicts resulted from actions that violate user instructions.
- ▲ Check the scooter before every use. When you note loose parts, low battery alerts, flat tires, excessive wear, strange sounds, malfunctions and other abnormal conditions, stop riding immediately and call for professional support.
- ▲ Warning - Risk of Fire - No User Servicable Parts.



## SECTION 7: BATTERY MAINTENANCE

1. Use original battery packs, use of other models or brand may bring about safety issues.
2. Do not touch the contacts. Do not dismantle or puncture the casing. Keep the contacts away from metal objects to prevent short circuit which may result in battery damage.
3. Use original power adapter to avoid potential damage or fire.
4. Mishandling of used batteries may do tremendous damage to the environment. To protect nature, please follow regulations to properly dispose used batteries.
5. After every use, fully charge the battery to prolong its lifespan.

### IMPORTANT REMINDERS!

- ▲ Do not place scooter in an environment where the ambient temperature is higher than 122 F or lower than -4 F (e.g. do not leave the scooter in a car under direct sunlight for an extended period of time).
- ▲ If the scooter is expected to be left idle for more than 15 days, please carefully charge the battery and place it in a dry and cool place. Keep in mind to recharge it every 15 days to protect the battery from potential damage which is beyond limited warranty.
- ▲ Always charge before exhausting the battery to prolong the battery's lifespan. The battery pack performs better at normal temperature, and poor when it is below 32 F. For instance, when it is below -4 F, the riding range is only half or less than normal state.
- ▲ The damage caused by prolonged no charge is irreversible and is beyond limited warranty.



## **SECTION 8: WARRANTY DETAILS**

Gyrocopters offers 90 days warranty on all products. 90 days warranty commences on the date of purchase.

Please retain your payment receipt/Order details, as proof of purchase is required to claim warranty. All defective merchandise are eligible for repair within 90 day period from the original purchase date.

This warranty does not cover normal wear and tear, wheel or any physical damage or liquid damage caused by parts or unit by improper usage or improper handling.

Warranty does NOT cover over-charging, or damages due to improperly maintaining the lithium battery installed in the unit. Please refer to Battery maintenance section of this manual for details on taking care of battery of your unit.

Opening and altering the device will void any original warranty. We assume no liability for loss or damages caused by unsafe riding and/or improper usage. This warranty does not cover physical damages resulting from accident, misuse or abuse, lack of reasonable care, the affixing of any attachments, stunts, tricks, loss of parts, over-load or subject in the product to any but the specified voltage. Use of unauthorized replacement parts will void warranty.

Gyrocopters will only accept returns on unused and undamaged products that are returned in the original packaging within 14 days of your purchase date.

**Contact Details:**

**Gyrocopters e-mobility systems**  
**[www.gyrocopters.ca](http://www.gyrocopters.ca)**

**For Sales: [sales@gyrocopters.ca](mailto:sales@gyrocopters.ca)**

**For Support: [support@gyrocopters.ca](mailto:support@gyrocopters.ca)**