



Two  
dots

**WARNING**

Lithium-Ion batteries are an hazardous and potentially flammable material.  
If the hoverboard has suffered any kind of damage, do not charge it but instead contact TwoDots for assistance.

**USER MANUAL**

**01. Introduction**  
Page 01

**02. Main Components**  
Page 02

**03. Safety Alerts**  
Page 03

**04. Preparation**  
Page 05

**05. Power on**  
Page 06

**06. LED indicators**  
Page 07

**07. Mobile App**  
Page 08

**08. Bluetooth® Pairing**  
Page 09

**09. How To Ride**  
Page 10

**10. Safety Alerts**  
Page 14

**11. Battery Alerts**  
Page 15

**12. Maintenance & Warranty**  
Page 16

**13. References And Contacts**  
Page 17

## 01. Introduction



Two  
dots

### Before you begin

Before learning to ride your hoverboard, you must read and follow all instructions and warnings in this user manual. It's important that you follow all safety warnings that appear throughout the user manual and that you use good judgement when you ride your hoverboard. Using a vehicle inevitably involves some risks, and this hoverboard is no exception.

Do you remember when you rode your bike for the very first time? You did it in a safe place, maybe with the help of someone who could assist you. You rode slowly, calmly and wearing proper clothes. So, you have to do exactly the same with your new Glyboard Corse.

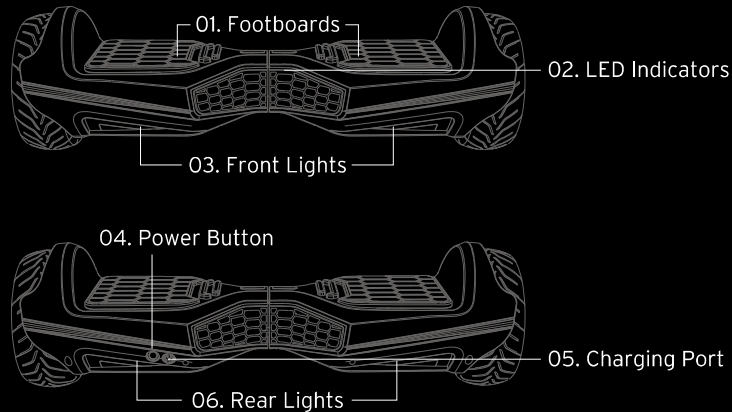
### Risk of injuries

Glyboard Corse is a self-balancing, personal hoverboard that uses gyroscope technology. Gyroscope technology cannot prevent injury if you do not ride the hoverboard safely. Whenever you ride your Glyboard Corse, your risk of serious injuries or death from loss of control, collisions and accidental falls. To reduce the risk of injury you must read and follow carefully all the instructions provided in this user manual.



Two dots

## 02. Main Components



## 03. Safety Alerts



Two dots

- 1) Check the battery before use. Do not continue riding the hoverboard when the battery is running out (see page 07): the hoverboard may suddenly halt and make you fall.
- 2) Check local laws and regulations to see where and how you may use your hoverboard legally and always obey to all applicable laws.
- 3) Wear suitable clothes, in order to be always comfortable and in control. Absolutely avoid heels.
- 4) Do not place anything on the footboards except for your feet.
- 5) Ride away from obstacles and slippery surfaces that may cause you to lose balance and fall.
- 6) Avoid riding on steep slopes and always keep both wheels in contact with the ground.
- 7) Avoid holes, curbs and steps: this vehicle is not meant for jumps or stunts.
- 8) Avoid riding over any surface where the bottom of the hoverboard may impact any object.
- 9) Always leave the right amount of space for the wheels when riding.
- 10) Always ride at a safe speed for you and those around you.
- 11) Always be prepared to brake and always keep a safe distance.
- 12) When approaching a pedestrian, slow down and always give way.
- 13) If you are riding along another hoverboard rider, keep a safety distance between each other and do not ride side by side unless there is enough space.
- 14) Helmet, kneep pads and other protections are not mandatory, but still higly recommended.
- 15) Inspect your hoverboard before using it.
- 16) Do not allow other people to ride your hoverboard without reading this manual.
- 17) Always turn gently and with caution: fast turns may cause falls.
- 18) Never carry a second passenger: this hoverboard is strictly meant for only one rider.

- 19) Do not exceed the weight limit of 75 kg (included backpacks and other possible weights); exceeding the weight limit may cause damage to the vehicle and the rider.
- 20) This hoverboard is not a toy and it is not suitable for children: the pilot should weight at least 15kg and should be over 13 years old. You are the judge of whether your child can safely operate the hoverboard according to his riding ability, strenght and degree of maturity.
- 21) Do not lift the hoverboard off the ground with the engine on and do not turn on the hoverboard in mid-air: the wheels running out of control may endanger the safety of people or property.
- 22) Any changes or modifications may void the warranty and endanger the safety of people or property.
- 23) The hoverboard speeds up when you shift your weight forward. A minimum weight shift is all you need to move: do not excessively lean your body to avoid falls.
- 24) Do not ride in the dark or in areas with poor lighting.
- 25) Do not ride the hoverboard if you are not feeling well or under the influence of alcohol.
- 26) Do not ride if you are pregnant.
- 27) Do not dismount while moving.
- 28) Always be vigilant: avoid distractions and keep your concentration while driving.
- 29) Always keep both feet on the footboards and keep a relaxed posture: knees and elbows should not be too firm.
- 30) Do not ride backwards for too long: instead, turn 180° and move forward.
- 31) Never drive near cars or other moving vehicles.
- 32) Use the hoverboard only for recreational purpose, and exclusively in private pedestrian areas.
- 33) Start practicing using the beginner mode (Strada, see the explanation inside the Glyboard Corse app and see page 08) and do not move to any other mode until you are able to maneuver the hoverboard with familiarity.
- 34) The Strada mode has a speed limit of 6km/h: use it when riding on sidewalks.

## 04. Preparation



### Charging the battery

Insert the power plug in the charging port (located on the back of the vehicle, see page 02) and then connect the wire to the power socket. Fully charge the battery (in a clean and dry place) before using the hoverboard for the first time: the charging process might last more than 3 hours.

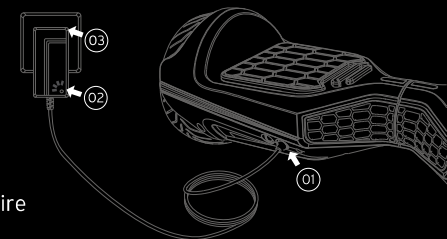


■ When the hoverboard is charging, the light on the charger will be red.

■ When the battery is fully charged, the light on the charger will be green.

#### CAUTION:

Do not insert the power plug in the charging port, if the wire or the AC Power is wet after usage.



### Battery charge level

Check the battery level by looking at the LED indicators (see page 08), and make sure you have enough power to complete your trip. If possible, always charge the battery after every use.



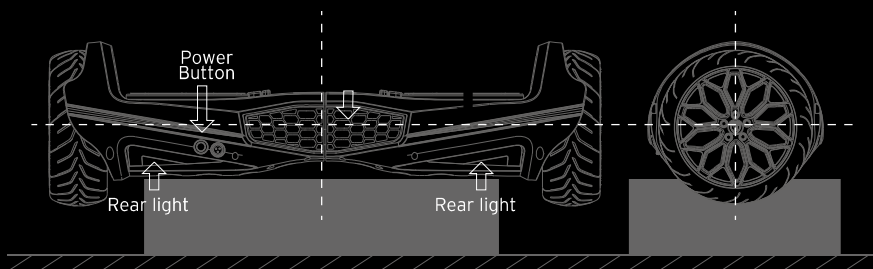
Two dots

## 05. Power On

Power on the hoverboard by pressing the Power Button (located on the back of the vehicle, see page 02): once pressed, the LED Indicators will turn on to indicate that the power is on.

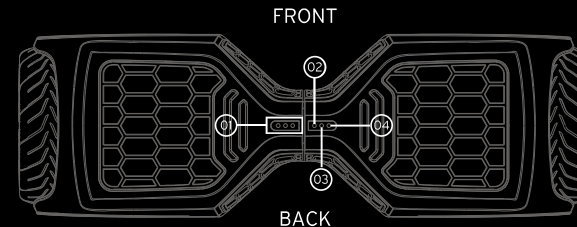
### Reset Procedure

- 1) Place the hoverboard on a plane surface with both the wheels raised from the ground
- 2) Press the Power Button for 3-5" until the rear lights flash
- 3) Turn off the hoverboard and then turn it on again



## 06. LED indicators

The lights on top of the hoverboard are used as indicators:



### 01 Battery Level

- Three green lights mean 71-100% power
- Two green lights mean 41-70% power
- One green light means 11-40% power
- No light means 10% or less power

### 02 Power - turns on once the hoverboard is in function

### 03 Balance - turns on once the balancing system is active

### 04 Warning (red light) - turns on in case of problems (balancing issues, low battery, excessive speed)



Two  
dots

## 07. Mobile App



**GLYBOARD  
CORSE**



The hoverboard is equipped with multimedial functions, with a smartphone app called **“GLYBOARD CORSE”** that is available both on App Store and Google Play.

The app has several functions (some of which might not be immediately available but might be coming through future updates):

- On board computer, with speed, battery level, 3 driving modes, distance and route tracking
- Lights control and authentic Lamborghini sounds
- List of hoverboard-free Italian areas
- Online leaderboards for predetermined challenges
- List of upcoming TwoDots events and activities

Download the app to stay updated on the latest TwoDots news and to get more info on the app itself.



Two  
dots

## 08. Bluetooth® Pairing

It is possible to pair the hoverboard with a Bluetooth® device, in order to stream your favorite music from the speaker placed on the bottom of the vehicle.

To do so:

- 1) Make sure that both the Bluetooth® function on your device and the hoverboard are turned on.
- 2) Open the Glyboard Corse app on your device to connect wirelessly to your hoverboard.
- 3) On your device, open the Bluetooth® menu and select “GlyboardCorse\_M” from the list.

### *Resetting the Bluetooth® technology*

To reset the Bluetooth® memory you need to reset the hoverboard, as explained in the “Reset Procedure” paragraph on page 06.



Two  
dots

## 09. How To Ride

### CAUTION:

Before riding, make sure your hoverboard is fully assembled and charged. Do not use it if any part is loose or damaged. The hoverboard is highly maneuverable and allows you to easily navigate around obstacles. However, to prevent the loss of traction, be careful when riding and learn to identify and avoid unsafe surfaces. Familiarize with the LED indicators shown on page 07, and wear appropriate clothing and shoes with rubber soles. Ride in an open environment free of obstacles, with a flat and regular surface. Helmet, knee pads and other protective equipments are not obligatory, but still strongly recommended for your sense of security and for protection against injuries.

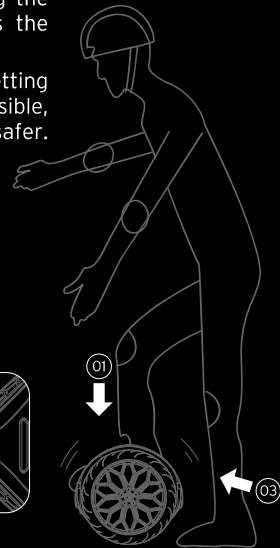
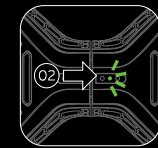
### Step 1: turning on the hoverboard

Place the hoverboard on the ground and push the power button to turn it on.

### Step 2: getting on

- 1) Place your dominant foot on the footboard.
- 2) The Balance LED indicator (see page 07) will turn on, activating the self-balancing system (don't worry if one wheel moves, it means the self-balancing system is working correctly).
- 3) Quickly place the other foot on the other footboard. With practice getting on and off the hoverboard will become a natural gesture, but if possible, during your first trials, try to be assisted by someone in order to feel safer.

Once on the board, learn to stay still. Find the balance point and try to keep the hoverboard in place for at least 30": it is important to understand how to balance and how the vehicle reacts to the movements of your body.



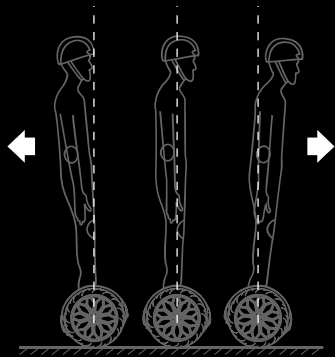
### Step 3: moving forwards and backwards

1) Don't be firm on your knees and keep a relaxed posture: use your ankles rather than your knees to lean your body.

2) To move forwards, SLIGHTLY lean your body forwards. To move backwards and to brake, SLIGHTLY lean your body backwards.

#### NOTE:

when the hoverboard cannot achieve a stable position, an alarm will sound and trigger the Warning LED indicator (see page 07). The hoverboard will automatically return to the original balanced position: during this process, do not ride the vehicle.



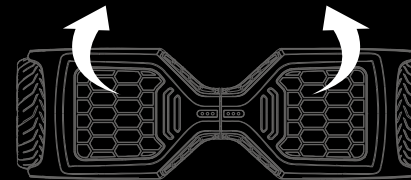
Body leaning should be done in small increments: only small leaning angles are needed to operate the hoverboard.

Overbalancing backwards or forwards may affect your safety during the ride.

### Step 4: turning left or right

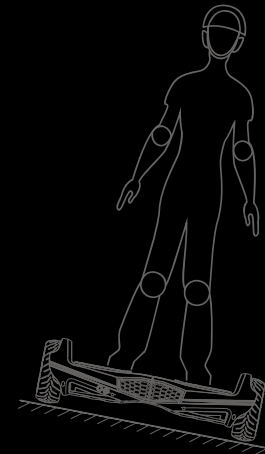
Slightly press your left foot forward to turn right

Slightly press the right foot forward to turn left



To rotate clockwise, slightly tilt your left foot forward and your right foot backward.

To rotate counter-clockwise, slightly tilt your right foot forward and your left foot backward.



#### CAUTION:

- Do not turn suddenly while riding at high speed.
- The hoverboard balances itself front to back, not side to side: avoid riding on steep slopes.



## Step 5: getting off

When the hoverboard is completely still, step back and place first your non-dominant foot on the ground and then the other one. Like when you get on for the first time, getting off could be a bit awkward: do it with support from someone and get off without leaving too much time between the movement of the two feet.



Two  
dots

## 10. Safety Alerts

If the vehicle detects a failure or if the batteries are near exhaustion, the engine will slow down, the Warning LED indicator will turn on and you will hear a beeping sound.

Some causes that can trigger the Warning LED indicator are:

- Irregular tilt angle of the footboard
- low battery voltage
- problems with the platform while driving (system shutdown)
- maximum speed reached
- Platform angle is greater than 35° (system shutdown)
- Stuck wheels
- Electric discharge

### CAUTION:

Do not ride the hoverboard until the condition that caused the alert has been identified and fixed.

## 11. Battery Alerts



Two  
dots

- 1) Batteries are sensitive to low temperatures and a reduction of performance during winter is to be considered perfectly natural.
- 2) Even if you are not using the hoverboard, please charge the battery at least once every 3-4 weeks in order to preserve its life: leaving a battery discharged for months will have a major impact on its performance, potentially damaging it.
- 3) Do not use a battery if the battery pack is broken or if the battery emits an unusual odor, smoke, excessive heat or if it leaks any substance. Avoid contact with any substance leaking from it.
- 4) Keep the battery away from children and pets: exposure to battery voltage could result in death or serious injuries.
- 5) Do not leave the battery unattended during the charging process and do not leave it under charge for extended periods of time.
- 6) The battery contains toxic substances: do not try to open it, for any reason, and do not try to insert any object into the battery or its casing.
- 7) Read and follow the safety instructions printed on the battery label.
- 8) Always use the original power supply and never try to bypass the protectors.
- 9) Do not wash the hoverboard with a power washer or a high pressure hose, and be careful not to soak the power port. Always recharge the vehicle when it's fully dried.
- 10) Never put the battery (nor the hoverboard) under water.
- 11) Never charge the battery near flammable material.
- 12) If you use the battery under conditions different from those specified here, you may invalidate the warranty and damage the battery itself.

**NOTE:**

Lithium-ion batteries are considered hazardous materials. Carrying similar batteries by plane may be prohibited by the law: please contact competent authorities or airlines with which you intend to travel for more details on this topic.



Two  
dots

## 12. Maintenance And Warranty

### Maintenance

Store your hoverboard in a dry place. Even when not in use, charge the battery every 3-4 weeks.

### Warranty

Keep your receipt as proof of purchase and warranty. The warranty covers one year on the hoverboard (excluding battery and tyres) and 6 months on battery and tyres.

**NOTICE:**

The warranty does **NOT** apply to:

- 1) Damage caused by improper use
- 2) Damage caused by alteration, dismantling or fixing by unauthorized third parties
- 3) Damage caused by inappropriate storage
- 4) Lack of receipt or non-complaint receipt
- 5) Damage caused by use on inappropriate surfaces
- 6) Damage caused by use while raining or immersion under water

## 13. References And Contacts



Two  
dots

© 2018 TwoDots

TwoDots is a registered trademark of X-Joy Srl.

Produced and imported by X-Joy Srl

Via Sempione 17 - 21011 Casorate Sempione (VA) - Italy

Customer service: [support@lamborad.com](mailto:support@lamborad.com)

[Lamborad.com](http://Lamborad.com)



Like us!

[Lamborghiniboards](#)

The trademarks, copyrights and design rights in and associated with Automobili Lamborghini, Automobili Lamborghini with Bull and Shield Device are used under license from Automobili Lamborghini S.p.A., Italy

This product complies with the requirements and the dispositions of the following European Directives:

2014/35/EU

2014/30/EU

2011/65/EU