

## Product information

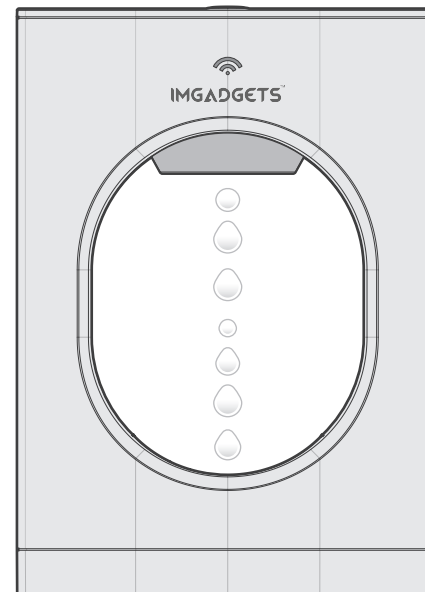
Product name	Water Drop Humidifier
Model	H3
Size	132(L)*132(W)*243mm(H) mm
Color	white
Material	ABS+Silicone
Spray volume	100-150ml/h
Water capacitor	1000ml
working time	8 hours
Rated power	≤10W
Power supply	5V,2A

## Cautions

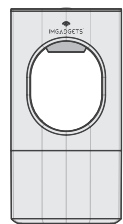
1. Don't exceed the water max line as load the water into the water tank.
2. Don't place upper shell horizontally or upside down, it should be place on the desktop vertically as open the water tank.



# Water Drop Humidifier User Guider



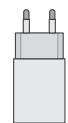
## Package Contents



Humidifier



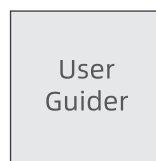
Remote control



Power head



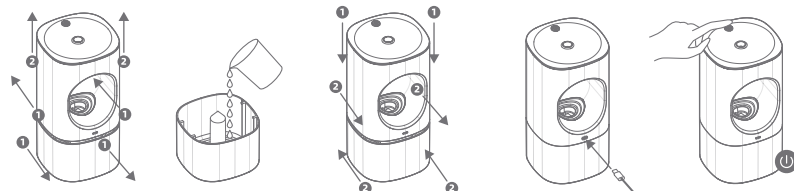
USB cable



User Guider

\*Remarks: Power head is an optional accessory.

## Using steps



1. push the upper part shell in the arrow direction, open the water tank.
2. Pouring l water into the water tank.
3. Install the upper shell following the direction of the arrow.
4. Connect the Type-C power cord to the Type C input as power supply.
5. press the button for start-up.
6. Press the button for over 5 seconds to off the Humidifier.

## Button Working status



1. Shortly press the button 1st time: start-up the Humidifier.



2. Shortly press the button 2nd time: change the water drop status.
3. Shortly press the button 3rd time: off the water drop.
4. Press the button 3 seconds for 1st time: go to sleeping mode.



5. Press the button 3 seconds for 2nd time: go to working mode
6. Press the button for 5 seconds: off the humidifierv.

## Remote controller operation



⏻	Power button	Power on/off
⦿	Water drop button	Press 1st time: the water drop with static status Press 2nd time: the water flow status Press 3rd time:the water drop with up-flow status
🌫️	Foggy button	Press 1st time: repeately 3 seconds foggy on and 3seconds foggy off. Press 2nd time: foggy on continuously
🌙	Sleep mode button	Press 1st time: go to sleep mode, off water drop and foggy, only light is on. Press 2nd time: off the sleep mode, go to normal humidifying working status.
☀️	Light brightness button	After go to sleep mode, press this button to adjust the LED brightness, there are 3 levels: 1. High 2. Middle 3. low