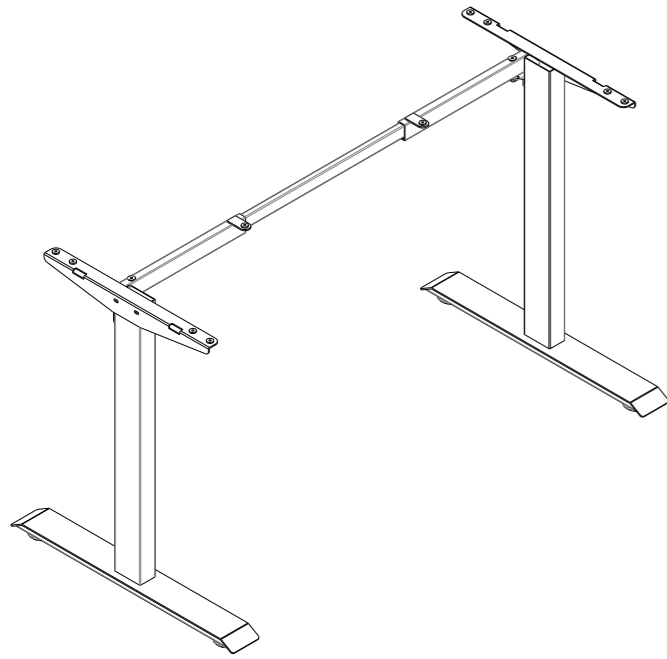


Installation guide: Fixed - Height Side Table

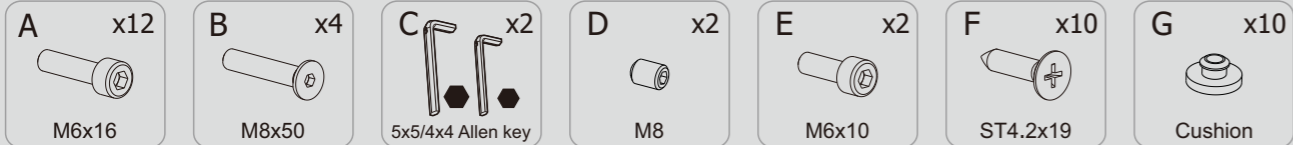


Technical data

Product Model	16724 (Black) 16725 (Grey)
Max. Load Capacity	150 lb
Height	29"
Tabletop Dimensions	Width 48" - 60"
	Depth 24"

Accessory list

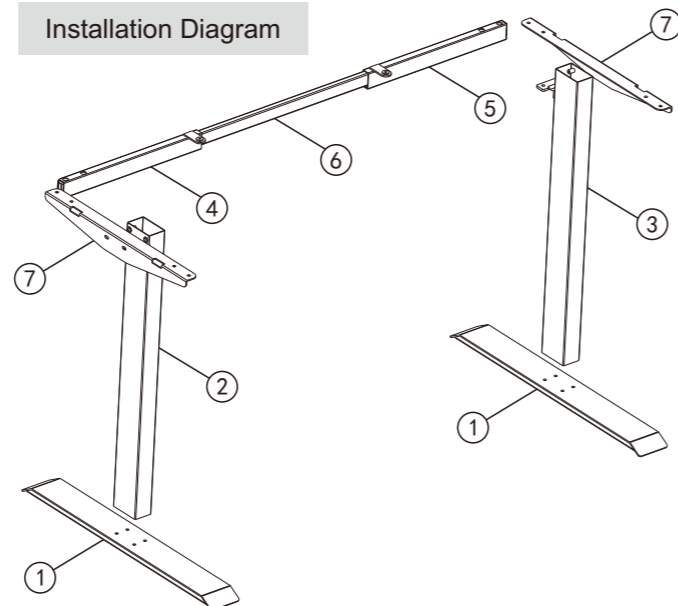
Attention: The drawings below are for guidance only and they may differ slightly from the product and fittings received. Please contact our customer service department if there are any missing tools or installation problems. mojodesk.com/help



Component List

No.	Part	Qty	No.	Part	Qty
①	Feet	2	②	Left column	1
③	Right column	1	④	Left beam	1
⑤	Right beam	1	⑥	Intermediate tube	1
⑦	Supporting plate	2			

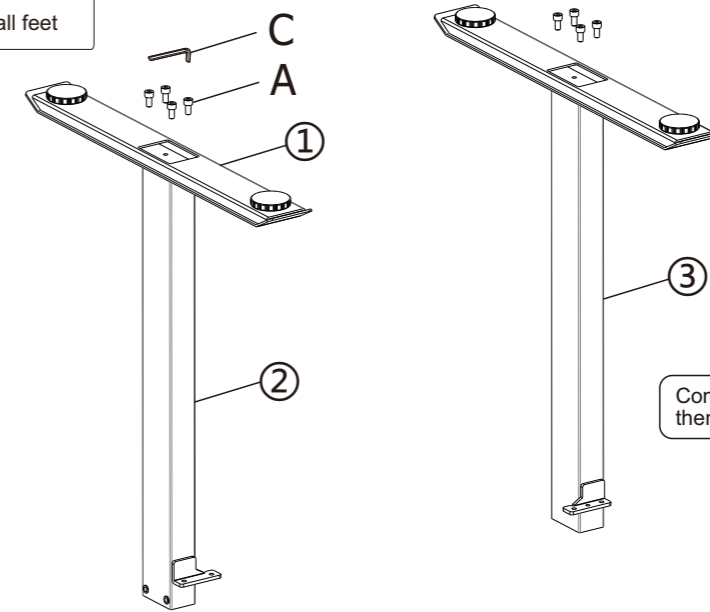
Installation Diagram



STEP 1

Install feet

- A x8 M6x16
- C x1 5x5

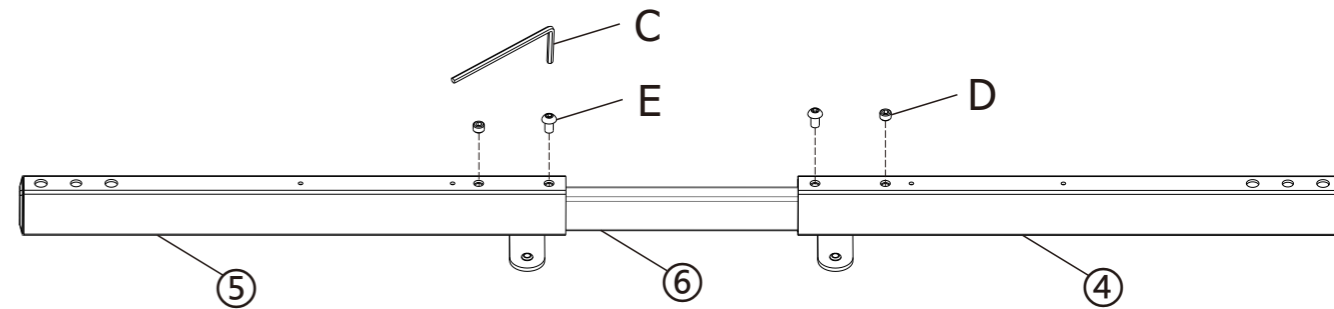


Connect foot (1) to feet(2&3) and then lock them by using screw A and 5*5 Allen key C.

STEP 2

Install beam assembly

- C x1 4x4
- D x2 M8
- E x2 M6x10

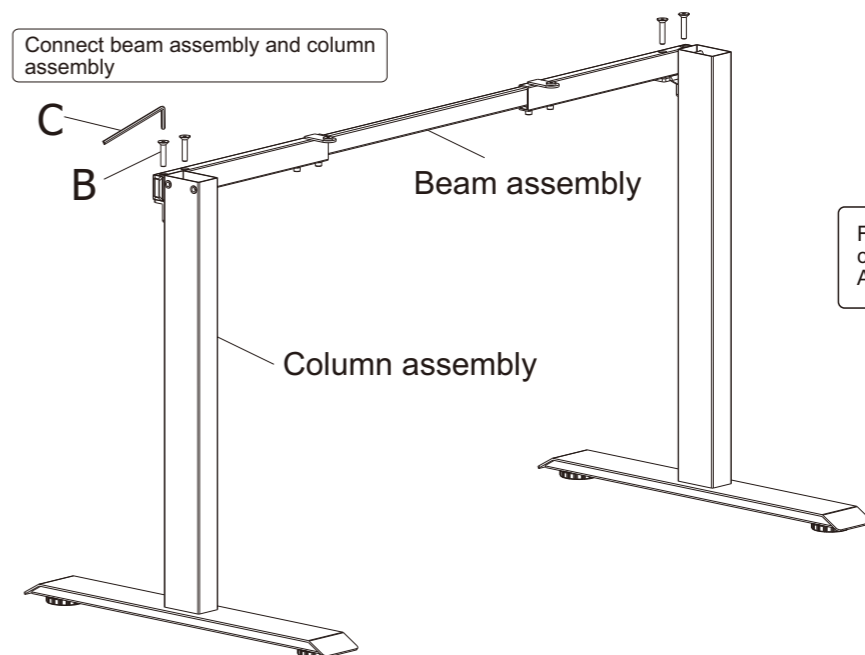


Insert intermediate tube into left and right columns(4&5) to a proper position. Then use 4*4 Allen key to tighten C screw D and E.

STEP 3

Connect beam assembly and column assembly

- B x4 M8x50
- C x1 5x5



Fix the beam assembly on column (2) & (3) and use 5*5 Allen key C to screw screw B

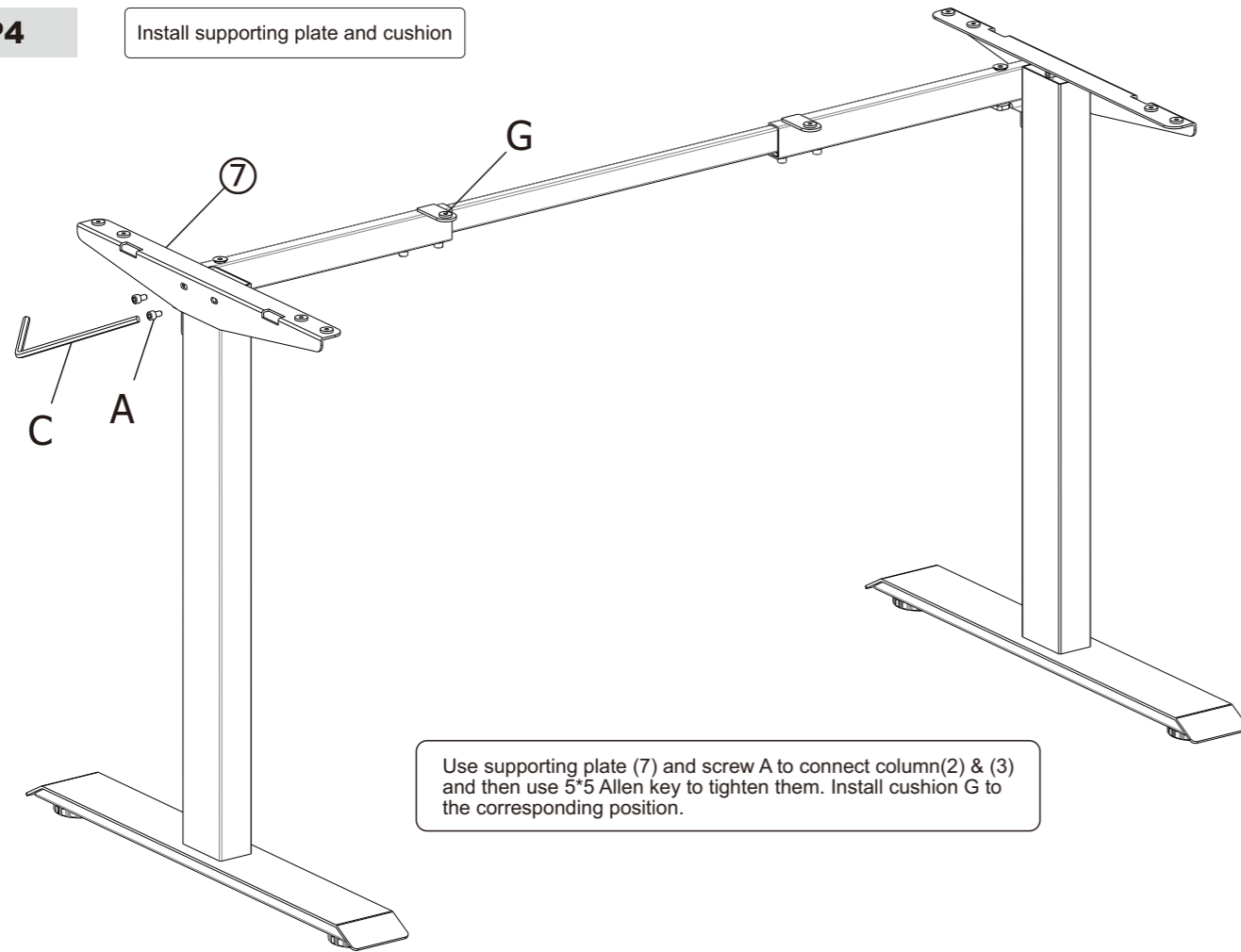
STEP4

Install supporting plate and cushion

A x4
M6x16

C x1
5x5

G x10
Cushion



Use supporting plate (7) and screw A to connect column(2) & (3) and then use 5*5 Allen key to tighten them. Install cushion G to the corresponding position.



Warning

There's spare parts in the package, which will lead to asphyxia if swallowed by accident. Please keep out of the reach of children for the spare parts.

- Make sure you have read and comprehend the manual for installation. Please contact the specialized persons if there's any confusion in the steps.
- Children are forbidden to play on the product because of unforeseen action when playing, so any dangerous consequences caused by this improper action will not be on
- This appliance can be used by children aged from 7 years and above and persons with reduced physical, sensory or mental capabilities or lack of experience and knowledge if they have been given supervision or instruction concerning use of the appliance in a safe way and understand the hazards involved. Children shall not play with the appliance.
- Children must not perform cleaning and user maintenance without supervision.
- Please make sure there is no hazard sources in your operating environment. e.g., do not litter the tools around. Always be careful to treat the packaging materials in order to avoid any possible danger, e.g. plastic bag may lead to choking hazard to children.
- Keep the original package of the equipment if necessary in case of the future use in transportation.

Waste disposal



This marking indicates that this product should not be disposed with other household wastes. To prevent possible harm to the environment or human health from uncontrolled waste disposal, recycle it responsibly to promote the sustainable reuse of material resources. To return your used device, please use the return and collection systems or contact the retailer where the product was purchased. They can take this product for environmental safe recycling.

Need Help?

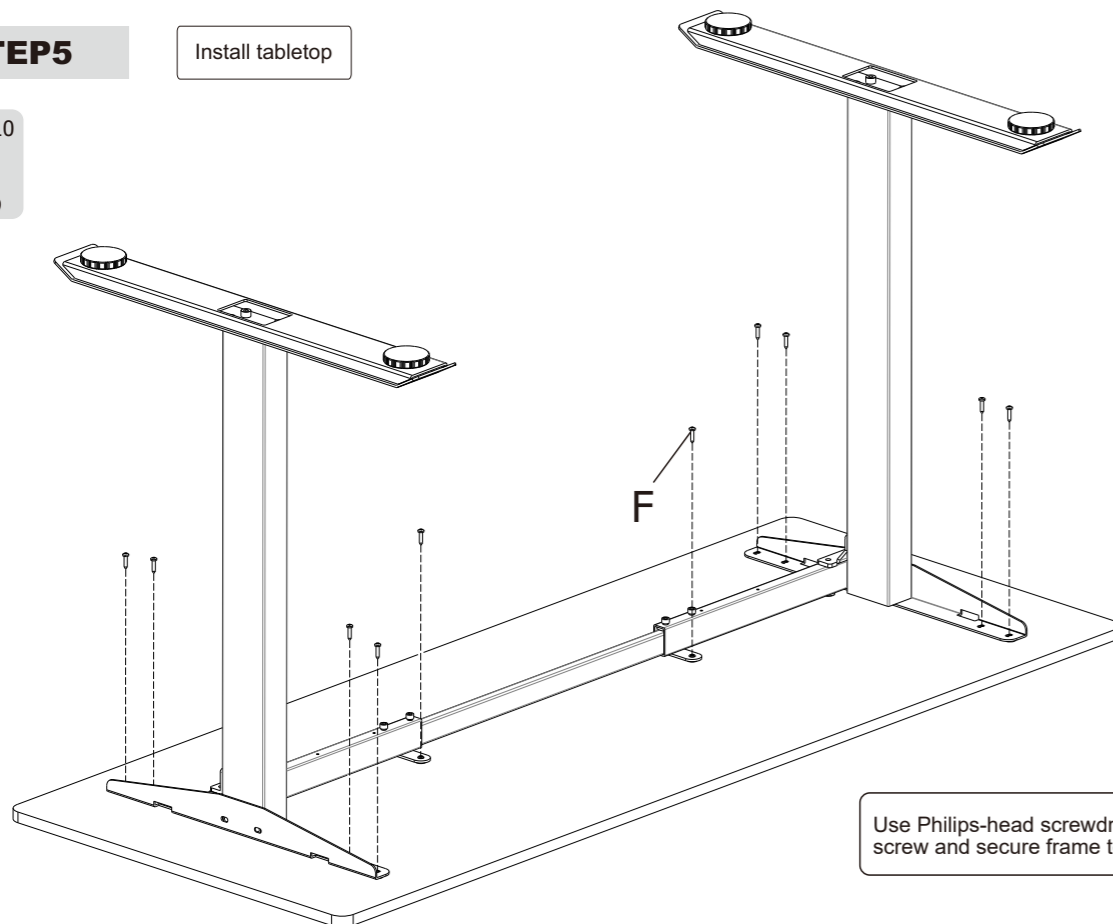
Go to
mojodesk.com/help or
call 800.297.6656



STEP5

Install tabletop

F x10
ST4.2x19



Use Philips-head screwdriver to connect F screw and secure frame to tabletop.