



**Roca**

**Casablanca**

# Casablanca

Interiors that look to the past to reinvent the present by using classic geometric shapes and patterns. Casablanca pays tribute to encaustic tiles while adding a modern twist.



Casablanca Gray 8"x9" Hexagon

Gres Stoneware

8"x8" 8"x9"



Casablanca Fond 8"x8"



Casablanca Trails 8"x8"

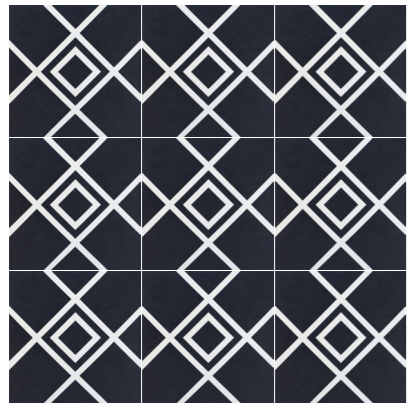


Casablanca Terrazzo Fun White 8"x8"

# Casablanca

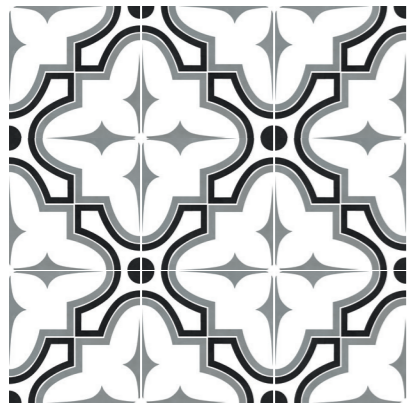
Gres Stoneware

8.2 |  | 8"x8"  
20x20 cm



## Squares

8"x8"  
CAHYD016-88



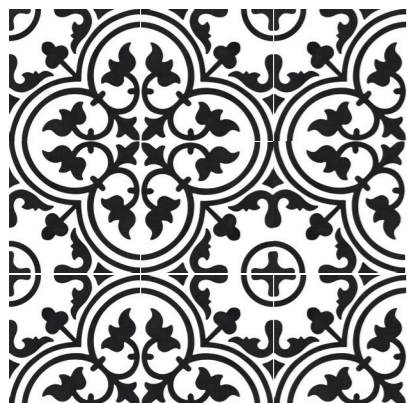
## Market

8"x8"  
CAHYD008-88



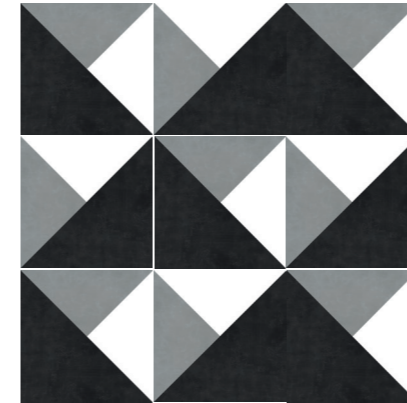
## Trails

8"x8"  
CAHYD017-88



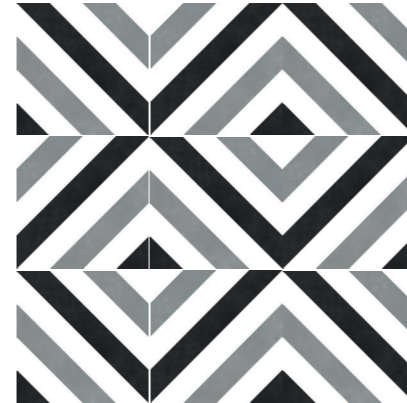
## Heritage

8"x8"  
CAHYD007-88



## Breeze

8"x8"  
CAHYD010-88



## Spice

8"x8"  
CAHYD009-88



Casablanca Breeze 8"x8"

# Casablanca

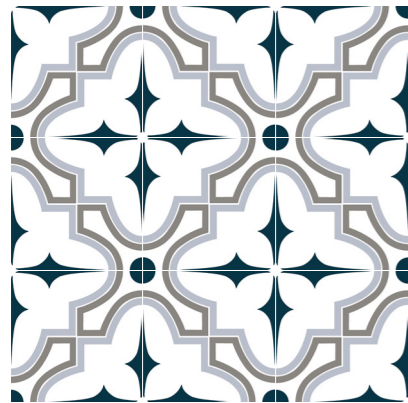
Gres Stoneware

82 | 8"x8"  
20x20cm



Herritage Blue

8"x8"  
CAHYD018-88



Market Blue

8"x8"  
CAHYD019-88

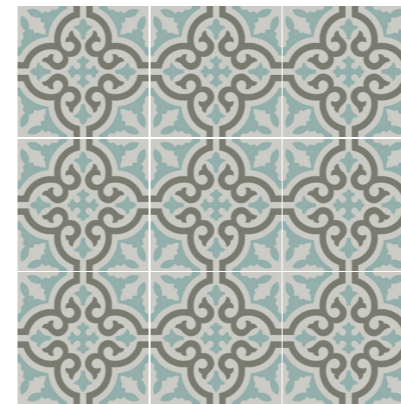


Casablanca Market Blue 8"x8"

# Casablanca

Gres Stoneware

82 | 8"x8"  
20x20cm



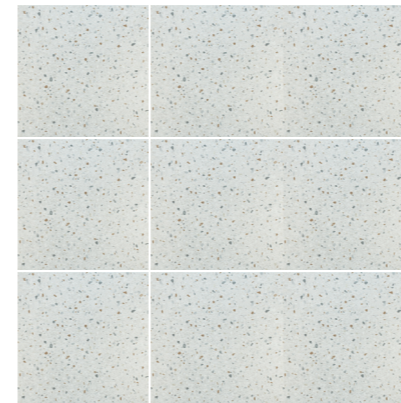
Aqua

8"x8"  
CAHYD005-88



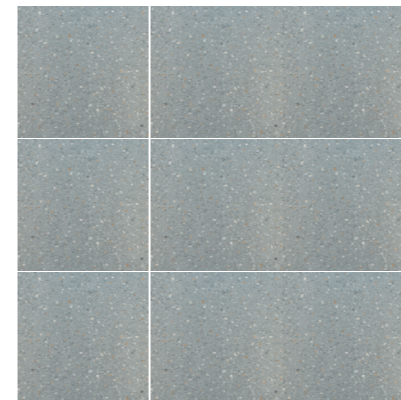
Fond

8"x8"  
CAHYD006-88



Terrazzo Fun White

8"x8"  
CAHYD015-88

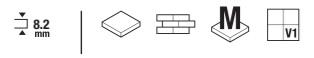


Terrazzo Fun Warm Gray

8"x8"  
CAHYD014-88

# Casablanca

Gres Stoneware



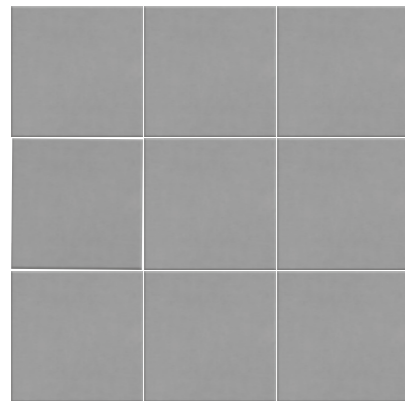
**8"x8"**  
20x20cm



**Solid White**

---

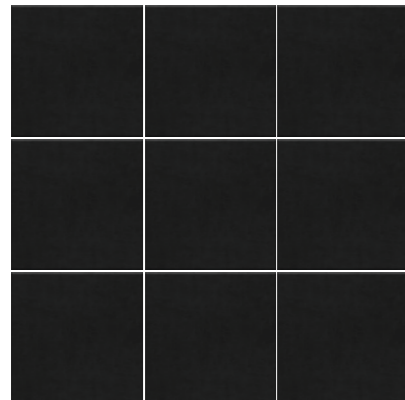
□  
**8"x8"**  
CAHYD011-88



**Solid Gray**

---

□  
**8"x8"**  
CAHYD012-88



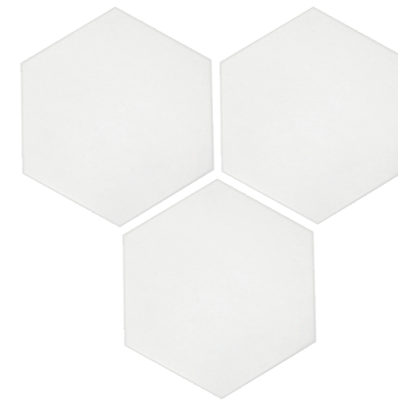
**Solid Black**

---

□  
**8"x8"**  
CAHYD013-88



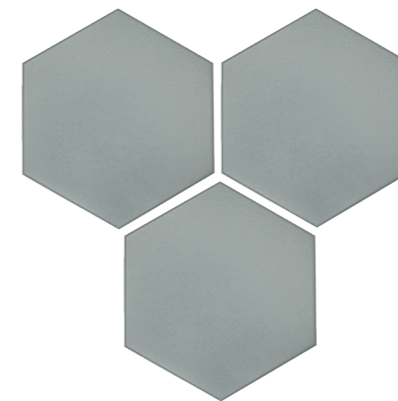
**8"x9"**  
20x23cm



**Solid White**

---

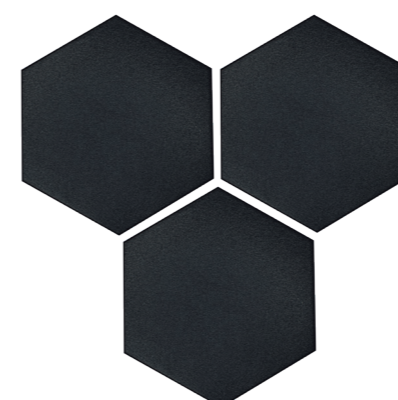
⬡  
**8"x9"**  
CAHYD011-89H



**Solid Gray**

---

⬡  
**8"x9"**  
CAHYD012-89H



**Solid Black**

---

⬡  
**8"x9"**  
CAHYD013-89H

# Casablanca

Gres Stoneware

## Technical Specifications

CHARACTERISTICS	STANDARD	DECLARED ASTM
Water Absorption	C373	<3%
Break Strength	C648	Min. 350
Scratch Hardness	MOH's Scale	5
Chemical Resistance	C650	Unaffected
Frost Resistance	C1026	Resistant
Group	See FAQ's	3
Deep Abrasion - Unglazed Tiles	C1243	Pass
PEI - Glazed Tiles	C1027	2-4*
Minimum Bond Strength (PSI)	C482	165
Dynamic Coefficient of Friction (DCOF)	A137.1	>=0.42
Shade and Texture Rating	CTDA "V"	V1
Facial Dimensions	C499	Pass
Range of Thickness	C499	Pass
Warpage	C485	Pass
Wedging	C502	Pass

\*PEI is 2 for Casablanca Solid Black, Spice, Squares and Trails

\*PEI is 4 for Casablanca Aqua, Heritage, Market, Breeze, Solid White, Solid Gray and Terrazzos

## Packaging Info

Size	SF per carton	PC per carton
8"x8"	12.7	30
8"x9"	10.36	28