

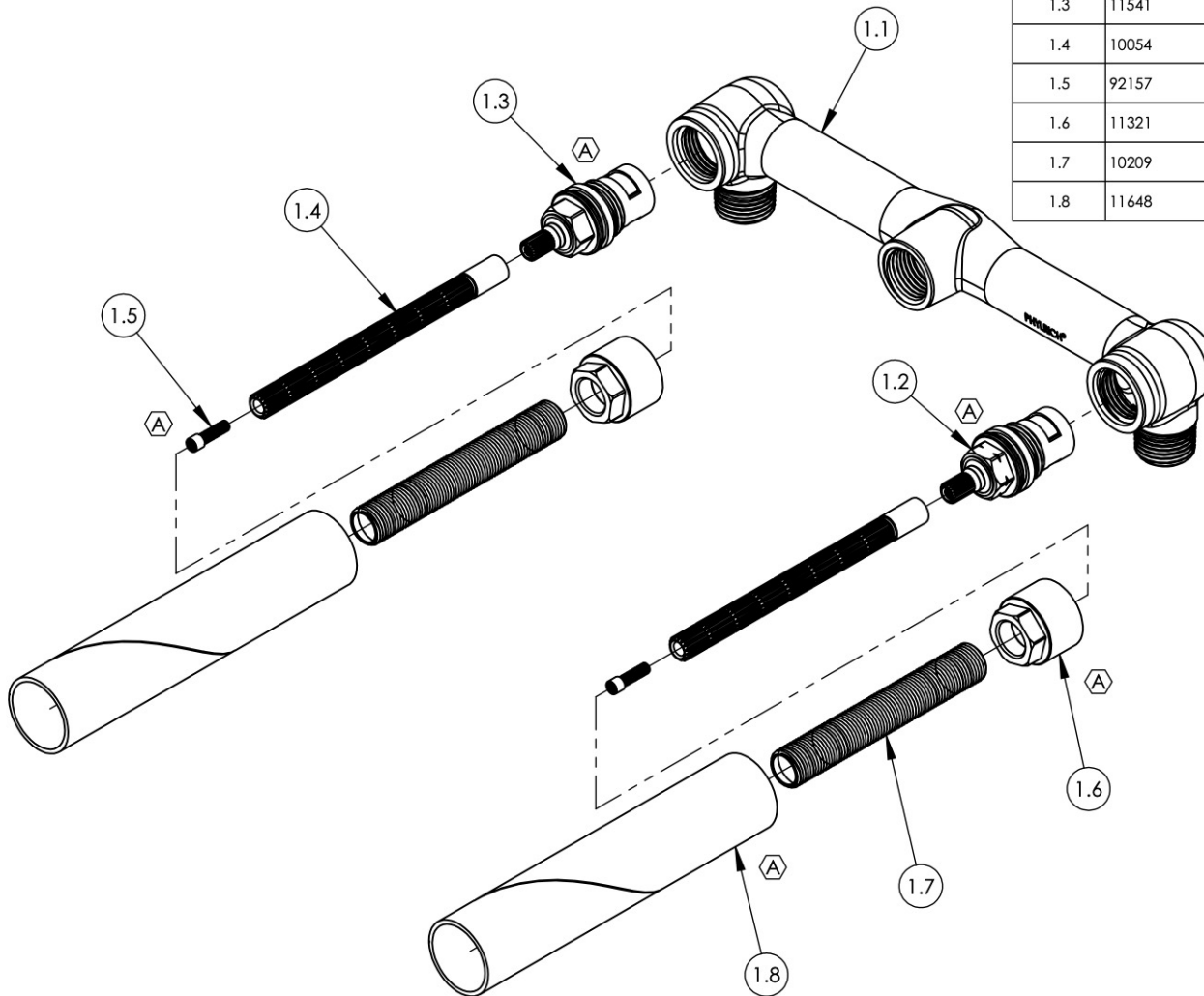
ITEM NO.	PART NO.	DESCRIPTION	QTY.
1	1-047	INWALL LAV, TWO HANDLE G1/2" 16PT, NO LEAD	1
1.1	10106	VALVE BODY, LAV INWALL	1
1.2	11540	CARTRIDGE, 1/2"G 20PT HOT, HI-TRQ LLL, EXACTO	1
1.3	11541	CARTRIDGE, 1/2" 20PT COLD, HI-TRQ LLL, EXACTO	1
1.4	10054	STEM EXTENSION, 6" LONG 20PT INT. TO 16PT LONG EXT. BROACH	2
1.5	92157	SCREW, SMALL HD M4X0.7 - 1/2"L	2
1.6	11321	CARTRIDGE RETAINER NUT	2
1.7	10209	SHANK, NIPPLE THREAD ALL 9/16"-20UN WITH .433"ID	2
1.8	11648	MUD GUARD, CARDBOARD, LONG	2

A

B

C

D



B3	A	UPDATED CARTRIDGES, RETAINER NUT, SCREW AND MUD GUARD	2/22/2018	RAH
ZONE	REV.	DESCRIPTION	DATE	APPROVED

REVISIONS

PROPRIETARY AND CONFIDENTIAL

THE INFORMATION CONTAINED IN THIS DRAWING IS THE SOLE PROPERTY OF RSS MANUFACTURING. ANY REPRODUCTION IN PART OR AS A WHOLE WITHOUT THE WRITTEN PERMISSION OF RSS MANUFACTURING IS PROHIBITED.

1261 LOGAN AVENUE
COSTA MESA, CALIFORNIA 92626
PHONE: 714.361.4800
FAX: 714.617.3120



-		-		INTERPRET GEOMETRIC DIMENSIONING & TOLERANCING IN ACCORDANCE WITH ASME Y14.5-2009 & ASME Y14.41-2003 STANDARDS. UNLESS OTHERWISE SPECIFIED, DIMENSIONS ARE IN INCHES. TOLERANCES ARE:	
NEXT ASSY	USED ON	FRACTIONS ±1/64"	DECIMALS X.X: ±.1 X.XX: ±.01 X.XXX: ±.005	ANGULAR ±.5°	
APPLICATION		NAME		DATE	
MATERIAL		DRAWN	MAF	6/18/2013	
FINISH		CHECKED	GRE		
DO NOT SCALE DRAWING					

ASSY, WALL LAVATORY SET VALVE

SIZE	ASM/PRT NO.	REV
A	8090536RNL	A

SCALE: 1:2.5	WEIGHT: lbs.	SHEET 1 OF 2
--------------	--------------	--------------

5

4

3

2

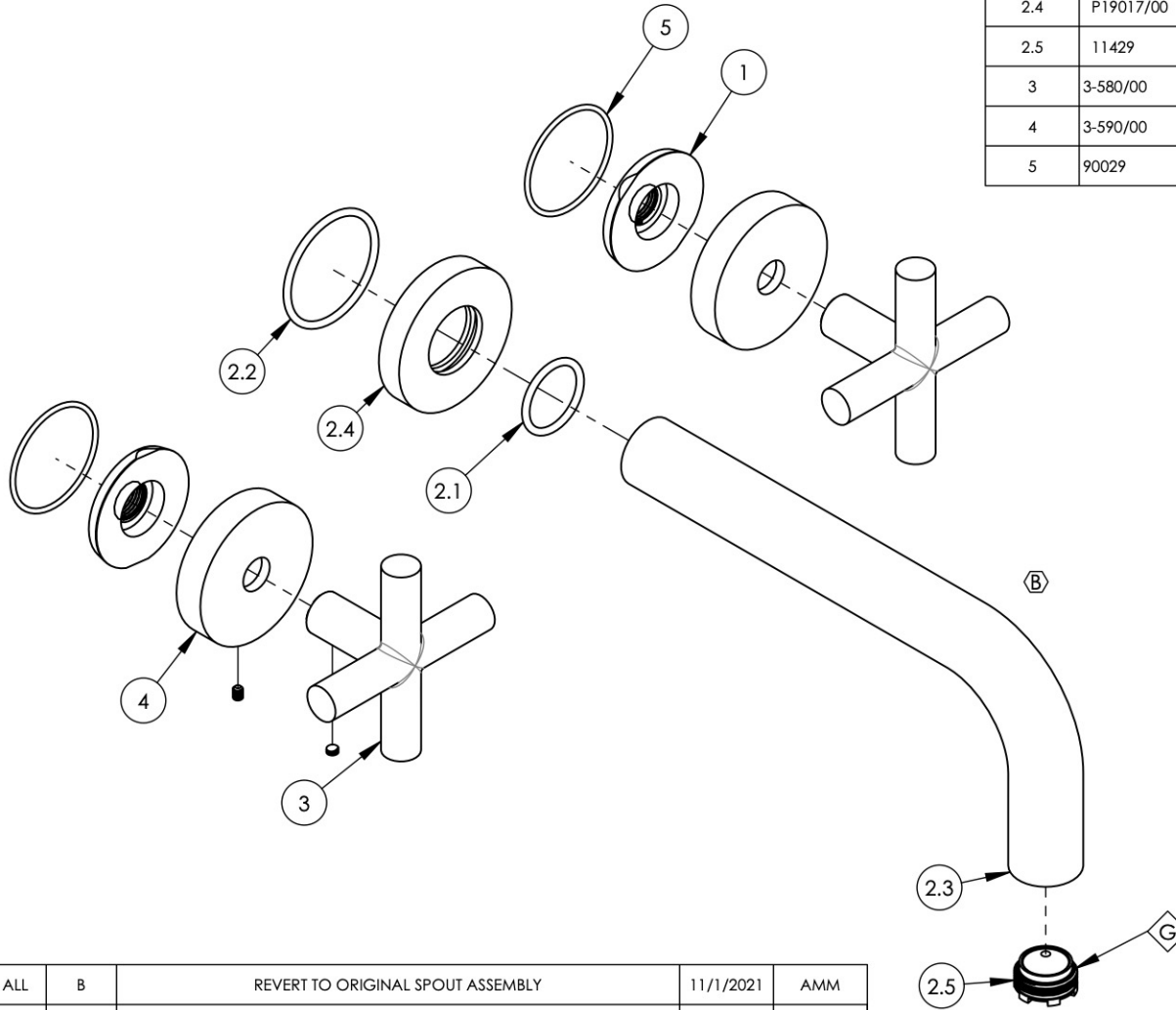
1

E

- NOTE(S):
 1. PART NUMBER, "/00" DENOTES PART SHALL HAVE FINISH.
 2. APPLY NSF COMPLIANT GREASE TO ANY O-RING, SEALING JOINTS, AND/OR PIVOTAL POINTS.
 3. APPLY NSF COMPLIANT LOCTITE TO THREADED AREA.
 4. APPLY NSF COMPLIANT REMOVABLE (BLUE) LOCTITE TO THREADED AREA.
 5. SILVER SOLDER JOINTS SHALL BE FULLY WETTED VIA CAPILLARY ACTION AND COMPLETELY NON-POROUS.



ITEM NO.	PART NUMBER	DESCRIPTION	QTY.
1	11003	SLEEVE MOUNT, WALL MT WIDESPREAD	2
2	3-414/00	ASSY. 7 1/2" C-C WALL LAV. SPOUT, BASIC	1
2.1	90119	O-RING, 15/16"ID X 1-1/8"OD X 3/32"THK, AS-568-119	1
2.2	90129	O-RING, 1-9/16"ID X 3/32THK, AS-568-129	1
2.3	P19018/00	7-1/2" WALL LAV SPOUT, BASIC SERIES	1
2.4	P19017/00	ESCUTCHEON, FOR SPOUT	1
2.5	11429	AERATOR CACHE JR, 1.2GPM, M21.5X1.0, 42.2260.450	1
3	3-580/00	HANDLE CROSS W/ SET SCREW, TRANSITION	2
4	3-590/00	ESCUTCHEON W/ SET SCREW, TRANSITION	2
5	90029	O-RING, 1-5/8"ID X 1-3/4"OD X 1/16"THK, AS-568-029	2



ALL	B	REVERT TO ORIGINAL SPOUT ASSEMBLY	11/1/2021	AMM
ZONE	REV.	DESCRIPTION	DATE	APPROVED
REVISIONS				

1261 LOGAN AVENUE
 COSTA MESA, CALIFORNIA 92626
 PHONE: 714.361.4800
 FAX: 714.617.3120

PHYL RICH[®]
 Defining Luxury Since 1959

PROPRIETARY AND CONFIDENTIAL
 THE INFORMATION CONTAINED IN THIS DRAWING IS THE SOLE PROPERTY OF PHYL RICH. ANY REPRODUCTION IN PART OR AS A WHOLE WITHOUT THE WRITTEN PERMISSION OF PHYL RICH IS PROHIBITED.
DO NOT SCALE DRAWING

WALL LAV SET, SPOUT 7-1/2" W/ CROSS, TRANSITION

SIZE A	ASM/PRT NO. 120-11/00	REV B
SCALE: 1:2.5	WEIGHT: lbs.	SHEET 1 OF 2