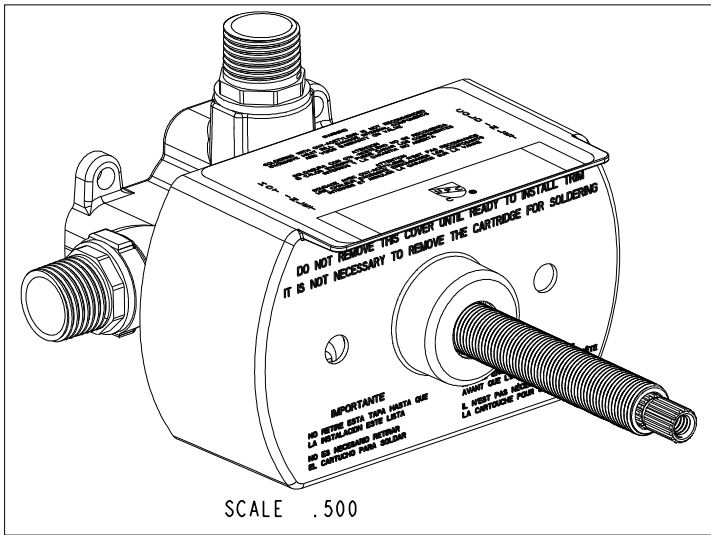
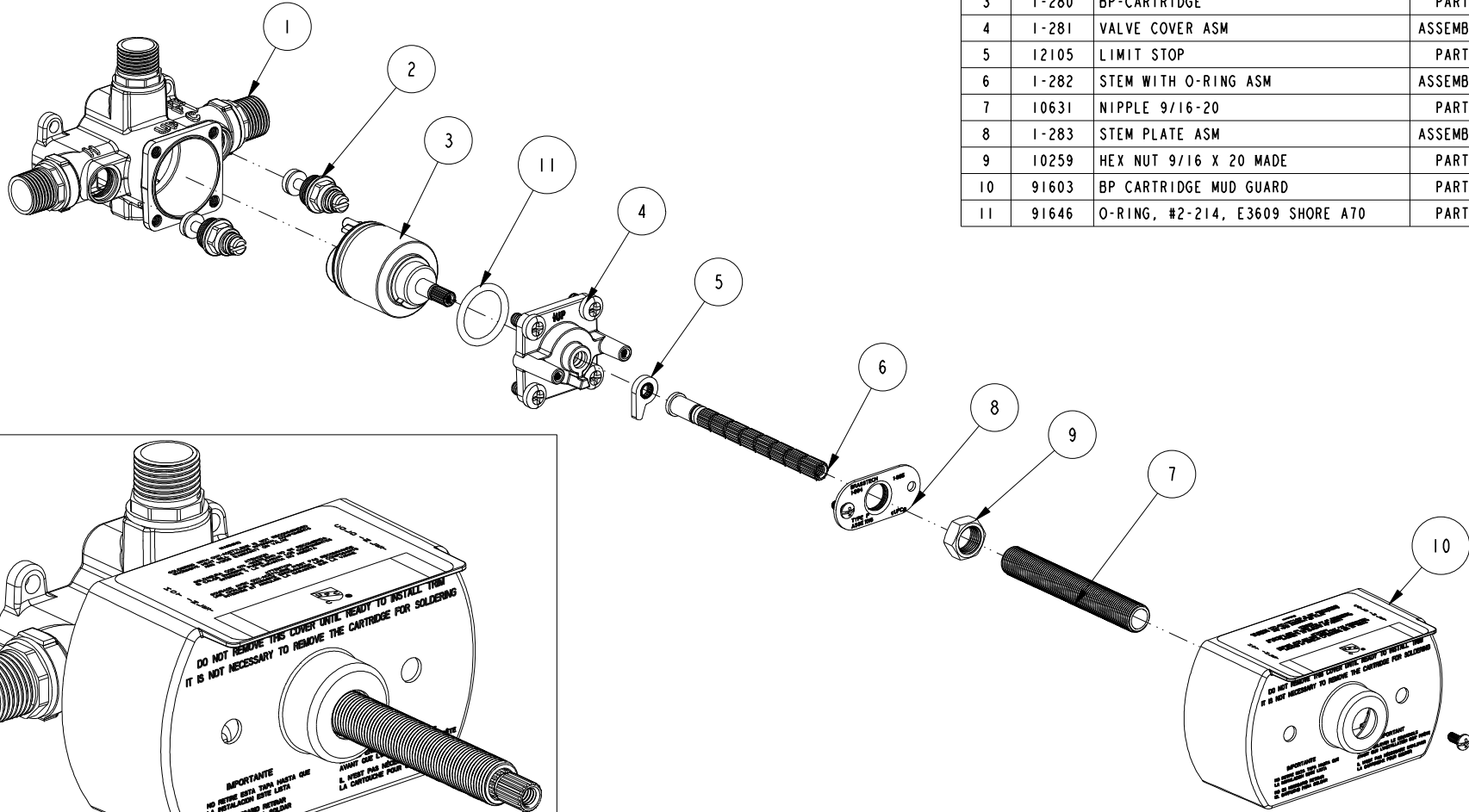


NOTES:

1. TO INSPECT ASSEMBLY, FOLLOW FIRST ARTICLE AND IN PROCESS INSPECTION SHEET.

BILL OF MATERIAL (CURRENT LEVEL)

ITEM	PT/ASSY	DESCRIPTION	TYPE	QTY.
1	1-284	BP VALVE BODY W/ ADAPTERS	ASSEMBLY	1
2	1-278	BP CARTRIDGE - STOP	ASSEMBLY	2
3	1-280	BP-CARTRIDGE	PART	1
4	1-281	VALVE COVER ASM	ASSEMBLY	1
5	12105	LIMIT STOP	PART	1
6	1-282	STEM WITH O-RING ASM	ASSEMBLY	1
7	10631	NIPPLE 9/16-20	PART	1
8	1-283	STEM PLATE ASM	ASSEMBLY	1
9	10259	HEX NUT 9/16 X 20 MADE	PART	1
10	91603	BP CARTRIDGE MUD GUARD	PART	1
11	91646	O-RING, #2-214, E3609 SHORE A70	PART	1



TESTING	-	-	-
ASSEMBLY	-	-	-
PLATING	-	-	-
POLISHING	-	NEXT ASSY	USED ON
MACHINING	-	APPLICATION	
TOOLING FIXTURE #	REMOVE ALL BURRS AND SHARP EDGES		

UNITS ARE: INCHES [MM]	
FRACTIONS	DECIMALS
±1/16"	.X ±.1 [2.5]
	.XX ±.06 [1.5]
(X.XXX) DENOTES CRITICAL DIMS.	
ALL THREADS ARE CRITICAL	
DRAWN	R.S. 10/03/12
CHECKED	J.M. 10/03/12
APPROVED	J.M. 10/03/12

BRASSTECH 2001 CARNEGIE AVE.
INCORPORATED SANTA ANA, CA 92705
(949) 417-5207

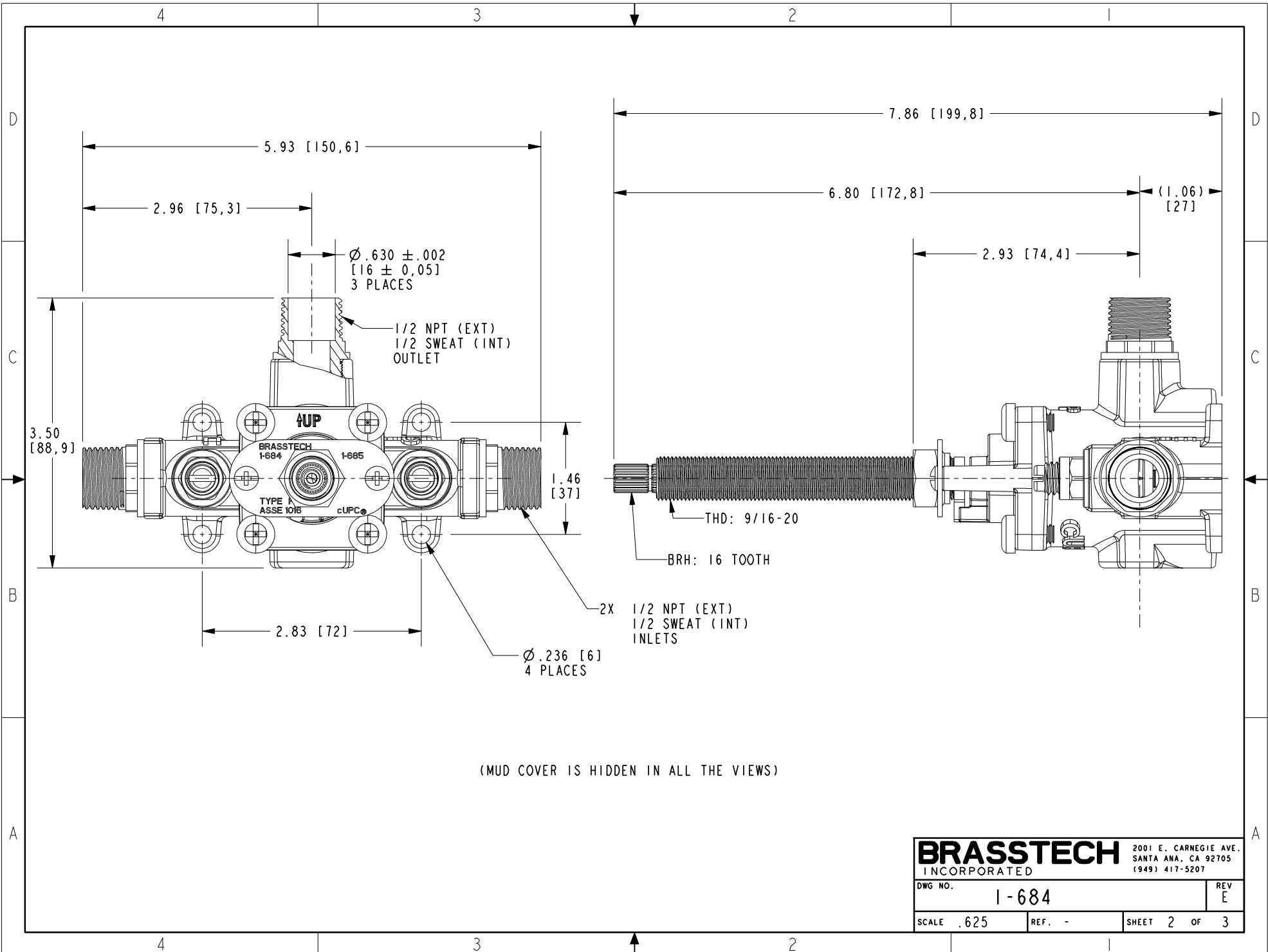
BP VALVE ASM

DWG NO.	1-684	REV	E
SCALE	.312	REF.	-
SHEET	1	OF	3

Ray Smith Digitally signed by Ray Smith
Date: 2021.05.26 16:17:16 -0400

COPYRIGHT 2005 BRASSTECH, INC. THESE DRAWINGS AND THE DESIGNS DEPICTED HEREIN ARE THE PROPRIETARY PROPERTY OF BRASSTECH. ANY USE OR REPRODUCTION IS SUBJECT TO THE EXPRESS APPROVAL OF BRASSTECH. UNAUTHORIZED USE IS STRICTLY PROHIBITED. ALL RIGHTS RESERVED.

ZONE	REV	DESCRIPTION	DATE	APPROVED
-	E	EN-4300kk	03/24/21	R.S.



BRASSTECH		2001 E. CARNEGIE AVE. SANTA ANA, CA 92705 (949) 417-5207
DWG NO.	1-684	REV E
SCALE .625	REF. -	SHEET 2 OF 3

4

3

2

1

D

D

C

C

B

B

A

A

TOP VIEW

TOP VIEW

WARNING

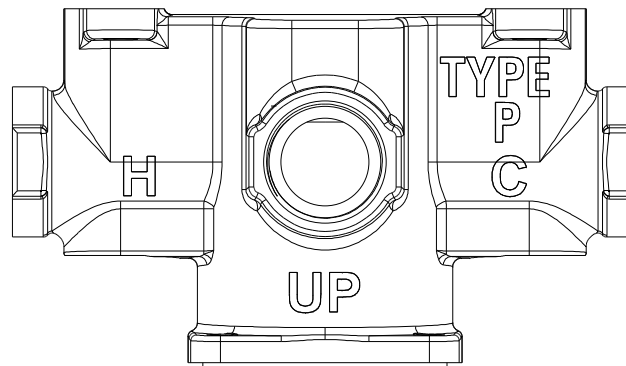
SOLDERING WITH OXY-ACETYLENE IS NOT RECOMMENDED
EXCESSIVE HEAT WILL DAMAGE INTERNAL COMPONENTS
AND VOIDS WARRANTY ON VALVE

ATENCION

SOLDADURA CON OXI-ACETILENO NO SE RECOMIENDA
EI CALOR EXCESIVO PUEDE DANAR LOS COMPONENTES
INTERNOS Y LA GARANTIA NO ABIERTA

ATTENTION

SOUDEGE AVEC OXY-ACETYLENE N'EST PAS RECOMMANDE
UNE CHALEUR EXCESSIVE ENDOMMAGER LES COMPOSANTS
INTERNES ET ANNULER LA GARANTIE SUR LA VANNE



SCALE .750

IMPORTANT

DO NOT REMOVE THIS COVER UNTIL READY TO INSTALL TRIM
IT IS NOT NECESSARY TO REMOVE THE CARTRIDGE FOR SOLDERING

IMPORTANTE

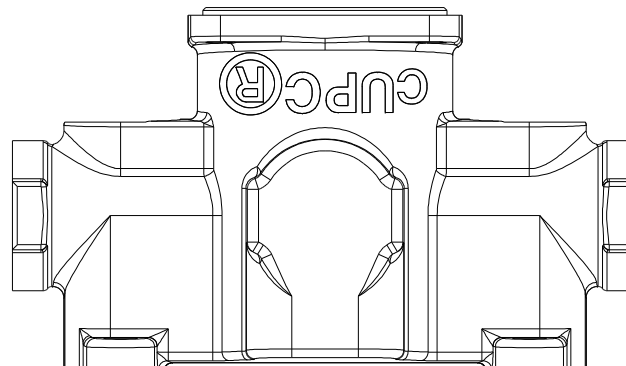
NO RETIRE ESTA TAPA HASTA QUE
LA INSTALACION ESTE LISTA

NO ES NECESARIO RETIRAR
EL CARTUCHO PARA SOLDAR

IMPORTANT

NE PAS ENLEVER LE COUVERCLE
AVANT QUE L'INSTALLATION SOIT PRÊTE

IL N'EST PAS NÉCESSAIRE D'ENLEVER
LA CARTOUCHE POUR SOUDER



SCALE .750

BRASSTECH
INCORPORATED

2001 E. CARNEGIE AVE.
SANTA ANA, CA 92705
(949) 417-5207

DWG NO.	1-684	REV	E
SCALE	.500	REF.	-
SHEET 3		OF 3	

4

3

2

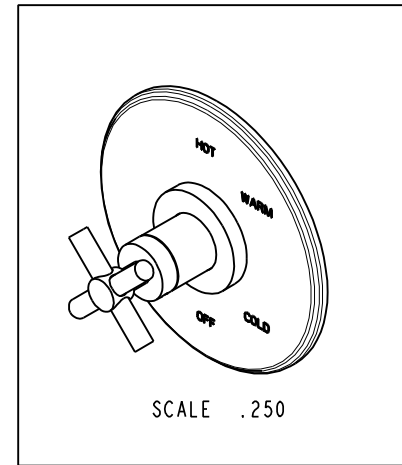
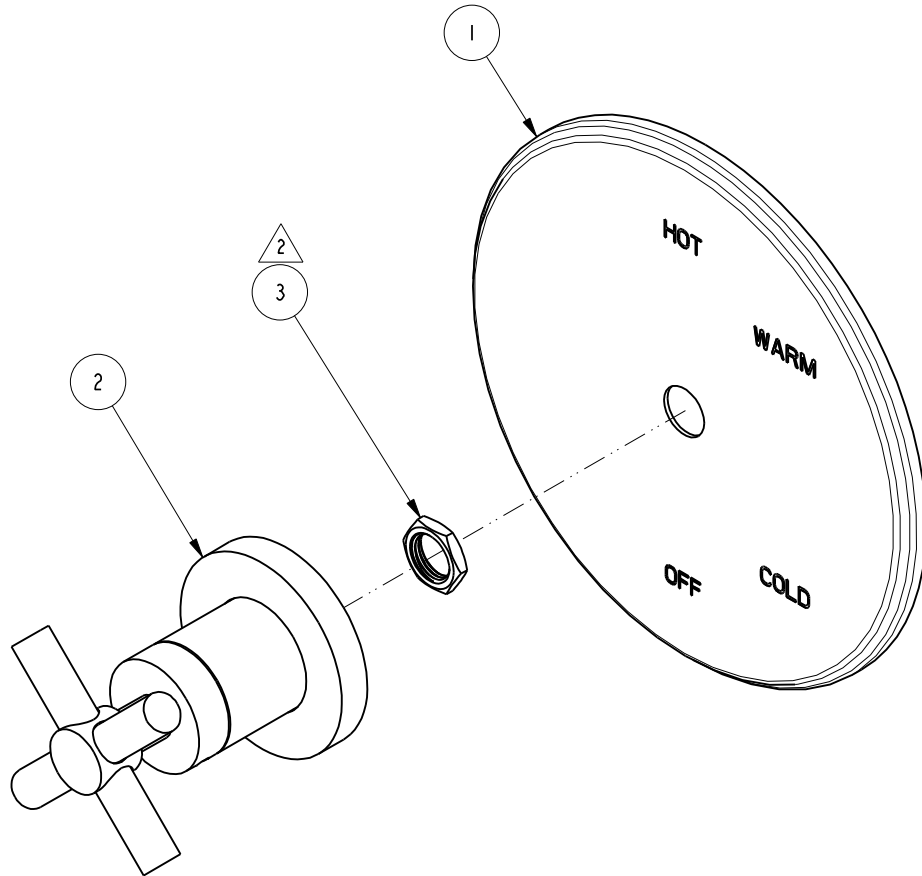
1

NOTES:

1. TO INSPECT ASSEMBLY, FOLLOW FIRST ARTICLE AND IN PROCESS INSPECTION SHEET.
2. SEAL NUT 10259 IN A PLASTIC BAG AND TAPE TO THE BACK OF THE TRIM PLATE.

BILL OF MATERIAL (CURRENT LEVEL)

ITEM	PT/ASSY	DESCRIPTION	TYPE	QTY.
1	2-439	COVERPLATE BP W/O DIVERTER	ASSEMBLY	1
2	3-227	HANDLE TRIM - STOP VALVE	ASSEMBLY	1
3	10259	HEX NUT 9/16 X 20 MADE	PART	1



ZONE	REV	DESCRIPTION	DATE	APPROVED
-	D	EN-4441	04/18/22	N.S.
-	C	EN-4300e	04/28/21	R.S.
-	B	EN-2997	09/01/16	J.A
-	A	EN-1544	04/28/10	J.M
-	-	EO-0451	11/17/04	-

Ned M. Santos
 Digitally signed by Ned M. Santos
 Date: 2022.06.28 15:34:25 -0700

COPYRIGHT 2005 BRASSTECH, INC. THESE DRAWINGS AND THE DESIGNS DEPICTED HEREIN ARE THE PROPRIETARY PROPERTY OF BRASSTECH. ANY USE OR REPRODUCTION IS SUBJECT TO THE EXPRESS APPROVAL OF BRASSTECH. UNAUTHORIZED USE IS STRICTLY PROHIBITED. ALL RIGHTS RESERVED.

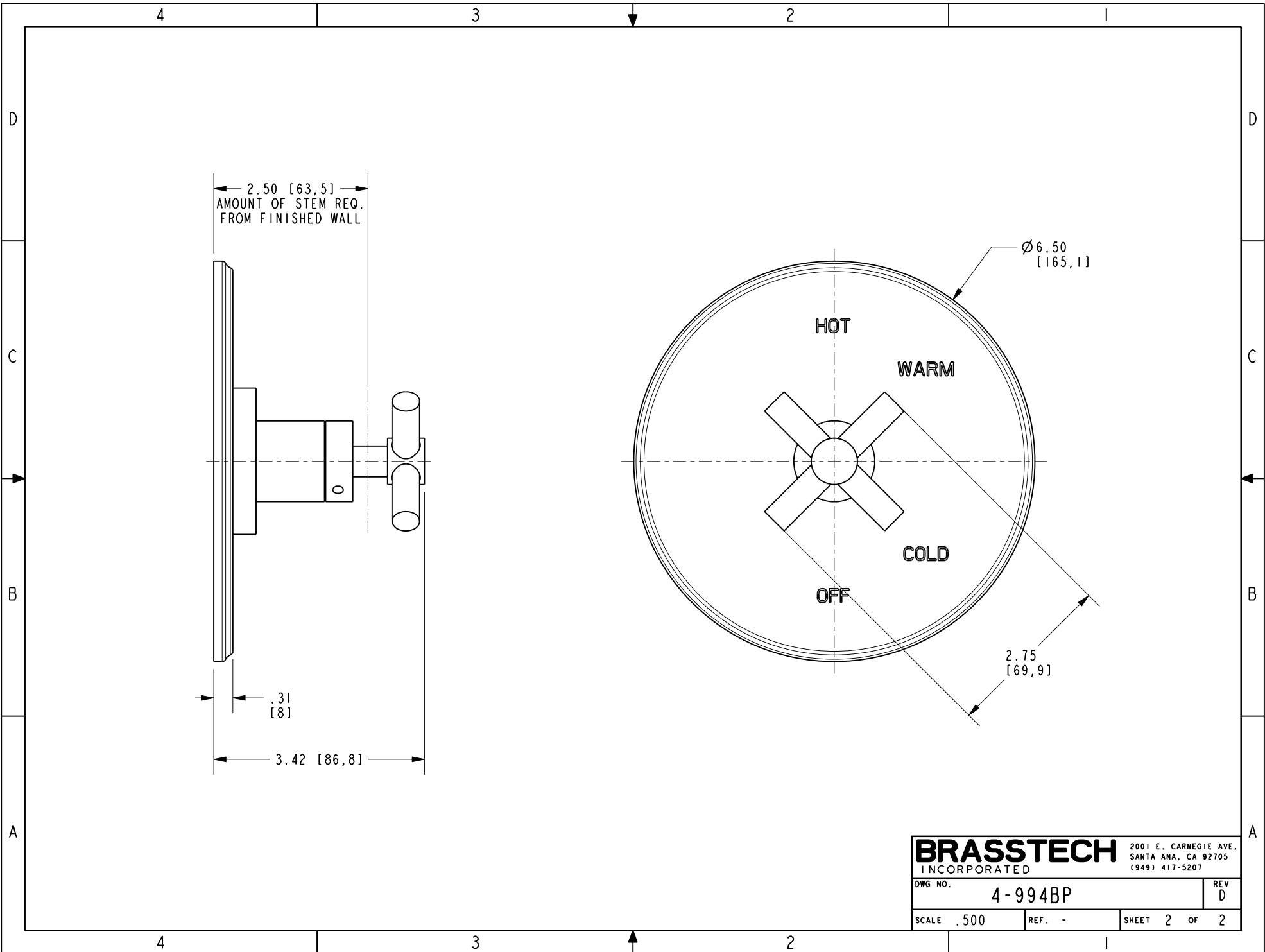
TESTING	ASSEMBLY	PLATING	POLISHING	MACHINING	TOOLING FIXTURE #	APPLICATION
-	-	-	-	-	-	REMOVE ALL BURRS AND SHARP EDGES
-	-	-	NEXT ASSY	USED ON	-	-

UNITS ARE: INCHES [MM]	
TOLERANCES ARE:	
FRACTIONS DECIMALS	ANGLES
±1/16"	±1°
.X ±.1 [2,5]	
.XX ±.06 [1,5]	
(X.XXX) DENOTES CRITICAL DIMS. ALL THREADS ARE CRITICAL	
DRAWN	J.T. 04/18/22
CHECKED	N.S. 04/18/22
APPROVED	N.S. 04/18/22

BRASSTECH 2001 CARNEGIE AVE. SANTA ANA, CA 92705 (949) 417-5207
 INCORPORATED

TRIM KIT LESS HAF

DWG NO.	REV
4-994BP	D
SCALE .500	SHEET 1 OF 2



BRASSTECH		2001 E. CARNEGIE AVE. SANTA ANA, CA 92705 (949) 417-5207
DWG NO.	4-994BP	REV D
SCALE .500	REF. -	SHEET 2 OF 2