

Cosmetic mirrors

17613019052 Cosmetic mirror

PRODUCT



EEK: ,

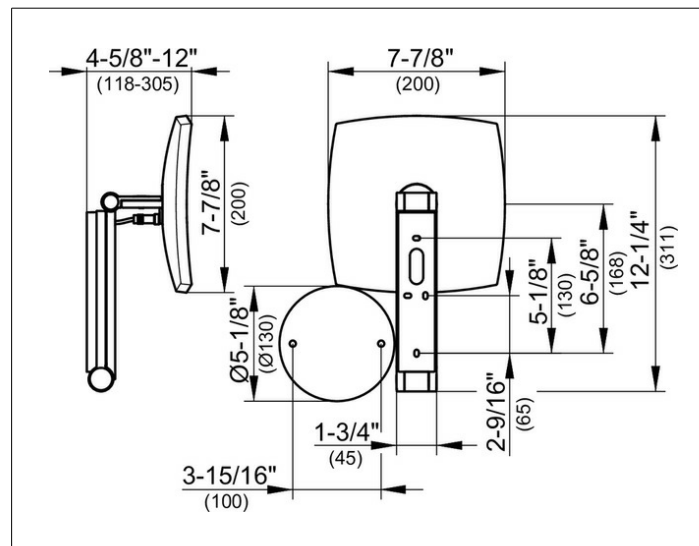
SURFACE

chrome-plated

DIMENSION

2 Lichtfarben, ohne Kabel

DRAWING



SPECIFICATIONS

KEUCO iLook_move cosmetic mirror, 17613019052

high quality cosmetic mirror, square,
chrome-plated, illuminated with adjustable light color from
2700 kelvin (warm white) to 6500 kelvin (daylight),
operated by glass control panel with capacitive touch sensor and
LED display
on pivoted rail,
surface wall-mounted with 4 fixing points
for an optimal load distribution
adjustable in three dimensions, one-sided mirror, concave
magnification factor x 5,
Height wall mounting 7-1/8", Width ca. 1-3/4",
max. Height ca. 19-11/16", External dimensions 7-7/8" x 7-7/8",
max. depth ca. 12",
Power supply via hard wire installation,
concealed power cable
12 V in-wall adapter, input 110 V,
standby consumption: < 0.5 watt