



# SIZE GUIDES



### WOMEN'S SIZE CHART

	WAIST	HEIGHT	CHEST
<b>X-SMALL</b>	<b>24-27"</b>	<b>&lt;5'0"</b>	<b>30-33</b>
<b>SMALL</b>	<b>26-29"</b>	<b>5'0"-5'5"</b>	<b>33-35</b>
<b>MEDIUM</b>	<b>28-31"</b>	<b>5'2"-5'9"</b>	<b>35-37</b>
<b>LARGE</b>	<b>30-34"</b>	<b>5'4"-5'11"</b>	<b>37-40</b>
<b>X-LARGE</b>	<b>33-37"</b>	<b>5'6"-6'2"</b>	<b>40-42</b>
<b>XX-LARGE</b>	<b>36-41"</b>	<b>5'8"-6'5"</b>	<b>42-44</b>
<b>XXX-LARGE</b>	<b>40-45"</b>	<b>5'10" &gt;</b>	<b>44-46</b>

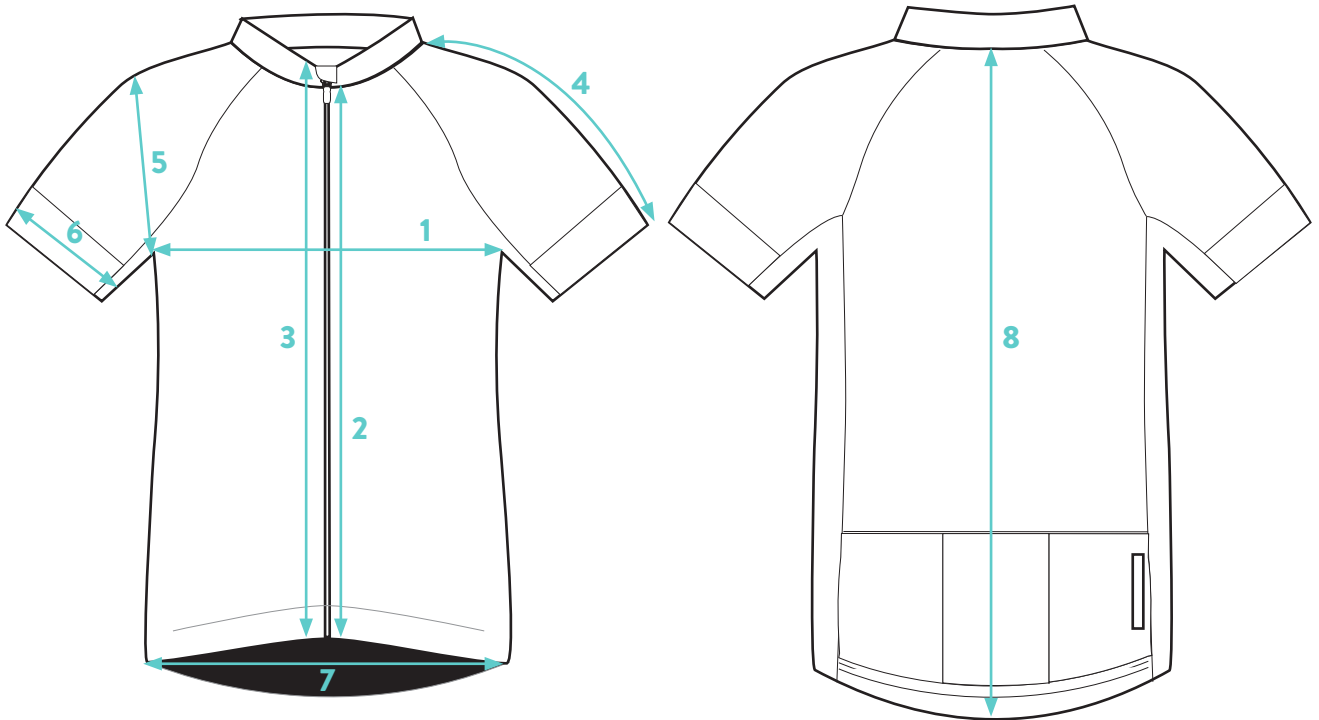
### MEN'S SIZE CHART

	WAIST	HEIGHT	CHEST
<b>X-SMALL</b>	<b>26-29"</b>	<b>5'0"-5'2"</b>	<b>33-35</b>
<b>SMALL</b>	<b>28-31"</b>	<b>5'1"-5'9"</b>	<b>35-37</b>
<b>MEDIUM</b>	<b>30-34"</b>	<b>5'4"-5'11"</b>	<b>37-40</b>
<b>LARGE</b>	<b>33-37"</b>	<b>5'6"-6'2"</b>	<b>40-42</b>
<b>X-LARGE</b>	<b>36-41"</b>	<b>5'8"-6'5"</b>	<b>42-44</b>
<b>XX-LARGE</b>	<b>40-45"</b>	<b>5'10"&gt;</b>	<b>44-46</b>
<b>XXX-LARGE</b>	<b>44-50"</b>	<b>5'11"&gt;</b>	<b>46-48</b>

(SEE FOLLOWING PAGES FOR INDIVIDUAL GARMENT MEASUREMENTS)

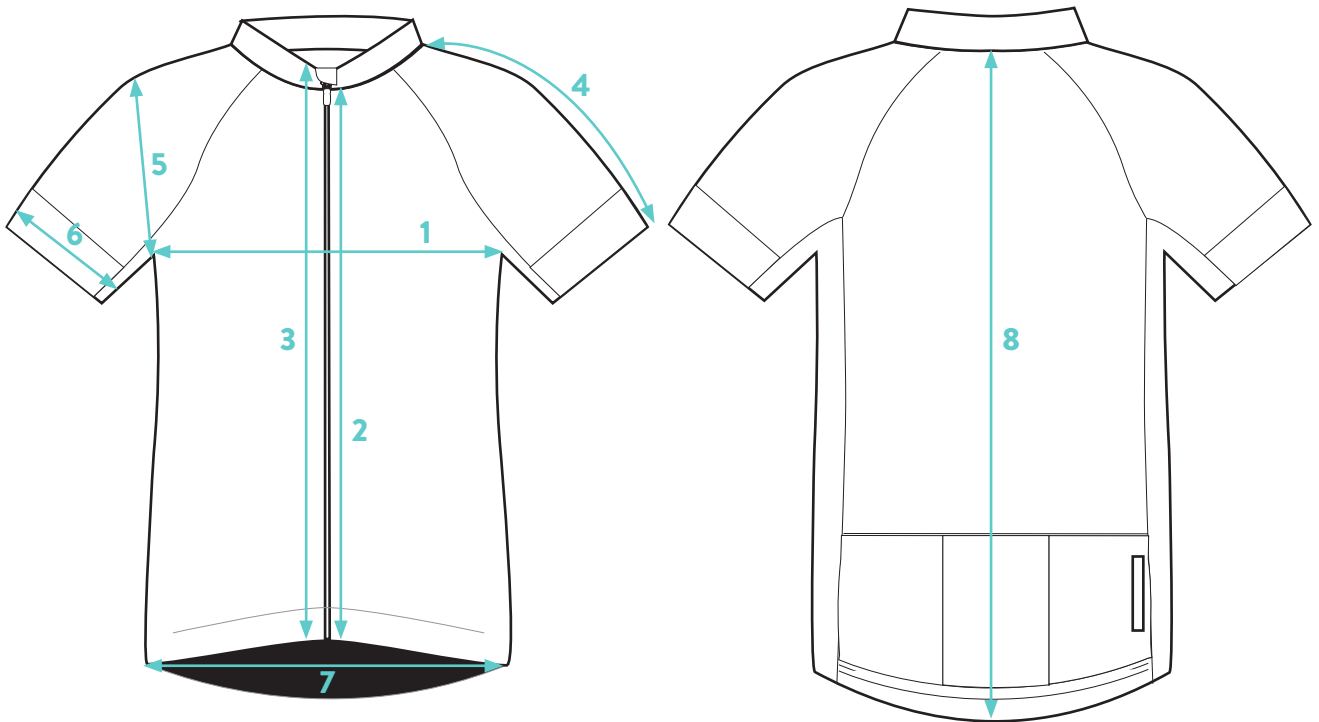


WOMEN'S JERSEY (CM)								
MEASUREMENT		XS	S	M	L	XL	XXL	XXXL
1	1/2 CHEST	40	42	44	47	50	53	56
2	CENTRE FRONT LENGTH	48	49.5	51	52.5	54	55.5	57
3	FRONT ZIP LENGTH	51	52.5	54	55.5	57	58.5	60
4	SLEEVE LENGTH	29	30.5	32	33.5	35	36.5	38
5	1/2 SLEEVE OPENING	11.5	12	12.5	13.2	13.9	14.6	15.3
6	1/2 SLEEVE WIDTH	15	15.5	16	16.7	17.4	18.1	18.8
7	HEM WIDTH	36	38	40	43	46	49	52
8	CENTRE BACK LENGTH	60	61.5	63	64.5	66	67.5	69



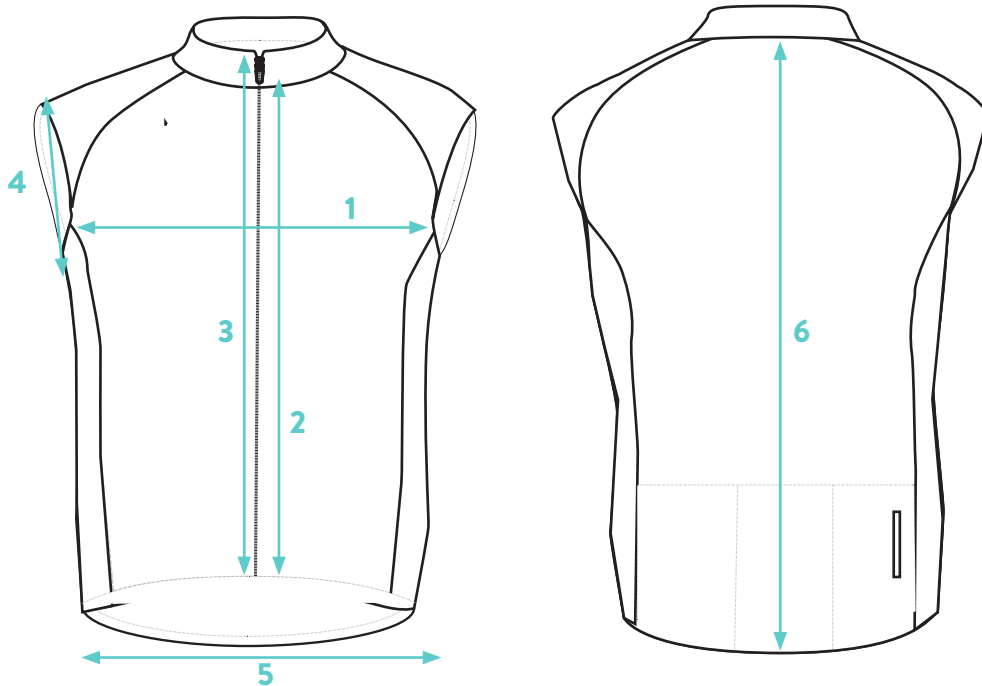


MEN'S JERSEY (CM)								
MEASUREMENT		XS	S	M	L	XL	XXL	XXXL
1	1/2 CHEST	41	43	45	48	51	54	57
2	CENTRE FRONT LENGTH	48	50	52	54	56	58	60
3	FRONT ZIP LENGTH	52	54	56	58	60	62	64
4	SLEEVE LENGTH	35	36.5	38	39.5	41	42.5	44
5	1/2 SLEEVE OPENING	11.5	12	12.5	13.2	13.9	14.6	15.3
6	1/2 SLEEVE WIDTH	15	15.5	16	16.7	17.4	18.1	18.8
7	HEM WIDTH	36	38	40	43	46	49	52
8	CENTRE BACK LENGTH	64	66	68	70	72	74	76



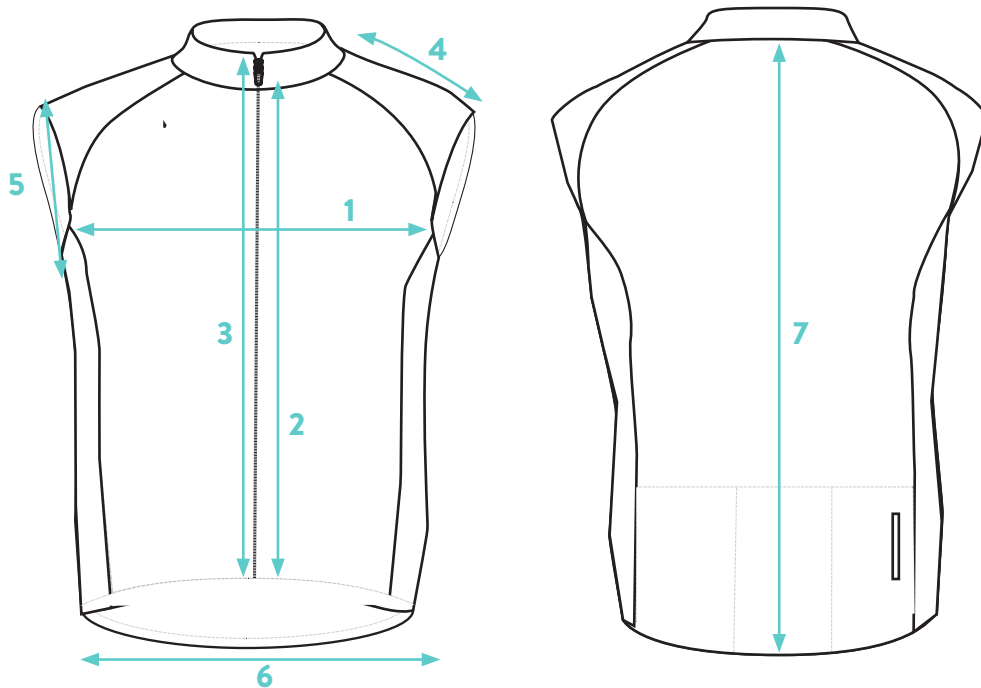


WOMEN'S GILET (CM)								
MEASUREMENT		XS	S	M	L	XL	XXL	XXXL
1	1/2 CHEST	40	42	44	47	50	53	56
2	CENTRE FRONT LENGTH	47	48.5	50	51.5	53	54.5	56
3	FRONT ZIP LENGTH	52	53.5	55	56.5	58	59.5	61
4	1/2 SLEEVE OPENING	19	19.5	20	20.7	21.4	22.1	22.8
5	HEM WIDTH	33	35	37	40	43	46	49
6	CENTRE BACK LENGTH	58	60	62	65	68	71	74



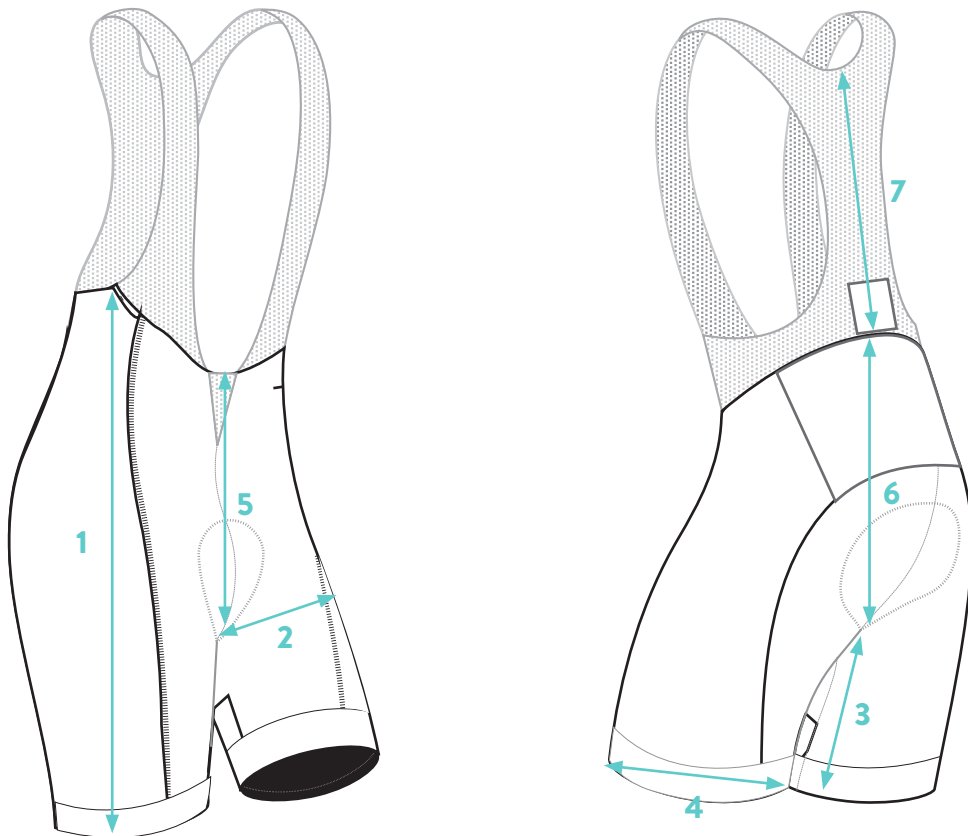


MEN'S GILET (CM)								
MEASUREMENT		XS	S	M	L	XL	XXL	XXXL
1	1/2 CHEST	41	43	45	48	51	54	57
2	CENTRE FRONT LENGTH	48	50	52	54	56	58	60
3	FRONT ZIP LENGTH	53	55	57	59	61	63	65
4	SLEEVE LENGTH	9.5	10.25	11	11.75	12.5	13.25	14
5	1/2 SLEEVE OPENING	21	21.5	22	22.7	23.4	24.1	24.8
6	HEM WIDTH	26	28	30	33	36	39	42
7	CENTRE BACK LENGTH	64	66	68	70	72	74	76



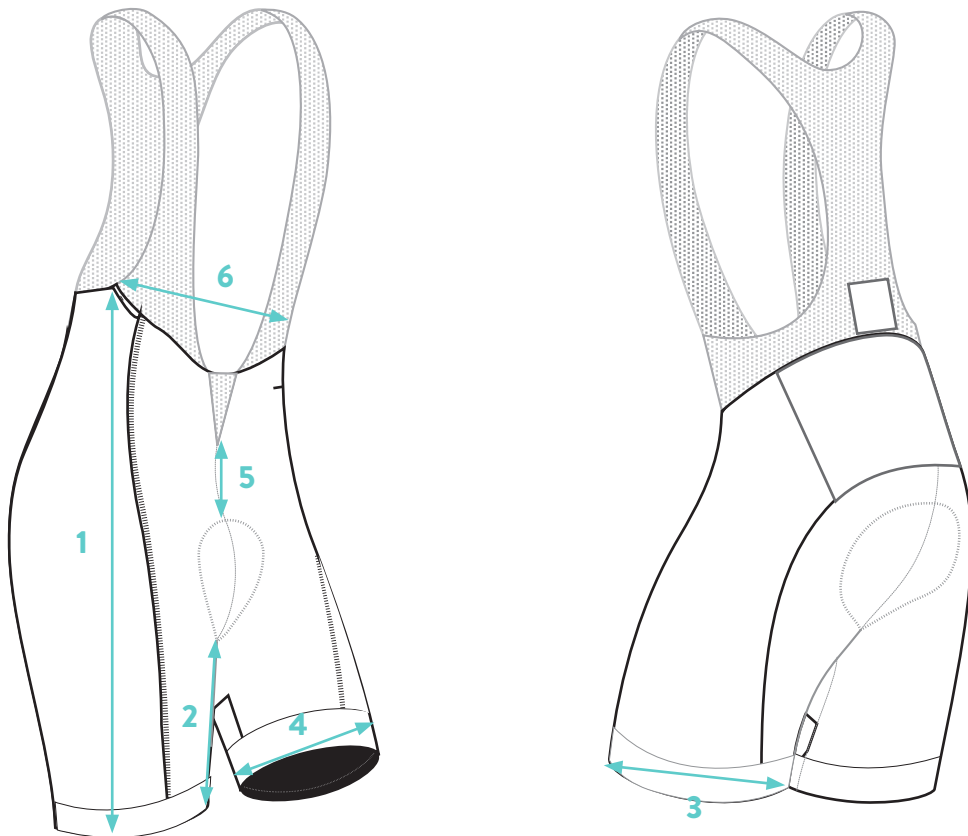


WOMEN'S BIB SHORTS (CM)								
MEASUREMENT		XS	S	M	L	XL	XXL	XXXL
1	LATERAL LENGTH WITHOUT BIB	41.5	43.5	45.5	47.5	49.5	51.5	53.5
2	1/2 THIGH	20.5	21.7	23	24.2	25.5	26.7	28
3	INSEAM	21.5	22.5	23.5	24.5	25.5	26.5	27.5
4	1/2 LEG OPENING	16.9	17.7	18.5	19.3	20.1	20.9	21.7
5+6	FRONT RISE TO BACK RISE	61.5	64	66.5	69	71.5	74	76.5
7	MESH HEIGHT FROM WAIST	25	25	25	25	25	25	25





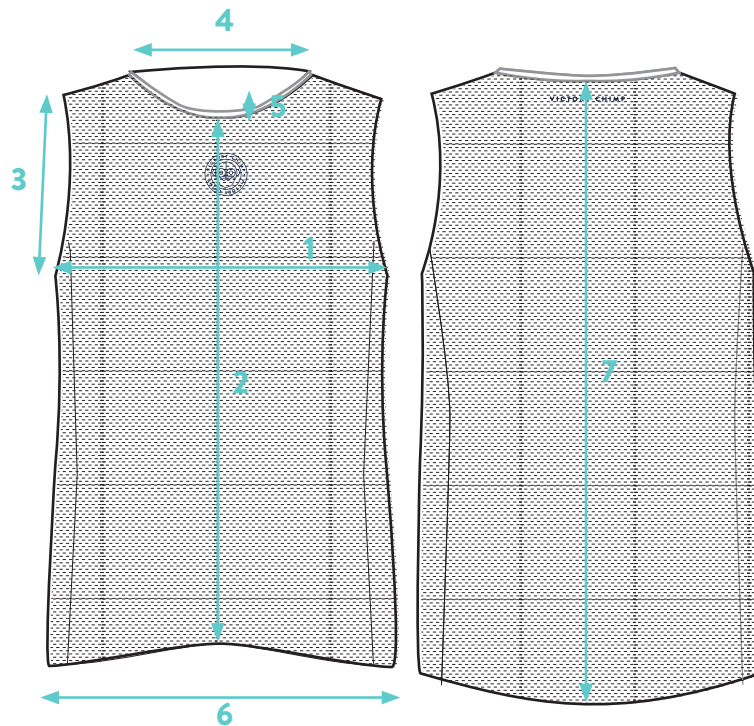
MEN'S BIB SHORTS (CM)								
MEASUREMENT		XS	S	M	L	XL	XXL	XXXL
1	LATERAL LENGTH WITHOUT BIB	46.5	48	49.5	51	52.5	54	55.5
2	LENGTH STEP	24	25	26	27	28	29	30
3	1/2 LEG OPENING RELAXED	17	18	19	20	21	22	23
4	1/2 TIGHT	22.3	23.5	24.8	26	27.3	28.5	29.8
5	WAIST TO PAD DISTANCE	3.6	4.4	5.2	6	6.8	7.6	8.4
6	1/2 BUST	32.2	33.8	35.4	37	38.6	40.2	41.8





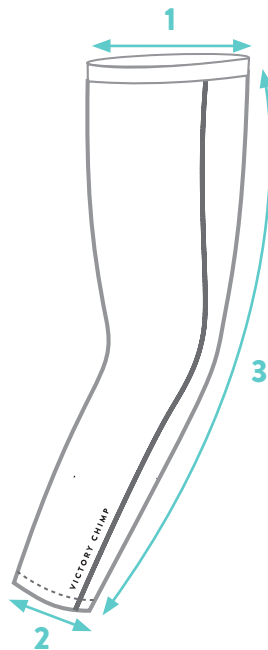


BASELAYER (CM)								
MEASUREMENT		XS	S	M	L	XL	XXL	XXXL
1	1/2 CHEST		33	35	37	39	41	
2	CENTRE FRONT LENGTH		53	55	57	59	61	
3	1/2 SLEEVE WIDTH		21	22	23	24	25	
4	1/2 COLLAR		20	21	22	23	24	
5	COLLAR HEIGHT		1.5	1.5	1.5	1.5	1.5	
6	HEM WIDTH		67	69	71	73	75	
7	CENTRE BACK LENGTH		33	35	37	39	41	





ARM WARMERS (CM)								
MEASUREMENT		XS	S	M	L	XL	XXL	XXXL
1	WIDTH AT TOP	11.5	12	12.5	13	13.5	14	14.5
2	WIDTH AT BOTTOM	8.5	9	9.5	10	10.5	11	11.5
3	LENGTH	39	40.5	42	43.5	45	46.5	48



SOCKS					
SIZE	EU	UK WOMEN	UK MEN	US WOMEN	US MEN
SMALL	36-39	3-6	-	5-8	4-7
MEDIUM	40-43	6-9	6-9	8-11	7-10
LARGE	44-47	-	9-12	-	10-13

**PLEASE NOTE CAPS & BUFFS ONE SIZE FITS ALL**



VICTORYCHIMP.CC