

NEOLINE G-TECH X27



NEOLINE



GPS DATABASE
FOR POLICE
RADARS



A mirror with dual-channel dashcam and GPS database of safety camera warning



VERSATILITY

NEOLINE G-Tech X27 is a panoramic rearview mirror, dual-channel FULL HD + HD high-resolution dashcam, parking camera and GPS safety camera informer.



UNDER CONTROL

NEOLINE G-Tech X27 rear camera records all the detail of the traffic situation behind the car in HD resolution, and when the rear gear is turned on, an image for comfortable parking is displayed on the mirror screen.



GPS BASE



GPS DATABASE OF SAFETY CAMERA WARNING

The GPS-module of NEOLINE G-Tech X27 is integrated with the database of safety cameras coordinates and their characteristics. NEOLINE G-Tech X27 contains information about the cameras in Russia, Europe, Belarus, Ukraine, Kazakhstan, Uzbekistan, Azerbaijan, Armenia.

The databases are being updated every 2 weeks and are available on the Neoline website.







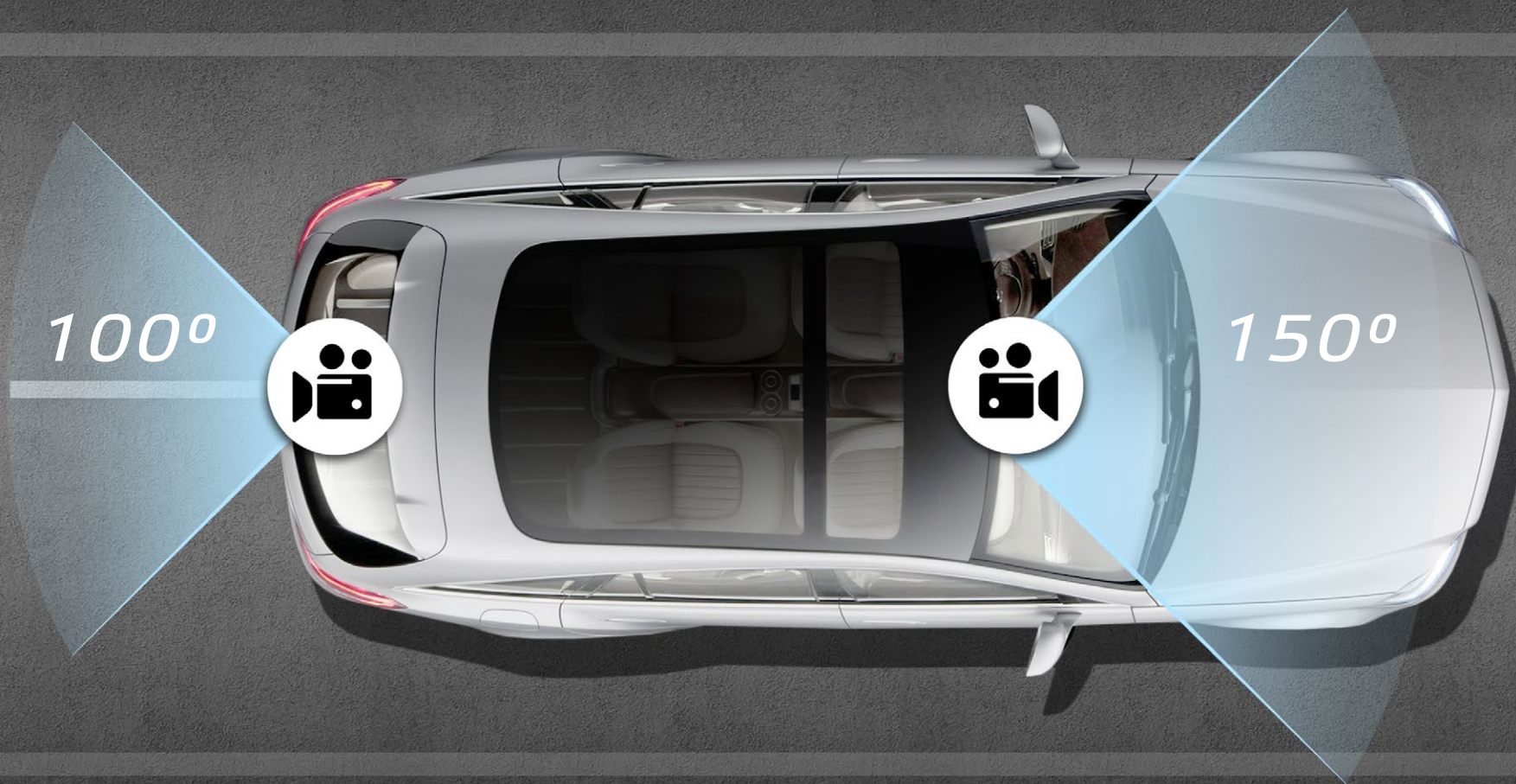
INTELLIGENT PROCESSING OF SPEED CALCULATION CAMERAS

A distinctive feature of NEOLINE G-Tech X27 is the intelligent processing of average speed control cameras. The algorithm installed in the NEOLINE G-Tech X27 sounds an alert when you leave the monitored area, notifies about speeding, correctly processes other GPS-points in the controlled area, etc.



TYPES OF SAFETY WARNING CAMERAS AND TRAFFIC CONTROL CAMERAS

CAMERA TYPE		GPS MODULE	STATIC TRAFFIC CONTROL CAMERAS	
	Strelka-ST, Strelka-plus, Strelka-M	✓	CONTROL TYPE	CAMERA NOTIFICATION
	Average speed control camera	✓	Allocated band control	✓
	Low-coverage radars (Cordon, Krechet, Robot, MESTA, MTR CD/CT, Gatso, Multanova F6, Ramer, Ramet etc.)	✓	Bus lane control	✓
	Static radar systems (Cordon, Chris, Arena, Vocord, Auto-Uragan-RS, Rapira, Odissey, etc.)	✓	Roadside control	✓
			Crosswalk control	✓
			Pedestrian crosswalk control	✓
			“Backside” photo shooting	✓



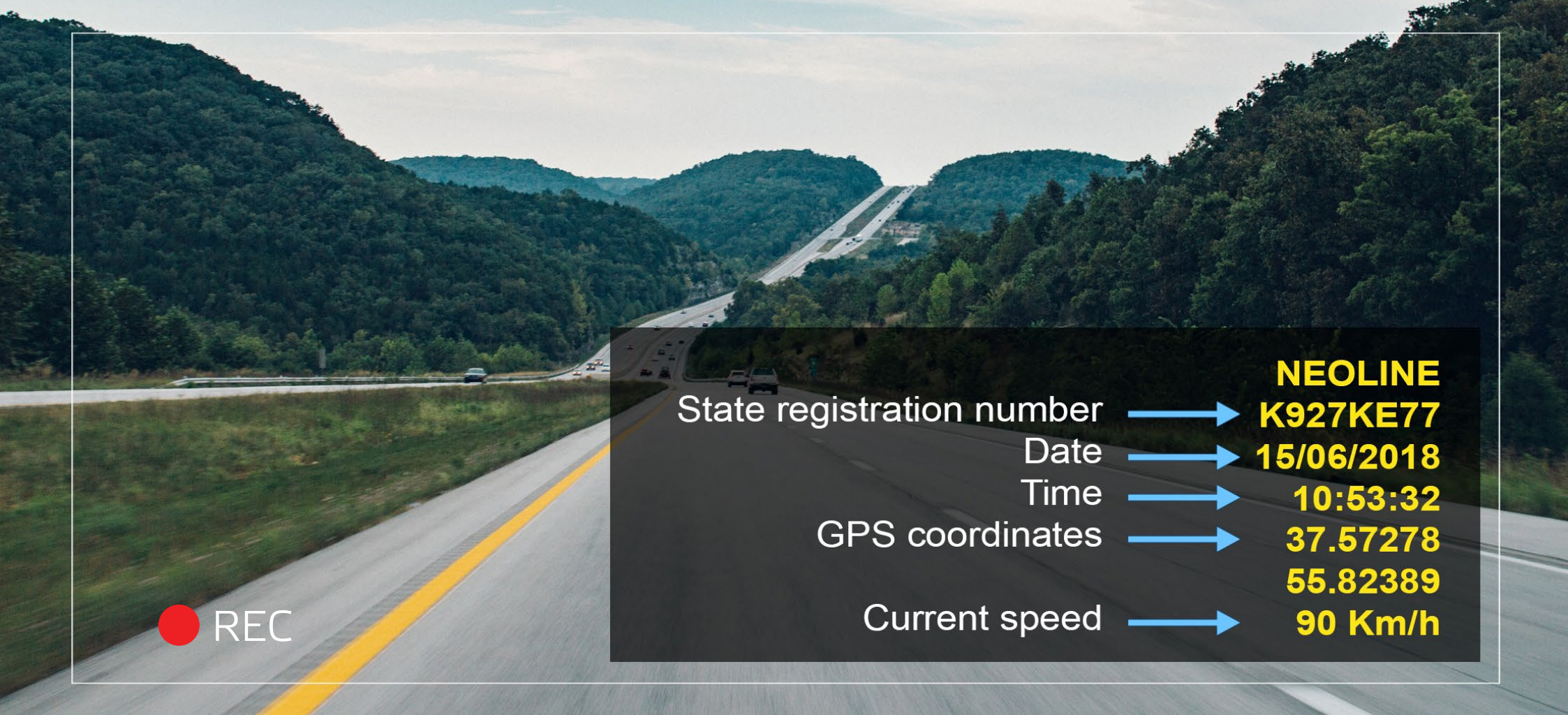
WIDE VIEWING ANGLE

Due to the wide viewing angle of the front (150 °) and the auxiliary (100 °) cameras NEOLINE G-Tech X27 covers all 5 lanes of the roadway without distorting the picture. The dashcam will truly record everything that happens on the road.



RECORDING INTERRUPTION ALERT SYSTEM

To prevent an emergency recording interruption or the absence of a memory card, NEOLINE G-Tech X27 has an alert function. The dashcam gives a special sound signal.



State registration number	→	NEOLINE K927KE77
Date	→	15/06/2018
Time	→	10:53:32
GPS coordinates	→	37.57278 55.82389
Current speed	→	90 Km/h

NEOLINE G-TECH X27 IS AN IMPORTANT SUPPORT IN ACCIDENTS

A video file with the date and time is an indisputable fact that confirms the driver's innocence. NEOLINE G-Tech X27 allows you to add date and time image to the video clip and a recording from an auxiliary camera will clarify the circumstances of the accident.



EASY TO USE

A large dashcam display – 4.3 inches – is located in the center of the mirror. The screen of the recorder is not visible on the surface of the mirror when the device is turned off. It is certainly convenient as the driver is not distracted from the road.



UNIVERSAL FASTENING

Convenient fastening NEOLINE G-Tech X27, consisting of rubberized clips, allows you to install the device on almost any regular mirror without damaging it.



SPECIFICATIONS NEOLINE G-TECH X27

- Resolution:
Main camera Full HD 1920 * 1080 (30 fps)
Rear camera HD 1280 * 720 (30 fps)
- Viewing angle:
Main camera 150 °
Rear camera 100 °
- Screen size: 4.3 inches
- GPS module: external
- Built-in battery: 600 mAh
- Video recording format: MOV (H.264)
- Built-in microphone / speaker: yes
- G-sensor: yes
- Parking mode: yes
- Cyclic recording: 1/3 min: yes
- Continuous recording: yes
- Auto power off: yes
- Date / time fixed on the screen: yes
- Car state registration number fixed on the screen: yes
- Geolocation fixed on the screen: yes
- Memory cards: MicroSD 8GB - 32GB (Class 10)
- Storage temperature: from -20° to + 70
- Operating temperature: from -10° to + 40
- Input voltage: DC 5V, 1.5 A
- Input voltage of recorder: DC 12-24 V
- Dimensions: 284 x 99 x 16 mm
- Weight: 328 g

PACKAGE CONTENTS:

- Neoline G-Tech X27 dashcam
- Rear camera
- USB cable
- Car charging device
- External GPS module
- User's Manual
- Warranty certificate
- Installation kit



NEOLINE G-TECH X27

Official website: www.neoline.com Technical support: support@neoline.com