

To ensure that play is both fine safe and fun, please review these operating instructions:

Failure to follow on all safety instructions may result in injury or property damage none of which Force 1 will be held liable for as proper warnings are outlined in the manual.

- Upon use of this product the end user assumes responsibility and Force 1 cannot be held liable for any personal injury and/or property damage
- This item contains fast moving parts, motors and/or other wiring. When using it, basic precautions should always be followed including but not limited to the following:
 - Keep your eye on the product at all times
 - Tie back hair or wear a hat to avoid entanglement or injury
 - Keep hands, hair and loose clothing away from moving parts when the power switch is turned ON
 - Please ensure the product is turned off when not in use and is stored properly

⚠WARNING: CHANGES OR MODIFICATIONS TO THIS UNIT NOT EXPRESSLY APPROVED BY THE SELLER WILL AVOID THE USER'S AUTHORITY TO OPERATE THE EQUIPMENT.



www.force1rc.com

AGES
6+



INSTRUCTION MANUAL

Please read carefully before operation and keep for future reference.

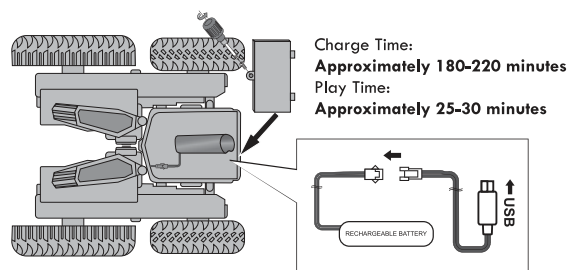
⚠ CAUTION: BATTERY-OPERATED PRODUCT

Recommended for kids ages 6+. Please exercise caution when charging the battery.
Adult supervision is required.

BATTERY CHARGING/INSTALLATION

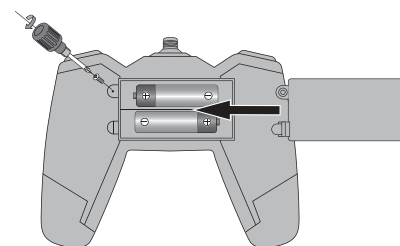
1. Charge the included rechargeable battery before use
2. Plug the battery cable into the USB charging cable, then connect the USB plug into a USB charging port (computer, phone charger, power bank, or car charger)
3. When charging, the LED on the USB charger will glow red and go out fully charged
4. Turn the transmitter and RC car OFF before battery installation
5. To install, remove the battery covers with a Phillips screwdriver
6. Install transmitter batteries (2 x AA batteries) with correct polarity as shown in **Picture 2** and install the car USB battery as shown in **Picture 1**
7. Replace battery covers and tighten the screws

Picture 1. RECHARGEABLE BATTERY USB



USES 1 x 3.7 V RECHARGEABLE BATTERY
(INCLUDED)

Picture 2.

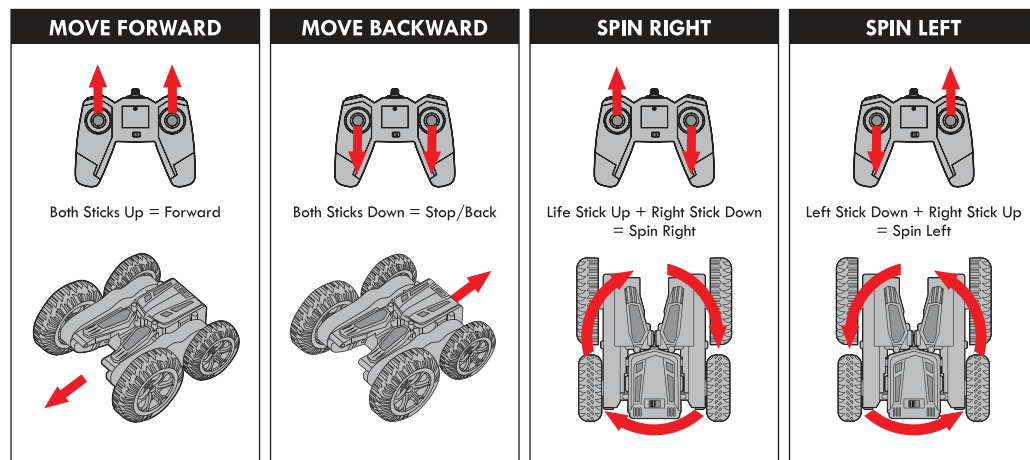


USES 2 x 1.5V AA BATTERIES
(NOT INCLUDED)

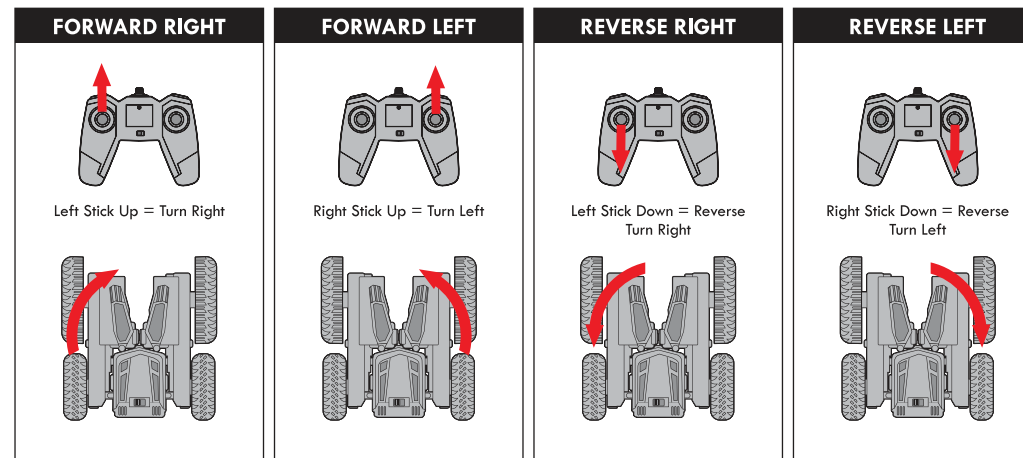
HOW TO PLAY

1. Switch both the transmitter and the RC Car ON
2. The RC Car and the transmitter will automatically pair
3. When your RC Car starts to slow down, charge the rechargeable car battery using the included USB charging cable. If your car still seems slower than normal, install new AA batteries in your transmitter.
4. While the car is spinning in Tornado mode, different words will cycle through and illuminate in the Tornado spin!

BASIC OPERATIONS CONTROLS



BASIC OPERATIONS CONTROLS



BATTERY SAFETY INSTRUCTIONS

1. Do not leave the battery charging and unattended
2. Do not expose the battery to direct sunlight
3. Do not leave the battery plugged in to the car while not in use/storing the car
4. Do not short circuit terminals
5. Do not recharge non-rechargeable batteries
6. Do not recharge rechargeable batteries without adult supervision
7. Do not mix different types of batteries. Do not mix old and new batteries
8. Dispose old and used batteries properly. Do not put batteries on fire as they may explode
9. Regularly check the USB charging cable for damages. If any damage is found, discontinue use and replace the USB charger. Please contact support@force1rc.com if you need help replacing the charger.
10. Remove exhausted batteries from the toy
11. Remove battery from the toy before charging
12. Do not overcharge batteries. Charging time is approximately 180-220 minutes
13. Store the battery in a lipo-safe battery bag (not included)

CARE AND MAINTENANCE

1. Always remove batteries from the RC Car and the remote controller when not in use
2. To clean, wipe the toy gently with a clean, damp cloth. Do not submerge in water.
3. Keep your RC toy away from direct sunlight and direct heat

ADDITIONAL GUIDELINES

1. When your RC Car is running low on battery power, it may not be able to perform flips
2. Your RC Car cannot perform flips on smooth surfaces
3. Make sure that the RC Car battery is fully charged before playing

For fast, friendly service please contact us at
support@force1rc.com



⚠ WARNING:
CHOKING HAZARD—Small parts.
Not for children under 3 yrs.