

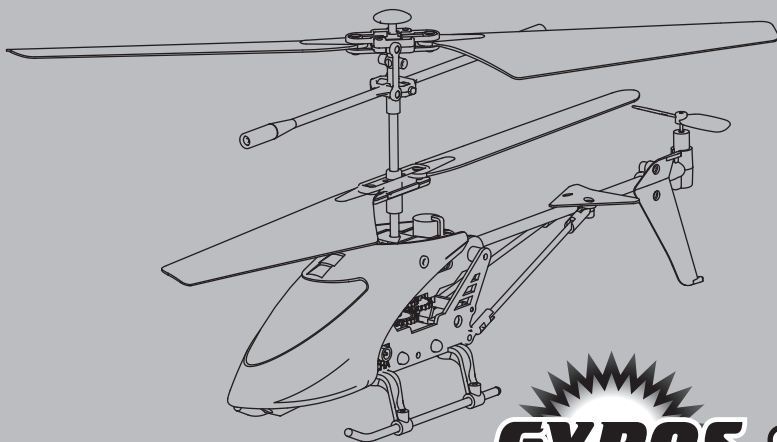
S107H

Wind Hawk

3 CH 2.4 GHZ HOVER FUNCTION REMOTE CONTROL HELICOPTER

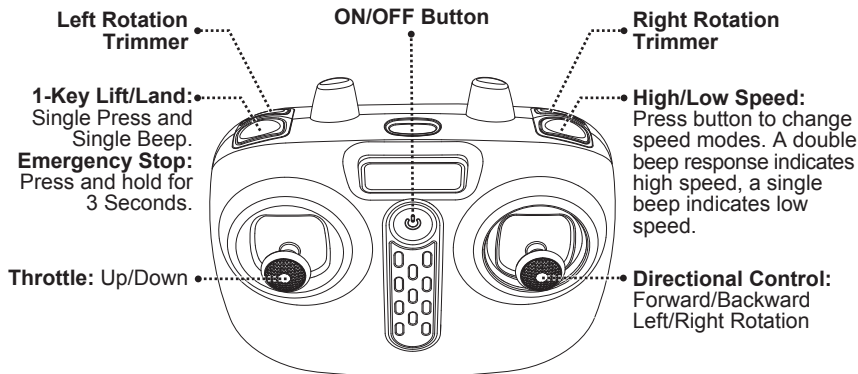


®



It is strongly recommended to read the manual carefully before flying. Inappropriate operations may lead to unintended crashes or injuries (of the pilot or third parties).

TRANSMITTER OVERVIEW

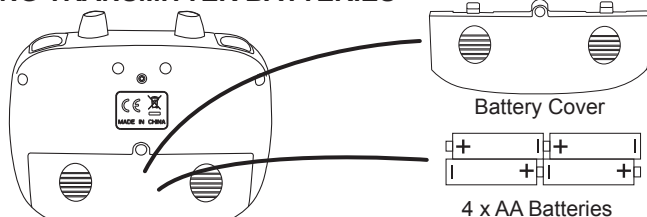


PAIRING PROCEDURE:

Turn on the helicopter, then the transmitter; the power indicator light will flash rapidly. Push the Throttle (Left Stick) fully up, then fully down; when the indicator lights stop flashing, the remote transmitter is paired.

TRANSMITTER BATTERY INSTALLATION

INSTALLING TRANSMITTER BATTERIES



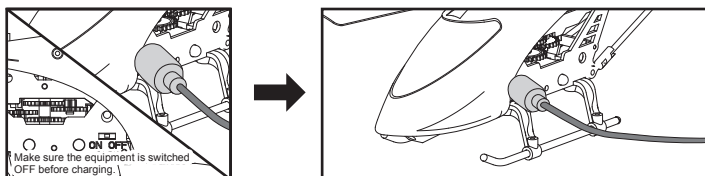
Open the battery cover on the back side of the transmitter and install 4 alkaline batteries (AA, not included) with the + and – ends facing as shown. Close the battery cover after installing.

CAUTION



- Insert batteries with correct polarities matched to the battery compartment
- Do not mix old and new batteries
- Do not mix alkaline, standard (carbon-zinc), or rechargeable (nickel-cadmium) batteries
- Do not use rechargeable batteries
- Remove exhausted batteries

CHARGING THE HELICOPTER



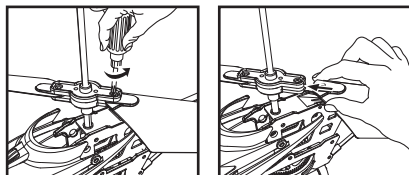
- Turn the helicopter OFF. (ON/OFF Switch is on the right side of the helicopter)
- Insert the charging cable into a USB port (the charging cable indicator light will turn on)
- Connect the charging cable to the helicopter (the charging cable light will turn off)
- Unplug the charger cable when the light turns on

The charging time is about 60 minutes; flying time is about 5 minutes.

Important: battery charging information

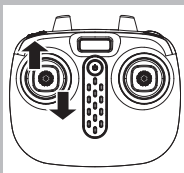
- Rechargeable batteries should be removed from the toy before being charged.
- Rechargeable batteries should only be charged under the supervision of adults.
- Exhausted batteries should be removed from the aircraft.
- Caution: Risk of explosion if battery is replaced with incorrect ones. Please dispose the batteries according to the instructions.

BLADE INSTALLATION



1. Use a small Phillips screwdriver to carefully remove the screws.
2. Please ensure the blades are attached to the correct motors; B-labeled blades should be on the upper motor, A-labeled blades should be on the lower motor.

FLYING INSTRUCTIONS



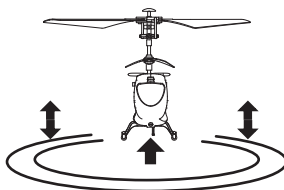
Throttle Operation

PAIRING PROCEDURE:

- Turn on the helicopter (ON/OFF Switch is on the right side of the helicopter)
- Turn on the transmitter; the power indicator light will flash rapidly
- Push the Throttle (Left Stick) fully up, then fully down (see diagram)
- The indicator lights will turn solid, indicating a successful pairing
- The helicopter is ready to fly

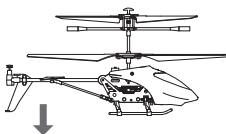
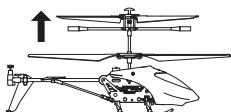
ALTITUDE HOLD

Use the Throttle (Left Stick) to achieve the desired altitude, then release the stick. The helicopter will maintain this altitude while allowing forward, backward, and yaw to be controlled normally.



UP/DOWN

Push the Throttle (Left Stick) up or down to see the helicopter ascend or descend.



LEFT/RIGHT ROTATION (YAW)

Move the Right Stick left or right to rotate the helicopter left or right.



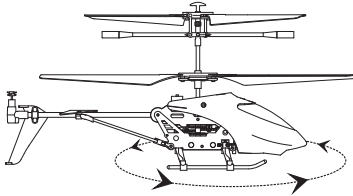
FORWARD/BACKWARD

Move the Right Stick up or down to fly the helicopter forward or backward.



TRIM ADJUSTMENTS

If the helicopter begins to rotate quickly while hovering (left stick is not moved left/right), please adjust the trim button on the transmitter until the helicopter starts hovering as normal.

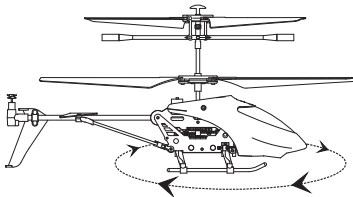


Counter-Clockwise Rotation



Right Rotation Trimmer Button

If the helicopter rotates counter-clockwise while hovering (without using the Directional Control Stick), use the Right Rotation Trimmer button to correct and regain stability.



Clockwise Rotation



Left Rotation Trimmer Button

If the helicopter rotates clockwise while hovering (without using the Directional Control Stick), use the Left Rotation Trimmer button to correct and regain stability.

IMPORTANT SAFETY GUIDELINES

1. Non-rechargeable batteries should not be recharged; Batteries should be inserted with a correct polarity; Different types of batteries, new, or used batteries should not be mixed.
2. The supply terminals should not be short-circuited.
3. Only use the included charger.
4. Please use adult supervision when flying/assembling the RC helicopter.
5. Open the battery cover of the toy with a small Phillips head screwdriver.
6. Please keep this packaging for important safety information.
7. The charger used with the helicopter should be examined regularly, to ensure the cord, plug, enclosures and other parts are in good condition. In the event of any damages, please stop using it until it is repaired or replaced.
8. Do not touch the rotating rotor and avoid loose clothing or hair that could be caught in the rotor. Do not fly the helicopter near the face.
9. Please keep these instructions for future reference.

Warning: Changes or modifications to this unit not expressly approved by the party responsible for compliance could void the user's authority to operate the equipment.

NOTE: This equipment has been tested and found to comply with the limits for a Class B digital device, pursuant to Part 15 of the FCC Rules. These limits are designed to provide reasonable protection against harmful interference in a residential installation. This equipment generates, uses and can radiate radio frequency energy and, if not installed and used in accordance with the instructions, may cause harmful interference to radio communications.

However, there is no guarantee that interference will not occur in a particular installation. If this equipment does cause harmful interference to radio or television reception, which can be determined by turning the equipment off and on, the user is encouraged to try to correct the interference by one or more of the following measures:

- Reorient or relocate the receiving antenna.
- Increase the separation between the equipment and receiver.
- Connect the equipment into an outlet on a circuit different from that to which the receiver is connected.
- Consult the dealer or an experienced radio/TV technician for help.

"This device complies with FCC radiation exposure limits set forth for general population (uncontrolled exposure).

This device must not be collocated or operating in conjunction with any other antenna or transmitter."

Declaration of Conformity Inserts:

"Hereby, GuangDong Syma model drone Industrial co.,ltd, declares that this drone is in compliance with the essential requirements and other relevant provisions of Directive 2014/53/EU."

A copy of the full DoC is attached.

Operating Instructions:

*The product is made out of light and thin materials. Inappropriate operations may lead to unintended crashes. It may cause the helicopter to be easily damaged.

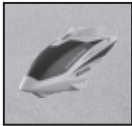
*After flying the helicopter avoid touching the motors. The motors may be very hot and can cause burns if touched.

Flying Environment:

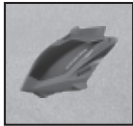
- Suitable for Indoor Areas: Take caution when flying with air conditioner/electric fan flows.
- Spacious Areas: Recommended flying area size: 20 feet X 20 feet wide, and 10 feet high.
- Calm Areas: It is strongly recommended to fly in areas without air flows. Do not fly in areas with: air conditioner/electric fans or table lamps, or other electric equipment which may be easily damaged.

Accessories/Parts (Optional)

For your reference, the included parts and pieces for the RC helicopter are displayed below:



Canopy A



Canopy B



Tail Stabilizers A



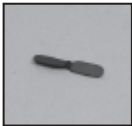
Tail Stabilizers B



The Main Motor
Blade A



The Main Motor
Blade B



Tail Motor Blade



Main Seat



Balance Beam



Connective Parts



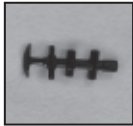
Landing Skids



Drive Gears



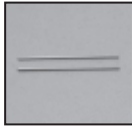
Blade Clips



Main Rotor
Assembly



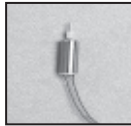
Tail Components



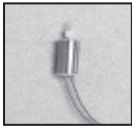
Tail Boom
Brace



Main Frame Golden
Support Components



Rotor A



Rotor B



Tail Rotor



Battery



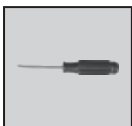
Circuit Board



USB Charging
Cable



Transmitter



Screwdriver

Manufacturer

Guangdong Syma Model Aircraft Industrial Co., Ltd.

The Crossing of No.2 West Xingye Road and North Xingye Road, Laimei.

Industrial Park Chenghai District Shantou City Guangdong China.

The company has the right of final interpretation
of this instruction manual statement.