

INSTRUCTION MANUAL

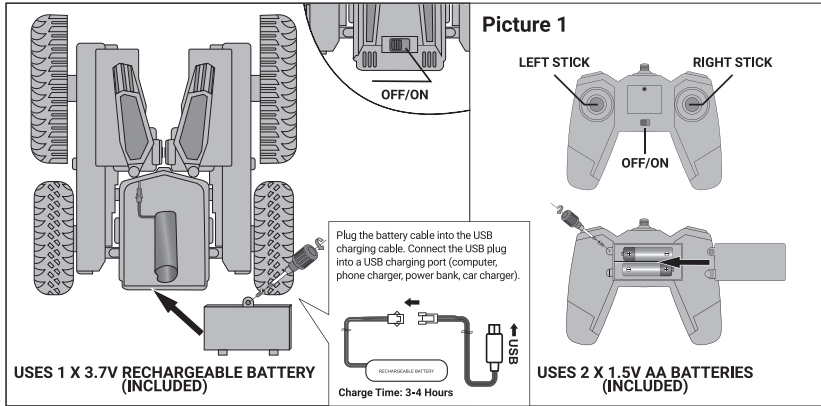
Please read carefully before operation and keep for future reference.

⚠ CAUTION: BATTERY-OPERATED PRODUCT

Recommended for kids ages 6+. Please exercise caution when charging the product. Adult supervision is advised.

BATTERY INSTALLATION

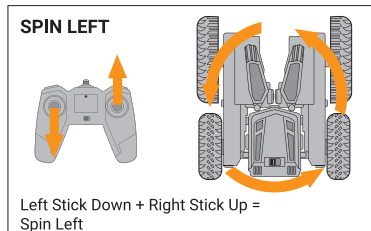
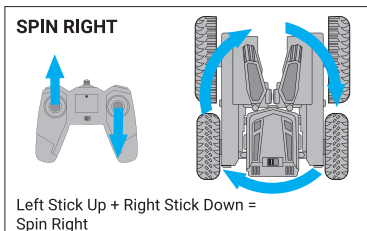
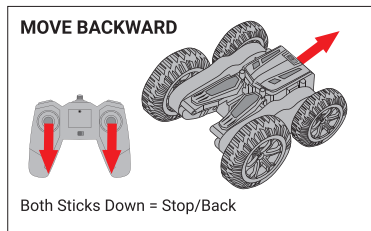
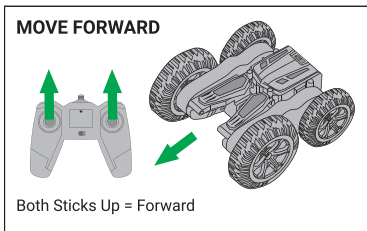
1. Make sure that both the remote controller and the RC car are turned OFF.
2. Remove battery cover with a Phillips screwdriver.
3. Install battery with correct polarity as shown in Picture 1.
4. Replace battery cover and tighten the screw.



HOW TO PLAY

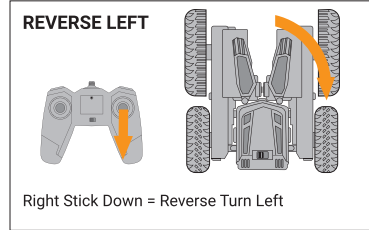
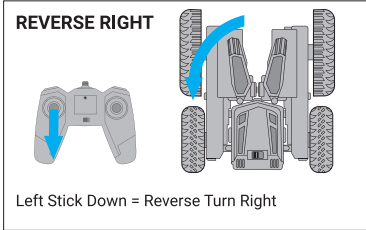
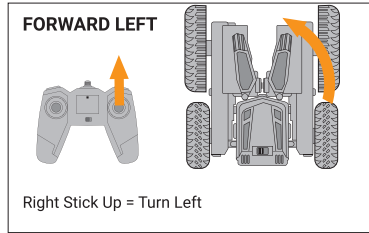
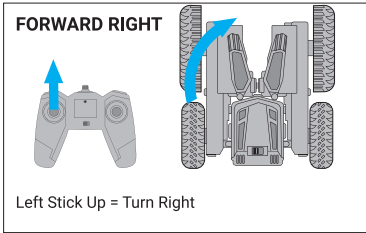
1. Switch ON both the remote controller and the RC car.
2. The RC car and the remote controller will automatically pair.
3. When your RC car starts to slow down, charge it using the included USB charging cable.

BASIC OPERATION CONTROLS



INSTRUCTION MANUAL

BASIC OPERATION CONTROLS



BATTERY SAFETY INSTRUCTIONS

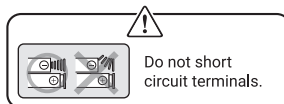
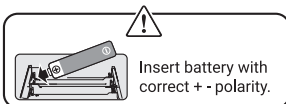
1. Do not short circuit terminals.
2. Do not recharge non-rechargeable batteries.
3. Do not recharge rechargeable batteries without adult supervision.
4. Do not mix different types of batteries. Do not mix old and new batteries.
5. Dispose old and used batteries properly. Do not put batteries on fire as they may explode.
6. Regularly check the USB charging cable for damages. If any damage is found, discontinue use until completely repaired.
7. Remove exhausted batteries from the toy.
8. Remove battery from the toy before charging.
9. Do not overcharge batteries. Charging time is 3-4 hours.

CARE AND MAINTENANCE

1. Always remove batteries from the RC car and the remote controller when not in use.
2. To clean, wipe the toy gently with a clean, damp cloth.
3. Keep your RC toy away from direct sunlight and direct heat.

ADDITIONAL GUIDELINES

1. When your RC car is running low on battery power, it may not be able to perform flips.
2. Your RC car cannot perform flips on smooth surfaces.
3. Make sure that the RC car battery is fully charged before playing.



GUARANTEE - If your product does not perform properly, please contact us at support@force1rc.com for fast service.

WARNING:
CHOKING HAZARD—Small parts.
Not for children under 3 years.