



1

ABOUT OUR PRODUCTS

A WORLD EXCLUSIVE

Blush to Bold pigment line is the world's first pigment series specifically designed to create and enhance a sublime contrast of light and dark, using our exclusive unique colour concept and our innovative layering technique. Introducing 6 unique colour sets providing a light and dark variation of each colour.

BLUSH - LIGHTER VARIATION.
BOLD - DARKER VARIATION .

- BOLD IS A SHADE DARKER THAN BLUSH TO DRAMATISE AND ENHANCE.
- EASILY LAYER BOLD ON TOP OF BLUSH TO AREAS YOU WANT TO MAKE POP!
- OUR COLOUR SETS ARE ALL PERFECTLY PRE-MODIFIED FOR EASE AND PRE-DILUTED FOR A SIGNATURE SOFT FINISH, TO GIVE YOU THE ULTIMATE OMBRE BROW EVERY TIME.

*CAN ALSO BE USED FOR HAIRSTROKES, COMBINATION BROW AND MICROBLADING.

12 PIGMENTS | 6 SETS | EACH SET HAS TWO SHADES OF LIGHT & DARK | SAME TONE

BLUSH AND BOLD
 WARM BLONDE | COOL BLONDE | WARM MID-BROWN | NEUTRAL MID-BROWN | MID-DARK BROWN | DARKEST BROWN

2

HOW TO
USE

HOW TO USE:

Up your brow game in 2 easy steps with Blush to Bold

Use the Blush pigment variation in your initial passes to create your base, and then layer your last pass with the darker Bold variety, applying it to the areas where you want to create targeted definition and contrast. Seamlessly blend the Bold over the Blush from the mid of the brow to the tail for a flawless result.

TIP FOR ULTIMATE CONTRAST:

we recommend layering bold 2-3 times for the ultimate pop of contrast OR 1-2 times for a softer contrast.

*Make sure you don't oversaturate using BLUSH as the skin won't have enough room when layering the BOLD over the top.

To darken any Blush

Use 1-3 drops of the same colour Bold

To darken any bold

Use 1-3 drops of the Darkest Brown Bold



**TWO SHADES
SAME TONE**

3

ADDITIONAL
FAQSecond touch up

Use the same colour bold to touch up the whole brow in the second session, even when going over areas that blush was used, this will give it that final richness and pop to the brow.

*Only use blush in the second session if pigment hasn't retained in the areas like the fronts for example.

Maintenance Colour boost

Blush and Bold can be used as desired

Colour Correction

Use Any modifier from LI Pigments when working alongside Blush to Bold when correcting, for example you can use ungrey to correct any dark grey /blue brow or olive mod to correct red/salmon. brow

Additional modifier

ungrey, (orange)

Although Blush to Bold pigments are perfectly pre modified, If additional warmth is required, you can mix an additional drop once the client is back for their touch up, as you can see the healed results. You must be cautious when using a orange modifier,

**The formula is a hybrid, predominantly iron oxide with organics added for the perfect balance, with a retention rate between 70-80%*

4



5

WARM BLONDE	
BLUSH L-D 2	BOLD L-D 3
<p>BASE WARM YELLOW & GREEN <i>ORGANIC & INORGANIC</i></p> <p>FITZ 1 - 3</p> <p>TEMP SLIGHTLY WARM</p> <p>A GOLDEN LIGHT TO MEDIUM BLONDE</p> <p>AN EXCELLENT VERSATILE BLONDE THAT IS GREAT FOR NATURAL TO GOLDEN BLONDE HAIR</p> <p><i>* IF APPLIED ON RUDDY UNDERTONE, COLOUR WILL BECOME COOLER WITH TEMPERATURE RESULTING INTO NEUTRAL/SLIGHT COOL RESULT</i></p>	

6

WARM BLONDE BLUSH

A GOLDEN LIGHT BLONDE

An excellent versatile blonde that is great for natural to golden blonde hair

Temp: Slightly Warm

Light to Dark Value: 2

Base: Warm yellow & green

Fitz: 1-3

WARM BLONDE BLUSH - The lighter shade of the set:

Use first in your initial passes when shading your brow until desired saturation is met, leave some space in the skin to apply BOLD

*Use in conjunction with WARM BLONDE BOLD for that ultimate light to dark contrast or on its own.

Use:



7

WARM BLONDE BOLD

A GOLDEN MEDIUM BLONDE

An excellent versatile blonde that is great for natural to golden blonde hair

Temp: Slightly Warm

Light to Dark Value: 3

Base: Warm yellow & green

Fitz: 1-3

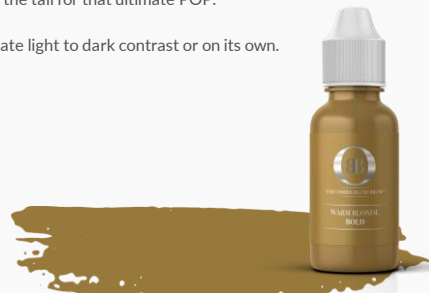
WARM BLONDE BOLD - The darker shade of the set:

Adding contrast:

Add bold in your final passes layering 2-4 times depending on desired contrast, applying to areas to create contrast and density.

We suggest, layering bold midway of the brow down to the tail for that ultimate POP.

*Use in conjunction with WARM BLONDE BLUSH for that ultimate light to dark contrast or on its own.



8



CREATE A SUBLIME CONTRAST OF LIGHT AND DARK USING
BLUSH AND BOLD TO DRAMATISE AND ENHANCE YOUR OMBRE

BLUSH IT. LAYER IT. BOLD IT.

TWO SHADES | SAME TONE

9

COOL BLONDE	
BLUSH L-D 2	BOLD L-D 3
<p>BASE COOL YELLOW & GREEN <i>ORGANIC & INORGANIC</i></p> <p>FITZ 1 - 3</p> <p>TEMP COOL</p> <p>AN ASHY LIGHT TO MEDIUM BLONDE</p> <p>AN EXCELLENT CHOICE FOR WHITE, BLONDE OR SALT AND PEPPER HAIR</p> <p><i>* IF APPLIED ON RUDDY UNDERTONE, COLOUR WILL BECOME COOLER WITH TEMPERATURE RESULTING INTO VERY COOL RESULT</i></p>	

10

COOL BLONDE **BLUSH**

ANASHY LIGHT BLONDE

An excellent choice for white, blonde or salt and pepper hair.

Temp: Cool

Light to Dark Value: 2

Base: Cool yellow & green

Fitz: 1-3

COOL BLONDE BLUSH - The lighter shade of the set:

Use first in your initial passes when shading your brow until desired saturation is met, leave some space in the skin to apply **BOLD**

*Use in conjunction with **COOL BLONDE BOLD** for that ultimate light to dark contrast or on its own.



11

COOL BLONDE **BOLD**

ANASHY MEDIUM BLONDE

An excellent choice for white, blonde or salt and pepper hair.

Temp: Cool

Light to Dark Value: 3

Base: Cool yellow & green

Fitz: 1-3

COOL BLONDE BOLD - The darker shade of the set:

Adding contrast

Add bold in your final passes layering 2-4 times depending on desired contrast, applying to areas to create contrast and density.

We suggest, layering bold midway of the brow down to the tail for that ultimate POP.

*Use in conjunction with **COOL BLONDE BLUSH** for that ultimate light to dark contrast or on its own.



12



CREATE A SUBLIME CONTRAST OF LIGHT AND DARK USING
BLUSH AND BOLD TO DRAMATISE AND ENHANCE YOUR OMBRE

BLUSH IT. LAYER IT. BOLD IT.

TWO SHADES | SAME TONE

13

WARM MID-BROWN

BLUSH

L-D 3

BOLD

L-D 4

BASE

WARM YELLOW AND RED WITH
SMALL AMOUNT OF GREEN

ORGANIC & INORGANIC

FITZ 1 - 4

TEMP
WARM

A GOLDEN LIGHT TO MEDIUM BROWN

**A SUPERB ALL-ROUND COLOUR CHOICE FOR AUBURN
OR LIGHT TO MEDIUM BROWN HAIR**

** WARMTH IS DEPENDENT ON SKIN UNDERTONE.
* A PERFECT COLOUR CHOICE FOR CLIENTS WHO DESIRE
NOT TOO LIGHT NOR DARK*

14

WARM MID BROWN **BLUSH**

A GOLDEN LIGHT BROWN

A super all -round colour choice for auburn or golden light to medium brown hair

Temp: Warm

Light to Dark Value: 3

Base: Warm yellow & red with small Amount of green

Fitz: 1-4

WARM MID BROWN BLUSH - The lighter shade of the set:

Use first in your initial passes when shading your brow until desired saturation is met, leave some space in the skin to apply BOLD

*Use in conjunction with WARM MID BROWN BOLD for that ultimate light to dark contrast or on its own.



15

WARM MID BROWN **BOLD**

A GOLDEN MEDIUM BROWN

A super all -round colour choice for auburn or golden light to medium brown hair

Temp: Warm

Light to Dark Value: 4

Base: Warm yellow & red with small Amount of green

Fitz: 1-4

WARM MID BROWN BOLD - The darker shade of the set:

Adding contrast

Add bold in your final passes layering 2-4 times depending on desired contrast, applying to areas to create contrast and density.

We suggest, layering bold midway of the brow down to the tail for that ultimate POP.

Use in conjunction with WARM MID BROWN BLUSH for that ultimate light to dark contrast or on its own.



16



CREATE A SUBLIME CONTRAST OF LIGHT AND DARK USING
BLUSH AND BOLD TO DRAMATISE AND ENHANCE YOUR OMBRE

BLUSH IT. LAYER IT. BOLD IT.

TWO SHADES | SAME TONE

17

NEUTRAL MID-BROWN	
<p>BLUSH L-D 3</p>	<p>BOLD L-D 4</p>
<p>BASE BROWN WITH NEUTRAL YELLOW AND GREEN <i>INORGANIC</i> FITZ 1 - 4 TEMP NEUTRAL</p> <p>A NEUTRAL LIGHT TO MEDIUM BROWN</p> <p>A SUPERB VERSATILE COLOUR CHOICE FOR LIGHT TO MEDIUM BROWN HAIR</p> <p><i>* A PERFECT COLOUR CHOICE FOR CLIENTS WHO DESIRE NOT TOO LIGHT NOR DARK</i></p>	

18

NEUTRAL MID BROWN **BLUSH**

A NEUTRAL LIGHT BROWN

A super versatile colour choice for light to medium brown hair.

Temp: Neutral

Light to Dark Value: 3

Base: Brown with neutral yellow & green

Fitz: 1-4

NEUTRAL MID BROWN BLUSH - The lighter shade of the set:

Use first in your initial passes when shading your brow until desired saturation is met, leave some space in the skin to apply **BOLD**

Use in conjunction with NEUTRAL MID BROWN **BOLD** for that ultimate light to dark contrast or on its own.



19

NEUTRAL MID BROWN **BOLD**

A NEUTRAL MEDIUM BROWN

A super versatile colour choice for light to medium brown hair.

Temp: Neutral

Light to Dark Value: 4

Base: Brown with neutral yellow & green

Fitz: 1-4

NEUTRAL MID BROWN BOLD - The darker shade of the set:

Adding contrast

Add bold in your final passes layering 2-4 times depending on desired contrast, applying to areas to create contrast and density.

We suggest, layering bold midway of the brow down to the tail for that ultimate POP.

*Use in conjunction with NEUTRAL MID BROWN **BLUSH** for that ultimate light to dark contrast or on its own.



20



CREATE A SUBLIME CONTRAST OF LIGHT AND DARK USING
BLUSH AND BOLD TO DRAMATISE AND ENHANCE YOUR OMBRE

BLUSH IT. LAYER IT. BOLD IT.

TWO SHADES | SAME TONE

21

MID-DARK BROWN

BLUSH

L-D 4

BOLD

L-D 5

BASE

NEUTRAL YELLOW AND BROWN

INORGANIC

FITZ 2 - 6

TEMP

SLIGHTLY COOL

A CLASSIC MEDIUM TO DARK BROWN

A PERFECT GO TO SHADE THAT IS GREAT FOR
MEDIUM TO DARK BROWN HAIR

** OUR OBB FAV*

22

MID - DARK BROWN BLUSH

A CLASSIC MEDIUM BROWN

A perfect go to shade that is great for medium to dark brown hair

Temp: Slightly cool

Light to Dark Value: 4

Base: Neutral yellow & brown

Fitz: 2-6

*Pre- modified

MID TO DARK BROWN BLUSH - The lighter shade of the set:

Use first in your initial passes when shading your brow until desired saturation is met, leave some space in the skin to apply BOLD

please note this pigment has already been pre- modified, If additional warmth is needed, you can add an extra drop on the touch-up after seeing the healed result, using ungrey from Li Pigments.

*Use in conjunction with MID TO DARK BROWN BOLD for that ultimate light to dark contrast or on its own.



23

MID - DARK BROWN BOLD

A CLASSIC MEDIUM TO DARK BROWN SHADE

A perfect go to shade that is great for medium to dark brown hair

Temp: Slightly cool

Light to Dark Value: 5

Base: Neutral yellow & brown

Fitz: 2-6

*Pre- modified

MID TO DARK BROWN BOLD - The darker shade of the set:

Adding contrast

Add bold in your final passes layering 2-4 times depending on desired contrast, applying to areas to create contrast and density.

We suggest, layering bold midway of the brow down to the tail for that ultimate POP.

please note this pigment has already been pre- modified, If additional warmth is needed, you can add an extra drop on the touch-up after seeing the healed result, using ungrey from Li Pigments.

*Use in conjunction with MID TO DARK BROWN BLUSH for that ultimate light to dark contrast or on its own.

Adding contrast:



24



CREATE A SUBLIME CONTRAST OF LIGHT AND DARK USING
BLUSH AND BOLD TO DRAMATISE AND ENHANCE YOUR OMBRE
BLUSH IT. LAYER IT. BOLD IT.
TWO SHADES | SAME TONE

25

DARKEST BROWN

BLUSH
L-D 5

BOLD
L-D 6

BASE
BLACK YELLOW AND RED
INORGANIC

FITZ 2 - 6
TEMP
COOL

A DARKEST BROWN-BLACK

**AN INTENSE DARK BROWN THAT IS GREAT FOR
DARK BROWN TO BLACK HAIR**

** TO DARKEN ANY BOLD USE 1 - 3 DROPS
OF THE DARKEST BROWN BOLD*

26

DARKEST BROWN BLUSH

A RICH DARK BROWN

An intense dark brown that is great for dark brown to black hair

Temp: Slightly cool

Light to Dark Value: 5

Base: cool yellow with small amount of red in the base.

Fitz: 2-6

*Pre- modified

DARKEST BROWN BLUSH - The lighter shade of the set:

Use first in your initial passes when shading your brow until desired saturation is met, leave some space in the skin to apply BOLD

please note this pigment has already been pre- modified, If additional warmth is needed, you can add an extra drop on the touch-up after seeing the healed result, using ungrey from Li Pigments.

Use in conjunction with DARKEST BROWN BOLD for that ultimate light to dark contrast or on its own.



27

DARKEST BROWN BOLD

A DARK BROWN BLACK

An intense dark brown black that is great for dark brown to black hair

Temp: Slightly cool

Light to Dark Value: 6

Base: Black, cool yellow with small amount of red in the base.

Fitz: 2-6

*Pre- modified

DARKEST BROWN BOLD - The darker shade of the set:

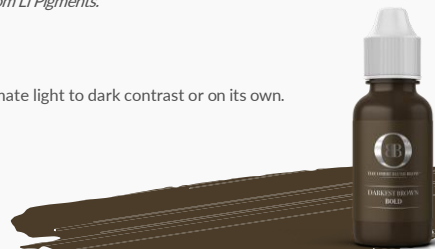
Adding contrast

Add bold in your final passes layering 2-4 times depending on desired contrast, applying to areas to create contrast and density.

We suggest, layering bold midway of the brow down to the tail for that ultimate POP.

please note this pigment has already been pre- modified, If additional warmth is needed, you can add an extra drop on the touch-up after seeing the healed result, using ungrey from Li Pigments.

Use in conjunction with DARKEST BROWN BLUSH for that ultimate light to dark contrast or on its own.



28

THE OMBRE BLUSH BROW™

BLUSH TO BOLD®
PIGMENT SERIES

DARKEST BROWN BLUSH

BLUSH
L-D 5

DARKEST BROWN BOLD

BOLD
L-D 6

BLUSH IT. LAYER IT. BOLD IT.
TWO SHADES | SAME TONE

29