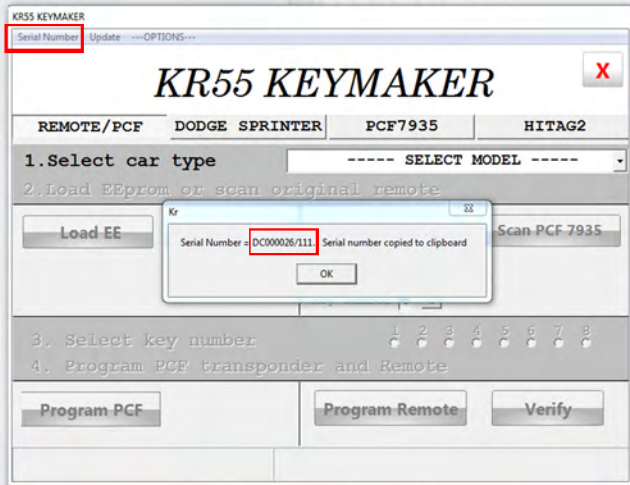


# WSP KEYMAKER

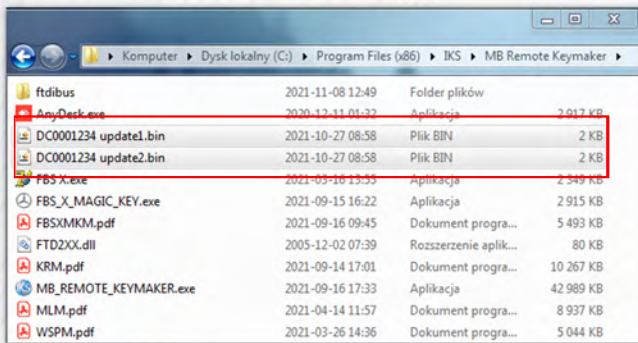
## HOW TO BUY AND UPDATE A LICENSE



1. START THE KR55 KEYMAKER SOFTWARE AND CLICK THE "SERIAL NUMBER" BUTTON. THE SERIAL NUMBER OF YOUR DEVICE WILL APPEAR IN A NEW WINDOW.

2. SEND THE SERIAL NUMBER TO THE E-MAIL ADDRESS:

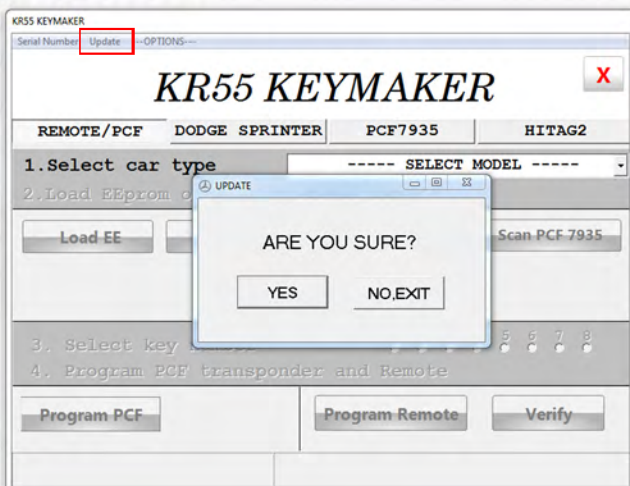
[SPECIALORDERS@IKS.US](mailto:SPECIALORDERS@IKS.US)



3. AFTER A FEW HOURS, YOU WILL RECEIVE A REPLY MESSAGE CONTAINING TWO LICENSE FILES. SAVE BOTH FILES IN THE SAME FOLDER AS THE KR55 KEYMAKER SOFTWARE.

THE DEFAULT IS:

`C://PROGRAM FILES (X86)/IKS/MB RMOETE KEYMAKER/`



4. NOW START THE KR55 KEYMAKER SOFTWARE AND PRESS THE "UPDATE" BUTTON. IN THE NEW WINDOW, PRESS "YES".

THE DEVICE WILL BE UPDATED AFTER A FEW SECONDS. NOW RECONNECT THE DEVICE AND RESTART THE WSP KEYMAKER SOFTWARE.

NOW THE WSP KEYMAKER SHOULD START ACTIVATED.

