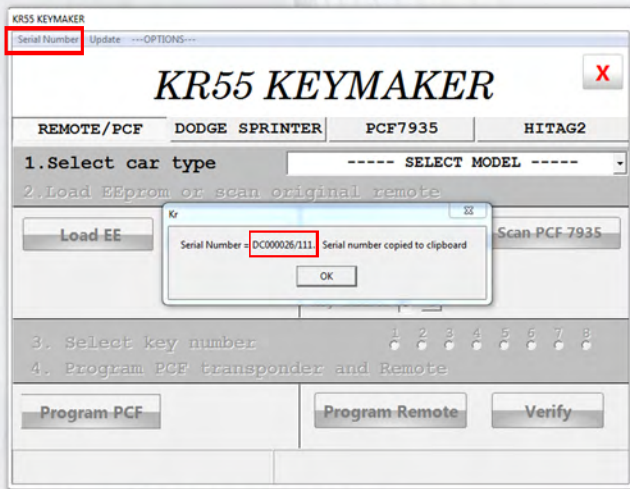


SCAN PCF 7935

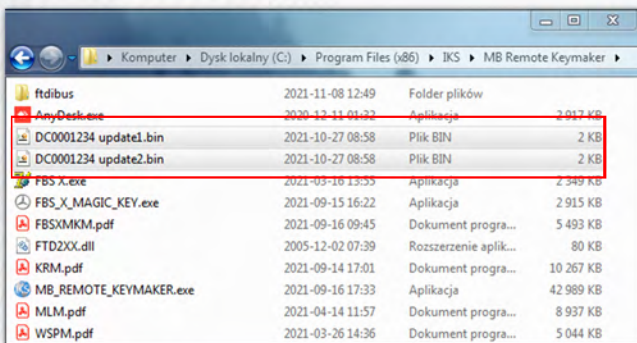
HOW TO BUY AND UPDATE A LICENSE



1. START THE KR55 KEYMAKER SOFTWARE AND CLICK THE "SERIAL NUMBER" BUTTON. THE SERIAL NUMBER OF YOUR DEVICE WILL APPEAR IN A NEW WINDOW.

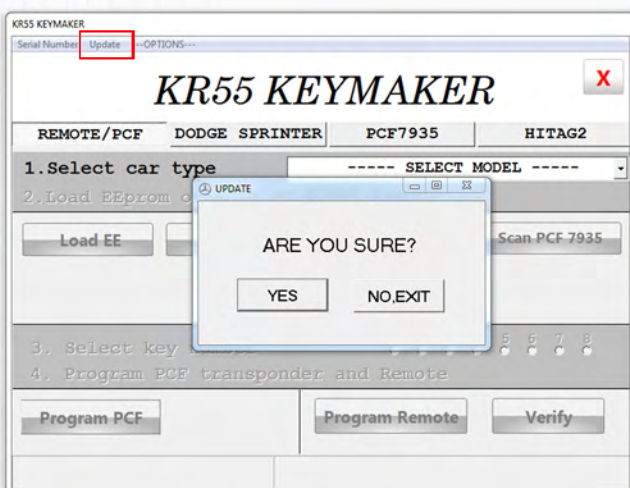
2. SEND THE SERIAL NUMBER TO THE E-MAIL ADDRESS:

SPECIALORDERS@IKS.US



3. AFTER A FEW HOURS, YOU WILL RECEIVE A REPLY MESSAGE CONTAINING TWO LICENSE FILES. SAVE BOTH FILES IN THE SAME FOLDER AS THE KR55 KEYMAKER SOFTWARE. THE DEFAULT IS:

C://PROGRAM FILES (X86)/IKS/MB RMOETE KEYMAKER/



4. NOW START THE KR55 KEYMAKER SOFTWARE AND PRESS THE "UPDATE" BUTTON. IN THE NEW WINDOW, PRESS "YES". THE DEVICE WILL BE OUT-DATED AFTER A FEW SECONDS. NOW RECONNECT THE DEVICE AND RESTART KR55 KEYMAKER SOFTWARE.