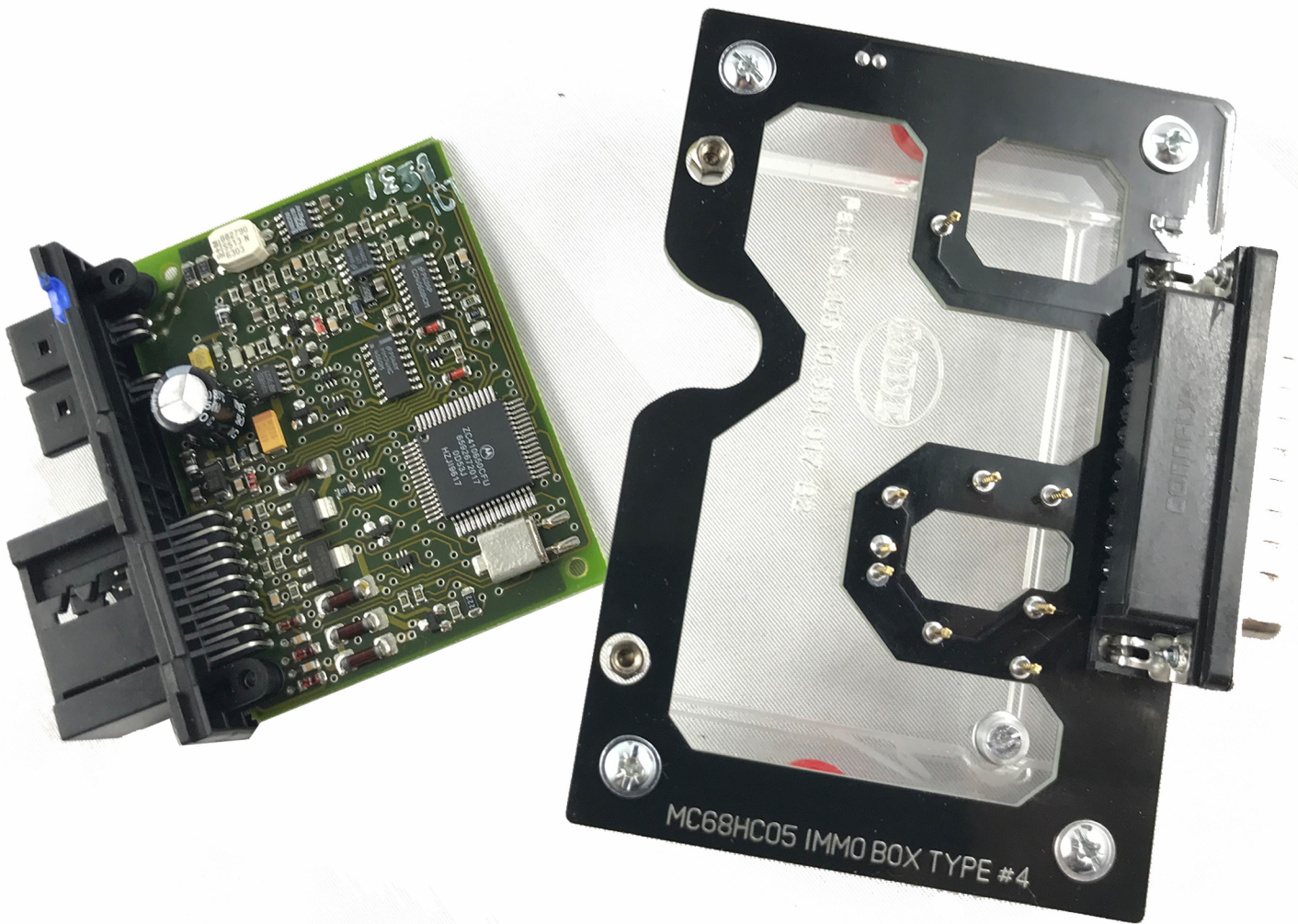


SKREEM Click'n go

SKREEM Click'n go Adapters works  
**ONLY** with CARPROG device  
**(device sold separately).**



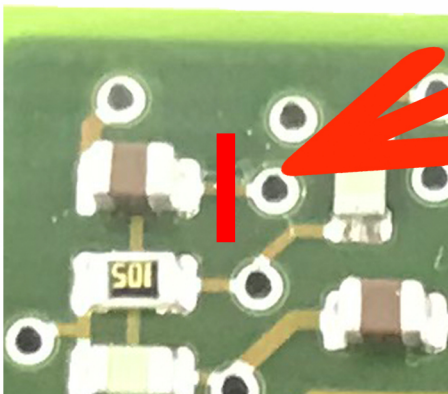
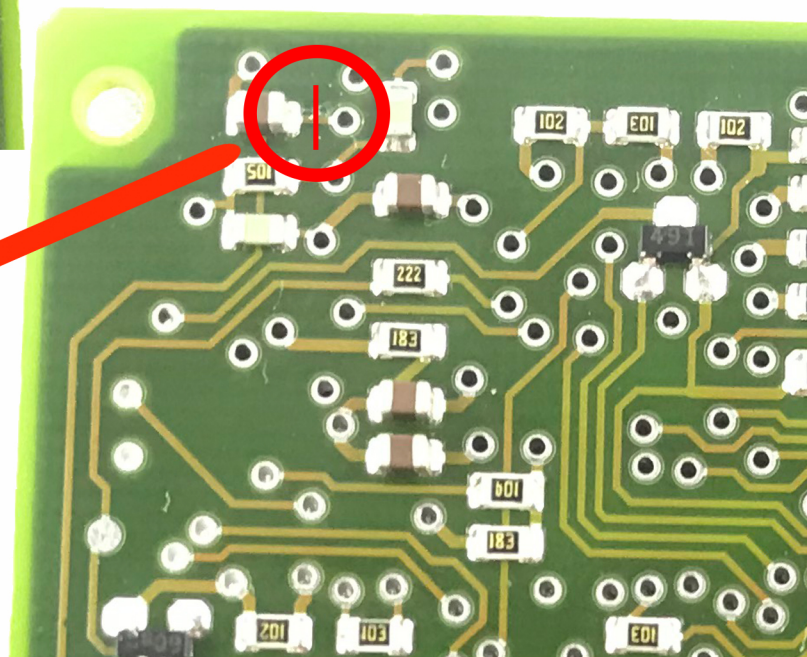
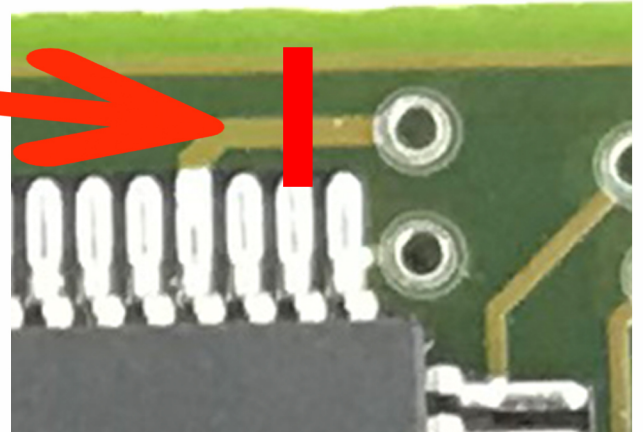
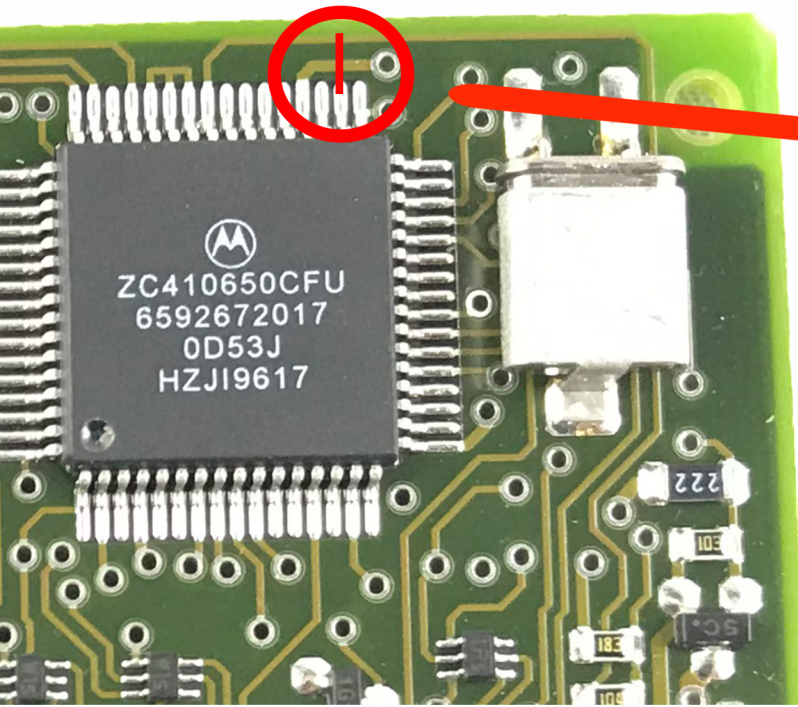
## **MC68HC05 IMMO BOX TYPE 4**

**Working with 1 button IR remotes -  
W202, W210, R129/W129, W140, W461**



## MC68HC05 IMMO BOX TYPE 4

Break paths on the PCB in the position shown.  
The path must be broken EXACTLY at this point.



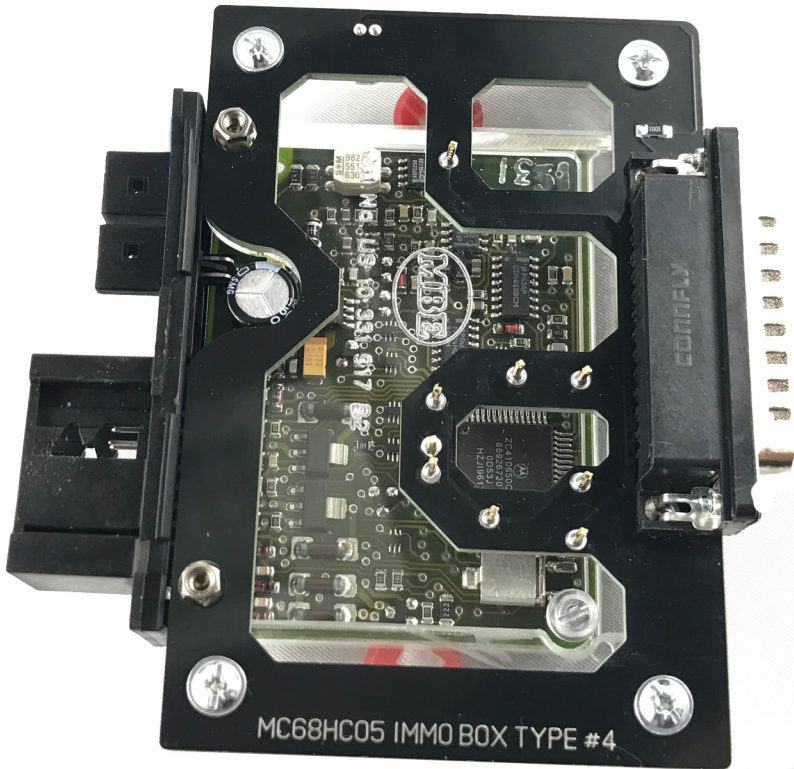
Remember to reconnect the paths after reading  
the module!



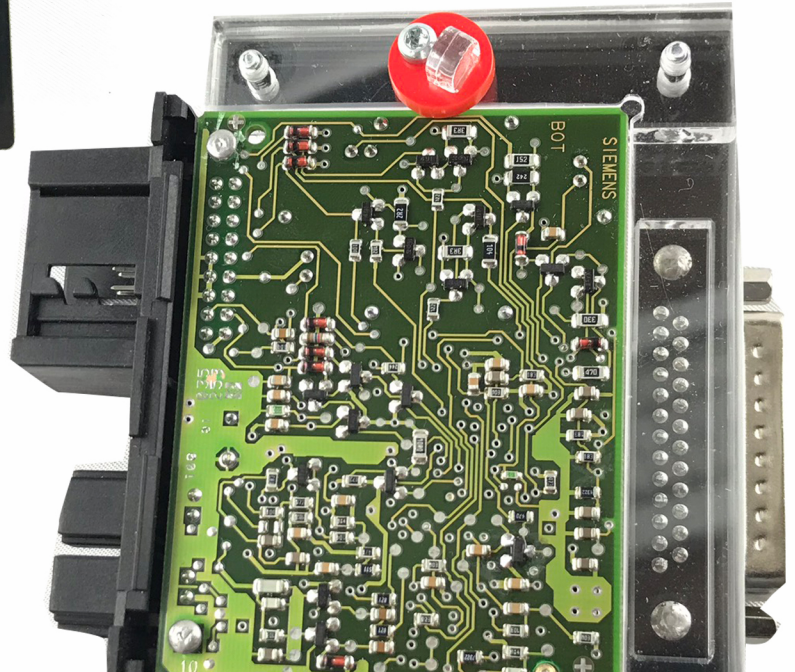
# SKREEM Click'n go

## MC68HC05 IMMO BOX TYPE 4

Mount SKREEM board on the Click'n Go adapter.

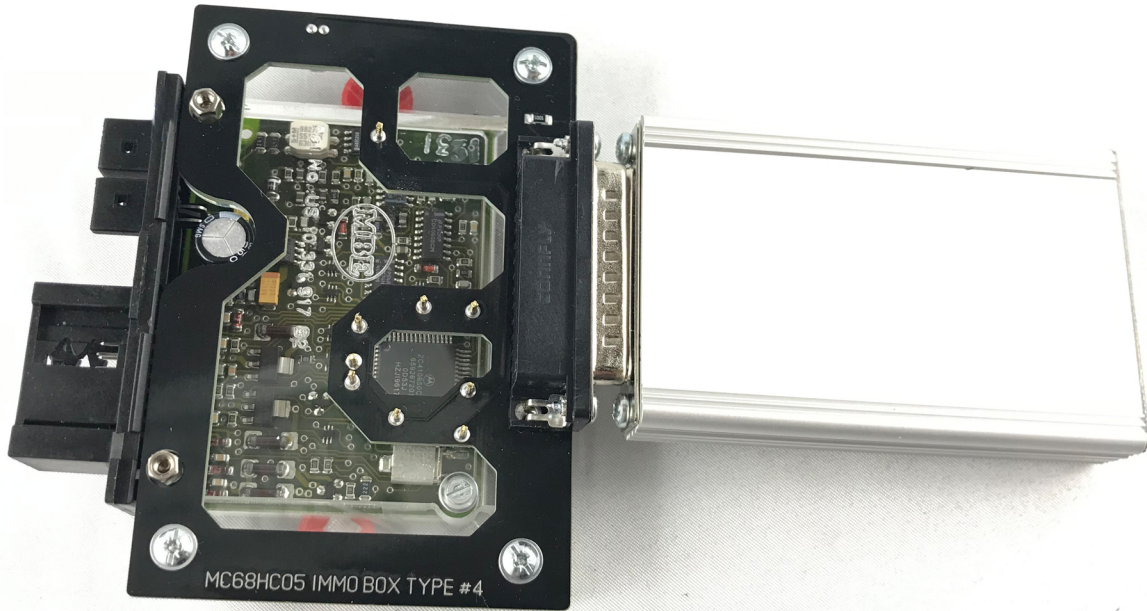


Push down the SKREEM board on to the Click'n Go adapter. Make sure it's mounted correctly.



Secure SKREEM by turning the Click'n Go safety locks over the board.

## MC68HC05 IMMO BOX TYPE 4



Connect the Click'n go adapter to Carprog device.

Connect Carprog device to computer and run the CarProg software.

From the list on the left choose **MCU - MOTOROLA - HC05 v0.9**

CARPROG v12.86

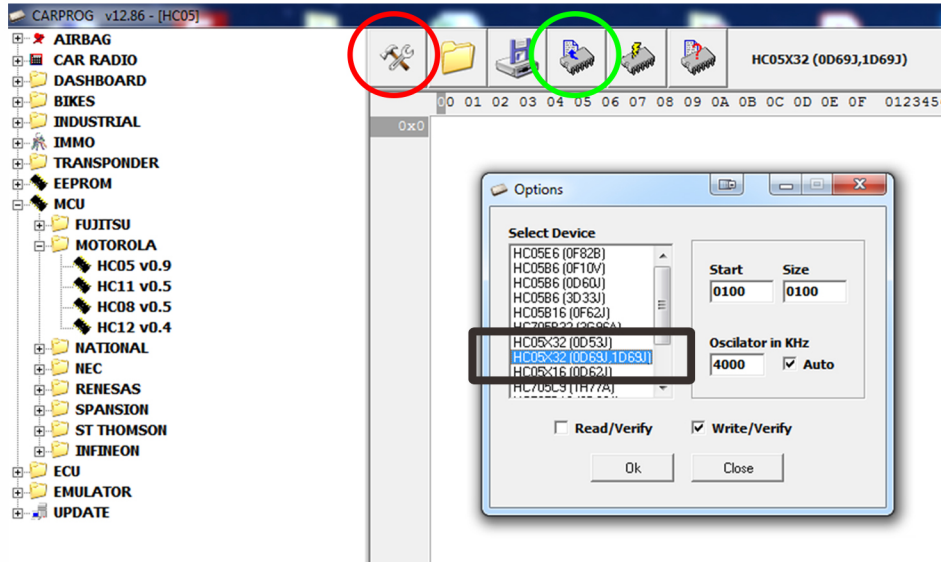
- ✖ AIRBAG
- 📁 CAR RADIO
- 📁 DASHBOARD
- 📁 BIKES
- 📁 INDUSTRIAL
- 🔧 IMMO
- 📁 TRANSPONDER
- 🔧 EEPROM
- 🔧 MCU
  - 📁 FUJITSU
  - 📁 MOTOROLA
    - 🔧 **HC05 v0.9**
    - 🔧 HC11 v0.5
    - 🔧 HC08 v0.5
    - 🔧 HC12 v0.4
- 📁 NATIONAL
- 📁 NEC
- 📁 RENESAS
- 📁 SPANSION
- 📁 ST THOMSON
- 📁 INFINEON
- 📁 ECU
- 📁 EMULATOR
- 🔧 UPDATE



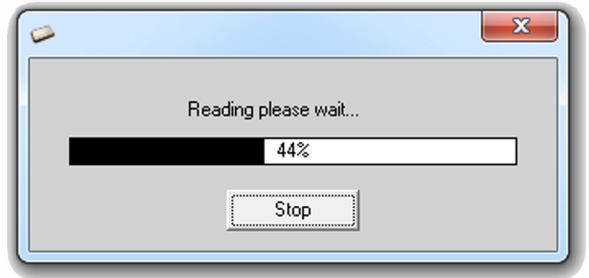
# SKREEM Click'n go

## MC68HC05 IMMO BOX TYPE 4

Click the **icon**.  
In new window choose  
**HC05X32 (0D69J,1D69J)**  
and click "Ok".



Click the **icon**.  
Reading process will start.



After reading the module,  
click the **icon** to save the file  
to your computer.

