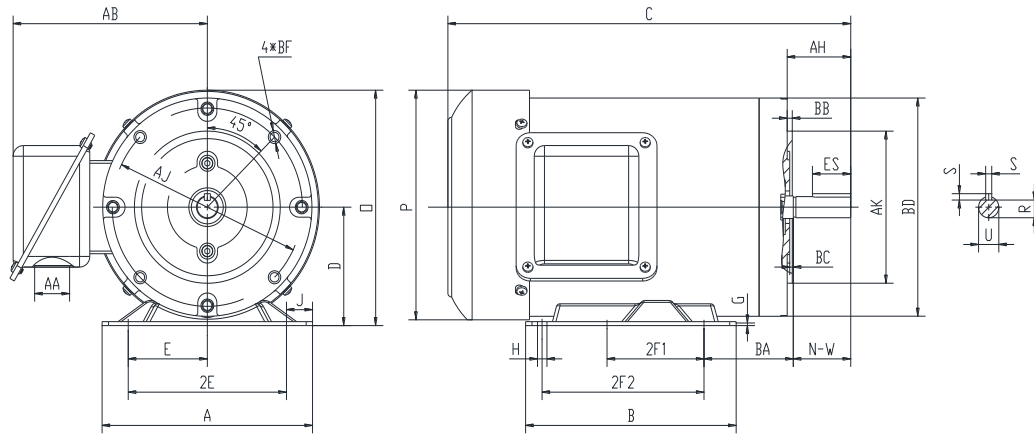




## PR56C2M2A

**GENERAL PURPOSE ELECTRIC MOTOR**  
**NEMA PREMIUM EFFICIENCY**  
**ROLLED STEEL CONSTRUCTION**  
**TOTALLY ENCLOSED FAN COOLED**  
**INVERTER RATED (10:1 VT; 5:1 CT)**



### DIMENSIONS

HP	RPM	Frame	MOUNTING														
			A	B	C	D	G	H	J	E	2E	2F1	2F2	O	P	T	BA
2	3600	56C	6.3	4	12.5	3.5	0.12	0.34	0.71	2.44	4.88	3	NA	7	6.8	NA	2.75

FLANGE							Shaft Extension, Key Set						
AH	AJ	AK	BB	BC	BD	BF	U	V	R	S	ES	N-W	
2.06	5.875	4.5	0.16	0.19	6.46	4*3/8-16	0.625	NA	0.517	0.188	1.41	1.88	

Conduit Box		Bearings		Mount
AA	AB	DE	ODE	
1.1	6	6203-2RZC3	6203-2RZC3	F1

**BEARING LUBRICATION:** The bearings come lubricated with Mobil Polyrex EM Polyurea Grease.





## PR56C2M2A



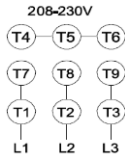
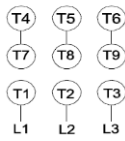


**GENERAL PURPOSE ELECTRIC MOTOR**  
**NEMA PREMIUM EFFICIENCY**  
**ROLLED STEEL CONSTRUCTION**  
**TOTALLY ENCLOSED FAN COOLED**  
**INVERTER RATED (10:1 VT; 5:1 CT)**

### PERFORMANCE DATA

HP	RPM	Frame	Voltage	Frequency (Hz)	Full Load S.F.	Insulation Class	NEMA Design	Slip (%)	NEMA Code	Enclosure Type	IP Rating	Max. Ambient
2	3500	56C	208-230/460	60	1.15	F	B	2.8	M	TEFC	55	40 °C

Amps (460V)		Efficiency (%)			Power Factor			Torque (ft-lb)			DE Bearing	ODE Bearing	Connection	Weight (lbs.)
FLA	LRA	100%	75%	50%	100%	75%	50%	FLT	LRT %	BDT %				
2.53	21.2	85.5	86.2	84.0	0.87	0.82	0.74	3.03	388	419	6203-2RZC3	6203-2RZC3	9 Lead 2Y/Y	33

### NAME PLATE

		THREE PHASE AC INDUCTION MOTOR							
CAT NO:	PR56C2M2A	FRAME	56C	PH	3	208-230V 			
HZ	60	S.F.	1.15	ENCL	TEFC			IP	55
HP	2	RPM	3500	DUTY	CONT			DES	B
VOLT	208-230/460	AMB	40 °C	INS	F	460V 			
FLA	5.4-5/2.5	DE BRG	6203-2RZC3						
CODE	M	P.F.	0.87	ODE BRG	6203-2RZC3				
EFF	85.5	MIN	82.5	LBS	33				
CONNECTION	9 Lead 2Y/Y	SER NO.							
Hernando, MS <a href="http://www.naemotors.com">www.naemotors.com</a>						<b>CC340B</b>			

### APPLICATIONS:

General purpose use on pumps, fans, blowers, compressors, conveyors, material handling and other industrial machinery installed in damp, dusty or dirty environments.