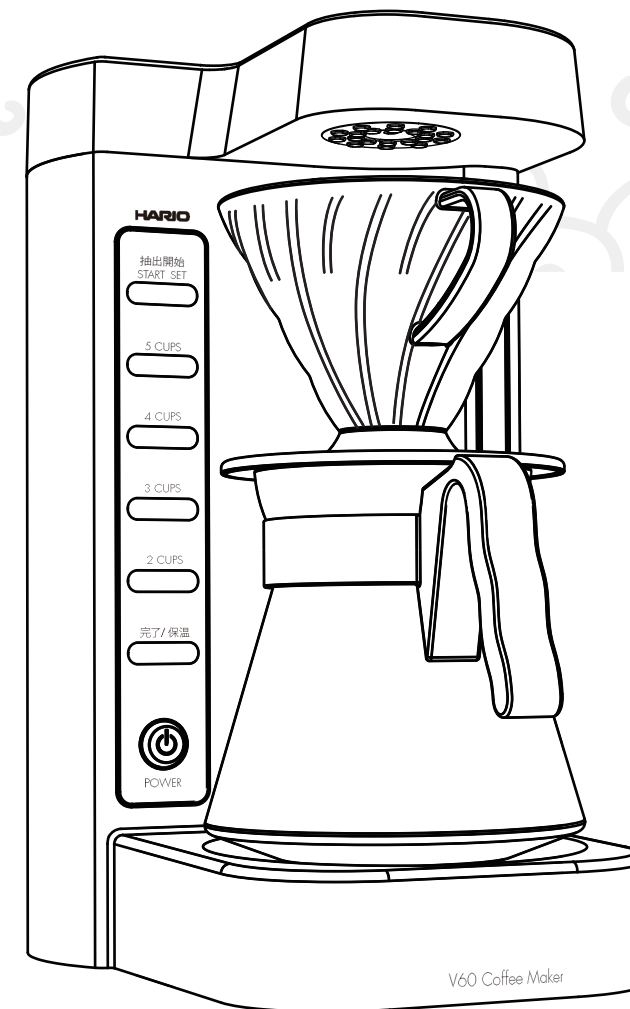


HARIO



For General Household Use
V60 Coffee King 2
Coffee Maker

Instruction Manual

Thank you for purchasing this HARIO product.
Please be sure to read this instruction manual
thoroughly prior to use. After reading the manual,
store it in a safe place for future reference.

1	Before Use
2~4	Safety Precautions
5	Features of V 60
6	Features of Coffee King 2
7	Names of Parts
8	Using This Product for the First Time
9.10	How to use
11	Amount of Coffee Grounds
12	Troubleshooting
13	Server Use and Maintenance
14	Product Care / Product Specifications

Before Use

This product can be used to make **2-5 servings**. Use at least 300mL and no more than 750mL of water. All of the water in the tank will be used, regardless of the serving selection button. Ensure that you add the volume of water that corresponds to the serving selection button that you press.

※This product cannot be used for single servings or servings of less than 300mL.

[Extending the lifespan of your V60 Coffee King 2 Coffee Maker]

Perform cleaning with citric acid.

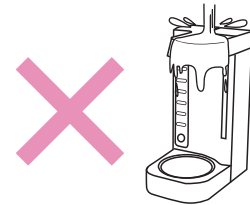
During use, deposits of minerals found in water cause scaling by adhering to internal parts such as hot water pipes and switching valves. This may impede the flow of hot water and reduce brewing speed. Vinegar may also be used for cleaning instead of citric acid. Cleaning should be performed approximately once every three to six months,

or **every two months** if the product is in frequent use.

※ Lime adhering to the inside of pipes may impede the flow of water. This may cause the product to incorrectly detect water in the tank, turn on the brewing complete light or display an error message. In such cases, dissolve more citric acid than usual (about two tablespoons) in water and wash the product at least twice.

Cleaning with citric acid

- ① Fill the server up to the 600mL mark, then add 10g (one table-spoon) of citric acid (or vinegar) and stir well.
- ② Pour the citric acid solution made in step one into the water tank.
- ③ Set the dripper and server in the body. (Do not put a paper filters or ground coffee in the dripper.)
- ④ Turn on the power, press the "4 cups" serving selection button, then press the start button.
- ⑤ When the brewing complete light turns on, pour away the water in the server, then wait at least five minutes. Next, perform cleaning using water only to remove any remaining citric acid odor. (Refer to p. 8)



The main body is not water washable.

Use a damp cloth to wipe off any dirt on the surface of the main body, then remove any moisture by wiping with a dry cloth.

- ⚠ Always turn off the power, unplug the product, then leave to cool before cleaning.
- ⚠ Do not use items such as thinners, benzine, nail polish remover, polishing powder or scrubbing brushes. Doing so may cause deformation, discoloration or damage.

[Caution]

- Always dilute citric acid in water before putting it into the water tank. Do not put citric acid directly into the water tank. Doing so may result in clogging inside the product.
- Do not put anything other than water or citric acid inside the water tank. Doing so may cause the product to malfunction.
- Please be aware that the heat retention plate becomes hot.
- Use citric acid intended for kitchen use.

Safety Precautions

Warning Symbols

This instruction manual contains the following warning symbols which are used to ensure safe use of this product and prevent injury to yourself or other people. These symbols indicate the type of situation that may occur if the product is handled incorrectly. Please read these descriptions thoroughly before reading the instruction manual. Also, please be sure to follow the instructions indicated with these symbols as they are important for your safety.

Symbol	Meaning
Danger	Indicates a situation that will result in death or serious injury.
Warning	Indicates a situation that may result in death or serious injury.
Caution	Indicates a situation that may result in injury or damage to property.
Example + = Electric Shock Caution	The \triangle (triangle) symbol indicates a danger, warning or caution. The symbol inside the triangle provides details of the precaution (example to the left indicates an electric shock caution).
Example + = Disassembly Prohibited	The \circ (circle) symbol indicates a prohibited act. The symbol inside the circle or text near the symbol provides details of the prohibited act (example to the left indicates that disassembly of the product is prohibited).
Example + = Remove the power plug from the wall socket. + = Follow this instruction	The \bullet (black circle) symbol indicates instructions that must be followed. The symbol inside the black circle indicates details of the instruction that must be followed (example to the left indicates the power plug must be removed from the wall socket).

Safety Precautions

Warning

This product must only be used with a 220-240V AC power supply. Failure to do so may result in fire or electric shock.



Do not use this product if the power cable or plug is damaged, or if the plug fits loosely in the socket. Doing so may result in electric shock, short circuit or fire.



Insert the plug fully and securely into the wall socket. Incomplete insertion of the plug may cause electric shocks or heat to be generated, resulting in fire. Do not use the product if the plug is damaged or wall socket is loose.



Do not use this product at an unstable place. Doing so may lead to injury or malfunction.



This appliance shall not be used by children. Keep the appliance and its cord out of reach of children.



When unplugging the plug from the wall socket, be sure to hold the plug. Never hold or pull on the power cable. Pulling the power cable may result in electric shock, short circuits or fire.



Remove the power plug from the wall socket when the product is not in use. Pulling the power cable may result in electric shock, short circuits or fire.



Insert the plug directly into a 10A or higher rated plug socket. Inserting the plug into a multi-adaptor and using with other electrical devices may cause the adaptor to overheat and catch fire.



The kettle may fall or tip over if the power cable gets caught on your feet or other objects. This may result in burns or other injuries. Take care when selecting a location to place this product.



Do not place your hands or face near the steam outlet. Doing so may result in burns. Particular care must be taken to prevent steam from coming into contact with infants.



Periodically remove dust, etc. from the plug. Dust accumulating on the plug may become wet with humidity and cause an insulation failure, resulting in fire. Unplug the plug and clean with a dry cloth. Avoid spillage on the connector.



Do not insert or remove the plug with wet hands. Doing so may cause electric shock.



The product must not be disassembled, repaired or modified unless by a qualified repair technician. Doing so may result in fire or malfunction.



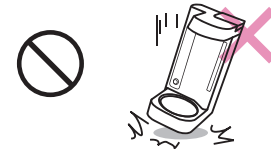
Do not damage the power supply or plug in any case. Do not damage or process the cable, use near a heating appliance, forcibly bend, twist or pull it, place heavy objects on it or bundle it with other cables. Using when damaged may result in electric shock, short circuit or fire.



Do not use this product with the server removed. Doing so may result in burns.



Do not subject the product to strong impact. Doing so may cause damage, malfunctions, or reduce the service life of the product. Stop using this product immediately if you think anything is abnormal.



Do not move the main body with the server mounted. Doing so may result in burns or injury.



Do not touch parts that become hot during use, such as the server and the heat retention plate and surrounding area, during or immediately after use. Doing so may result in burns.



Do not wash, dip or otherwise immerse the body of the grinder in water. Doing so may lead to malfunction or electric shock.



During and after brewing, hot steam may be emitted from the overflow outlet. Do not place your hands or face near the outlet. Doing so may result in burns.

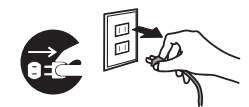


Caution

Do not overfill the product with ground coffee. Inserting 50g or more of ground coffee may cause coffee to overflow, which may result in burns.



Turn off the power and remove the plug from the socket when cleaning the product. Failure to do so may result in injury.



If the main body becomes wet due to the emission of steam, dry by wiping with a dry cloth. (This may occur in areas such as around the water tank inlet or brewing outlet.)



Do not heat the server directly.



Do not use in a location that is exposed to direct sunlight for long periods, where pets walk regularly, or in a location that has high humidity such as a bathroom. Doing so may cause deformation, malfunction, accidents or fire.



The inside of the water tank becomes hot during heating. Do not open the lid or add water. Doing so may result in burns caused by hot steam.



When brewing coffee immediately after use, turn off the power with the switch and wait for at least five minutes before using again. Putting water into the water tank while the main body is hot may cause steam to be emitted and result in burns.



Do not use this product without water in the tank. Heating while empty may cause the product to malfunction or result in an accident.



The glass may break. Handle with care when washing or using. Take appropriate precautions to avoid injury when handling a damaged product.



Do not use this product near walls or furniture. Do not use with items placed on top of the product. Doing so may cause discoloration or deformation as a result of heat or steam. When the product is placed on a shelving unit or similar, take care to ensure that steam is not trapped.



Do not fill with water above the MAX / 5 mark. Overfilling will cause water to be discharged from the overflow outlet on the back of the product.



Check the water level scale

Starting the product with a small amount of water in the tank may cause normal operation to begin and result in hot water spraying from the product.



Do not put anything other than room temperature water or citric acid (including hot water, milk and coffee) inside the water tank. Doing so may cause the product to malfunction. Using mineral water, alkaline ionized water and well water is not recommended. Doing so may result in lime build up inside the product.



When disposing of this product, sort all waste in accordance with any instructions from your local authority.



Features of V60

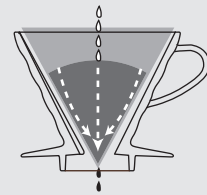
Made to capture the flavor of pour over coffee

Now, more people than ever before can enjoy the delicious taste of V60 pour over coffee at home with ease.

● Features of V60

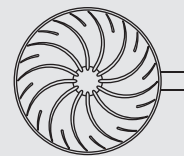
Cone shape

The layer of ground coffee becomes thicker and the hot water flows to the center, extending the time that it is in contact with the coffee grounds and ensuring thorough extraction from the coffee grounds.



Large single hole

There is a large single hole in the bottom of the dripper. The tip of the paper filter protrudes from the large hole, allowing the poured hot water to perform extraction unrestricted by the dripper.



Spiral ribs

The large ribs allow the ground coffee to expand during preinfusion. This prevents the paper filter from sticking to the dripper, allowing air to escape and the ground coffee to bloom correctly.



● Brewing pour over coffee with the V60 Dripper



Level the grounds



Perform preinfusion for 30 seconds



Pour onto the center

1. Put freshly ground coffee beans into the paper filter and shake them gently until level.
2. Pour in enough boiling water to dampen all the ground coffee and leave to preinfuse for about 30 seconds.
3. From the center, pour in boiling water as though drawing a 25 mm circle, making sure to finish the pour within three minutes no matter how many cups you are making.

5

Features of Coffee King 2

Compact body

The body is approximately 25% smaller than the previous model.

21-hole brewing outlet

The brewing outlet features a 21-hole design. With more holes than conventional coffee makers, it provides the ideal hot water pour for brewing coffee.

High temperature brewing system

This system consistently maintains a high temperature of about 93°C from preinfusion to brewing. This is the optimum brewing temperature for pour over coffee and brings out the aroma of the beans.

Simple operation

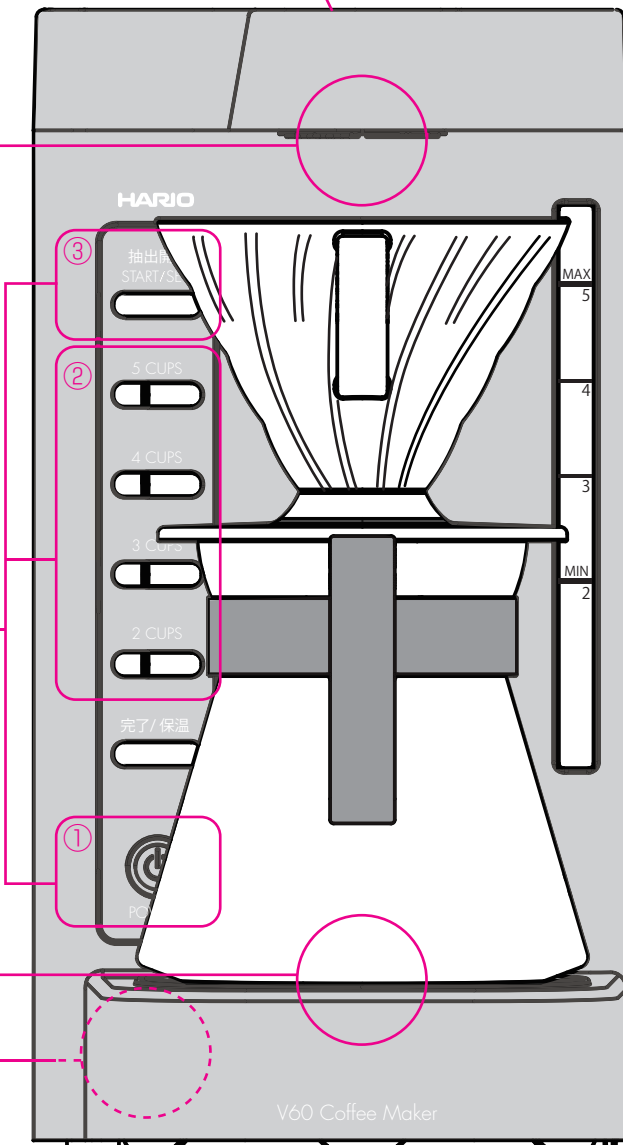
Three easy steps: turn on the power, select a number of servings, then start brewing.

Heat retention function

The heat retention function prevents coffee from becoming cold after brewing. The heater keeps the coffee warm by switching between on and off every 30 minutes.

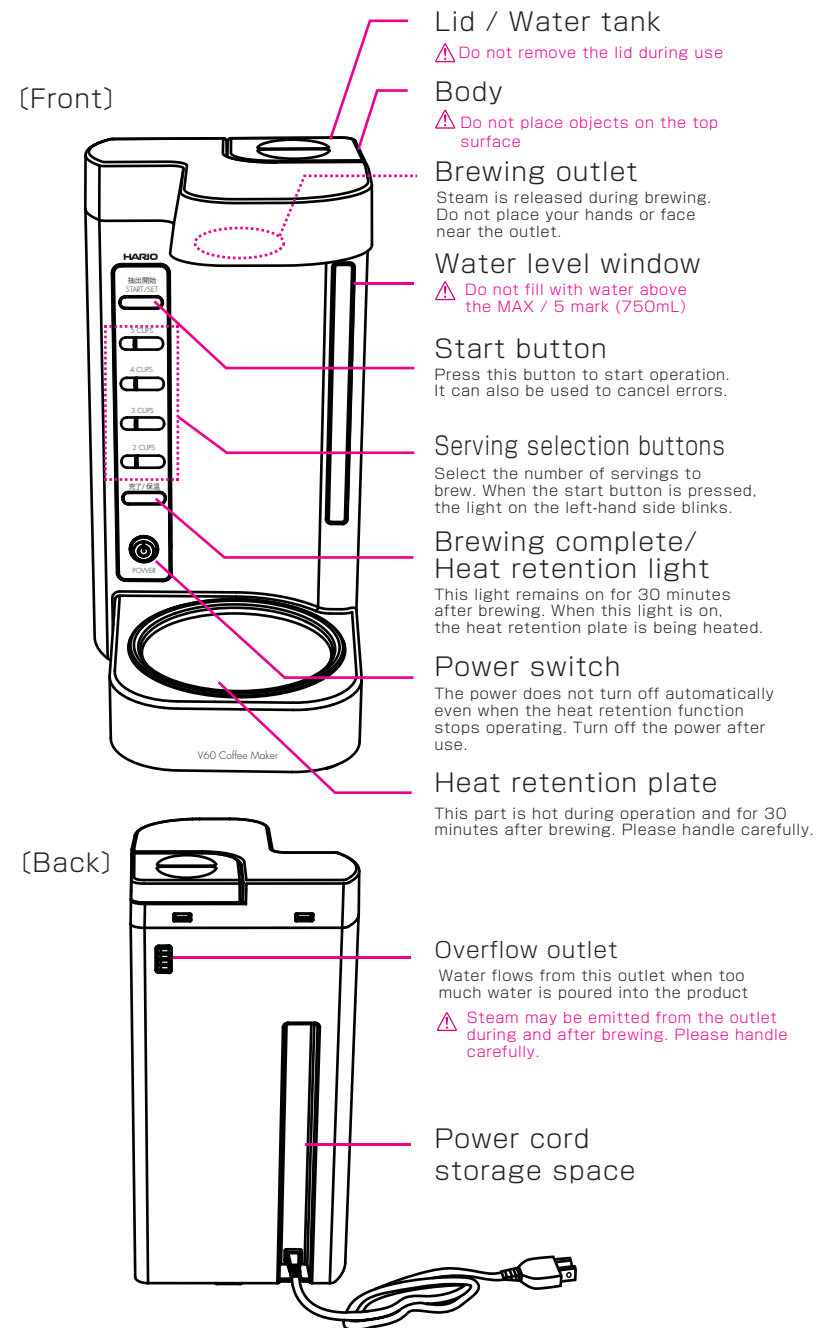
Power cord storage

The power cord storage space at the back of the product enables more compact storage when not in use.



6

Names of parts



*The main body is made from resin and may have a resin-like odor, this is not hazardous to human health.
*Product specifications may be subject to change without notice for the purposes of product improvement.

Included accessories



Paper Filter 02W
(White/40 sheets)



Measuring Spoon
Maximum capacity approx. 8g

Material: Polypropylene



V60 Dripper 02

Material: PCT resin



V60 Coffee Server 700

Material: Body / Heatproof glass
Bushing / Silicone rubber
Lid / Handle / Polypropylene

Using This Product for the First Time

1 The following items can be removed from the main body and should be washed in water.



2 Perform cleaning when using the product for the first time, or if the product has not been used for a prolonged period of time.

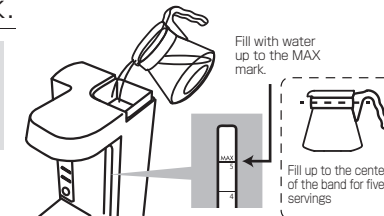
(Cleaning)

1 Pour tap water into the water tank.

Remove the lid, fill with water up to the MAX / 5 mark (750mL) mark, then replace the lid. (When pouring water using the server included with this product, fill up to the center of the band for five servings.)

● Use tap water with this product.

⚠ The maximum capacity is five servings. Do not fill with water above the MAX / 5 mark (750mL). Overfilling will cause water to be discharged from the overflow outlet.



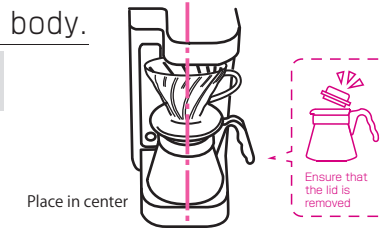
2 Set the server and dripper in the main body.

Set the server and dripper in the main body without a paper filter or ground coffee.

● Position the server and dripper correctly in the center of the heat retention plate.

⚠ Ensure that the server lid is removed.

⚠ If the server and dripper are not in position or are placed off-center, boiling water may spill and result in burns.



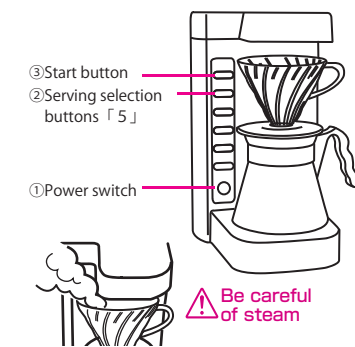
3 Perform set up using the buttons.

- ① Turn on the power with the switch
- ② Press the "5 cups" serving selection button
- ③ Press the start button

After short time, the sound of water boiling can be heard and hot water begins to pour. Initially, a small amount of hot water is released, then the flow stops before starting again approximately 30 seconds later. Three beeps sound when there is no water left in the tank and hot water stops pouring.

⚠ Hot steam is emitted from the brewing outlet. Do not place your hands or face near the brewing outlet.

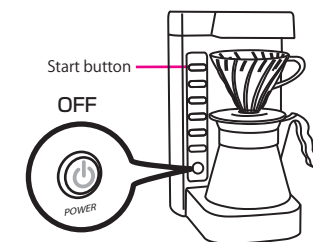
⚠ Do not open the water tank lid while hot water is pouring.
⚠ The heat retention plate gets hot, do not touch it with your hands.



4 Turn off the power with the switch and pour away the hot water.

After hot water has finished pouring, press the start button, then turn off the power with the switch. Pour away the hot water that was discharged into the server.

⚠ When brewing coffee immediately after cleaning, turn off the power with the switch and wait for at least five minutes before starting to brew again. Putting water into the water tank while the main body is hot may cause steam to be emitted and result in burns.



How to use

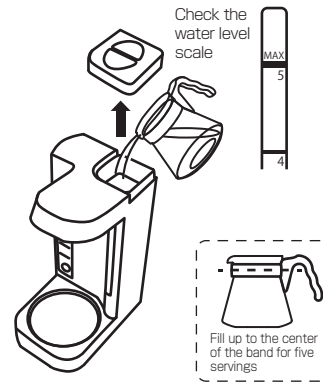
1 Pour tap water into the water tank.

※Use water at room temperature. Pouring in hot water may cause an error to display.

Remove the water tank lid, then **fill the tank with water corresponding to the required number of servings** with reference to the water scale. To brew five servings, fill up to the MAX / 5 mark (750mL).

- When pouring water using the server included with this product, fill up to the center of the band for five servings. For other numbers of servings, use the scale on the server or the water level window as a guide. (Approximately 150mL of water is required per serving of coffee)
- Fill with tap water for the required number of servings. Using mineral water, alkaline ionized water and well water is not recommended. Doing so may result in scaling and other damage to the inside of the main body.

- ⚠ Ensure that the water tank lid remains closed during operation.
- ⚠ The maximum capacity is five servings. Do not fill with water above the MAX / 5 mark (750mL).
- ⚠ If too much water is poured into the water tank, tilt the main body slightly and to pour it out through the overflow outlet on the back.



2 Fold the paper filter and place it in the dripper.

Fold the paper filter along the seam (the dotted line), set it securely in the dripper, then place the dripper onto the server.

- ⚠ Ensure that the server lid is removed.

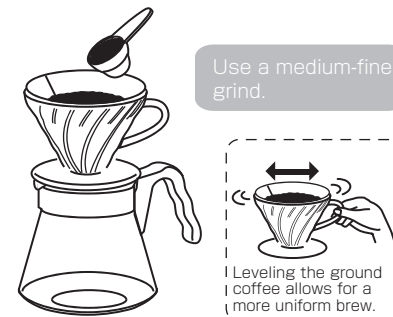


3 Add ground coffee.

Add ground coffee for the required number of servings. Shake lightly to level the coffee grounds after they have been added. One level scoop with the measuring spoon included with this product is equivalent to one serving of coffee.

- One level scoop with the measuring spoon is approximately 8g. Adjust the amount of ground coffee according to your preferred coffee strength. For a weaker brew, use the 7g or 6g line on the measuring spoon as a guide.
- A medium-fine grind is recommended.

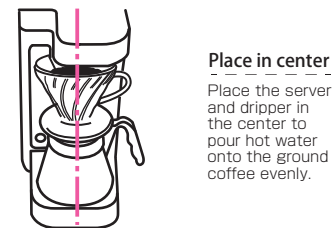
- ⚠ Do not add 50g or more of ground coffee. Adding too much ground coffee may cause coffee to overflow from the dripper during brewing.



4 Set the server and dripper in the main body.

Set the server and dripper in the main body without a paper filter or ground coffee.

- Position the server and dripper correctly in the center of the heat retention plate.
- ⚠ If the server and dripper are not in position or are placed off-center, boiling water may spill and result in burns.
- ⚠ Wipe thoroughly to prevent water from adhering to the server or the heat insulation plate. Moisture may be released during brewing.



5 Turn on the power with the switch.

Insert the power plug into an outlet, then turn on the power with the switch.

- ⚠ Use an outlet with a rating of 15A or above that is not in use by other appliances.



6 Press a serving selection button.

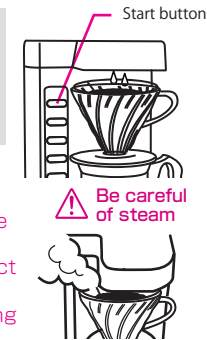
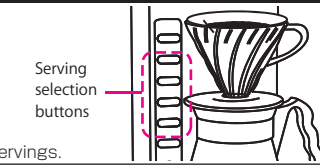
Press the button of the number of servings corresponding to the amount of water in the water tank. For five servings, press the "5 cups" button.

※This button sets the amount and time of preinfusion according to the number of servings.

7 Press the start button.

When the start button is pressed, the light on the left-hand side of the serving selection button blinks. After short time, the sound of water boiling can be heard. A small amount of hot water is discharged and ground coffee preinfusion is performed. After the flow is stopped for 30 seconds, the hot water flow starts again and brewing begins.

- The number of servings can be changed even after pressing the start button. To do so, press the start button again, press the button for the desired number of servings, then press the start button.
- ⚠ Hot steam is emitted from the brewing outlet. Do not open the lid of the tank while hot water is pouring or place your hands or face near the brewing outlet.
- ⚠ The heat retention plate gets hot, do not touch it with your hands. Use this product out of the reach of children.
- ⚠ Please be aware that hot water or coffee may splash from the upper opening during brewing.

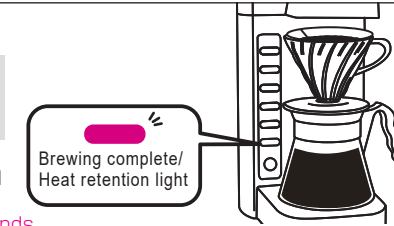


8 An alert sounds when brewing is complete.

Three beeps sound when brewing is complete. After brewing is complete, the brewing complete/heat retention light turns on and the product enters heat retention mode (the heat retention plate heats up).

- The heat retention plate maintains heat for 30 minutes. After 30 minutes, the heat retention light turns off automatically and heat retention mode is deactivated.

- ⚠ The heat retention plate gets hot, do not touch it with your hands.

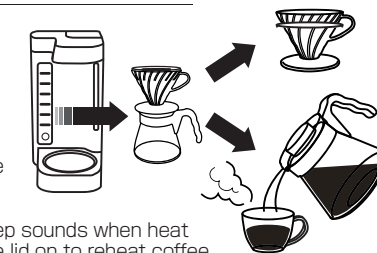


9 Remove the server from the main body and pour coffee.

Remove the server and dripper from the main body. Insert the lid into the server and pour the coffee into a cup. If any coffee remains in the server, place the server on the heat retention plate.

- ⚠ Coffee is extremely hot after brewing. Take care to avoid burns when drinking.

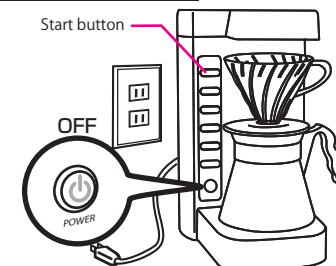
- The flavor and aroma of the coffee deteriorates over time. Serve as soon as possible after brewing (serving within 30 minutes is recommended).
- The heat retention plate is heated for 30 minutes. A single long beep sounds when heat retention finishes. The server can be heated in a microwave with the lid on to reheat coffee.
- Coffee may drip when removing the dripper. Please handle carefully.



10 Turn off the power when the heat retention mode is complete

When the brewing complete/heat retention light turns off, press the start button, then turn off the power with the switch.

- ⚠ When brewing coffee more than once in succession, turn off the power and wait for at least five minutes before brewing again. Inserting water into the water tank while the main body is hot may cause steam to be emitted and result in burns.
- ⚠ To turn off heat retention mode while heat retention is in progress, press the start button, check that the brewing complete/heat retention light is off, then turn off the power with the switch. (The start button also acts as a reset button.)
- ⚠ The heat retention plate remains hot for some time after the power is turned off with the switch. Do not touch it with your hands.



Remove the power plug from the outlet after use.

Amount of Coffee Grounds

■ Measuring spoon

Use this as a guide when measuring ground coffee.

Approx. 8g when level

7g line

6g line



Use about 8g of ground coffee per serving

Coffee: Medium-fine

■ Volume of brewed coffee

The relationship between the amount of ground coffee, the volume of water used and the volume of brewed coffee is shown below. Use this as a guide when adjusting the strength of the brew.

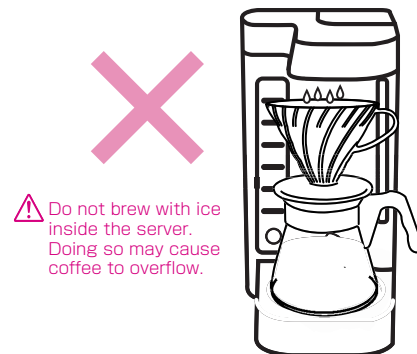
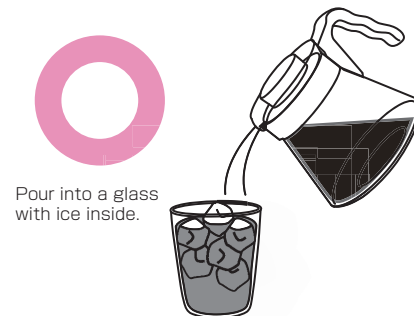
⚠ Put between 300mL and 750mL of water in the tank.

	Water in tank	Cups	Amount of ground coffee (8g per spoonful)	Hot water for preinfusion (approximate)	For 1 cup 120~130mL Volume of brewed coffee (approximate)	Time from pressing start button to end of brewing. Required time (approximate)
MAX 5	750mL	5 cups	40g	75mL	650mL	8 minutes 30 seconds
4	600mL	4 cups	32g	60mL	520mL	7 minutes 10 seconds
3	450mL	3 cups	24g	45mL	390mL	6 minutes
MIN 2	300mL	2 cups	16g	30mL	260mL	5 minutes

* The amount of coffee brewed will be slightly reduced due to absorption by the ground coffee. There is also variation depending on the type of grind and variety of coffee beans.
* The required time depends on the water temperature, the air temperature and the amount of heat remaining in the main body.

■ Making iced coffee

When making iced coffee, use ground coffee intended for making iced coffee and use less water for a stronger brew. The method is the same as for hot coffee. Putting ice in the server before brewing may cause coffee to overflow. Put ice in a glass, then pour strong brewed coffee into the glass.



Troubleshooting

If any abnormalities occur during use, turn off the power immediately and stop using the product. After the main body has cooled, check the information below. Contact Customer Service if the issue cannot be resolved.

Problem	Cause	Solution
All the lamps turn on and an alert sounds (an error is displayed).	Water at a temperature of 65°C or above was put into the tank.	Press the start button, turn off the power with the switch, then turn the power back on. (This cancels the error display.) Leave the main body to cool for at least five minutes, then put in water at a temperature below 65°C.
	Brewing was started while the main body was still hot.	
Coffee cannot be brewed.	The power plug is not inserted into the outlet.	Insert the power plug into the outlet.
	The power is off.	Press the power switch to turn on the power.
	There is no water in the water tank.	Put water in the water tank.
	There is no ground coffee in the dripper.	Set a paper filter in the dripper, then place ground coffee in the dripper.
	Brewing was started immediately after the previous operation was completed.	After brewing is complete, wait at least five minutes before starting brewing again.
Coffee extraction is slow.	The coffee beans are too finely ground.	Use a medium-fine grind.
Hot water is not discharged correctly.	There may be scaling on parts such as hot water pipes and switching valves.	Perform cleaning with citric acid to remove scaling, etc. (Refer to "Cleaning with citric acid" on page 1)
The coffee overflows.	The server lid was closed during brewing.	Remove the server lid.
	The amount of water in the tank exceeds the maximum capacity.	Do not put more than 750mL of water in the tank.
	Too much ground coffee has been added.	Do not add 50g or more of ground coffee.
	The coffee beans are too finely ground.	Use a medium-fine grind.
The brewed coffee is lukewarm.	The coffee beans or ground coffee were stored in a refrigerator or freezer.	Ensure that the coffee beans or ground coffee are at room temperature before use.
I am concerned about the odor of the paper filter.		Before setting the dripper on the main body, pour boiling water over the dripper with the paper filter inside and let the hot water pass through the paper filter before use.

[Solution when an error display occurs]

※ "Error display" refers to when all of the lights turn on and an alert sounds.

< Problem >

· The product previously functioned correctly, but an error display now occurs.

< Solution >

- ① Press the start button, then turn off the power with the switch.
- ② Remove the power plug from the outlet, then wait for at least 5 minutes.
- ③ Ensure that the main body has cooled, insert the power plug into the outlet and try using the product again.

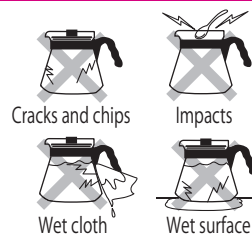
Server Use and Maintenance

Safety precautions

- ⚠ Do not use with any heating device other than a microwave oven.
- ⚠ Glass is fragile and may break. Handle carefully during normal use and cleaning.
- ⚠ Do not allow children to use this product. Do not use near children, and store out of reach of children.
- ⚠ The handle can not be detached from the glass container. Do not attempt to detach the handle. If the handle becomes loose or separated, refrain from further use.



- Wash the product before using for the first time.
- Do not use the product if it is cracked, broken, or heavily scratched as it may break unexpectedly.
- Do not strike or scrape the inside of the glass container with a metal spoon. Doing so may damage the product.
- Never wipe the glass body with a damp cloth or place it on a damp surface while hot. The sudden change in temperature may damage the product.
- If the product becomes damaged, please handle any broken pieces with care.
- Follow local rules on garbage disposal when disposing of this product.
- If exposed to heat, the handle may loosen over time. Do not continue to use the item if the plastic handle becomes very loose.
- If irregularities such as looseness or cracks are visible, refrain from further use.



Precautions for Use in a Microwave

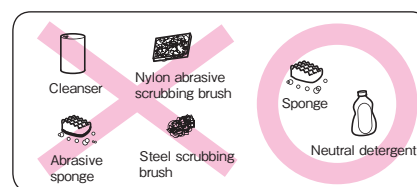
- ⚠ Liquid may boil rapidly, causing the liquid to suddenly be expelled from the container (known as the bumping phenomenon). Keep your face away from the product when removing from a microwave.

- Wipe off any water droplets from the outside of the product before placing in a microwave.
- Do not heat when empty or with very little inside.
- Consult the instruction manual of your microwave before use.
- The entire product will become hot after heating in a microwave. Use oven gloves to hold the body or handle when carrying. Do not place directly onto items that are not heat resistant such as a vinyl tablecloth. Always place on a pot stand.



Product care

- ⚠ Do not use cleansers or sponges that contain abrasives, as doing so may scratch the glass.



- The server and lid are dishwasher safe. Be sure to read the instruction manual provided with your dishwasher before use.
- If the glass is particularly dirty, use a diluted household bleach. Be sure to read the handling precautions of the household bleach thoroughly. Rinse thoroughly with water after bleaching.

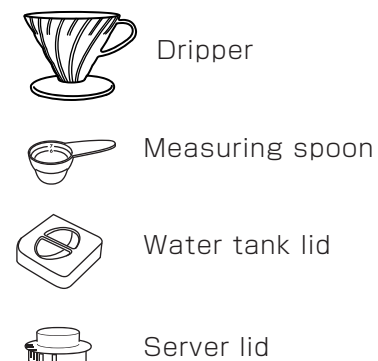
■ ■ ■ Approximate heating time in microwave ■ ■ ■
(Approximate time to heat from 20°C to 75°C)

※ Take care not to overheat.

※ The heating time varies depending on the model of the microwave and the temperature and volume of coffee. Make adjustments as needed.

V60 Coffee server 700 Volume to be heated : Approx. 700mL	
Wattage	
500W	About 6:30 minutes
600W	About 5:30 minutes
700W	About 4:30 minutes

Product Care / Product Specifications



Wash with water using a soft sponge and a neutral detergent.

This product is dishwasher safe. Be sure to read the instruction manual provided with your dishwasher before use.

Customer Service

HARIO CO., LTD.
<https://global.hario.com>
contact_us@hario.com

Product Specifications

Power source	AC 100V 50/60Hz
Power consumption	750W
Maximum Capacity	750mL
Minimum Capacity	300mL
Size	W165 x D223 x H318 (mm)
Cable length	1.25m
Weight	1.5kg

MADE IN CHINA *Dripper, Server, Paper Filter are made in JAPAN