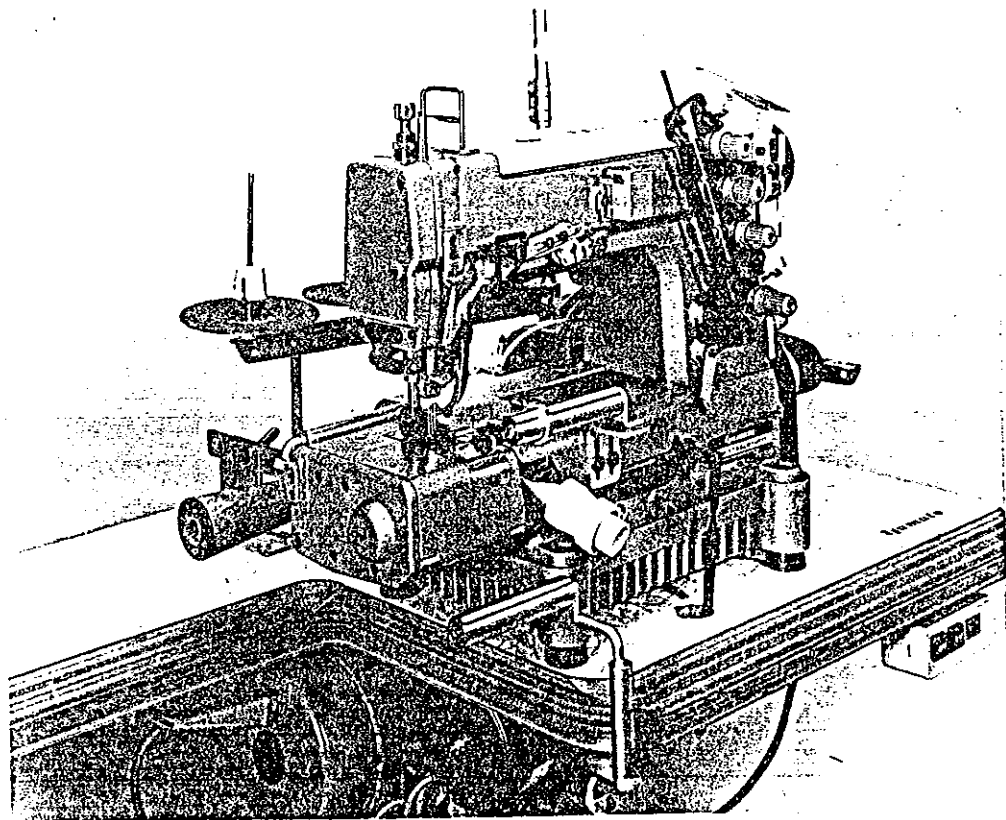


Jamato[®]

INSTRUCTIONS & PARTS LIST
FOR
MODEL DW-1735



1. Specifications

Model: DW - 1735MD / UT16

Name: High Speed, 3 Needle Sewing Machine with Cylindric Bed for Attaching Elastic at Waist

Dimensions: 480 (L) X 240 (W) X 430 (H) mm.
Circumference of Bed - 440 mm. (when fitted Rear Roller)

Weight: 45 kg.

Stitch Formation: 4 0 7 (ISO)

Use: For attaching a tubular elastic band at the tubular waist of briefs or the like .

Sewing Speed: Up to 5,000 s.p.m. Economical Speed - 4,000 s.p.m.

Stitch Length: 1.4 - 3.6 mm. 7 - 20 stitches per inch
8 - 21 stitches per 30 mm.

Needle Distance: "D" - - 5.6 mm.

Needles to Be Used: UY 128 GAS, #65, 70, 80, 90 (SCHMETZ or ORGAN)

Needle Bar Stroke: 33 mm.

Presser Foot Lifting: 7.0 mm.

Adjustment of Feeding: By Pushbutton

Differential Ratio: Normal Differential (Maximum) 1.0 : 1.8
Reverse Differential (Maximum) 1.0 : 0.8

Lubricant: YAMATO "SF" OIL or "TERESSO 47"

Lubrication: Automatic feeding by Gear Pump in combination with splashing

Reservoir: Capacity - 1,100 c.c.

Installation: To be installed on the top face of Table

Fabric Cutting Device: With Upper Knife Drop Mechanism

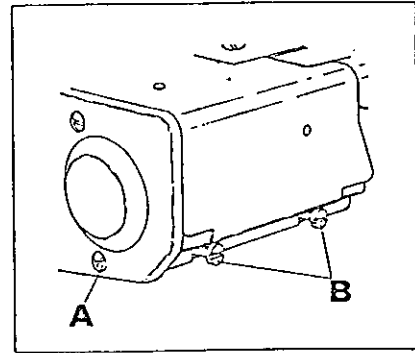
Attachment: UT16 - Automatic Thread Trimmer

3. Removal and Setting of Fabric Cutting Device Basement

Fabric Cutting Device Basement must be removed when Needle Guard (Front), Loper and Differential Feed Dog are adjusted.

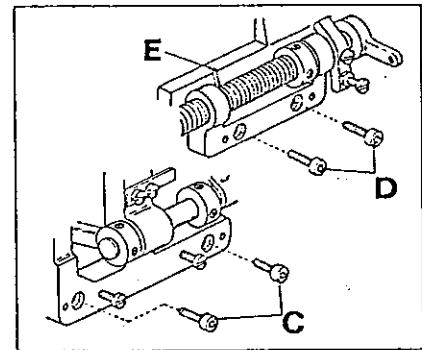
* Removal: -

- 1) Loosen Screw (A) and remove Side Cover.
- 2) Loosen Screw (B) and remove Cylinder Cover.
- 3) Loosen Screws (C) (D) and remove the Basement.

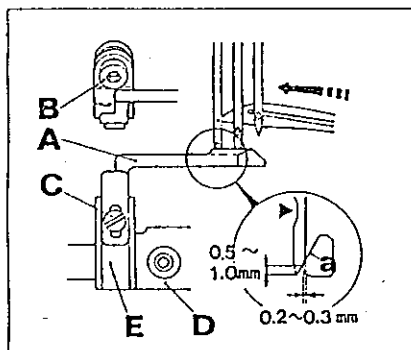


* Setting: -

- 1) Put each Positioning Pin into 4 holes of the Basement, then fix the Basement with Screws (C)(D). At this moment, the End (E) of Cutting Knife Return Spring must be applied to Machine Frame.
- 2) Fit Cylinder Cover and Side Cover with Screws (B) (A) respectively.



4. Relation between Needle and Needle Guard (Front)



When the point of Loper, on its way to left, reaches the center of left needle, Needle Guard (Front) (A) pushes the left needle backwards 0.2 - 0.3 mm. but the back face of the needle must not touch the point of Loper.

And, place the portion (a) of the Guard (A) at 0.5 - 1.0 mm. upper from the point of needle as shown in the sketch, and fix the Guard (A).

Then, bring back Loper to the right end of right needle and confirm that an allowance exists between the needle and the Guard (A).

The longitudinal adjustment is made by loosening Screw (B) of Needle Guard (Front) Holder, and the height is adjusted by loosening Screw (C) of the Guard. And, the lateral position of the Guard shall be decided by applying Needle Guard (Front) Holder (E) to the left end of Loper Holder Frame (D).

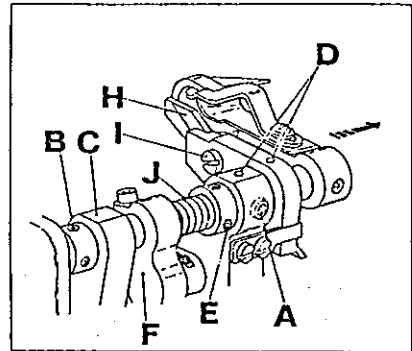
5. Adjustment of Fabric Cutting Device

5 - 1 Cutting Width of Fabric

The cutting width of fabric shall be changed as the following order.

- 1) Open Cylinder Cover, Front Cover and Chip Guard (Lower):.
- 2) Loosen Screw (A) of Lower Knife Holder and Screw (B) of Collar (Left).
- 3) Place Lower Knife Holder at the requisite position and tighten Screw (A).
- 4) Apply Collar (Left) to the edge face of Lower Knife Holder Bracket (C) and tighten Screw (B).

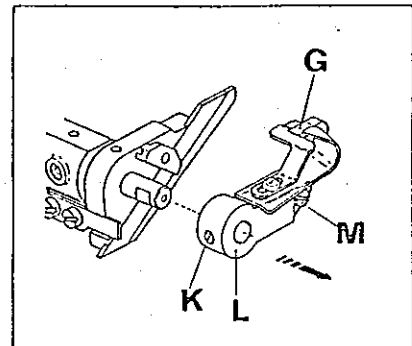
Note: Occasionally, feed a small quantity of oil to Oil Hole (D).



5 - 2 Removal and Setting of Lower Knife

* Removal: -

- 1) Loosen Screw (B) of Collar (Left) and Screw (E) of Collar (Right).
- 2) Push Upper Knife Connection (Upper) (F) to right and provide an allowance between Upper (G) and Lower (H) Knives, then tighten Screw (E) temporarily.
- 3) Loosen Screw (I) of Lower Knife Clamp and pull off Lower Knife (H) downwards.



* Setting: -

- 1) Insert Lower Knife (H) to its Holder and make the Blade even with the top face of Stitch Plate, then tighten Screw (I).
- 2) At this time, Upper and Lower Knives shall be engaged with the pressure of Spring (J) by loosening Screw (E) tightened temporarily. And, apply Collar (Right) to the left edge face of Lower Knife Holder keeping the pressure of Spring (J), and re-tighten Screw (E).
- 3) Put a thread between Upper and Lower Knives and turn Pulley manually to confirm the sharpness of Knives.
- 4) Apply Collar (Left) to the edge face of Lower Knife Holder Bracket (C) and tighten Screw (B).

5 - 3 Removal and Setting of Upper Knife

* Removal: -

- 1) Loosen Screw (K) and remove Upper Knife Holder (L).
- 2) Loosen Screw (M) and remove Upper Knife (G).

(Continued)

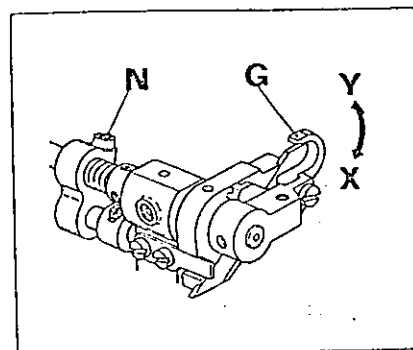
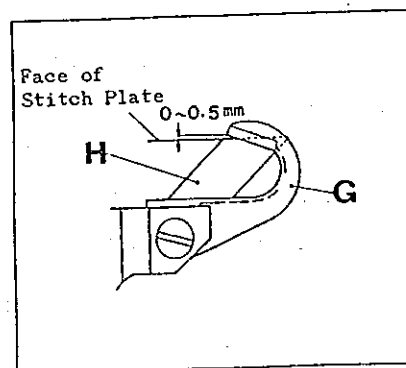
* Setting: -

- 1) Fit Upper Knife (G) to its Holder (L).
- 2) Make the edge face of Upper Knife Holder (L) even with the edge face of Upper Knife Driving Shaft, and tighten Screw (K).
- 3) At this time, Upper and Lower Knives shall be engaged with the pressure of Spring (J) by loosening Screw (E) of Collar (Right). And, apply Collar (Right) to the left edge face of Lower Knife Holder keeping the pressure of Spring (J), and tighten Screw (E).
- 4) Put a thread between Upper and Lower Knives and turn Pulley manually to confirm sharpness of Knives.
- 5) Loosen Screw (B) of Collar (Left) and apply the Collar to the edge face of Lower Knife Holder Bracket (C), then tighten Screw (B).

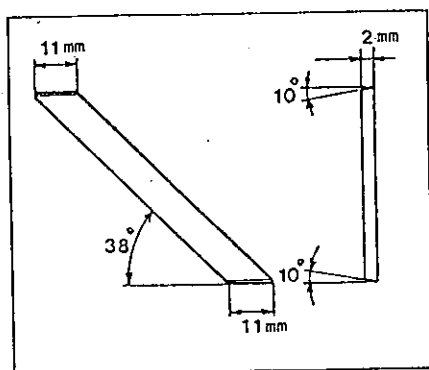
5 - 4 Engagement of Upper and Lower Knives

When Upper Knife comes to its lowest position, the engagement of Knives shall be as shown in the sketch right side.

The engagement is increased when Upper Knife is moved to the direction (X) and decreased by moving the Knife to (Y). This adjustment is made by loosening Screw (N) of Upper Knife Connection (Upper). Re-tighten Screw (N) after adjustment.



5 - 5 Sharpening of Knives



If the sharpness of fabric cutting becomes blunt, re-sharpen Lower Knife first referring to the sketch. In this re-sharpening it must be made with cooling in the water.

Upper Knife is made of Special Super Steel Alloy, so it is needless to re-sharpen about one year. And the provisional one must be ready always as the Knife cannot be sharpened by the ordinary grinder. When necessary, please report us or the dealer who sold the machine to you.

5 - 6 Upper Knife Drop Mechanism

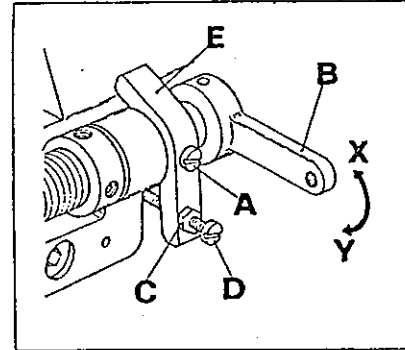
The Upper Knife Drop Mechanism is provided on Fabric Cutting Device of this machine, and the Mechanism has been adjusted not to operate at the shipment.

* To operate the Mechanism: -

- 1) Make Needles up to their highest position.

(Upper Knife, at its highest position, will be 4.0 mm. higher than the top face of Stitch Plate.)

- 2) Loosen Upper Knife Adjusting Stopper Screw (A).
- 3) Raise Upper Knife Drop Lever (B) to the direction (X) and tighten Screw (A) at the position where the Knife lowers to the bottom.



- 4) Loosen Lock Nut (C) and turn Stopper Screw (D) to left. And, tighten the Nut (C) when the point of Upper Knife comes to 4.0 mm. over the top face of Stitch Plate.

When the Mechanism is used, connect Knee Press with Upper Knife Drop Lever (B), then push Knee Press softly with your knee. At this moment, Upper Knife comes down to stop its operation. Upon releasing your knee from Knee Press, Upper Knife will commence its operation.

* To suspend the use of Mechanism: -

When the Mechanism is not used, it must restore the original state at the shipment in consideration of the durability.

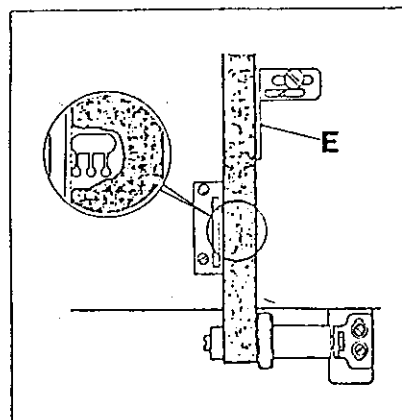
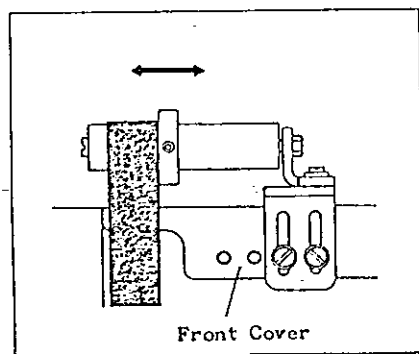
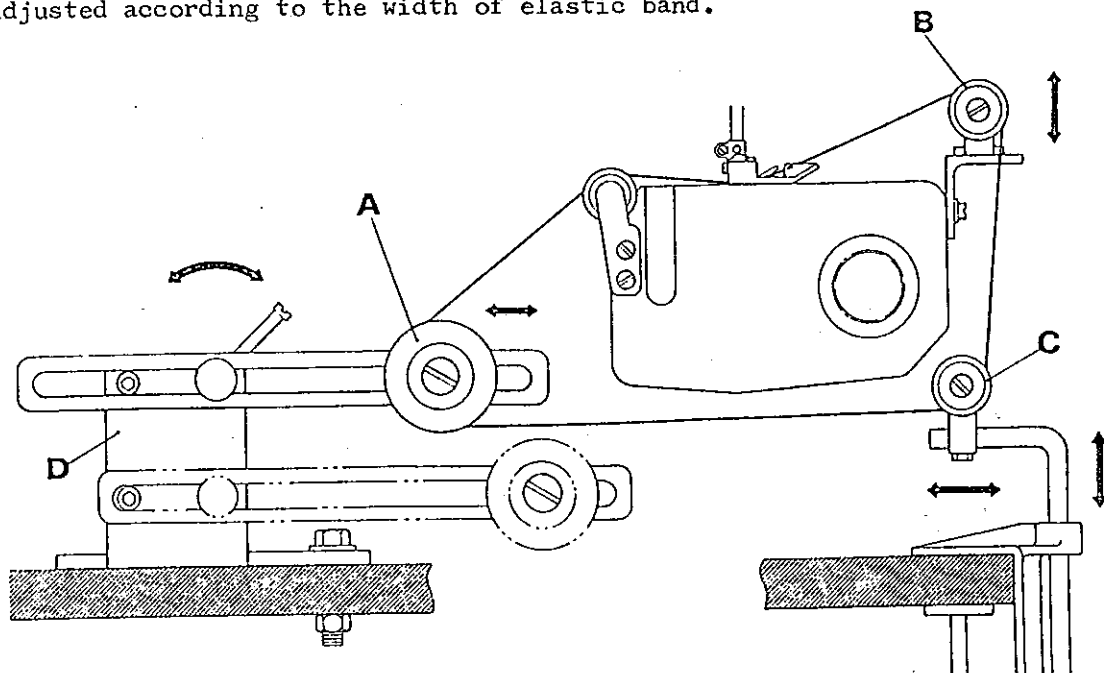
- 1) Make Needles up to their highest position.
- 2) Loosen Lock Nut (C) and turn Stopper Screw (D) until Upper Knife Adjusting Stopper (E) touches the Machine Frame. Then, tighten Lock Nut (C).
- 3) Loosen Adjusting Stopper Screw (A).
- 4) Lower Upper Knife Drop Lever (B) to the direction (Y) and tighten Screw (A) when the point of Upper Knife reaches 4.0 mm. higher than the top face of Stitch Plate.

6. Adjustment of Rollers

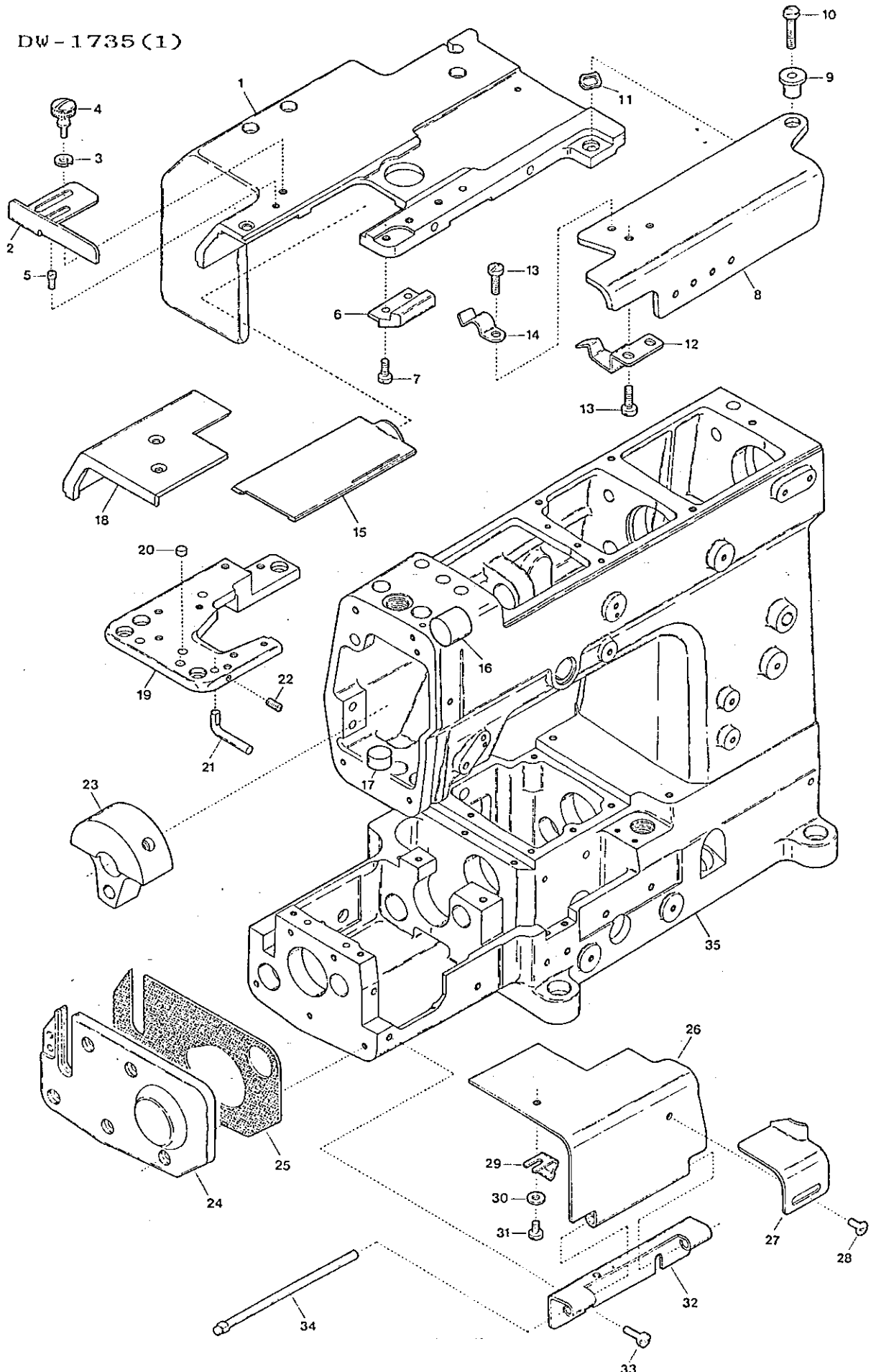
Tension Roller (A), Elastic Tape Roller (Front) (Upper) (B) and (Lower) (C) shall be set at the suitable position respectively according to size of the body of garment.

Tension Roller (A) can be adjusted longitudinally by loosening the Lever and set at the lower portion of its Holder (D) as occasion demands.

Elastic Tape Roller (Front) (Upper) (B) must be set at the right side of Front Cover. And, position of each Roller and Elastic Tape Guide (E) shall be adjusted according to the width of elastic band.



DW-1735(1)

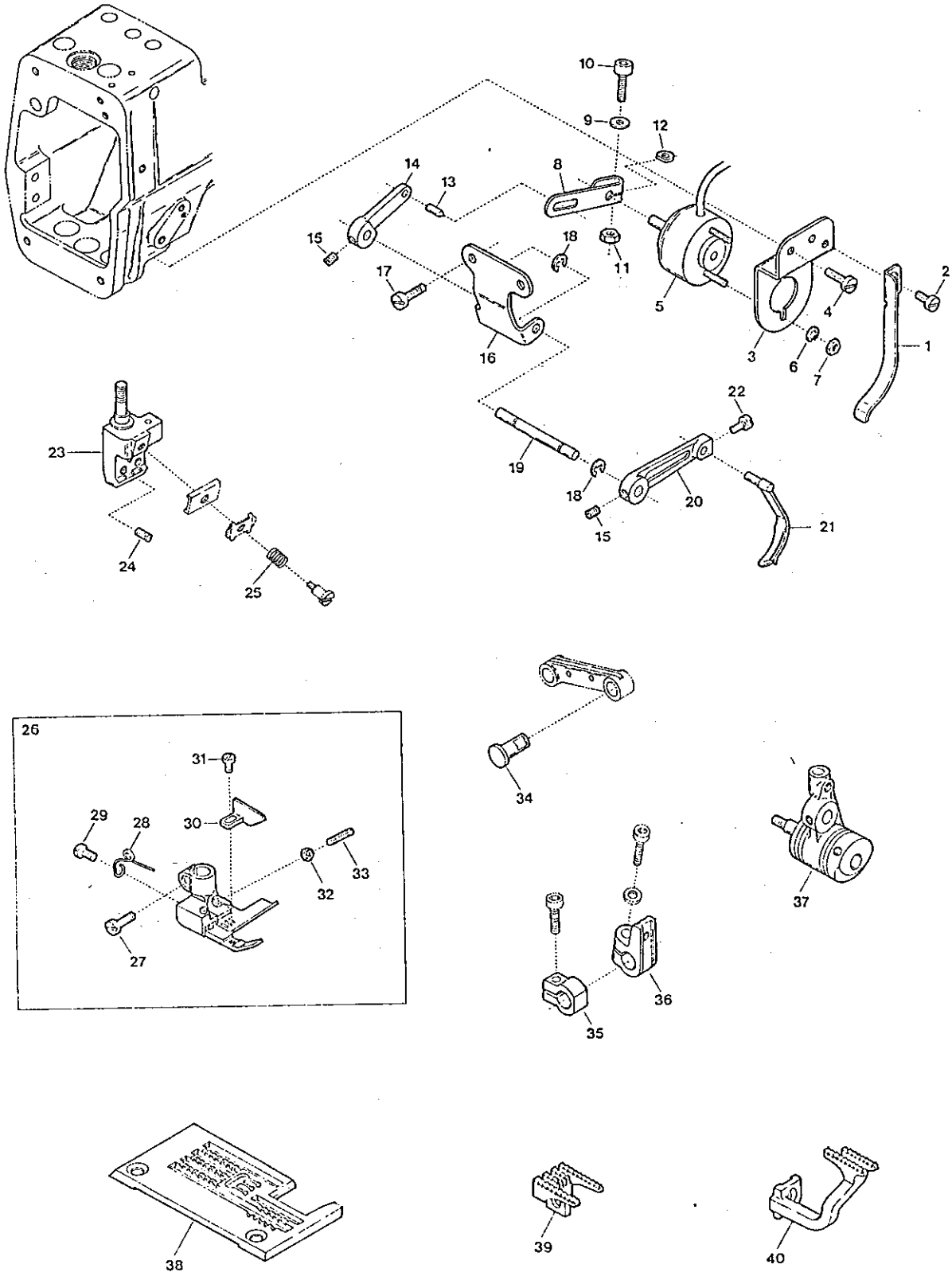


DW-1735 EXCLUSIVE PARTS(1)

サブモデル専用部品(1)

Ref. No	Parts No	Description	品名	Amt. Req.
1	64102	Cloth Plate	大カバー	1
2	64161	Elastic Tape Guide	ゴムガイド	1
3	6	Spring Washer for 64161	スプリングワッシャ	1
4	6439	Screw for 64161	ゴムガイド止ネジ	1
5	3410	Guide Screw for 64161	ガイドネジ	1
6	64117	Front Cover(Right)Latch	前カバー(右)バネ受ケ	1
7	1186	Screw for 64117	前カバー(右)バネ受ケ止ネジ	2
8	64112	Front Cover(Right)	前カバー(右)	1
9	64113	Front Cover(Right)Hinge	前カバー(右)ヒンジ	1
10	4407	Screw for 64113	前カバー(右)ヒンジ止ネジ	1
11	487	Corrugated Washer for 64112	波形ワッシャ	1
12	64116	Front Cover(Right)Latch Spring(Lower)	前カバーバネ(下)	1
13	4358	Screw for 64116,64115	止ネジ	3
14	64115	Front Cover(Right)Latch Spring(Upper)	前カバーバネ(上)	1
15	63651	Cloth Plate Slide Cover	滑り板	1
16	94604	Seal Plug	詰栓	1
17	63548	Seal Plug	詰栓	1
18	64107	Cloth Plate(Left)	ベッド上カバー	1
19	64110	Stitch Plate Support	針板取付板	1
20	38221	Seal Plug	詰栓	1
21	64111	Cylinder Cover Spring Latch	バネ受ケ	1
22	9526	Screw for 64111	バネ受ケ止ネジ	1
23	95400	Upper Shaft Counterweight	バランスウェイト	1
24	64193	Side Cover	横カバー	1
25	64105	Side Cover Gasket	横カバーパッキン	1
26	64108	Cylinder Cover	シリンダカバー	1
27	64160	Edge Guide	当て定規	1
28	1330	Screw for 64160	当て定規止ネジ	1
29	32609	Cylinder Cover Spring	シリンダカバーバネ	1
30	532	Washer for 32609	ワッシャ	1
31	7006	Screw for 32609	シリンダカバーバネ止ネジ	1
32	64109	Cylinder Cover Hinge	シリンダカバーヒンジ	1
33	9853	Screw for 64109	シリンダカバーヒンジ止ネジ	2
34	32608	Cylinder Cover Hinge Pin	シリンダカバーヒンジピン	1
35	64100	Machine Frame,Complete Set	アームベッド(組)	1

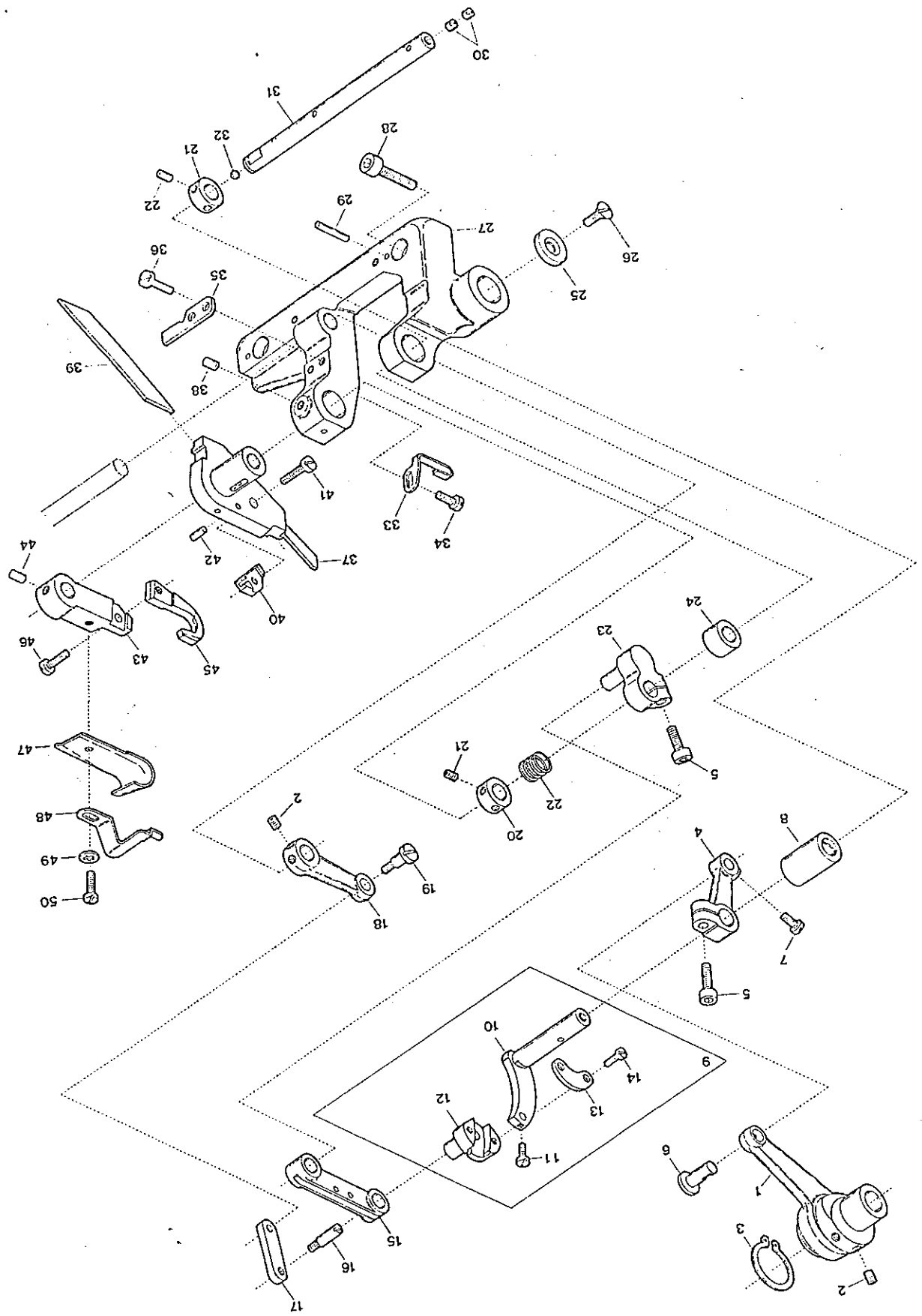
DW-1735 (2)



DW-1735 EXCLUSIVE PARTS(2)

サブモデル専用部品(2)

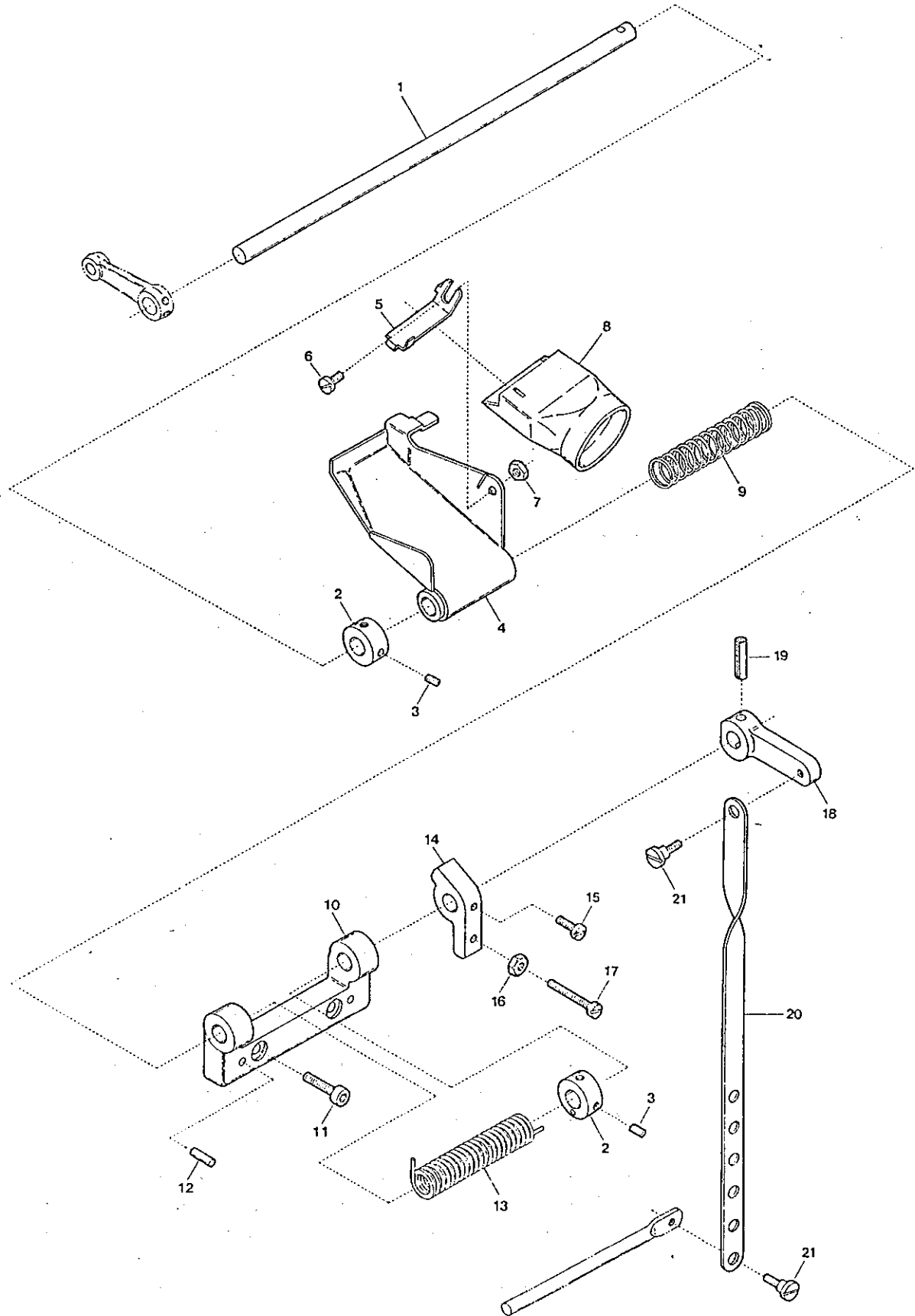
Ref. No.	Parts No.	Description	品名	Amt. Req.
1	63509	Thread Holder Spring Plate	針糸挟ミバネ	1
2	4358	Screw for 63509	針糸挟ミバネ止ネジ	1
3	63500	Wiper Solenoid Bracket	ワイパソレノイドブラケット	1
4	4353	Screw for 63500	ワイパソレノイドブラケット止ネジ	2
5	11737	Wiper Solenoid	ワイパソレノイド	1
6	2	Spring Washer for 11737	スプリングワッシャ	2
7	12	Nut for 11737	ナット	2
8	63502	Wiper Solenoid Lever	ワイパソレノイドレバー	1
9	540	Washer for 63502	ワッシャ	1
10	5550	Screw for 63502	ワイパソレノイドレバー止ネジ	1
11	334	Nut for 63502	ナット	1
12	418	Packing Piece for 63502	ファイバーパッキン	1
13	703	Guide Pin for 63502	ガイドピン	1
14	63503	Wiper Lever	ワイパレバー	1
15	3638	Screw for 63503,63505	止ネジ	2
16	63501	Wiper Bracket	ワイパブラケット	1
17	4440	Screw for 63501	ワイパブラケット止ネジ	2
18	33024	Retaining Ring	ストップリング	2
19	63504	Wiper Shaft	ワイパシャフト	1
20	63505	Wiper Adjusting Lever	ワイパ調節レバー	1
21	63506	Wiper	ワイパ	1
22	1208	Screw for 63506	ワイパ止ネジ	1
23	64066	Needle Clamp(D)	針止メ	1
24	1892	Screw for Needle	針止ネジ	3
25	32426	Needle Bar Thread Retainer Spring	針棒小調子バネ	1
26	64155	Presser Foot,Complete Set(D)	押エ(組)	1
27	1186	Screw for 64155	押エ(組)止ネジ	1
28	91725	Presser Foot Spring	小押エバネ	1
29	5133	Screw for 91725	小押エバネ止ネジ	1
30	64158	Presser Foot Tape Guide	押エテープガイド	1
31	1228	Screw for 64158	押エテープガイド止ネジ	1
32	220	Lock Nut	ロックナット	1
33	3300	Adjusting Screw for 64155	押エ調節ネジ	1
34	64189	Differential Feed Dog Link Pin	前送りリンクピン	1
35	64190	Looper Rocker Shaft Collar	ループ前後軸カラー	1
36	64188	Needle Guard(Front)Holder	針受ケ(前)腕	1
37	63552	Looper Holder Unit	ループ台(組)	1
38	64154	Stitch Plate	針板	1
39	64153	Main Feed Dog	前送り	1
40	64152	Differential Feed Dog	後送り	1



DW-1735 (3)

Ref. No.	Parts No.	Description	品名	Amt. Req.
1	64194	Upper Knife Driving Eccentric Unit	上メスエキセン(組)	1
2	3638	Screw for 64194,64130	止ネジ	4
3	64122	Retaining Ring	ストッパリング	1
4	64123	Upper Knife Driving Connection Arm	コネクショソフーム	1
5	5550	Screw for 64123,64131	止ネジ	1
6	64124	Upper Knife Driving Connecting Rod Pin	上メスロッドピン	1
7	4351	Screw for 64124	上メスロッドピン止ネジ	1
8	64142	Upper Knife Regulator Bushing	上メス調節ワッシユ	1
9	64133	Upper Knife Regulator, Complete Set	上メス調節器(組)	1
10	64125	Upper Knife Regulator	上メス調節器	1
11	4236	Stopper Screw for 64126	ストッパネジ	1
12	64126	Upper Knife Regulating Slide Pin	スライダ	1
13	64127	Upper Knife Regulating Slide Pin Cap	スライダキャップ	1
14	9624	Screw for 64127	スライダキャップ止ネジ	2
15	64129	Upper Knife Connection(lower)	上メスリンク(下)	1
16	5512	Screw for 64128	コネクショソフプレート止ネジ	1
17	64128	Upper Knife Connection Plate	コネクショソフプレート	1
18	64130	Adjusting Lever	調節レバー	1
19	6476	Screw for 64128	コネクショソフプレート止ネジ	1
20	94562	Upper Knife Holder Shaft Collar	上メス台軸カラー	2
21	3637	Screw for 94562	上メス台軸カラー止ネジ	4
22	94577	Upper Knife Spring	上メスバネ	1
23	64131	Upper Knife Connection(upper)	上メスリンク(上)	1
24	64143	Upper Knife Shaft Bushing	上メス軸ワッシユ	1
25	63181	Upper Knife Regulator Thrust Ring	スラストリング	1
26	9135	Screw for 63181	スラストリング止ネジ	1
27	64141	Lower Knife Holder Bracket	下メス台ブラケット	1
28	5520	Screw for 64141	下メス台ブラケット止ネジ	2
29	723	Positioning Pin for 64141	位置決めピン	2
30	3435	Screwed Plug	ネジ付き詰栓	2
31	64132	Upper Knife Holder Shaft	上メス台軸	1
32	638	Seal Plug	詰栓	1
33	64150	Oil Wick Holder	ルーパロッド油芯支エ	1
34	4106	Screw for 64150	ルーパロッド油芯支エ止ネジ	1
35	64140	Lower Knife Holder Locking Plate	下メス台回り止メ	1
36	4440	Screw for 64140	下メス台回り止メ止ネジ	2
37	64136	Lower Knife Holder	下メス台	1
38	2242	Screw for 64136	下メス台止ネジ	1
39	64137	Lower Knife	下メス	1
40	64138	Lower Knife Clamp	下メス押エ	1
41	9150	Screw for 64138	下メス押エ止ネジ	1
42	687	Pin for 64137	回り止メピン	1
43	64134	Upper Knife Holder	上メス台	1
44	3646	Screw for 64134	上メス台止ネジ	1
45	64135	Upper Knife	上メス	1
46	6867	Screw for 64135	上メス止ネジ	1
47	64139	Chip Guard(upper)	切屑落シ(上)	1
48	64159	Fabric Presser	布地押エ	1
49	548	Washer for 64159	ワッシヤ	1
50	9121	Screw for 64159	布地押エ止ネジ	1

DW-1735(4)

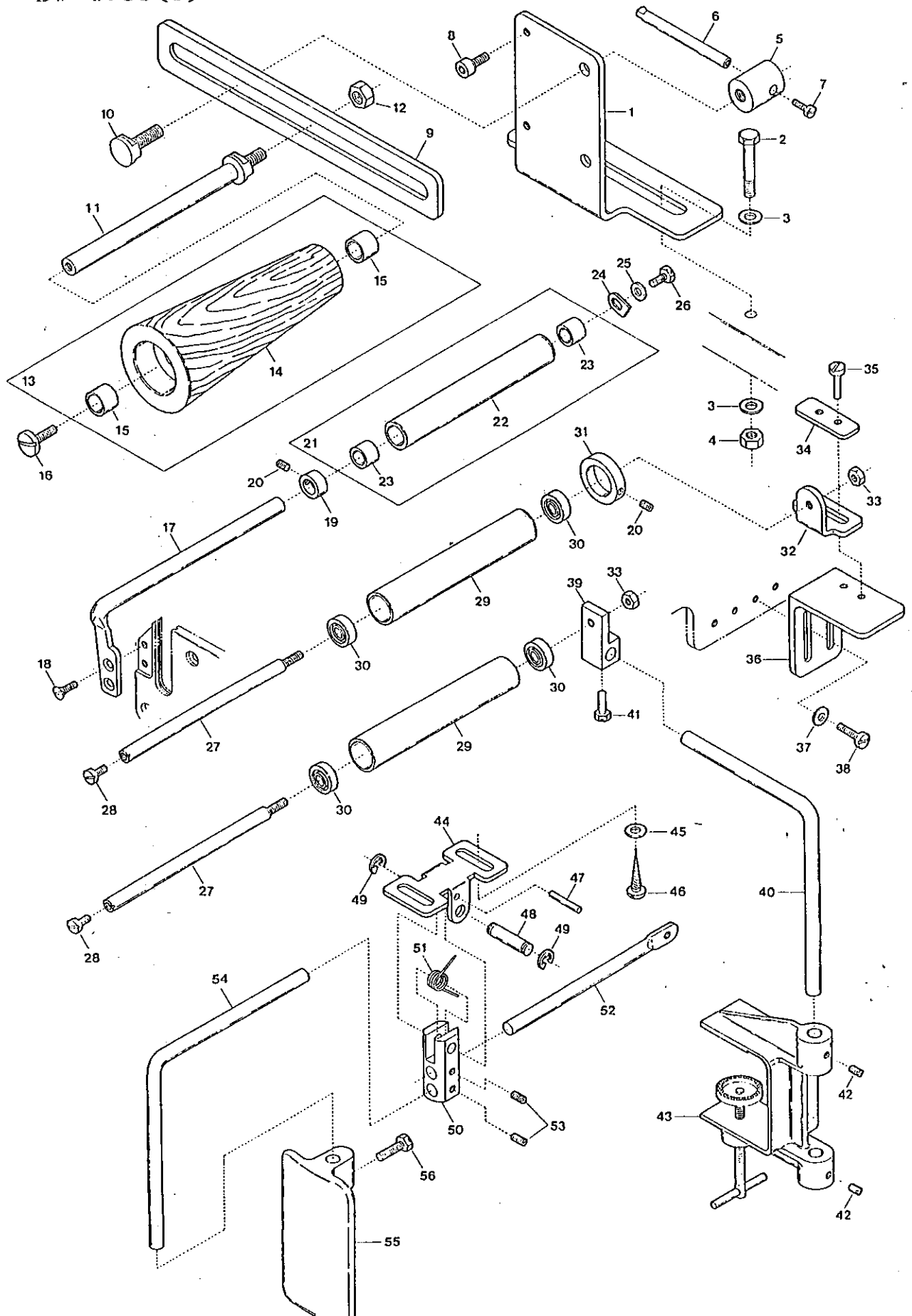


DW-1735 EXCLUSIVE PARTS(4)

サブモデル専用部品(4)

Ref. No	Parts No	Description	品名	Amt. Req.
1	64144	Upper Knife Drop Lever Shaft	上メスドロップレバー軸 . . .	1
2	93491	Upper Knife Drop Lever Shaft Collar	上メスドロップレバー軸カラー . . .	2
3	3638	Screw for 93491	レバー軸カラー止ネジ . . .	4
4	64149	Chip Guard(Lower)	切屑落シ(下)	1
5	64176	Suction Pipe Spring Plate	吸込管押エバネ	1
6	1203	Screw for 64176	吸込管押エバネ止ネジ . . .	1
7	322	Nut for 64176	ナット	1
8	64175	Suction Pipe	吸込管	1
9	64148	Chip Guard(Lower)Spring	切屑落シ(下)バネ	1
10	64146	Upper Knife Drop Lever Shaft Bracket	上メスドロップレバー軸受ケ1	
11	5550	Screw for 64146	レバー軸受ケ止ネジ	2
12	723	Positioning Pin	位置決メピン	2
13	64147	Upper Knife Return Spring	上メス戻シバネ	1
14	64145	Upper Knife Adjusting Stopper	上メス調節ストッパ	1
15	4437	Screw for 64145	上メス調節ストッパ止ネジ . . .	1
16	334	Lock Nut for 4407	ロックナット	1
17	4407	Adjusting Screw for 64145	調節ネジ	1
18	64183	Upper Knife Drop Lever	上メスドロップレバー	1
19	690	Fastener Pin for 64183	上メスドロップレバー止メピン . . .	1
20	64184	Upper Knife Drop Lever Connecting Plate	上メスドロップレバー連結板 . . .	1
21	6150	Screw for 64184	レバー連結板止ネジ	2

DW-1.735 (5)



Ref. No	Parts No	Description	品名	Amt. Req.
1	64174	Tension Roller Holder	テンションローラホルダ	1
2	9955	Screw for 64174	テンションローラホルダ止ネジ	2
3	443	Washer for 64174	ワッシャ	4
4	145	Nut for 64174	ナット	2
5	31014	Tension Roller Slider Stopper	スライダストッパ	1
6	31015	Tension Roller Shaft Stopper Handle	ローラ軸ストッパハンドル	1
7	9853	Screw for 31015	ハンドル止ネジ	1
8	6662	Guide Screw for 64173	スライダガイドネジ	1
9	64173	Tension Roller Slider	スライダ	1
10	6475	Screw for 64173	スライダ止ネジ	1
11	63469	Tension Roller Shaft	テンションローラ軸	1
12	16	Nut for 63469	ナット	1
13	63471	Tension Roller, Complete Set	テンションローラ(組)	1
14	63470	Tension Roller	テンションローラ	1
15	63460	Tension Roller Bushing	テンションローラブッシュ	2
16	9220	Screw for 63471	テンションローラ(組)止ネジ	1
17	64171	Elastic Tape Roller(Rear)Shaft	後ローラ軸	1
18	5345	Screw for 64171	後ローラ軸止ネジ	2
19	64178	Elastic Tape Roller(Rear)Stopper	後ローラ軸ストッパ	1
20	3637	Screw for 64178, 64166	止ネジ	2
21	64169	Elastic Tape Roller(Rear), Complete Set	後ローラ(組)	1
22	64170	Elastic Tape Roller(Rear)	後ローラ	1
23	64191	Elastic Tape Roller(Rear)Bushing	後ローラブッシュ	1
24	64167	Elastic Tape Roller(Rear)Stay	後ローラ支エ	1
25	538	Washer for 64167	ワッシャ	1
26	5506	Screw for 64167	後ローラ支エ止ネジ	1
27	64163	Elastic Tape Roller(Front)Shaft	前ローラ軸	2
28	4395	Screw for 64163	前ローラ軸止ネジ	2
29	38774	Elastic Tape Roller(Front)	前ローラ	2
30	38778	Ball Bearing for 38774	ボールベアリング	4

※ Ref.No 31 to 56 See the following page.

※ Ref.No 1 to 30See the preceding page

Ref. No	Parts No	Description	品 名	Amt. Req.
31	64166	Elastic Tape Guide	前ローラゴムガイド	1
32	64164	Elastic Tape Roller(Front)(Upper)Bracket	前ローラ(上)取付片	1
33	206	Nut for 64163	ナット	2
34	64168	Bracket Fixing Plate	取付片固定板	1
35	9150	Screw for 64168	取付片固定板止ネジ	2
36	64165	Roller(Front)(Upper)Positioning Bracket	前ローラ(上)位置決め台	1
37	547	Washer for 64165	ワッシャ	2
38	4437	Screw for 64165	位置決め台止ネジ	2
39	64177	Elastic Tape Roller(Front)(Lower)Holder	前ローラ(下)取付腕	1
40	64172	Elastic Tape Roller(Front)(Lower)Shaft	前ローラ(下)取付軸	1
41	5543	Screw for 64177	前ローラ(下)取付腕止ネジ	1
42	3662	Screw for 64172	前ローラ(下)取付軸止ネジ	2
43	11174	Clamp	クランプ	1
44	64179	Knee Press Support	膝受け台	1
45	428	Washer for 64179	ワッシャ	2
46	6910	Screw for 64179	膝受け台止ネジ	2
47	731	Pin for 64179	膝受け台ピン	1
48	64187	Knee Press Pin	膝受けピン	1
49	68202	Retaining Ring	ストップリング	2
50	64181	Knee Press Connecting Block	膝受け連結ブロック	1
51	64180	Knee Press Return Spring	膝受け戻シバネ	1
52	64186	Knee Press Connecting Shaft	膝受け連結軸	1
53	4474	Screw for 64186,64185	止ネジ	2
54	64185	Knee Press Shaft	膝受け軸	1
55	64182	Knee Press	膝受け	1
56	4635	Screw for 64182	膝受け止ネジ	1