

MODEL : SC-921(For China)

List No : 1550-05

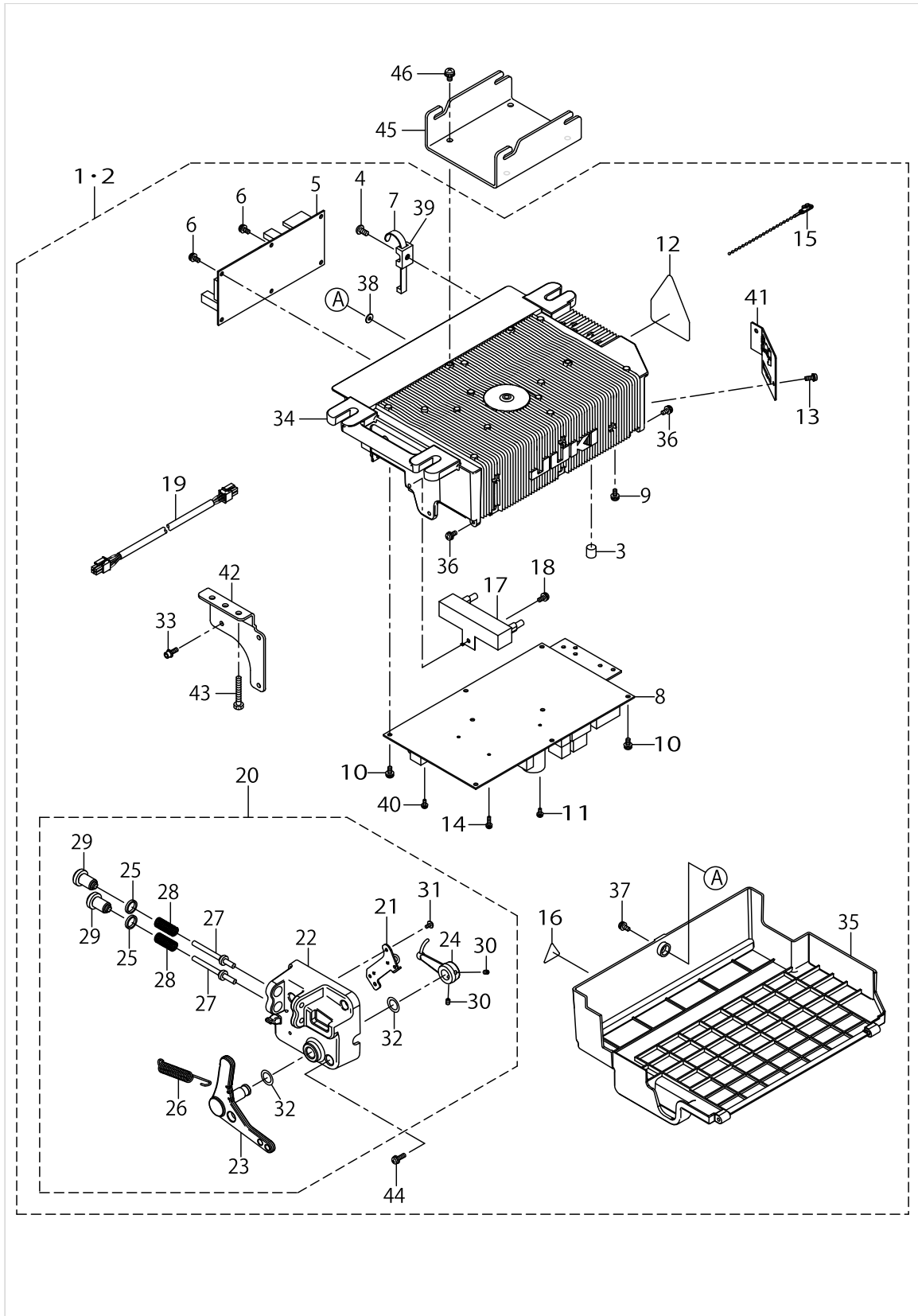
# PARTS LIST

Published:11/30/2017

## CONTENTS

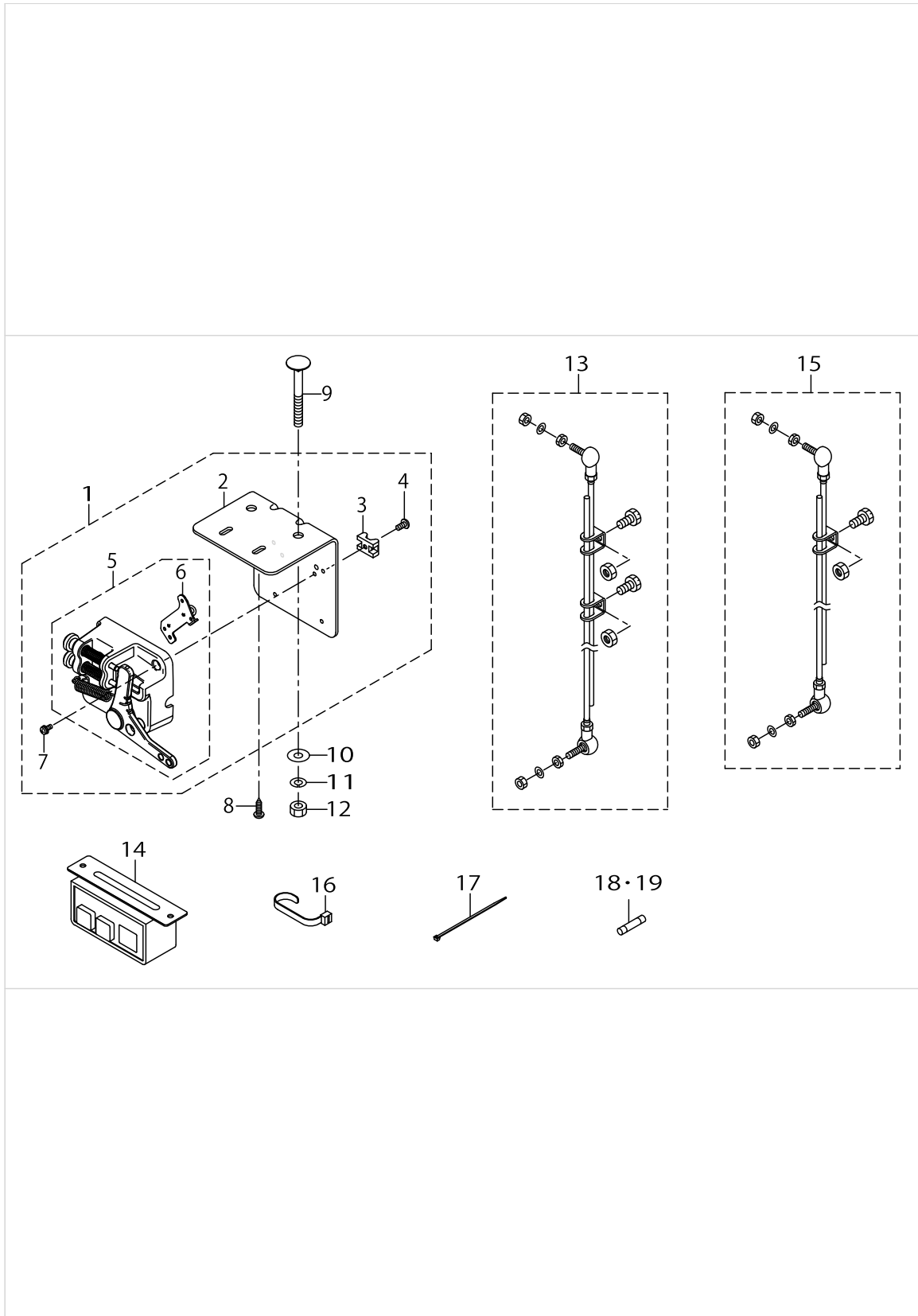
---

SC-921 .....	1
SC-921(Accessorie Parts) .....	3
CP-18 .....	5
HOW TO MAKE USE OF THIS PARTS LIST .....	7



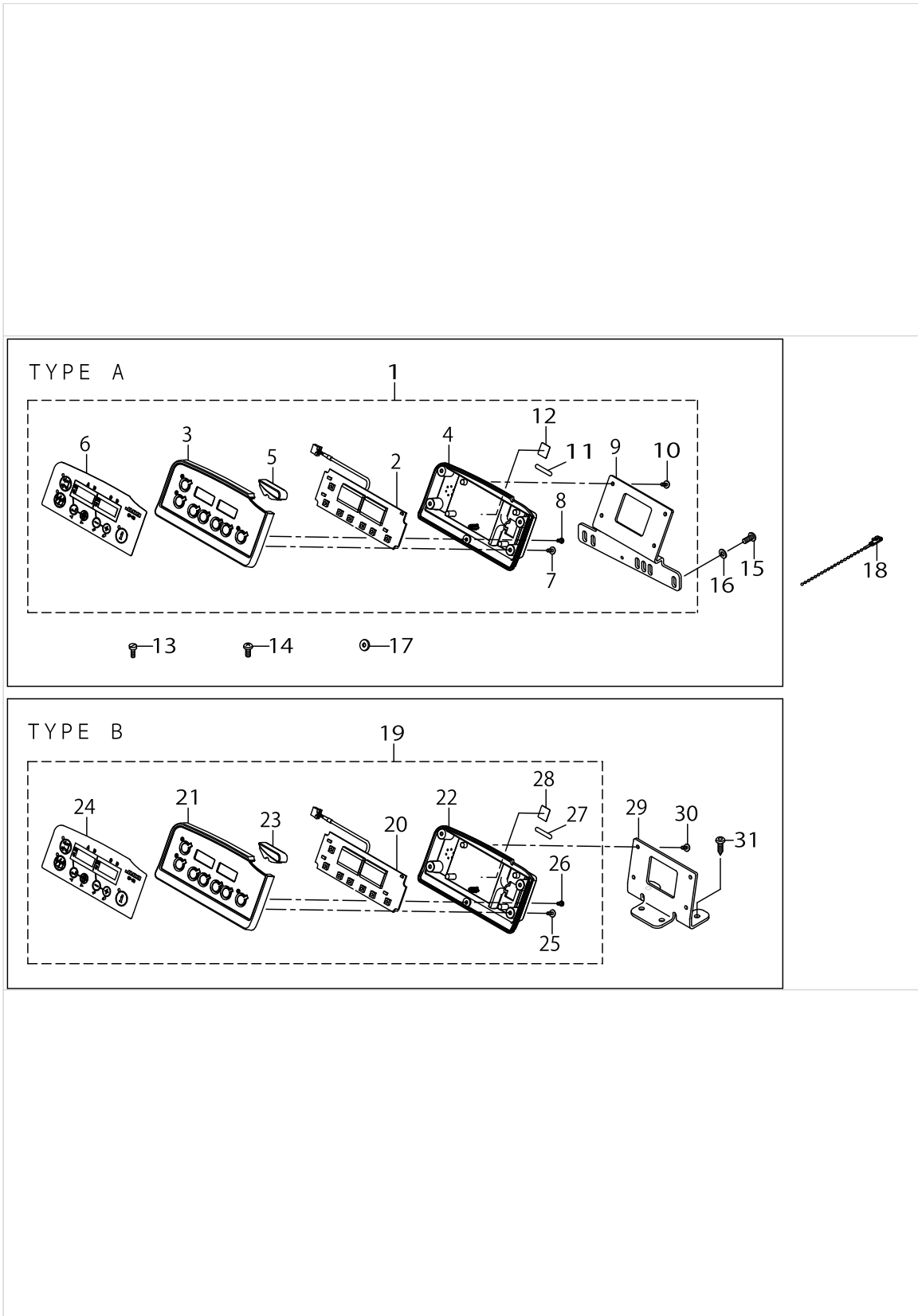
No.	Parts No.	Parts name	Remarks	Level	Cons	Qty
1	40095154	PSC UNIT 921 1P 220-240V PDL-SP	SEPARATION SPECIFICATIONS PEDAL			1
2	40100920	PSC UNIT 921 1P 220-240V	SPECIFICATIONS WITH PEDAL			1
3	40088316	RUBBER_CUSHION		*		2
4	SM4051001SC	SCREW M5 L=10		*		1
5	40095143	CTL921_PCB ASSY		*		1
6	SL4041081SC	SCREW M4 L=10		*		6
7	KX000000230	RELEASIBLE CABLE TIE		*		1
8	40087129	PWR-S PCB ASSY		*		1
9	SL4040881SC	SCREW M4 L=8		*		3
10	SL4041081SC	SCREW M4 L=10		*		10
11	SL4030881SC	SCREW M3 L=8		*		1
12	CM300400602	VOLTAGE CAUTION LABEL L=25		*		1
13	SL4041081SC	SCREW M4 L=10		*		2
14	SL4031081SC	SCREW M3 L=10		*		2
15	KX000000280	BEAD BAND		*		2
16	CM300100003	VOLTAGE WARNING LABEL(25)		*		1
17	40087154	RESISTANCE_A_ASSY		*		1
18	SL4041091SC	SCREW M4 L=10		*		1
19	40087153	DC POWER SUPPLY CORD ASSY		*		1
20	40094259	PEDAL SENSOR ASM	SPECIFICATIONS WITH PEDAL	*		1
21	40094260	SENSOR COIL HOLD ASSY	SPECIFICATIONS WITH PEDAL	*		1
22	40042130	PEDAL_SENSOR_BASE		*		1
23	40087156	PEDAL_LEVER_A		*		1
24	40042133	PEDAL_LEVER_B		*		1
25	40006202	ADJUST_NUT		*		2
26	40006207	FRONT_SPRING		*		1
27	40006208	SPRING_SHAFT_A		*		2
28	40049426	SPRING_C		*		2
29	40006212	ADJUST_SCREW		*		2
30	SM8040612TP	SCREW M4 L=6		*		2
31	SV4030601SR	SCREW M3 L=6		*		2
32	40088315	THRUST COLLAR		*		2
33	SL6041292TN	SCREW	SEPARATION SPECIFICATIONS PEDAL	*		3
34	40087165	FRAME_A		*		1
35	40087167	UNDER_COVER		*		1
36	40087157	HING SCREW		*		2
37	SL4041681SC	SCREW M4 L=16		*		1
38	M8002430000	STOPPER		*		1
39	KX000000210	SADDLE TYPE TIE MOUNT		*		1
40	SL4030881SC	SCREW M3 L=8		*		1
41	40087168	HOUSING_PLATE_A		*		1
42	40093424	BOX BRACKET	SEPARATION SPECIFICATIONS PEDAL	*		1
43	ST9053511SR	TAPPING SCREW M5X35	SEPARATION SPECIFICATIONS PEDAL	*		2
44	SL4041491SC	SCREW 4 X 14	SPECIFICATIONS WITH PEDAL	*		3
45	40099916	BOX_HANGER	ELECTRICAL EQUIPMENT IS HUNG AND THE TYPE			1
46	SL4051091SC	SCREW M5X0.8 L=10	ELECTRICAL EQUIPMENT IS HUNG AND THE TYPE			4

SC-921(Accessorie Parts)



SC-921(Accessorie Parts)

No.	Parts No.	Parts name	Remarks	Level	Cons	Qty
1	40095439	PEDAL SENSORBASE ASSY ATT_INSIDE	SEPARATION SPECIFICATIONS PEDAL			1
2	40093423	SENSOR BRACKET	SEPARATION SPECIFICATIONS PEDAL	*		1
3	KX000000210	SADDLE TYPE TIE MOUNT	SEPARATION SPECIFICATIONS PEDAL	*		1
4	SM4051001SC	SCREW M5 L=10	SEPARATION SPECIFICATIONS PEDAL	*		1
5	40094259	PEDAL SENSOR ASM	SEPARATION SPECIFICATIONS PEDAL	*		1
6	40094260	SENSOR COIL HOLD ASSY	SEPARATION SPECIFICATIONS PEDAL	*		1
7	SL4041091SC	SCREW M4 L=10	SEPARATION SPECIFICATIONS PEDAL	*		3
8	40093427	WOOD_SCREW D=5.1 L=18	SEPARATION SPECIFICATIONS PEDAL			2
9	40093426	MOTOR FITTING BOLT L=75	SEPARATION SPECIFICATIONS PEDAL			2
10	WP0851846SC	WASHER 8.5X22.0X1.8	SEPARATION SPECIFICATIONS PEDAL			2
11	WS0820002KR	SPRING WASHER, M8	SEPARATION SPECIFICATIONS PEDAL			2
12	NM6080002SC	NUT M8	SEPARATION SPECIFICATIONS PEDAL			2
13	40088314	CONNECTING_ROD_ASSY	FOR SPECIFICATIONS WITH PEDAL, SEPARATION SPECIFICATIONS PEDAL			1
14	M6101471CA0	POWER SWITCH C ASM.				1
15	M4501471AA0	CONNECTING ROD A ASM.	FOR ELECTRICAL EQUIPMENTS IS HUNG AND THE TYPE			1
16	KX000000230	RELEASIBLE CABLE TIE	SEPARATION SPECIFICATIONS PEDAL			1
17	EA9500B0100	CABLE BAND				1
18	KF000000080	SLO-BLO FUSE				1
19	KF000000030	SLO-BLO FUSE				1



CP-18

No.	Parts No.	Parts name	Remarks	Level	Cons	Qty
1	40088334	CP-18 TYPE A				1
2	40088126	CP PCB ASSY		*		1
3	40088347	FRONT_CASE		*		1
4	40088348	REAR_CASE		*		1
5	40088349	INDICATOR		*		1
6	40088351	PANEL SHEET		*		1
7	SV4030802SN	TAPPING SCREW WITH FLANGE M3X8		*		4
8	ST4030651SN	SCREW M3 X 6		*		1
9	40088350	PANEL BRACKET_A		*		1
10	SV4030802SN	TAPPING SCREW WITH FLANGE M3X8		*		4
11	40044616	TYPE LABEL A		*		1
12	CM600100101	WEEE MARK LABEL S		*		1
13	SS6111210SP	SCREW 11/64-40 L=12				2
14	SS4121215SP	SCREW 3/16-28 L=12				2
15	SM4051255SP	SCREW.,M5 L=12.				2
16	WP0501016SD	WASHER 5X10.5X1				4
17	B1144771000	FRAME SIDE COVER GASKET (C)				4
18	KX000000280	BEAD BAND				1
19	40092983	CP-18 TYPE B				1
20	40088126	CP PCB ASSY		*		1
21	40088347	FRONT_CASE		*		1
22	40088348	REAR_CASE		*		1
23	40088349	INDICATOR		*		1
24	40088351	PANEL SHEET		*		1
25	SV4030802SN	TAPPING SCREW WITH FLANGE M3X8		*		4
26	ST4030651SN	SCREW M3 X 6		*		1
27	40044617	TYPE LABEL B		*		1
28	CM600100101	WEEE MARK LABEL S		*		1
29	40088355	PANEL BRACKET B				1
30	SV4030802SN	TAPPING SCREW WITH FLANGE M3X8				4
31	40093427	WOOD_SCREW D=5.1 L=18				2



## HOW TO MAKE USE OF THIS PARTS LIST

1.As to "#01" and "#02" refer to the "Note" given at the bottom of the respective pages.

2.Codes on the "Qty" column

- Each numeral indicates the number of parts required.
- "0.1" and "2.5" indicate the length (in meters) of the respective parts.

3.Parentheses mean that the corresponding part is a subpart that constructs an assembly part.

4.Dotted lines on the Figures indicate assembly parts.

1. リストページの# 0 1、# 0 2の印は、ページ下の"注記"の説明を参照下さい。
2. 数量欄の数字は、個数を表し、0. 1、2. 5等の数値は、長さ（単位メートル）を表します。
3. 数量欄の（ ）は、組部品を構成している子部品であることを意味します。
4. イラストページの-----枠は、組構成であることを意味します。

NUMERICAL INDEX OF PARTS

PART NO	PAGE	REF NO.	PART NO	PAGE	REF NO.
40006202	2	25	CM300400602	2	12
40006207	2	26	CM600100101	6	28
40006208	2	27	EA9500B0100	4	17
40006212	2	29	KF000000030	4	18·19
40042130	2	22	KF000000080	4	18·19
40042133	2	24	KX000000210	2	39
40044616	6	11	KX000000210	4	3
40044617	6	27	KX000000230	2	7
40049426	2	28	KX000000230	4	16
40087129	2	8	KX000000280	2	15
40087153	2	19	KX000000280	6	18
40087154	2	17	M4501471AA0	4	15
40087156	2	23	M6101471CA0	4	14
40087157	2	36	M8002430000	2	38
40087165	2	34	NM6080002SC	4	12
40087167	2	35	SL4030881SC	2	40
40087168	2	41	SL4031081SC	2	14
40088126	6	20	SL4040881SC	2	9
40088314	4	13	SL4041081SC	2	13
40088315	2	32	SL4041091SC	2	18
40088316	2	3	SL4041091SC	4	7
40088334	6	1	SL4041491SC	2	44
40088347	6	21	SL4041681SC	2	37
40088348	6	22	SL4051091SC	2	46
40088349	6	23	SL6041292TN	2	33
40088350	6	9	SM4051001SC	2	4
40088351	6	24	SM4051001SC	4	4
40088355	6	29	SM4051255SP	6	15
40092983	6	19	SM8040612TP	2	30
40093423	4	2	SS4121215SP	6	14
40093424	2	42	SS6111210SP	6	13
40093426	4	9	ST4030651SN	6	26
40093427	4	8	ST9053511SR	2	43
40093427	6	31	SV4030601SR	2	31
40094259	2	20	SV4030802SN	6	30
40094259	4	5	WP0501016SD	6	16
40094260	2	21	WP0851846SC	4	10
40094260	4	6	WS0820002KR	4	11
40095143	2	5			
40095154	2	1·2			
40095439	4	1			
40099916	2	45			
40100920	2	1·2			
B1144771000	6	17			
CM300100003	2	16			