

MODEL : SC-910

List No : 1370-01

# PARTS LIST

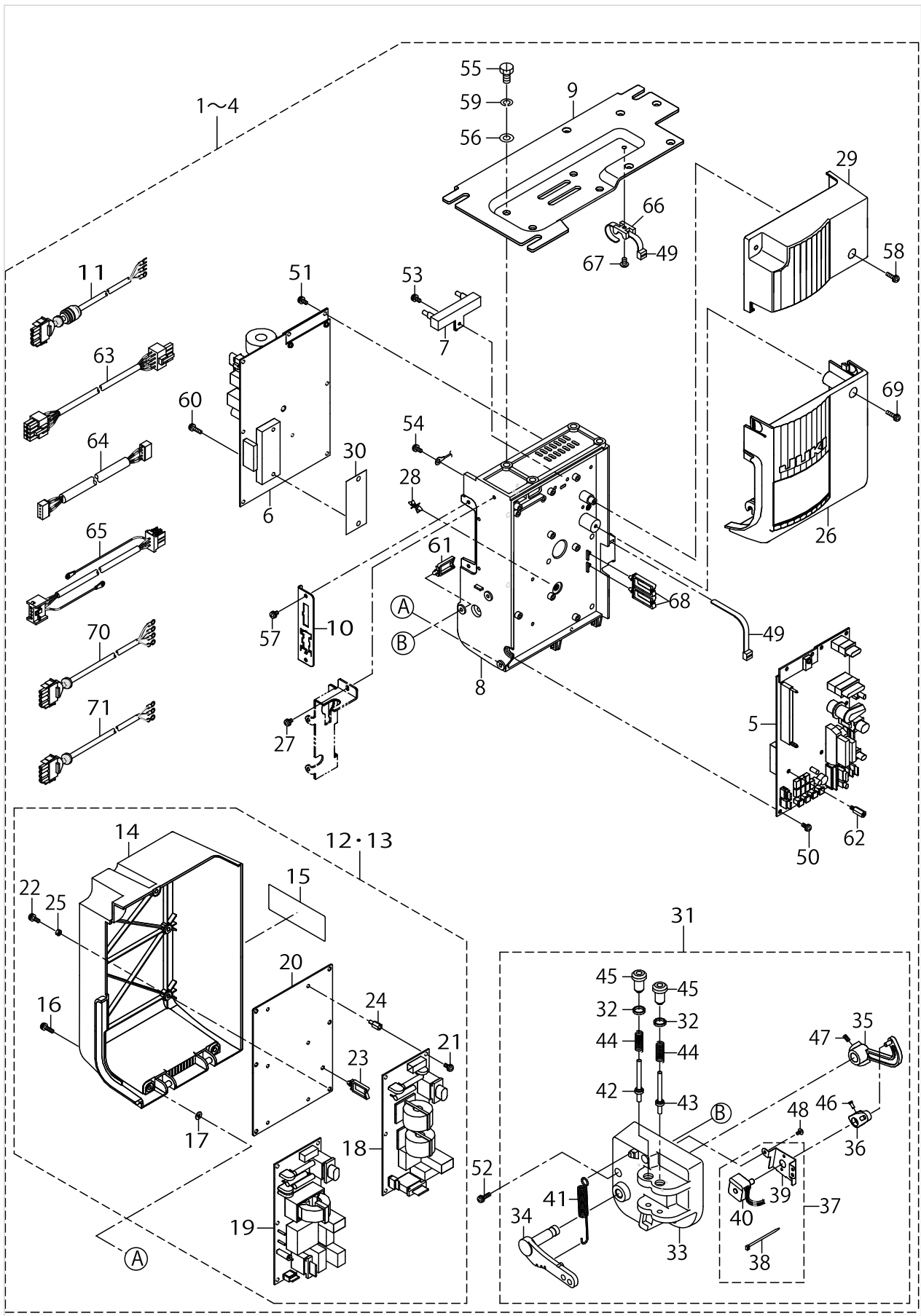
Published:09/10/2017

## CONTENTS

---

PSC UNIT COMPONENTS .....	1
PSC UNIT COMPONENTS (TYPE LH).....	5
ACCESSORIE PART COMPONENTS .....	9
HOW TO MAKE USE OF THIS PARTS LIST .....	13

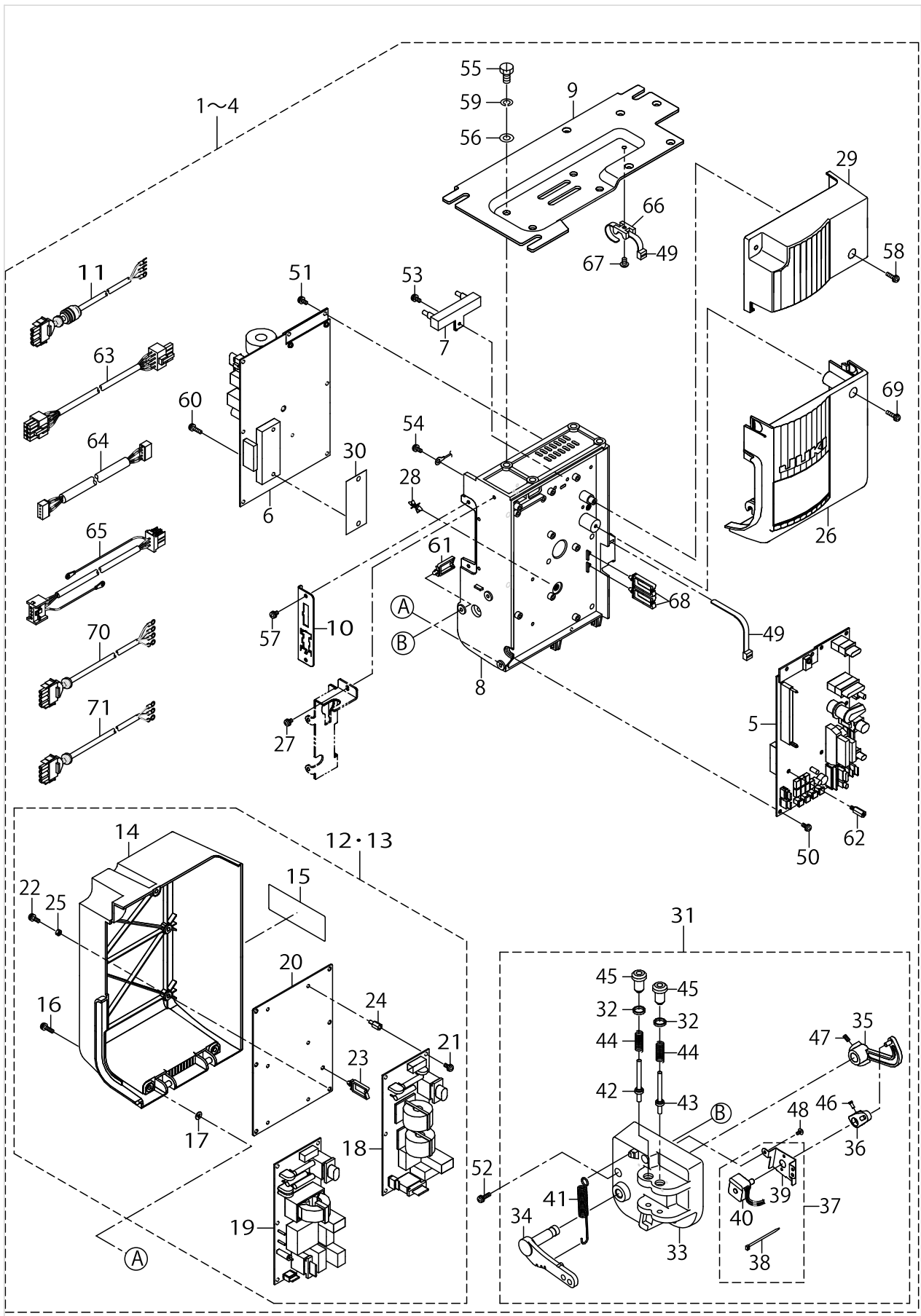
PSC UNIT COMPONENTS



PSC UNIT COMPONENTS

No.	Parts No.	Parts name	Remarks	Level	Cons	Qty
1	40006160	PSC UNIT VOLTAGE CHANGE PFL	FOR EXPORT 200~240V 3φ			1
2	40006162	PSC UNIT 1-PHASE 200-240V	FOR EXPORT 200~240V 1φ			1
3	40006164	PSC UNIT 1-PHASE 200-230V	FOR CE 220~240V 1φ			1
4	40006160	PSC UNIT VOLTAGE CHANGE PFL	FOR EXPORT 100~120V 1φ			1
5	40006038	CTL PCB A ASS'Y		*		1
6	40006057	PWR PCB A ASS'Y		*		1
7	40006134	RESISTANCE A ASS'Y		*		1
8	40006096	FRAME		*		1
9	40006095	BOX BRACKET		*		1
10	40006105	HOUSING PLATE		*		1
11	40006139	CABLE D ASS'Y	FOR CE	*		1
12	40006123	REAR COVER A ASM.	FOR EXPORT 200~240V 3φ 100~120V 1φ	*		1
13	40006124	REAR COVER B ASM.	FOR EXPORT 200~240V 1φ	*		1
14	40006093	REAR COVER		*		1
15	CM300100402	LABEL 3(SMALL)		*		1
16	SL4041691SC	SCREW M4 L=16		*		2
17	M8002430000	STOPPER		*		3
18	40018664	FLT-S PCB B ASSY	FOR EXPORT 200~240V 1φ	*		1
19	40018674	FLT-T PCB B ASSY	FOR EXPORT 200~240V 3φ 100~120V 1φ	*		1
20	40006103	FILTER PCB BKT		*		1
21	SL4041081SC	SCREW M4 L=10		*		6
22	SL4041291SC	SCREW M4 L=12		*		6
23	HX00222000B	CABLE CLAMP		*		1
24	HX003390000	STUD		*		6
25	NM6040001SC	NUT M4		*		6
26	40006092	FRONT COVER		*		1
27	SL4040881SC	SCREW M4 L=8		*		3
28	KX000000220	LOCKING CIRCUIT BOARD SUPPORT		*		1
29	40006091	TOP COVER		*		1
30	40017139	SARCON SHEET		*		1
31	40006128	PEDAL SENSOR B ASM.		*		1
32	40006202	ADJUST NUT		*		2
33	40006104	PEDAL SENSOR BASE		*		1
34	40006112	PEDAL LEVER		*		1
35	40006204	PEDAL LINK		*		1
36	40006205	VOLUME LINK		*		1
37	40006135	SENSOR FITTING PLATE A ASM.		*		1
38	EA9500B0100	CABLE BAND		*		1
39	40006206	SENSOR INSTALLING PLATE		*		1
40	40006136	SENSOR A ASM.		*		1
41	40006207	FRONT SPRING		*		1
42	40006208	SPRING SHAFT A		*		1
43	40006209	SPRING SHAFT B		*		1
44	40006211	SPRING B		*		2
45	40006212	ADJUST SCREW		*		1
46	SM4030801SC	SCREW M3 X 8		*		1

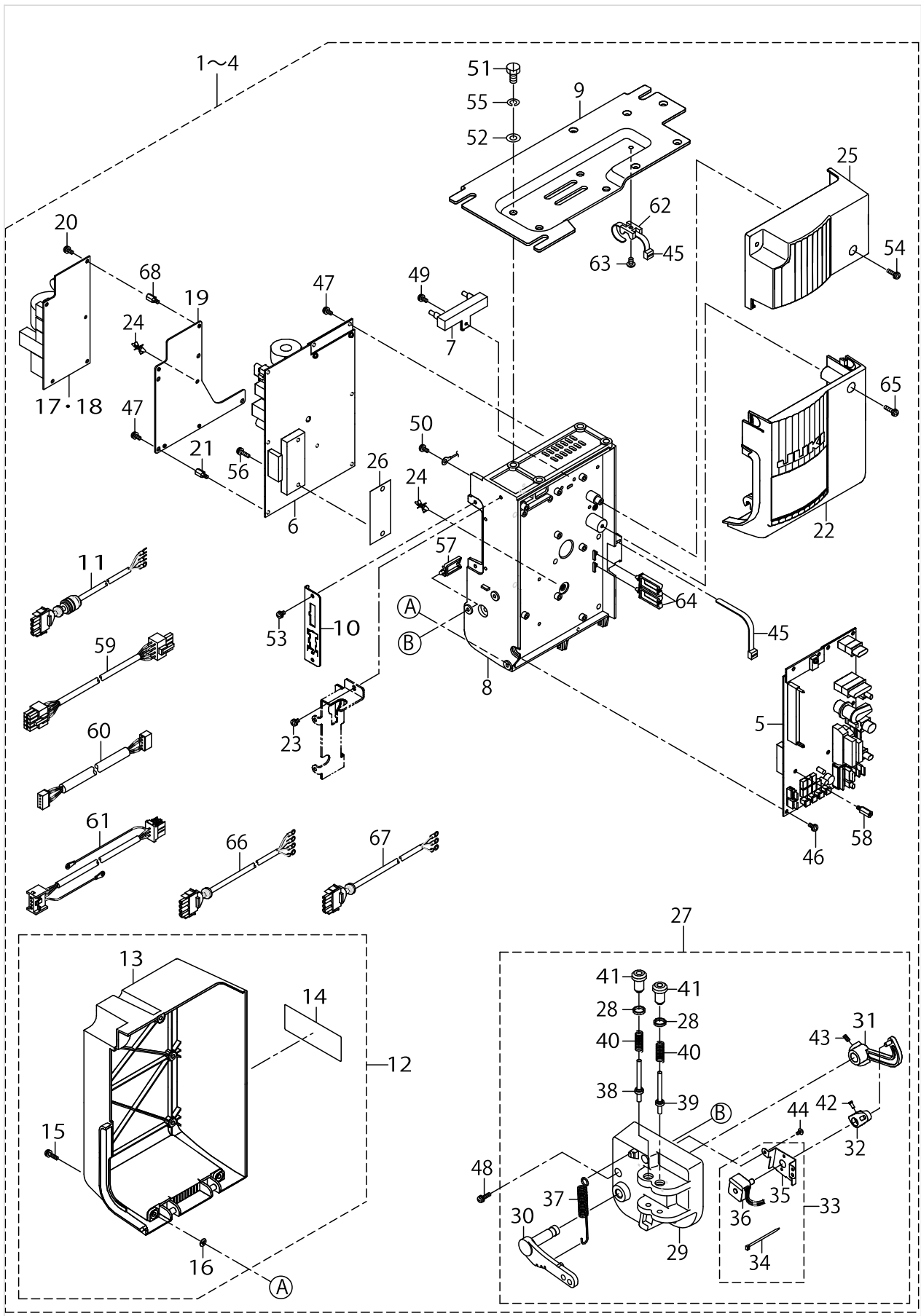
PSC UNIT COMPONENTS



PSC UNIT COMPONENTS

No.	Parts No.	Parts name	Remarks	Level	Cons	Qty
47	SM8040802TP	SCREW M4X8		*		2
48	SV4030601SR	SCREW M3 L=6		*		2
49	KX000000230	RELEASIBLE CABLE TIE		*		2
50	SL4041081SC	SCREW M4 L=10		*		6
51	SL4041081SC	SCREW M4 L=10		*		8
52	SL4041681SC	SCREW M4 L=16		*		3
53	SL4041081SC	SCREW M4 L=10		*		1
54	SL4041091SC	SCREW M4 L=10		*		3
55	SM9081653SC	SCREW M8 L=16		*		4
56	WP0841601SC	WASHER 8.4X17.4X1.6		*		4
57	SL4040881SC	SCREW M4 L=8		*		2
58	SL4041691SC	SCREW M4 L=16		*		2
59	WS0820002KN	SPRING WASHER M8		*		4
60	SL4041681SC	SCREW M4 L=16		*		2
61	KX000000190	LOCKING WIRE SADDLE		*		1
62	E3724715000	VCS STUD A		*		3
63	40006130	SOLENOID CORD A ASS'Y		*		1
64	40006131	RELAY CORD A ASS'Y		*		1
65	40006129	AC POWER SUPPLY CORD A		*		1
66	KX000000210	SADDLE TYPE TIE MOUNT		*		1
67	SM4050801SC	SCREW M5X0.8 L=8		*		1
68	KX000000200	LOCKING WIRE SADDLE		*		2
69	SL4041895SC	SCREW		*		1
70	40012008	PSC UNIT CABLE A ASS'Y	FOR EXPORT 200~240V 3φ	*		1
71	40012009	PSC UNIT CABLE B ASS'Y	FOR EXPORT 200~240V 1φ	*		1

PSC UNIT COMPONENTS (TYPE LH)

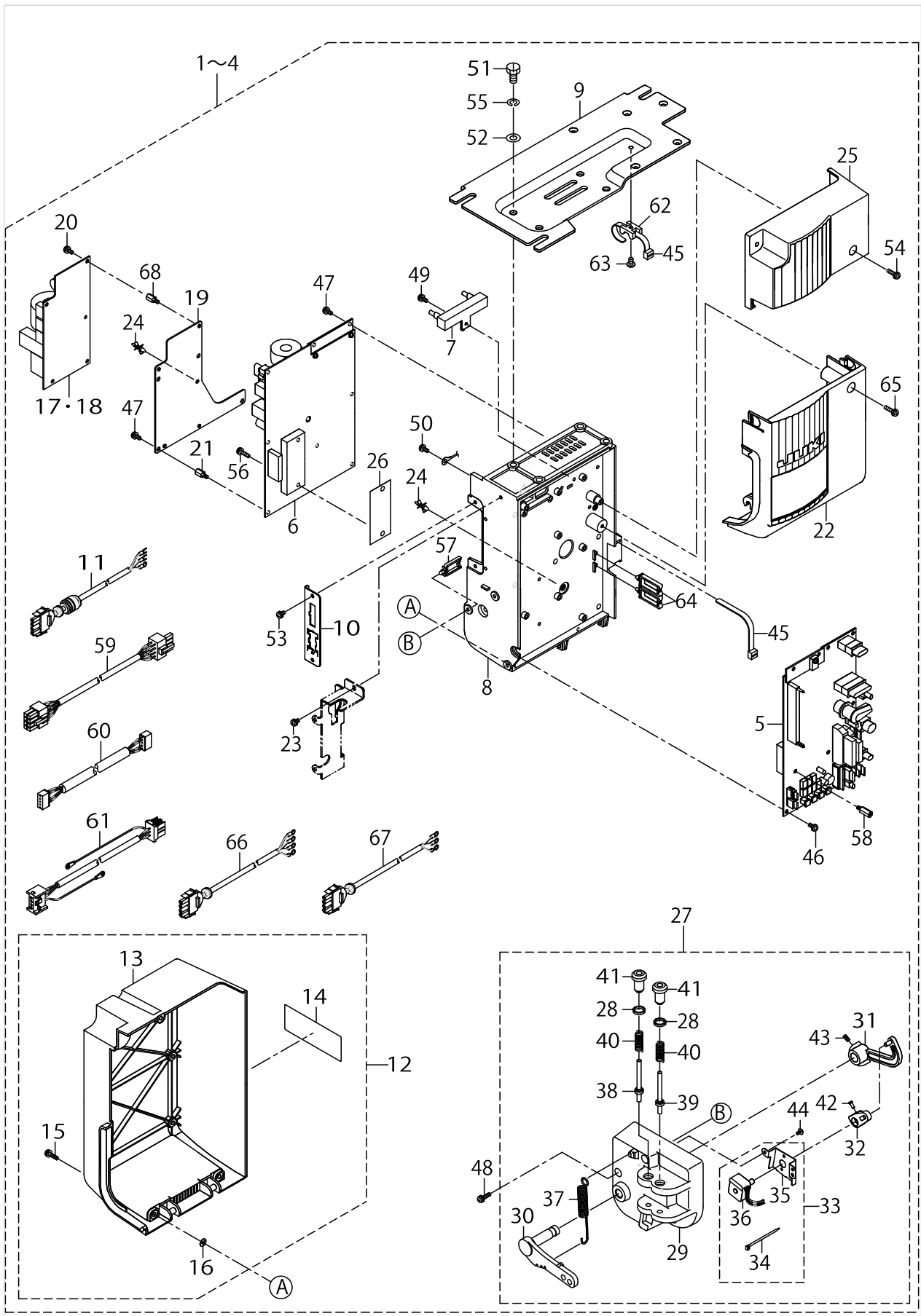


PSC UNIT COMPONENTS (TYPE LH)

No.	Parts No.	Parts name	Remarks	Level	Cons	Qty
1	40034992	PSC UNIT VOLTAGE SELECT PFL(LH)	FOR EXPORT 200~240V 3φ			1
2	40034993	PSC UNIT 1PHASE 200~240V(LH)	FOR EXPORT 200~240V 1φ			1
3	40034994	PSC UNITE 1PHASE 200~240V CE P	FOR CE 220~240V 1φ			1
4	40006160	PSC UNIT VOLTAGE CHANGE PFL	FOR EXPORT 100~120V 1φ			1
5	40035000	CTL PCB B ASSY		*		1
6	40006057	PWR_PCB_A_ASSY		*		1
7	40006134	RESISTANCE_A_ASSY		*		1
8	40006096	FRAME		*		1
9	40006095	BOX BRACKET		*		1
10	40006105	HOUSING_PLATE		*		1
11	40006139	CABLE_D_ASSY	FOR CE	*		1
12	40043863	REAR COVER C ASSY		*		1
13	40043864	REAR COVER B		*		1
14	CM300100402	LABEL 3(SMALL)		*		1
15	SL4041691SC	SCREW M4 L=16		*		2
16	M8002430000	STOPPER		*		3
17	40040166	FLT-S PCB A ASSY	FOR EXPORT 200~240V 1φ	*		1
18	40040176	FLT-T PCB A ASSY	FOR EXPORT 200~240V 3φ 100~120V 1φ	*		1
19	40043865	FLT PCB HOLDER BOARD		*		1
20	SL4041081SC	SCREW M4 L=10		*		4
21	40037480	STUD		*		4
22	40006092	FRONT_COVER		*		1
23	SL4040881SC	SCREW M4 L=8		*		3
24	KX000000220	LOCKING CIRCUIT BOARD SUPPORT		*		2
25	40006091	TOP_COVER		*		1
26	40017139	SARCON SHEET		*		1
27	40006128	PEDAL SENSOR B ASM.		*		1
28	40006202	ADJUST_NUT		*		2
29	40006104	PEDAL_SENSOR_BASE		*		1
30	40006112	PEDAL_LEVER		*		1
31	40006204	PEDAL_LINK		*		1
32	40006205	VOLUME_LINK		*		1
33	40006135	SENSOR FITTING PLATE A ASM.		*		1
34	EA9500B0100	CABLE BAND		*		1
35	40006206	SENSOR_INSTALLING_PLATE		*		1
36	40006136	SENSOR A ASM.		*		1
37	40006207	FRONT_SPRING		*		1
38	40006208	SPRING_SHAFT_A		*		1
39	40006209	SPRING_SHAFT_B		*		1
40	40006211	SPRING_B		*		1
41	40006212	ADJUST_SCREW		*		1
42	SM4030801SC	SCREW M3 X 8		*		1
43	SM8040802TP	SCREW M4X8		*		2
44	SV4030601SR	SCREW M3 L=6		*		2
45	KX000000230	RELEASIBLE CABLE TIE		*		2
46	SL4041081SC	SCREW M4 L=10		*		6



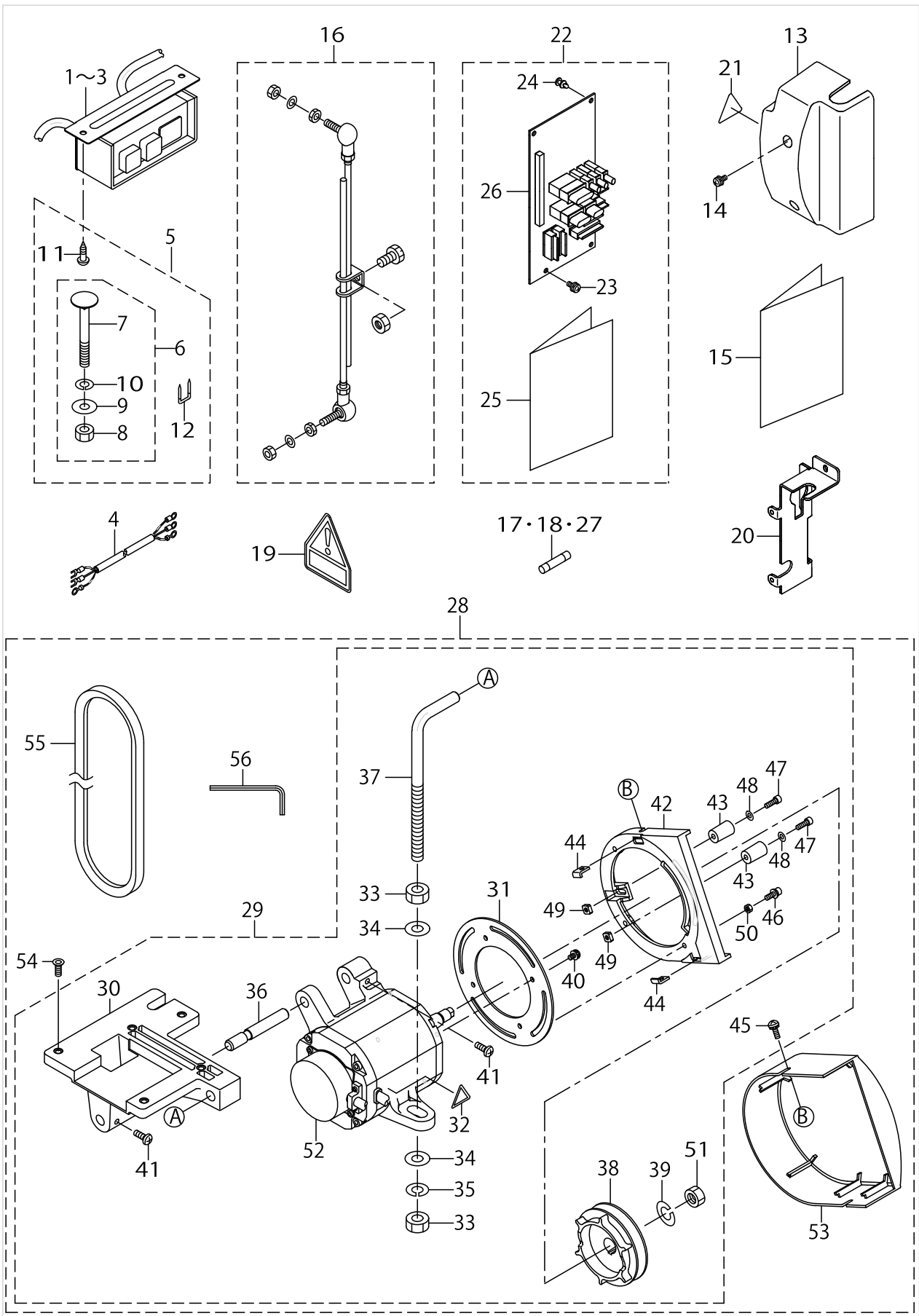
PSC UNIT COMPONENTS (TYPE LH)



PSC UNIT COMPONENTS (TYPE LH)

No.	Parts No.	Parts name	Remarks	Level	Cons	Qty
47	SL4041081SC	SCREW M4 L=10		*		8
48	SL4041681SC	SCREW M4 L=16		*		3
49	SL4041081SC	SCREW M4 L=10		*		1
50	SL4041091SC	SCREW M4 L=10		*		3
51	SM9081653SC	SCREW M8 L=16		*		4
52	WP0841601SC	WASHER 8.4X17.4X1.6		*		4
53	SL4040881SC	SCREW M4 L=8		*		2
54	SL4041691SC	SCREW M4 L=16		*		2
55	WS0820002KN	SPRING WASHER M8		*		4
56	SL4041681SC	SCREW M4 L=16		*		2
57	KX000000190	LOCKING WIRE SADDLE		*		1
58	E3724715000	VCS STUD A		*		3
59	40006130	SOLENOID_CORD_A_ASSY		*		1
60	40006131	RELAY_CORD_A_ASSY		*		1
61	40006129	AC_POWER_SUPPLY_CORD_A		*		1
62	KX000000210	SADDLE TYPE TIE MOUNT		*		1
63	SM4050801SC	SCREW M5X0.8 L=8		*		1
64	KX000000200	LOCKING WIRE SADDLE		*		2
65	SL4041895SC	SCREW		*		1
66	40012008	PSC_UNIT_CABLE_A_ASSY	FOR EXPORT 200~240V 3φ	*		1
67	40012009	PSC_UNIT_CABLE_B_ASSY	FOR EXPORT 200~240V 1φ	*		1
68	HX003390000	STUD		*		4

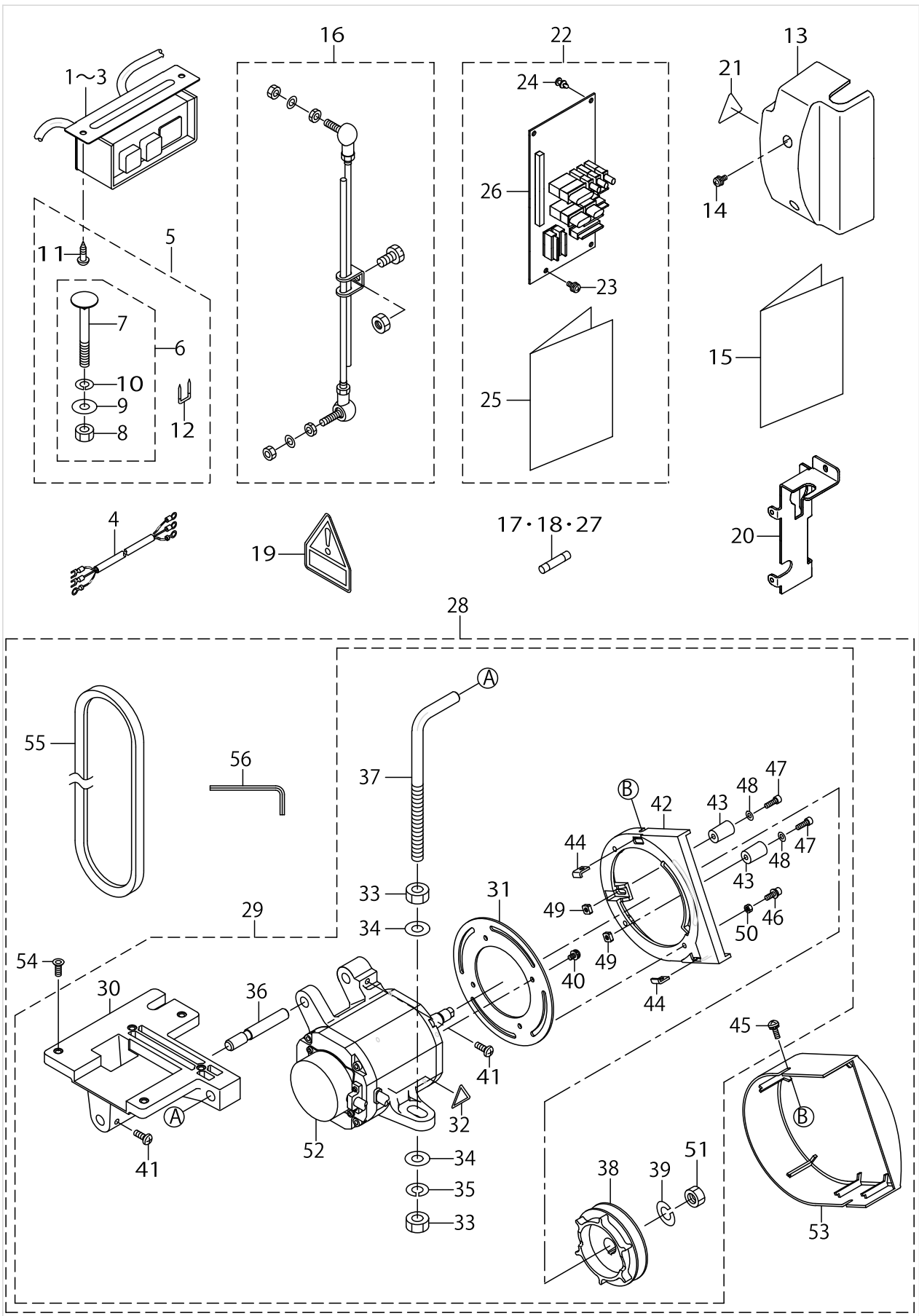
ACCESSORIE PART COMPONENTS



## ACCESSORIE PART COMPONENTS

No.	Parts No.	Parts name	Remarks	Level	Cons	Qty
1	M6101471AA0	POWER SWITCH A ASM.	FOR 200~240V 3 φ			1
2	M6101471CA0	POWER SWITCH C ASM.	FOR 200~240V 1 φ			1
3	M6101471BA0	POWER SOURCE SWITCH B ASM.	FOR 100~120V 1 φ			1
4	M6102461DAA	AC INPUT CABLE ASM.(CE)	FOR CE 220~240V 1 φ			1
5	M4401471AA0	BOX ACCESSORIE PART A ASM.	FOR EXCEPT CE			1
6	M4401471BA0	BOX ACCESSORIE PART B ASM.		*		1
7	MTSHJ100003	BOLT		*		3
8	NM6080002SC	NUT M8		*		3
9	WP0851846SC	WASHER 8.5X22.0X1.8		*		3
10	WS0820002KR	SPRING WASHER, M8		*		3
11	SK3512001SE	WOOD SCREW D=5.1 L=20		*		2
12	MA011532000	STAPLE		*		5
13	40006106	POWER_COVER	FOR CE 220~240V 1 φ			1
14	SL4041081SC	SCREW M4 L=10	FOR CE 220~240V 1 φ			2
15	40006220	SC-910 INSTRUCTION MANUAL				1
16	M4501471AA0	CONNECTING ROD A ASM.				1
17	KF000000030	FUSE 6.3A				1
18	HF0013020P0	FUSE 2A				1
19	CM300400701	VOLTAGE CAUTION LABEL				1
20	40006107	POWER_COVER_BASE	FOR CE 220~240V 1 φ			1
21	CM300100001	LABEL	FOR CE 220~240V 1 φ			1
22	40006080	IO UNIT A				1
23	SL4041081SC	SCREW M4 L=10		*		3
24	HX00453000A	MINI CARD SPACER		*		1
25	40006081	INSTRUCTION MANUAL		*		1
26	40006077	IO_PCB_A_ASSY		*		1
27	KF000000080	FUSE 3.15A				1
28	40006180	M91				1
29	40006125	MOTOR_UNIT		*		1
30	40006097	MOTOR_BASE		*		1
31	40006102	PULLEY_COVER_BRACKET		*		1
32	CM300300002	LABEL2 (25)		*		1
33	NM6100011SF	NUT M10		*		2
34	WP1052001SE	WASHER 10.5X21X2		*		2
35	WS1020002KR	SPRING WASHER, M10		*		1
36	M4201461000	MOTOR SUPPORT SHAFT		*		1
37	M4202461000	MOTOR SUPPORT BOLT		*		1
38	MTSP0070A00	MOTOR PULLEY		*		1
39	WS1002560KR	SPRING WASHER 10X18X2.5		*		1
40	SL4040841SE	SCREW M4 L=8		*		4
41	SM4051401SE	SCREW M5 L=14		*		2
42	40006100	PULLEY_COVER_A		*		1
43	40006098	SAFTY_PIN		*		2
44	40006111	COVER_PLATE		*		2
45	SL4041291SC	SCREW M4 L=12		*		2
46	SL6041292TN	SCREW		*		3
47	SM6041202TP	SCREW M4X0.7 L=12		*		2

ACCESSORIE PART COMPONENTS



ACCESSORIE PART COMPONENTS

No.	Parts No.	Parts name	Remarks	Level	Cons	Qty
48	WP0430800SC	WASHER M4		*		2
49	E2292802000	RAIL NUT		*		2
50	NM6040000SN	NUT M4		*		3
51	NM6100011SF	NUT M10		*		1
52	40018866	MOTOR F ASM.		*		1
53	40006101	PULLEY_COVER_B		*		1
54	SM1051452TN	PLATE SCREW		*		5
55	MTJVM00380A	V-BELT		*		1
56	J106600000D	HEXAGONAL WRENCH KEY		*		1

## HOW TO MAKE USE OF THIS PARTS LIST

1.As to "#01" and "#02" refer to the "Note" given at the bottom of the respective pages.

2.Codes on the "Qty" column

- Each numeral indicates the number of parts required.
- "0.1" and "2.5" indicate the length (in meters) of the respective parts.

3.Parentheses mean that the corresponding part is a subpart that constructs an assembly part.

4.Dotted lines on the Figures indicate assembly parts.

1. リストページの# 0 1、# 0 2の印は、ページ下の"注記"の説明を参照下さい。
2. 数量欄の数字は、個数を表し、0. 1、2. 5等の数値は、長さ（単位メートル）を表します。
3. 数量欄の（ ）は、組部品を構成している子部品であることを意味します。
4. イラストページの-----枠は、組構成であることを意味します。

NUMERICAL INDEX OF PARTS

PART NO	PAGE	REF NO.	PART NO	PAGE	REF NO.	PART NO	PAGE	REF NO.
40006038	2	5	40006136	2	40	40043864	6	13
40006057	2	6	40006136	6	36	40043865	6	19
40006057	6	6	40006139	2	11	CM300100001	10	21
40006077	10	26	40006139	6	11	CM300100402	2	15
40006080	10	22	40006160	2	1~4	CM300100402	6	14
40006081	10	25	40006160	6	1~4	CM300300002	10	32
40006091	2	29	40006162	2	1~4	CM300400701	10	19
40006091	6	25	40006164	2	1~4	E2292802000	12	49
40006092	2	26	40006180	10	28	E3724715000	4	62
40006092	6	22	40006202	2	32	E3724715000	8	58
40006093	2	14	40006202	6	28	EA9500B0100	2	38
40006095	2	9	40006204	2	35	EA9500B0100	6	34
40006095	6	9	40006204	6	31	HF0013020P0	10	17·18·27
40006096	2	8	40006205	2	36	HX00222000B	2	23
40006096	6	8	40006205	6	32	HX003390000	2	24
40006097	10	30	40006206	2	39	HX003390000	8	68
40006098	10	43	40006206	6	35	HX00453000A	10	24
40006100	10	42	40006207	2	41	J106600000D	12	56
40006101	12	53	40006207	6	37	KF000000030	10	17·18·27
40006102	10	31	40006208	2	42	KF000000080	10	17·18·27
40006103	2	20	40006208	6	38	KX000000190	4	61
40006104	2	33	40006209	2	43	KX000000190	8	57
40006104	6	29	40006209	6	39	KX000000200	4	68
40006105	2	10	40006211	2	44	KX000000200	8	64
40006105	6	10	40006211	6	40	KX000000210	4	66
40006106	10	13	40006212	2	45	KX000000210	8	62
40006107	10	20	40006212	6	41	KX000000220	2	28
40006111	10	44	40006220	10	15	KX000000220	6	24
40006112	2	34	40012008	4	70	KX000000230	4	49
40006112	6	30	40012008	8	66	KX000000230	6	45
40006123	2	12·13	40012009	4	71	M4201461000	10	36
40006124	2	12·13	40012009	8	67	M4202461000	10	37
40006125	10	29	40017139	2	30	M4401471AA0	10	5
40006128	2	31	40017139	6	26	M4401471BA0	10	6
40006128	6	27	40018664	2	18	M4501471AA0	10	16
40006129	4	65	40018674	2	19	M6101471AA0	10	1~3
40006129	8	61	40018866	12	52	M6101471BA0	10	1~3
40006130	4	63	40034992	6	1~4	M6101471CA0	10	1~3
40006130	8	59	40034993	6	1~4	M6102461DAA	10	4
40006131	4	64	40034994	6	1~4	M8002430000	2	17
40006131	8	60	40035000	6	5	M8002430000	6	16
40006134	2	7	40037480	6	21	MA011532000	10	12
40006134	6	7	40040166	6	17·18	MTJVM00380A	12	55
40006135	2	37	40040176	6	17·18	MTSHJ100003	10	7
40006135	6	33	40043863	6	12	MTSP0070A00	10	38



NUMERICAL INDEX OF PARTS

PART NO	PAGE	REF NO.	PART NO	PAGE	REF NO.
NM6040000SN	12	50	WP0851846SC	10	9
NM6040001SC	2	25	WP1052001SE	10	34
NM6080002SC	10	8	WS0820002KN	4	59
NM6100011SF	10	51	WS0820002KN	8	55
NM6100011SF	12	51	WS0820002KR	10	10
SK3512001SE	10	11	WS1002560KR	10	39
SL4040841SE	10	40	WS1020002KR	10	35
SL4040881SC	2	57			
SL4040881SC	4	57			
SL4040881SC	6	53			
SL4040881SC	8	53			
SL4041081SC	2	53			
SL4041081SC	4	53			
SL4041081SC	6	49			
SL4041081SC	8	49			
SL4041081SC	10	23			
SL4041091SC	4	54			
SL4041091SC	8	50			
SL4041291SC	2	22			
SL4041291SC	10	45			
SL4041681SC	4	60			
SL4041681SC	8	56			
SL4041691SC	2	58			
SL4041691SC	4	58			
SL4041691SC	6	54			
SL4041691SC	8	54			
SL4041895SC	4	69			
SL4041895SC	8	65			
SL6041292TN	10	46			
SM1051452TN	12	54			
SM4030801SC	2	46			
SM4030801SC	6	42			
SM4050801SC	4	67			
SM4050801SC	8	63			
SM4051401SE	10	41			
SM6041202TP	10	47			
SM8040802TP	4	47			
SM8040802TP	6	43			
SM9081653SC	4	55			
SM9081653SC	8	51			
SV4030601SR	4	48			
SV4030601SR	6	44			
WP0430800SC	12	48			
WP0841601SC	4	56			
WP0841601SC	8	52			