

MODEL : MO-6000/LB-3,LB-4

List No : 1367-00

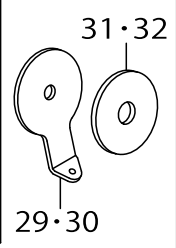
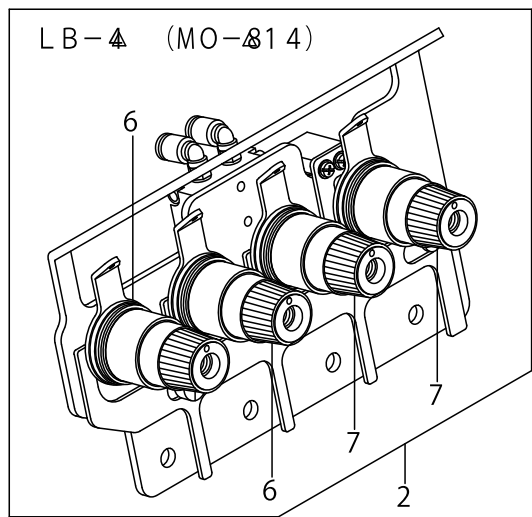
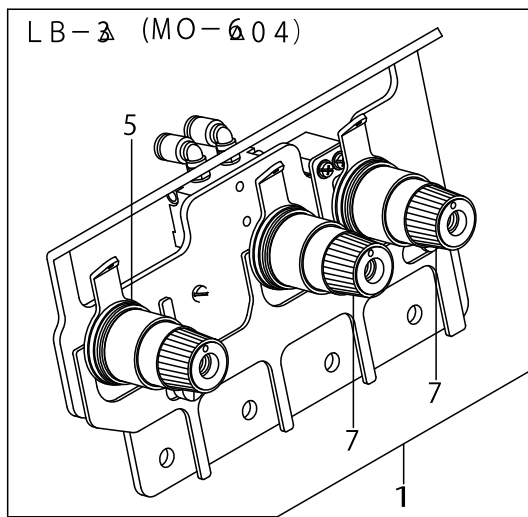
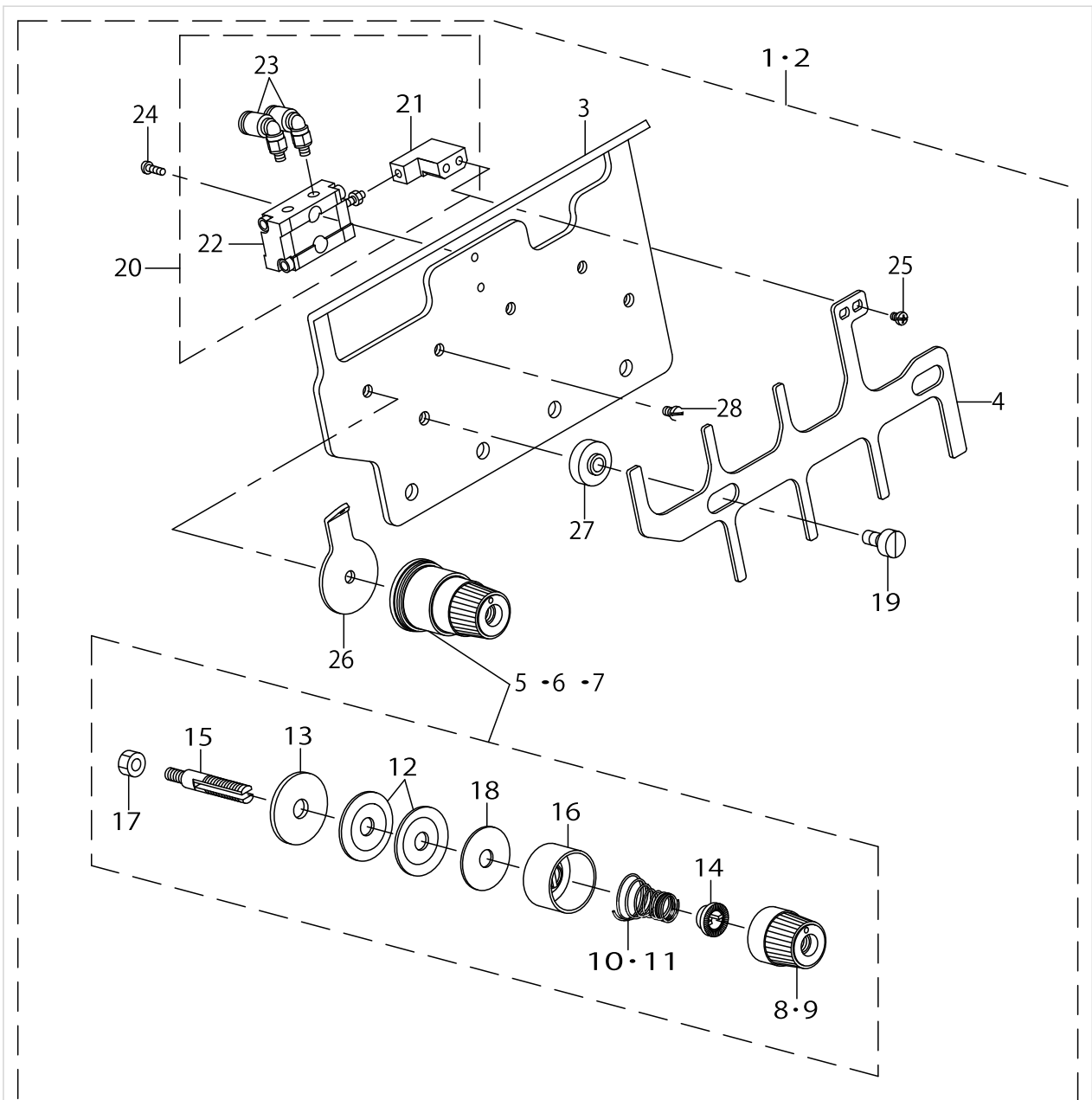
PARTS LIST

Published:09/10/2017

CONTENTS

SEMI-AUTOMATIC CHAIN-OFF THREAD ROLL-IN DEVICE (1).....	1
SEMI-AUTOMATIC CHAIN-OFF THREAD ROLL-IN DEVICE (2).....	3
SEMI-AUTOMATIC CHAIN-OFF THREAD ROLL-IN DEVICE (3).....	7
SEMI-AUTOMATIC CHAIN-OFF THREAD ROLL-IN DEVICE (4).....	11
HOW TO MAKE USE OF THIS PARTS LIST	13

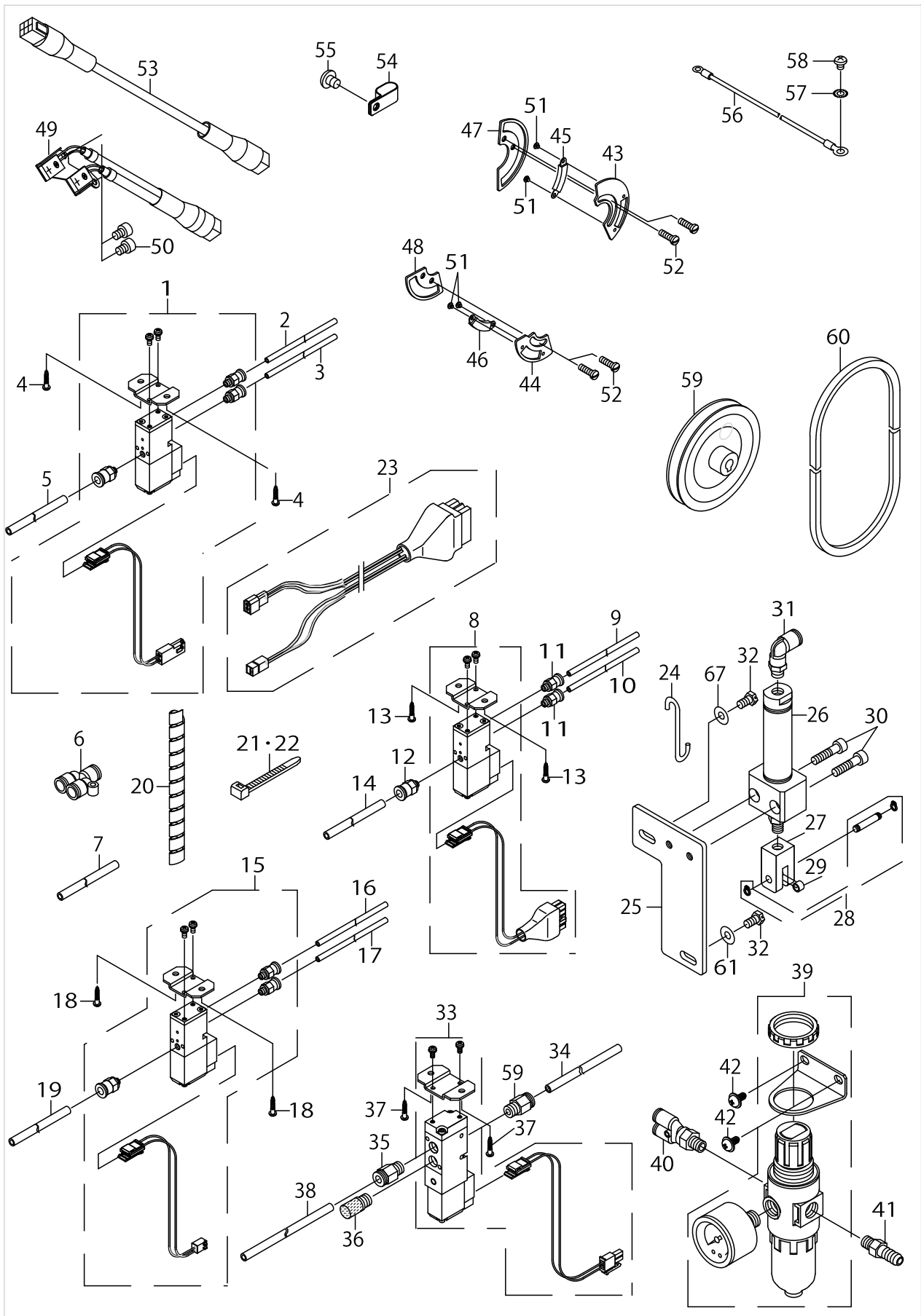
SEMI-AUTOMATIC CHAIN-OFF THREAD ROLL-IN DEVICE (1)



SEMI-AUTOMATIC CHAIN-OFF THREAD ROLL-IN DEVICE (1)

No.	Parts No.	Parts name	Remarks	Level	Cons	Qty
1	GLB030010A0	THREAD TENSION PLATE ASM.	FOR LB-3△			1
2	GLB040010A0	THREAD TENSION PLATE ASM.	FOR LB-4△			1
3	GLB03002000	THREAD TENSION PLATE		*		1
4	GLB03005000	DISK RISING PLATE		*		1
5	GLB030100A0	THREAD TENSION SPRING COMPL.	FOR LB-3△	*		1
6	GLB030100A0	THREAD TENSION SPRING COMPL.	FOR LB-4△	*		2
7	GLB030080A0	THREAD TENSION SPRING COMPL.		*		2
8	13138706	THREAD TENSION KNOB, BLUE		*		1
9	13137708	THREAD TENSION KNOB, RED		*		1
10	13138805	THREAD TENSION SPRING, BLUE		*		1
11	13137807	THREAD TENSION SPRING, RED		*		1
12	13138201	THREAD TENSION DISK		*		2
13	B3120352000	THREAD TENSION SPRING FELT		*		1
14	13137906	SPRING BUSHING		*		1
15	13138904	THREAD TENSION BAR		*		1
16	13137609	THREAD TENSION DISK PRESSER		*		1
17	NS6110420SP	NUT 11/64-40		*		1
18	13138102	THREAD TENSION SPRING FELT		*		1
19	SS6120930TP	SCREW 3/16-28 L=9		*		2
20	GLB030060A0	THREAD RELEASE SYLINDER ASM.		*		1
21	GLB03006000	THREAD RELEASE SYLINDER ARM		*		1
22	PA0600509A0	AIR SYLINDER		*		1
23	PJ304040504	ELBOW UNION		*		2
24	SM4031001SC	SCREW M3X0.5 L=10		*		2
25	SM4030655SP	SCREW		*		2
26	GLB03003000	THREAD GUIDE		*		1
27	GLB03004000	DISK RISING COLLAR		*		2
28	SS7110710SL	SCREW 11/64-40 L=7.0	FOR LB-3△	*		1
29	GLB03003000	THREAD GUIDE	FOR LB-3△			3
30	GLB03003000	THREAD GUIDE	FOR LB-4△			4
31	B3120352000	THREAD TENSION SPRING FELT	FOR LB-3△			3
32	B3120352000	THREAD TENSION SPRING FELT	FOR LB-4△			4

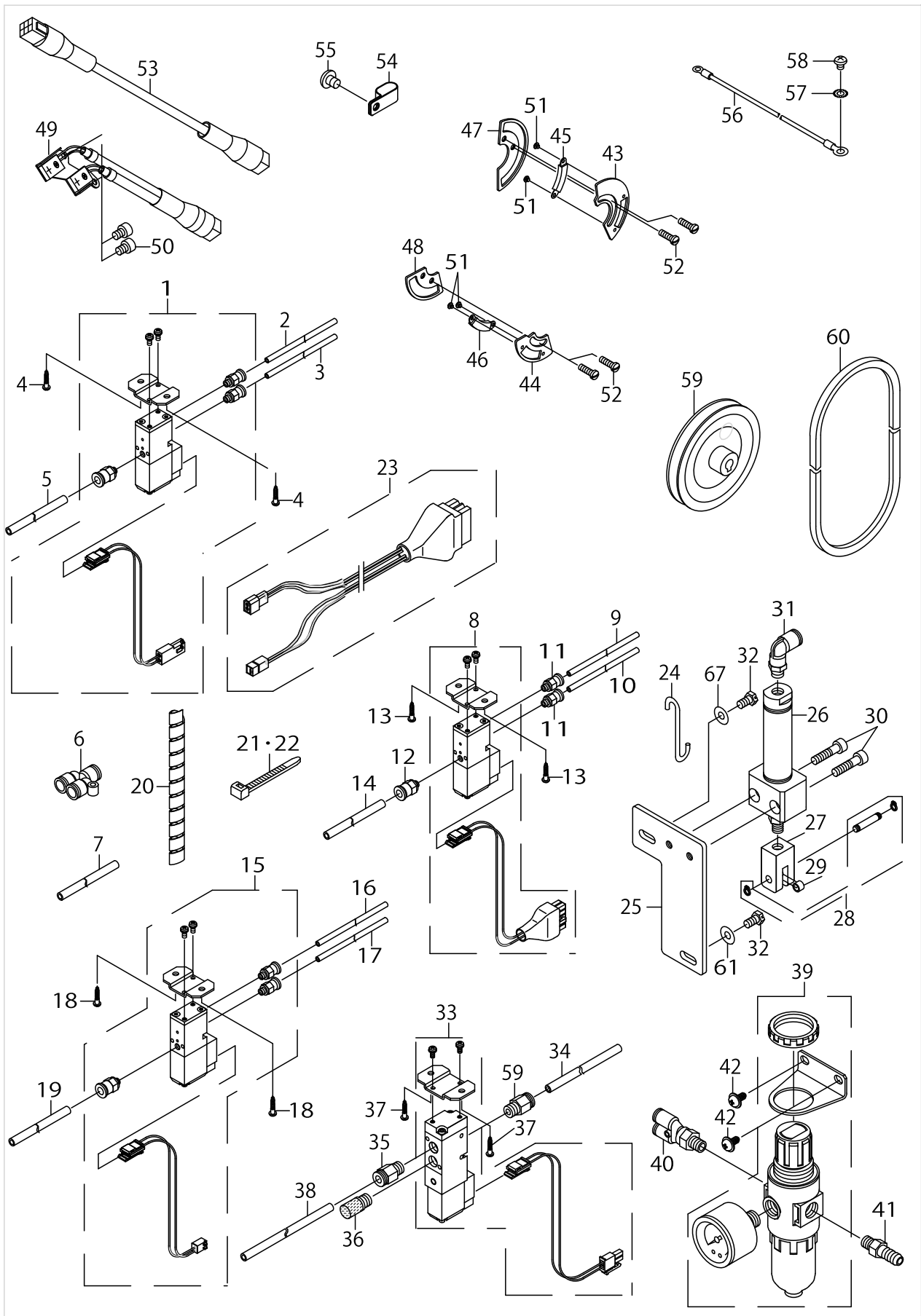
SEMI-AUTOMATIC CHAIN-OFF THREAD ROLL-IN DEVICE (2)



SEMI-AUTOMATIC CHAIN-OFF THREAD ROLL-IN DEVICE (2)

No.	Parts No.	Parts name	Remarks	Level	Cons	Qty
1	GLB020160A0	INNER CLICK SOLENOID VALVE	FOR LB-4△			1
2	BT0400251EB	URETHANE HOSE, BLACK	FOR LB-4△			0.7
3	BT0400251EB	URETHANE HOSE, BLACK	FOR LB-4△			0.7
4	SK3311601SE	WOOD SCREW D=3.1 L=16	FOR LB-4△			2
5	BT0600401EB	TUBE	FOR LB-4△			0.4
6	PJ308060003	Y UNION	FOR LB-4△			1
7	BT0600401EB	TUBE	FOR LB-4△			0.4
8	MAZ185130AA	THREAD RELEASE SOLENOID VALVE	FOR LB-3△			1
9	BT0400251EB	URETHANE HOSE, BLACK	FOR LB-3△			1
10	BT0400251EB	URETHANE HOSE, BLACK	FOR LB-3△			1
11	PJ301040502	HALF UNION 4XM5	FOR LB-3△			2
12	PJ301060503	HALF UNION	FOR LB-3△			1
13	SK3311601SE	WOOD SCREW D=3.1 L=16	FOR LB-3△			2
14	BT0600401EB	TUBE	FOR LB-3△			0.8
15	GLB020170A0	THREAD RELEASE	FOR LB-4△			1
16	BT0400251EB	URETHANE HOSE, BLACK	FOR LB-4△			1
17	BT0400251EB	URETHANE HOSE, BLACK	FOR LB-4△			1
18	SK3311601SE	WOOD SCREW D=3.1 L=16	FOR LB-4△			2
19	BT0600401EB	TUBE	FOR LB-4△			0.4
20	G5182120000	SPIRAL TUBE				0.5
21	EA9500B0100	CABLE BAND	FOR LB-3△			4
22	EA9500B0100	CABLE BAND	FOR LB-4△			5
23	GLB020180A0	CORD ASM.	FOR LB-4△			1
24	11819414	LIFTING HOOK	FOR LB-3D6904R, LB-4D6914R			1
25	GBT01083000	CYLINDER PLATE				1
26	PA2002514A0	AIR CYLINDER				1
27	GBT01084000	KNUCKLE				1
28	GBT01085000	KNUCKLE PIN				1
29	GBT01086000	KNUCKLE ROLLER				1
30	SM6062502TP	SCREW M6 L=25				2
31	PJ304065101	ELBOW UNION 6XPT1/8				1
32	SS9151120CP	SCREW 15/64-28 L=11				2
33	MAZ185140AA	PRESSER LIFTING SOLENOID VALVE				1
34	BT0600401EB	TUBE				1
35	PJ301065102	QUICK COUPLING				2
36	PX055104000	SILENCER (PT1/8)				1
37	SK3311601SE	WOOD SCREW D=3.1 L=16				2
38	BT0600401EB	TUBE				0.8
39	PF0552040A0	FILTER REGULATOR ASM.				1
40	PJ308065202	Y-UNION				1
41	F1021003000	HOSE JOINT				1
42	GMD01080000	SCREW M5 L=10				1
43	GSY30002000	BRACKET A				1
44	GSY30003000	BRACKET B				1
45	GSY30004AA0	MAGNET CASE ASM., A				1
46	GSY30004BA0	MAGNET CASE ASM., B				1
47	GSY30005000	POSITION PLATE A				1

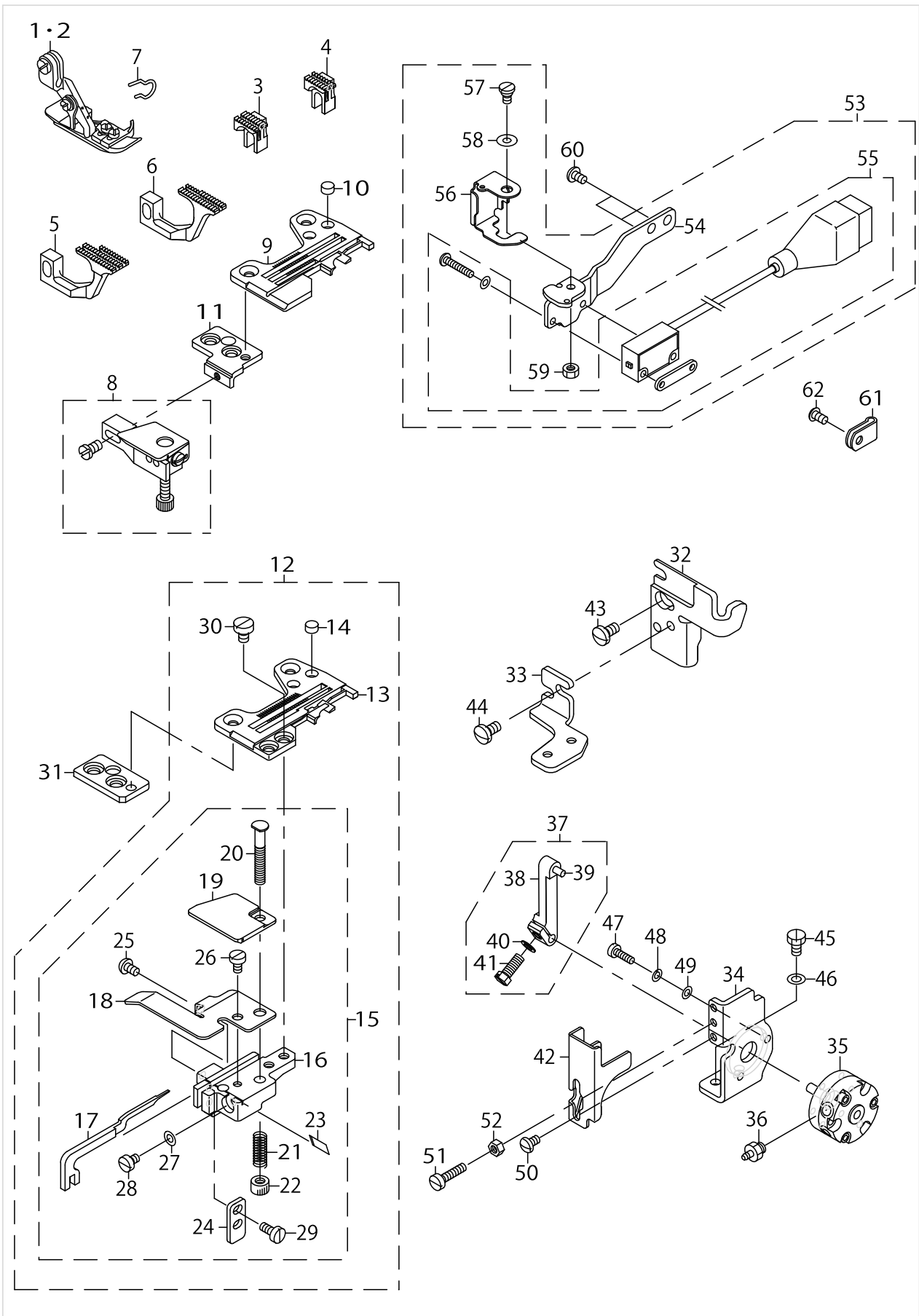
SEMI-AUTOMATIC CHAIN-OFF THREAD ROLL-IN DEVICE (2)



SEMI-AUTOMATIC CHAIN-OFF THREAD ROLL-IN DEVICE (2)

No.	Parts No.	Parts name	Remarks	Level	Cons	Qty
48	GSY30006000	POSITION PLATE B				1
49	GSY300100A0	SYNCHRO SENSER ASM.				1
50	SS7090410SP	SCREW 9/64-40 L= 3.5				2
51	SS6060220SP	SCREW 3/32-56 L= 2.0				4
52	SS7111410TP	SCREW 11/64-40 L=14				4
53	MAZ185160A0	SYNCHRONIZER RELAY CORD ASM.				1
54	D2112555B00	CORD HOLDER, LARGE				1
55	SS4150715SP	SCREW 15/64-28 L=7				1
56	M90195800A0	EARTH CABLE ASM.				1
57	WT0430002KN	WASHER M4				1
58	SM4040501SN	SCREW M4X0.7 L=5				1
59	MTSP01200A0	MOTOR PULLEY ASM. P.C.D. 120				1
60	MTJVM003600	V-BELT, 36 INCH				1
61	WP0611626SP	WASHER 15X6X1.6				2

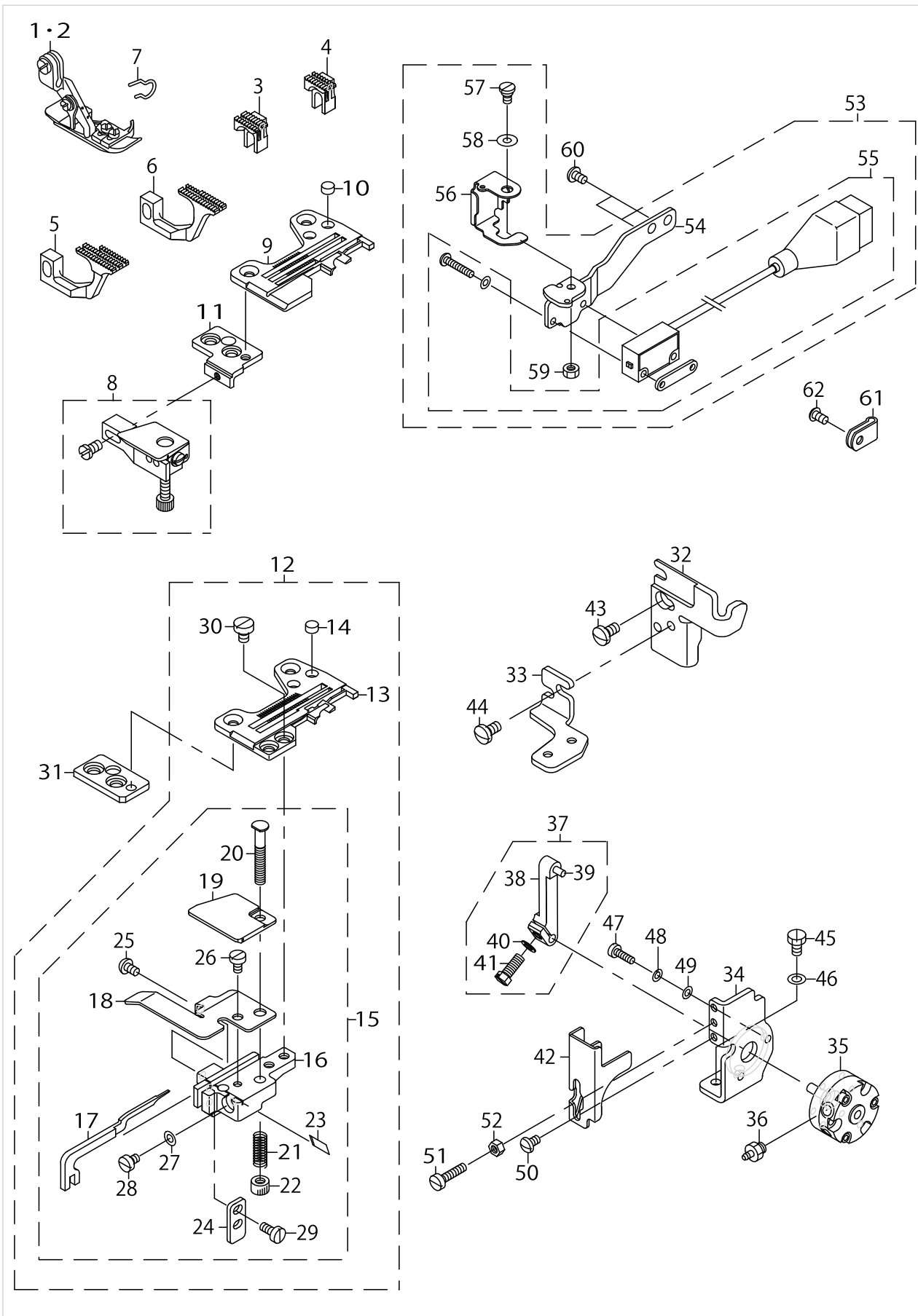
SEMI-AUTOMATIC CHAIN-OFF THREAD ROLL-IN DEVICE (3)



SEMI-AUTOMATIC CHAIN-OFF THREAD ROLL-IN DEVICE (3)

No.	Parts No.	Parts name	Remarks	Level	Cons	Qty
1	12151650	PRESSER FOOT ASM.	FOR LB-3B6△04S			1
2	12151551	PRESSER FOOT ASM.	FOR LB-4B6△14S			1
3	11882206	MAIN FEED DOG	FOR LB-3△			1
4	11882107	MAIN FEED DOG	FOR LB-4△			1
5	12174801	AUXILIARY FEED DOG	FOR LB-3△			1
6	12175006	AUXILIARY FEED DOG	FOR LB-4△			1
7	13178306	FINGER GUARD	FOR LB-3B6△04S LB-4B6△14S			1
8	MAZ082000C0	ROLLING INDEVICE ASM.	FOR LB-3△			1
9	R4300J2EE00	THROAT PLATE	FOR LB-3△			1
10	11806304	PLUG	FOR LB-3△			2
11	MAZ17301000	THROAT PLATE BASE(A)	FOR LB-3△			1
12	GLB020010A0	CHAIN OFF DEVICE A ASM.	FOR LB-4△			1
13	R4205J2ED00	THROAT PLATE		*		1
14	11806304	PLUG		*		2
15	GLB020020A0	CHAIN OFF DEVICE ASM.		*		1
16	GLB02002000	CHAIN OFF BASE		*		1
17	GLB02003000	INNER CLICK		*		1
18	GLB02004000	CHAIN OFF GUIDE PLATE		*		1
19	GLB02005000	CHAIN OFF PRESSER PLATE		*		1
20	GLB02006000	CHAIN OFF ADJUSTING SHAFT		*		1
21	B4110522000	SPRING		*		1
22	MAZ08205000	REAR PRESSER REGULATING KNOB		*		1
23	MAZ08211000	KNIFE		*		1
24	GLB02007000	DRIVING STOPPER		*		1
25	SS4090610SP	SCREW 9/64-40 L=6		*		1
26	SS6090630TP	SCREW 9/64-40 L=6		*		1
27	WP0371026SD	WASHER 3.7X7X1		*		1
28	SS6090520SP	SCREW 9/64-40 L= 5.0		*		1
29	SS6090810SP	SCREW 9/64-40 L= 7.5		*		2
30	SS6110610TP	SCREW 11/64-40 L=6		*		2
31	GLB02008000	THROAT PLATE BASE	FOR LB-4△			1
32	GLB02009000	CLOTH WASTE COVER LEFT	FOR LB-4△			1
33	GLB02010000	INNER CLICK DRIVING BASE A	FOR LB-4△			1
34	GLB02011000	INNER CLICK DRIVING BASE B	FOR LB-4△			1
35	PA800019000	AIR CYLINDER	FOR LB-4△			1
36	PJ032059002	JOINT	FOR LB-4△			2
37	GLB020120A0	INNER CLICK DRIVING ARM ASM.	FOR LB-4△			1
38	GLB02012000	INNER CLICK DRIVING ARM		*		1
39	B3215470000	PIN		*		1
40	WP0460556SD	WASHER 4.6X7.5X0.5		*		1
41	SS9111020TP	SCREW 11/64-40 L=10		*		1
42	GLB02013000	INNER CLICK DRIVING ARM COVER	FOR LB-4△			1
43	SS7110840SP	SCREW 11/64-40 L=7.8	FOR LB-4△			1
44	SS7110840SP	SCREW 11/64-40 L=7.8	FOR LB-4△			2
45	SM9040700SP	HEXAGONAL BOLT	FOR LB-4△			2
46	WP0430800SC	WASHER M4	FOR LB-4△			2

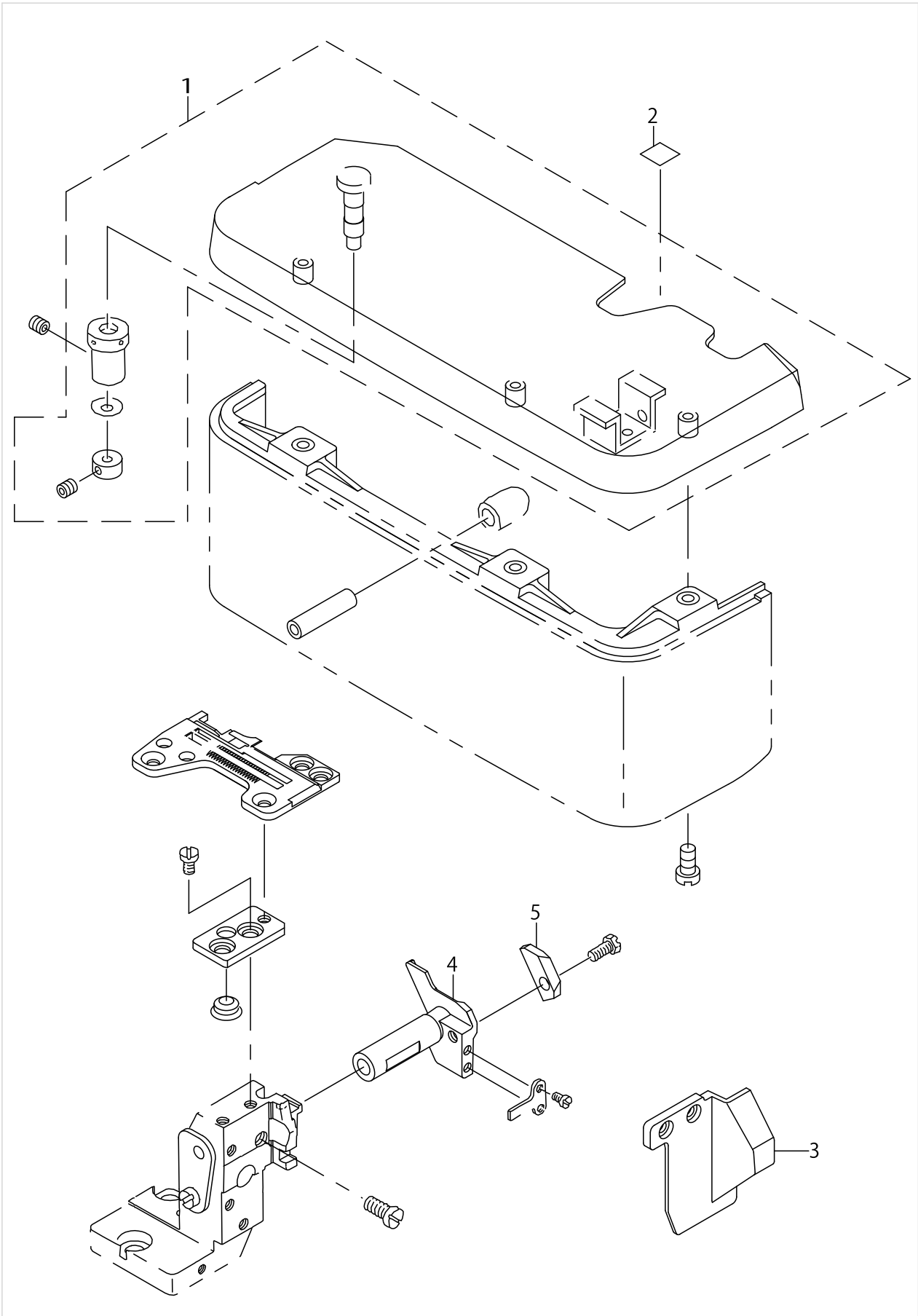
SEMI-AUTOMATIC CHAIN-OFF THREAD ROLL-IN DEVICE (3)



SEMI-AUTOMATIC CHAIN-OFF THREAD ROLL-IN DEVICE (3)

No.	Parts No.	Parts name	Remarks	Level	Cons	Qty
47	SM6031010SC	SCREW M3X0.5 L=10	FOR LB-4Δ			2
48	WS0310002KN	SPRING WASHER M3	FOR LB-4Δ			2
49	WP0320500SC	WASHER M3	FOR LB-4Δ			2
50	SS4090610SP	SCREW 9/64-40 L=6	FOR LB-4Δ			2
51	SS6091510SP	SCREW 9/64-40 L=15.0	FOR LB-4Δ			1
52	NS6090310SP	NUT 9/64-40	FOR LB-4Δ			1
53	GLB030110A0	CLOTH SENSOR ASM.				1
54	GLB03011000	CLOTH SENSOR FITTING PLATE		*		1
55	GLB020190A0	SENSOR ASM.		*		1
56	GLB02021000	CLOTH SENSOR BLIND		*		1
57	SD0500204TP	HINGE SCREW		*		1
58	WZ054031000	WAVED WASHER		*		1
59	NS6090310SP	NUT 9/64-40		*		1
60	SS4090610SP	SCREW 9/64-40 L=6				2
61	G5066110000	CORD HOLDER				1
62	SS3090710TP	SCREW 9/64-40 L=7				1

SEMI-AUTOMATIC CHAIN-OFF THREAD ROLL-IN DEVICE (4)



SEMI-AUTOMATIC CHAIN-OFF THREAD ROLL-IN DEVICE (4)

No.	Parts No.	Parts name	Remarks	Level	Cons	Qty
1	11922556	CLOTH BASE ASM.				1
2	MAZ18511000	REFLECTING SHEET				1
3	GLB03007000	SAFETY PLATE				1
4	GLB02014000	LOWER KNIFE SLIDE STUD	FOR LB-4Δ			1
5	GLB02015000	LOWER KNIFE PRESSER PLATE	FOR LB-4Δ			1

HOW TO MAKE USE OF THIS PARTS LIST

1.As to "#01" and "#02" refer to the "Note" given at the bottom of the respective pages.

2.Codes on the "Qty" column

- Each numeral indicates the number of parts required.
- "0.1" and "2.5" indicate the length (in meters) of the respective parts.

3.Parentheses mean that the corresponding part is a subpart that constructs an assembly part.

4.Dotted lines on the Figures indicate assembly parts.

1. リストページの# 0 1、# 0 2の印は、ページ下の"注記"の説明を参照下さい。
2. 数量欄の数字は、個数を表し、0. 1、2. 5等の数値は、長さ（単位メートル）を表します。
3. 数量欄の（ ）は、組部品を構成している子部品であることを意味します。
4. イラストページの-----枠は、組構成であることを意味します。

NUMERICAL INDEX OF PARTS

PART NO	PAGE	REF NO.	PART NO	PAGE	REF NO.	PART NO	PAGE	REF NO.
11806304	8	14	GLB02012000	8	38	PA2002514A0	4	26
11819414	4	24	GLB020120A0	8	37	PA800019000	8	35
11882107	8	4	GLB02013000	8	42	PF0552040A0	4	39
11882206	8	3	GLB02014000	12	4	PJ032059002	8	36
11922556	12	1	GLB02015000	12	5	PJ301040502	4	11
12151551	8	1·2	GLB020160A0	4	1	PJ301060503	4	12
12151650	8	1·2	GLB020170A0	4	15	PJ301065102	4	35
12174801	8	5	GLB020180A0	4	23	PJ304040504	2	23
12175006	8	6	GLB020190A0	10	55	PJ304065101	4	31
13137609	2	16	GLB02021000	10	56	PJ308060003	4	6
13137708	2	8·9	GLB030010A0	2	1·2	PJ308065202	4	40
13137807	2	10·11	GLB03002000	2	3	PX055104000	4	36
13137906	2	14	GLB03003000	2	29·30	R4205J2ED00	8	13
13138102	2	18	GLB03004000	2	27	R4300J2EE00	8	9
13138201	2	12	GLB03005000	2	4	SD0500204TP	10	57
13138706	2	8·9	GLB03006000	2	21	SK3311601SE	4	37
13138805	2	10·11	GLB030060A0	2	20	SM4030655SP	2	25
13138904	2	15	GLB03007000	12	3	SM4031001SC	2	24
13178306	8	7	GLB030080A0	2	7	SM4040501SN	6	58
B3120352000	2	31·32	GLB030100A0	2	6	SM6031010SC	10	47
B3215470000	8	39	GLB03011000	10	54	SM6062502TP	4	30
B4110522000	8	21	GLB030110A0	10	53	SM9040700SP	8	45
BT0400251EB	4	17	GLB040010A0	2	1·2	SS3090710TP	10	62
BT0600401EB	4	38	GMD01080000	4	42	SS4090610SP	8	60
D2112555B00	6	54	GSY30002000	4	43	SS4090610SP	10	60
EA9500B0100	4	21·22	GSY30003000	4	44	SS4150715SP	6	55
F1021003000	4	41	GSY30004AA0	4	45	SS6060220SP	6	51
G5066110000	10	61	GSY30004BA0	4	46	SS6090520SP	8	28
G5182120000	4	20	GSY30005000	4	47	SS6090630TP	8	26
GBT01083000	4	25	GSY30006000	6	48	SS6090810SP	8	29
GBT01084000	4	27	GSY300100A0	6	49	SS6091510SP	10	51
GBT01085000	4	28	M90195800A0	6	56	SS6110610TP	8	30
GBT01086000	4	29	MAZ082000C0	8	8	SS6120930TP	2	19
GLB020010A0	8	12	MAZ08205000	8	22	SS7090410SP	6	50
GLB02002000	8	16	MAZ08211000	8	23	SS7110710SL	2	28
GLB020020A0	8	15	MAZ17301000	8	11	SS7110840SP	8	44
GLB02003000	8	17	MAZ18511000	12	2	SS7111410TP	6	52
GLB02004000	8	18	MAZ185130AA	4	8	SS9111020TP	8	41
GLB02005000	8	19	MAZ185140AA	4	33	SS9151120CP	4	32
GLB02006000	8	20	MAZ185160A0	6	53	WP0320500SC	10	49
GLB02007000	8	24	MTJVM003600	6	60	WP0371026SD	8	27
GLB02008000	8	31	MTSP01200A0	6	59	WP0430800SC	8	46
GLB02009000	8	32	NS6090310SP	10	59	WP0460556SD	8	40
GLB02010000	8	33	NS6110420SP	2	17	WP0611626SP	6	61
GLB02011000	8	34	PA0600509A0	2	22	WS0310002KN	10	48

NUMERICAL INDEX OF PARTS

PART NO	PAGE	REF NO.
WT0430002KN	6	57
WZ054031000	10	58