

MODEL : AK-108/AK-109

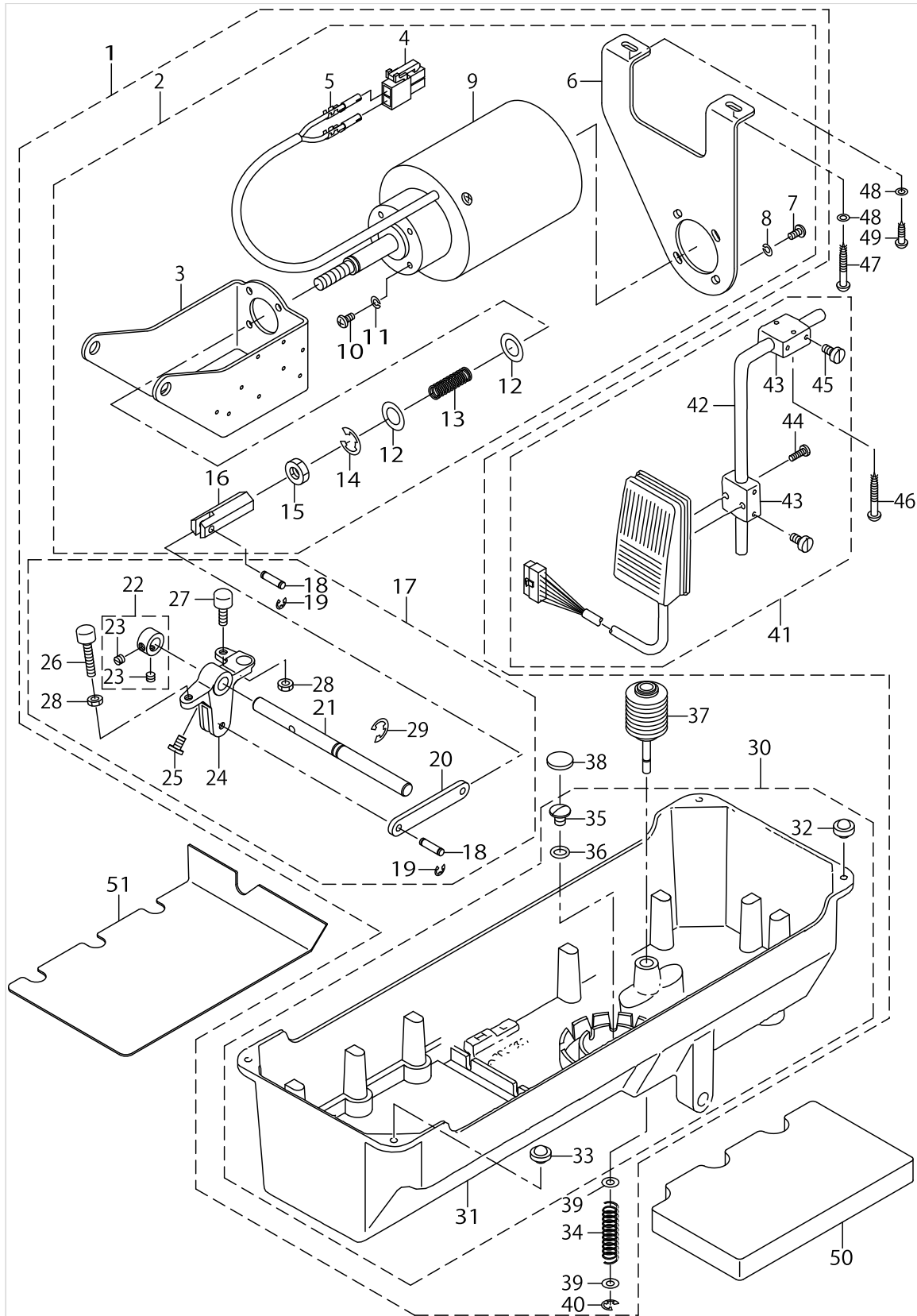
List No : 1092-00

PARTS LIST

Published:09/10/2017

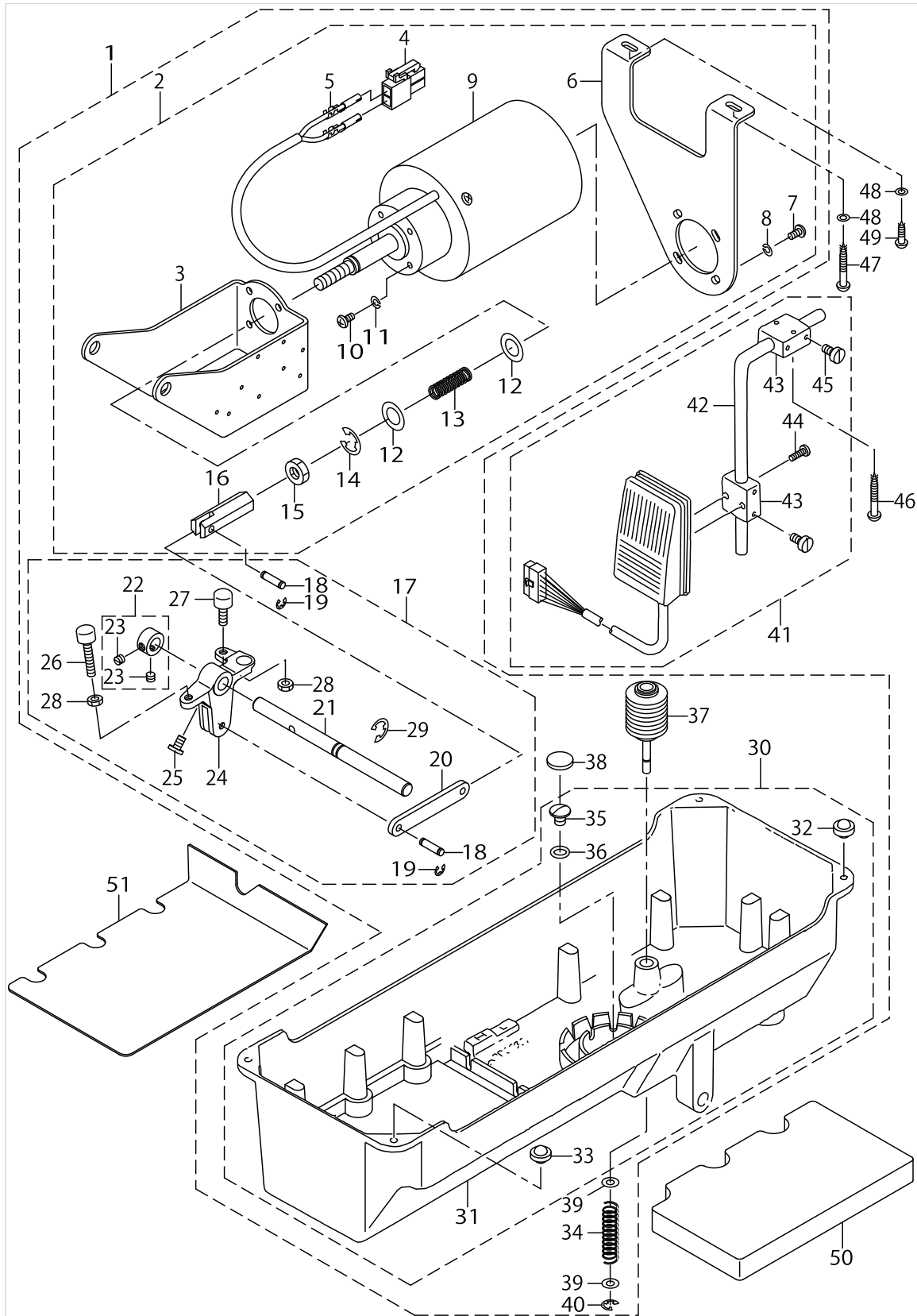
CONTENTS

AK108,AK109	1
HOW TO MAKE USE OF THIS PARTS LIST	5



AK108,AK109

No.	Parts No.	Parts name	Remarks	Level	Cons	Qty
1	GAKA08010A0	PRESSER LIFTING SOLENOID ASM.				1
2	GAKA08020A0	PRESSER LIFTING SOLENOID ASM.		*		1
3	GAK01013000	SOLENOID INSTALLING BRACKET B		*		1
4	HK034610020	2-POLE NYLON PLUG		*		1
5	HK03464000B	PIN CONTACT		*		2
6	GAK11001000	SOLENOID INSTALLING BRACKET A		*		1
7	SM4051001SB	SCREW M5X0.8 L=10		*		4
8	WS0511302KB	SPRING WASHER M5		*		4
9	GAKA0803000	PRESSER LIFTING SOLENOID		*		1
10	SM4051001SB	SCREW M5X0.8 L=10		*		4
11	WS0511302KB	SPRING WASHER M5		*		4
12	GAK01018000	THRUST WASHER		*		2
13	GAK01017000	SPRING		*		1
14	RE1200000K0	E-RING 12		*		1
15	NM6100663SE	NUT M10		*		1
16	GAK01019000	KNUCLE		*		1
17	GAKA08040A0	PRESSER LIFTING LEVER ASM.		*		1
18	MAO12002000	PEDAL SWITCH FRAME STUD		*		2
19	RE0320000K0	E-RING 3.2		*		4
20	GAK04004000	LEVER CONNECTING ROD		*		1
21	GAK01001000	PRESSER LIFTING SHAFT		*		1
22	CS111101DSH	THRUST COLLAR ASM. D=11.11 W=1		*		1
23	SS8660530TP	SCREW 1/4-40 L= 4.5		*		2
24	GAK30015000	PRESSER LIFTING LEVER		*		1
25	SS7151210SP	SCREW 15/64-28 L=12		*		1
26	GAK01003B00	PRESSER LIFTER STOPPER B		*		1
27	GAK01003A00	PRESSER LIFTER STOPPER A		*		1
28	NM6060003SC	NUT M6		*		2
29	B3426552000	THRUST RING		*		2
30	10162154	OIL RESERVOIR ASM.		*		1
31	10162105	OIL RESERVOIR		*		1
32	10162600	RUBBER CUSHION		*		2
33	11047107	RUBBER CUSHION		*		2
34	GAK30005000	SPRING		*		1
35	SM0081001SD	SCREW		*		1
36	RO098240100	RUBBER RING		*		1
37	GAK300010B0	KNEE PRESS LIFTER ROD ASM.		*		1
38	B8228125000	OIL RESERVOIR MAGNET		*		1
39	WP0621016SD	WASHER 6.2X13X1		*		2
40	RE0400000K0	E-RING 4		*		1
41	GAK840900B0	LIFTER KNEE SWITCH ASM. B				1
42	MAT80231T00	DRIVING BAR, T002		*		1
43	MAT80230T00	KNEE SWITCH SUPPORT BASE		*		2
44	SS7111410SP	SCREW 11/64-40 L=14		*		2
45	SS6151220SP	SCREW 15/64-28 L=11.5		*		4
46	SK3514000SC	WOOD SCREW D=5.1 L=40				2
47	SK3514000SC	WOOD SCREW D=5.1 L=40				1



AK108,AK109

No.	Parts No.	Parts name	Remarks	Level	Cons	Qty
48	WP0520656SA	WASHER 5.2X9.5X0.6				2
49	SK3482000SC	WOOD SCREW D=4.8 L=20				1
50	10162501	OIL RESERVOIR SPACER, A				1
51	10162402	DUST COVER	FOR JE			1

HOW TO MAKE USE OF THIS PARTS LIST

1.As to "#01" and "#02" refer to the "Note" given at the bottom of the respective pages.

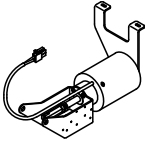
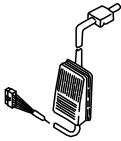
2.Codes on the "Qty" column

- Each numeral indicates the number of parts required.
- "0.1" and "2.5" indicate the length (in meters) of the respective parts.

3.Parentheses mean that the corresponding part is a subpart that constructs an assembly part.

4.Dotted lines on the Figures indicate assembly parts.

1. リストページの# 0 1、# 0 2の印は、ページ下の"注記"の説明を参照下さい。
2. 数量欄の数字は、個数を表し、0. 1、2. 5等の数値は、長さ（単位メートル）を表します。
3. 数量欄の（ ）は、組部品を構成している子部品であることを意味します。
4. イラストページの-----枠は、組構成であることを意味します。

TABLE OF UNIT COMBINATIONS ユニット組み合わせ表		
		
AK-108(GAKA08010B0)	○	○
AK-109(GAKA09010B0)	○	

NUMERICAL INDEX OF PARTS

PART NO	PAGE	REF NO.	PART NO	PAGE	REF NO.
10162105	2	31	WP0520656SA	4	48
10162154	2	30	WP0621016SD	2	39
10162402	4	51	WS0511302KB	2	11
10162501	4	50			
10162600	2	32			
11047107	2	33			
B3426552000	2	29			
B8228125000	2	38			
CS111101DSH	2	22			
GAK01001000	2	21			
GAK01003A00	2	27			
GAK01003B00	2	26			
GAK01013000	2	3			
GAK01017000	2	13			
GAK01018000	2	12			
GAK01019000	2	16			
GAK04004000	2	20			
GAK11001000	2	6			
GAK300010B0	2	37			
GAK30005000	2	34			
GAK30015000	2	24			
GAK840900B0	2	41			
GAKA08010A0	2	1			
GAKA08020A0	2	2			
GAKA0803000	2	9			
GAKA08040A0	2	17			
HK034610020	2	4			
HK03464000B	2	5			
MAO12002000	2	18			
MAT80230T00	2	43			
MAT80231T00	2	42			
NM6060003SC	2	28			
NM6100663SE	2	15			
RE0320000K0	2	19			
RE0400000K0	2	40			
RE1200000K0	2	14			
RO098240100	2	36			
SK3482000SC	4	49			
SK3514000SC	2	47			
SM0081001SD	2	35			
SM4051001SB	2	10			
SS6151220SP	2	45			
SS7111410SP	2	44			
SS7151210SP	2	25			
SS8660530TP	2	23			