

MODEL : MS-1261/MS-1261M

List No : 1031-06

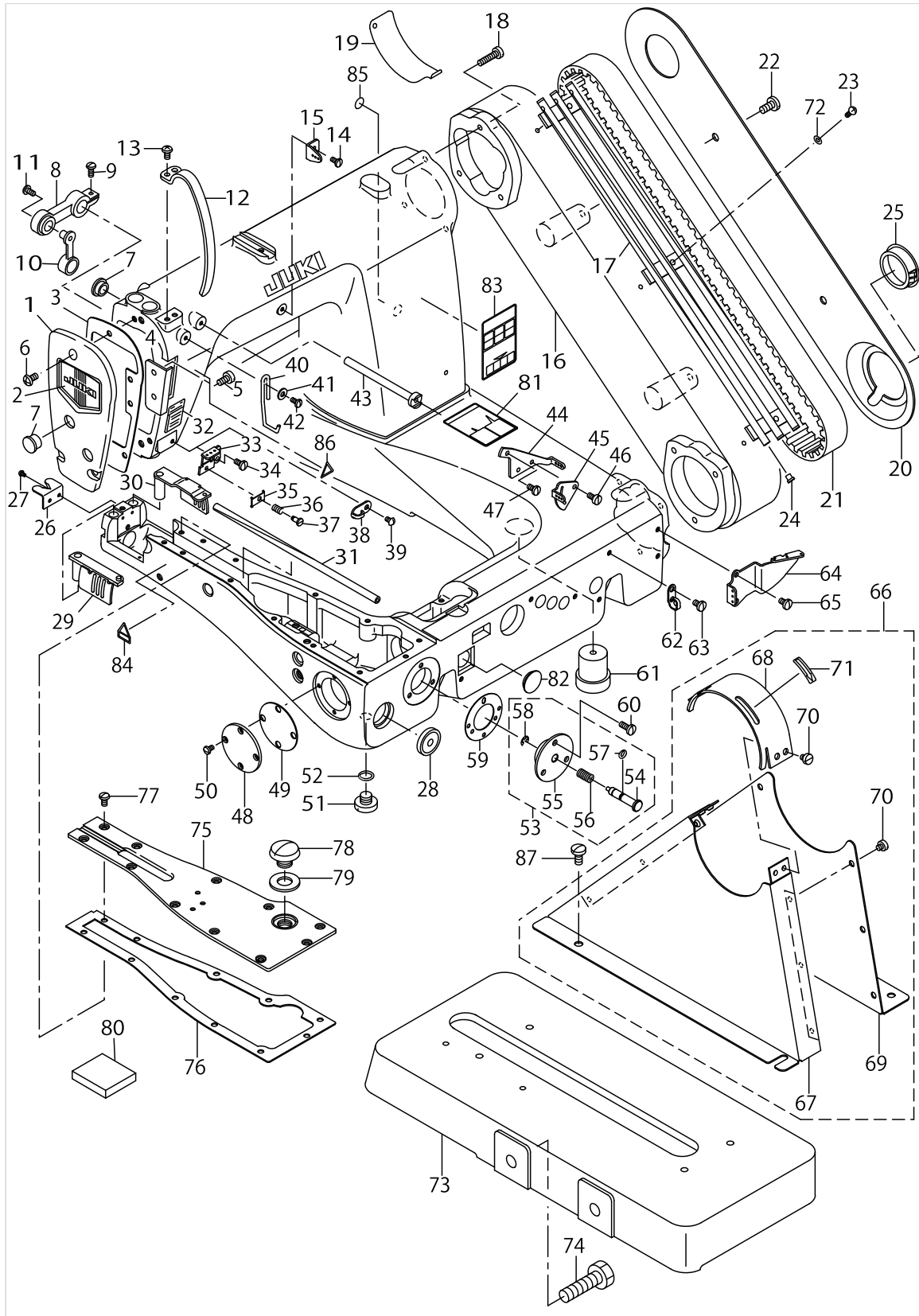
PARTS LIST

Published:09/10/2017

CONTENTS

FRAME & MISCELLANEOUS COVER COMPONENTS	1
LOOPER THREAD GUIDE COMPONENTS	5
NEEDLE BAR & MAIN SHAFT COMPONENTS	9
PRESSER BAR & LOWER SHAFT COMPONENTS	13
FEED MECHANISM COMPONENTS.....	17
LOOPER & FEED DOG COMPONENTS	21
KNEE LIFTER COMPONENTS	23
THREAD STAND COMPONENTS.....	25
TABLE OF EXCHANGING GAUGE PARTS (1).....	27
TABLE OF EXCHANGING GAUGE PARTS (2).....	29
TABLE OF EXCHANGING GAUGE PARTS (3).....	31
LIST FOR INFORMATION OF CHANGE (1).....	33
LIST FOR INFORMATION OF CHANGE (2).....	34
HOW TO MAKE USE OF THIS PARTS LIST	35

FRAME & MISCELLANEOUS COVER COMPONENTS



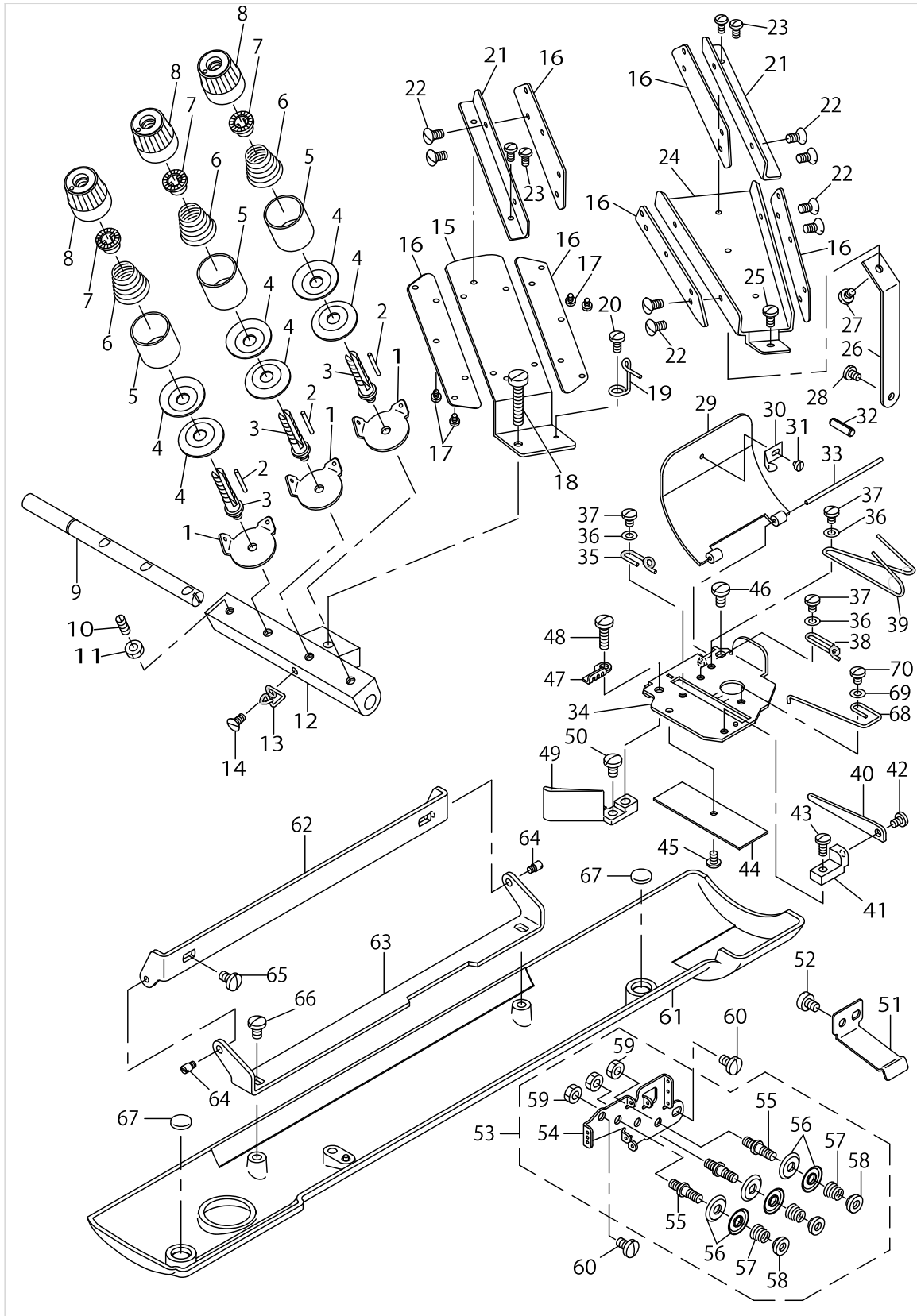
FRAME & MISCELLANEOUS COVER COMPONENTS

No.	Parts No.	Parts name	Remarks	Level	Cons	Qty
1	12950705	FACE PLATE				1
2	22902506	FACE PLATE				1
3	12921003	FACE PLATE GASKET				1
4	12950804	FACE PLATE SIDE PLATE				1
5	SS6110610TP	SCREW 11/64-40 L=6				2
6	SS4120915SP	SCREW 3/16-28 L=9				3
7	TA1250406R0	RUBBER PLUG D=12.5 L=4				3
8	B11620260A0	TENSION RELEASE ARM ASM.				1
9	SS4091010SP	SCREW 9/64-40 L=10				1
10	B1161026000	CONNECTING LINK				1
11	SS5090710SP	SCREW 9/64-40 L= 6.5				1
12	12950606	TENSION COVER				1
13	SS4110815SP	SCREW 11/64-40 L=8				1
14	SS7090710SP	SCREW 9/64-40 L= 6.8				1
15	12966800	UPPER THREAD GUIDE				1
16	12951000	SPROCKET WHEEL COVER				1
17	12967501	LOWER THREAD TUBE (A)				1
18	SS6122030SP	SCREW 3/16-28 L=20				6
19	12921201	SPROCKET WHEEL AUXILIARY COVER	FOR EXCEPT V0			1
20	12921409	SPROCKET WHEEL COVER PLATE				1
21	B1219019000	TIMING BELT				1
22	SS7151210SP	SCREW 15/64-28 L=12				2
23	SS4090815SP	SCREW 9/64-40 L=8				3
24	B1124804000	THREAD GUIDE, SMALL				6
25	12921607	RUBBER PLUG				1
26	12922704	CHAIN CUTTER BLADE				1
27	SS3060410SP	SCREW 3/32-56 L=4				2
28	10704203	OIL POT WINDOW				1
29	12952552	LEFT GATE LOOPER COVER ASM.				1
30	12952255	RIGHT GATE LOOPER COVER ASM.				1
31	B1157019000	LOOPER THREAD TUBE (C)				1
32	12950507	THREAD INDICATION LABEL				1
33	12955803	THREAD TENSION DISK HOLDER	FOR MS-1261			1
34	SS7090910SP	SCREW 9/64-40 L= 8.5	FOR MS-1261			1
35	B1134850000A	THREAD TENSION DISC	FOR MS-1261			1
36	B1135850000	TENSION SPRING (A)	FOR MS-1261			1
37	SD0380551SL	HINGE SCREW D= 3.80 H= 5.5	FOR MS-1261			1
38	B1130051000	FRAME THREAD GUIDE, MIDDLE	FOR MS-1261M			1
39	SS3090610SP	SCREW 9/64-40 L=6	FOR MS-1261M			1
40	12965703	THREAD TAKE-UP TENSION LEVER				1
41	WP0450801SD	WASHER 4.5X10X0.8				1
42	SS5091020SP	SCREW 9/64-40 L= 9.5				1
43	12966909	TENSION RELEASE LEVER SHAFT				1
44	12967006	TENSION RELEASE LEVER				1
45	12967105	NEEDLE THREAD TENSION GUIDE				1
46	SS6090540SP	SCREW 9/64-40 L= 5.0				2
47	SS7090710SP	SCREW 9/64-40 L= 6.8				1

FRAME & MISCELLANEOUS COVER COMPONENTS

No.	Parts No.	Parts name	Remarks	Level	Cons	Qty
48	B1805019000	FRONT BUSHING COVER				1
49	B1806019000	GASKET				1
50	SS5090610SP	SCREW 9/64-40 L=6				4
51	SS7740740SP	SCREW 3/8-28 L= 6.5				2
52	RO068190100	RUBBER RING				2
53	12932158	PUSH BUTTON GUIDE ASM.				1
54	12932000	PUSH BUTTON STUD		*		1
55	12932109	PUSH BUTTON GUIDE		*		1
56	B1622541000	SPRING		*		1
57	RO040100210	O-RING		*		1
58	RE0400000K0	E-RING 4		*		1
59	B1806019000	GASKET				1
60	SS7111120SP	SCREW 11/64-40 L=10.5				3
61	B1156019000	RUBBER CUSHION, C				1
62	22920607	ARM THREAD GUIDE B				1
63	SS7110710SP	SCREW 11/64-40 L=7				1
64	12940102	LOOPER THREAD GUIDE PLATE				1
65	SS7110710SP	SCREW 11/64-40 L=7				2
66	B11041910A0	BELT COVER ASM.				1
67	B110419100A	BELT COVER		*		1
68	B110419100B	TOP COVER		*		1
69	B110419100C	BELT COVER PLATE		*		1
70	SS6110480SP	SCREW 11/64-40 L=4.3		*		10
71	CM500300001	DIRECTION LABEL		*		1
72	WP0370316SD	WASHER 3.7X8X0.3				3
73	12943700	BELT GUARD INSTALLING BASE				1
74	SS9284043CP	SCREW 7/16-16 L=40				2
75	12951950	BED COVER ASM.				1
76	12952008	BED COVER GASKET				1
77	SS5110810SP	SCREW 11/64-40 L=8				11
78	SS5820540SP	SCREW 1/2-28 L=5.0				1
79	B1140019000	GASKET				1
80	12970406	FELT A				1
81	40060166	LABEL				1
82	TA1600406R0	PLUG				1
83	CM301200002	SAFETY LABEL_L				1
84	CM300200001	ATTENTION SEAL				1
85	22901805	GROUND MARK				1
86	CM300200001	ATTENTION SEAL				1
87	SS7151210SP	SCREW 15/64-28 L=12				4

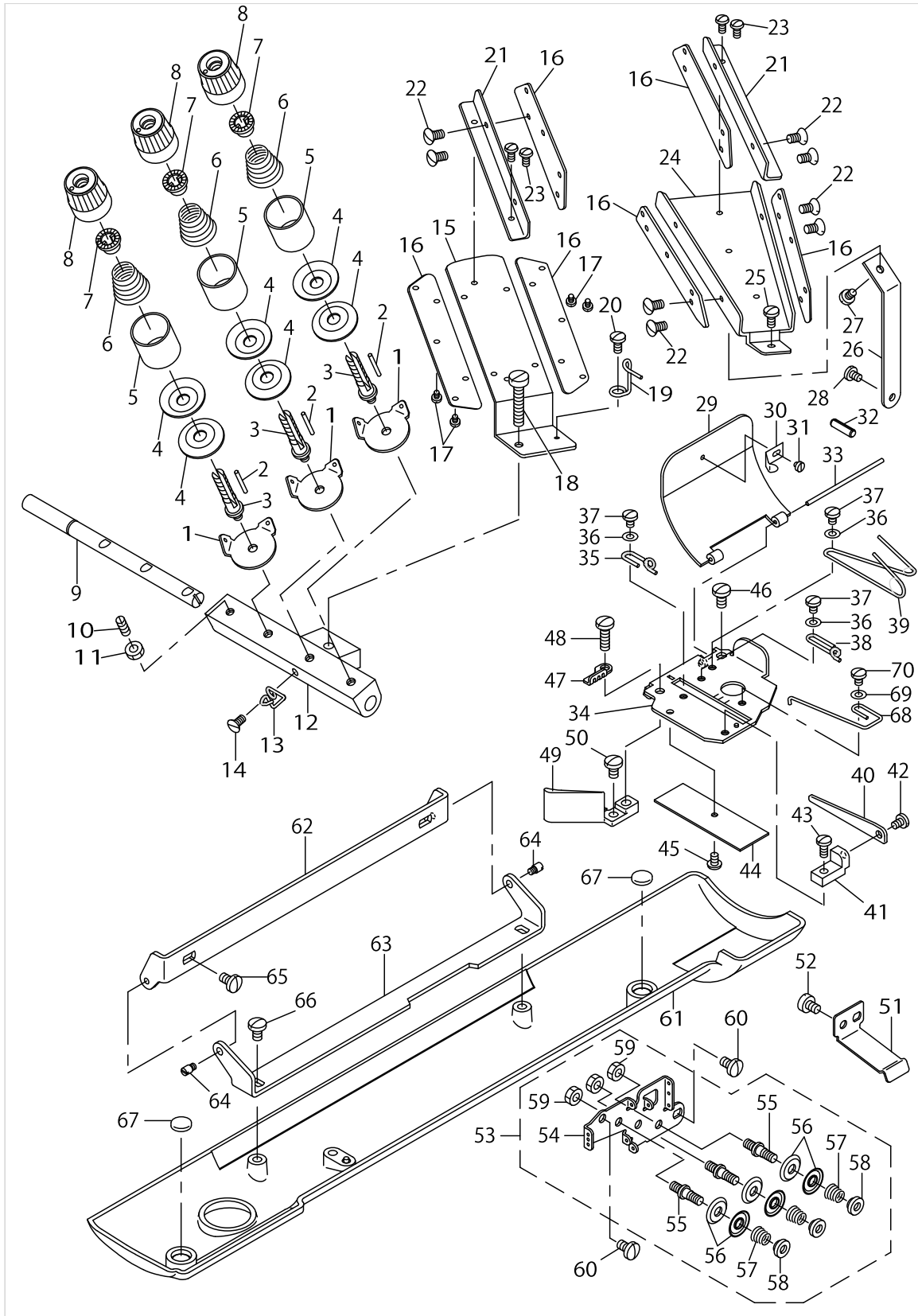
LOOPER THREAD GUIDE COMPONENTS



LOOPER THREAD GUIDE COMPONENTS

No.	Parts No.	Parts name	Remarks	Level	Cons	Qty
1	40085675	TENSION THREAD GUDE				3
2	B2310019000	TENSION RELEASING PIN				3
3	40085671	TENSION POST				3
4	B3126012000	THREAD TENSION DISK				6
5	11957305	TENSION DISC PRESSER				3
6	12938304	TENSION SPRING				3
7	B3112704000	TENSION SPRING BUSHING				3
8	11956703	THREAD TENSION KNOB, RED				3
9	12966602	TENSION RELEASING SHAFT				1
10	SS8111160SP	SCREW 11/64-40 L=11.0				1
11	NS6110310SP	NUT 11/64-40				1
12	40085676	TENSION STUD BUSHING				1
13	12966701	LOWER THREAD GUIDE (LEFT)				1
14	SS7090510SP	SCREW 9/64-40 L= 4.6				1
15	12967600	THREAD GUIDE MOUNTING BRACKET				1
16	B2402019000	THREAD GUIDE				6
17	SS7060510SP	SCREW 3/32-56 L=4.8				4
18	SS4622340SP	SCREW 3/16-32 L=23				1
19	B2421019000	THREAD EYELET				1
20	SS7090510SP	SCREW 9/64-40 L= 4.6				1
21	12967303	THREAD GUIDE FITTING PLATE				2
22	SS2060510SP	SCREW 3/32-56 L=4.5				8
23	SS5060410SP	SCREW 3/32-56 L=3.5				4
24	12967204	THREAD GUIDE BRACKET				1
25	SS7090710SP	SCREW 9/64-40 L= 6.8				1
26	12967402	THREAD GUIDE BRACKET SUPPORT				1
27	SS7090520SP	SCREW 9/64-40 L= 4.5				1
28	SS4090815SP	SCREW 9/64-40 L=8				1
29	12936803	LOOPER THREAD TAKE-UP COVER				1
30	B2208019000	LOOPER THREAD TAKE-UP COVER SPRING				1
31	SS6060210SP	SCREW 3/32-56 L= 1.9				1
32	PS0500202KP	SPRING PIN 5X20				1
33	12936902	LOOPER THREAD TAKE-UP PIN				1
34	12935516	TENSION TAKE-UP STRIPPER PLATE				1
35	12966305	LOOPER THREAD GUIDE (C)				1
36	WP0371016SD	WASHER 3.7X8X1				3
37	SS7090530SP	SCREW 9/64-40 L= 4.5				3
38	12966206	LOOPER THREAD GUIDE (B)				1
39	12966107	LOOPER THREAD GUIDE (A)				1
40	12966008	LOOPER THREAD CAM PRESSER				1
41	12935607	CAM HOLDER BRACKET				1
42	SS7090530SP	SCREW 9/64-40 L= 4.5				1
43	SS7090850SP	SCREW 9/64-40 L=8				1
44	12936217	FELT				1
45	SS5090420SP	SCREW 9/64-40 L=3.5				1
46	SS7110840SP	SCREW 11/64-40 L=7.8				1
47	12935805	LOOPER THREAD GUIDE				1

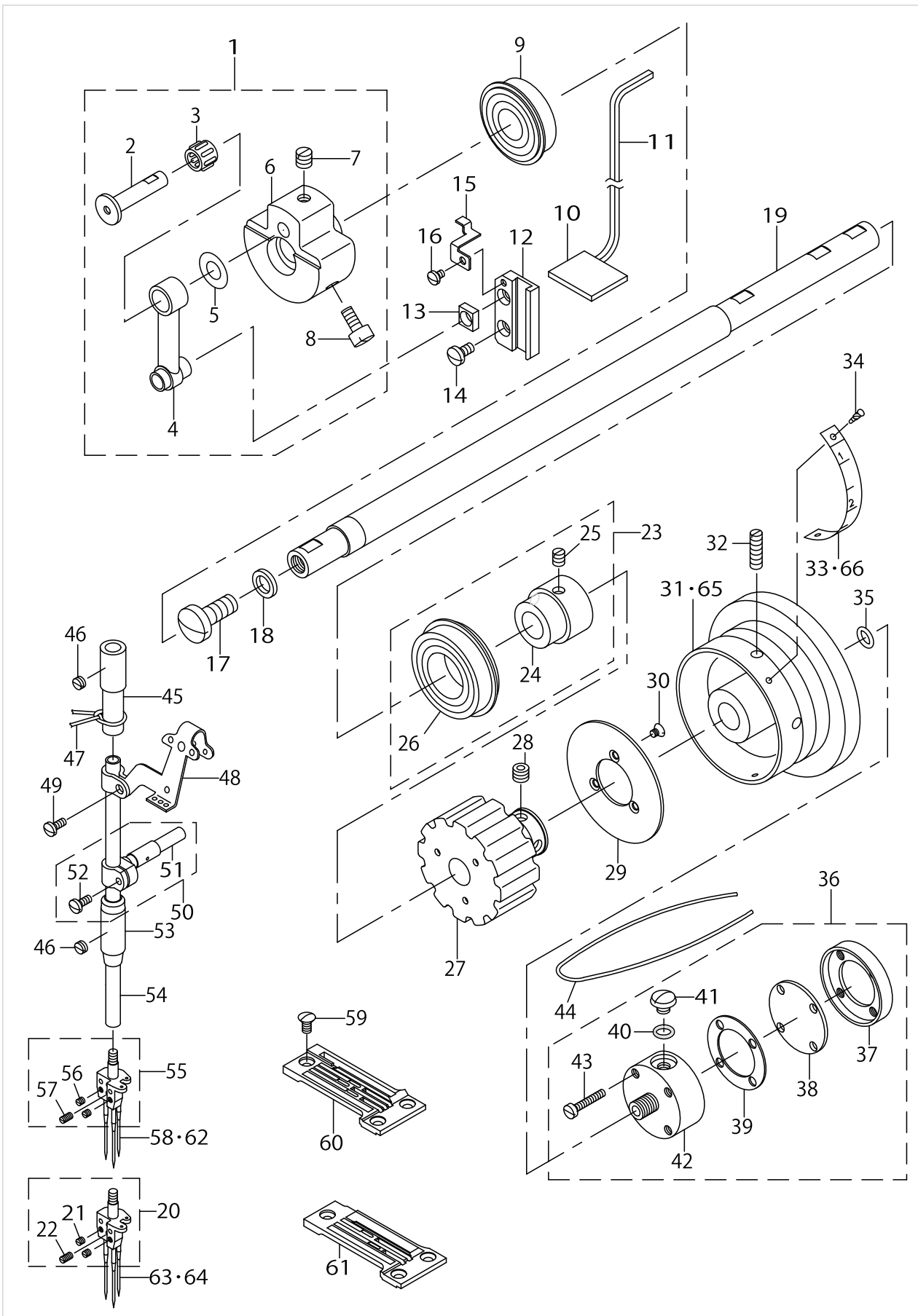
LOOPER THREAD GUIDE COMPONENTS



LOOPER THREAD GUIDE COMPONENTS

No.	Parts No.	Parts name	Remarks	Level	Cons	Qty
48	SS7111410SP	SCREW 11/64-40 L=14				1
49	12936506	STRIPPER PLATE BRACKET				1
50	SS7110710SP	SCREW 11/64-40 L=7				1
51	12922803	COVER SPRING				1
52	SS6110610TP	SCREW 11/64-40 L=6				2
53	12967758	LOOPER THREAD TENSION ASM.				1
54	12939500	TENSION BASE PLATE		*		1
55	12939609	TENSION POST		*		3
56	12939708	TENSION DISC		*		6
57	12939807	TENSION SPRING		*		3
58	12939906	TENSION NUT		*		3
59	NS6110350SP	NUT 11/64-40		*		3
60	SS7110710SP	SCREW 11/64-40 L=7				2
61	12951505	LOOPER THREAD TUBE COVER				1
62	12921904	LOOPER THREAD TUBE COVER HING				1
63	12922001	LOOPER THREAD TUBE COVER HING				1
64	B1534816000	HINGE SCREW				2
65	SS7110840SP	SCREW 11/64-40 L=7.8				2
66	SS7110840SP	SCREW 11/64-40 L=7.8				2
67	40038331	VIBRATION-PROOF RUBBER				2
68	12935904	LOOPER THREAD GUIDE				1
69	WP0371016SD	WASHER 3.7X8X1				1
70	SS7090530SP	SCREW 9/64-40 L= 4.5				1

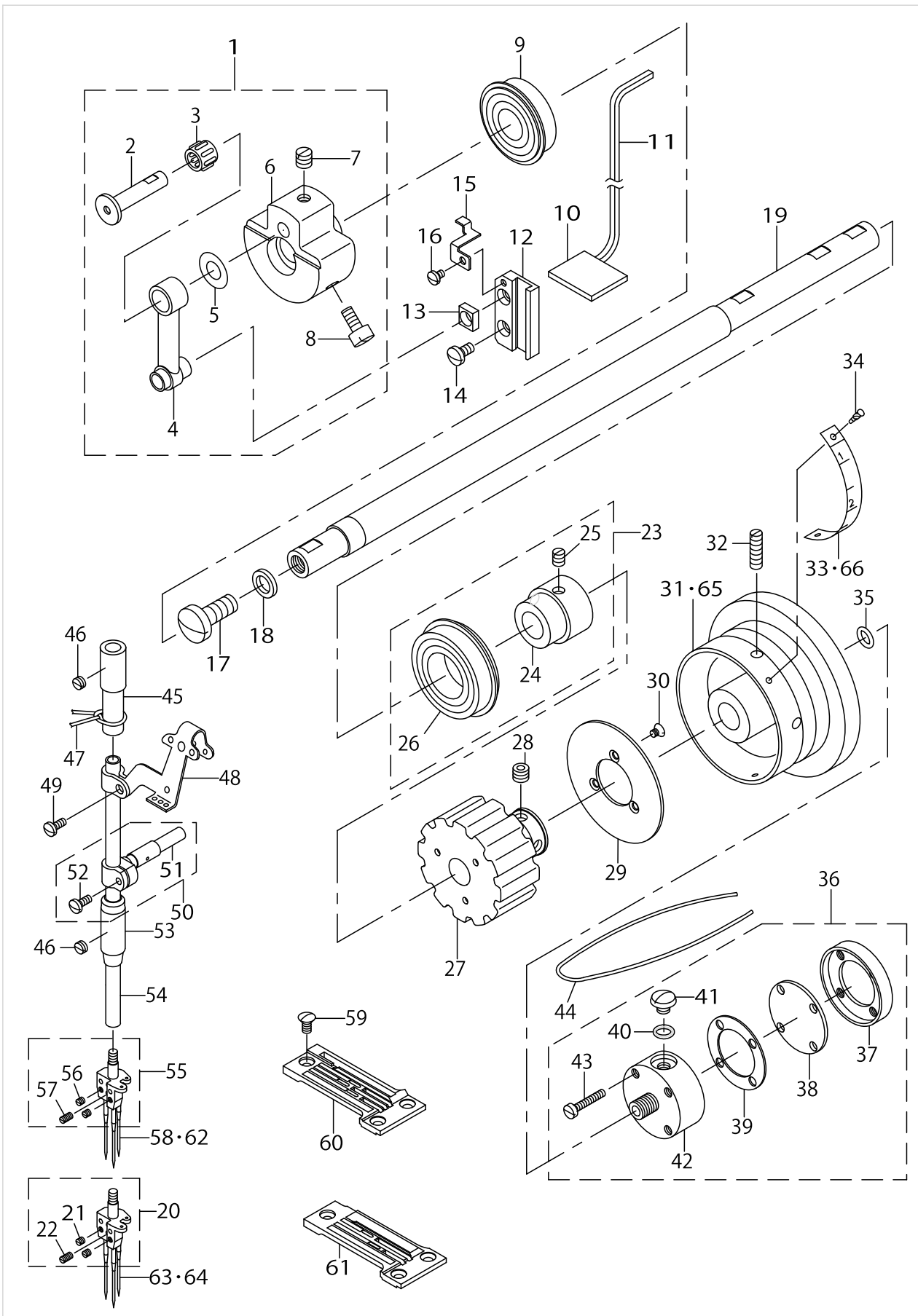
NEEDLE BAR & MAIN SHAFT COMPONENTS



NEEDLE BAR & MAIN SHAFT COMPONENTS

No.	Parts No.	Parts name	Remarks	Level	Cons	Qty
1	B12070260A0	COUNTERWEIGHT ASM.				1
2	B12090190A0	NEEDLE BAR CRANK PIN ASM.		*		1
3	B1236125BA0	NEEDLE BUSHING ASM.	SELECTIVE PART	*		1
4	B1408038000	NEEDLE BAR CRANK ROD, B		*		1
5	B1208019000	WASHER		*		1
6	B1207026000	COUNTERWEIGHT		*		1
7	SS8660410SP	SCREW 1/4-40 L= 4.2		*		2
8	SS6151220SP	SCREW 15/64-28 L=11.5		*		2
9	B1202512000	MAIN SHAFT BUSHING, FRONT				1
10	B3510019000	OIL FELT				1
11	B3541012000	OIL WICK				1
12	B1412038000	SLIDE BLOCK GUIDE				1
13	B1411019000	SLIDE BLOCK GUIDE				1
14	SS7120910SP	SCREW 3/16-28 L=9				2
15	12943106	OIL WICK PRESSER				1
16	SS7090530SP	SCREW 9/64-40 L= 4.5				1
17	SS7740740SP	SCREW 3/8-28 L= 6.5				1
18	B1222019000	PACKING				1
19	12924502	MAIN SHAFT				1
20	12956256	NEEDLE CLAMP (1/4") ASM.	REFER TO THE TABLE OF EXCHANGING PARTS ON P.17			1
21	SS8080310TP	SCREW 1/8-44 L=2.8		*		2
22	SS8080610SP	SCREW 1/8-44 L=5.5		*		1
23	12924767	BUSHING REAR ASM.				1
24	12924718	BUSHING		*		1
25	SS8150710SP	SCREW 15/64-28 L=7		*		2
26	B1203512000	BUSHING, REAR		*		1
27	12924916	SPROCKET WHEEL A				1
28	SS8660522TP	SCREW 1/4-40 L=4.5				2
29	12925004	PULLEY PLATE				1
30	SS1090510SP	SCREW 9/64-40 L=5				3
31	12955407	HAND WHEEL	FOR MS-1261			1
32	SS8152030SP	SCREW 15/64-28 L=20				2
33	12955506	HAND WHEEL SCALE PLATE	FOR MS-1261			1
34	B1161227000	RIVET				2
35	RO098240100	RUBBER RING				1
36	40026875	OIL CUP BODY ASM.				1
37	B3504019000	OIL CUP BODY CAP RETAINER		*		1
38	B3502019000	OIL CUP BODY CAP		*		1
39	B3503019000	OIL CUP BODY CAP GASKET		*		1
40	RO069180100	RUBBER RING		*		1
41	SS5660440SP	SCREW 1/4-40 L= 4.0		*		1
42	40026874	OIL CUP BODY		*		1
43	SS6092120SP	SCREW 9/64-40 L=21.2		*		4
44	CQ252000000	OIL WICK				1
45	B1402026B0G	NEEDLE BAR BUSHING, UPPER				1
46	SS8150310SP	SCREW 15/64-28 L= 3.4				2

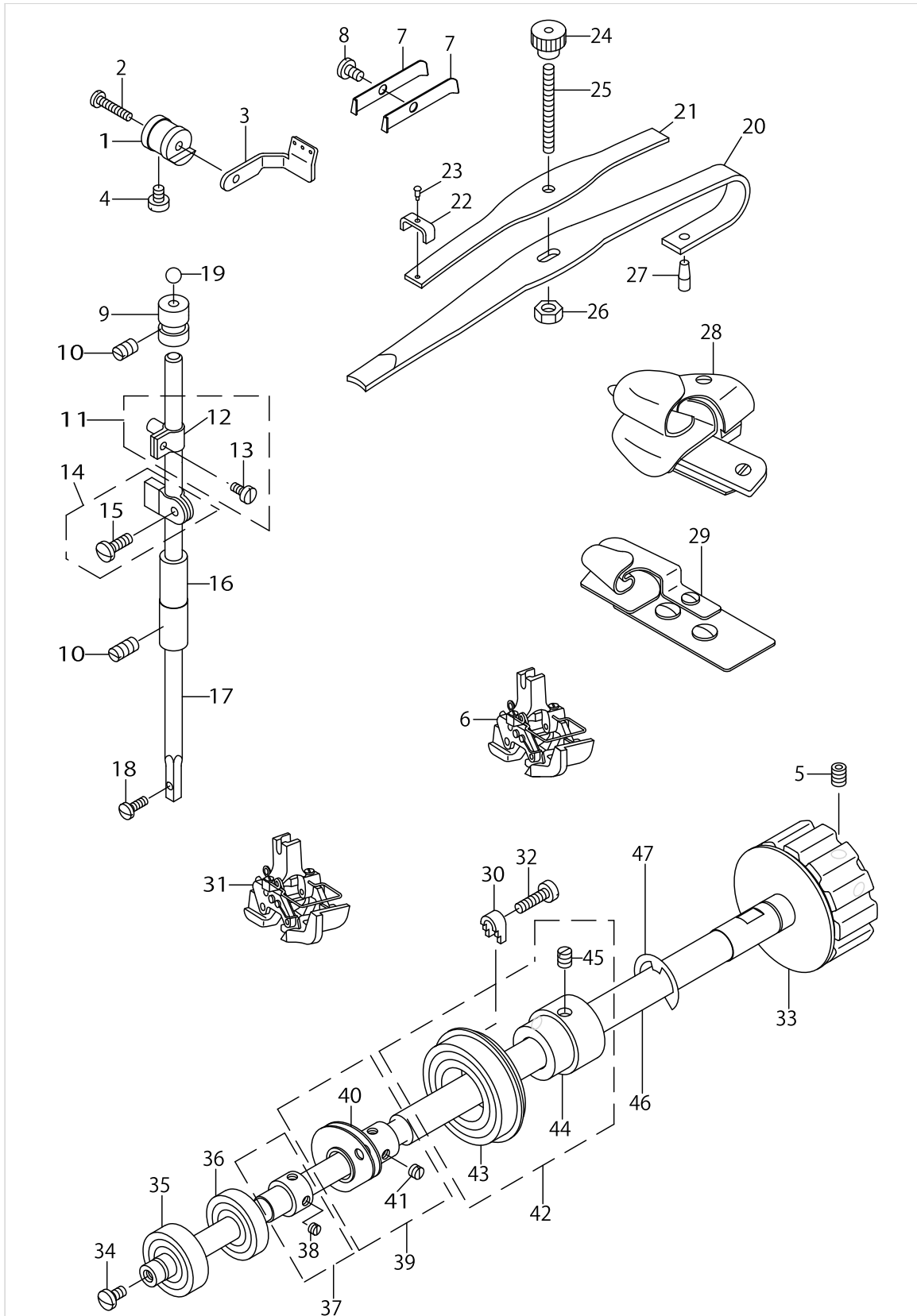
NEEDLE BAR & MAIN SHAFT COMPONENTS



NEEDLE BAR & MAIN SHAFT COMPONENTS

No.	Parts No.	Parts name	Remarks	Level	Cons	Qty
47	CQ300000000	OIL WICK				0.1
48	B1901026000	THREAD TAKE-UP				1
49	SS7090910TP	SCREW 9/64-40 L= 8.5				1
50	B14090190B0	NEEDLE BAR CLAMP ASM.				1
51	B1418019000	FELT		*		1
52	SS7090910SP	SCREW 9/64-40 L= 8.5		*		1
53	B1404026B0G	NEEDLE BAR BUSHING, LOWER				1
54	B1401019000	NEEDLE BAR				1
55	12956256	NEEDLE CLAMP (1/4") ASM.	REFER TO THE TABLE OF EXCHANGING PARTS ON P.17			1
56	SS8080310TP	SCREW 1/8-44 L=2.8		*		2
57	SS8080610SP	SCREW 1/8-44 L=5.5		*		1
58	MC380001300	NEEDLE UY128GAS NM130	FOR JE(MS-1261)			3
59	SS2110920TP	SCREW 11/64-40 L=8.5				3
60	12953907	THROAT PLATE XH (1/4")	REFER TO THE TABLE OF EXCHANGING PARTS ON P.17			1
61	12954509	THROAT PLATE MH (1/4")	REFER TO THE TABLE OF EXCHANGING PARTS ON P.17			1
62	MUY128N2100	NEEDLE UYX128GAS-NY #21	FOR MS-1261			3
63	MC380001200	NEEDLE UY128GAS NM120	FOR JE(MS-1261M)			3
64	MUY128N1900	NEEDLE UYX128GAS-NY #19	FOR MS-1261M			3
65	12978003	HAND WHEEL	FOR MS-1261M			1
66	12978102	HAND WHEEL SCALE PLATE	FOR MS-1261M			1

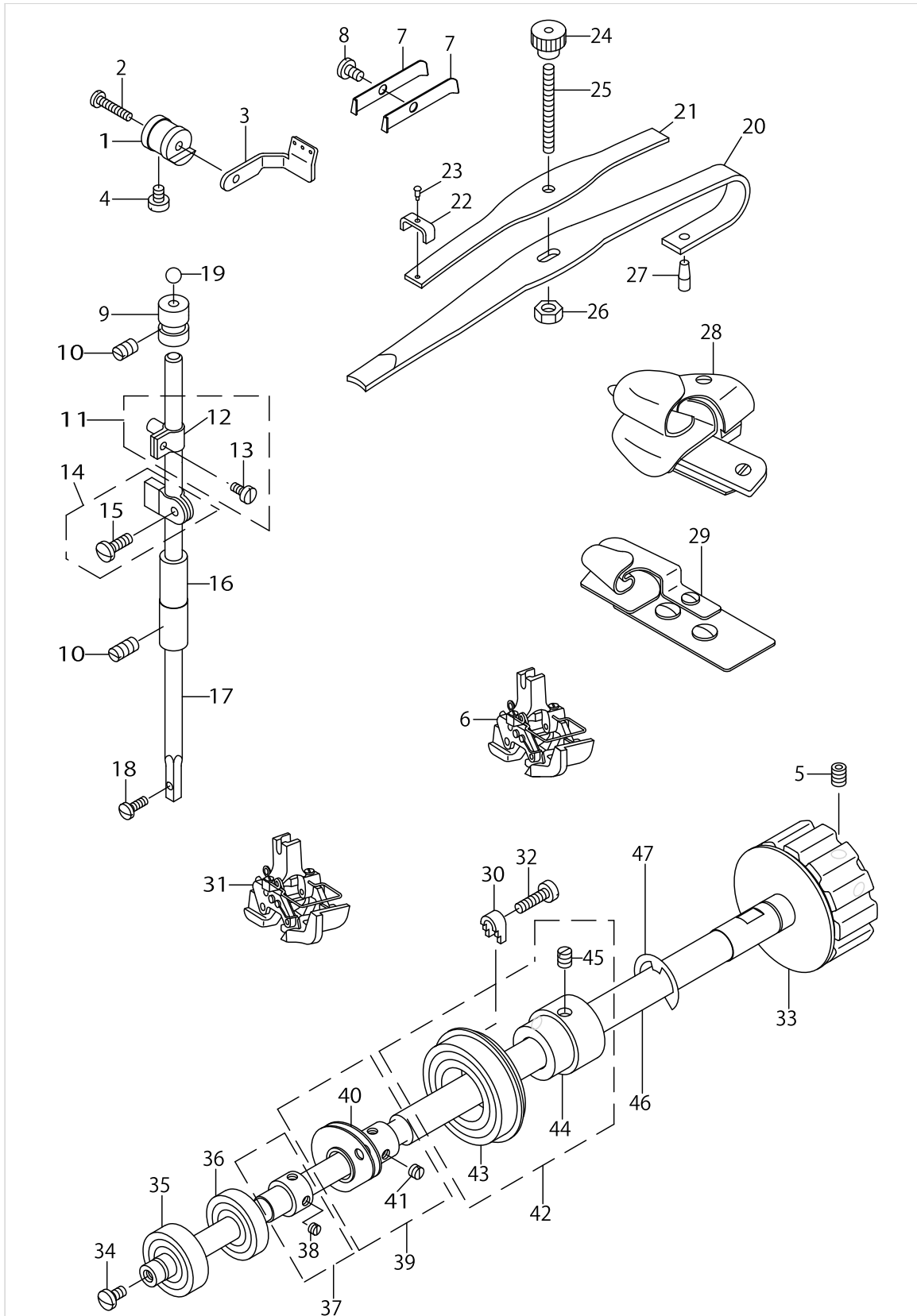
PRESSER BAR & LOWER SHAFT COMPONENTS



PRESSER BAR & LOWER SHAFT COMPONENTS

No.	Parts No.	Parts name	Remarks	Level	Cons	Qty
1	12968103	FITTING SHAFT				1
2	SS7091410SP	SCREW 9/64-40 L=13.5				1
3	12968202	LOOPER THREAD EYELET				1
4	SS6110610TP	SCREW 11/64-40 L=6				1
5	SS8150822TP	SCREW 15/64-28 L=8				2
6	12956066	PRESSER MH(1/4") ASM.,EXPORT	REFER TO THE TABLE OF EXCAHNGING PARTS ON P.17			1
7	B1127026000	LOOPER GATE RETAINING SPRING				2
8	SS7090710SP	SCREW 9/64-40 L= 6.8				1
9	B1502019000	PRESSER BAR UPPER BUSHING				1
10	SS8150310SP	SCREW 15/64-28 L= 3.4				2
11	22906457	NEEDLE BAR HOLDER ASM.				1
12	22906408	NEEDLE ROD HOLDER		*		1
13	SS6090670TP	SCREW 9/64-40 L=6		*		1
14	B15040190A0	PRESSER BAR GUIDE BRACKET ASM.				1
15	SS7111110TP	SCREW 11/64-40 L=10.5		*		1
16	B1503026000	PRESSER BAR LOWER BUSHING				1
17	B1501019000	PRESSER BAR				1
18	SS7091110SP	SCREW 9/64-40 L=10.5				1
19	B1506019000	PRESSER BAR STEEL BALL				1
20	B2327019000	PRESSER BAR SPRING				1
21	B2329019000	PRESSER BAR SPRING UPPER				1
22	B2330019000	PRESSER BAR SPRING RETAINER				1
23	A116100100B	RIVET				1
24	B2326019000	PRESSER REGULATING SCREW NUT (B)				1
25	B2324261000	PRESSER REGULATING SCREW				1
26	NS6120310SP	NUT 3/16-28				1
27	B2328019000	PRESSER BAR SPRING PIN				1
28	MAM2990BBBA	HOLDER 1/4XH ASM.	REFER TO THE TABLE OF EXCAHNGING PARTS ON P.17			1
29	MAM2970EEBA	FOLDER 1/4MH	REFER TO THE TABLE OF EXCAHNGING PARTS ON P.17			1
30	12924809	METAL PRESSER				3
31	12957064	PRESSER 1/4" ASM.,EXPORT	REFER TO THE TABLE OF EXCAHNGING PARTS ON P.17			1
32	SS6111610SP	SCREW 11/64-40 L=16				3
33	12933719	SPROCKET WHEEL B				1
34	SS7110830SP	SCREW 11/64-40 L= 7.5				1
35	B1802019000	BALL BEARING, FRONT				1
36	B1803019000	BALL BEARING, INTERMEDIATE				1
37	B18080190A0	SLEEVE ASM.				1
38	SS8110310SP	SCREW 11/64-40 L= 2.8		*		2
39	12966552	LOOPER THREAD CAM ASM.				1
40	12966503	LOOPER THREAD CAM		*		1
41	SS8110310SP	SCREW 11/64-40 L= 2.8		*		2
42	12924767	BUSHING REAR ASM.				1
43	B1203512000	BUSHING, REAR		*		1
44	12924718	BUSHING		*		1
45	SS8150710SP	SCREW 15/64-28 L=7		*		2

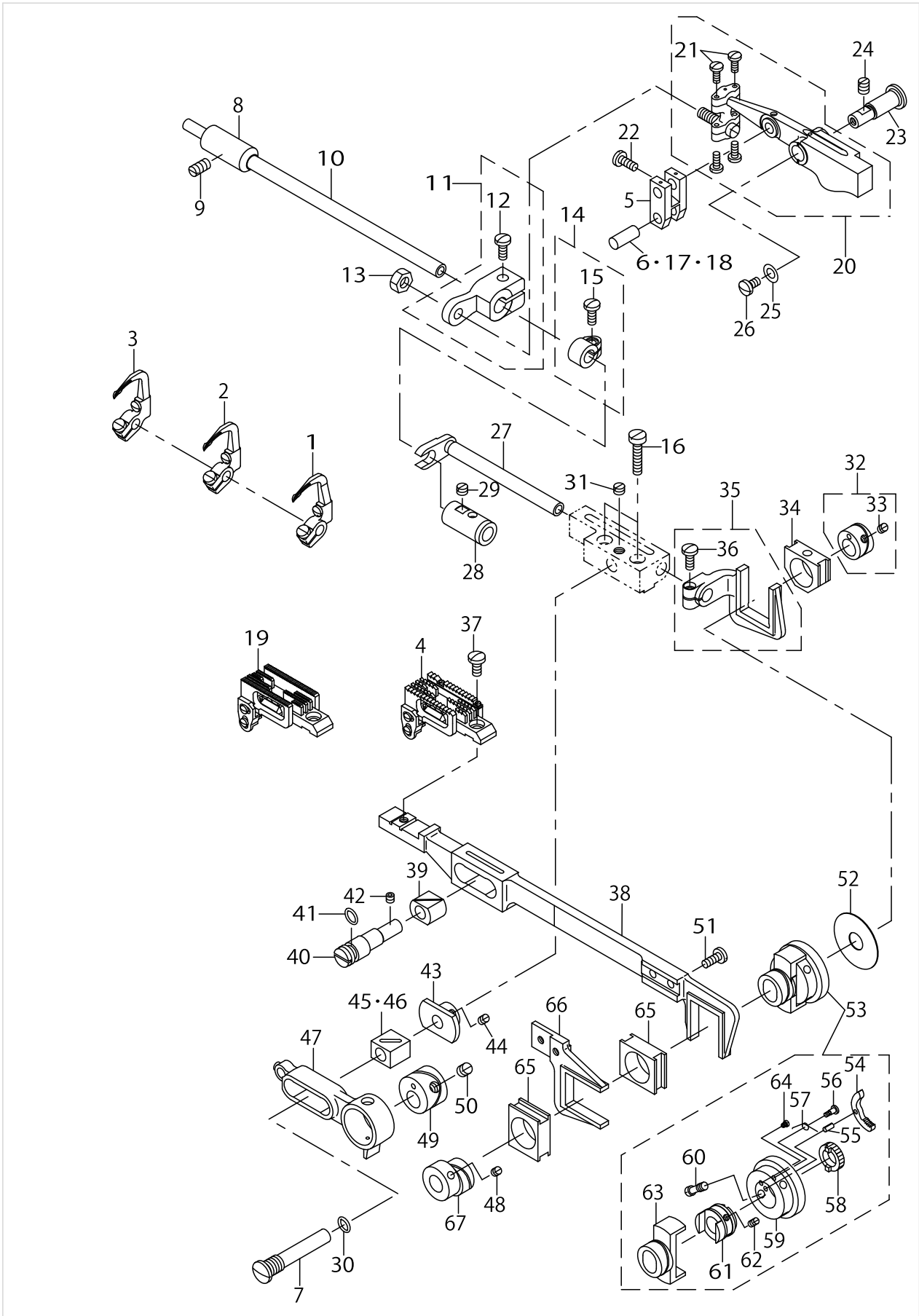
PRESSER BAR & LOWER SHAFT COMPONENTS



PRESSER BAR & LOWER SHAFT COMPONENTS

No.	Parts No.	Parts name	Remarks	Level	Cons	Qty
46	12965513	LOOPER SHAFT				1
47	RE1200000K0	E-RING 12				1

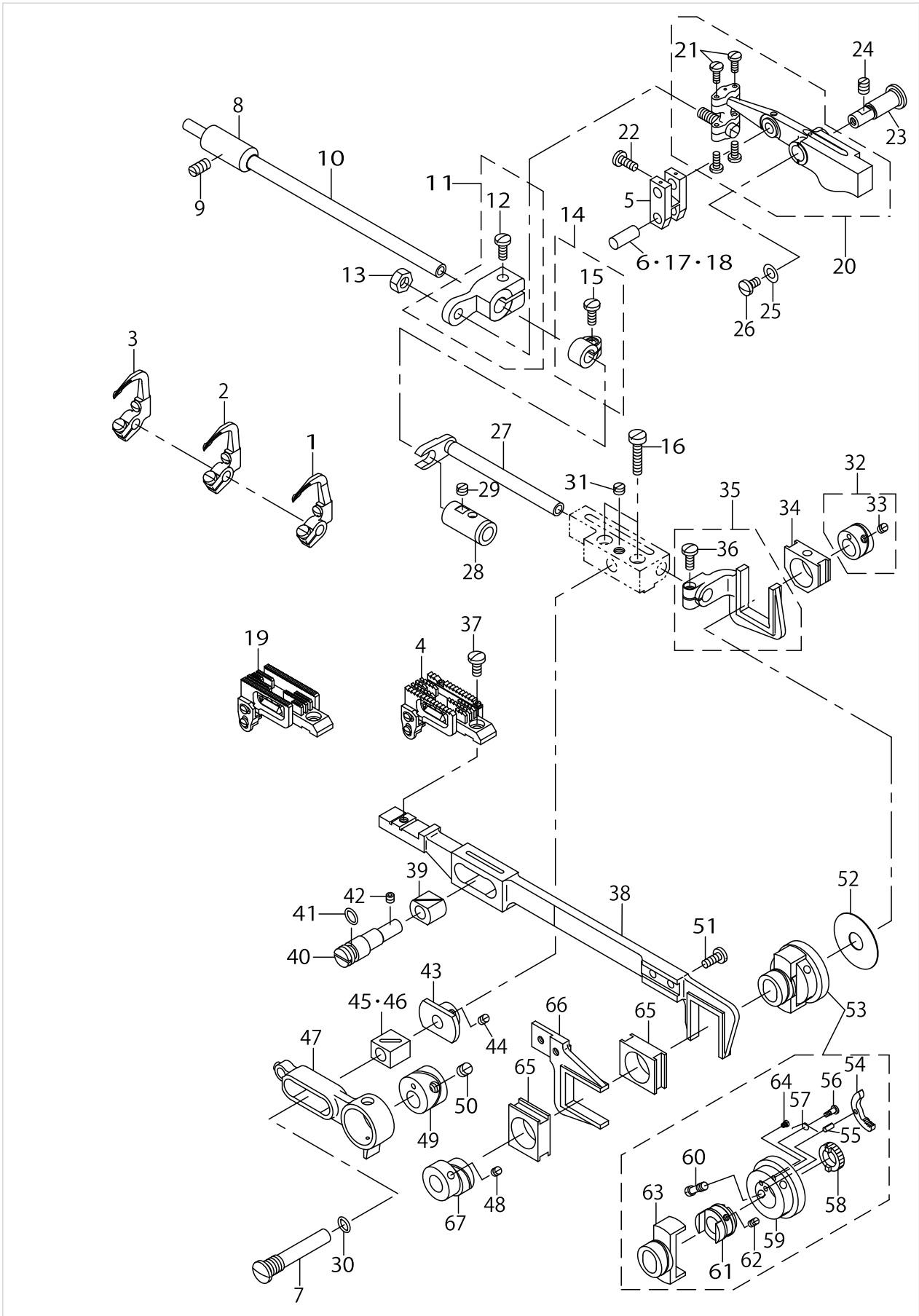
FEED MECHANISM COMPONENTS



FEED MECHANISM COMPONENTS

No.	Parts No.	Parts name	Remarks	Level	Cons	Qty
1	12968558	LOOPER L (1) ASM.	FOR MS-1261,1261M REFER TO THE TABLE OF EXCHANGING PARTS ON P.17			1
2	12968855	LOOPER R (1) ASM.	FOR MS-1261,1261M REFER TO THE TABLE OF EXCHANGING PARTS ON P.17			1
3	12969150	LOOPER C (1) ASM.	FOR MS-1261,1261M REFER TO THE TABLE OF EXCHANGING PARTS ON P.17			1
4	12965059	FEED DOG XH(1/4") ASM.	FOR MS-1261 REFER TO THE TABLE OF EXCHANGING PARTS ON P.17			1
5	B2115191000	FEED ROCKER CONNECTING LINK				1
6	B2116191000	FEED CONNECTING LINK PIN				2
7	B2106026000	SLIDE BLOCK PIN				1
8	B2502019000	BUSHING, FRONT				1
9	SS8151150SP	SCREW 15/64-28 L=10.5				1
10	12968004	LOOPER SHAFT				1
11	B21230260A0	FEED ROCKER ASM.				1
12	SS7111110TP	SCREW 11/64-40 L=10.5		*		1
13	NS6150310SP	NUT 15/64-28				1
14	B25050190A0	CONNECTION CRANK ASM.				1
15	SS7111110TP	SCREW 11/64-40 L=10.5		*		1
16	SS6122030SP	SCREW 3/16-28 L=20				2
17	B211619100A	FEED CONNECTING LINK PIN	SELECTIVE PART			2
18	B211619100B	FEED CONNECTING LINK PIN	SELECTIVE PART			2
19	12969952	FEED DOG MH(1/4") ASM.	FOR MS-1261M REFER TO THE TABLE OF EXCHANGING PARTS ON P.17			1
20	B21020260A0A	FEED ROCKER ASM.				1
21	SS7090920SP	SCREW 9/64-40 L= 8.5		*		4
22	SS7080510TP	SCREW 1/8-44 L=4.5				4
23	B2107019000	FEED ROCKER SHAFT				1
24	SS8150710SP	SCREW 15/64-28 L=7				1
25	40040608	PACKING				1
26	SS7110830SP	SCREW 11/64-40 L= 7.5				1
27	B2002026000A	LOOPER AVOIDING SHAFT BRACKET				1
28	B2503019000	LOOPER ROCKER SHAFT BUSHING, R				1
29	SS8150310SP	SCREW 15/64-28 L= 3.4				1
30	RO095200100	RUBBER RING				1
31	SS8150410SP	SCREW 15/64-28 L=4				1
32	B20060190A0	LOOPER AVOIDING ECCENTRIC CAM				1
33	SS8110410TP	SCREW 11/64-40 L= 3.5		*		2
34	B1635191000	SLIDE BLOCK				1
35	B20012610A0	LOOPER AVOIDING SHAFT ASM.				1
36	SS7111110TP	SCREW 11/64-40 L=10.5		*		1
37	SS7621040SP	SCREW 3/16-32 L= 9.5				1
38	B1601026000	FEED BAR				1
39	B1610019000	SLIDE BLOCK				1
40	12962809	ADJUSTING SHAFT				1
41	RO061180100	RUBBER RING				1
42	SS8110422TP	SCREW 11/64-40 L=4				1
43	B2108026000	SLIDE BLOCK STOPPER				1
44	SS8110510SP	SCREW 11/64-40 L=5				1
45	B2105019000	FEED ROCKER SLIDE BLOCK	SELECTIVE PART			1

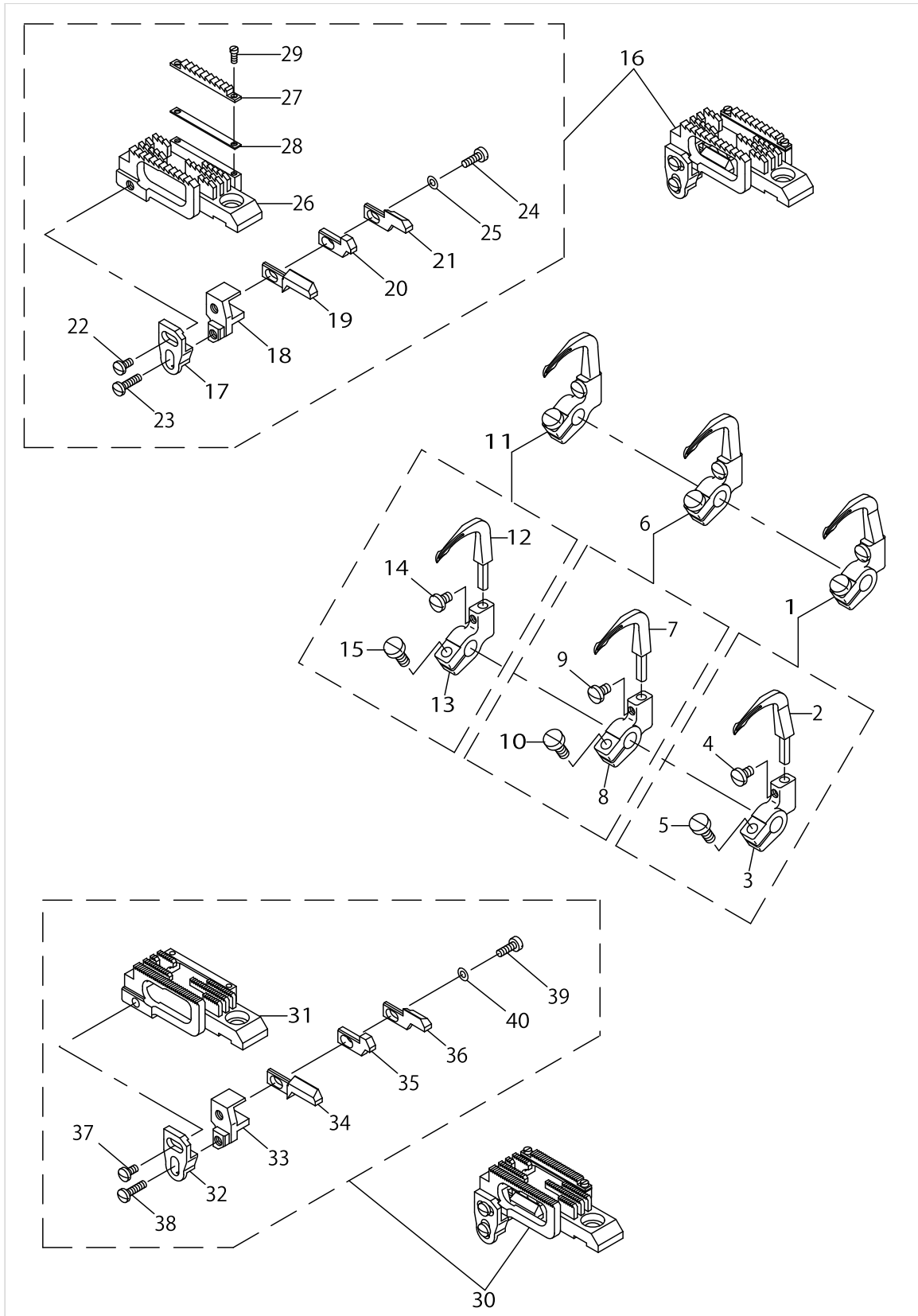
FEED MECHANISM COMPONENTS



FEED MECHANISM COMPONENTS

No.	Parts No.	Parts name	Remarks	Level	Cons	Qty
46	B210501900A	FEED ROCKER SLIDE BLOCK	SELECTIVE PART			1
47	B2101261000A	FEED ROCKER DRIVING LEVER				1
48	SS8660612TP	SCREW 1/4-40 L=6				2
49	B21032610A0	FEED ECCENTRIC CAM				1
50	SS8660612TP	SCREW 1/4-40 L=6				2
51	SS7111110TP	SCREW 11/64-40 L=10.5				1
52	12931903	BODY CAP				1
53	12963062	FEED ECCENTRIC BASE ASM.				1
54	B1624191000	RATCHET PAWL		*		1
55	PS0250081K0	SPRING PIN 2.5X8		*		1
56	B1626191000	SCREW		*		1
57	B1625191000	RATCHET PAWL SPRING		*		1
58	B1623191000	RATCHET GEAR		*		1
59	12963005	FEED ECCENTRIC		*		1
60	12931606	SCREW		*		1
61	12931507	FEED ECCENTRIC BODY		*		1
62	SS8110410TP	SCREW 11/64-40 L= 3.5		*		2
63	B1621261000A	FEED ECCENTRIC GUIDE		*		1
64	12931705	SCREW		*		1
65	B1606191000	FEED ECCENTRIC SLIDE BLOCK				2
66	B1602019000	FEED LIFTING FORKED CONNECTION				1
67	12962601	FEED ECCENTRIC CAM				1

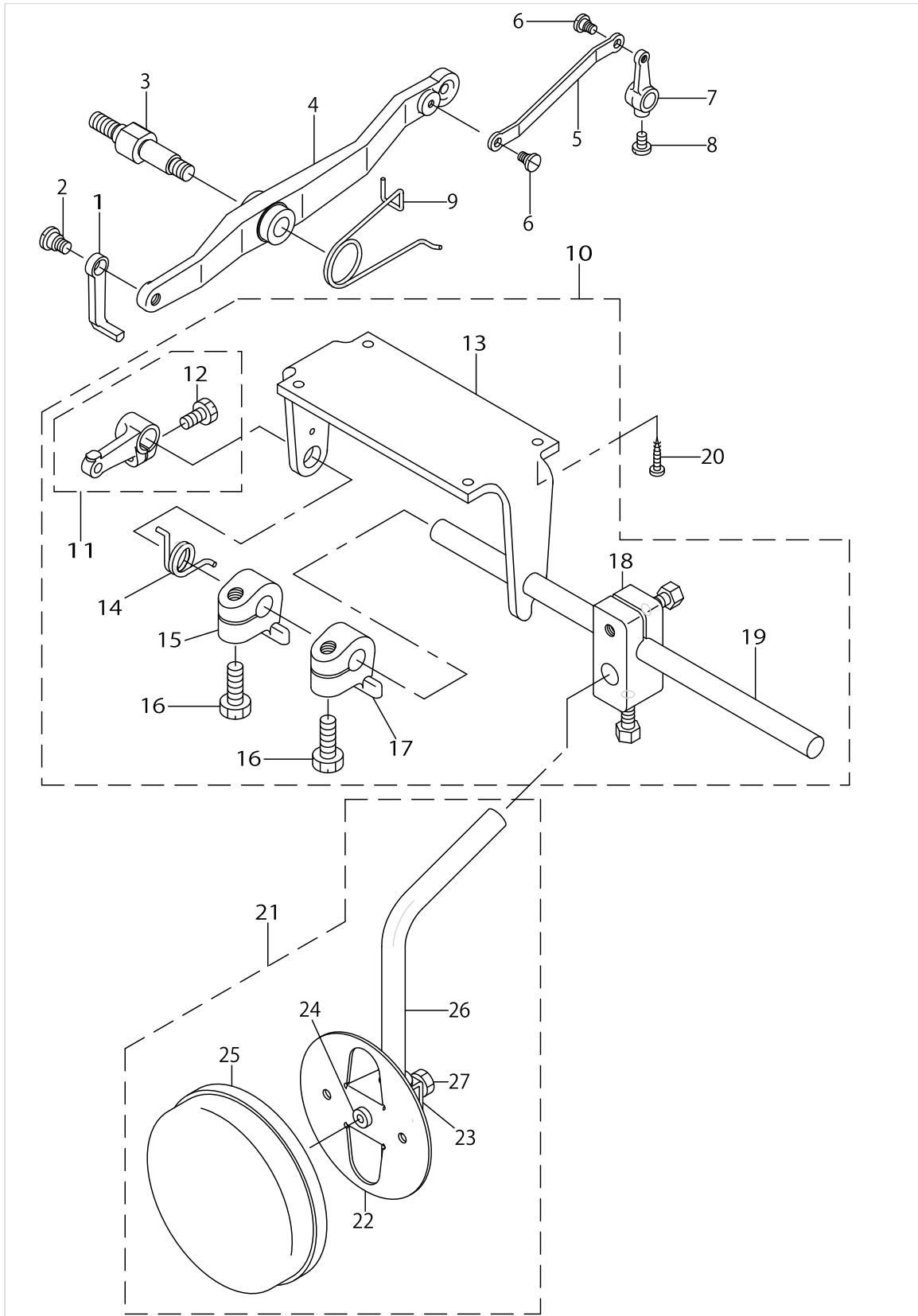
LOOPER & FEED DOG COMPONENTS



LOOPER & FEED DOG COMPONENTS

No.	Parts No.	Parts name	Remarks	Level	Cons	Qty
1	12968558	LOOPER L (1) ASM.	FOR MS-1261,1261M REFER TO THE TABLE OF EXCHANGING PARTS ON P.17			1
2	12968509	LOOPER L (1)		*		1
3	12942009	LOOPER HOLDER,2		*		1
4	SS4080620TP	SCREW 1/8-44 L=6		*		1
5	SS7090910TP	SCREW 9/64-40 L= 8.5		*		1
6	12968855	LOOPER R (1) ASM.	FOR MS-1261,1261M REFER TO THE TABLE OF EXCHANGING PARTS ON P.17			1
7	12968806	LOOPER R (1)		*		1
8	12969309	LOOPER HOLDER (3)		*		1
9	SS4080620TP	SCREW 1/8-44 L=6		*		1
10	SS7090910TP	SCREW 9/64-40 L= 8.5		*		1
11	12969150	LOOPER C (1) ASM.	FOR MS-1261,1261M REFER TO THE TABLE OF EXCHANGING PARTS ON P.17			1
12	12969101	LOOPER C (1)		*		1
13	12941100	LOOPER HOLDER,1		*		1
14	SS4080620TP	SCREW 1/8-44 L=6		*		1
15	SS7090910TP	SCREW 9/64-40 L= 8.5		*		1
16	12965059	FEED DOG XH(1/4") ASM.	FOR MS-1261 REFER TO THE TABLE OF EXCHANGING PARTS ON P.17			1
17	12964409	NEEDLE HOLDER ADJUSTING BASE		*		1
18	12964805	NEEDLE HOLDER (A)		*		1
19	40080579	NEEDLE POSITIONER (L)		*		1
20	12964607	NEEDLE HOLDER (INSIDE)		*		1
21	40080580	NEEDLE POSITIONER (R)		*		1
22	SS7090510SP	SCREW 9/64-40 L= 4.6		*		1
23	SS7091110TP	SCREW 9/64-40 L=10.5		*		1
24	SS7091110TP	SCREW 9/64-40 L=10.5		*		1
25	WP0450000SD	WASHER 4.5X8X0.5		*		1
26	12965000	FEED DOG XH(1/4")		*		1
27	12963807	ADJUSTING FEED DOG XH		*		1
28	12963906	FEED DOG ADJUSTING PLATE (A)		*		1
29	12964300	ADJUSTING FEED DOG SETSCREW		*		2
30	12969952	FEED DOG MH(1/4") ASM.	FOR MS-1261M REFER TO THE TABLE OF EXCHANGING PARTS ON P.17			1
31	12969903	FEED DOG MH(1/4")		*		1
32	12964409	NEEDLE HOLDER ADJUSTING BASE		*		1
33	12964805	NEEDLE HOLDER (A)		*		1
34	40080579	NEEDLE POSITIONER (L)		*		1
35	12964607	NEEDLE HOLDER (INSIDE)		*		1
36	40080580	NEEDLE POSITIONER (R)		*		1
37	SS7090510SP	SCREW 9/64-40 L= 4.6		*		1
38	SS7091110TP	SCREW 9/64-40 L=10.5		*		1
39	SS7091110TP	SCREW 9/64-40 L=10.5		*		1
40	WP0450000SD	WASHER 4.5X8X0.5		*		1

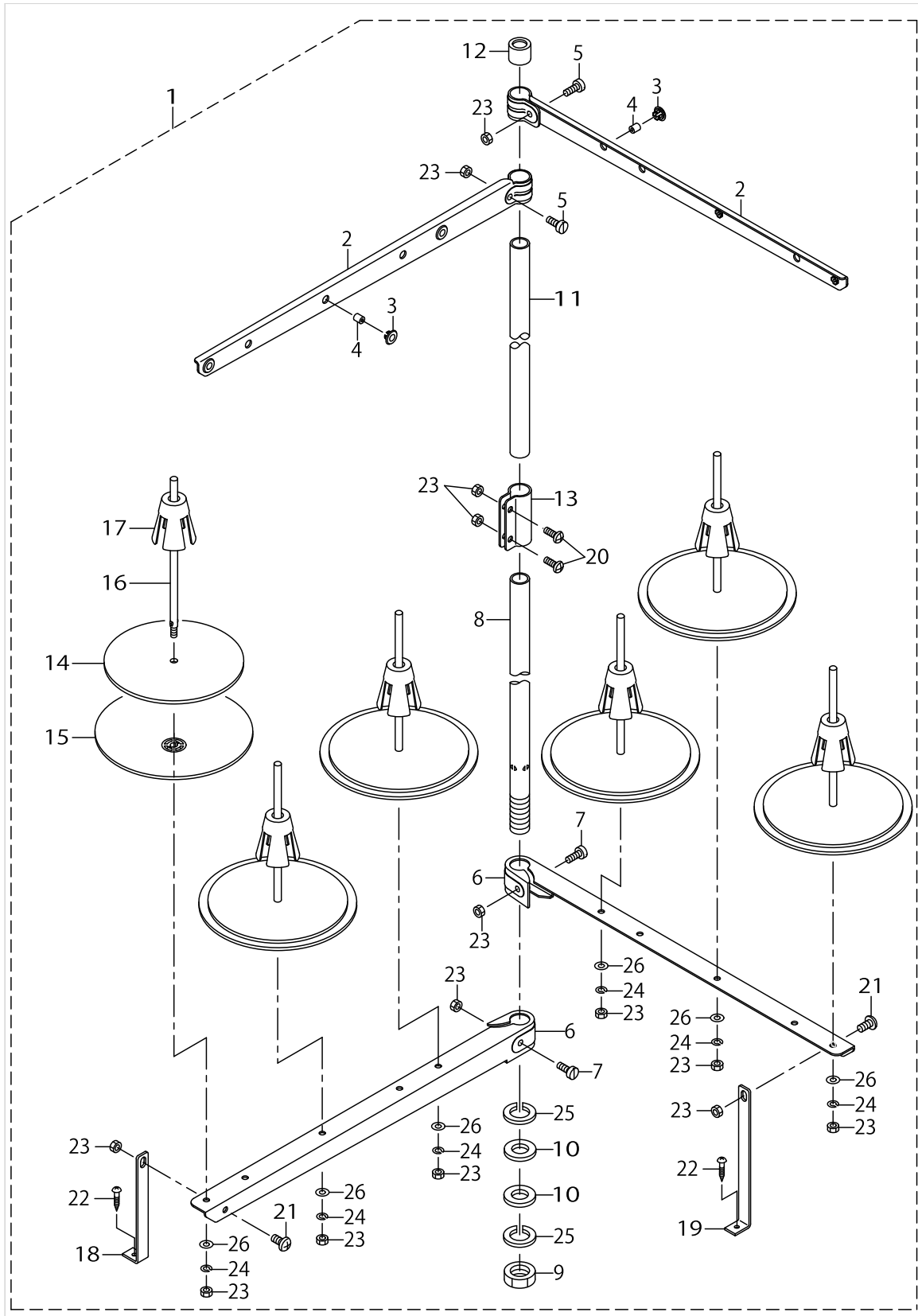
KNEE LIFTER COMPONENTS



KNEE LIFTER COMPONENTS

No.	Parts No.	Parts name	Remarks	Level	Cons	Qty
1	B2322019000	PRESSERBARLIFTINGBRACKETLIFTER				1
2	SD0790431SP	HINGE SCREW D= 7.94 H= 4.3				1
3	B3701019000	HINGE SCREW				1
4	B231919100A	PRESSER BAR LIFTING LEVER				1
5	B2315019000	TENSIONRELEASINGCONNECTINGLINK				1
6	SD0450211SP	HINGE SCREW D= 4.50 H= 2.1				2
7	B2317019000	TENSION RELEASING SHAFT CRANK				1
8	SS7110710SP	SCREW 11/64-40 L=7				1
9	B2321019000	PRESSER BAR LIFTING LEVER SPRING				1
10	B81011910A0	KNEE LIFTER ASM.				1
11	B81021910A0	KNEE LIFTER LEVER ASM.		*		1
12	SS9151210TP	SCREW 15/64-28 L=11.8		*		1
13	B8101191000	KNEE DRIVING SHAFT MOUNTING		*		1
14	B8511180000	SPRING		*		1
15	12944906	KNEE LIFTER SPRING RACK ARM		*		1
16	SS9182010TE	BOLT 9/32-20 L=20		*		2
17	12944906	KNEE LIFTER SPRING RACK ARM		*		1
18	22932453	BRACKET ASM.		*		1
19	B3421012000	KNEE PRESS ROD		*		1
20	SK3452500SC	WOOD SCREW D=4.5 L=25				4
21	22934251	KNEE PAD PLATE ASM.				1
22	22934202	KNEE PAD PLATE		*		1
23	22934301	KNEE PAD PLATE SUPPORT		*		1
24	22934400	KNEE PAD PLATE RUBBER		*		1
25	22934509	KNEE PAD PLATE COVER		*		1
26	22934608	KNEE PAD UPRIGHT SHAFT		*		1
27	SM9061203SE	SCREW M6 L=12		*		1

THREAD STAND COMPONENTS

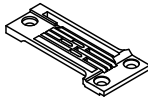
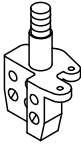
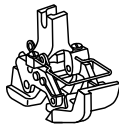
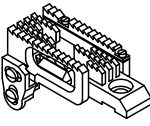





THREAD STAND COMPONENTS

No.	Parts No.	Parts name	Remarks	Level	Cons	Qty
1	40111348	THREAD STAND ASM.				1
2	40106575	SPOOL REST LONG ARM UPPER		*		2
3	40085795	THREAD GUIDE BUSHING		*		6
4	40085794	THREAD GUIDE		*		6
5	40096327	SPOOL REST ARM UPPER SCREW		*		2
6	40106574	SPOOL REST LONG ARM LOWER		*		2
7	40096326	SPOOL REST ARM LOWER SCREW		*		2
8	40085784	SPOOL REST ROD LOWER		*		1
9	40096325	SPOOL REST ROD NUT		*		1
10	40085796	SPOOL REST ROD RUBBER CUSHION		*		2
11	40085785	SPOOL REST ROD UPPER		*		1
12	40085793	SPOOL REST ROD RUBBER CAP		*		1
13	40085792	SPOOL REST ROD JOINT		*		1
14	40085789	SPOOL REST CUSHION		*		6
15	40085788	SPOOL REST		*		6
16	40085790	SPOOL PIN		*		6
17	40085791	SPOOL RETAINER		*		6
18	40106577	SPOOL REST ARM LOWER A		*		1
19	40106578	SPOOL REST ARM LOWER B		*		1
20	SM4051405SE	SCREW M5 L=14		*		2
21	SM4051001SE	SCREW M5 L=10		*		2
22	SK3412001SE	WOOD SCREW D=4.1 L=20		*		2
23	NM6050001SE	NUT M5		*		14
24	WP0531001SC	WASHER M5		*		6
25	WP1612616SE	WASHER 16X30X2.6		*		2
26	WS0510002KN	SPRING WASHER M5		*		6

TABLE OF EXCHANGING GAUGE PARTS (1)

MS-1261 (For Extra heavy-weight)
MS-1261 (極厚物用)

Description 品名			Gauge set (with finger guard)		Throat plate		Needle clamp asm.		Presser foot asm. (with finger guard)		Feed dog asm.	
			ゲージセット (指ガード付)		針板		針留(組)		押さえ(組) (指ガード付)		送り歯(組)	
Needle gauge size 針幅												
Code ゲージ 記号												
	inch	mm	Ref.No	Part No.	Ref.No	Part No.	Ref.No	Part No.	Ref.No	Part No.	Ref.No	Part No.
E	7/32	5.6	1	12954061	6	12954004	11	12956355	16	12957163	21	12965158
F	1/4	6.4	2	12953964	7	12953907	12	12956256	17	12957064	22	12965059
G	9/32	7.2	3	12954160	8	12954103	13	12956454	18	12957262	23	12965257
H	5/16	8.0	4	12954269	9	12954202	14	12956553	19	12957361	24	12965356
K	3/8	9.5	5	12954368	10	12954301	15	12956652	20	12957460	25	12965455

Description 品名			Looper asm. (L)			Looper asm. (R)			Looper asm. (C)		
			ルーパ(L)(組)			ルーパ(R)(組)			ルーパ(C)(組)		
Needle gauge size 針幅											
Code ゲージ 記号											
	inch	mm	Ref.No	Part No.	Mark No.	Ref.No	Part No.	Mark No.	Ref.No	Part No.	Mark No.
E	7/32	5.6	26	12968558	1	28	12968855	1	30	12969150	1
F	1/4	6.4		↑	1		↑	1		↑	1
G	9/32	7.2		↑	1		↑	1		↑	1
H	5/16	8.0	27	12968657	2	29	12968954	2		↑	1
K	3/8	9.5		↑	2		↑	2		↑	1

Spacer for feed dog(FOR MS-1261) 送り歯用スペーサ(MS-1261用)				
No.	Thickness 板厚(mm)	Ref.No	Part No.	Description 品名
①	0.3	31	12976601	Adjusting plate B 送り歯調節板 B
②	0.8	32	12976700	Adjusting plate C 送り歯調節板 C
③	1.0	33	12976809	Adjusting plate D 送り歯調節板 D

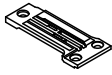
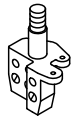

The spacer is not included in gauge set.
スペーサは、ゲージセットには含まれません。

TABLE OF EXCHANGING GAUGE PARTS (1)

No.	Parts No.	Parts name	Remarks	Level	Cons	Qty
1	12954061	WITH FINGER GUARD GAUGE, 7/32.				1
2	12953964	GAUGE SET 1/4				1
3	12954160	GAUGE SET 9/32				1
4	12954269	GAUGE SET, 5/16, FINGER GUARD				1
5	12954368	WITH FINGER GUARD GAUGE, 3/8				1
6	12954004	THROAT PLATE XH 7/32				1
7	12953907	THROAT PLATE XH (1/4")				1
8	12954103	THROAT PLATE XH 9/32				1
9	12954202	THROAT PLATE XH 5/16				1
10	12954301	THROAT PLATE XH 3/8				1
11	12956355	NEEDLE CLAMP 7/32" ASM.				1
12	12956256	NEEDLE CLAMP (1/4") ASM.				1
13	12956454	NEEDLE CLAMP 9/32" ASM.				1
14	12956553	NEEDLE CLAMP 5/16" ASM.				1
15	12956652	NEEDLE CLAMP 3/8" ASM.				1
16	12957163	PRESSER FOOT ASM., 7/32				1
17	12957064	PRESSER 1/4" ASM.,EXPORT				1
18	12957262	PRESSER FOOT ASM., 9/32				1
19	12957361	PRESSER FOOT ASM., 5/16				1
20	12957460	PRESSER (3/8") ASM. EXPORT				1
21	12965158	FEED DOG XH ASM. 7/32				1
22	12965059	FEED DOG XH(1/4") ASM.				1
23	12965257	FEED DOG XH ASM. 9/32				1
24	12965356	FEED DOG XH ASM. 5/32				1
25	12965455	FEED DOG XH ASM. 3/8				1
26	12968558	LOOPER L (1) ASM.				1
27	12968657	LOOPER L (2) ASM.				1
28	12968855	LOOPER R (1) ASM.				1
29	12968954	LOOPER R (2) ASM.				1
30	12969150	LOOPER C (1) ASM.				1
31	12976601	FEED ADJUSTING PLATE, B				1
32	12976700	FEED ADJUSTING PLATE, C				1
33	12976809	FEED ADJUSTING PLATE, D				1

TABLE OF EXCHANGING GAUGE PARTS (2)

MS-1261M (For Medium-weight)
MS-1261M (中厚物用)

Description 品名			Gauge set (with finger guard)		Throat plate		Needle clamp asm.		Presser foot asm. (with finger guard)	
			ゲージセット (指ガード付)		針板		針留(組)		押さえ(組) (指ガード付)	
Needle gauge size 針幅										
Code ゲージ 記号										
	inch	mm	Ref.No	Part No.	Ref.No	Part No.	Ref.No	Part No.	Ref.No	Part No.
E	7/32	5.6	1	12954665	6	12954608	11	12956355	16	12956165
F	1/4	6.4	2	12954566	7	12954509	12	12956256	17	12956066
G	9/32	7.2	3	12954764	8	12954707	13	12956454	18	12956769
H	5/16	8.0	4	12954863	9	12954806	14	12956553	19	12956868
K	3/8	9.5	5	12954962	10	12954905	15	12956652	20	12956967

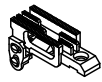



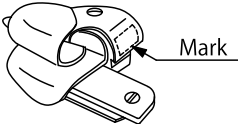
Description 品名			Feed dog asm.		Looper asm. (L)			Looper asm. (R)			Looper asm. (C)		
			送り歯(組)		ルーバ(L)(組)			ルーバ(R)(組)			ルーバ(C)(組)		
Needle gauge size 針幅													
Code ゲージ 記号													
	inch	mm	Ref.No	Part No.	Ref.No	Part No.	Mark No.	Ref.No	Part No.	Mark No.	Ref.No	Part No.	Mark No.
E	7/32	5.6	21	12970059	26	12968558	1	28	12968855	1	30	12969150	1
F	1/4	6.4	22	12969952		↑	1		↑	1		↑	1
G	9/32	7.2	23	12970158		↑	1		↑	1		↑	1
H	5/16	8.0	24	12970257	27	12968657	2	29	12968954	2		↑	1
K	3/8	9.5	25	12970356		↑	2		↑	2		↑	1

TABLE OF EXCHANGING GAUGE PARTS (2)

No.	Parts No.	Parts name	Remarks	Level	Cons	Qty
1	12954665	WITH FINGER GUARD GAUGE, 7/32.				1
2	12954566	GAUGE SET 1/4 (WITH GUARD)				1
3	12954764	GAUGE SET 9/32 (FINGER GUARD)				1
4	12954863	GAUGE SET 5/16 (FINGER GUARD)				1
5	12954962	WITH FINGER GUARD GAUGE, 3/8				1
6	12954608	THROAT PLATE MH 7/32				1
7	12954509	THROAT PLATE MH (1/4")				1
8	12954707	THROAT PLATE MH 9/32				1
9	12954806	THROAT PLATE MH 5/16				1
10	12954905	THROAT PLATE MH 3/8				1
11	12956355	NEEDLE CLAMP 7/32" ASM.				1
12	12956256	NEEDLE CLAMP (1/4") ASM.				1
13	12956454	NEEDLE CLAMP 9/32" ASM.				1
14	12956553	NEEDLE CLAMP 5/16" ASM.				1
15	12956652	NEEDLE CLAMP 3/8" ASM.				1
16	12956165	PRESSER FOOT ASM.,7/32 MH.				1
17	12956066	PRESSER MH(1/4") ASM.,EXPORT				1
18	12956769	PRESSER MH(9/32") ASM.,EXPORT				1
19	12956868	PRESSER FOOT ASM. 5/16", MH				1
20	12956967	PRESSER FOOT ASM.,3/8 MH.				1
21	12970059	FEED DOG MH ASM. 7/32				1
22	12969952	FEED DOG MH(1/4") ASM.				1
23	12970158	FEED DOG MH ASM. 9/32				1
24	12970257	FEED DOG MH ASM. 5/16				1
25	12970356	FEED DOG MH ASM. 3/8				1
26	12968558	LOOPER L (1) ASM.				1
27	12968657	LOOPER L (2) ASM.				1
28	12968855	LOOPER R (1) ASM.				1
29	12968954	LOOPER R (2) ASM.				1
30	12969150	LOOPER C (1) ASM.				1

TABLE OF EXCHANGING GAUGE PARTS (3)

Description 品名			Folder asm. フォルダ (糸目)					
Needle gauge size 針幅			M297		M298		M299	
Mark			MH		H		XH	
Code ゲージ 記号								
	inch	mm	Ref.No	Part No.	Ref.No	Part No.	Ref.No	Part No.
E	7/32	5.6	1	MAM2970DDBA	6	MAM2980AABA	11	MAM2990AABA
F	1/4	6.4	2	MAM2970EEBA	7	MAM2980BBBA	12	MAM2990BBBA
G	9/32	7.2	3	MAM2970FFBA	8	MAM2980CCBA	13	MAM2990CCBA
H	5/16	8.0	4	MAM2970GGBA	9	MAM2980DDBA	14	MAM2990DDBA
K	3/8	9.5	5	MAM2970HHBA	10	MAM2980EEBA	15	MAM2990EEBA

The folder is not included in gauge set.
フォルダは、ゲージセットには含まれません。

Folder mark
フォルダ記号

M297 — Medium-weight (MS-1261M
Standard equipment)
M298 — Heavy-weight (Option)
M299 — Extra heavy-weight (MS-1261
Standard equipment)

中厚物用 (MS-1261M 標準装備)
厚物用 (オプション)
極厚物用 (MS-1261 標準装備)

TABLE OF EXCHANGING GAUGE PARTS (3)

No.	Parts No.	Parts name	Remarks	Level	Cons	Qty
1	MAM2970DDBA	FOLDER 7/32 MH				1
2	MAM2970EEBA	FOLDER 1/4MH				1
3	MAM2970FFBA	FOLDER 9/32 MH				1
4	MAM2970GGBA	HOLDER 5/16 MH				1
5	MAM2970HHBA	FOLDER 3/8 MH				1
6	MAM2980AABA	FOLDER 7/32 H ASM.				1
7	MAM2980BBBA	FOLDER 1/4 H ASM.				1
8	MAM2980CCBA	FOLDER 9/32 H ASM.				1
9	MAM2980DDBA	HOLDER 5/16 H ASM.				1
10	MAM2980EEBA	FOLDER 3/8 H ASM.				1
11	MAM2990AABA	FOLDER 7/32 XH ASM.				1
12	MAM2990BBBA	HOLDER 1/4XH ASM.				1
13	MAM2990CCBA	FOLDER 9/32 XH ASM.				1
14	MAM2990DDBA	FOLDER 5/16 XH ASM.				1
15	MAM2990EEBA	FOLDER 3/8 XH ASM.				1

LIST FOR INFORMATION OF CHANGE (1)

As to the place changed, refer to the corresponding Rev.No.
 When previous parts(Obsoleted part)and new parts(Added parts)are
 not interchangeable with each other:
 In this case,even obsoleted parts(D.)can be ordered with the
 obsoleted part number,so select the parts with changed dates and
 place your orders.

変更箇所は、該当Rev.No.版をご参照ください。
 部品の互換性がない変更の場合は、削除された品番でも、ご注文できます。

29161502
 No.1031-06 Rev.No.

*A:Added parts追加部品/D:Obsoleted parts削除部品/E:Erratum訂正

* Rev. No.	Page 頁	Ref. No.	Parts No. 品番	* Rev. No.	Page 頁	Ref. No.	Parts No. 品番
D 05	2	2	110-00403	A 06	2	2	229-02506
D 05	2	23	SS-4091010-SP	A 06	2	23	SS-4090815-SP
E 05	2	24	B1128-804-000	A 06	2	24	B1124-804-000
E 05	2	59	B1634-191-000	A 06	2	59	B1806-019-000
D 05	2	62	110-18603	A 06	2	62	229-20607
D 05	2	72	B3526-226-000				
				A 06	2	72	WP-0370316-SD
D 05	2	81	B3513-261-000				
				A 06	2	81	400-60166
D 05	2	82	CM-3002001-01				
				A 06	2	82	TA-1600406-R0
D 05	2	83	CM-3002001-A1	A 06	2	83	CM-3012000-02
D 05	2	85	CM-3002000-C1				
				A 06	2	85	229-01805
D 05	2	87	CM-3002000-B1				
D 05	4	1	115-50308	A 06	4	1	400-85675
D 05	4	3	129-38205	A 06	4	3	400-85671
D 05	4	5	B3107-804-000	A 06	4	5	119-57305
D 05	4	8	119-57008	A 06	4	8	119-56703
D 05	4	12	B2301-261-00A	A 06	4	12	400-85676
D 05	4	28	SS-4091010-SP	A 06	4	28	SS-4090815-SP
D 05	4	67	115-03604	A 06	4	67	400-38331
D 05	6	20	129-24809				
D 05	6	21	SS-6111610-SP				
D 05	6	36	B3501-019-0A0	A 06	6	36	400-26875
D 05	6	40	B3508-019-000	A 06	6	40	RO-0691801-00
D 05	6	42	B3501-019-000	A 06	6	42	400-26874
D 05	6	54	B1401-026-000	A 06	6	54	B1401-019-000
D 05	6	61	129-25954				
D 05	6	62	SS-8080310-TP				
D 05	6	64	129-77807				
D 05	8	5	SS-9151440-CP	A 06	8	5	SS-8150822-TP
D 05	8	11	B1411-552-0A0	A 06	8	11	229-06457
D 05	8	12	B1411-552-000	A 06	8	12	229-06408
D 05	8	22	B2326-019-000	A 06	8	22	B2330-019-000
D 05	8	29	MAM-2970CCBA	A 06	8	29	MAM-2970EEBA

LIST FOR INFORMATION OF CHANGE (2)

* Rev. No.	Page 頁 No.	Ref. No.	Parts No. 品 番	* Rev. No.	Page 頁 No.	Ref. No.	Parts No. 品 番		
D	05	8	33	129-77062					
D	05	8	48	B1214-019-000					
D	05	10	5	129-79258					
D	05	10	6	129-79357					
D	05	10	7	129-78656					
				A	06	10	5	B2115-191-000	
				A	06	10	6	B2116-191-000	
E	05	10	17	B2116-019-00A	A	06	10	17	B2116-191-00A
E	05	10	18	B2116-019-00B	A	06	10	18	B2116-191-00B
E	05	10	20	B2102-026-0A0	A	06	10	20	B2102-026-0A0-A
D	05	10	25	B2122-019-000	A	06	10	25	400-40608
D	05	10	48	SS-7080510-TP					
D	05	12	5	SS-6090910-TP	A	06	12	5	SS-7090910-TP
				A	06	12	9	SS-4080620-TP	
				A	06	12	10	SS-7090910-TP	
				A	06	12	14	SS-4080620-TP	
				A	06	12	15	SS-7090910-TP	
D	05	12	19	129-64508	A	06	12	19	400-80579
D	05	12	21	129-64706	A	06	12	21	400-80580
D	05	12	24	SS-6090910-TP	A	06	12	24	SS-7091110-TP
D	05	12	25	129-79258					
D	05	12	30	129-79357					
D	05	12	33	129-78656					
				A	06	12	25	WP-0450000-SD	
				A	06	12	40	WP-0450000-SD	
D	05	12	46	129-64508	A	06	12	34	400-80579
D	05	12	48	129-64706	A	06	12	36	400-80580
D	05	12	51	SS-6090910-TP	A	06	12	39	SS-7091110-TP
D	05	14	15	B3426-122-000	A	06	14	15	129-44906
D	05	14	17	B8514-180-000	A	06	14	17	129-44906
D	05	14	18	SS-9661120-CP					
D	05	14	19	110-24510	A	06	14	18	229-32453
D	05	14	20	SM-9062053-SR					
E	05	14	22	SK-3482500-SC	A	06	14	20	SK-3452500-SC
D	05	14	23	B3419-552-0A0-A	A	06	14	21	229-34251
D	05	16	1	B3301-261-0A0	A	06	16	1	401-11348

HOW TO MAKE USE OF THIS PARTS LIST

1.Explanation of codes

1)"*"mark.....means this part is changed from the previous parts book.

As to the details of the change, refer to the "List for information of change".

2)"#01".....refer to "Note" explanation at bottom of page.

2.Codes on the "Qty" column

- Each numeral indicates the number of parts required.
- "0.1" and "2.5" indicate the length (in meters) of the respective parts.

3.Parentheses mean that the corresponding part is a subpart that constructs an assembly part.

4.Dotted lines on the Figures indicate assembly parts.

1."注記"欄の記号説明

1) "*"印.....前回のパーツブックに比較して今回変更された部品を意味します。

変更内容は、"変更情報リスト"を参照してください。

2) "#01".....ページ下の"注記"の説明を参照してください。

2.数量欄の数字は、個数を表し、0.1、2.5等の数値は、長さ（単位メートル）を表します。

3.数量欄の（ ）は、組部品を構成している子部品であることを意味します。

4.イラストページの-----枠は、組構成であることを意味します。

NUMERICAL INDEX OF PARTS

PART NO	PAGE	REF NO.	PART NO	PAGE	REF NO.	PART NO	PAGE	REF NO.
10704203	2	28	12943700	4	73	12956355	30	11
11956703	6	8	12944906	24	17	12956454	28	13
11957305	6	5	12950507	2	32	12956454	30	13
12921003	2	3	12950606	2	12	12956553	28	14
12921201	2	19	12950705	2	1	12956553	30	14
12921409	2	20	12950804	2	4	12956652	28	15
12921607	2	25	12951000	2	16	12956652	30	15
12921904	8	62	12951505	8	61	12956769	30	18
12922001	8	63	12951950	4	75	12956868	30	19
12922704	2	26	12952008	4	76	12956967	30	20
12922803	8	51	12952255	2	30	12957064	14	31
12924502	10	19	12952552	2	29	12957064	28	17
12924718	10	24	12953907	12	60	12957163	28	16
12924718	14	44	12953907	28	7	12957262	28	18
12924767	10	23	12953964	28	2	12957361	28	19
12924767	14	42	12954004	28	6	12957460	28	20
12924809	14	30	12954061	28	1	12962601	20	67
12924916	10	27	12954103	28	8	12962809	18	40
12925004	10	29	12954160	28	3	12963005	20	59
12931507	20	61	12954202	28	9	12963062	20	53
12931606	20	60	12954269	28	4	12963807	22	27
12931705	20	64	12954301	28	10	12963906	22	28
12931903	20	52	12954368	28	5	12964300	22	29
12932000	4	54	12954509	12	61	12964409	22	32
12932109	4	55	12954509	30	7	12964607	22	35
12932158	4	53	12954566	30	2	12964805	22	33
12933719	14	33	12954608	30	6	12965000	22	26
12935516	6	34	12954665	30	1	12965059	18	4
12935607	6	41	12954707	30	8	12965059	22	16
12935805	6	47	12954764	30	3	12965059	28	22
12935904	8	68	12954806	30	9	12965158	28	21
12936217	6	44	12954863	30	4	12965257	28	23
12936506	8	49	12954905	30	10	12965356	28	24
12936803	6	29	12954962	30	5	12965455	28	25
12936902	6	33	12955407	10	31-65	12965513	16	46
12938304	6	6	12955506	10	33-66	12965703	2	40
12939500	8	54	12955803	2	33	12966008	6	40
12939609	8	55	12956066	14	6	12966107	6	39
12939708	8	56	12956066	30	17	12966206	6	38
12939807	8	57	12956165	30	16	12966305	6	35
12939906	8	58	12956256	10	55	12966503	14	40
12940102	4	64	12956256	12	55	12966552	14	39
12941100	22	13	12956256	28	12	12966602	6	9
12942009	22	3	12956256	30	12	12966701	6	13
12943106	10	15	12956355	28	11	12966800	2	15

NUMERICAL INDEX OF PARTS

PART NO	PAGE	REF NO.	PART NO	PAGE	REF NO.	PART NO	PAGE	REF NO.
12966909	2	43	12978102	12	33-66	B110419100C	4	69
12967006	2	44	22901805	4	85	B11041910A0	4	66
12967105	2	45	22902506	2	2	B1124804000	2	24
12967204	6	24	22906408	14	12	B1127026000	14	7
12967303	6	21	22906457	14	11	B1130051000	2	38
12967402	6	26	22920607	4	62	B1134850000A	2	35
12967501	2	17	22932453	24	18	B1135850000	2	36
12967600	6	15	22934202	24	22	B1140019000	4	79
12967758	8	53	22934251	24	21	B1156019000	4	61
12968004	18	10	22934301	24	23	B1157019000	2	31
12968103	14	1	22934400	24	24	B1161026000	2	10
12968202	14	3	22934509	24	25	B1161227000	10	34
12968509	22	2	22934608	24	26	B11620260A0	2	8
12968558	18	1	40026874	10	42	B1202512000	10	9
12968558	22	1	40026875	10	36	B1203512000	10	26
12968558	28	26	40038331	8	67	B1203512000	14	43
12968558	30	26	40040608	18	25	B1207026000	10	6
12968657	28	27	40060166	4	81	B12070260A0	10	1
12968657	30	27	40080579	22	34	B1208019000	10	5
12968806	22	7	40080580	22	36	B12090190A0	10	2
12968855	18	2	40085671	6	3	B1219019000	2	21
12968855	22	6	40085675	6	1	B1222019000	10	18
12968855	28	28	40085676	6	12	B1236125BA0	10	3
12968855	30	28	40085784	26	8	B1401019000	12	54
12968954	28	29	40085785	26	11	B1402026B0G	10	45
12968954	30	29	40085788	26	15	B1404026B0G	12	53
12969101	22	12	40085789	26	14	B1408038000	10	4
12969150	18	3	40085790	26	16	B14090190B0	12	50
12969150	22	11	40085791	26	17	B1411019000	10	13
12969150	28	30	40085792	26	13	B1412038000	10	12
12969150	30	30	40085793	26	12	B1418019000	12	51
12969309	22	8	40085794	26	4	B1501019000	14	17
12969903	22	31	40085795	26	3	B1502019000	14	9
12969952	18	19	40085796	26	10	B1503026000	14	16
12969952	22	30	40096325	26	9	B15040190A0	14	14
12969952	30	22	40096326	26	7	B1506019000	14	19
12970059	30	21	40096327	26	5	B1534816000	8	64
12970158	30	23	40106574	26	6	B1601026000	18	38
12970257	30	24	40106575	26	2	B1602019000	20	66
12970356	30	25	40106577	26	18	B1606191000	20	65
12970406	4	80	40106578	26	19	B1610019000	18	39
12976601	28	31	40111348	26	1	B1621261000A	20	63
12976700	28	32	A116100100B	14	23	B1622541000	4	56
12976809	28	33	B110419100A	4	67	B1623191000	20	58
12978003	12	31-65	B110419100B	4	68	B1624191000	20	54

NUMERICAL INDEX OF PARTS

PART NO	PAGE	REF NO.	PART NO	PAGE	REF NO.	PART NO	PAGE	REF NO.
B1625191000	20	57	B3421012000	24	19	RE1200000K0	16	47
B1626191000	20	56	B3502019000	10	38	RO040100210	4	57
B1635191000	18	34	B3503019000	10	39	RO061180100	18	41
B1802019000	14	35	B3504019000	10	37	RO068190100	4	52
B1803019000	14	36	B3510019000	10	10	RO069180100	10	40
B1805019000	4	48	B3541012000	10	11	RO095200100	18	30
B1806019000	4	59	B3701019000	24	3	RO098240100	10	35
B18080190A0	14	37	B8101191000	24	13	SD0380551SL	2	37
B1901026000	12	48	B81011910A0	24	10	SD0450211SP	24	6
B20012610A0	18	35	B81021910A0	24	11	SD0790431SP	24	2
B2002026000A	18	27	B8511180000	24	14	SK3412001SE	26	22
B20060190A0	18	32	CM300200001	4	86	SK3452500SC	24	20
B2101261000A	20	47	CM301200002	4	83	SM4051001SE	26	21
B21020260A0A	18	20	CM500300001	4	71	SM4051405SE	26	20
B21032610A0	20	49	CQ252000000	10	44	SM9061203SE	24	27
B2105019000	18	45-46	CQ300000000	12	47	SS1090510SP	10	30
B210501900A	20	45-46	MAM2970DDBA	32	1	SS2060510SP	6	22
B2106026000	18	7	MAM2970EEBA	14	29	SS2110920TP	12	59
B2107019000	18	23	MAM2970EEBA	32	2	SS3060410SP	2	27
B2108026000	18	43	MAM2970FFBA	32	3	SS3090610SP	2	39
B2115191000	18	5	MAM2970GGBA	32	4	SS4080620TP	22	14
B2116191000	18	6-17-18	MAM2970HHBA	32	5	SS4090815SP	2	23
B211619100A	18	6-17-18	MAM2980AABA	32	6	SS4090815SP	6	28
B211619100B	18	6-17-18	MAM2980BBBA	32	7	SS4091010SP	2	9
B21230260A0	18	11	MAM2980CCBA	32	8	SS4110815SP	2	13
B2208019000	6	30	MAM2980DDBA	32	9	SS4120915SP	2	6
B2310019000	6	2	MAM2980EEBA	32	10	SS4622340SP	6	18
B2315019000	24	5	MAM2990AABA	32	11	SS5060410SP	6	23
B2317019000	24	7	MAM2990BBBA	14	28	SS5090420SP	6	45
B231919100A	24	4	MAM2990BBBA	32	12	SS5090610SP	4	50
B2321019000	24	9	MAM2990CCBA	32	13	SS5090710SP	2	11
B2322019000	24	1	MAM2990DDBA	32	14	SS5091020SP	2	42
B2324261000	14	25	MAM2990EEBA	32	15	SS5110810SP	4	77
B2326019000	14	24	MC380001200	12	63-64	SS5660440SP	10	41
B2327019000	14	20	MC380001300	12	58-62	SS5820540SP	4	78
B2328019000	14	27	MUY128N1900	12	63-64	SS6060210SP	6	31
B2329019000	14	21	MUY128N2100	12	58-62	SS6090540SP	2	46
B2330019000	14	22	NM6050001SE	26	23	SS6090670TP	14	13
B2402019000	6	16	NS6110310SP	6	11	SS6092120SP	10	43
B2421019000	6	19	NS6110350SP	8	59	SS6110480SP	4	70
B2502019000	18	8	NS6120310SP	14	26	SS6110610TP	2	5
B2503019000	18	28	NS6150310SP	18	13	SS6110610TP	8	52
B25050190A0	18	14	PS0250081K0	20	55	SS6110610TP	14	4
B3112704000	6	7	PS0500202KP	6	32	SS6111610SP	14	32
B3126012000	6	4	RE0400000K0	4	58	SS6122030SP	2	18

NUMERICAL INDEX OF PARTS

PART NO	PAGE	REF NO.	PART NO	PAGE	REF NO.
SS6122030SP	18	16	SS8110410TP	18	62
SS6151220SP	10	8	SS8110410TP	20	62
SS7060510SP	6	17	SS8110422TP	18	42
SS7080510TP	18	22	SS8110510SP	18	44
SS7090510SP	6	20	SS8111160SP	6	10
SS7090510SP	22	37	SS8150310SP	10	46
SS7090520SP	6	27	SS8150310SP	14	10
SS7090530SP	6	70	SS8150310SP	18	29
SS7090530SP	8	70	SS8150410SP	18	31
SS7090530SP	10	16	SS8150710SP	10	25
SS7090710SP	2	47	SS8150710SP	14	45
SS7090710SP	6	25	SS8150710SP	18	24
SS7090710SP	14	8	SS8150822TP	14	5
SS7090850SP	6	43	SS8151150SP	18	9
SS7090910SP	2	34	SS8152030SP	10	32
SS7090910SP	12	52	SS8660410SP	10	7
SS7090910TP	12	49	SS8660522TP	10	28
SS7090910TP	22	15	SS8660612TP	20	50
SS7090920SP	18	21	SS9151210TP	24	12
SS7091110SP	14	18	SS9182010TE	24	16
SS7091110TP	22	39	SS9284043CP	4	74
SS7091410SP	14	2	TA1250406R0	2	7
SS7110710SP	4	65	TA1600406R0	4	82
SS7110710SP	8	60	WP0370316SD	4	72
SS7110710SP	24	8	WP0371016SD	6	69
SS7110830SP	14	34	WP0371016SD	8	69
SS7110830SP	18	26	WP0450000SD	22	40
SS7110840SP	6	66	WP0450801SD	2	41
SS7110840SP	8	66	WP0531001SC	26	24
SS7111110TP	14	15	WP1612616SE	26	25
SS7111110TP	18	51	WS0510002KN	26	26
SS7111110TP	20	51			
SS7111120SP	4	60			
SS7111410SP	8	48			
SS7120910SP	10	14			
SS7151210SP	2	87			
SS7151210SP	4	87			
SS7621040SP	18	37			
SS7740740SP	4	51			
SS7740740SP	10	17			
SS8080310TP	10	56			
SS8080310TP	12	56			
SS8080610SP	10	57			
SS8080610SP	12	57			
SS8110310SP	14	41			