

## List of works



1 *Splinter Array 2*, 2016  
Powdercoated mild steel,  
stainless steel  
\$4,800



2 *Splinter Array 6*, 2020  
Patinated mild steel  
\$2,900



3 *Splinter Array 7*, 2020  
Powdercoated mild steel  
\$3,800



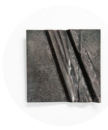
4 *Splinter Array 8*, 2020  
Powdercoated mild steel  
\$4,900 (optional plinth \$250)



5 *Departed Trajectory 3*, 2017  
Powdercoated aluminium  
\$5,200 (optional plinth \$250)



6 *Triple Junction 2*, 2017  
Corten steel, patinated  
\$6,400



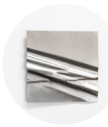
7 *Fragment Ascent #1*, 2020  
Stainless steel, patinated  
\$990



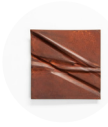
8 *Fragment Ascent #2*, 2020  
Brass, patinated  
\$990



9 *Fragment Ascent #3*, 2020  
Corten steel, patinated  
\$990



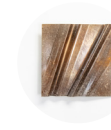
10 *Fragment Ascent #4*, 2020  
Stainless steel, patinated  
\$990



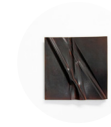
11 *Fragment Ascent #5*, 2020  
Stainless steel, patinated  
\$990



12 *Fragment Ascent #6*, 2020  
Stainless steel, patinated  
\$990



13 *Fragment Ascent #7*, 2020  
Brass, patinated  
\$990



14 *Fragment Ascent #8*, 2020  
Corten steel, patinated  
\$990



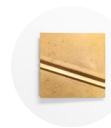
15 *Fragment Ascent #9*, 2020  
Brass, patinated  
\$990



16 *Fragment Ascent #10*, 2020  
Corten steel, patinated  
\$990



17 *Fragment Ascent #11*, 2020  
Stainless steel, patinated  
\$990



18 *Fragment Ascent #12*, 2020  
Brass, patinated  
\$990