



c|r|a|f|t
| a d +

craft + design centre

annual
report

2012

Contents

1

OVERVIEW	2
PRESIDENT REPORT	3
CRAFT ACT PATRONS	6
2012 AT A GLANCE	6
KEY MILESTONES AND ACHIEVEMENTS	11
COLLECTIONS	12
INTERNATIONAL CONNECTIONS	14
Foodjects: Design and the New Cuisine in Spain	15
Tree Museum international exchange	15
2013 International artist-in-residence program	15
Domestic Renewal: a table re-set	15
HERITAGE, ARTS AND THE ENVIRONMENT	17
Talking water: artist-in-residence	17
INDIGENOUS CRAFT AND DESIGN	21
Selling Yarns 3: Weaving the nation's story	21
Canberra artist in Burley Griffin international memorial ceremony	21
Artist-in-residence 2013	21
NEW GENERATIONS – BUILDING SUSTAINABILITY	23
Connecting business, industry and micro-enterprise	23
Centenary of Canberra – a legacy of good design	23
Emerging Contemporaries	24
Behind the Scene	24
Maker to Counter	24
Craft ACT Shop	25
Out on the Patio	28
INNOVATION AND RESEARCH	29
Embracing Innovation	29
Research partnerships	29
MARKETING AND MEMBERSHIP	32
Capital of Culture	32
pod	32
Art Not Apart	35
Digital outreach	35
Member highlights	35
Member exhibitions	35
SUPPORTING CREATIVES	37
Curators	38
Writers	39
Artists – exhibition program	43
Artists – showcases	44
Artists – public program	44
COLLABORATIONS, PARTNERSHIPS AND ALLIANCES	45
MANAGEMENT COMMITTEE	47
STAFF, INTERNS AND VOLUNTEERS	49
THANK YOU	52

Craft ACT: Craft and Design Centre

Level 1, North Building,
180 London Circuit,
Canberra ACT 2601

PO Box 992, Civic Square ACT 2608

T. [02] 6262 9333

F. [02] 6262 9666

Gallery and Shop hours:

Tuesday–Friday 10.00am–5.00pm

Saturday 12.00pm–4.00pm

Office hours:

Monday–Friday 9.00am–5.00pm

Published by Craft ACT: Craft and Design Centre

Edited by Avi Amesbury

Designed by Woro Larasati, 2B Advertising and Design

Printed by Instant Colour Press

ABN: 33 314 092 587

Craft ACT: Craft and Design Centre is supported by the ACT Government;
the Visual Arts and Craft Strategy - an initiative of the Australian Government
and all state and territory governments; and the Australia Council for the Arts -
the Australian government's arts funding and advisory body.

Member of the network of Australian Craft Design Centres (ACDC)

Cover image: Exhibition opening

Elements: metal, 2011

Photographer: Art Atelier Photography

www.craftact.org.au

Overview

Focusing in 2012 on building capacity through local and national relationships and linkages, existing relationships were strengthened and new partnerships developed. Through these linkages Craft ACT: Craft and Design Centre was successful in building recognition as a centre of excellence and raising the profile of Australian craft and design and makers.

A further focus in 2012 was to build sector sustainability and increase revenue to artists, seeing significant increases over 3 years from 2010.

[01] *Exhibition opening*
Elements: Metal, 2011
Photograph Art Atelier



President Report

2012 saw Craft ACT: Craft and Design Centre broaden its reach into the craft and design community of Canberra, Australia and internationally, create new links to industry and government and build on the successes of previous years.

One of our many achievements in 2012 was to launch the suite of official memorabilia for the Centenary of Canberra in 2013. This was the culmination of a design competition, a Centenary project administered by Craft ACT, which provided seed money to local artists to design and develop, in partnership with local industry, five products for the centenary year. Robyn Archer AO, Creative Director of the Centenary of Canberra officially announced the 5 winners of the competition at Canberra's 99th birthday celebrations. ACT Chief Minister Katy Gallagher championed the project by wearing Sean Booth's winning brooch design, inspired by the territory's borders.

Leading up to the Centenary in 2013, Craft ACT has presented *Designing a Capital: Crafting a City*, an annual program of exhibitions and events that probe and explore the contribution of

craft and design to the culture and heritage of the national capital. The highlight of the program in 2012 was the *Talking water: artists-in-residence* program and forum that gave local and interstate artists time to live in and experience Canberra's pristine water catchment areas, which were fundamental to the choice of the site for Canberra.

It was great to travel out to the Nil Desperandum Homestead in the Tidbinbilla Nature Reserve and Gudgenby Ready-Cut Cottage in the Namadgi National park to share the landscape and hear the artists and the staff from ACT Parks and Conservation talking about the residency.

During Floriade the *Capital of Culture* bus took visitors on a city-wide tour of Canberra's art scene. It followed a tour of 25 galleries, arts associations and arts precincts located on a brilliant map designed by our own Kate Ward. It continues to be an excellent map to hand around.

The artistic program in 2012 was planned to coordinate exhibitions with local events and also include collaboration with artists and

institutions from around Australia and the world. The Centre developed, curated and hosted 17 exhibitions enhancing our profile as an exhibition venue on the local and national circuit and proving the voracity with which the staff work to enhance the profile of Craft ACT: Craft and Design Centre.

This brief space doesn't allow me to go into the details of all the 2012 exhibitions. Some highlights were the annual *Embracing Innovation* and *Emerging Contemporaries* exhibitions that focused on leading edge research into craft and the digital arts and sciences, and the work of burgeoning craft and design talent from ACT tertiary institutions and the Australian craft and design community. In August our collaboration and exchange with the Tree Museum, Canada, came to fruition in the *Landscapes and Place* exhibition.

Thank you to all the staff at Craft ACT: Craft and Design Centre charged with implementing the extremely busy 2012 program of exhibitions and events. It has been a highly successful year.

Sharon Peoples, President

Partnerships and linkages

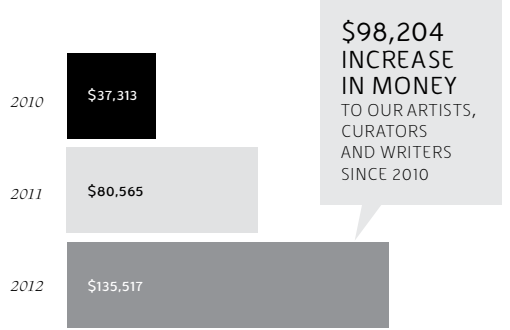
Local partnerships



National partnerships



Revenue to artists, curators and writers







[02]

We thank our Patrons, who have been exceptional ambassadors for Craft ACT: Craft and Design Centre.

Dr Robert Bell AM

Emeritus Professor
David Williams AM

Margaret Williams

Klaus Moje AO

[01] *Talking Water: artist-in-residence, 2012*
Artist-in-residence, Namadgi National Park
Photograph Art Atelier

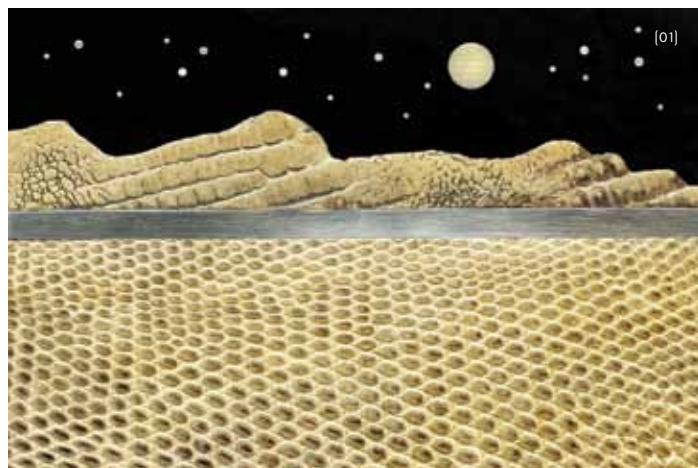
[02] *Talking Water: artist-in-residence, 2012*
Artist-in-residence, Marian Hosking
Photograph Art Atelier

[03] *Talking Water: artist-in-residence, 2012*
Artist-in-residence, Marian Hosking
Photograph Art Atelier



[03]

2012 at a glance



FEBRUARY

Parallels, solo exhibition by Accredited Professional Member, Barbara Rogers.

Space Dissolving, solo exhibition by emerging glass artist, Melinda Willis.

Elements: leather Guest curator Meredith Hinchliffe presented the sixth and final group exhibition in the dynamic *Elements* series to celebrate the Centre's 40th birthday.

MARCH

Centenary of Canberra – a legacy of good design the 9 finalists in the competition to design high quality objects to commemorate the Centenary of Canberra presented their concepts and designs to the Selection Panel, 5 winners announced.

Annual General Meeting.

Artist-in-residence information days were held at Gudgenby Visitor Centre and Tidbinbilla Visitor Centre.

Art Not Apart represented practitioners in the cultural festival that brings together artists from all backgrounds with over 4,500 visitors.



APRIL

Emerging Contemporaries an exhibition of award winning graduates and selected national emerging craft practitioners and designer makers who are making bold strides into the professional sphere.

Member Antonia Aitken, artist-in-residence at Gudgenby Ready-Cut Cottage in Namadgi National Park. Open day for the community to visit the residency site and engage with artist.

MAY

Embracing Innovations Volume 2, an exhibition showcasing craft practitioners and designer makers from across Australia who embrace digital technologies, research and design thinking in their creative practice.

Alphabet, independent curator Mel George invited 26 Australian glass artists to develop a work each based on one letter of the alphabet. Entire exhibition sold to Canberra Museum and Gallery.

Sanctum – Inga Svendsen, a body of work using clay imbued with colour and pattern to reflect different interactions with nature.

Art of Poetry, workshop and poetry reading exploring the creative exchange between the verbal and visual, word and image, language and object.

JUNE

Artist Marian Hosking, artist-in-resident at Nil Desperandum in Tidbinbilla Nature Reserve. Open day for the community to visit the residency site and engage with artist.

JULY

Signature a showcase for our strong, vibrant and highly skilled Craft ACT Accredited Professional Members.

Foodjects: Design and the New Cuisine in Spain, Sergi Vich, Assistant Curator, flew in from Barcelona to install this Spanish international travelling exhibition. Over four days he presented a curator's talk, media interviews, visited artist's studios and officially opened the exhibition.



Canberra Bells and Ginninderra Peppercress - Cathy Franzi. Ceramics with decoration based on Canberra's Centenary floral emblem and one of its most vulnerable plants.

Moraig McKenna – Ceramics, Craft ACT Award Exhibition.



AUGUST

Behind the Scenes CASHED UP: MONEY FOR ARTISTS Presented in partnership with Canberra Contemporary Art Space, a two day professional development program for members, artists and arts administrators.

Maker to Counter, special guests invited to meet artists and learn more about the creative industries. A Craft ACT Shop focus.

SEPTEMBER

Urban Forest, solo exhibition by Accredited Professional Member Dianne Firth.

Landscapes and Place, Tree Museum Canada and Craft ACT international exchange exhibition.

Capital of Culture, A Craft ACT initiative to produce and distribute 8,000 maps nation wide showing Canberra's secret cultural treasures, to coincide with Floriade.

[01] Judy Parker
Nocturnal Landscape, 1988
Exhibition: *Elements: leather*
Photograph courtesy of the artist

[02] Harriet Schwarzrock
Cumulus crescent, 2011
Exhibition: *Alphabet*
Photograph Art Atelier

[03] Ernest Perera
Aurea Collection, 2008
Stratified, pressed natural wood
Exhibition: *Foodjects: Design and the New Cuisine in Spain*
Photograph Jose Lopez

[04] Moraig McKenna
Basket, 2012,
Wood fired porcelain
Photograph Creative Image Photography



Member Marily Cintra, artist-in-residence at Gudgenby Ready-Cut Cottage in Namadgi National Park. Open day for the community to visit the residency site and engage with artist.

Member Christine Aitkins, artist-in-residence at Gudgenby Ready-Cut Cottage in Namadgi National Park. Open day for the community to visit the residency site and engage with artist.

Talking water forum held at CSIRO.

Centenary of Canberra program launched at the Canberra Theatre.

OCTOBER

pod, a Craft ACT initiative launched at Lonsdale Street Traders. A pop up space aimed at providing artists and makers with a platform to showcase and promote their practice.

Centenary of Canberra – a legacy of good design products released for sale.

NOVEMBER

Domestic Renewal: a table re-set Independent curator, Rohan Nichol.

Notations solo exhibition by Accredited Professional Member, Margaret Brown.

Out on the Patio fundraising event.

DECEMBER

Craft ACT Shop focus with a second store opening at pod in Lonsdale Street Trader throughout December 2012.

[01] Nil Desperandum Homestead Talking water: artist-in-residence

Key milestones and achievements

pod, a Craft ACT initiative launched at Lonsdale Street Traders. Revenue to artists ↑ \$10,000; Audiences ↑ 1,749 visitors in 3 weeks; Community awareness of Craft ACT Shop ↑.

Alphabet The entire exhibition sold to the Canberra Museum and Gallery for its permanent collection. Artist and curator fees ↑ \$24,000. A national survey of contemporary glass in Australia.

Centenary of Canberra - a legacy of good design Significantly the project has injected funds directly to craft practitioners and designer makers in Canberra. Key partnerships with national cultural institutions, industry and manufacturing. Artist fees ↑ \$65,000.

Artist-in-residence program - 4 artists undertook residency in 2012. Artist fees ↑ \$4,000. The artist-in-residence program attracted funding to host an international and an Indigenous artist in 2013.

Selling Yarns 3: Weaving the nation's story An international conference for Indigenous fibre and textile practice. The inaugural Indigenous Art Film Program developed. Program funding ↑ \$57,700

Project income increased from \$44,674 in 2011 to \$173,002 in 2012. ↑ 387%; Sponsorship increased from \$1,659 in 2011 to \$6,818 in 2012 ↑ 410%; Activity income in 2012 ↑ 146%

In-kind support from sponsors and partners ↑ \$310,000 Artist-in-residence program, Selling Yarns 3: Weaving the nation's story, Centenary of Canberra – a legacy of good design and National Arboretum Canberra retail outlet.

Increase in linkages ↑ 33 collaborative partnerships and sponsorships.

Capital of Culture connects 26 arts organisations and distributes 8,000 maps nationally.

17 exhibitions presented supporting 97 established and emerging makers, 14 writers and 4 curators. Public program supported 142 craft practitioners and designer makers. 4 internships completed. Membership retention 100%

Emerging Contemporaries, selected and award exhibition, increasing support for emerging makers. 14 artists represented from Queensland, Western Australia, New South Wales and the ACT. Visitors ↑

Research partnerships Access to collections within the national cultural institutions. Embracing Innovations, focusing on research and innovation in craft and design, attracted researchers from across Australia. Visitors ↑

International connections, touring exhibition Foodjects: Design and the New Cuisine in Spain presented by Craft ACT, the only Australian venue.



[01] Annette Blair Wis for watering can, 2011 Exhibition: Alphabet Photography Art Atelier

[02] Lucy Wanapuyngu String bag djerrk, 2001 Selling Yarns 3: Weaving the nation's story program



[01]

Craft ACT facilitates a collectors program that encourages national, state and territory collecting institutions and collectors to purchase craft and design. This focus contributes to the sustainability of the craft and design sector and returns revenue directly to artists. In 2012 the Centre was successful in securing purchases for a number of significant works to collectors and collecting institutions.

The entire exhibition, *Alphabet*, was purchased by the Canberra Museum and Gallery. Inspired by a love of word games, glass artist and independent curator Mel George invited 26 Australian glass artists to develop a work each based on one letter of the alphabet. The result was a showcase of the skills of the artists and the diversity of the medium of glass. An innovative and inspiring exhibition for children and adults alike aimed at making contemporary craft and design, and the gallery space accessible and lively.

Greg Daly, *Morning Mist*, 2011 was purchased by the Art Gallery of South Australia and Cathy Franzi, *Canberra Bells*, 2012 by the Canberra Museum and Gallery for their permanent collections.



[02]

[01] Tom Moore
Zebedee (Zanfirico Zebra), 2011
Blown and solid glass, Zanfirico cane
Exhibition: *Alphabet*
Photographer Art Atelier

[02] Tom Rowney,
Seven Seahorses Swimming in Slowly Swaying Seaweed, 2011
Hot-formed glass, gold leaf, aventurine glass
Exhibition: *Alphabet*
Photographer Art Atelier

2012

Revenue of \$32,000 returned to artists and contributed to sector sustainability through the Collector Program.

2011

Revenue of over \$125,000 was returned to artists and contributed to sector sustainability through the Collector Program and exhibition sales.

International connections



Foodjects: Design and the New Cuisine in Spain

Welcome to Canberra in winter. Spanish design professional and Assistant Curator, Sergi Vich, flew in from Barcelona in July to install the Spanish international travelling exhibition *Foodjects: Design and the New Cuisine in Spain*. Over the following four days he presented a curator's talk, media interviews, visited artist's studios and officially opened the exhibition. Craft ACT was the only Australian venue to host the international exhibition.

Tree Museum international exchange

Craft ACT: Craft and Design Centre, with the Tree Museum in Canada, developed the Tree Museum international exchange project. The project was established to foster links between Australia and Canada, offering a unique encounter of each country's landscape, environment and place, and to promote the diversity of artistic practice in an international context.

The project enabled four artists from Canada, Anne O'Callaghan, E.J. Lightman, Penelope Stewart, Jeannie Thib, and two artists from Australia, Bev Hogg and Trish Roan to travel on a reciprocal exchange program. The artists experienced first-hand the distinct environments of each country and developed a series of work in response to their experiences.

2013 International artist-in-residence program

The 2013 Craft ACT artist-in-residence program will support an international artist to undertake a one month residency at Gudgenby Ready-Cut Cottage in Namadji National Park. Connections developed with international arts organisations.

Domestic Renewal: a table re-set

An exhibition attracting international artists Professor Norman Cherry, Pro Vice Chancellor/Head of College of Arts, University of Lincoln UK and Bridie Lander [Lecturer] School of Jewellery, Birmingham Institute of Art and Design, Birmingham City University.

[01] Luki Huber
Cooking Mesh, 2006,
Exhibition: *Foodjects : Design and the New Cuisine in Spain*
Photograph Santi De Pablo

2012

Exhibition *afterLandscape* at Craft ACT: Craft and Design Centre featuring the 6 artists participating in the international exchange.

2011

Experimentation and research.

2010

Australian artists Bev Hogg and Trish Roan undertaking a residency at the Tree Museum in Canada. The 4 international artists undertook residencies at Canberra Glassworks, ANU School of Art, Megalo Print Studio and Ready-Cut Collage in Namadji National park.

INTERNATIONAL CONNECTIONS

Engage community in international exhibitions, floor talks and cultural exchanges

Expose Australian craft and design to international markets

Foster international collaborations, share ideas and form relationships

Strengthen relationships between Australia and Spain

Strengthen Australian and Canadian networks

Develop new connections with international arts organisations

Facilitate opportunities to work with Embassies

Increase access to Canberra

[01] Zoo Creative
Lorea Fruit Basket Copia, 2007
Exhibition: *Foodjects : Design and the New Cuisine in Spain*
Photograph Larrion An Pimoulier

[02] Marily Cintra
Talking water: artist-in-residence, 2012
Gudgeny Ready-Cut Cottage
Namadgi National Park



[01]

Heritage,
arts and the
environment

Talking water:
artist-in-residence

Talking water: artists-in-residence hosted 4 artists in residence, an education program and a catalogue drawing together the arts, heritage and the environment to promote and showcase Canberra's distinct natural and cultural landscape.

In 1908 the Yass-Canberra area was selected for the nation's capital as it best filled the requirements with regard to adequate water supply, climate and landform suitable for the building of a 'garden city'. Through discussion, engagement and interpretation, *Talking water* drew attention to the importance of Canberra's water catchment areas to the past, present and future of the city.

Four artists were offered one residency each at Ready Cut Cottages in the Namadgi National

Park in April and September 2012. The cottages are located in Canberra's catchment area and the artists responded to the theme *Talking water* to amplify Canberra's unique natural and cultural environment, and the significant value of these historic cottages to the Canberra community.

An open day was held for each of the artists while in residence so that the community could experience the beauty of their work and the environment.

The Talking water forum was held in September bringing together leaders in their fields, the artists-in-residence and the community to extend the conversation and share information about Canberra's water catchment areas and the place of water management in the broader national arena. Mark Sullivan, Managing Director of

ACTEW Corporation; Dr Peter Hairsine, Deputy Chief, Science Development from CSIRO; John Reid, Co-ordinator Environment Studio at the ANU School of Art and the Engaging Visions research project; and Brett McNamara, Manager, Rural District, National Parks, Reserves and Rural Lands, all leaders in environmental management and the arts, engaged in diverse conversations around water management bringing together the arts, heritage and the environment.

Artists in residence: Antonia Aitken, Marily Cintra, Christine Atkins and Marian Hosking.

Talking water: artist-in-residence was presented in partnership with ACT Parks and Conservation and supported by ACTEW Water.



[02]





[02]



[04]

Explored sensitive heritage sites and environmental areas through artists as interpreters and cultural workers.

Increases public awareness and understanding of environmental sustainability and water management issues.

Increased community understanding of national parks activities

Contributed to the telling of new stories about the cultural value of historic huts in the Australian Capital Territory.



[03]

Engage community in open days, artist talks and forums.

Strengthened existing networks between community and the arts, heritage and the environment.

2012

Four residencies undertaken by 3 Craft ACT members, Antonia Aitkins, Marily Cintry and Christine Atkins and 1 residency by national artist, Marian Hosking. *Talking water* forum held at CSIRO. Two open days held at Gudgenby Ready-Cut Cottage Namadgi National Park and two open days at Nil Desperandum Homestead the Tidbinbilla Nature Reserve. *Talking water* forum held at CSIRO.

2013

An exhibition catalogue to be produced featuring the artists in residence, an essay and abstracts of the papers presented at the forum. An exhibition of works inspired by the residency will be presented in the Craft ACT gallery. Further artist-in-residencies will be undertaken in 2013 with expressions of interest to international and Indigenous artists.

2014

An exhibition of works by the 2013 international and Indigenous artists in residence will be presented in the Craft ACT gallery and a catalogue produced.

Indigenous craft and design

Selling Yarns 3: Weaving the nation's story

Selling Yarns 3: Weaving the nation's story is the premier national forum for Indigenous textile artists in the country. It provides an opportunity which promotes cultural, technical and intellectual exchange between Indigenous and non-Indigenous industry stakeholders, as well as between generations of artists. The 2013 program aligns its activities with the Centenary of Canberra, Celebrating First Australians, and was developed in 2012 in partnership with The Australian National University. *Selling Yarns 3* presenting partner is the National Museum of Australia. The program has attracted financial support from Centenary of Canberra, The Ian Potter Foundation, Copyright Agency Cultural Fund, The Australian National University and the Australian Council for the Arts. It has attracted participation from remote and urban communities from across Australia who will deliver a stimulating program showcasing contemporary Indigenous craft and design.

Canberra artist in Burley Griffin international memorial ceremony

In September 2012 Centenary of Canberra creative director Robyn Archer, along with heritage adviser David Headon attended a special memorial ceremony at Walter Burley Griffin's grave in Lucknow India. In the ceremony, designed to commemorate the life of Walter Burley Griffin and strengthen the bonds between Canberra and Lucknow, Ms Archer poured a small amount of sterilised water from Lake Burley Griffin onto the grave. The vessel holding the water was especially created for the purpose by Craft ACT: Craft and Design Centre nominated artist Jenni Kemarre Martiniello.

Jenni's exquisite glass pieces reference traditional Indigenous Australian forms such as fish and eel traps and provide a medium for her to express her personal responses, as a contemporary Indigenous Australian, to cultural survival and Australia as the traditional land of her ancestors.

[01] Nil Desperandum Homestead Tidbinbilla Nature Reserve

[02] Christine Aitkins *Talking water: artist-in-residence*, 2012 Nil Desperandum Homestead Tidbinbilla Nature Reserve

[03] Antonia Aitkin *Talking water: artist-in-residence*, 2012 Gudgenby Ready-Cut Cottage Namadgi National Park

[04] Marian Hosking *Talking water: artist-in-residence*, 2012 Nil Desperandum Homestead Tidbinbilla Nature Reserve

[05] Jenni Martiniello *Dilibag and Bicornual basket*, 2012 Hot blown Bullseye glass canes Burley-Griffin ceremony in Lucknow, India



[05]

2012

Developing the 2013 conference, market day, workshop, and inaugural Indigenous Art Film and exhibition programs strengthened our relationship with the National Museum of Australia, our presenting partner who will host the 4 day event in 2013.

2013

Launch of *Selling Yarns 3* and the inaugural Indigenous Art Film program.

Artist-in-residence 2013

The Craft ACT 2013 artist-in-residence program will support an Australian Indigenous artist to undertake a residency at Gudgenby Ready-Cut Cottage in Namadgi National Park. The artist will be invited to undertake research through access to collections housed in the national cultural institutions in Canberra.

Community engagement in and foster understanding about Indigenous textile and fibre practice

Foster artistic and cultural exchanges

Build networks between national and local Indigenous communities and sites

Share ideas and form relationships that may lead to collaborations, joint projects and increased knowledge.

Create professional development opportunities

Strengthen professional practice through access to collections housed in the national cultural institutions in Canberra



[01]

**New generations
– building
sustainability**

Connecting business, industry and micro-enterprise

Centenary of Canberra – a legacy of good design

Robyn Archer AO, Creative Director of the Centenary of Canberra officially announced the 5 winners of the *Centenary of Canberra - a legacy of good design* competition in March.

“Quality craft and design have been a part of Canberra since its inception: the high standard of entries reflects this noble history. It was challenging to choose just five.”

*Robyn Archer AO,
Creative Director,
Centenary of Canberra*

Sean Booth, Fiona Hooton, Megan Jackson, Dan Lorrimer and Mitchell Brooks, and Kate Ward have engaged with industry to manufacture their products. The design brief encouraged new partnerships between creative industries and manufacturers, with a view to increasing the manufacturing capacity of the Canberra region. Their designs encapsulate the high level of creativity and craftsmanship that is abundant in the nation’s capital.



[02]

[01] Mavis Ganambarr weaving at *Selling Yarns 2: Innovation for sustainability*, 2009
Photograph Leise Knowles

[02] Centenary of Canberra
A legacy of good design winning designers
Dan Lorrimer and Mitchell Brooks
Photographer Art Atelier

2011

Successful in select tender to administer and manage the *Centenary of Canberra – a legacy of good design* competition. 10 finalists selected who received \$1,000 each to develop their design concept into a prototype.

2012

The 10 finalists present their prototype to a panel of experts. The 5 winners announced with \$55,000 going to the designers for the production on the initial run of the product.

2013

The official set of uniquely designed objects for the Centenary of Canberra launched. The products will be sold throughout 2013 to celebrate 100 years of Canberra as Australia’s national capital.

Engage community in artist talks and foster understanding of the creative industries

Revenue to artists ↑ \$65,000

Increase revenue in a competitive market

Broaden artistic skills

Support micro-enterprise and sustainable practice

Connect local industry with micro-enterprises

Strategic Business Plan and budget development

Explore new business models

Investigate industrial production methods

Centenary of Canberra – a legacy of good design is a centenary of Canberra project, presented by the ACT Government, with support from Business Industry Development and administered by Craft ACT: Craft and Design Centre. We thank Bradley Allen Love Lawyers and Canberra Business Point for their support.

Emerging Contemporaries

Emerging Contemporaries exhibits practitioners across the craft and design spectrum who are making bold strides into the professional sphere. The show expands upon the awards the *Craft ACT: Craft and Design Centre* offers to graduates from the Australian National University (ANU) School of Art, the University of Canberra, the Canberra Institute of Technology and the Sturt School for Wood, encompassing a national suite of works. The exhibition features the 2011 award recipients alongside selected emerging artists from across the country. It is an extraordinary snapshot of vision and ability, an early glimpse of talents sure to make their mark within the Australian and

international craft and design field. *Glen Martin, freelance writer, designer and promoter*

Behind the Scene

CASHED UP: MONEY FOR ARTISTS, was presented in partnership with Canberra Contemporary Art Space, and delivered a series of presentations and panel discussions by industry leaders and experts. The talks focused on making money, funding proposals, goal setting and business planning, legal responsibilities, networking and being media ready.

Maker to Counter

Dace and Professor Peter De Dekker, renowned design educators and supporters of the arts, hosted the evening, *Maker to Counter*. Special guests interested in learning more about the creative industries were invited to meet internationally recognised artist, Sabine Pagan and one of Australia's young prominent emerging artists, Alison Jackson. Aimed at engaging new audiences the artists presented beautiful handcrafted products and spoke about their professional practice.



[01]



[02]

Emerging practitioners profiled to new audiences

Increased exposure through off-site initiatives

Raising awareness of Australian craft and design

Local artists placed in a national arena

Award exhibitions recognising young talent

Developing new partnerships and networks

Opportunities for artists to connect the wider community with creative ideas

Increased awareness of the Craft ACT Shop

Attract new membership

Craft ACT Shop

The Craft ACT shop supports professional practice and sector sustainability and offers visitors the opportunity to purchase unique objects made by local and national craft practitioners and designer makers. Members and makers are also represented in the foyer Crucible Showcase and the Canberra Museum and Gallery in Civic, and the Diamant Hotel in the NewActon Arts Precinct.

A second store opened at pod in Lonsdale Street Trader throughout December 2012.

Community engagement through artist talks, professional practice and events

Revenue to artists in 2012 ↑ \$127,200

Supports micro-enterprise and sustainable practice

Engaging with new audience

[01] Emerging Contemporaries Sarah Murphy *Anemone*, 2011 Stainless steel, glass Photograph Angela Bakke

[02] Katrina Freene Recycled half-moon earrings (recycled tin and stainless steel), 2012 Photograph courtesy of the artist

2012

E-commerce in development for the online sale of *Centenary of Canberra – a legacy of good design* product.

2013

Craft ACT Shop online sales launched.



Out on the Patio

Supporters, stakeholders and members came together to enjoy an evening of cocktails, canapés and live music. Art works from members Alison Jackson, Tom Skeehan and Rozalie Sherwood, along with an entire signed collection of the *Centenary of Canberra – a legacy of good design* product, were auctioned on the evening. 50% of auction proceeds paid directly to the artists.



[02]

2012

Expressions of Interest opened for the inaugural, high-profile design and craft market, MODERN. Held in May 2013, this event is part of Craft ACT: Craft and Design Centre's program, *Designing a City: Crafting a Nation*.

2012

Nominated to co-host the 2015 Australian Ceramic Triennial with The Australian National University. The program development and planning meetings for the Triennial are underway.

Innovation and research

Embracing Innovation

The Centre curates the exhibition series, *Embracing Innovation*, which showcases practice-led research in the creative arts, with a particular focus on craft and design. The series has attracted craft and design researchers from nation-wide including the University of Canberra, The Australian National University, Royal Melbourne Institute of Technology, University of South Australia, and Curtin University in Western Australia.

"Investigations in developing new ideas, works and processes in the visual arts, design and crafts are concurrent with traditional ideas of research. Universities are acknowledging these areas, and in fact are requiring art school staff to be measured alongside traditional sciences. And at its heart the principal is creative thinking and the development of new ideas, whether it is practical based or oblique gallery work, it is applied research. The differences are that creative people are visual and cultural researchers. Their tools are different, their contextual language is different and their outcomes are different. But the principal of new ideas, manifesting in new thinking and objects, is the expression of the same research activity."

Richard Whiteley, opening guest speaker, *Embracing Innovation Volume*, May 2012

Leah Heiss proposes a model of a miniature robot that unravels itself through the digestive tract and takes data of the bodies intestinal properties for medical research.

Dr Rajiv Padhye and collaborator Lyndon Arnold intersperse Kevlar with wool to create a remarkable "ballistic" (that is, bullet-proof) material.

Greg Daly's lustrous glazes owe their shimmer to the nano-scale phenomenon of diffraction.

Research partnerships

The Craft ACT artist-in-residence program offers an opportunity for artists to undertake a one-month research component with access to collections housed in the national cultural institutions in Canberra including the National Museum of Australia, National Gallery of Australia and the National Library as well as CSIRO.

Engages community in current research and development in contemporary craft and design

Fosters and promotes excellence in Australian research

Access to collections within the national cultural institutions

Strengthen existing linkages and develop new partnerships

[01] Craft ACT Shop
Photograph Art Atelier

[02] Out on the patio
Alison Jackson
Copper Buddies, 2012
Copper, gold plated inside
Fabricated, hand raised
Photograph courtesy of the artist

[03] Peter Schumacher
Leaf Lamp, 2010
Birch, unbleached and starched wool.
Exhibition: *Embracing Innovation 2*
Photograph Maria Lindén for Green Furniture Sweden



[03]



Marketing and membership



[02]

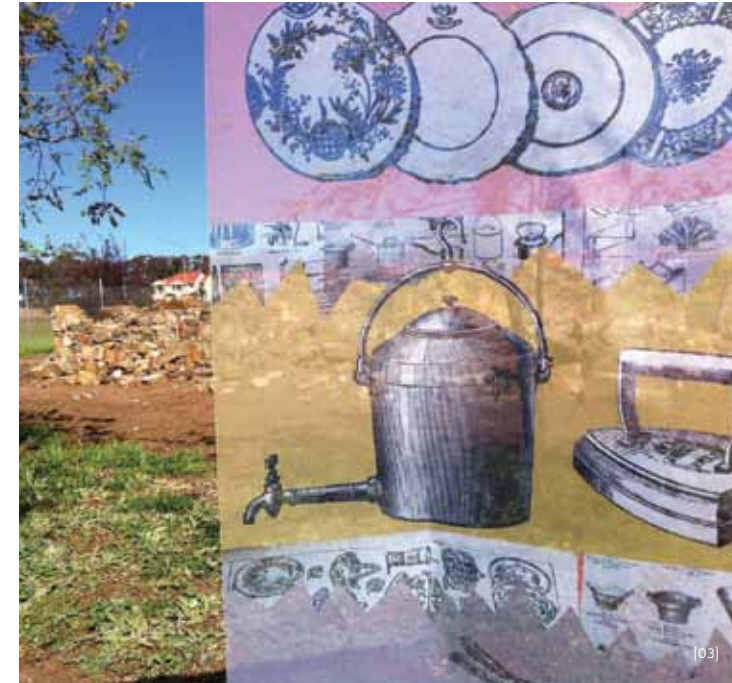
The Centre's communication and media strategy builds on the organisations existing presence as a key cultural centre and advocate for professional craft and design in Canberra, and Australia. The Centre's artistic program has increased visibility, and thereby revenue, for the organisation, its members and the sector more broadly, it has build organisational value increasing sponsorship, enhanced strong, long-term relationships with media experts and specialists; and increased public engagement and participation.

Capital of Culture

The Centre geared up for *Floriade Fever* launching the **Capital of Culture** initiative. The initiative produced and distributed 8,000 maps nation wide of Canberra's secret cultural treasures. The **Capital of Culture** map takes visitors on a journey through Canberra's dynamic and far reaching arts scene and the initiative included a double page lift-out in the Canberra times. Craft ACT collaborated with 26 arts organisations across Canberra.

pod

pod at Lonsdale Street Traders was launched in October, an exciting new Craft ACT initiative. Aimed at supporting members, emerging makers, artists, co-operatives, curators, writers and educators, **pod** provides a space to showcase and promote contemporary craft and design practice, whether it is a one-off event, an exhibition, a retail space, a workshop or a short-term studio space. Lonsdale Street Traders has been transformed from the old tyre and repair shop at number 27 into a creative hub for artists, retailers and an enthusiastic public.



[03]

[01] Leah Heiss, in collaboration with Dr. Paul Beckett, *Seed Sensor*, 2011
Additive manufactured polymer.
Exhibition: *Embracing Innovation 2*
Photograph Narelle Sheean

[02] Annie Trevillian
Farming, 2012
Digital print on polyvoile
Photograph Steve Keough Photography

[03] Annie Trevillian
Pantry, 2012
Digital print on polyvoile
Photography courtesy of the artist

"The very hip opening last night of Lonsdale Street Traders in Braddon has opened up a weird and wonderful new shopping experience for those chasing the unique and the trendy."

Ella Fisher,
The Canberra Times,
30 November 2012

"Thursday night was one of the most exciting events on the retail calendar for Canberra in some years – the launch of Lonsdale Street Traders..."

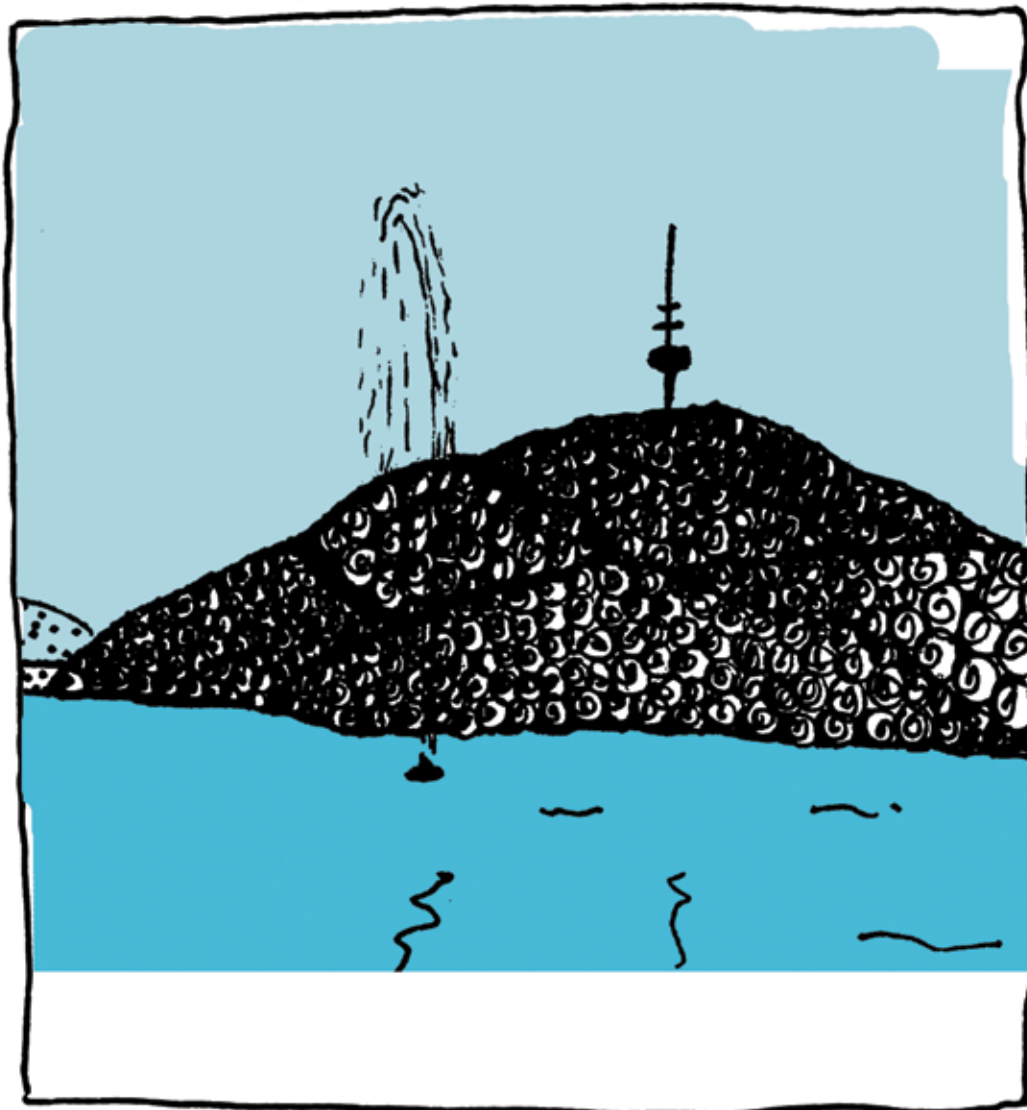
Amanda Whitley,
hercanberra.com.au,
2 December 2012

"Canberra has a vibrant arts community and Braddon seems to be the growing hub for arty young things."

Josh Becker, 666 ABC
Canberra, 29 October 2012

CANBERRA

CAPITAL OF CULTURE



2012

[01]

Art Not Apart

NewActon Arts Precinct hosts *Art Not Apart*, bringing together a wide spectrum of artists from all backgrounds, including musicians, poets, painters, sculptors, dancers, filmmakers, street artists, designers and all walks of life gather in beautiful spaces to talk and wander. Craft ACT represents craft and design practitioners, exposing them to new audiences and markets. Over 4,500 visitors attended the 2012 event.

Digital outreach

As well as being integral to the delivery of member services and administrative processes the Centre's website remains a key communication and marketing tool. The website acts as an interface for services such as online membership renewals, Accredited Professional Member portfolios and calendar of events. It enhances community engagement with the centre through automated reminders to exhibitions and events, and subscriptions to electronic media. The website promotes Canberra's excellence in contemporary craft and design and is accessible to a global market.

The Craft ACT website was hacked in 2012 which resulted in the loss of statistical data.

Member highlights

Valerie Kirk, critically acclaimed visual artist received the \$45,000 prestigious ACT Creative Arts Fellowship for 2013. Annie Trevillian was successful in her

submission to work with the ACT Heritage Unit to present creatively interpretive works for the heritage listed site, The Valley Ruin, as part of the 2012 Heritage Festival. **Julie Ryder** was 1 of 5 selected artists who projected work in Enlighten onto the National Library of Australia as part of the 2012 Canberra Festival. **Gilbert Riedelbauch, Blanche Tilden** and **Simon Cotterell** were represented in the international travelling exhibition, *Unexpected Pleasures: The Art and Design of Contemporary Jewellery* curated by Susan Cohn for the London Design Museum. *Black Magic* by **Barbara Rogers** was purchased by the Hong Kong Design Institute for their Fashion Archive. **Dianne Firth** was awarded the artists 2012 Canberra Critics Circle Award. **Ian Jones** and **Moraig McKenna** were invited to Singapore to oversee the firing of one of the last two remaining Dragon Kilns in the area. **Monique Van Nieuwland** undertook a four week professional residency at the Kolding School of Design in Denmark. Work by **Nikki Main**, *Abandon* was selected in the prestigious Ranamok Prize exhibition.

Member exhibitions

Signature

Each year the Accredited Professional Membership is invited to participate in a curated group exhibition. Each year this poses a challenge for the curator - how to theme and structure a collective of diverse artists and disparate works into a coherent exhibition narrative. *Signature*

showcased the strong, vibrant and highly skilled community of practitioners, many internationally renowned, forming the rich vein of Canberra's cultural identity. 20 Accredited Professional Members participated in the exhibition.

Parallels, a solo exhibition presented by Accredited Professional Member, **Barbara Rogers**, of contemporary textiles exploring the diversity and language of the graphic stripe pattern.

Urban Forest, a solo exhibition presented by Accredited Professional Member, **Dianna Firth**, explored the street trees of Canberra and their impact on forming the city's urban character.

Notations, a solo exhibition presented by Accredited Professional Member, **Margaret Brown**, interpreted the place of graffiti in ancient and contemporary society.

Canberra Bells and Ginninderra Peppercross, showcase exhibition by Accredited Professional Member, **Cathy Franzi**. This was a sell-out show with works purchased for the Canberra Museum and Gallery Collection.

Moraig McKenna – Ceramics, showcase exhibition by member **Moraig McKenna**, recipient of the Craft ACT Canberra Potters' Society Annual Exhibition Award.

[01] Capital of Culture designed by Kate Ward, 2012

MARKETING AND MEMBERSHIP

Capital of Culture and pod initiatives Visitors ↑

Makers represented Art Not Apart Visitors ↑ 4,500

33 members supported in the exhibition program

257 artists, curators and writers supported through the artistic program

4 solo exhibitions by Accredited Professional Members

17 reviews and essays published on the Craft ACT website

Increased subscriptions to digital communications ↑

Facebook visitors ↑

17 feature articles in the Canberra Times

2 feature articles in Art Monthly

2 feature articles in Textile Fibre Forum

2 exhibitions featured in Vogue Living

Website features d*hub, indesign.com, spainculture.org.au and artshub.

5 radio interviews

[01] Dianne Firth
Eucalyptus mannifera 1-12, 2012
 Viscose felt, bamboo wadding, cotton, polyester thread
 Exhibition: *Urban Forest*
 Photograph Creative Image Photography

2012

Research and exploration in the development of the 2013 collaborative project and exhibition, *A Very Sad Fish Lady* between artist and member Joy MacDonald, The Street Theatre and Craft ACT: Craft and Design Centre.

2012

Development of *Off the Square*, a member's exhibition at Belconnen Art Centre in 2013 with guest curator Peter Haynes.



Supporting
Creatives



[01]

Curators

Domestic renewal: a table re:set curated by Rohan Nicol

Independent curator Rohan Nicol invited craft practitioners and designer makers, architects and industrial designers to co-produce a table setting. The exhibition highlighted the value of collaboration and cross disciplinary ties, as a forum for the exchange of knowledge

Elements: leather curated by Meredith Hinchliffe

The sixth and final group exhibition in the dynamic *Elements* series celebrating the Centre's 40th birthday highlights invited artists Penny Amberg and Linda Davy and Colin Lee and Judy Parker over two

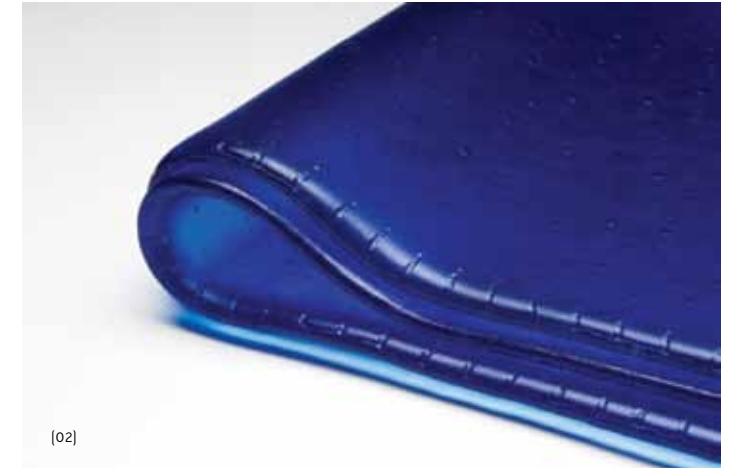
exhibition periods in the Crucible and Foyer Showcases.

Alphabet, curated by Mel George

Inspired by a love of word games, glass artist and independent curator Mel George invited 26 Australian glass artists to develop a work each based on one letter of the alphabet.

Craft Roots: Gapuwiyak Basketry, curated by Craft ACT Intern, Cara Hine

The exhibition, held at pod, brought together a collection of intricately crafted baskets from a group of artists represented by the Gapuwiyak Culture and Arts Aboriginal Corporation in East Arnhem Land.



[02]

Writers

The Art of Poetry hosted by poet, Dr Sarah Rice

Poet, visual artist and lecturer, Dr Sarah Rice in partnership with Australian Poetry Ltd, Canberra Museum and Gallery and Craft ACT invited poets, writers and visual artists to participate in a creative exchange between the verbal and visual, word and image, language and object.

Dr Sharon Peoples, Acting Convenor, Museums and Collections Program, ANU

Parallels
www.craftact.org.au/parallels and
Urban Forest www.craftact.org.au/spacedissolving

Annika Harding, freelance art writer, curator and gallery administrator at Canberra Contemporary Art Space

Space Dissolving
www.craftact.org.au/spacedissolving

Glen Martin, freelance writer, designer and promoter

Emerging Contemporaries
www.craftact.org.au/emergingcontemporaries

Ann McMahon, Curator, artist, arts writer

The Experience of Beauty
www.craftact.org.au/experienceofbeauty

Meredith Hughes, Canberra based textile artist, currently completing a PHD at the Australian National University, School of Art

Alphabet
www.craftact.org.au/alphabet

Dr Mitchell Whitelaw, Senior Lecturer, Faculty of Design and Creative Practice, University of Canberra

Embracing Innovation Volume 2
www.craftact.org.au/innovation

Diana Hare Curator and Exhibition Manager, Craft ACT: Craft and Design Centre

Signature www.craftact.org.au/signature
afterLandscape www.craftact.org.au/afterlandscape

Martín Azúa, Curator

*Foodjects: Design and the new
cuisine in Spain* www.craftact.org.au/foodjects

Janet DeBoos, Head of Ceramics Workshop School of Art, Australian National University

Notations www.craftact.org.au/notations

[01] Brook Morgan
Untitled grass circle, 2009
Exhibition: *The Experience of Beauty*
Photograph Andy Stevens

[02] Kirstie Rea
Preparing for a picnic (detail), 2011,
Exhibition: *Signature*
Photograph courtesy of the artist





[02]



Artists – exhibition program

Opened by Julie Ryder, textile designer, artist and educator

Parallels, Barbara Rogers
Space Dissolving, Melinda Willis

Opened by Meredith Hinchliffe, Curator and writer

Elements: leather, Colin Lee, Judy Parker, Linda Davy, Penny Amberg

Opened by Louise Doyle, Director, National Portrait Gallery

Emerging Contemporaries, Christine Atkins [ANU Exhibition award recipient], Sarah Carlson [ANU Exhibition award recipient], David Cummins [Sturt Exhibition award recipient], Elizabeth Delfs, Callum Matheson [Sturt Award Exhibition award recipient], Brendan Murphy, Sarah Murphy [ANU Exhibition award recipient], Jenny Papalexandris, Tom Skeehan, Belinda Smith, Graham Stutz [Sturt Exhibition award recipient], Amy Taylor [CIT Exhibition award recipient] and James Watt [University of Canberra Exhibition award recipient].

The Experience of Beauty, Brook Morgan

Opened by Richard Whiteley, Head of Glass, ANU School of Art.

Alphabet, Giles Bettison, Annette Blair, Jessica Casha, Alexandra Chambers, Scott Chaseling, Mel Douglas, Ben Edols and Kathy Elliott, Tim Edwards, Mark Elliott, Jacqueline Gropp, Jeremy Lepisto, Simon Maberley, Nadia Mercuri, KlausMoje, Tom Moore, Ruth Oliphant, Kirstie Rea, Trish Roan, Tom Rowney, Luna Ryan, Harriet Schwarzock, Brenden Scott French, Bridget Thomas, Richard Whiteley, Maureen Williams and Nick Wirdnam.

Embracing Innovation Volume 2, Stephen Barrass [UC], Greg Daly [ANU], Leah Heiss [RMIT], Brendan Murphy, Lan Nguyen-hoan, Dr Rajiv Padhye [RMIT] and Peter Schumacher [UniSA]

Sanctum, Inga Svendsen

Opened by Emeritus Professor David Williams, Craft ACT Patron

Signature, Avi Amesbury, Sarit Cohen, Linda Davy, Judi Elliott, Dianne Firth, Cathy Franzi, Robert Foster, Ruth Hingston, Morgan James, Nikki Main, Gail Nichols, Monique van Nieuwland, Marli Popple, Kirstie Rea, Gilbert Riedelbauch, Barbara Rogers, Luna Ryan, Julie Ryder, Oliver Smith and Nancy Tingey.

Canberra Bells and Ginninderra Peppercross, Cathy Franzi

Opened by Dr Sharon Peoples, Craft ACT President

AfterLandscape Australian artists, Bev Hogg and Trish Roan and Canadian artists, Anne O'Callaghan, E.J. Lightman, Penelope Stewart and Jeannie Thib.

Urban Forest, Dianne Firth
Moraig McKenna – Ceramics

Opened by Craig Bremner, Professor of Design, Charles Sturt University

Domestic Renewal: a table re-set, Alex Asch, Richard Blackwell, Norman Cherry, Ann Cleary, Sarah K and Liane Rossler, Guy Keulemans, Bridie Lander, Gini Lee and Sabine Pagan, Rohan Nicol, Wayne Simon, Jason Wade, Henry Wilson, Mel Robson and Kenji Uranishi.

Notations, Margaret Brown
Neon, Ky Curran and Emma Davies

[01] Melinda Willis
Liminal space I, 2010
Screen Printed, Fused and Cold-worked Glass, UV Cured Inkjet Print on Glass, Cold-worked Mirror and Float Glass
Exhibition: *Space Dissolving*
Photograph courtesy of the artist

[02] Cathy Franzi
Drooping She-oak, 2012
Accredited Professional Member
Exhibition: *Signature*

[03] Julie Ryder
Tea towels, 2012
Craft ACT Shop
Photograph Art Atelier



Artists – public program

Centenary of Canberra – a legacy of good design: Kate Ward, Dan Lorrimer and Mitchell Brooks, Sean Booth, Fiona Hooton, Megan Jackson, Julie Ryder, Gilbert Riedelbauch, David MacLaren and Heather Aspinall.

Talking water: artist-in-residence program: members Marily Cintra, Christine Aitkins and Antonia Aitken and national artist, Marian Hosking.

Foodjects: Design and the New Cuisine in Spain: Visiting international curator, Sergi Vich, studio visits with Accredited Professional Members Harriet Schwarzrock, Mathew Curtis and Gilbert Riedelbauch.

Artists – showcases

Diamant Hotel Showcase: Greg Daly, Harriet Schwarzrock, Chris Plumridge, Dimity Kidston, Sylvia Marris, Annette Blair, Oliver Smith, F!NK and Co. and Nadege Desgenetez.

Canberra Museum and Gallery Showcase: Robert Foster, Rachel Boyak, Tony Nankervis, Richard Raffan, Frank Deveson, Sinead Buckney and Simon Maberley.



Behind the Scene CASHED UP: MONEY FOR ARTISTS, sell out 2 day program with 50 artists and arts administrators attending each day.

Art Not Apart: Representing Craft ACT members to over 4,500 festival visitors.

Maker to Counter: Alison Jackson and Sabine Pagan.

pod at Lonsdale Street Traders: Representing Craft ACT members to 1,750 visitors in December.

Out on the Patio: Alison Jackson, Tom Skeehan and Rozalie Sherwood and Centenary of Canberra artists, Kate Ward, Dan Lorrimer and Mitchell Brooks, Sean Booth, Fiona Hooton and Megan Jackson.

Collaborations, partnerships and alliances



International – Embassy of Spain; Crafts Council UK, Canadian Crafts Council.

State and Territory – Centenary of Canberra Unit, artsACT, Parks and Conservation, ACT Heritage, Business and Industry Development Directorate.

The Ian Potter Foundation – Financial support *Selling Yarns 3*

The Copyright Agency Foundation – Financial support *Selling Yarns 3*.

MCS Accounting Pty Ltd – Financial support.

National Museum of Australia – Major presenting partner *Selling Yarns 3*, and retail partner *Centenary of Canberra – a legacy of good design*.

National Gallery of Australia – Retail partner for *Centenary of Canberra – a legacy of good design*.

The Australian War Memorial – Retail partner for *Centenary of Canberra – a legacy of good design* retail partner.

The National Portrait Gallery – Retail partner *Centenary of Canberra – a legacy of good design*.

National Library of Australia – Retail partner *Centenary of Canberra – a legacy of good design*.

CSIRO – In-kind support *Talking water: artist-in-residence program*.

The Australian National University – Financial support and major presenting partner *Selling Yarns 3*; co-host 2015 Australian Ceramic Triennial, and in-kind support *Designing a Capital: Crafting a Nation*.

University of Canberra – In-kind support *Designing a Capital: Crafting a Nation*.

[01] Centenary of Canberra *Centenary of Canberra – a legacy of good design* winning designer Megan Jackson

[02] Centenary of Canberra *Centenary of Canberra – a legacy of good design* winning designer Kate Ward

[03] Centenary of Canberra *Centenary of Canberra – a legacy of good design* winning designer Fiona Hooton

[04] Julie Ryder Accredited Professional Member Enlighten festival Canberra, 2012 Projection onto the National Library of Australia



[01]

HHO Events – Financial support
Selling Yarns 3: Weaving the nation's story.

ACTEW Water – Sponsor *Talking water: artist-in-residence program.*

ACT Parks and Conservation – Sponsor *Talking water: artist-in-residence program.*

Canberra Museum and Gallery – Partner *Behind the Scenes*; Partner *2013 Ashley Eriksmoen.*

Canberra Contemporary Art Space – Partner *Behind the Scenes*; Partner *Designing a Capital: Crafting a Nation*, Supporter *Capital of Culture.*

Canberra Glassworks – Supporter *Designing a Capital: Crafting a Nation, Capital of Culture*;

Centenary of Canberra – a legacy of good design.

Megalo Print Studio + Gallery – Supporter *Behind the Scene.*

Gallery of Australian Design – Supporter *Capital of Culture.*

Street Theatre – Partner *The [Very] Sad Fish-lady exhibition and puppetry performance, Behind the Scene.*

AbaF – presented at AbaF events, board connect; 2013 hosting event *Maker to Counter.*

Bradley Allen Love Lawyers – Major sponsor in-kind support *Centenary of Canberra – a legacy of good design*; National Arboretum Canberra retail outlet.

NewActon Art Precinct – Partner *Designing a Capital: Crafting a Nation and Modern market.*

Art Atelier Photography – in-kind support Artistic Program.

Diamont Hotel – Supporter exhibition showcases.

East Hotel – Retail partner *Centenary of Canberra – a legacy of good design.*

Design Craft - Supporter *Centenary of Canberra – a legacy of good design.*

Lonsdale Street Traders – **pod** initiative.

Australian Poetry Ltd – Partner *The art of Poetry.*

Art Guide Australia.

Management committee

Each member of the management committee brings a high level of expertise to Craft ACT and has given exceptional support throughout 2012. The shift towards stronger management and business skills has benefited the organisation enormously. We give a special mention to Stephanie von Gavel, our Vice-President, who has completed a full term of six years on the management committee. She has big shoes to fill with her legal expertise and people management skills. It will be sad to see her move on after her incredibly valuable intellectual

input and enthusiastic support, not only to the committee but also to the arts in the Territory. I sincerely thank all members for their contributions to the committee.

The staff and the management committee worked fruitfully together to review the Strategic Business Plan for 2013 to ensure that the organisation continued to respond to our members and our audiences. The plan aligns with our funding bodies' objectives while negotiating Craft ACT's own direction.

Sharon Peoples, President

[01] Kirstie Rea
Vegetables, 2011
Cast glass
Exhibition: *Alphabet*
Photograph Art Atelier

[02] *Maker to Counter*
Sabine Pagan
Reno, 2009
Stirling silver
Photograph Grant Hancock



[02]

MANAGEMENT COMMITTEE

Dr Sharon Peoples, President Internship co-ordinator in the Museums and Collections Program in Liberal Arts at the Research School of Humanities at the Australian National University	Arts Management, Education, Curatorial Practice	2010
Stephanie von Gavel, Vice-President Legal Counsel, CSIRO	Legal, Strategic Planning, Governance	2007
Lyn Valentine, Treasurer Certified Practising Accountant	Certified Practising Accountant, Project and Risk Management, Team Leadership	2011
Andrea Greenslade Curator, National Museum of Australia	Curatorial and Museum Practice, Occupational Health and Safety, Indigenous Communities	2010
Professor Peter de Dekker Director of the UC Polytechnic, Associate Dean International and Engagement and Head of Design in the Faculty of Arts and Design at the University of Canberra	Design Architect Europe and Australia, Design Education, International Relations	2011
Dr Ximena Briceño Artist and researcher	International Craft Design and Art History, Retail, Multicultural and Youth Communities	2011
Tim Bohm Founder and Creative Director 2B Advertising and Design	Design, Marketing and Advertising	2012
Simon Butt Chief Executive Officer Manteena Pty Ltd	Business Development, Strategic Planning, Project Management	2012

Staff, interns and volunteers

Staff

I briefly note the changes in the staff as they affect the whole organisation, members and the Management Committee. I warmly thank Diana Hare, Priya Rajasekhar, Amy Kerr-Menz, Jenny Shaw and Hamilton Darroch who left the organisation in 2012 and wish them the best in their future roles. I also extend my sincere thanks to our volunteers who assist in so many ways.

This year we welcomed Janel Laza who came with fresh visual approach as Operations Retail Manager of both Craft ACT Shop and **pod**, the new Craft ACT initiative at Lonsdale Street Traders in Braddon. Kate Ward who has

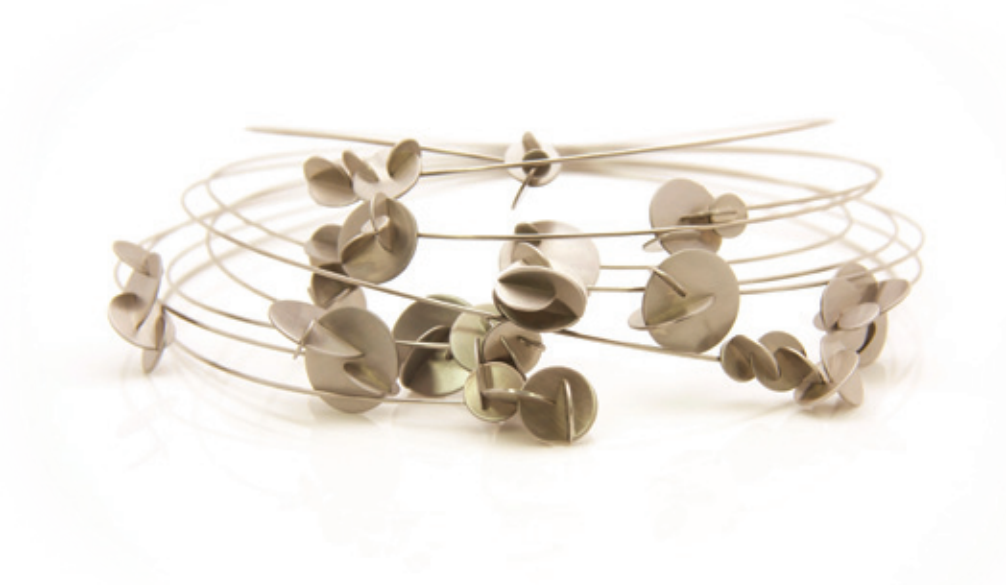
been with us on various projects stepped up to become Creative Design and Development Manager. Richard Wood was appointed the new Curator and Exhibitions Manager. We also welcomed Gwyneth Macnamara in a new role as Curator of Public Programs to manage projects, programs and membership services. Anna Yuan was appointed Financial Administrator.

Avi Amesbury continued with her strong organisational skills, fresh ideas and capacity for fiscal management in the position of Executive Director. Although there is uncertain economic outlook,

Avi has continued to maintain and build on key relationships with the Centre's stakeholders including members, audiences, funding partners, local, national and international organisations, politicians, media and business representatives. She has not only actively sought support from these agencies, but has drawn them into Craft ACT's activities.

Sharon Peoples, President

(01) Sarah Murphy,
Anemone, 2011
Stainless steel, glass
Exhibition: *Emerging Contemporaries*
Photograph Angela Bakker



Staff

Executive Director	Avi Amesbury	1.0
Financial Administrator	Anna Yuan	0.8
Financial Administrator	Priya Rajasekhar	
<i>Priya relocated to Melbourne with her family</i>		
Curator Exhibition Manager	Richard Wood	0.8
Curator Exhibition Manager	Diana Hare	
<i>After 7 years to service Diana left Craft ACT to take a position at the National Gallery of Australia</i>		
Curator of Public Programs	Gwenyth Macnamara	0.8
<i>A newly created position to manage public programs and membership services</i>		
Creative Design and Marketing Manager	Kate Ward	0.6
Communications Manager	Michelle Symons	
<i>Michelle left Craft ACT returning to the public service with the Commonwealth government</i>		
Communications Manager	Amy Menz-Kerr	0.7
<i>Amy returned to the ANU School of Art, taking the position of Student Administrator</i>		
Retail Manager	Janel Laza	0.6
Retail Manager	Jenny Shaw	
<i>Jenny resigned to start her own business, Handsome Pretty, at Lonsdale Street Traders</i>		

Casual staff

Project Manager	Hamilton Darroch
<i>Centenary of Canberra – a legacy of good design</i>	
Acting Public Programs coordinator	Nikki Main
Gallery Assistant	Danyka Van Burren
Retail Assistants	Sara Nathan-Truesdale Sam Cameron Louise Coxon

Interns

Cara Hine, Bachelor of Art [Art History and Curatorship], The Australian National University

Jessica Oliver, Post-graduate studies, Communications (online), Griffith University, QLD

Maria Kunz, Professional Practice, Australian National University, School of Art

Sarah Davis, Professional Practice, Australian National University, School of Art

Volunteers

Ashley Bauman
Cara Becker
Charles Walker
Christine Atkins
Deirdre Ward
Donna Vokes
Greta Piazzoli
Janet Aitken
Linda Davy
Louise Coxon

Audited Financial Reports

The audited financial reports are contained in a separate document and are available at the 2013 Annual General Meeting and on request

Volunteer hours in 2013 were 708 hours. An increase from 223 hours in 2012

Thank you

It has been a successful, dynamic and exciting year of unexpected change and opportunities. We thank our members, partners, sponsors and supporters whose contributions have made 2012 a great success. As we know, it is the team that makes an organisation fly and this year is no exception.

Avi Amesbury, Executive Director

Supported by:



Partners



Supporters



