

# ENCHANTRESS SHAWL

by Rebecca McKenzie @ragingpurlwind

  
**Skill:** intermediate

## Materials

- 2 Skeins DGY Lace Weight Silk Yarn Sparkle
- US 4 (3.5 mm) Circular Needles 29" (not included)
- Stitch markers (at least 1 removable)
- Row counter (not included)
- Tapestry Needle and Scissors (not included)

## Pattern Notes

- Finished Measures: 52" (132 cm) W x 16" (40 cm) D
- Gauge: 21 sts and 33 rows = 4" (10cm) in Stockinette Stitch
- This is a crescent shaped shawl that is worked flat from the top down with a lace border.



## Abbreviations

**CO:** Cast On

**BO:** Bind Off

**INC:** Increase

**K:** Knit

**K2TOG:** Knit Two Stitches Together As One (Decrease 1 St)

**(K1, Yo, K1):** In The Same St, Knit 1 Stitch, Yarn Over, And Knit 1 St Again (Increases 2 Sts) M- Marker

**P:** Purl

**PM:** Place Marker

**P2TOG:** Purl Two Stitches Together As One (Decrease 1 St)

**REM:** Remaining

**REP:** Repeat

**RM:** Remove Marker

**RS:** Right Side Or Front Of Work

**SM:** Slip Marker

**SKPO:** Slip 1 St Knitwise, Knit The Next Stitch, Pass The Slipped Stitch Over The Knit Stitch On The Right Needle

**ST (S):** Stitch(es)

**WS:** Wrong Side Or Back Of Work

**YO:** Yarn Over

## Pattern

### GARTER TAB

CO 3 sts. Knit 8 rows. Turn work 90 degrees and pick up 4 sts from the side of the work. Turn work 90 degrees again to cast on edge and pick up 3 sts. You will have 10 sts on your needles.

**Set Up Row 1 (WS):** K3, pm, p4, pm, K3. (2 st markers total, 10 sts)

### BODY

#### STOCKINETTE STITCH ROWS

**NOTE:** Place removeable marker on RS.

**Row 1 (RS):** K3, sm, (k1, yo, k1) in one st, k until 1 st before m, (k1, yo, k1) in one st, sm, k3. (Inc 4 sts)

**Row 2 (WS):** K3, sm, yo, p to m, yo, sm, k3. (Inc 2 sts)

Rep Rows 1 and 2 forty two more times (44 times total). You will have 142 sts.

# ENCHANTRESS SHAWL

by Rebecca McKenzie @ragingpurlwind



## Pattern (CONT.)

### EYELET ROWS

**Row 1 (RS):** K3, sm, (k1, yo, k1) in one st, \*yo, k2tog; rep from \* until 1 st before m, (k1, yo, k1) in one st, sm, k3. (Inc 4 sts)

**Row 2 (WS):** K3, sm, yo, p to last m, yo, sm, k3. (Inc 2 sts)

Rep Rows 1 and 2 once more. (2 times total). (154 sts)

Work Rows 1-2 of the Stockinette Stitch Rows 28 times. (322 sts) Work Rows 1-2 of the Eyelet Rows 2 times. (334 sts) Rep Row 1 of Eyelet Rows once more. (338 sts)

Next Row (WS): K3, rm, p to m, rm, k3. (338 sts; No Increases on this row)

### CANDELABRA LACE BORDER

**Row 1 (RS):** \*(skpo, yo) x 3, k1, (yo, k2tog) x 3; rep from \* to end. Row 2, 4, 6, 8, 10, 12: Purl.

**Row 3:** \*K1, (skpo, yo) x 2, k3, (yo, k2tog) x 2, k1; rep from \* to end. Row 5: \*K2, (skpo, yo) x 2, k1, (yo, k2tog) x 2, k2; rep from \* to end. Row 7: \*K3, skpo, yo, k3, yo, k2tog, k3; rep from \* to end.

**Row 9:** \*K4, skpo, yo, k1, yo, k2tog, k4; rep from \* to end.

**Row 11:** \*K6, yo, skpo, k5; rep from \* to end.

You will have 338 sts.

### PICOT BIND OFF

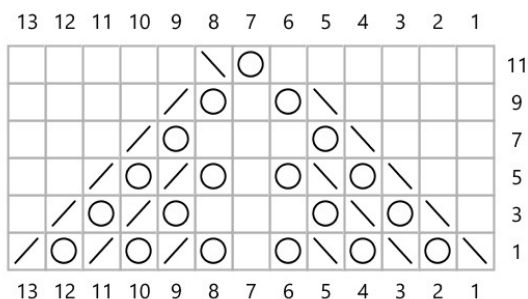
**NOTE:** Use cable cast on method.

CO 2 sts, BO 8 sts, \*slip rem st on right-hand needle onto left-hand needle, CO 2 sts, BO 15 sts; rep from \* to last 5 sts, slip rem st on right-hand needle onto left-hand needle (6 sts on left needle), CO 2 sts, BO 6 sts, slip rem st on right-hand needle onto left-hand needle (2 sts on left needle), CO 2 sts, BO all rem sts.

Cut yarn leaving a 6" tail.

### FINISHING

Weave in all ends. Block.



#### Key

- RS: knit  
WS: purl
- RS: sl1, k1, pssso  
WS: ssp
- yo
- RS: k2tog  
WS: p2tog