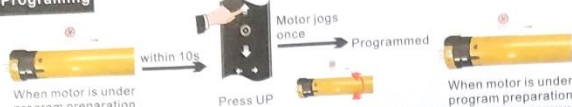


Settings

1. Get into program preparation



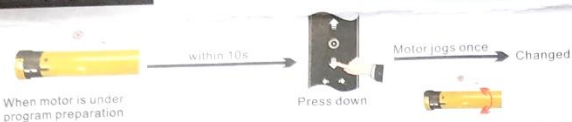
2. Programing



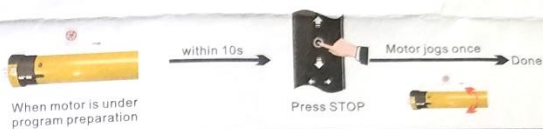
3. Deleting single/all codes



4. Changing direction



5. Dot/continuous moving switching



E Adjust Journey Position

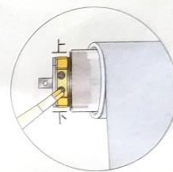
Installation 1



A. When motor limit head is left side, blinds outward rolling move

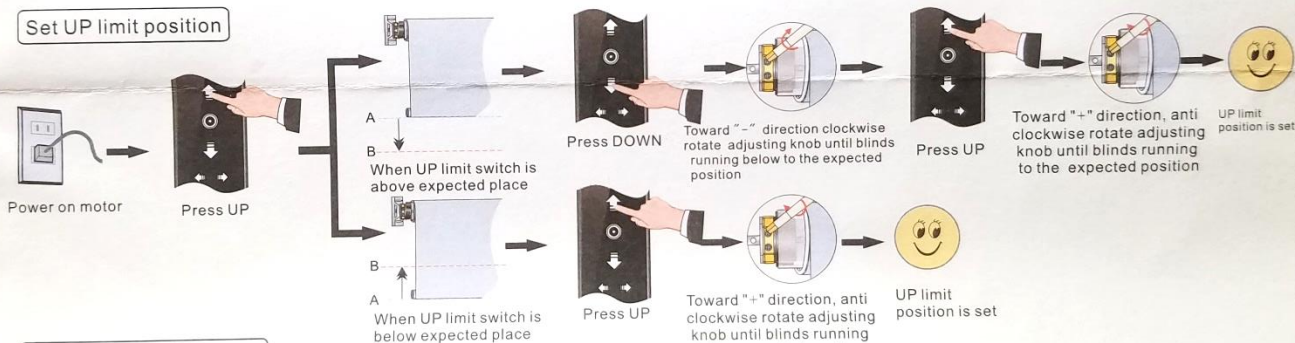


B. Adjust the UP adjusting knob to change UP limit position

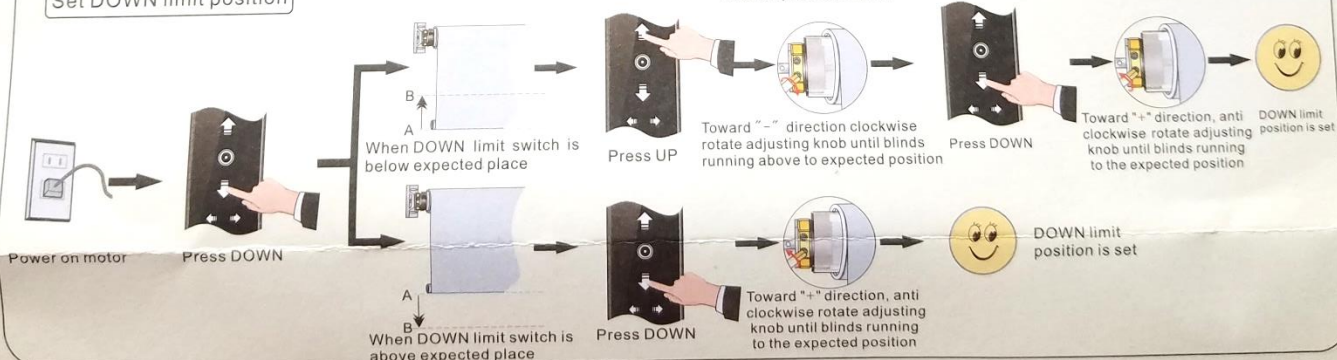


C. Adjust the DOWN adjusting knob to change DOWN limit position

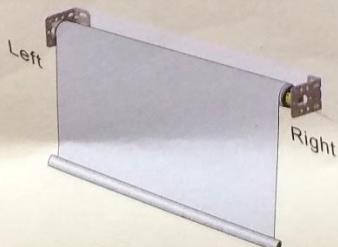
Set UP limit position



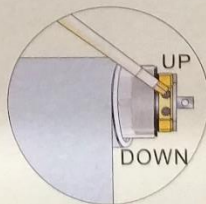
Set DOWN limit position



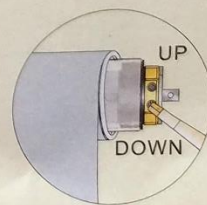
Installation 2



A. When motor limit head is right side, blinds outward rolling move

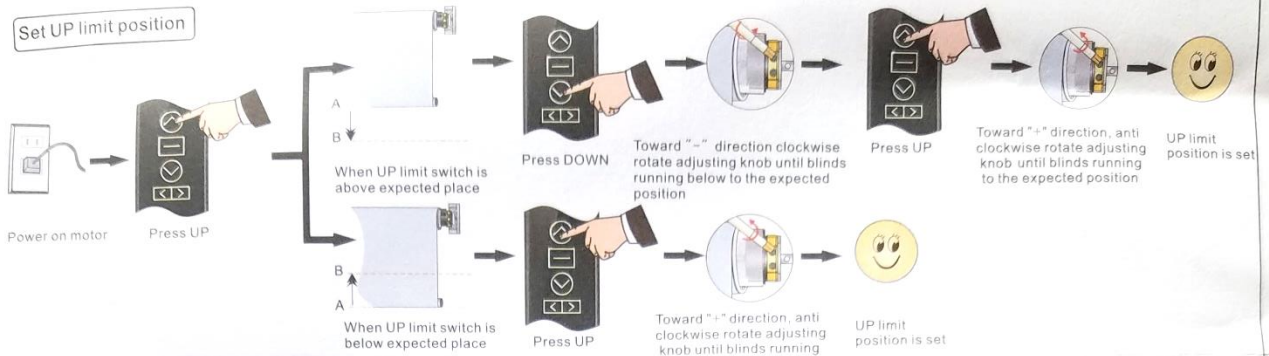


B. Adjust the UP adjusting knob to change UP limit position

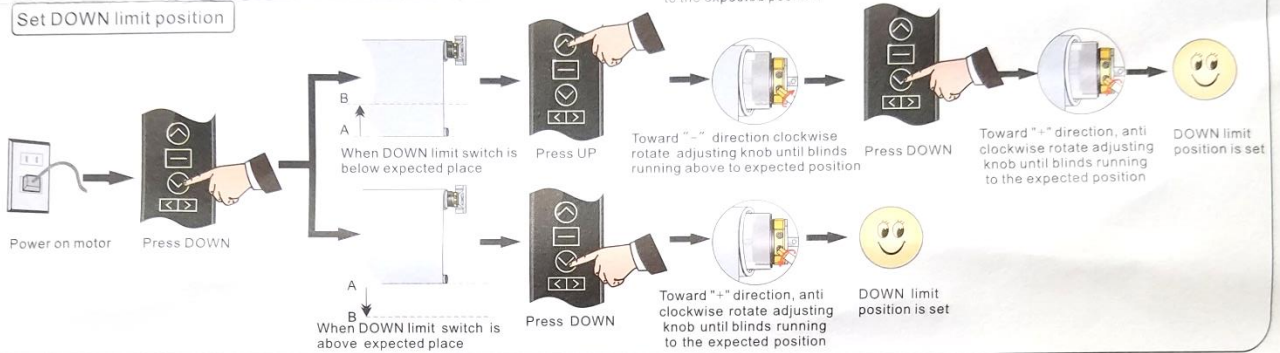


C. Adjust the DOWN adjusting knob to change DOWN limit position

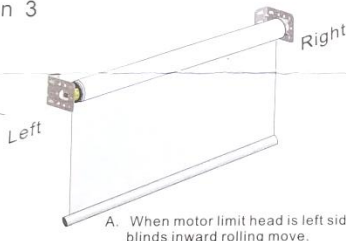
Set UP limit position



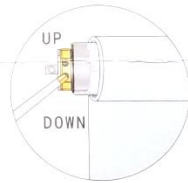
Set DOWN limit position



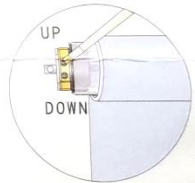
Installation 3



A. When motor limit head is left side, blinds inward rolling move.

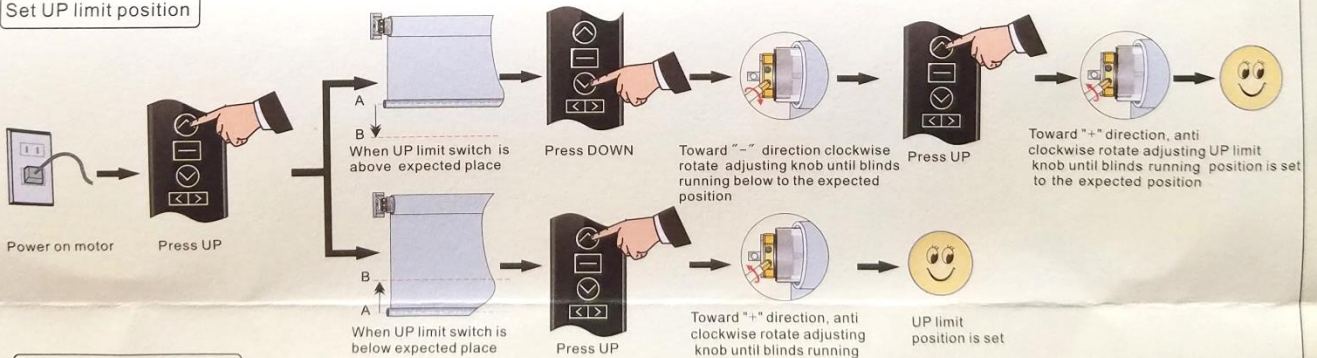


B. Adjust the UP adjusting knob to change DOWN limit position

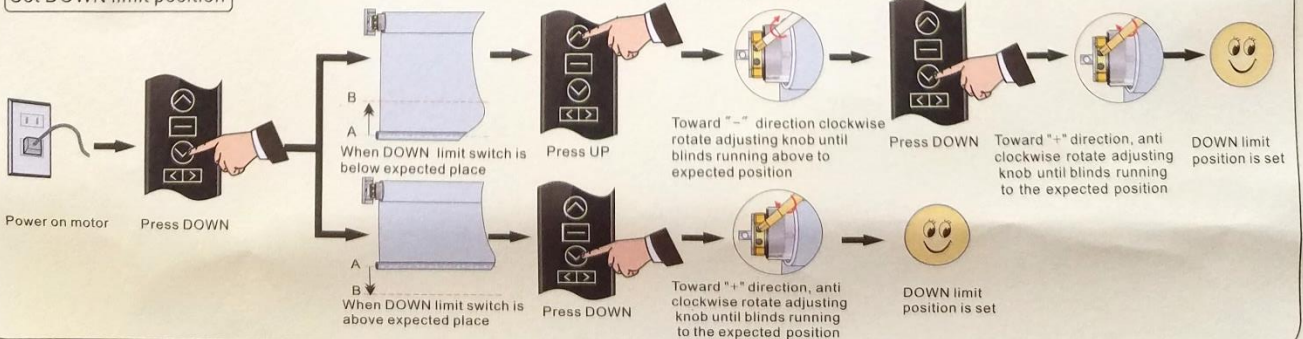


C. Adjust the DOWN adjusting knob to change UP limit position

Set UP limit position



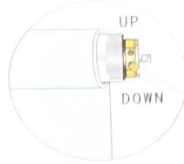
Set DOWN limit position



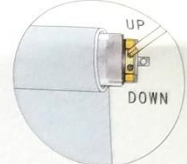
Installation 4



A. When motor limit head is right side, blinds inward rolling move.

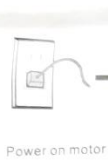


B. Adjust the UP adjusting knob to change DOWN limit position



C. Adjust the DOWN adjusting knob to change UP limit position

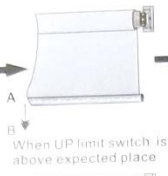
Set UP limit position



Power on motor



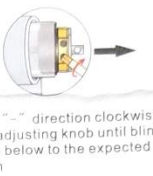
Press UP



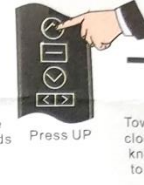
A. When UP limit switch is above expected place



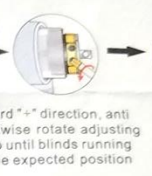
Press DOWN



Toward "-" direction clockwise rotate adjusting knob until blinds running below to the expected position



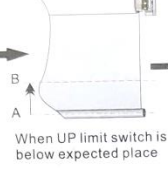
Press UP



Toward "+" direction, anti clockwise rotate adjusting knob until blinds running to the expected position



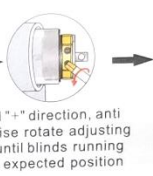
UP limit position is set



B. When UP limit switch is below expected place



Press UP

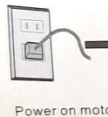


Toward "+" direction, anti clockwise rotate adjusting knob until blinds running to the expected position



UP limit position is set

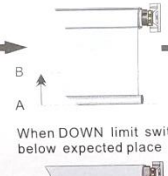
Set DOWN limit position



Power on motor



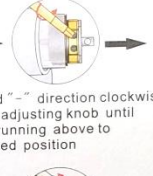
Press DOWN



A. When DOWN limit switch is below expected place



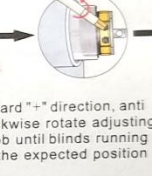
Press UP



Toward "-" direction clockwise rotate adjusting knob until blinds running above to expected position



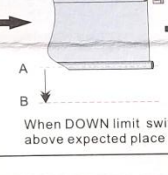
Press DOWN



Toward "+" direction, anti clockwise rotate adjusting knob until blinds running to the expected position



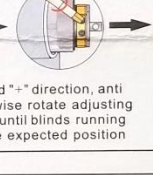
DOWN limit position is set



B. When DOWN limit switch is above expected place



Press DOWN



Toward "+" direction, anti clockwise rotate adjusting knob until blinds running to the expected position



DOWN limit position is set

Remark: 25° angle limit motor (Picture2)

Adjust journey position by adjusting knob as Picture 1.

Set UP limit position : Corresponding above four installation, the same as set DOWN limit position

Set DOWN limit position : Corresponding above four installation, the same as set UP limit position

Picture 1



Clockwise: Increase journey
Anticlockwise: Decrease journey

Picture 2



25° angle limit motor

F Troubleshooting

Items	Problem	Matter	Shooting
1	After connecting with the power, the motor can not work or work slowly.	a. The voltage is wrong b. Over loading c. Wrong installation cause accessories stuck	a. Change to rated voltage b. Adjust loading until safety loading c. Check accessories and ensure the correct installation
2	After connecting with power, only one direction can work, the other direction can not work	The limit position of fail working is not opened	Rotate crown 1 or 2 circles by hand on the opposite of motor current running direction
3	The motor stops running suddenly	a. The motor is in the mode of over-heat protection; precaution, over 130°C b. Power is off c. Motor arrived at the limited position	a. when temperature drops(after about 3 minutes), the motor will come back to work again b. Once connecting with the power well, the motor will come back to work c. To check whether need to change limit position by adjusting knob
4	Press controller / switch's DOWN button, blinds UP running	Wrong wiring	Exchange the connection of black and blue wires.