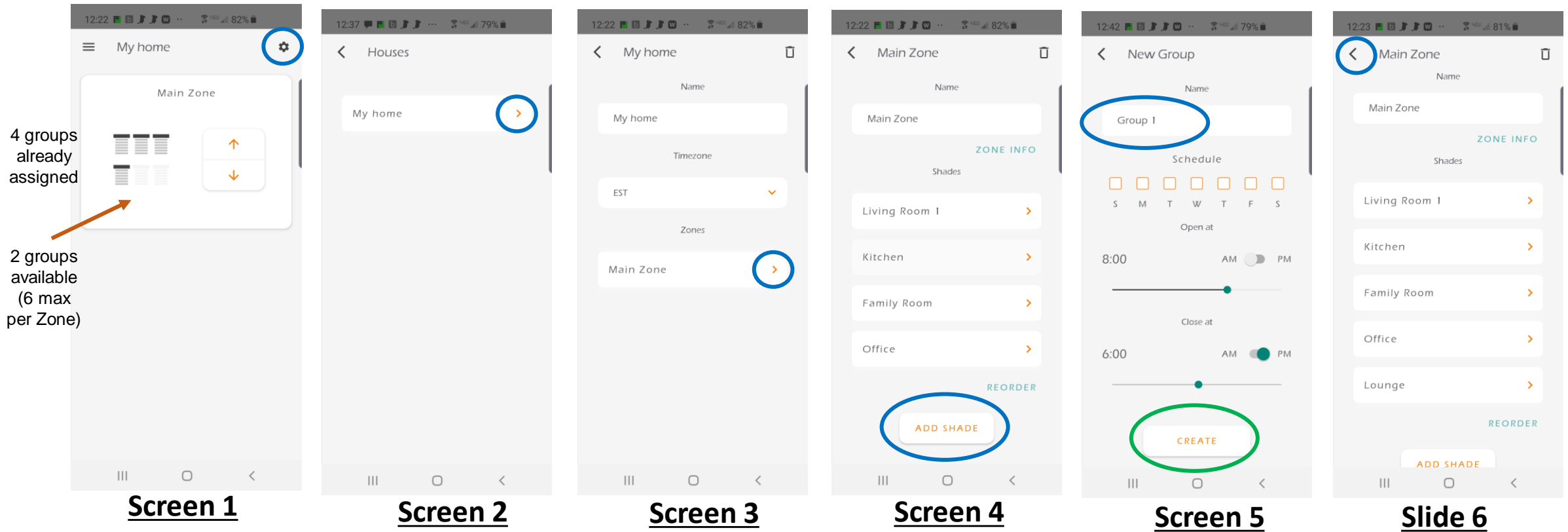


Adding new groups of shades to the Leviosa App



Screen 1: Select 'settings' wheel (circled in blue color) in the upper right hand corner

Screen 2: Select arrow (circled in blue color) to the right of the Location name "My Home"

Screen 3: Select arrow (circled in blue color) to the right of the Zone name "Main Zone"

Screen 4: Select button "ADD SHADE" (circled in blue color)

Screen 5: Change name "Group 1" (circled in blue color) to name that you want (in this example, "Lounge"). Select button "CREATE" (circled in green color)

Screen 6: New group "Lounge" is now listed. Select BACK arrow (circled in blue color) to the left of the Zone name "Main Zone" to back up to preceding menus, and eventually (3 back buttons) to the original screen

Pairing shades to a Leviosa App group (unlimited number of shades per group): 2 methods:

1. With the active remote control for a group/channel of shades, press/hold 'Stop' button 5 seconds until shade 'jogs' (travel briefly up and down). Release the button. Within 2 seconds, press once the 'Up' button within the desired Group in the Leviosa App
2. Press/hold the program button on the shade (use paperclip in hole above set screw on left side) for 5 seconds. After the shade 'jogs', within 2 seconds, press the 'Up' button within the desired Group in the Leviosa.
 - In either case, the shade(s) will 'jog' again, signifying this step was completed successfully.