

Installation of Leviosa Shades – Square brackets (5”)

See 3” and 4” Square brackets separately

Handling – Shades can be damaged without proper care:

- Do NOT use a knife to open packaging.
- Clean your hands before opening the shade.
- Keep sharp tools away from the shades.
- Keep the shade horizontal so the bottom hem bar does not slide out
- For shades wider than 5 feet, a helper is recommended for speedy, safe, and quality installation

Tools required:

- Drill or screwdriver
- Phillips screw bit
- 1/8” drill bit for pilot holes (for Leviosa provided screws). Check recommended pilot hole sizes for other screws.
- Steel measuring tape
- Pencil
- Level

5" SHADES

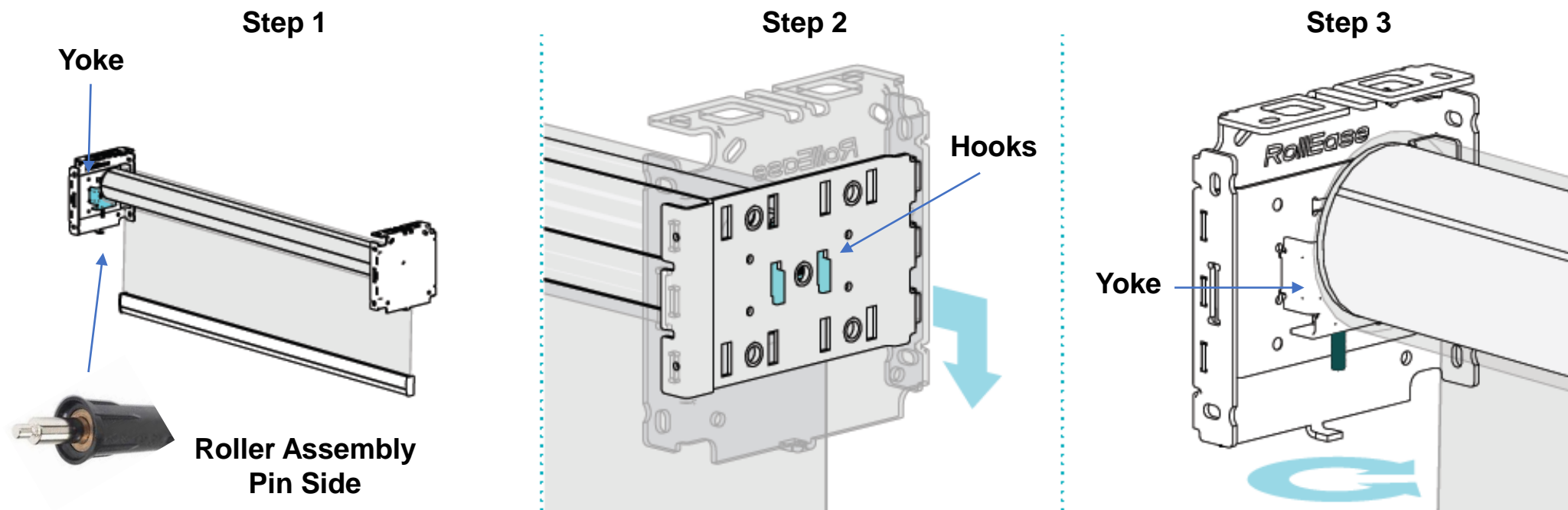
ALL brackets mount OPEN FLANGE SIDE down

Mount the brackets

- Use any two holes in the rear/top/side of each bracket.
- Attach each bracket to the mounting surface with at least two screws, embedded at least $\frac{3}{4}$ inch into solid surface (wood, metal concrete, NOT drywall alone).
- Important: Ensure that the brackets are level. If necessary, add shims to the brackets to make the shade level.

Mounting MOTORIZED shades

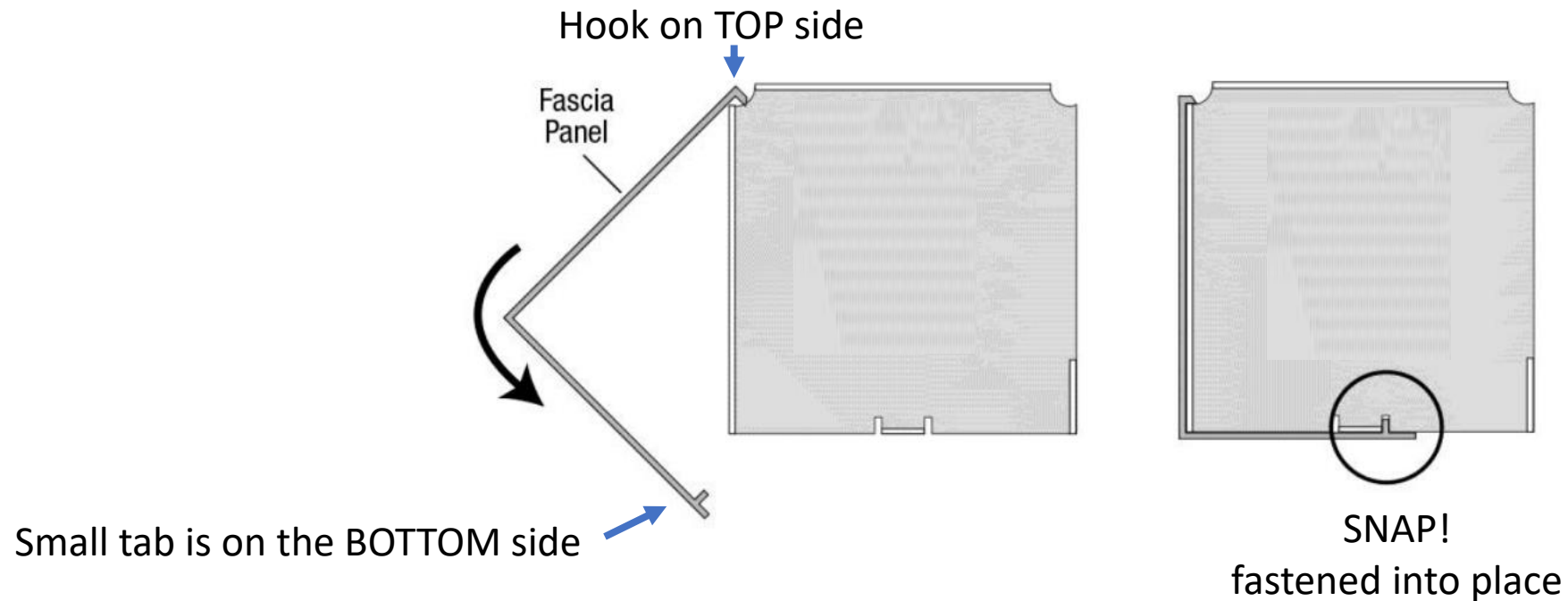
1. Place Roller Assembly Pin (non-motor side) on slot and pull down so it rests in yoke.
2. Attach Motor side: Push hooks through the bracket in the center holes, and pull down.
3. Adjust Yoke screw until Shade is level.



Installation of Valance/Fascia

FASCIA INSTALLATION: Assembling the two end brackets and the fascia panel.

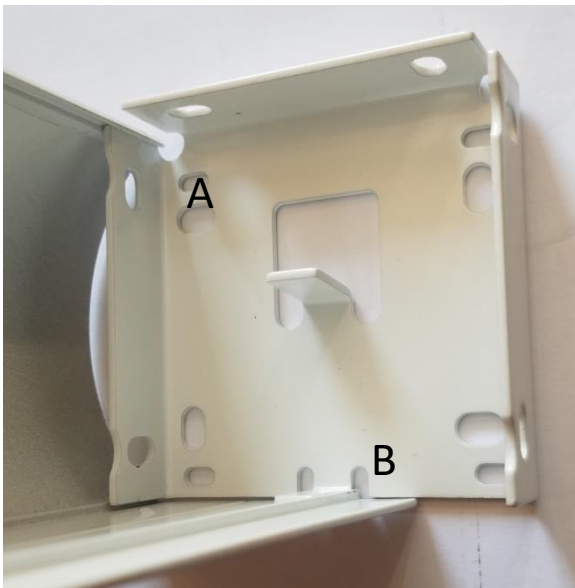
- For corded shades: the clutch-side bracket attaches to the side of the panel with the notch. The rotator side bracket goes on the side without the notch.
- For ALL shades: Place the top of the fascia panel into the top indentation of the brackets. Rotate the panel down and push to SNAP it into place.



Valance Installation

For Curved (shown here)
or Straight face Valances

Left bracket

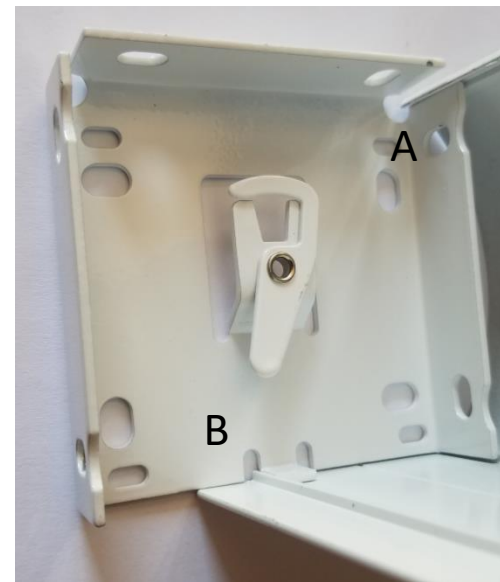


Standard Roll

Fabric rolls to back of bracket

1. Hang valance from Upper front tab (A).
2. Swing valance down so it 'clips' behind bottom tab (B).

Right bracket



Reverse Roll

Fabric rolls to front of bracket

1. Hold valance from Lower front tab (C).
2. Swing valance UP so it 'clips' into upper slot (D).

NOTE: ¼" space necessary at top to
insert valance and fasten.

