

# RUG STAR MAGAZINE

№ 03

INTIMACY  
PORTLAND

## PORTLAND POETRY

Welcome, everyone, to the third issue of RUG STAR Magazine featuring INTIMACY PORTLAND.

For our new issue we traveled overseas to Portland, Oregon, one of my favorite cities in the US and home of my soulful trader and dear friend Christiane Millinger.

Our target was more than ambitious. All the interior shoots for the new magazine had to be shot within a period of 8 days. We organized 6 beautiful Portland homes where would placed the rugs and shot them in interior with the incredibly talented local photographer Laurie Black.

Michael Christie, The Ruggist, Editor of Rug Insider flew in from the East Coast and we had a night to celebrate before the start of our adventure on the next morning. We loaded the rugs at Christiane's rug gallery on Lovejoy Street and made our way to the first location on our early morning cruise through the streets of Portland.

The second we saw Laurie and her husband Marc waiting at 8 AM at the set, we all knew it would be a magical week. She had been the missing part in the team that never ever worked in this combination before. These were enthusiastic days, the team around Christiane was adorable and even through the work was very exhausting, we were joyful at every moment.

The main focus for this issue is our latest NewWaterlily Collection, which I also call the Portland Poetry Collection. At first glance, they are a combination of mostly primary colors or clear black and white divisions in blurred block – a fresh, bold and clear message in Persian weave. The audience might see a play of geometric fields in these designs, but for me, it is a question of what is geometric and what is landscape, as we place these rugs in interior.

At the set we named ourselves Sparkle Pants and the Fringe Flippers, please hug a tree and keep Portland weird!

**Jürgen Dahlmans,**  
founder and creative head of **RUG STAR**

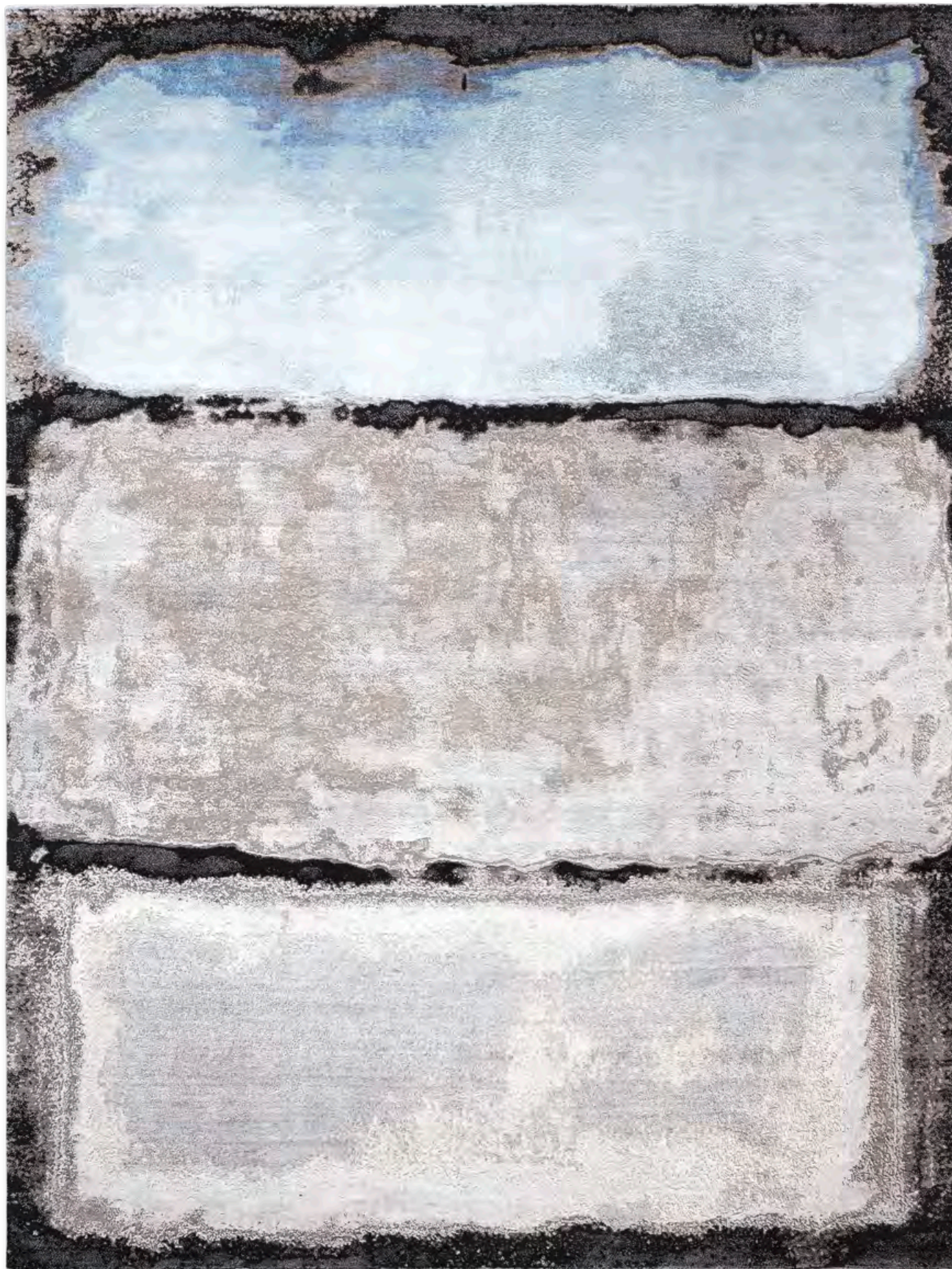


**NewClassic Reverse Kava Bagh**

Gold  
hand knotted Persian weave  
85 % finest silk



*Left to right: Michael Christie, Jürgen Dahlmans, Christiane Millinger*



### Waterlily No. 15

LightBlueGreySilver on Black | hand knotted Persian weave | 65 % finest silk



A dark wood cabinet with four drawers, positioned against the wall. It holds various decorative items, including a lifebuoy, a small mirror, and other objects.

A wooden chair with a spindle back, positioned in front of the cabinet.

A white tufted daybed with a wooden frame, positioned in front of the large window. It has a white cushion and a rolled-up rug.

A black metal coffee table with a bird sculpture on top. The table is positioned in front of the daybed.

A decorative wall sculpture consisting of a central point with radiating lines, resembling a starburst or a sunburst.

Three decorative wall sculptures, each resembling a stylized pine cone or a starburst.

A modern floor lamp with a curved arm and a spherical shade, positioned near the window.





**Folding Sky Supreme No. 03**

Multi CyanCopper  
hand knotted Persian weave  
100 % finest silk



**Waterlily No. 16**

WhiteSilverWhite on Black | hand knotted Persian weave | 65 % finest silk









**Spot No. 02**

CopperMauve | hand knotted Persian weave | 30 % finest silk



**Spot Supreme No. 02**

MultiColor | hand knotted Persian weave | 100 % finest silk



**Spot Supreme No. 02**

Blue&Grey | hand knotted Persian weave | 100 % finest silk

**Waterlily No. 15**

SilverAnthraciteWhite on Grey  
hand knotted Persian weave  
80 % finest silk

**Waterlily No. 13**

LightSandGrey 02  
hand knotted Persian weave  
70 % finest silk



**Waterlily No. 15**

SilverAnthraciteWhite on Grey  
hand knotted Persian weave  
80 % finest silk



**Mono Supreme No. 07**  
OldRose on LightGrey  
hand knotted Tibetan weave  
80 % finest silk

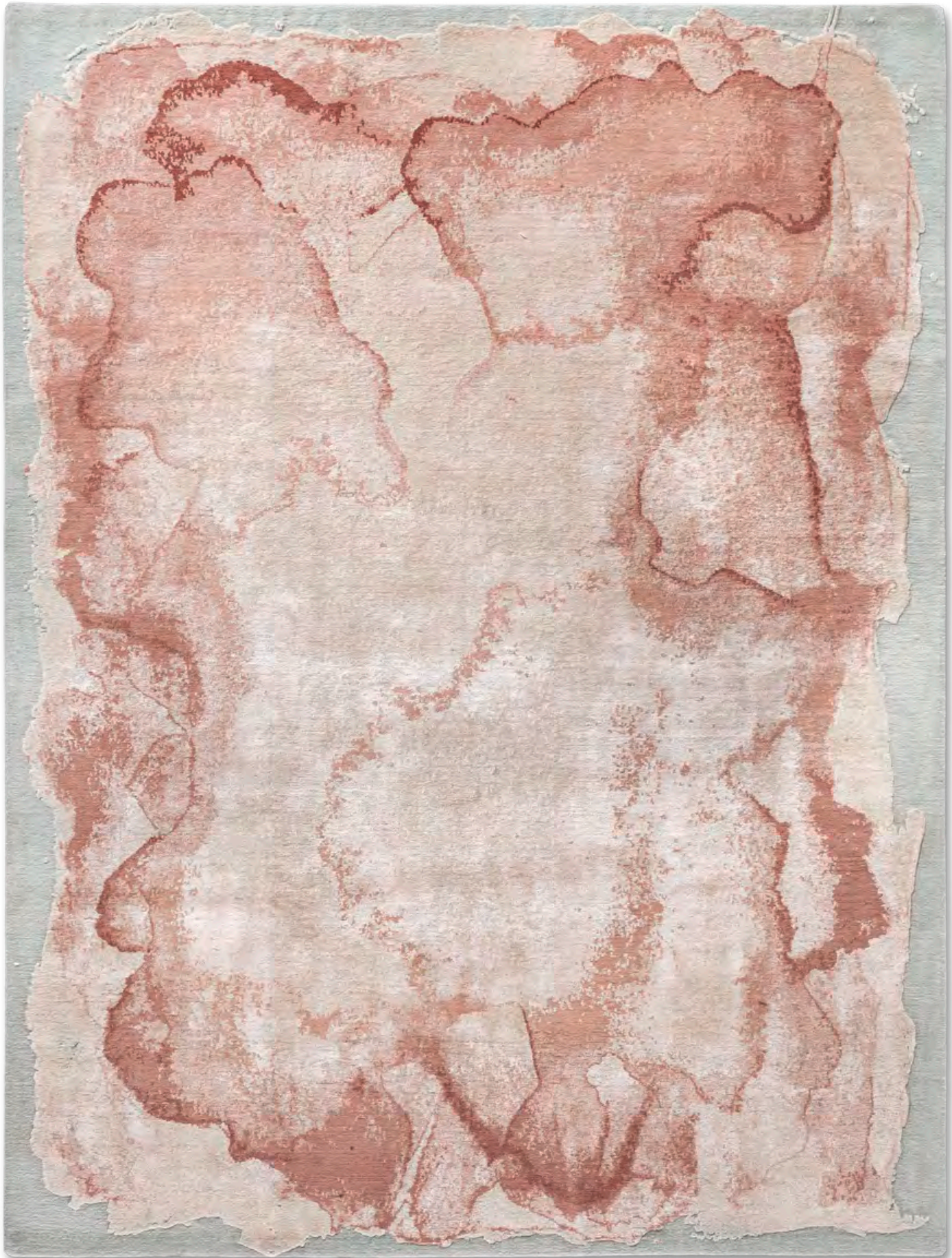






**Mono Supreme No. 07**

OldRose on LightSilver | hand knotted Tibetan weave | 100 % finest silk



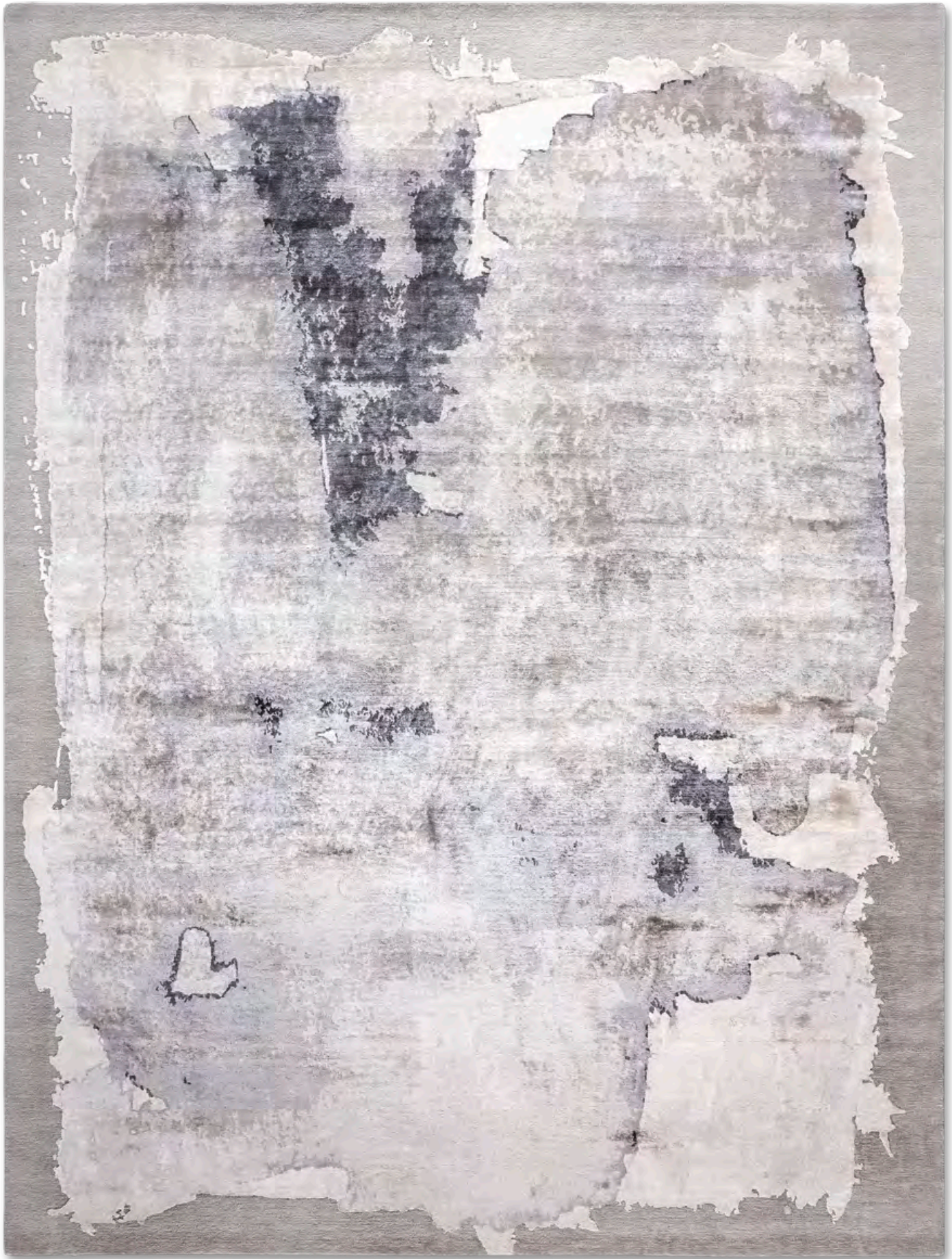
**Mono Supreme No. 13**

ForgottenRose on LightGrey | hand knotted Tibetan weave | 80 % finest silk



**Mono Supreme No. 15**

SlicedInside on LightGrey | hand knotted Tibetan weave | 80 % finest silk



**Mono Supreme No. 06**

Grey on LightGrey | hand knotted Tibetan weave | 80 % finest silk





**NewClassic Reverse Pine Garden**

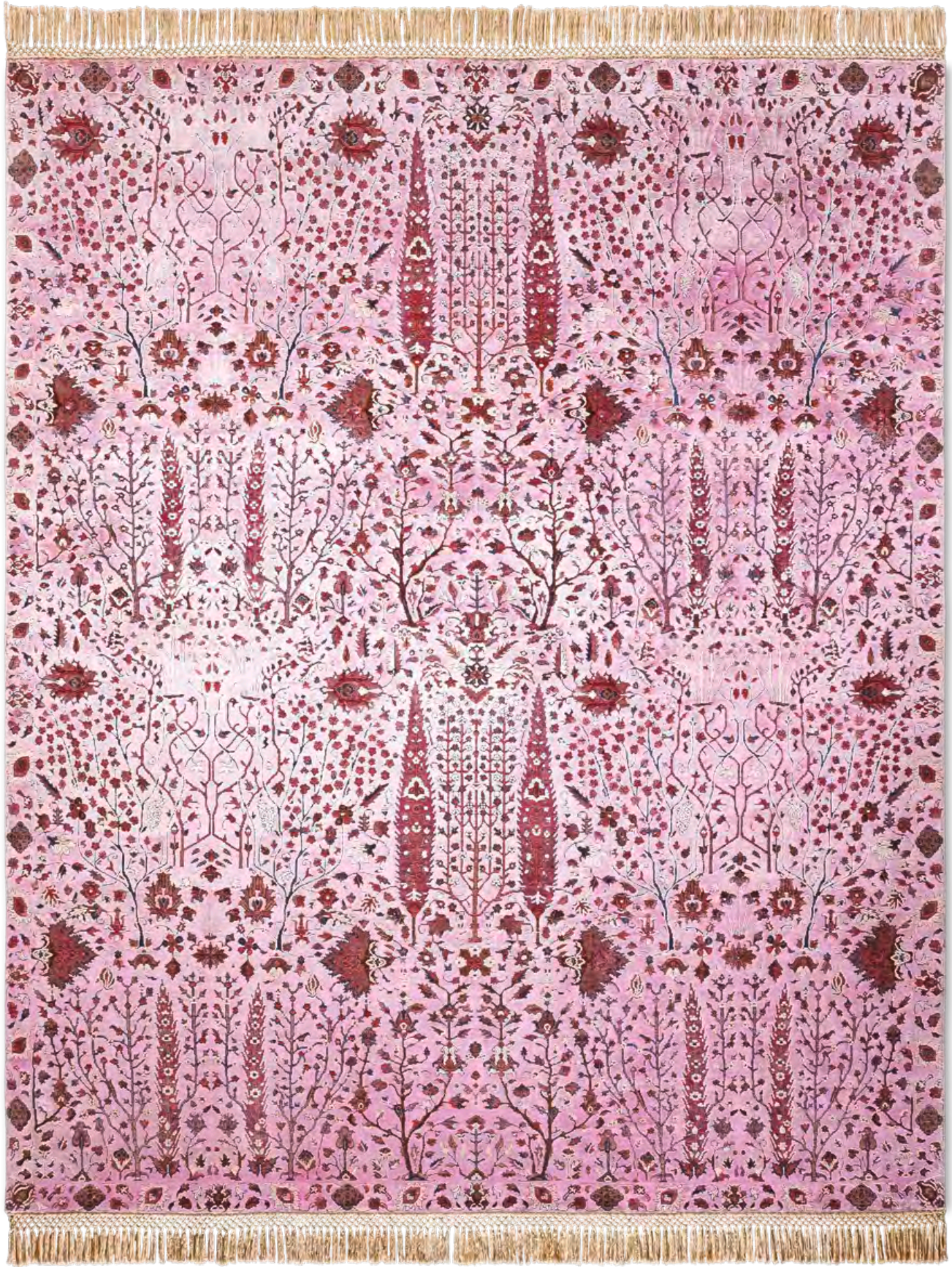
LightPink  
hand knotted Persian weave  
85 % finest silk



### NewClassic Reverse Pine Garden

Silver | hand knotted Persian weave | 85 % finest silk





**NewClassic Reverse Pine Garden**

LightPink | hand knotted Persian weave | 85 % finest silk



### **Hummingbirds No. 02**

Silver on Beige | hand knotted Persian weave | 30 % finest silk



an  
stG  
no  
ne





**Orchid No. 01**

Cream | hand knotted Persian weave | 30 % finest silk



### Orchid No. 01

Beige | hand knotted Persian weave | 30 % finest silk



**Orchid No. 03**

Beige ToneToTone | hand knotted Persian weave | 30 % finest silk



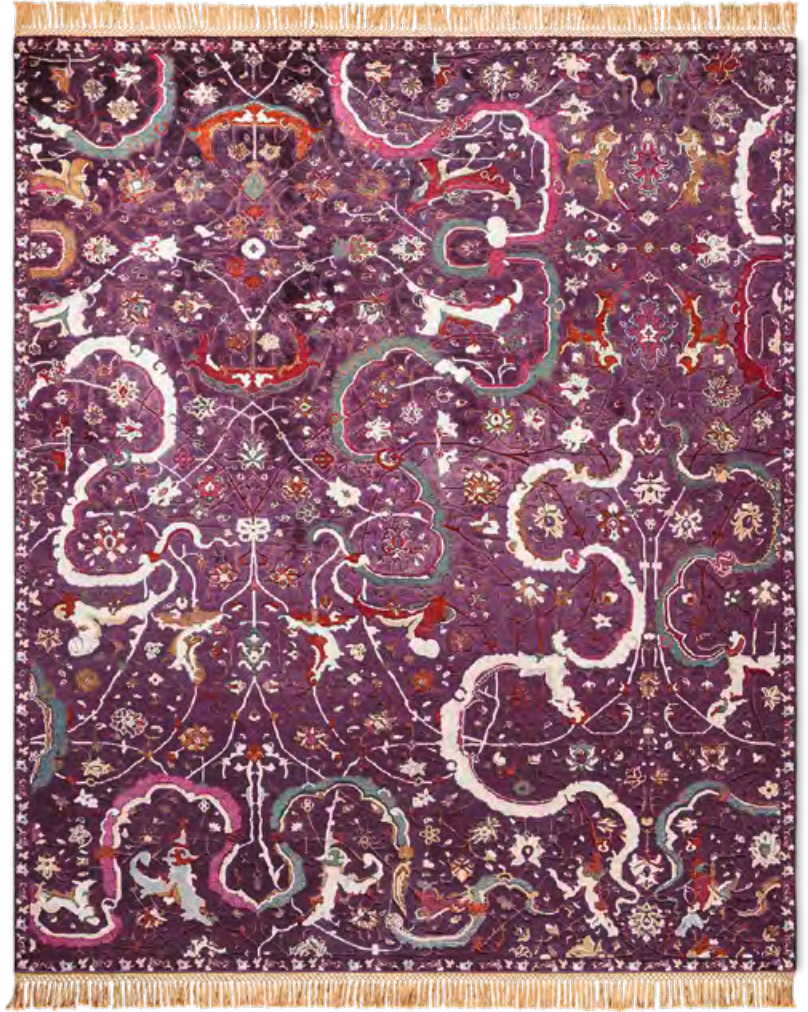
**NewClassic Reverse Tabriz**

Red  
hand knotted Persian weave  
85 % finest silk



**NewClassic Reverse Tabriz**

DeepPurple  
hand knotted Persian weave  
85 % finest silk



**NewClassic Reverse Tabriz**

MidNightBlue  
hand knotted Persian weave  
85 % finest silk





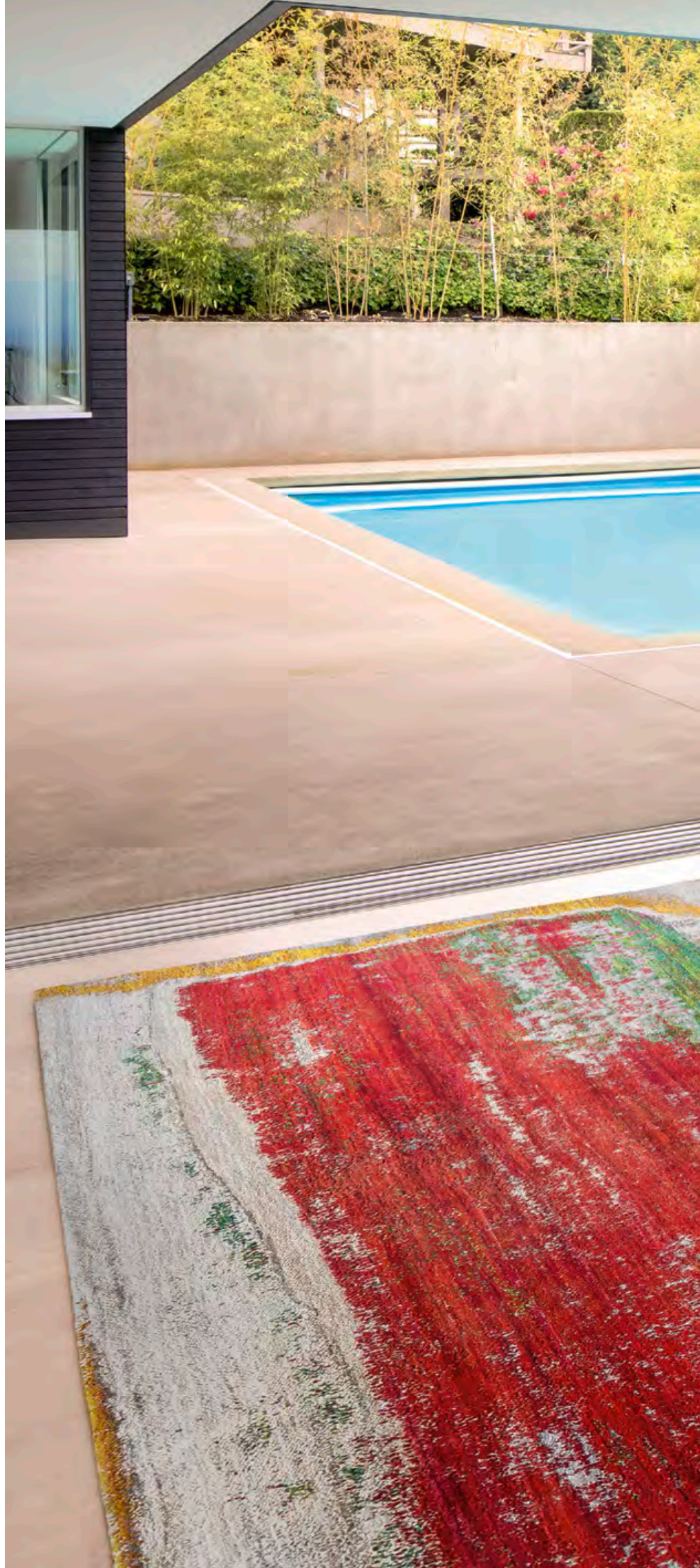
### Tibetan Pop Bondi

SoftPink | hand knotted Tibetan weave | 15 % finest silk

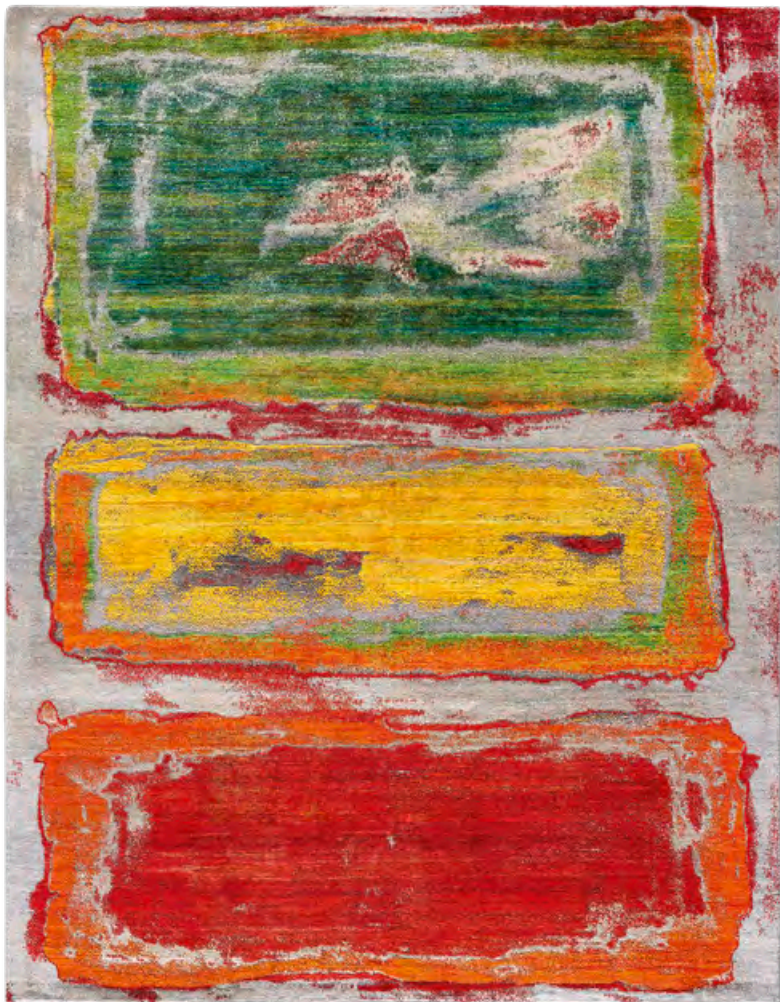


**Waterlily No. 04**

LittleMagentaSunshine  
hand knotted Persian weave  
70 % finest silk







### Waterlily No. 14

LoveShake 02  
hand knotted Persian weave  
70 % finest silk



### Waterlily No. 14

LoveJoy  
hand knotted Persian weave  
70 % finest silk









NewTribal No. 01

Original | hand knotted Turkish weave | 100 % wool





**Waterlily No. 10 with Grass**

LightBlueCopperYellow on Black | hand knotted Persian weave | 80 % finest silk

**IsfahanWoods ECO**

Random No. 1799  
hand knotted Tibetan weave  
60 % finest silk







### IsfahanWoods ECO

Random No. 1799 | hand knotted Tibetan weave | 60 % finest silk



**IsfahanWoods ECO**

Random No. 1796 | hand knotted Tibetan weave | 60 % finest silk



### NewTribal No. 02

Original | hand knotted Turkish weave | 100 % wool







### Feathers Lane

DeepPurple | hand knotted Persian weave | 65 % finest silk







**NewClassic Pine Garden**

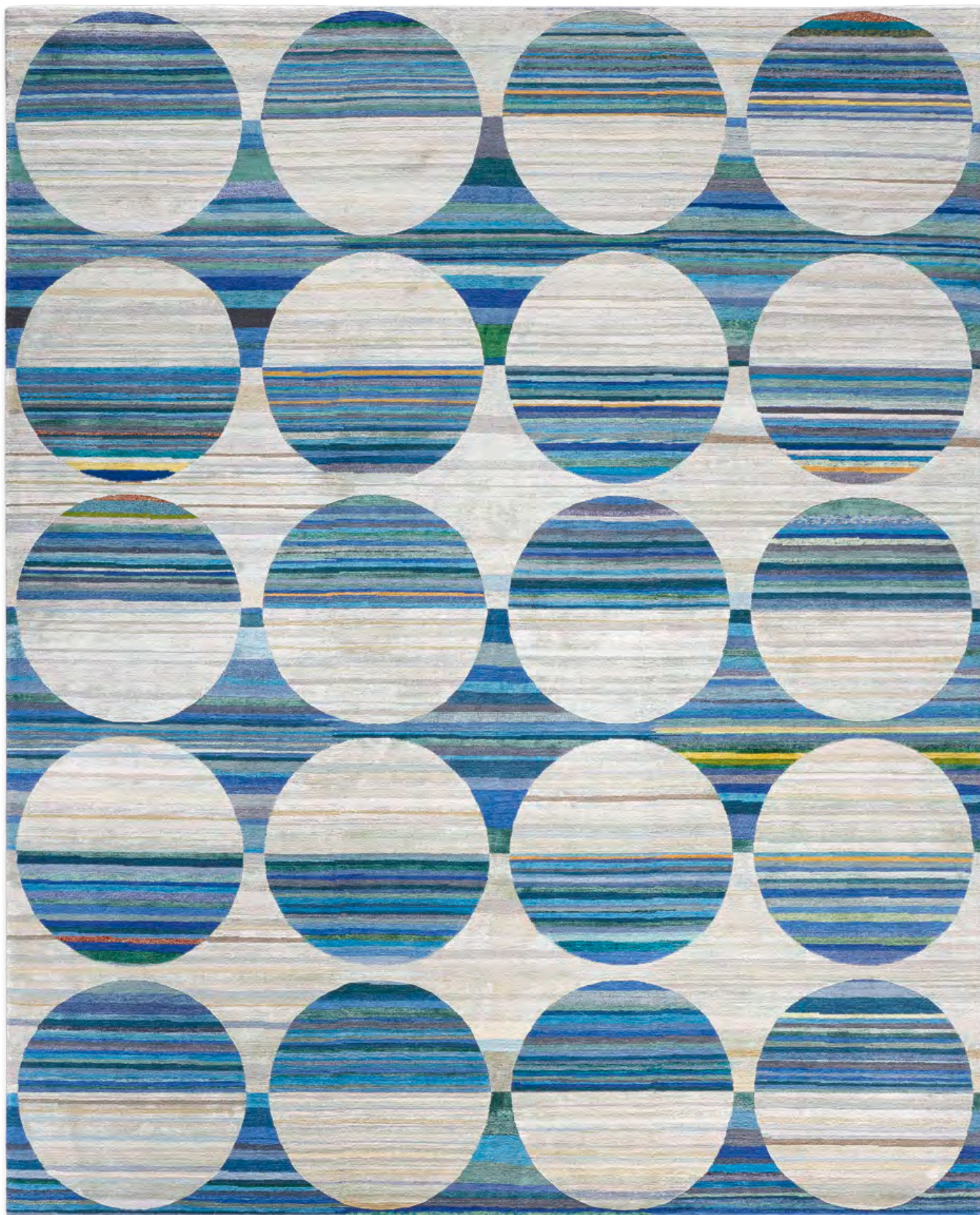
Charcoal | hand knotted Persian weave | 70 % finest silk



**Waterlily No. 16**

RedSunset | hand knotted Persian weave | 60 % finest silk





**Circle ECO No. 01**

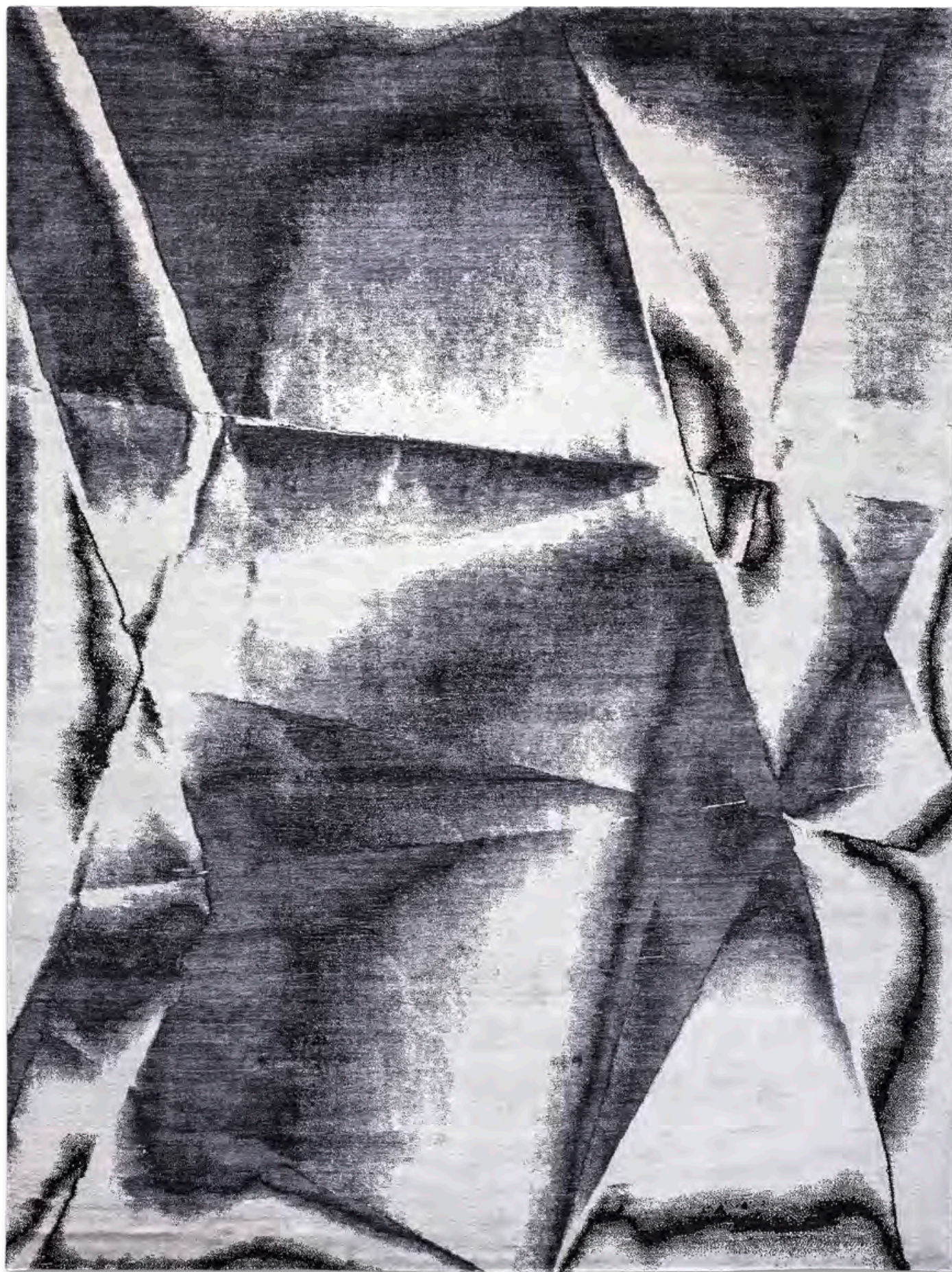
Random No. 1633 | hand knotted Tibetan weave | 50 % finest silk



**Circle ECO No. 01**

Random No. 1631  
hand knotted Persian weave  
50 % finest silk

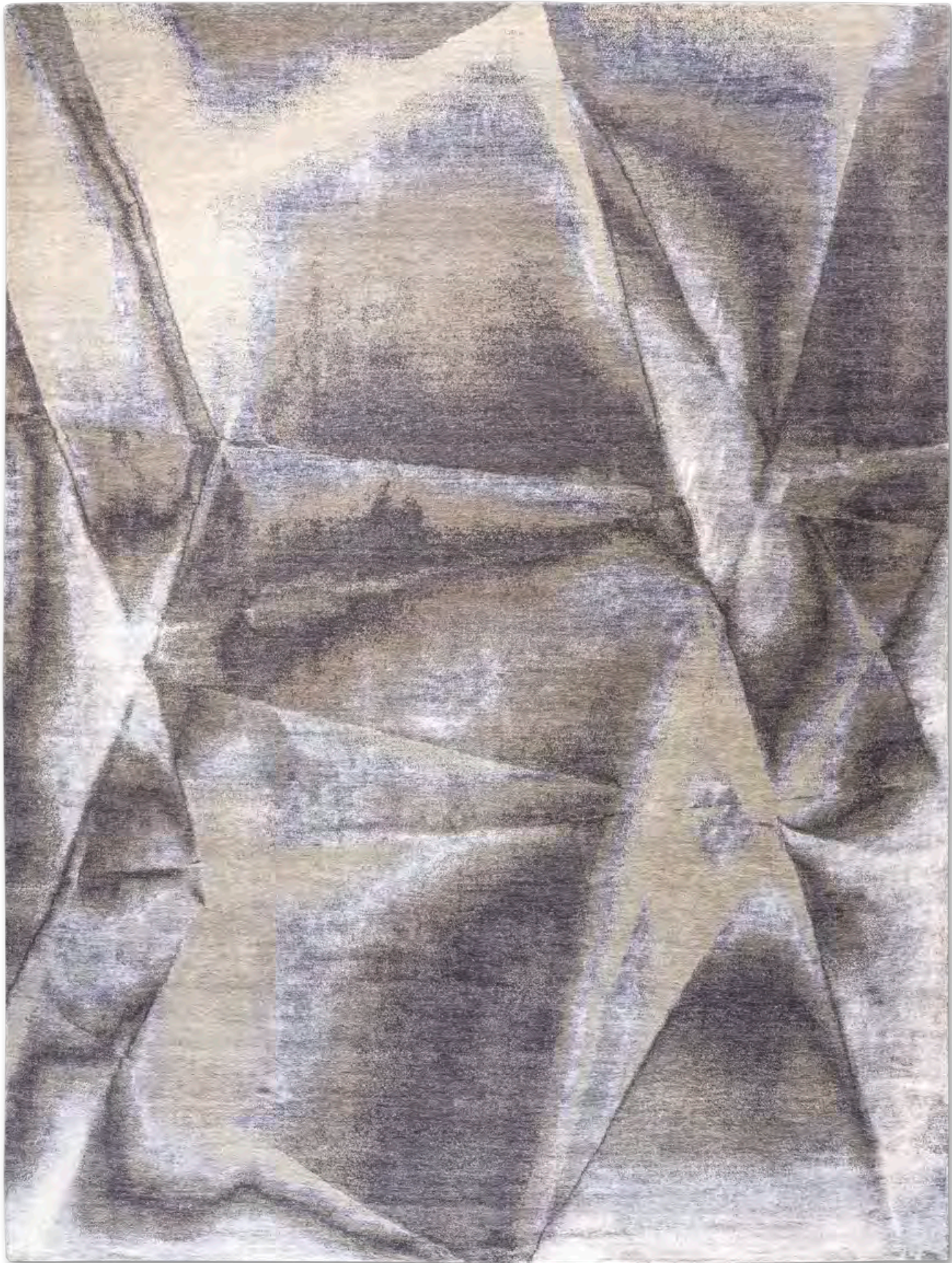




**Folding Sky Supreme No. 03**

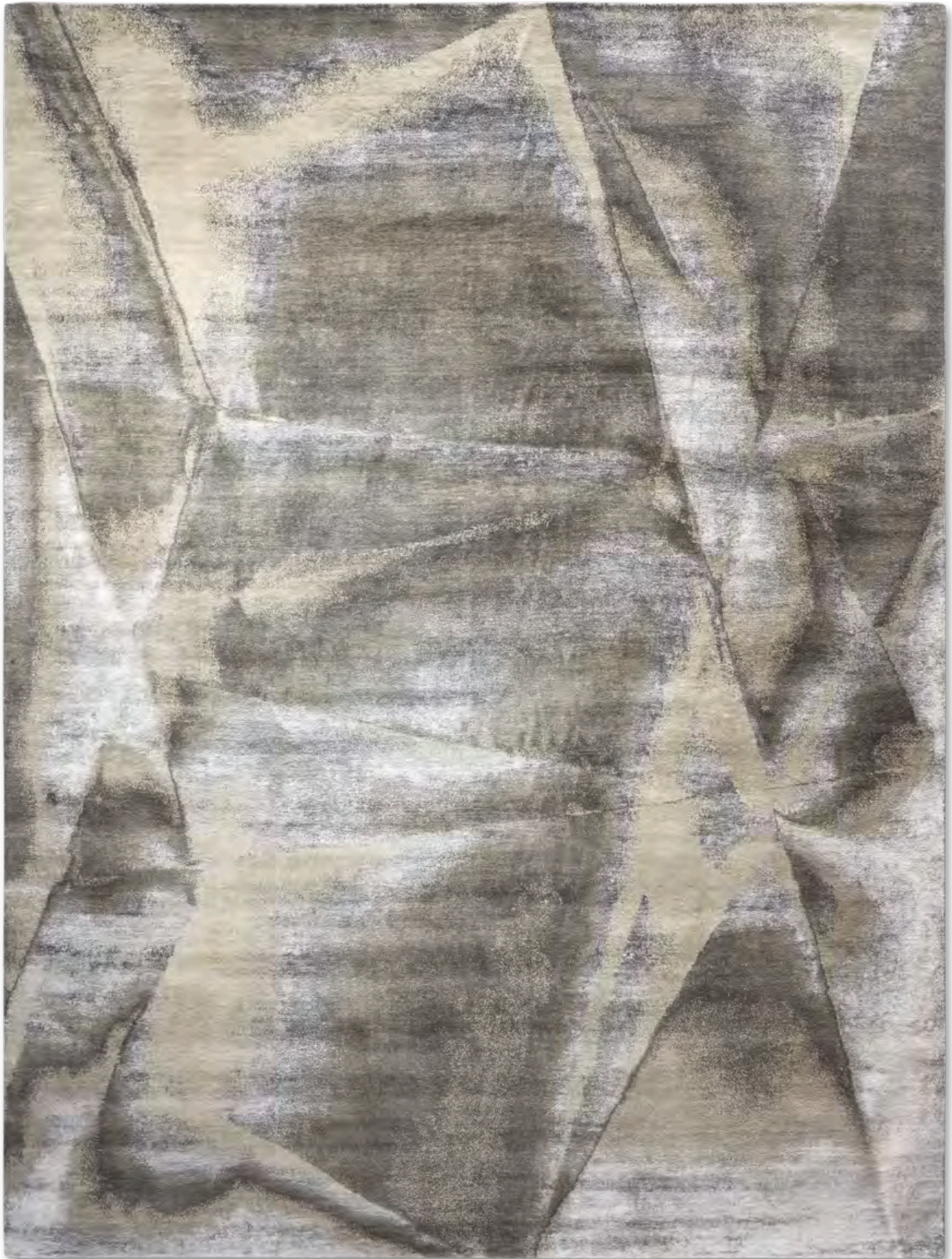
B&W | hand knotted Persian weave | 100 % finest silk





### **Folding Sky No. 03**

IcelandGrey | hand knotted Persian weave | 30 % finest silk



**Folding Sky No. 03**

IceLandOlive | hand knotted Persian weave | 30 % finest silk



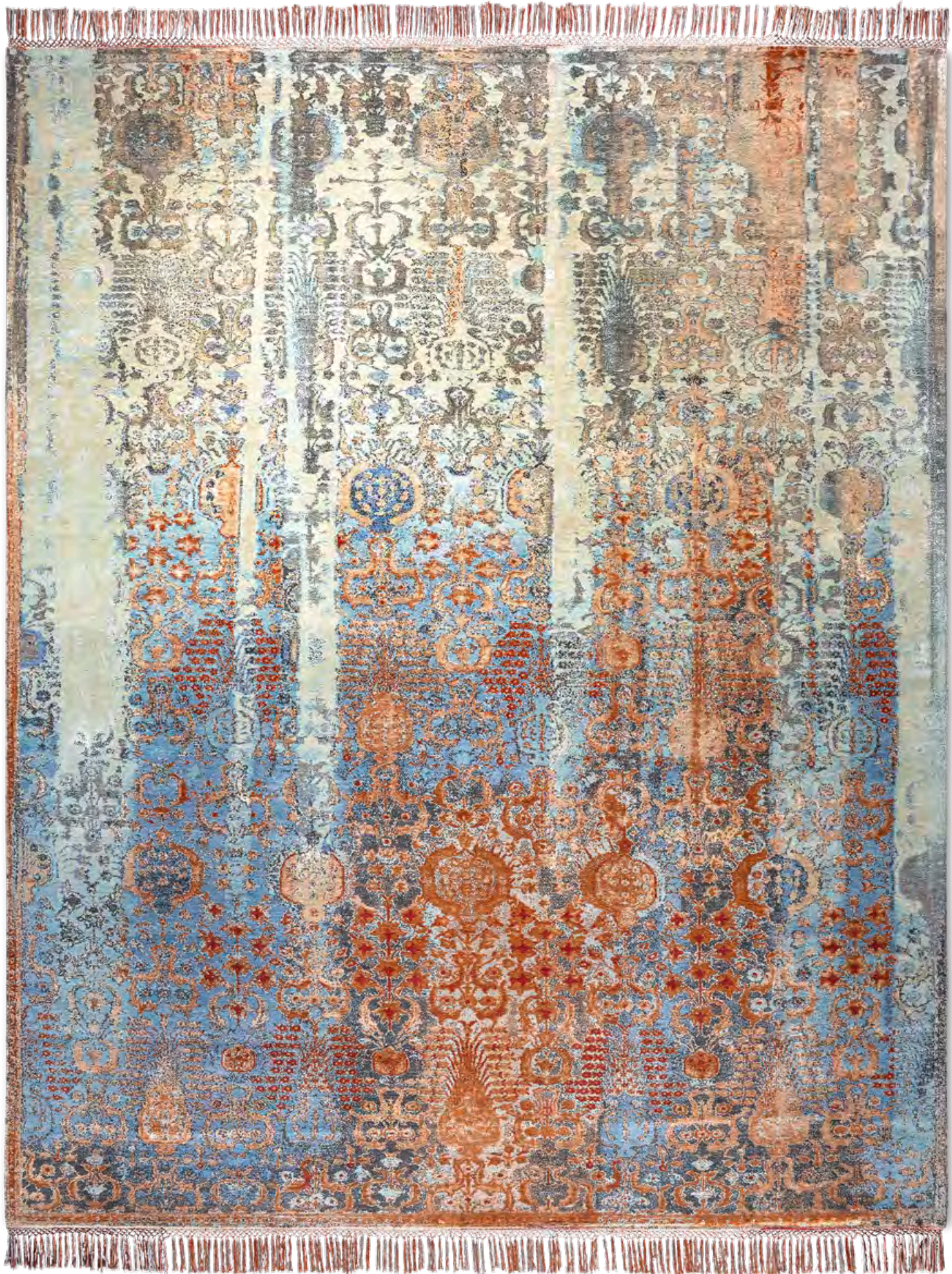
### NewTribal No. 04

Original | hand knotted Turkish weave | 100 % wool









**Isfahan Woods**

Aqua | hand knotted Persian weave | 30 % finest silk



### **Black Supreme No. 01**

B&W  
hand knotted Persian weave  
100 % finest silk



### **Black Supreme No. 02**

B&W  
hand knotted Persian weave  
100 % finest silk



**Black No. 01**

B&W  
hand knotted Persian weave  
30 % finest silk





**Aubusson No. 01**

Original | hand knotted Persian weave | 70 % finest silk

**Aubusson No. 02**

MidnightBlue  
hand knotted Persian weave  
60 % finest silk

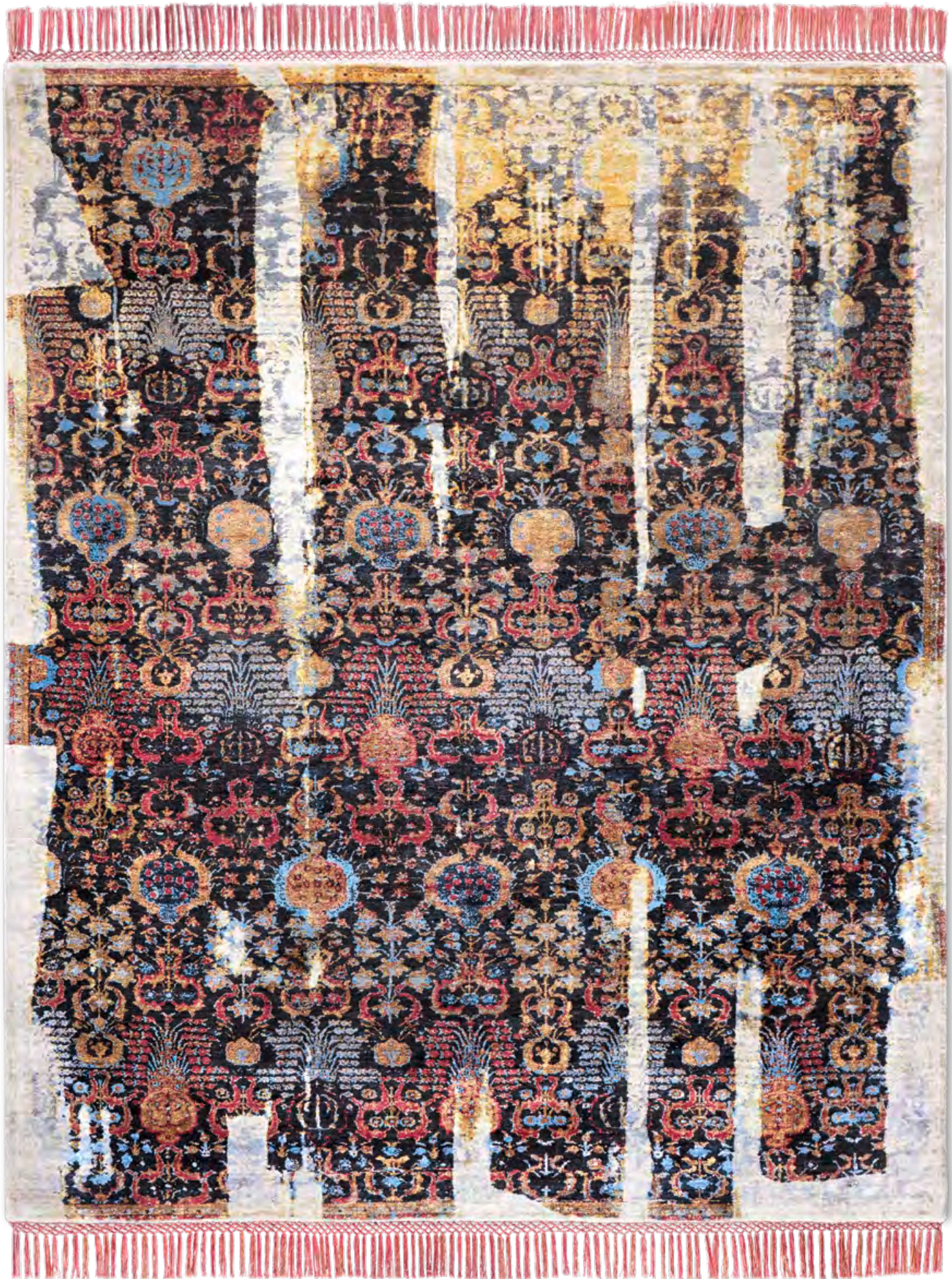
**Aubusson No. 03**

Original  
hand knotted Persian weave  
70 % finest silk









**Isfahan Block No. 04**

Ivory | hand knotted Persian weave | 30 % finest silk



### HardBoiled Splash No. 01

Original  
hand knotted Persian weave  
45 % finest silk



### HardBoiled Splash No. 02

Original  
hand knotted Persian weave  
45 % finest silk





### **Delft Supreme Snowbird**

Original | hand knotted Persian weave | 100 % finest silk





**Bento Box**

Gold | hand knotted Persian weave | 70 % finest silk









**DNA India Supreme Two Lions**

Beige  
hand knotted Persian weave  
100 % finest silk



### **DNA India Supreme Two Lions**

Beige | hand knotted Persian weave | 100 % finest silk



**DNA India Supreme Elephants**

Beige | hand knotted Persian weave | 100 % finest silk



### Ikat Dragon No. 04

CopperOrange  
hand knotted Persian weave  
70 % finest silk



### Ikat Dragon No. 01

ElectricBlue  
hand knotted Persian weave  
70 % finest silk





**WaterlilyCloud No. 15**

LightBlue | hand knotted Persian weave | sandblast | 45 % finest silk





**RUG STAR**  
by Jürgen Dahlmanns

Copyrights 2019 | Jürgen Dahlmanns | [www.rugstar.com](http://www.rugstar.com)





# **RUG STAR SHOWROOMS**

## ***RUG STAR BERLIN***

Rosa-Luxemburg-Str. 27  
10178 Berlin | Germany  
Fon: + 49 (0)30 30 87 54 47  
Mail: [info@rugstar.com](mailto:info@rugstar.com)  
[www.rugstar.com](http://www.rugstar.com)

## ***RUG STAR AUGSBURG***

Zeuggasse 5  
86150 Augsburg | Germany  
Fon: +49 (0)821 455 06 30  
Mail: [augsburg@rugstar.com](mailto:augsburg@rugstar.com)  
[www.rugstar-augsburg.de](http://www.rugstar-augsburg.de)

## ***RUG STAR STUTT GART***

Am Schillerplatz 4  
71522 Backnang | Germany  
Fon: +49 (0)7191 911 2226  
Mail: [kontakt@sorgcarpet.de](mailto:kontakt@sorgcarpet.de)  
[www.rugstar-stuttgart.de](http://www.rugstar-stuttgart.de)

## ***RUG STAR VIENNA***

Dorotheergasse 5  
1010 Wien | Austria  
Fon: +43 664 325 70 09  
Mail: [omar@adil-besim.at](mailto:omar@adil-besim.at)

## ***RUG STAR ITALIA***

Via Sant'Orsola 10  
24122 Bergamo | Italy  
Fon: +39 035222234  
Mail: [michele@rugstar.it](mailto:michele@rugstar.it)

## ***CHRISTIANE MILLINGER ORIENTAL RUGS AND TEXTILES***

2037 NW Lovejoy St  
Portland, OR 97209 | USA  
Fon: +1 971 444 2440  
Mail: [christiane@christianemillinger.com](mailto:christiane@christianemillinger.com)



Desire became addiction, right now I can say I am a 100% RUG ADDICT. [www.rugstar.com](http://www.rugstar.com)