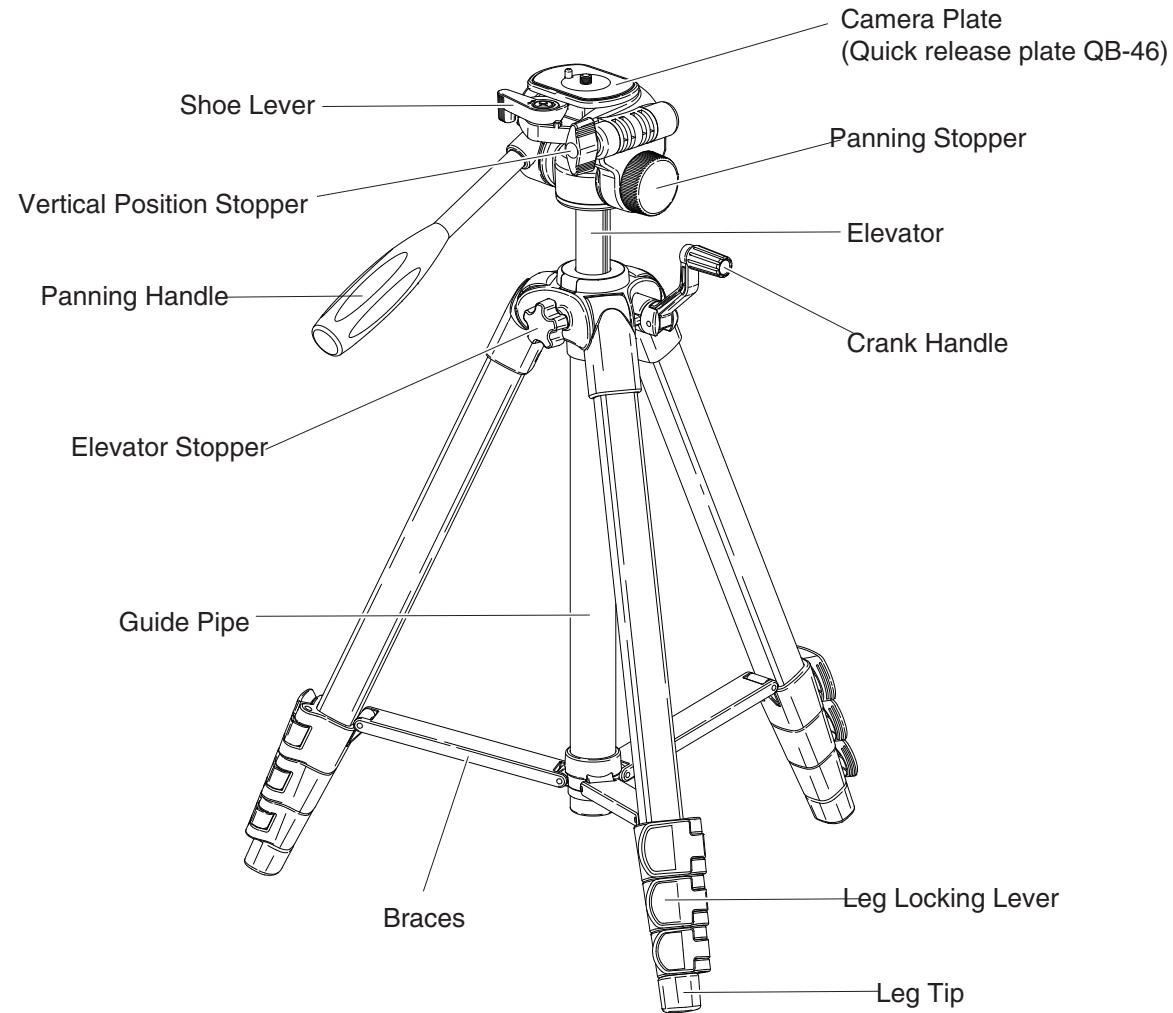


Individual Part name

Thank you very much for purchasing Velbon tripod. Please read this manual carefully before you start to use.



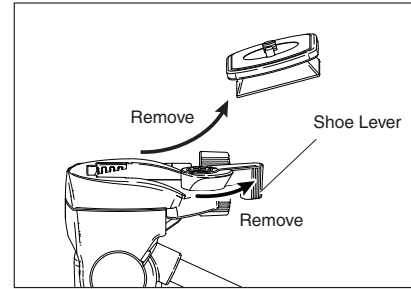
※Specifications are subject to change without notice

Specifications

Specifications	EX-630	EX-640	EX-530	EX-540	EX-888	EX-430	EX-440
MAX. Height incl. EV	1680mm	1700mm	1560mm	1560mm	1530mm	1510mm	1530mm
	66.1inch	66.9inch	61.4inch	61.4inch	60.2inch	59.4inch	60.2inch
Elevator extension	332mm	272mm	318mm	265mm	263mm	263mm	263mm
	13.07inch	10.71inch	12.57inch	10.43inch	10.35inch	10.35inch	10.535inch
Folded length	615mm	535mm	570mm	490mm	485mm	560mm	470mm
	24.2inch	21.1inch	22.4inch	19.3inch	19.1inch	22.0inch	18.5inch
Diameter of legs	26/23/20mm	26/23/20/17mm	23/20/17mm	23/20/17/14mm	23/20/17/14mm	20/17/14mm	20/17/14/11mm
	1.02/0.91/0.78inch	1.02/0.91/0.78/0.67inch	1.02/0.91/0.78inch	1.02/0.91/0.78/0.55inch	1.02/0.91/0.78/0.55inch	0.91/0.78/0.55inch	0.91/0.78/0.55/0.43inch
Section of legs	3	4	3	4	4	3	4
Weight	1690g	1670g	1450g	1430g	1290g	1200g	1180g
	3.7lbs	3.7lbs	8.82lbs	3.2lbs	2.8lbs	2.6lbs	2.6lbs
Best performance load	3000g	3000g	2000g	2000g	1500g	1000g	1000g
	6.61lbs	6.61lbs	4.4lbs	4.4lbs	3.3lbs	2.2lbs	2.2lbs

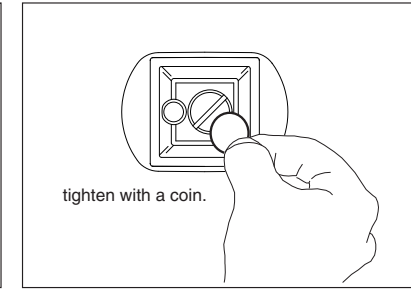
※There must be difference per unit depending on how they are assembled. Above are average numbers based on the drawings on each assembling parts.

1-1. How to attach camera



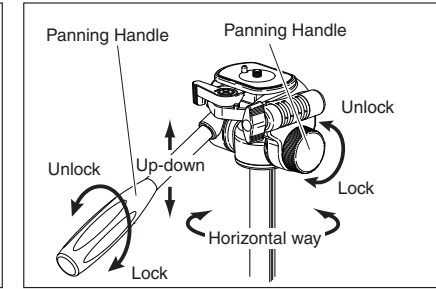
Raise up Shoe Lever until lock is released. Slide out the Quick-release to remove.

1-2. How to attach camera



Adjust the screw to the bottom of camera body. Then tighten with a coin firmly.

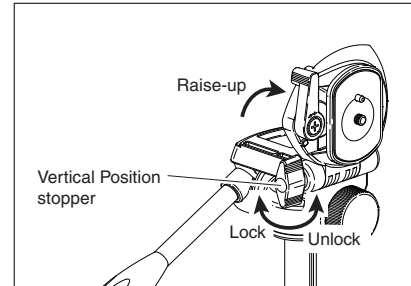
2-1. How to use the head



Unlock the Panning Handle by twisting to anti-clock wise direction, and can move up-and down. Unlock Panning stopper, and can move to horizontal way.

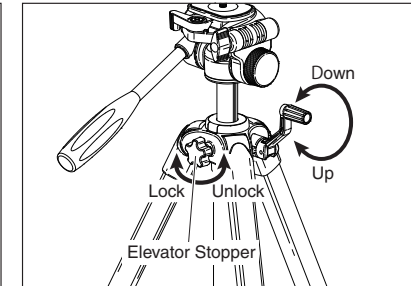
⚠ Please make sure to hold your camera to attach tripod and operate for the desired position.

2-2. How to use the head



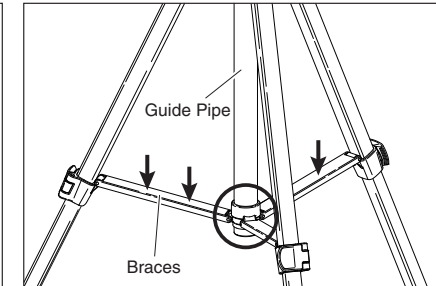
Unlock the Vertical Position Stopper, and turn camera plate to vertical position to 90° degrees for the portrait photo.

3. How to use elevator



Unlock Elevator Stopper, and rotate Crank Handle to up or down to the desired height. Then lock the Elevator Stopper. (Hold your camera while operate the Elevator up or down.)

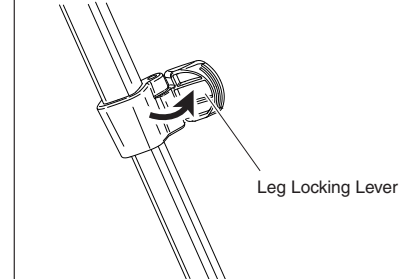
4. Caution for spread legs



When spread leg angle, pull down the Guide Pipe till the end to spread braces tightly and steady. Make sure all legs come till the end to stand the tripod even.

⚠ Unless legs are not fully opened, tripod might be laid down or unstable.

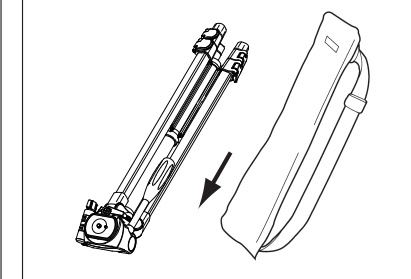
5. How to extend and lock legs



To adjust leg extension, raise up Leg Locking Lever and extend legs to the desired Position Then lock. Use upper part legs when it is not necessary to extend all legs till the maximum height.

⚠ Watch your fingers not to be bound between brace and leg.

6. Storage of the tripod



Put head down in the tripod case when storage.