



## **ENGINE GAGE UNITS**

An engine gage unit is an instrument indicating fuel pressure, engine lubricating oil pressure and engine lubricating oil temperature. It consists of a standard Army bakelite case which houses the three activating mechanisms, a dial face which contains three scales, and three pointers.

The engine gage unit is a combination of three gages, each a complete unit within itself. Two general types are available. In one type, the fuel pressure and oil pressure units are Bourdon tubes and the oil thermometer is of the capillary type, with an attached capillary tubing which comes in lengths usually 8, 15, and 22 feet. In the other type, which is more recent, the oil pressure unit is a Bourdon tube, but the fuel pressure unit is an opposed bellows, and the oil thermometer is an electrical ratio meter type used with a resistance thermometer bulb. Each of these mechanisms is described separately under the individual heading.



3 1/4"  
APPROX.



### GAGE UNIT—ENGINE, 8 - FOOT CAPILLARY ARMY TYPE B-2

NAMES: Engine gage unit, 8-foot capillary Unit—engine gage (Navy)  
Gage—engine unit, 8-foot capillary  
DESCRIPTION: The Army type B-2 engine gage unit is a combination fuel pressure, oil pressure and oil thermometer gage.

- CHARACTERISTICS:
- Lighting . . . . . individual 3-volt rim lamp
  - Dial markings . . . . . radioactive luminescent material
  - Oil temperature range . . . . . 0 to 100 degrees centigrade
  - Oil pressure range . . . . . 0 to 200 pounds per square inch
  - Oil over pressure . . . . . 400 pounds per square inch
  - Fuel pressure range . . . . . 0 to 10 pounds per square inch
  - Pressure connection . . . . . cone union (two)
  - Weight . . . . . approximately 2 1/4 pounds
  - Dial size . . . . . 2 3/4 inches
  - Depth . . . . . approximately 2 3/4 inches
  - Capillary length . . . . . 8 feet

#### ARMY

A. E. REFERENCE NUMBER: 61-3350

SPECIFICATIONS:

- Detail . . . . . 94-27824-A
- Superseded . . . . . 94-27824

TYPE DESIGNATION: B-2

A. S. C. STOCK NUMBER: Refer to chart.

TECHNICAL ORDER NUMBER: Refer to chart.

PRODUCTION STATUS: Not under procurement for initial installation. Superseded by type B-7, A. E. R. number 61-3650.

SHIPPING DATA:

- Gross weight . . . . . approximately 3 pounds
- Dimensions of carton . . . . . approximately 7 by 5 by 10 inches

#### NAVY

There is no Navy equivalent for this item.

**MODELS BELOW ARE INTERCHANGEABLE**  
Models are used in services as noted in column 3  
**A-Army, N-Navy, B-British, C-Commercial**

Manufacturer	Manufacturer's Part and Drawing Number	Used By	Air Service Command Stock Number	Army Technical Order Number	British Reference Number
Manning, Maxwell & Moore, Inc.	N-919-8	A-B	6100149500	05-75-1	106A/890
United States Gauge Co.	AW-2 3/4-15-8 AW-2 3/4-17-8	A-B C	6100149000	05-75-1	106A/890



**INTERCHANGEABILITY AS NOTED BY NUMBERS IN COLUMN 9**  
**Models are used in services as noted in column 3**  
**A-Army, N-Navy, B-British, C-Commercial**

Manufacturer	Manufacturer's Part and Drawing Number	Used By	AN Part Numbers	A. E. Reference Number	F. S. S. C. Number	A. S. C. Stock Number	British Reference Number	Inter-changeability	Remarks			
Moto Meter Gauge & Equipment Division	9543-A-8	A-B	AN5774-8	61-3650	88-G-1000	6100153869	106A/540	*				
	9754-A-8	A-B	AN5774-8	61-3650		6100153866	106A/540	*				
	9779-A-8	C						*				
	10057-A-8	A-B	AN5774-8	61-3650		6100153867	106A/540	*				
	10229-A-8	A-B	AN5774-8	61-3650		6100153869-2	106A/540	*				
	10281-A-8	N-B	AN5774-8				106A/540	*				
Manning, Maxwell & Moore, Inc.	6546-12A-8	B-C	AN5774-8	61-3650		6100143865	106A/540	*				
	6548-73A-8	A-B						*				
	6548-96A-8	B-C						*				
United States Gauge Co.	AW-2 3/4-19-L-8	C	AN5774-8	61-3650			106A/540	*				
	AW-2 3/4-19-T-8	B-C						*				
	AW-2 3/4-19-V-8	B-C						*				
	AW-2 3/4-19-AF-8	C						*				
	AW-2 3/4-19-AG-8	C						*				
	AW-2 3/4-19-AH-8	A						*				
AW-2 3/4-19-AD-8	A-B	AN5774-8	61-3650		106A/540	*	7/16-20 thread connections. Fuel pressure 0-20 PSI.					
Moto Meter Gauge & Equipment Division	9543-A-15	A-B	AN5774-15	61-3950	88-G-1007	6100153873	106A/720	**				
	9754-A-15	A-B	AN5774-15	61-3950				106A/720		**		
	9779-A-15	C								**		
	10057-A-15	A-B	AN5774-15	61-3950				6100153874		106A/720	**	
	10229-A-15	A-B	AN5774-15	61-3950				6100153874-4		106A/720	**	
	10281-A-15	N-B	AN5774-15							106A/720	**	
Manning, Maxwell & Moore, Inc.	6546-12A-15	B-C	AN5774-15	61-3950		6100153872	106A/720	**				
	6548-73-15	A-B	AN5774-15					106A/720		**		
	6548-73A-15	A-B	AN5774-15					61-3950		6100153872-3	106A/720	**
	6548-96A-15	B-C	AN5774-15								106A/720	**
United States Gauge Co.	AW-2 3/4-19-L-15	C	AN5774-15	61-3950		6100153871-6	106A/720	**				
	AW-2 3/4-19-T-15	A-B-C						**				
	AW-2 3/4-19-V-15	B-C						**				
	AW-2 3/4-19-AF-15	C						**				
	AW-2 3/4-19-AG-15	C						**				
	AW-2 3/4-19-AH-15	A-B						AN5774-15		61-3950	6100153871-4	106A/720
AW-2 3/4-19-AD-15	A-B	AN5774-15	61-3950		106A/720	**	7/16-20 thread connections. Fuel pressure 0-20 PSI.					
Moto Meter Gauge & Equipment Division	9543-A-22	A-B	AN5774-22	61-4100		6100153876	106A/1332	***				
	9754-A-22	A-B	AN5774-22	61-4100				106A/1332		***		
	9779-A-22	C								***		
	10057-A-22	A-B	AN5774-22	61-4100				6100153876-5		106A/1332	***	
	10229-A-22	A-B	AN5774-22	61-4100				6100153876-6		106A/1332	***	
	10281-A-22	B-C								106A/1332	***	
Manning, Maxwell & Moore, Inc.	6546-12A-22	B-C	AN5774-22	61-4100		6100153875	106A/1332	***				
	6548-73-22	A-B						106A/1332		***		
	6548-73A-22	A-B						AN5774-22		61-4100	106A/1332	***
	6548-96A-22	B-C										106A/1332
United States Gauge Co.	AW-2 3/4-19-L-22	C	AN5774-22	61-4100		6100153874-35	106A/1332	***				
	AW-2 3/4-19-T-22	A-B-C						***				
	AW-2 3/4-19-V-22	B-C						***				
	AW-2 3/4-19-AF-22	C						***				
	AW-2 3/4-19-AG-22	C						***				
	AW-2 3/4-19-AH-22	A-B						AN5774-22		61-4100		106A/1332
AW-2 3/4-19-AD-22	A-B	AN5774-22	61-4100	6100153874-3	106A/1332	***	7/16-20 thread connections. Fuel pressure 0-20 PSI.					

\*8 foot lengths. All interchangeable within their own group, but not interchangeable with those marked \*\* or \*\*\*, because of length.

\*\*15 foot lengths. All interchangeable within their own group, and with those marked \*, but not with those marked \*\*\*, because of length.

\*\*\*22 foot lengths. Interchangeable with all within their own group, and, where none of the other groups are available, may be used in place of those marked \* or \*\*.

**GAGE UNIT—CAPILLARY THERMOMETER ENGINE**

*(Continued from Page 7)*

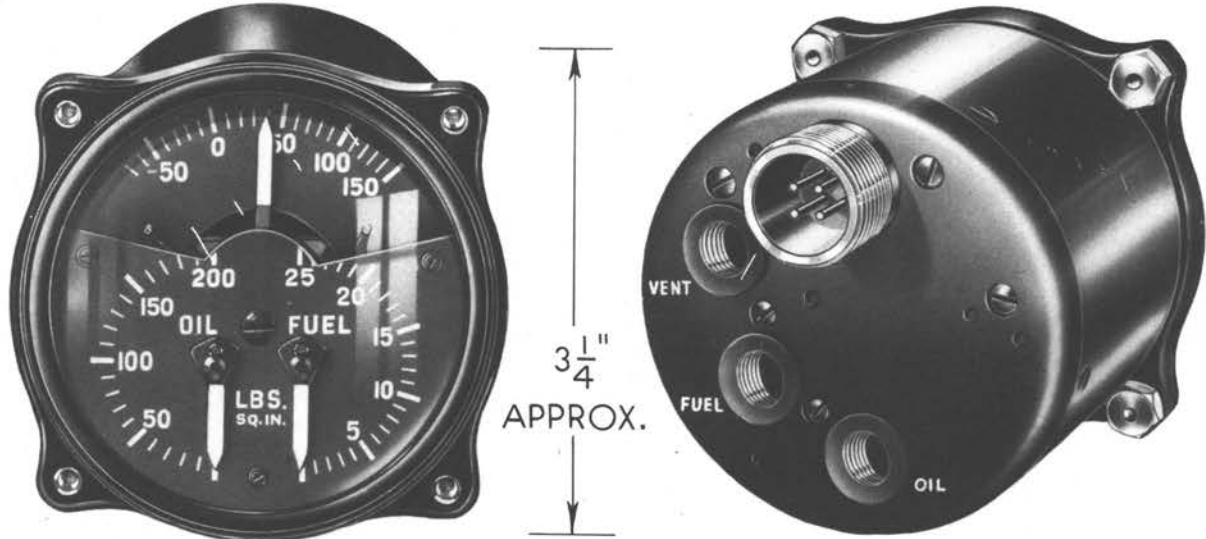
(RESTRICTED)



**ENGINE GAGE UNITS  
INSTRUMENTS—ENGINE**

(RESTRICTED)

# ENGINE GAGE UNITS INSTRUMENTS—ENGINE



## GAGE UNIT—ENGINE (ELECTRICAL THERMOMETER)

AN5773-1 FORMER ARMY TYPE B-8 F. S. S. C. NUMBER 88-G-1020

NAMES: Engine (electrical thermometer) gage unit  
Engine gage unit

Gage—engine unit  
Unit—engine gage (Navy)

DESCRIPTION: This type AN5773-1 engine gage unit is a combination fuel pressure, lubricating oil pressure and lubricating oil temperature gage.

### CHARACTERISTICS:

Markings	fluorescent
Temperature range	-70° to +150° centigrade
Oil pressure range	0 to 200 pounds per square inch
Oil over pressure	600 pounds per square inch
Fuel pressure range	0 to 25 pounds per square inch
Pressure connections	three 1/8 inch internal pipe thread
Weight	approximately 1 1/8 pounds
Dial size	2 3/4 inches diameter
Depth	approximately 3 1/2 inches
Thermometer (electrical plug)	AN3106-16S-1S
Thermometer (bulb)	AN5525
Voltage	12 or 24 volt D.C.

### RELATIONSHIP OF PARTS: Used with:

Resistance thermometer bulb AN5525-2, A. E. Reference Number 61-8901

### ARMY

A. E. REFERENCE NUMBER: 61-4200

#### SPECIFICATIONS:

Detail AN-G-18  
Superseded 94-27423

AN DRAWING NUMBER: AN5773

TYPE DESIGNATION: AN5773-1 (former Army type B-8)

PRODUCTION STATUS: Under procurement.

SHIPPING DATA: Shipped as a complete unit.

### NAVY

TYPE DESIGNATION: AN5773-1

#### SPECIFICATIONS:

Detail AN-G-18  
Superseded BuAer Spec. SQ-103

AN DRAWING NUMBER: AN5773

F. S. S. C. STOCK NUMBER: 88-G-1020

PROCUREMENT STATUS: Standard. G. E. F.  
—Order through A. S. O. by F. S. S. C. number.

### MODELS BELOW ARE INTERCHANGEABLE Models are used in services as noted in column 3 A-Army, N-Navy, B-British, C-Commercial

Manufacturer	Manufacturer's Drawing Number	Used By
Moto Meter Gauge & Equipment Division	10322-A	A-N
Thomas A. Edison, Inc.	33351	A-N
United States Gauge Co.	AW-23/4-28-F AW-23/4-28-E	A-N C



## **FUEL MIXTURE INDICATORS**

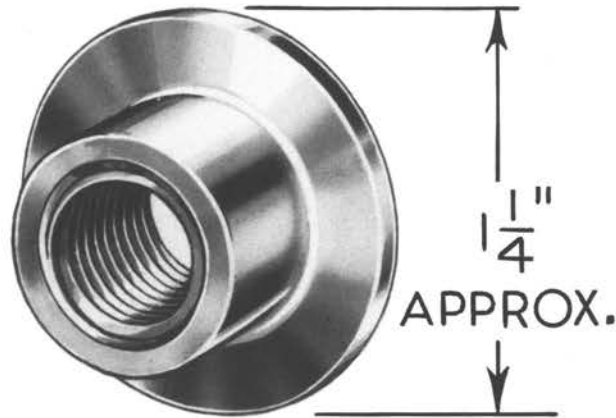
The fuel mixture indicator is an instrument which continuously shows, through analysis of the exhaust gases of the engine, the proportion of gasoline and air in the fuel mixture entering the airplane engine. Through its use the pilot is enabled to set his carburetor mixture controls so that the mixture is not lean enough to injure the engine and not rich enough to cause high fuel consumption.

The assembly consists of an indicator mounted on the instrument panel and an analysis cell mounted in the engine nacelle; there are also sampling tubes mounted in the exhaust pipe and connected by tubing to the analysis cell, to convey the exhaust gas sample. The sampling tubes are threaded into small flanges welded into the engine exhaust stack; one faces upstream and collects samples of gas continuously, the other faces downstream and returns the analyzed gas to the exhaust pipe.

The analysis cell has four sensitive elements, of equal electrical resistance, arranged as a simple Wheatstone bridge. One pair of the elements is exposed to the exhaust gas as it comes from the sampling tube, and the other pair of elements is exposed to air. The thermal conductivity of the exhaust gas varies as the fuel/air ratio varies, and such difference in the thermal conductivity will cause a corresponding change in the electrical resistance of the pair of elements of the Wheatstone bridge which are exposed to the exhaust gas. Hence, when a change occurs in the fuel/air ratio, an unbalance in the Wheatstone bridge results, causing a movement of the pointer in the indicator.

There are indicator assemblies for a single engine and for dual engines. The single engine assembly consists of one analysis cell, one indicator with a single pointer and two sampling tubes. The dual engine assembly has two analysis cells, one dual indicator and four sampling tubes.





### FLANGE—MOUNTING

NAME: Mounting flange

DESCRIPTION: This flange is welded to the exhaust manifold of an airplane engine, and receives the sampling tube of the fuel mixture assembly.

CHARACTERISTICS:

Size.....1 1/4 inches outside diameter, 3/8 inch thick

RELATIONSHIP OF PARTS: Used with:  
Fuel mixture indicator assemblies.

#### ARMY

A. E. REFERENCE NUMBER: 61-4901

SPECIFICATIONS:

General.....94-27844-C.

A. S. C. STOCK NUMBER: Refer to chart.

TECHNICAL ORDER NUMBER: Refer to chart.

PRODUCTION STATUS: Under procurement.

SHIPPING DATA: Shipped as a complete unit.

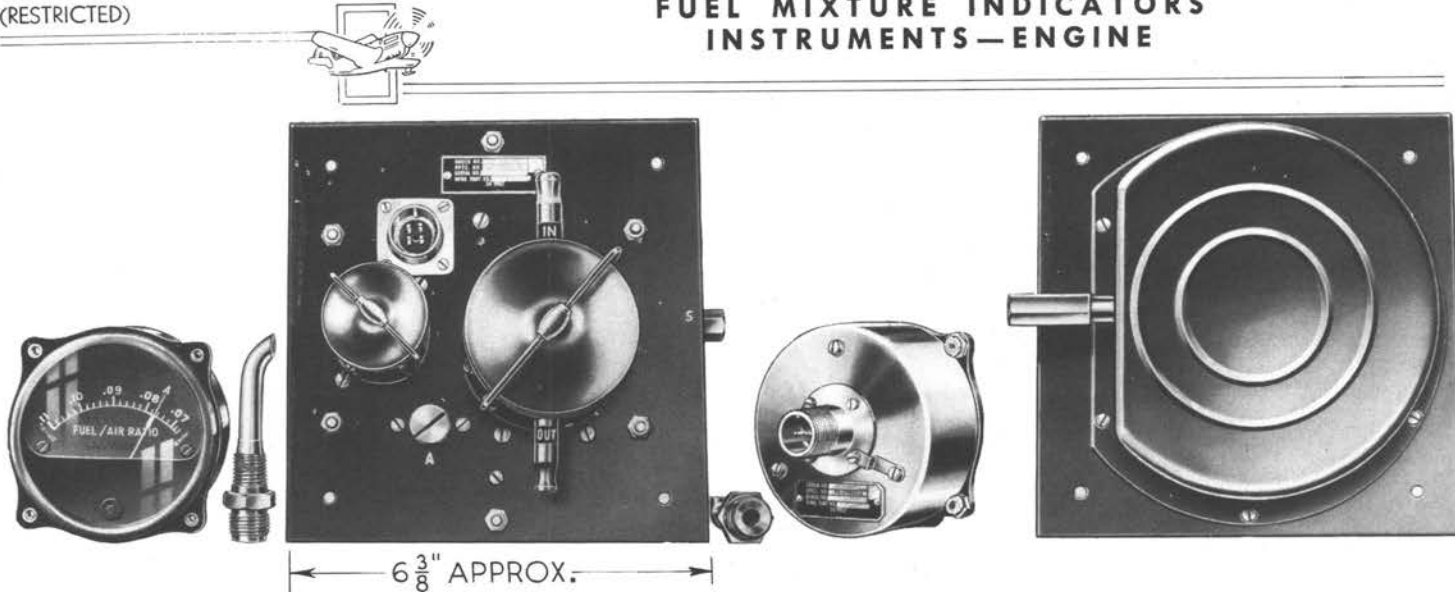
#### NAVY

There is no Navy equivalent for the Army item.

**MODELS BELOW ARE INTERCHANGEABLE**  
Models are used in services as noted in column 3  
A-Army, N-Navy, B-British, C-Commercial

Manufacturer	Manufacturer's Drawing Number	Used By	Air Service Command Stock Number	Army Technical Order Number
Charles Engelhard, Inc.	H-321	A	6100105350	05-3C-1
Cambridge Instrument Co.	10221	A	6100105300	05-3AB-1 05-3AA-1

# FUEL MIXTURE INDICATORS INSTRUMENTS—ENGINE



## INDICATOR ASSEMBLY—FUEL MIXTURE ARMY TYPE A-7

**NAMES:** Fuel mixture indicator assembly  
Exhaust gas analyzer  
Analyzer—exhaust gas

**DESCRIPTION:** This assembly consists of an indicator, an analysis cell and two sampling tubes.

**CHARACTERISTICS: Dimensions:**

Indicator	approximately 3 1/4 by 3 1/4 by 5 inches (including ballast tube)
Analysis cell	approximately 6 3/8 by 6 3/8 by 5 inches
Sampling tubes	approximately 3 inches long, each
Weight	approximately 4 pounds
Voltage	12 volts, direct current
Markings	fluorescent material

**RELATIONSHIP OF PARTS: Used with:**

Two fuel mixture indicator flanges	A. E. Reference Number 61-4901
------------------------------------	--------------------------------

### ARMY

A. E. REFERENCE NUMBER: 61-4900

**SPECIFICATIONS:**

General	94-27844
Detail	94-27992-A

**TYPE DESIGNATION:** A-7

**A. S. C. STOCK NUMBER:** Refer to chart.

**TECHNICAL ORDER NUMBER:** Refer to chart.

**PRODUCTION STATUS:** Not under procurement for initial installation. Superseded by Army type A-7A indicator assembly.

**SHIPPING DATA:** Shipped as a complete assembly including indicator, analysis cell and two sampling tubes.

### NAVY

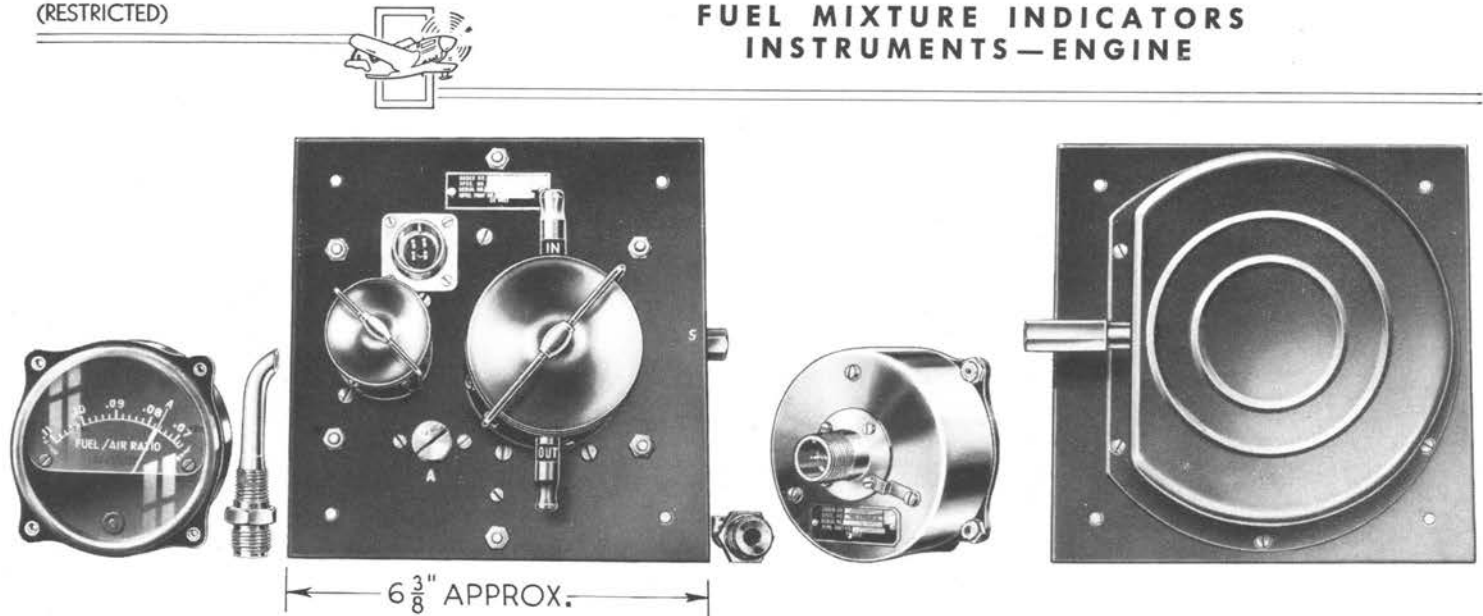
There is no Navy equivalent for this item.

**ALL MODELS BELOW ARE INTERCHANGEABLE**  
**Models are used in services as noted in column 4**  
**A-Army, N-Navy, B-British, C-Commercial**

Manufacturer	Manufacturer's Part and Drawing Number	Used By	Air Service Command Stock Number	Army Technical Order Number	British Reference Number
Cambridge Instrument Co.	Consisting of: ASSEMBLY 11606	A-B	6100214765	05-3AA-1	106A/1445
	Indicator 11622		6100214767		106A/1446
	Analysis cell 11627		6100046795		106A/1447
	2 sampling tubes 10219		6100458250		106AH/162
	Consisting of: ASSEMBLY 12661	A-B	6100214755	05-3AA-1	106A/1445
	Indicator 11622-1		6100214767-5		106A/1450
	Analysis cell 11627		6100046795		106A/1447
	2 sampling tubes 10219		6100458250		106AH/162
Charles Engelhard, Inc.	Consisting of: ASSEMBLY 102341	A-B	6100214768	05-3C-1	106A/1440 *
	Indicator H-376		6100214760		106A/1113
	Analysis cell R-33		6100046792		106A/1441
	2 sampling tubes H-323		6100458550		106AN/46

\*REMARKS: This assembly is identical with Army Type A-7A indicator assembly made by this manufacturer.





**INDICATOR ASSEMBLY—FUEL MIXTURE**  
**ARMY TYPE A-7A**

**NAMES:** Fuel mixture indicator assembly  
Exhaust gas analyzer  
**DESCRIPTION:** This assembly consists of an indicator, an analysis cell and two sampling tubes.  
**CHARACTERISTICS:** Dimensions:

Indicator	approximately 3 1/4 by 3 1/4 by 2 7/8 inches
Analysis cell	approximately 6 3/8 by 6 3/8 by 5 inches
Sampling tube	approximately 3 inches long, each
Weight	approximately 3 1/4 pounds
Voltage	12 volts, direct current
Markings	fluorescent material

**RELATIONSHIP OF PARTS:** Used with:  
Two fuel mixture indicator flanges..... A. E. Reference Number 61-4901

**ARMY**

A. E. REFERENCE NUMBER: 61-4910

**SPECIFICATIONS:**

General	94-27844-C
Detail	94-27992-B
Superseded	94-27992-A

**TYPE DESIGNATION:** A-7A

**A. S. C. STOCK NUMBER:** Refer to chart.

**TECHNICAL ORDER NUMBER:** Refer to chart.

**PRODUCTION STATUS:** Under procurement. Supersedes Army type A-7 assembly.

**SHIPPING DATA:** Shipped as a complete assembly including an indicator, analysis cell and two sampling tubes.

**NAVY**

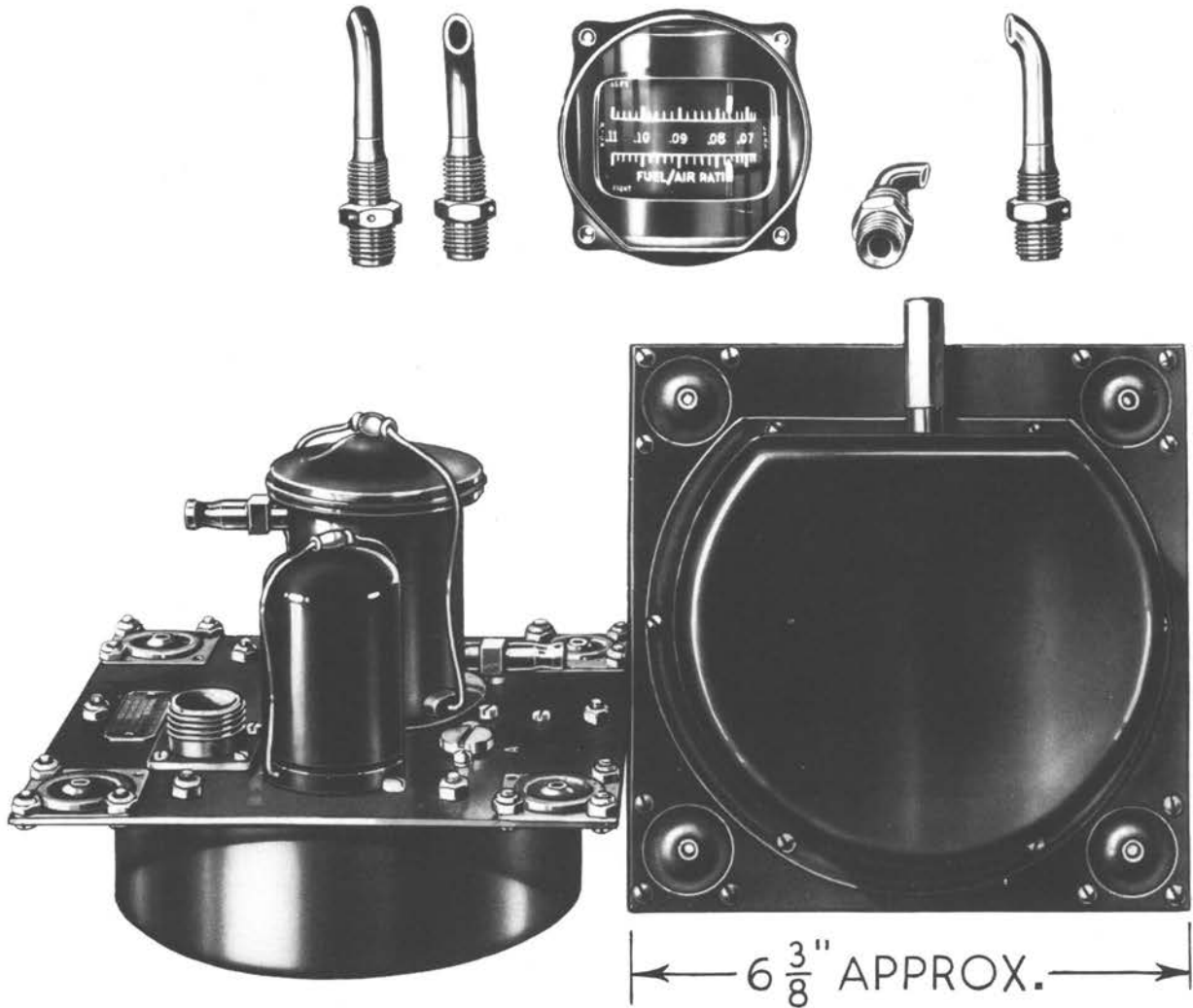
There is no Navy equivalent for this item.

**ALL MODELS BELOW ARE INTERCHANGEABLE**  
**Models are used in services as noted in column 4**  
**A-Army, N-Navy, B-British, C-Commercial**

Manufacturer	Manufacturer's Part and Drawing Number	Used By	Air Service Command Stock Number	Army Technical Order Number	British Reference Number
Cambridge Instrument Co.	Consisting of: ASSEMBLY 13081	A-B	6100214772	05-3AA-1	106A/1424
	Indicator 13077		6100214773		106A/1448
	Analysis cell 13080		6100046850		106A/1449*
	2 sampling tubes 10219		1600458250		106AH/162
	Consisting of: ASSEMBLY 13451	A-B			106A/1424
	Indicator 13439				106A/1451
	Analysis cell 13080		6100046850		106A/1449*
	2 sampling tubes 10219		6100458250		106AH/162
Charles Engelhard, Inc.	Consisting of: ASSEMBLY 102341	A-B	6100214768	05-3C-1	106A/1440
	Indicator H-376		6100214760		106A/1113
	Analysis cell R-33		6100046792		106A/1441
	2 sampling tubes H-323		6100458550		106AN/46

\*Former A. S. C. Stock Number 6100046025.





**INDICATOR ASSEMBLY—FUEL MIXTURE**

**ARMY TYPE B-6**

NAMES: Fuel mixture indicator assembly  
Exhaust gas analyzer

Analyzer—exhaust gas

DESCRIPTION: This instrument consists of a dual indicator assembly, two analysis cells and four sampling tubes for use in a twin engine airplane.

**CHARACTERISTICS:**

Dimensions:

Indicator .....	approximately 3¼ by 3¼ by 3¼ inches
Analysis cells .....	approximately 6½ by 6½ by 5⅜ inches
Sampling tubes .....	approximately 3 inches long, each
Weight .....	approximately 4¾ pounds
Voltage .....	24 volts, direct current
Markings .....	fluorescent material

**RELATIONSHIP OF PARTS:** Used with:

Four fuel mixture indicator flanges..... A. E. Reference Number 61-4901

*(Continued on Page 16)*



# INDICATOR ASSEMBLY—FUEL MIXTURE

(Continued from Page 15)

## ARMY

A. E. REFERENCE NUMBER: 61-5050

SPECIFICATIONS:

General.....94-27844-C.  
Detail.....94-27933-A.

TYPE DESIGNATION: B-6

A. S. C. STOCK NUMBER: Refer to chart.

TECHNICAL ORDER NUMBER: Refer to chart.

PRODUCTION STATUS: Not under procurement for initial installation. Superseded by Army type B-6A indicator assembly.

SHIPPING DATA: Shipped as a complete unit including an indicator assembly, two analysis cells and four sampling tubes.

## NAVY

There is no Navy equivalent for this item.

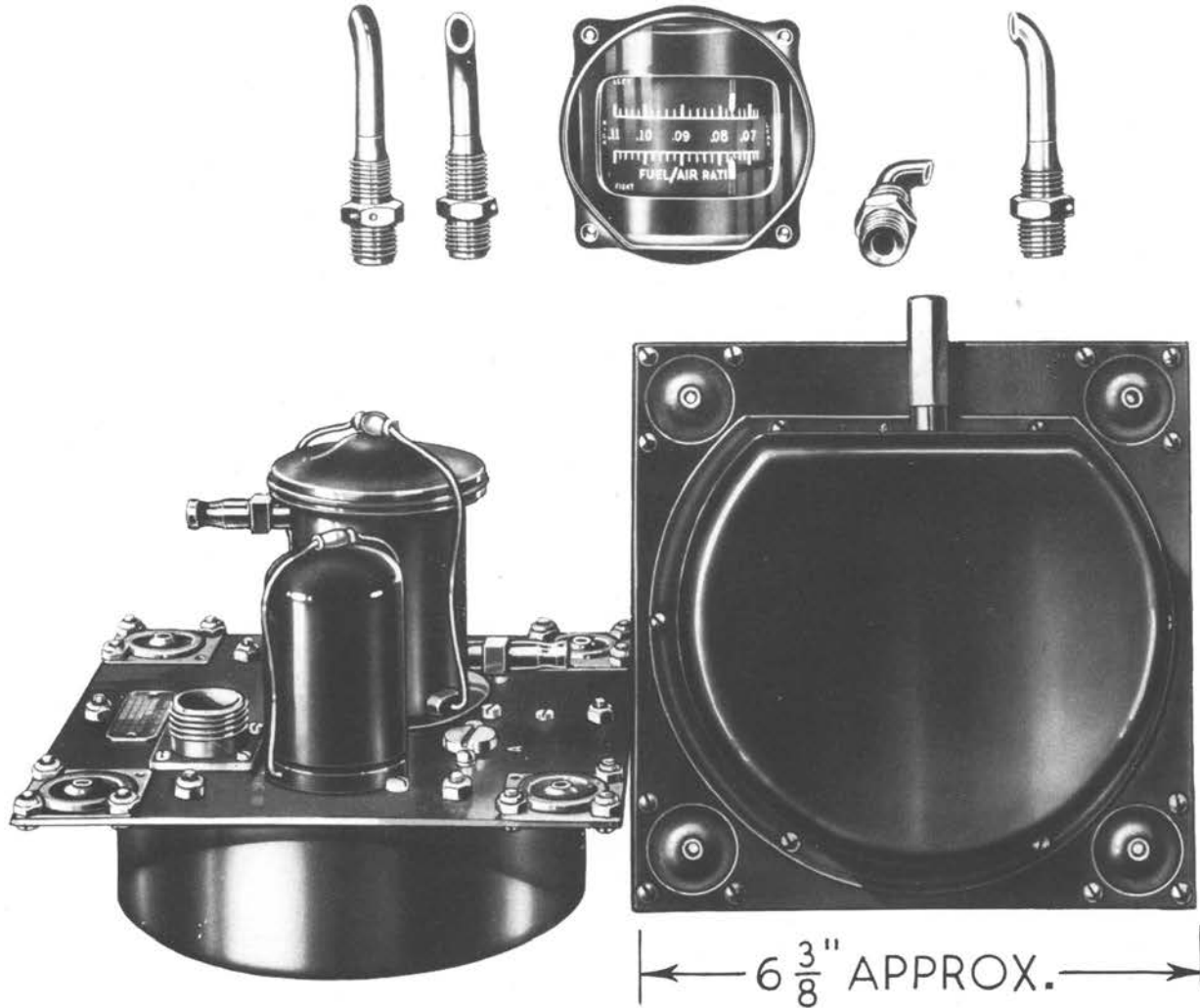
**ALL MODELS BELOW ARE INTERCHANGEABLE**  
**Models are used in services as noted in column 4**  
**A-Army, N-Navy, B-British, C-Commercial**

Manufacturer	Manufacturer's Part and Drawing Number	Used By	Air Service Command Stock Number	Army Technical Order Number	British Reference Number
Charles Engelhard, Inc.	Consisting of: ASSEMBLY 103094	A-B	6100216289-5	05-3C-1	106A/1188 *
	1 indicator H-378		6100216280		106A/1422
	2 analysis cells R-34		6100047270		106A/1444
	4 sampling tubes H-323		6100458550		106AN/46
Cambridge Instrument Co.	Consisting of: ASSEMBLY 11607	A-B	6100216285	05-3AB-1	106A/1453
	1 indicator 11609		6100216287		106A/1454
	2 analysis cells 11627		6100046795		106A/1447
	4 sampling tubes 10219		6100458250		106AH/162
	Consisting of: ASSEMBLY 12656	A-B	6100216289	05-3AB-1	106A/1453
	1 indicator 11609-1		6100216287-5		106A/1455
	2 analysis cells 11627		6100046795		106A/1447
	4 sampling tubes 10219		6100458250		106AH/162

\*REMARKS: This assembly is identical with Army Type B-6A indicator assembly made by this manufacturer.



# FUEL MIXTURE INDICATORS INSTRUMENTS—ENGINE



## INDICATOR ASSEMBLY—FUEL MIXTURE

ARMY TYPE B-6A

NAMES: Fuel mixture indicator assembly  
Exhaust gas analyzer  
Analyzer—exhaust gas

DESCRIPTION: This assembly consists of a dual indicator, two analysis cells, and four sampling tubes.

### CHARACTERISTICS:

Voltage.....	24 volts, direct current
Markings.....	fluorescent material
Dimensions:	
Indicator.....	approximately 3¼ by 3¼ by 4 inches
Analysis cells.....	approximately 6½ by 6½ by 5 inches, each
Sampling tubes.....	approximately 3 inches long
Assembly weight.....	approximately 3½ pounds

### RELATIONSHIP OF PARTS: Used with:

Four fuel mixture indicator flanges..... A. E. Reference Number 61-4901.

(Continued on Page 18)



## INDICATOR ASSEMBLY—FUEL MIXTURE

(Continued from Page 17)

### ARMY

A. E. REFERENCE NUMBER: 61-5060

**SPECIFICATIONS:**

General ..... 94-27844-C.  
 Detail ..... 94-27933-B.  
 Superseded ..... 94-27933-C.

TYPE DESIGNATION: B-6A

A. S. C. STOCK NUMBER: Refer to chart.

TECHNICAL ORDER NUMBER: Refer to chart.

PRODUCTION STATUS: Under procurement.

SHIPPING DATA: Shipped as a complete unit, including an indicator, two analysis cells and four sampling tubes.

### NAVY

There is no Navy equivalent for this item.

**ALL MODELS BELOW ARE INTERCHANGEABLE  
Models are used in services as noted in column 4  
A-Army, N-Navy, B-British, C-Commercial**

Manufacturer	Manufacturer's Part and Drawing Number	Used By	Air Service Command Stock Number	Army Technical Order Number	British Reference Number	
Cambridge Instrument Co.	Consisting of: ASSEMBLY 13082		A-B	6100216295	05-3AB-1	106A/1423
	1 indicator	13078		6100216300		106A/1456
	2 analysis cells	13079		6100047280		106A/1452
	4 sampling tubes	10219		6100458250		106AH/162
	Consisting of: ASSEMBLY 13552		A-B			106A/1423
	1 indicator	13500				106A/1457
	2 analysis cells	13079		6100047280		106A/1452
	4 sampling tubes	10219		6100458250		106AH/162
Charles Engelhard, Inc.	Consisting of: ASSEMBLY 103094		A-B	6100216289-5	05-3C-1	106A/1188
	1 indicator	H-378		6100216280		106A/1422
	2 analysis cells	R-34		6100047270		106A/1444
	4 sampling tubes	H-323		6100458550		106AN/46







# TRANSMITTER ASSEMBLY—FUEL OR OIL PRESSURE

(Continued from Page 19)

## ARMY

A. E. REFERENCE NUMBER: 61-2327

### SPECIFICATIONS:

Detail.....AN-T-36  
Superseded.....27383-A

AN OR A. A. F. DRAWING NUMBER: AN5765

AN PART NUMBER: AN5765-1 (assembly); AN5765-2 (transmitter); AN5765-3 (gage fitting)

TYPE DESIGNATION: Former type A-1

A. S. C. STOCK NUMBER: Refer to chart.

PRODUCTION STATUS: Under procurement.

SHIPPING DATA: Shipped as a complete unit, including transmitter and gage fitting. Dimensions of carton approximately 3½ by 3½ by 5⅞ inches. Gross weight approximately 1 pound 6 ounces.

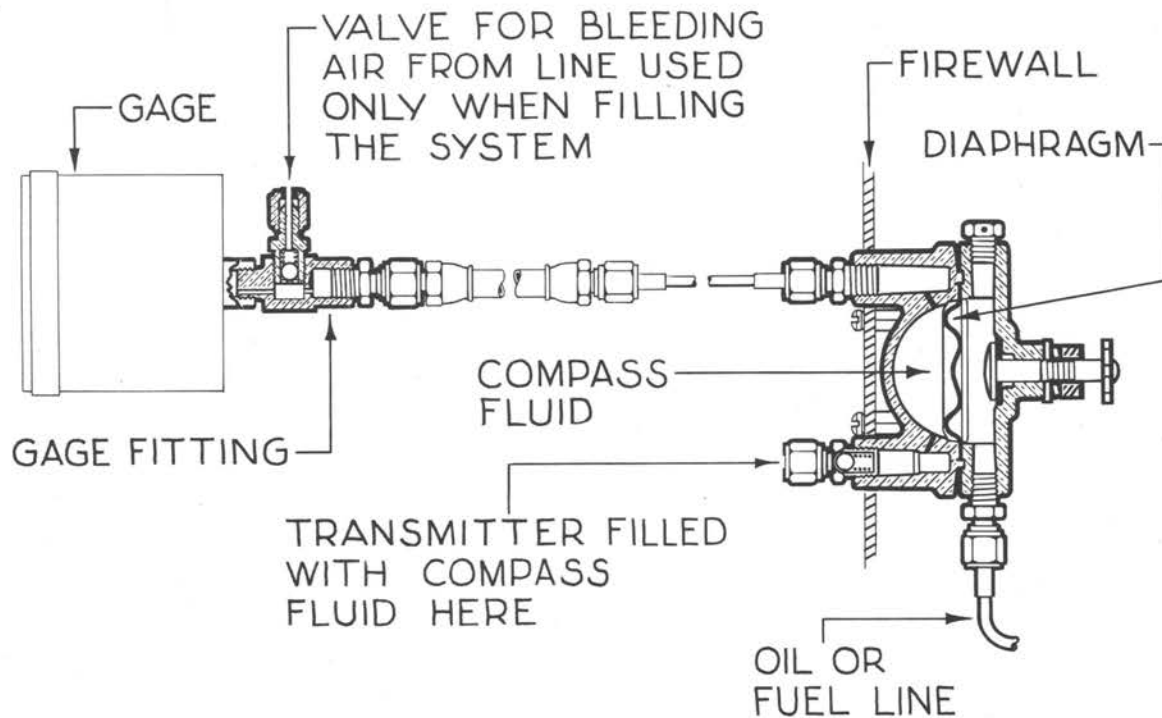
## NAVY

TYPE DESIGNATION: AN5765-2

### SPECIFICATIONS:

Detail.....AN-T-36

PROCUREMENT STATUS: Not yet under procurement for initial installation.



**ALL MODELS BELOW ARE INTERCHANGEABLE**  
Models are used in services as noted in column 3  
A-Army, N-Navy, B-British, C-Commercial

Manufacturer	Manufacturer's Part and Drawing Number	Used By	Air Service Command Stock Number	Army Technical Order Number	British Reference Number
King-Seeley Corp.	32600	A-N-B	6100427075	AN05-70-4	106A/1351
Minneapolis Honeywell Regulator Co.	G1000 A4 CA1	A-B		AN05-70-4	106A/1351
	G1000 A2 CA1	A-N-B	6100427675	AN05-70-4	106A/1351
Rochester Manufacturing Co.	2150	A-N-B	6100427070	AN05-70-4	106A/1351