

## Contact Information

CureUV.com

2855 S. Congress Ave. Suite C  
Delray Beach, FL, 33445  
Toll Free: 800-977-7292  
Fax: 561-404-7206  
E-mail Us- [Sales@cureuv.com](mailto:Sales@cureuv.com)

## GermAwayUV 600 CFM Knight UV Air Scrubber

**SKU:** 201185



Please read this manual carefully before using the product.

After reading, please take good care of this manual for inspection



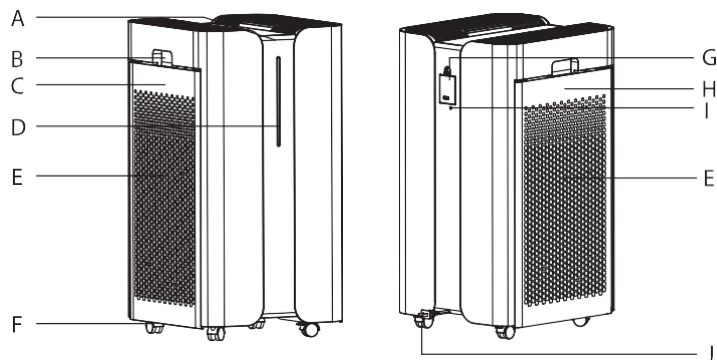
---

# Table of Contents

Description. ....	2
Safety precautions. ....	2
Important matters. ....	3
Working principle.....	3
Before use.....	3
Use.....	4
Maintenance.....	5
Storage.....	6
Common faults.....	6
Warranty.....	6
After-sales service. ....	7

To better use our products; before use, please read this manual carefully and keep it in a safe place. The product is subject to the actual packaging and will be subject to change without prior notice.

---



## Description

### Product description

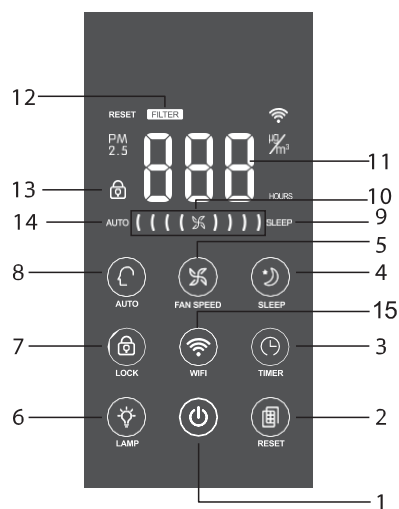
- A- Control Panel
- B- Handle
- C- Left Board
- D- Air Quality Indicator Light
- E- Air Inlet
- F- Wheel
- G- Dust Sensor Cover
- H- Right Board
- I- Odor Sensor Inlet
- J- Power Cord

### Control Button

- 1- Power Switch
- 2- Filter Reset
- 3- Timed Shutdown Function
- 4- Sleep Mode Switch
- 5- Wind Speed Adjustment
- 6- Lighting Adjustment
- 7- Child lock Switch
- 8- Automatic Mode Switch
- 15-Wifi Switch

### Control Panel Indicator

- 9 - Sleep Mode Indicator
- 10-Wind Speed Indicator
- 11 - PM2.5 / Timed Display
- 12 - Composite Filter Replacement Indicator
- 13- Negative Ion Function Indicator
- 14- Auto Mode Indicator



## Safety Precautions

Please read this manual carefully before using the product and keep it in a safe place.

You need to read these instructions carefully and follow the recommendations below:

- For your safety, this product complies with applicable standards and regulations (low voltage, electromagnetic compatibility, environmental protection)
- This product is not suitable for people with physical, sensory or mental disabilities (including children), or those who lack using experience or related knowledge. Unless they are supervised by those responsible for their safety, or give them the relevant guidance of the machine in advance.
- Children should be taken good care of to ensure that they do not play with the product.
- This product can be used for children aged eight and over, people who lack relevant experience and knowledge, or physical, sensory or mental, but they must be trained or instructed to know how to use this product safely and know the dangers involved in this product.
- Do not use this product if the power cord is damaged. If the power cord is damaged, in order to avoid danger, it must be replaced by the specialists of the manufacturer, its maintenance department or similar department.
- Children shall not clean and maintain the product without supervision.
- When servicing this product, refer to the "Maintenance" section of the manual.
- Please put the power cord out of reach of children under the age of eight.
- This product is designed for indoor use and should not be used in industrial ● applications.
- If the product is damaged by improper operation, the warranty card is invalid.
- Do not operate the product in dusty and / or wet places or in places where there is a fire risk.
- Always make sure that the electrical plug and the power cord are good before use.
- Do not insert foreign bodies into equipment(such as needles).
- Do not pull the power cord or equipment, or even unplug the plug from the socket.
- Before using, expand the length of the power cord to the appropriate length.

## IMPORTANT

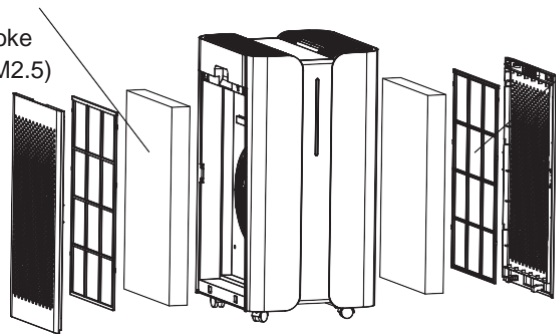
- Do not cover the air inlet or outlet.
- Don't touch the appliance with wet hands.
- Do not let any liquid into the product.
- Do not use this product in damp places.
- Keep this product away from the heat source.
- Do not place anything or insert any foreign object on this product  
Please keep this product away from flammable goods or products (such as curtains, Aerosol, Organic solvents, etc).
- Use the product on a stable surface, do not tip or tilt the product;
- When not using the product for a long time: Turn off the device and unplug the power cord
- Turn off the device and unplug it before moving.
- Unplug the device when assembling or cleaning the device.

## Working principle

Air purifier filters large particles of dust, hair, PM2.5, formaldehyde, allergens, etc. to remove odors and purify pollutants from the air, Fresh air to protect your health and your family.

### Composite filter

- Volatile organic gases (VOCs)
- Odor
- Secondhand smoke
- Tiny particles (PM2.5)
- Pollen
- Mites
- Animal allergen
- Bacteria/virus



### Pre-filter

- Large particle dust
- Hair
- Pet hair

## Before using

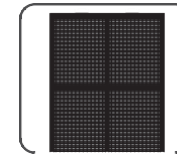
Select the room where you need to purify the air and place the purifier on a stable floor or countertop in the room. In order to make the air flow freely, avoid placing the purifier behind the curtains, under the window, next to the furniture or shelves, and near any obstacles. Keep at least 50 cm of free space on each side of the purifier.

Please confirm that the packaging materials used to protect the product have been removed before use.

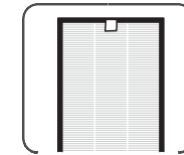
Please confirm at the same time

- The voltage of your home matches the voltage of the device identification.
- Your device can be connected to a non-grounded power plug. This device is a Class II appliance (double insulated)
- The air inlet and outlet are completely unobstructed;
- The filter and front cover are installed correctly (see below);
- If the front cover is not properly installed, the device will not work properly.

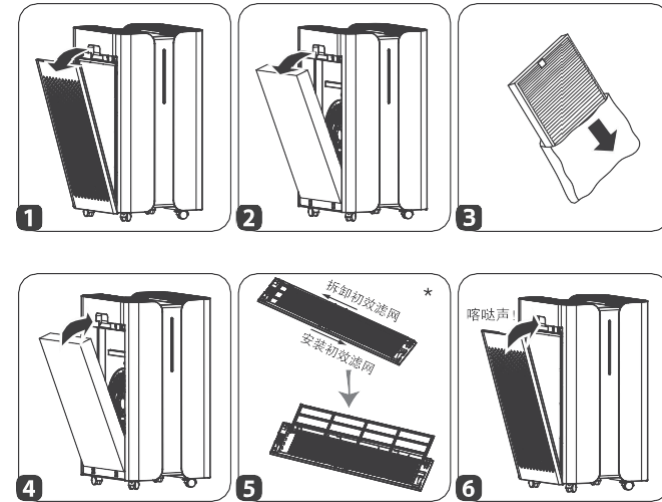
This product is equipped with 2 kinds of filters:



Pre-filter



Composite filter  
(Activated carbon+HEPA)



Note:

1. For best purification, please use the filter provided by CUREUV;
2. Installation and disassembly of the pre-filter, suitable for pre-filter cleaning operation.

- Install the filter (Figure 1-6)

---

**Use:**

- Power on for the first time, press the power switch (1), the machine starts to work;
- Shut down under continuous power, turn it on again, enter the working mode before shutdown;
- If the purifier is accidentally powered off during normal use (such as Power failure at home), after power-on, the machine defaults to the working mode before power off.

The device is equipped with high precision dust sensor and odor sensor, which can monitor indoor air volume in real time. The color change of the air quality indicator shows the air quality in the current room.

In the automatic purification mode, the device can automatically identify the degree of pollution in the room and adjust the wind speed accordingly.

Air quality indicator light color	Blue	Green	Yellow	Red
Air quality	Excellent or good	Slight pollution	Moderate pollution	Heavy pollution

Note that the values on the display differ from the local weather forecast and are for reference only.

## Operation instructions

### ● Power switch


Turn the purifier on or off


### ● Wind speed adjustment


You can choose 4 clean air speeds according to your requirements.

Manual: In this mode, you can select the 4 cleaning speed by pressing the wind speed adjustment button.

 Breeze gear: the purifying wind speed is small at this time;

 Medium speed gear: At this time, the purified wind speed has been slightly increased, which is suitable for better air quality.

 High-speed gear: At this time, the purifying wind speed is large, suitable for most polluted indoor conditions;

 Extreme speed gear: At this time, the purification wind speed is the largest, which can quickly purify pollutants, suitable for poor air quality environment, such as smoking.

### ● Auto mode:

In this mode, the device will automatically adjust the wind speed based on the air quality data detected by the sensor. This mode is suitable for most application scenarios.

### ● Child lock:

Long press the child lock for 3 seconds in working condition, child lock key lights, and no key is functional during this period.

Long press the child lock 3 seconds again to unlock it, child lock lights off, and all the key back to functional again.

### ● WIFI connect:

Long press the WIFI key for 5 seconds in working condition to turn on the WIFI mode. WIFI key flash and ready for the network connect. WIFI key will be long lights when successfully connect the network. Long press the WIFI key again can reset the WIFI.

### ● Sleep function:

In the working mode, press the sleep button to enter the sleep mode directly, and purify the wind speed in the sleep mode. Pressing the sleep button again will exit the sleep mode and automatically restore to the working mode before entering sleep mode.

### ● Brightness setting:

In the working mode, press this button briefly to cycle through Mode 1, Mode 2 and Mode 3 to adjust the brightness of the PM2.5 display and the control panel indicators. In sleep mode, the brightness remains in mode 3 and cannot be adjusted.

Mode	PM2.5 display / air quality indicator light brightness	Panel indicator brightness
1	Bright	Bright
2	Soft	Soft
3	Extinguish	Soft



## Timed shutdown function:

When the purifier is working, you can set a timed shutdown. Each short press of the key (3) increases by 1 hour, long press the button to quickly increase the timing time, and the time value is displayed on the display. Select the required working time (1 to 24 hours), and the purifier will automatically stop working after the set time.

Note: When the display shows PM2.5 value, short press this button to switch to the shutdown time display value.

## Maintenance:

Before any maintenance operation, be sure to use the power switch. (1) Turn off the power supply and unplug it. You can clean the product body with a slightly damp cloth.

**IMPORTANT:** Do not use any abrasive material to prevent damage to the surface of the device. **When the filter life reaches 95%, the corresponding filter replacement indicator starts to flash. The "composite filter" flashes to indicate that the composite filter life is about to end.**

When the composite filter must be replaced, the indicator lamp of "composite filter" (12) will be on and the purifier will stop running.

**Note:** When your purifier stops running, please check if you need to replace the composite filter.

- The "composite filter" long light indicates that the composite filter needs to be replaced;
- The pre- filter can be repeated use: use a vacuum cleaner or water wash to remove dust.

**Important Tips:** After replacing the filter, press the filter reset button for 3 seconds.

### Forced reset:

If you replace the filter before the end of its service life, the filter life cycle shall be forced to be reset:

1. In working mode, long press the filter reset button for 3 seconds, and the "composite filter" replacement indicator flashes;
2. Press the filter reset button for 3 seconds again, and the filter life will be recalculated by the purifier;
3. In this mode, if there is no operation for 10 seconds, the reset mode will be canceled.

### Note:

- If the pre filter is not cleaned in time, the efficiency of the purifier will be reduced;
- Do not use a wet pre filter;
- Only the pre filter can be washed and reused. The composite HEPA filter cannot be cleaned or reused. Do not wash it.
- Replace the filter in turn, please refer to "Before Use" --- "Install Filter".

You can use the following type of filter for replacement.

Filter	Model
Composite HEPA filter	KJG800P9-58

### "Warm Tips":

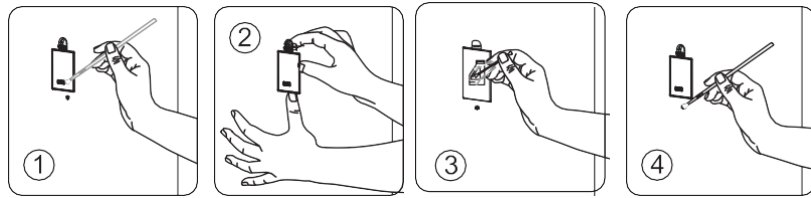
- If you are allergic or have asthma, please avoid touch the used filter;
- Wear gloves when replacing the filter, or wash your hands after replacement;
- Put the used filter into a closed bag and throw it away to avoid the spread of pollutants.

### Air quality sensor cleaning

Dust sensors and odour sensor inlets should be properly cleaned regularly (every 2 months). Make sure the purifier is turned off and unplugged before cleaning the sensor:

1. Clean the sensor's intake and outlet ports with a soft brush or cloth (Figure 1));
2. Open the sensor cover (Figure 2);
3. Gently damp the cotton swab to remove the dust from the sensor cover and the dust-proof net; dry with a dry cotton swab (Figure 3);

4. Clean the odor sensor housing with a soft brush or vacuum cleaner (Figure 4)



**Important tips:**

- Never use detergent or metal objects to clean the sensor;
- If there is no regular cleaning, it will affect the sensor sensitivity of the purifier;
- The cleaning frequency of the sensor varies according to the working environment of the purifier; in a dusty environment, the cleaning frequency should be appropriately increased.

**Storage:**

When you are not using the purifier for a long time, store it in a dry, cool place.

**Common malfunctions:**

Do not disassemble the machine yourself; improper repair may cause danger to the user! Before contacting the CureUV support hotline, please check the following troubleshooting table:

Malfunction	Checking	Processing method
Unable to start	Is the power plugged in?	Plug in the power supply at the correct voltage
	Are all the lights off?	Press the power button to select the desired function
	Is there a power outage?	Device is available when power is restored
	Are the left and right covers covered?	Install the left and right covers correctly
The airflow is much weaker than before	Does the filter need to be cleaned or replaced?	Check whether the filter is clean or has reached the replacement cycle; replace or clean the filter if necessary.
There is bad smell in the air outlet	Does the filter need to be cleaned or replaced?	Check whether the filter is clean or has reached the replacement cycle; replace or clean the filter if necessary.
Wind speed cannot change automatically	Is it manual mode?	Choose the appropriate mode of operation
Air quality indicator does not change color	Whether the sensor air inlet is covered by dust	Clean sensor air inlet

**Warranty Contact: 800-977-7292**

This unit comes with a 1-year Warranty applicable from the date of purchase. If the following situations occur—equipment failure, the device or power cord is damaged, or the device is not properly working—please contact the CureUV tech support hotline at 800-977-7292.