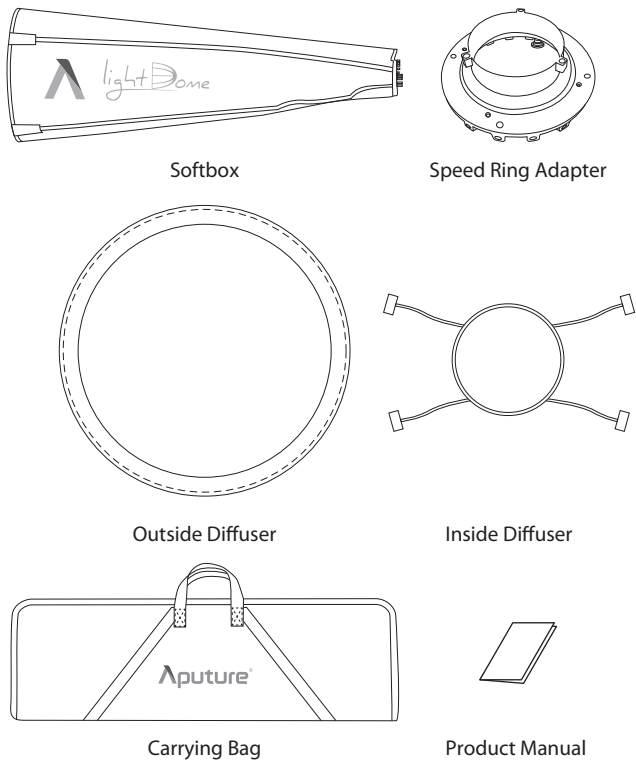


Aputure's Light Dome is a deep softbox with Bowens mount for the **Light Storm LS C120** LED video light and other LED video light which with Bowens mount.

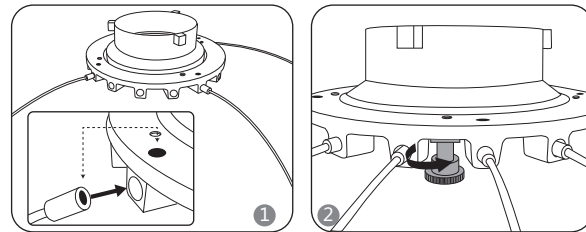
Item Check List



Detailed product manual for Light Dome can be found on the movie solution page on www.aputure.com.

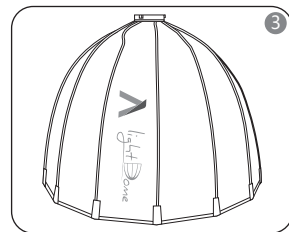
Installation

1) Speed Ring Adapter installation



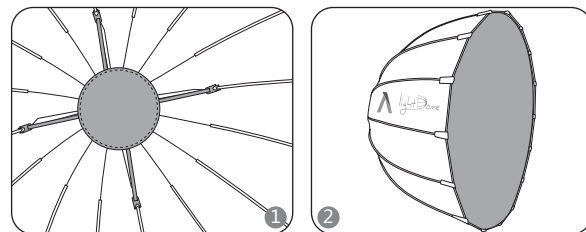
Red dot match: Insert bracket to speed ring adapter, symmetrically install all bracket

Use clamp handle to fasten the speedring adapter

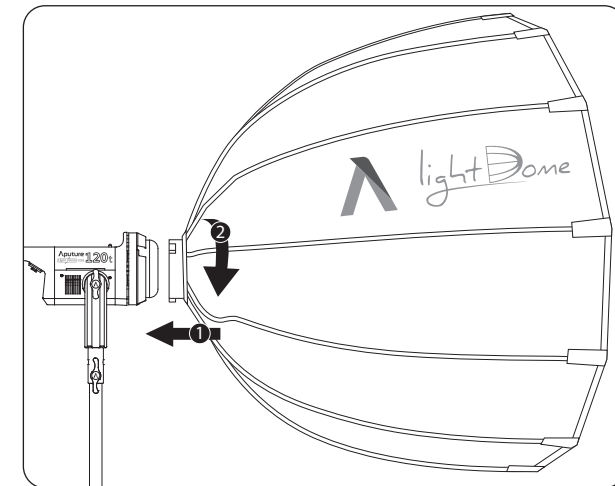


Stick magic strip well

2) Diffuser installation



3) Light Dome installation



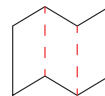
Specifications

Item	Dimension	Net Weight
Softbox	620 mm (24.4") (Depth) Φ 900 mm (35.4")	1.35 kg (2.98 lb)
Outside Diffuser	Φ 885 mm (34.8")	
Inside Diffuser	Φ 235 mm (9.3")	
Speed Ring Adapter	Standard Bowens Mount	

Trademarks

Bowens is a trademark or registered trademark of Bowens in the P.R.C and other countries.

折页方式：



为折线(不印刷)

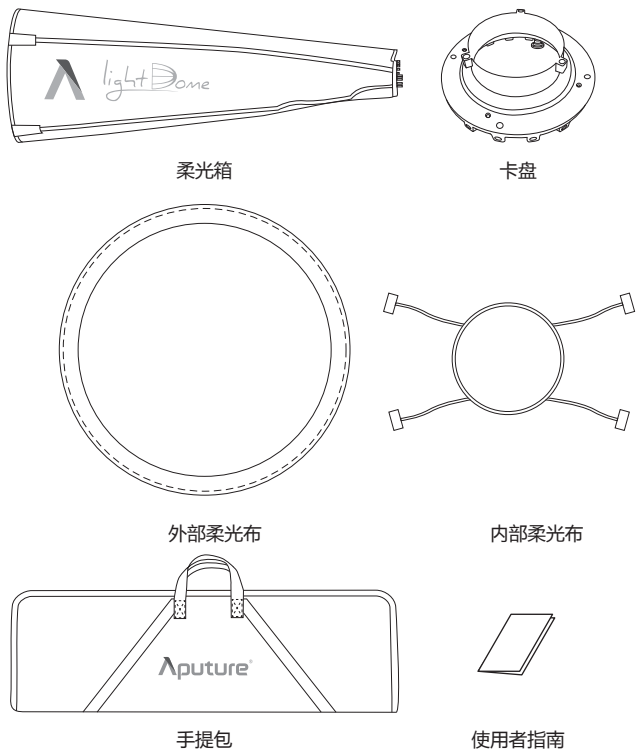
折页成型 (英文在正面)：



Aputure® 深圳市爱图仕影像器材有限公司		图号	AP-047-PR-03
设计项目	047 柔光箱 说明书	版本	V1.0
尺寸(mm)	270*140mm 折页尺寸: 90*360 mm	设计师	Ein
材质工艺	70g 书纸, 正反两面印刷	日期	20160712
备注	料号: 500036014001		

爱图仕光·风暴多用途抛物线反光罩采用标准保荣卡口，是一款搭配爱图仕品牌光·风暴LS C120 系列影视灯并同时兼容其他品牌保荣卡口影视灯的产品。

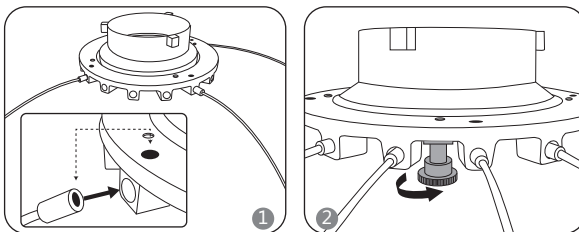
物品清单



您可以在本公司网站 <http://www.aputure.com/cn> 下载本产品的详细使用者指南。

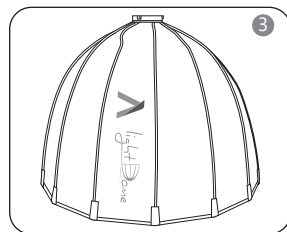
安装方式

1) 安装卡盘



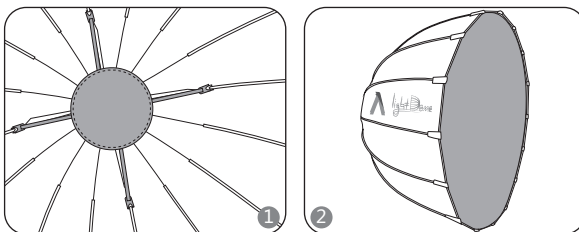
红点标识支撑杆插入对应红点卡盘孔，
对称安装所有支撑杆

旋紧固定手柄

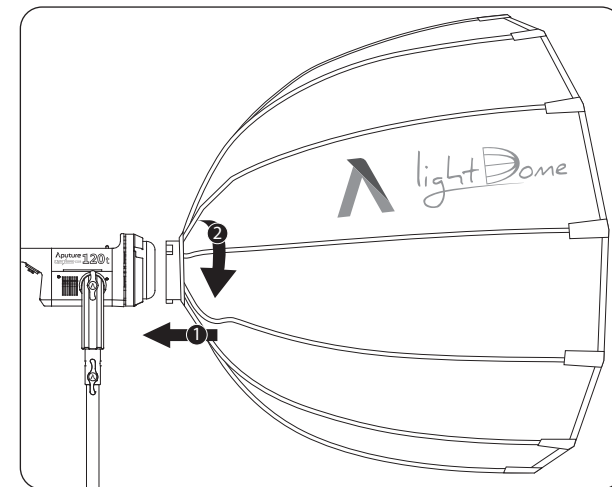


粘上魔术贴

2) 安装柔光布



3) 安装至灯体



规格参数

物料	尺寸	净重
柔光箱	620 mm (24.4 ") (深度) Φ 900 mm (35.4")	1.35 kg (2.98 lb)
外部柔光布	Φ 885 mm (34.8")	
内部柔光布	Φ 235 mm (9.3")	
卡盘	标准保荣卡口	

商标声明

Bowens等是保荣公司在中国或其他国家的商标及产品型号。