

Aputure®

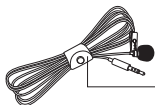
A.lav ez

Fit for Smartphone or Tablet

Product Manual

English

1. Item check list



Lavalier



Cord Organizer



Carry Case



Windshield

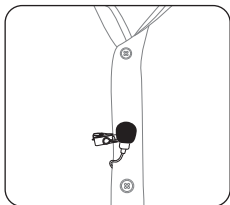
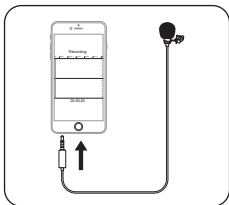


Product Manual

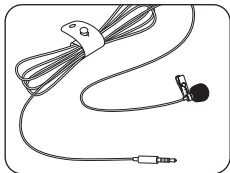
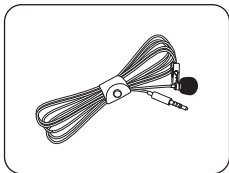


Warranty Card

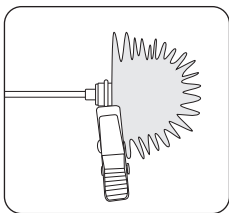
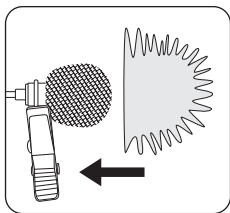
2. The use of lavalier



3. The use of cord organizer



4. The use of windshield



5. performance parameter

Polar Pattern	Omnidirectional
Maximum SPL	100dB (@1kHz,1% THD into 1k Ω)
Frequency Range	50Hz~20kHz
THD	<1%
Output Impedance	600 Ω
Dynamic Range	114dB(per IEC651)
Sensitivity	-41dB \pm 2dB re 1V/Pa @1kHz
Signal/Noise	65dB SPL (@1kHz,rel 1Pa per IEC651)

- The product is certificated by RoHS and CE. Please operate the product in compliance with the operation standards. Please note that this warranty does not apply to repair arising out of the malfunction, although you may request such repairs on a chargeable basis.
- The instructions and information in this manual are based on thorough, controlled company testing procedures. Further notice will not be given if the design and specifications change.

Detailed product manual for A.Lav ez can be found on the movie solution page on www.aputure.com.