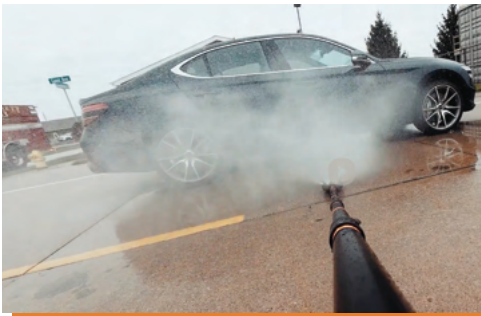


DEPLOYMENT INSTRUCTIONS

Mister™ may be used alone or in conjunction with EV blanket.
Refer to *Precautions & Warnings* section.
Only those who are trained in fire safety should use these products.

MISTER COMPONENTS

- **Spray head with water mist technology**
 - Features multiple nozzles for omni-directional spray.
 - Designed to deliver 10 gpm low-flow water mist spray (true firefighting droplet size / <1,000 microns) at Mister head.
 - Low-profile clearance: spray head 2.25" tall.
- **Four pipe segments**
 - First pipe segment has in-line twist valve and universal "always active" swivel to turn flow of water on and off. It also has 1 1/2" NH threads designed to connect to standard 1 3/4" hand line from fire truck.
 - Remaining three pipe segments are interchangeable with each other.



PREFERRED DEPLOYMENT

It is recommended that you first deploy an EV Fire Suppressor Blanket over vehicle (see separate blanket deployment instruction card), then deploy Mister under blanket and vehicle. Covering vehicle quickly with blanket starts to control flames, providing a degree of protection while Mister is being assembled. However, since Mister may be used by itself in certain situations for stand-alone cooling, these instructions will cover both scenarios.

STEP 1: ASSEMBLE MISTER

in-line twist valve



Connect all four pipe segments and spray head together. Spray head should be at one end, and pipe with in-line twist valve should be at the other end. Pipes and spray head have 1 1/2" NH threads and are equipped with standard lugs. Segments should generally seal with hand-tight connection, but if needed, use lug wrenches to seal any leak points.

STEP 2: CONNECT TO WATER SUPPLY



Connect first pipe segment (which contains in-line twist valve) to 1 3/4" hand line from fire truck. When setting the pressure at the truck, keep in mind you will need 100 psi at the Mister head in order to achieve the recommended 10 gpm flow rate.

STEP 3: POSITION UNDER VEHICLE



Scenario A (preferred deployment):

With EV blanket already covering vehicle

To start flow of water, open Mister in-line valve by twisting counterclockwise. Then, as a two-person operation, lift outer edge of blanket with pike or Brimstone extendable pole and slide spray head into position under vehicle. For safety, only lift blanket enough to fit Mister underneath.



Scenario B (alternate deployment) : No EV blanket

To start flow of water, open Mister in-line valve by twisting counterclockwise. Then, slide spray head into position under vehicle.

Ensure spray head is positioned under centerline of vehicle.

For vehicles with ground clearance of less than 10" (i.e. smaller sedans and crossovers), position the spray head more toward front or rear of vehicle to be closest to where thermal runaway is occurring.

Because spray head creates dome-shaped pattern, angle of insertion under vehicle is not important.

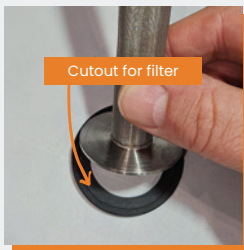
Note: Even though the recommended process calls for deploying the EV blanket first, then the Mister, an EV blanket can still be deployed over a vehicle after the Mister is already in place.

STEP 4: EVALUATE SITUATION



- Leave spray on for a minimum of 30 minutes.
- After that time, if situation warrants, slide Mister back out from underneath vehicle.
- Then, turn Mister valve clockwise to shut off flow of water.
- While EV blanket is still in place over vehicle, use IR camera to determine if any hot spots remain and redeploy Mister, if needed.
- If no hot spots remain, remove Mister and EV blanket when deemed safe to do so.
- Continue to evaluate situation, ensuring there are no reignitions, until threat has been neutralized.

STEP 5: AFTER EVENT MAINTENANCE: CHECK FILTER



The washer is specially designed to allow the filter to seat with an all-around seal.

To assemble, place the filter in the fitting first then followed by the washer, as shown.

Special nozzles create the Mister's fine water mist spray. An in-line mesh filter, located immediately after the twist valve on the first pipe segment, helps protect the nozzles from clogging.

After each use, be sure to check this filter and, if needed, rinse it out. To do this, use a lug wrench to remove the valve from the pipe and access the in-line mesh filter.

If there is any damage to the filter, purchase a replacement filter.

Materials and testing: We are proud of our products. Our materials are state of the art, and our testing is thorough. Visit [BrimstoneFireProtection.com](https://www.brimstonefireprotection.com) for specific information.

HOW IT WORKS

- The Mister is designed to be used in conjunction with an EV blanket during an electric vehicle fire—creating a comprehensive EV Fire Suppressor System.
- The Mister delivers a 10 gpm low-flow water mist spray (firefighting droplet size $<1,000$ microns) directly to the vehicle's undercarriage to cool the chassis, pulling heat away from the battery modules, to shut down a thermal runaway event. Tests validate the Mister's low-flow rate is as effective as high-flow models, while preserving water resources and reducing the amount of toxic runoff. The fine mist can also help mitigate and dampen vapor cloud ignitions that could occur underneath an EV blanket.
- Covering a vehicle quickly with an EV blanket, when done with a good ground seal, provides a measure of containment and protection. It helps deprive the fire of free oxygen, thus suppressing flames, which in turn lowers the temperature and decreases the smoke volume.
- In certain situations, the Mister may be used for stand-alone cooling and has been found to offer effective undercarriage coverage in winds up to 25 mph.

Train before an emergency:

We recommend that you familiarize yourself with instructions and warnings and watch training videos prior to using the Mister and/or EV blanket. BE PREPARED!

Access training
and safety
tips here...



PRECAUTIONS & WARNINGS

Use Mister and EV blanket at own risk: Approach overheating battery or electronic device at your own risk. Due to the unpredictable nature of battery fires, the multitude of battery types, and other factors, user should assess severity of hazard to avoid harm.

Take precautions: Only those who are trained in fire safety should use these products. Deploy EV blanket and Mister only when safe to do so. Follow fire safety protocols. Avoid inhaling smoke and toxic fumes. Maintain safe distance from threat.

Danger of reignition: Do not remove EV blanket or turn off Mister spray too soon. Ensure that the battery thermal runaway event has stopped and hot surfaces have cooled before removing blanket; otherwise, reignition is possible.

Vapor cloud ignition: The accumulation of flammable gases (emitted from batteries during thermal runaway) in an enclosed space may result in vapor cloud ignitions under the blanket, momentarily causing the blanket edges to lift and vent gasses and flames. Stay a safe distance away from threat.

Removal of blanket: Only emergency personnel should remove the blanket once the threat has been neutralized.