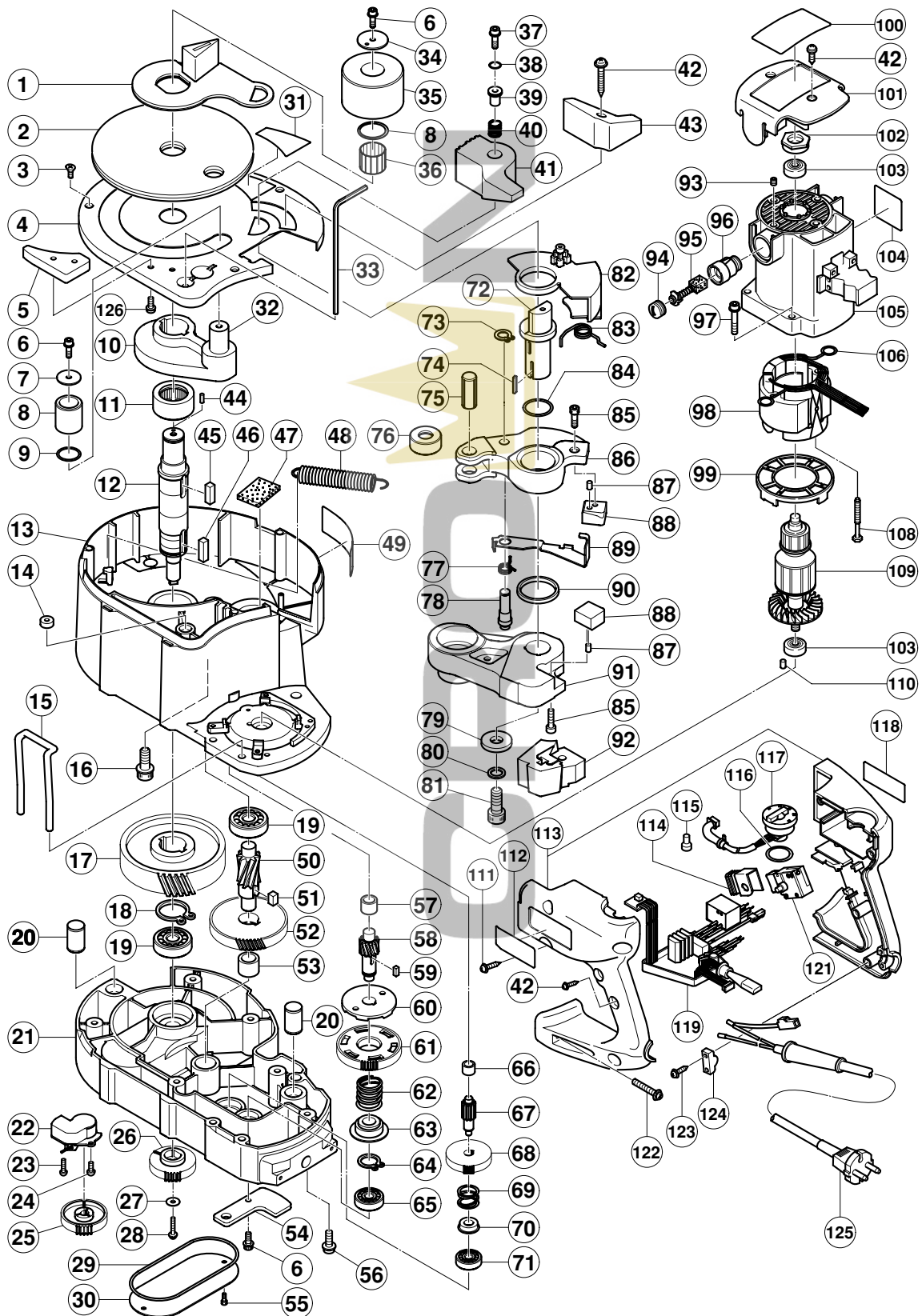
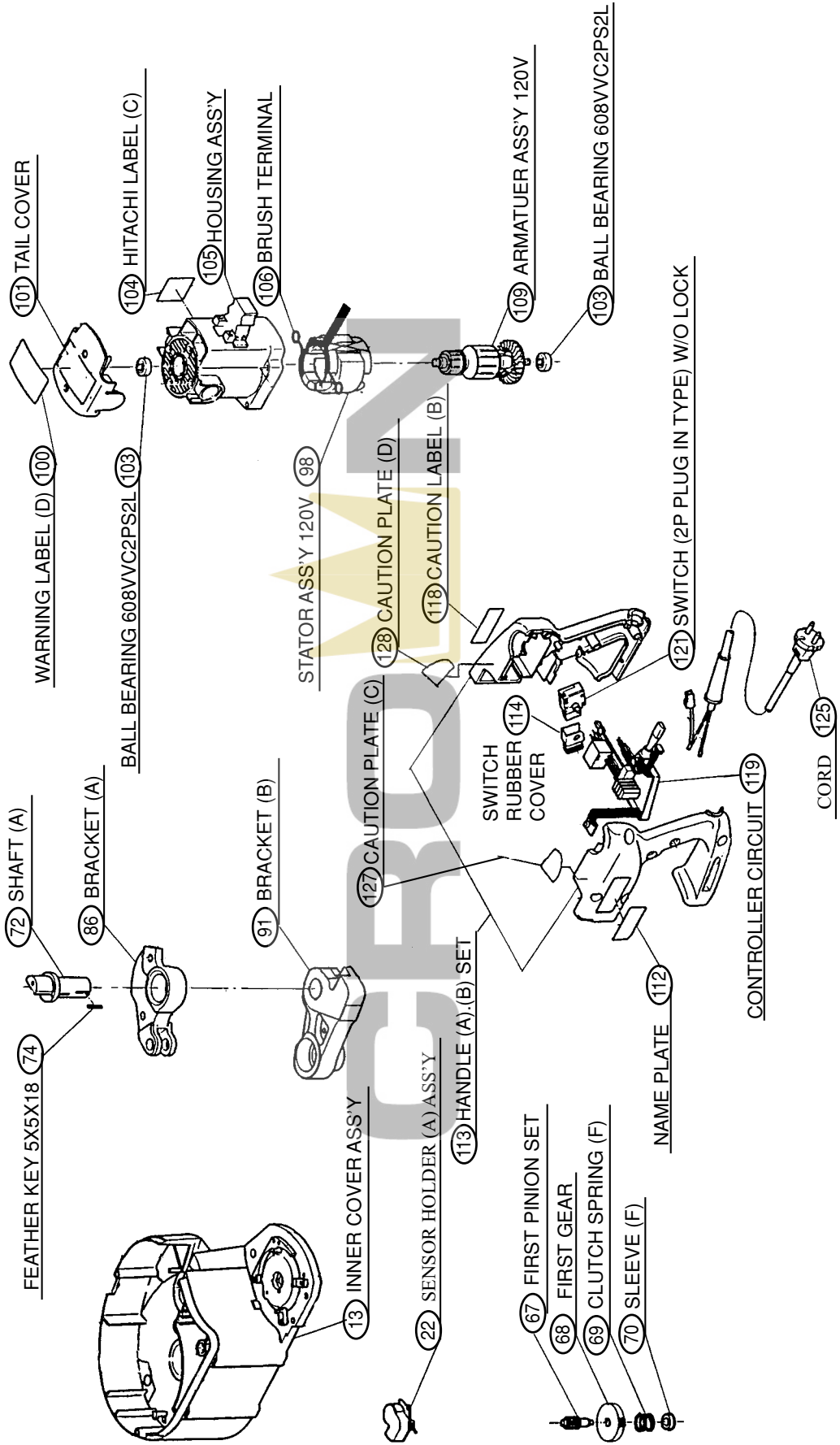
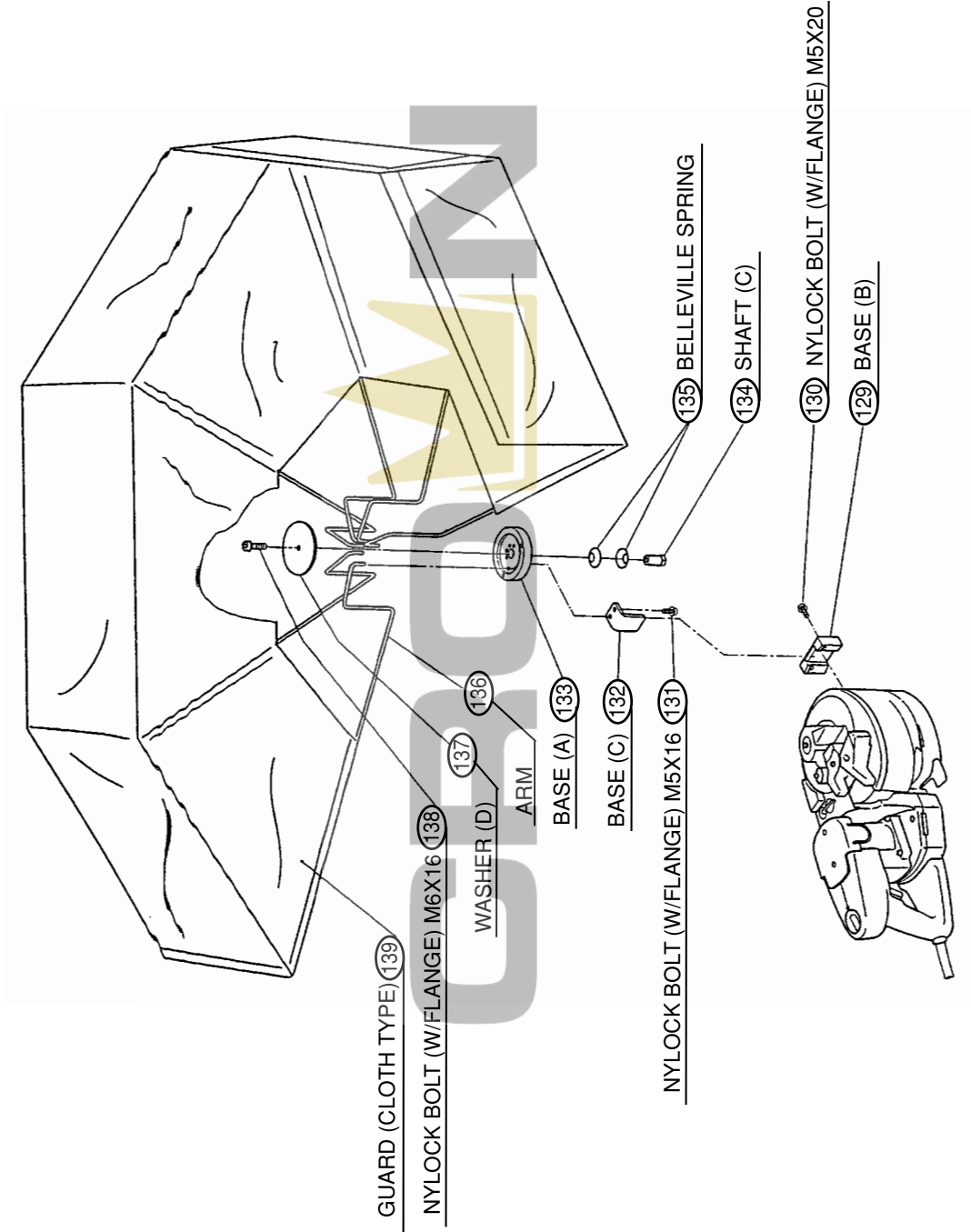


## ELECTRIC TOOL PARTS LIST

PORTABLE REBAR CUTTER/BENDER 2001·9·25  
Model VB 16Y (E1)







**PARTS**

VB 16Y

ITEM NO.	CODE NO.	DESCRIPTION	NO. USED	REMARKS
1	319-692	CENTER PLATE	1	
2	319-691	TURN TABLE	1	
3	320-264	NYLOCK FLAT HD. SCREW M4X12	3	
4	319-690	CAM COVER	1	
5	320-427	PLATE (A)	1	
6	313-082	NYLOCK BOLT (W/FLANGE) M5X16	3	
7	319-696	WASHER	1	
8	319-695	ROLLER (B)	1	
9	944-486	O-RING (1AP-20)	2	
10	319-678	CAM	1	
11	320-420	SLEEVE (B)	1	
12	319-679	CAM SHAFT	1	
13	320-898	INNER COVER ASS'Y	1	INCLUD.19,47,57,66
14	307-607	WRENCH HOLDER	1	
15	316-225	STAND	1	
16	319-676	HEX. SOCKET HD. BOLT (W/FLANGE) M8X25	2	
17	319-681	FINAL GEAR	1	
18	962-553	RETAINING RING FOR D28 SHAFT	1	
19	630-2VV	BALL BEARING 6302VVCMP2L	2	
20		PIN (B)	2	
21	319-660	GEAR COVER ASS'Y	1	INCLUD.19,20,53,65,71
22	320-899	SENSOR HOLDER (A) ASS'Y	1	INCLUD.23,25
23	316-214	TAPPING SCREW D3X12	1	
24	949-215	MACHINE SCREW M4X8 (10 PCS.)	2	
25	316-212	SENSOR GEAR	1	
26	316-212	SENSOR GEAR	1	
27	962-569	WASHER (B)	1	
28	987-203	SEAL LOCK SCREW (W/SP. WASHER) M4X12	1	
29	319-685	O-RING	1	
30	319-686	SENSOR COVER	1	
31	319-704	WARNING LABEL (A)	1	
32	319-680	SHAFT (B)	1	
33	319-699	HEX. BAR WRENCH 4MM (LENGTH 45)	1	
34	319-694	WASHER (A)	1	
35	319-714	CENTER ROLLER (D62) SET	1	INCLUD.6,37,41
36	319-693	NEEDLE BEARING (D22)	1	
37	313-077	NYLOCK BOLT (W/FLANGE) M5X25	1	
38	875-638	O-RING (S-12)	1	
39	320-425	SLEEVE (G)	1	
40	320-426	SPRING (G)	1	
41		GUIDE (D62)	1	
42	301-653	TAPPING SCREW (W/FLANGE) D4X20 (BLACK)	7	
43	319-697	LEVER (B)	1	
44	949-749	ROLL PIN D3X8 (10 PCS.)	1	
45	967-124	FEATHER KEY 7X7X22	2	
46	948-081	FEATHER KEY 7X7X25	2	
47	316-186	SUPPORT (B)	1	
48	319-677	RETURN SPRING	1	
49	320-422	WARNING LABEL (C)	1	
50	319-682	THIRD PINION	1	
51	998-468	FEATHER KEY 7X7X12	1	

**PARTS**

VB 16Y

ITEM NO.	CODE NO.	DESCRIPTION	NO. USED	REMARKS
52	319-683	THIRD GEAR	1	
53	930-076	METAL (B)	1	
54	319-661	GUIDE (B)	1	
55	316-228	HEX. SOCKET HD. BOLT (W/FLANGE) M4X10	2	
56	880-474	NYLOCK BOLT (W/FLANGE) M6X16	7	
57	954-789	METAL (B)	1	
58	320-263	SECOND PINION SET	1	INCLUD.59-64
59		FEATHER KEY 4X4X10	1	
60		CLUTCH PLATE	1	
61		SECOND GEAR	1	
62		SPRING (E)	1	
63		SLEEVE (E)	1	
64		RETAINING RING FOR D14 SHAFT (10 PCS.)	1	
65	600-0VV	BALL BEARING 6000VVCMP2L	1	
66	316-185	METAL	1	
67	320-900	FIRST PINION SET	1	INCLUD.68-70 FOR USA,CAN
68		FIRST GEAR	1	
69		CLUTCH SPRING (F)	1	
70		SLEEVE (F)	1	
71	608-VVM	BALL BEARING 608VVC2PS2L	1	
72	320-901	SHAFT (A)	1	FOR USA,CAN
73	939-540	RETAINING RING FOR D10 SHAFT (10 PCS.)	1	
74	320-902	FEATHER KEY 5X5X18	1	FOR USA,CAN
75	319-664	NEEDLE	1	
76	319-663	ROLLER (C)	1	
77	319-666	SPRING (D)	1	
78	319-667	PIN FOR SPRING	1	
79	319-673	SPACER	1	
80	320-424	BELLEVILLE SPRING (FOR M12)	1	
81	319-674	SEAL LOCK HEX. SOCKET HD. BOLT M12X20	1	
82	319-688	COVER	1	
83	319-687	SPRING (F)	1	
84	872-470	O-RING (S-26)	1	
85	878-181	NYLOCK HEX. SOCKET HD. BOLT M5X16	2	FOR USA,CAN
86	320-903	BRACKET (A)	1	
87	980-258	NEEDLE (C)	2	
88	319-706	CUTTER SET (1PAIR)	2	
89	319-665	CUTTER GUARD	1	
90	319-669	V-RING	1	
91	320-904	BRACKET (B)	1	FOR USA,CAN
92	319-689	DUST GUARD	1	
93	938-477	HEX. SOCKET SET SCREW M5X8	2	
94	935-829	BRUSH CAP	2	
95	999-043	CARBON BRUSH (1 PAIR)	2	
96	971-001	BRUSH HOLDER	2	
97	313-585	HEX. SOCKET HD. BOLT (W/FLANGE) M5X30	4	
98	340-500D	STATOR ASS'Y 120V	1	INCLUD.106
99	980-931	FAN GUIDE	1	
100		WARNING LABEL (D)	1	FOR USA,CAN
101	316-227	TAIL COVER	1	
102	310-111	BEARING BUSHING (B)	1	

**PARTS**

VB 16Y

ITEM NO.	CODE NO.	DESCRIPTION	NO. USED	REMARKS
103	608-VVM	BALL BEARING 608VVC2PS2L	2	FOR USA,CAN
104		HITACHI LABEL (C)	1	FOR USA,CAN
105	310-146	HOUSING ASS'Y	1	INCLUD.93,96
106	930-703	BRUSH TERMINAL	1	
108	953-121	HEX. HD. TAPPING SCREW D5X50	2	
109	360-552U	ARMATURE ASS'Y 120V	1	INCLUD.103
110	931-701	BEARING LOCK	1	
111	302-089	TAPPING SCREW (W/FLANGE) D5X20 (BLACK)	2	
112		NAME PLATE	1	
113	319-705	HANDLE (A),(B) SET	1	
114	319-354	SWITCH RUBBER COVER	1	FOR USA,CAN
115	959-140	CONNECTOR 50091 (10 PCS.)	4	FOR USA,CAN
116	878-609	O-RING (S-24)	1	
117	319-718	VOLUME HOLDER	1	
118		CAUTION LABEL (B)	1	
119	319-703	CONTROLLER CIRCUIT	1	FOR USA,CAN
121	320-905	SWITCH (2P PLUG IN TYPE) W/O LOCK	1	FOR USA,CAN
122	316-229	MACHINE SCREW (W/WASHERS) M5X20 (BLACK)	2	
123	984-750	TAPPING SCREW (W/FLANGE) D4X16	2	
124	937-631	CORD CLIP	1	
* 125	320-906	CORD	1	FOR USA,CAN
126	998-471	HEX. SOCKET HD. BOLT M5X12	2	
127		CAUTION PLATE (C)	1	FOR USA, CAN
128		CAUTION PLATE (D)	1	FOR USA, CAN
129	320-907	BASE (B)	1	FOR USA, CAN
130	320-908	NYLOCK BOLT (W/FLANGE) M5X20	2	FOR USA, CAN
131	313-082	NYLOCK BOLT (W/FLANGE) M5X16	2	FOR USA, CAN
132	320-909	BASE (C)	1	FOR USA, CAN
133	320-910	BASE (A)	1	FOR USA, CAN
134	320-911	SHAFT (C)	1	FOR USA, CAN
135	980-877	BELLEVILLE SPRING	2	FOR USA, CAN
136	320-912	ARM	6	FOR USA, CAN
137	320-913	WASHER (D)	1	FOR USA, CAN
138	880-474	NYLOCK BOLT (W/FLANGE) M6X16	1	FOR USA, CAN
139	320-914	GUARD (CLOTH TYPE)	1	FOR USA, CAN

**OPTIONAL ACCESSORIES**

ITEM NO.	CODE NO.	DESCRIPTION	NO. USED	REMARKS
601	314-837	CASE	1	
602	319-712	CENTER ROLLER (D38) SET	1	
603	319-713	CENTER ROLLER (D50) SET	1	