

# MODEL WB1650

THIS TOOL EQUIPPED WITH  
A RESTRICTIVE TRIGGER

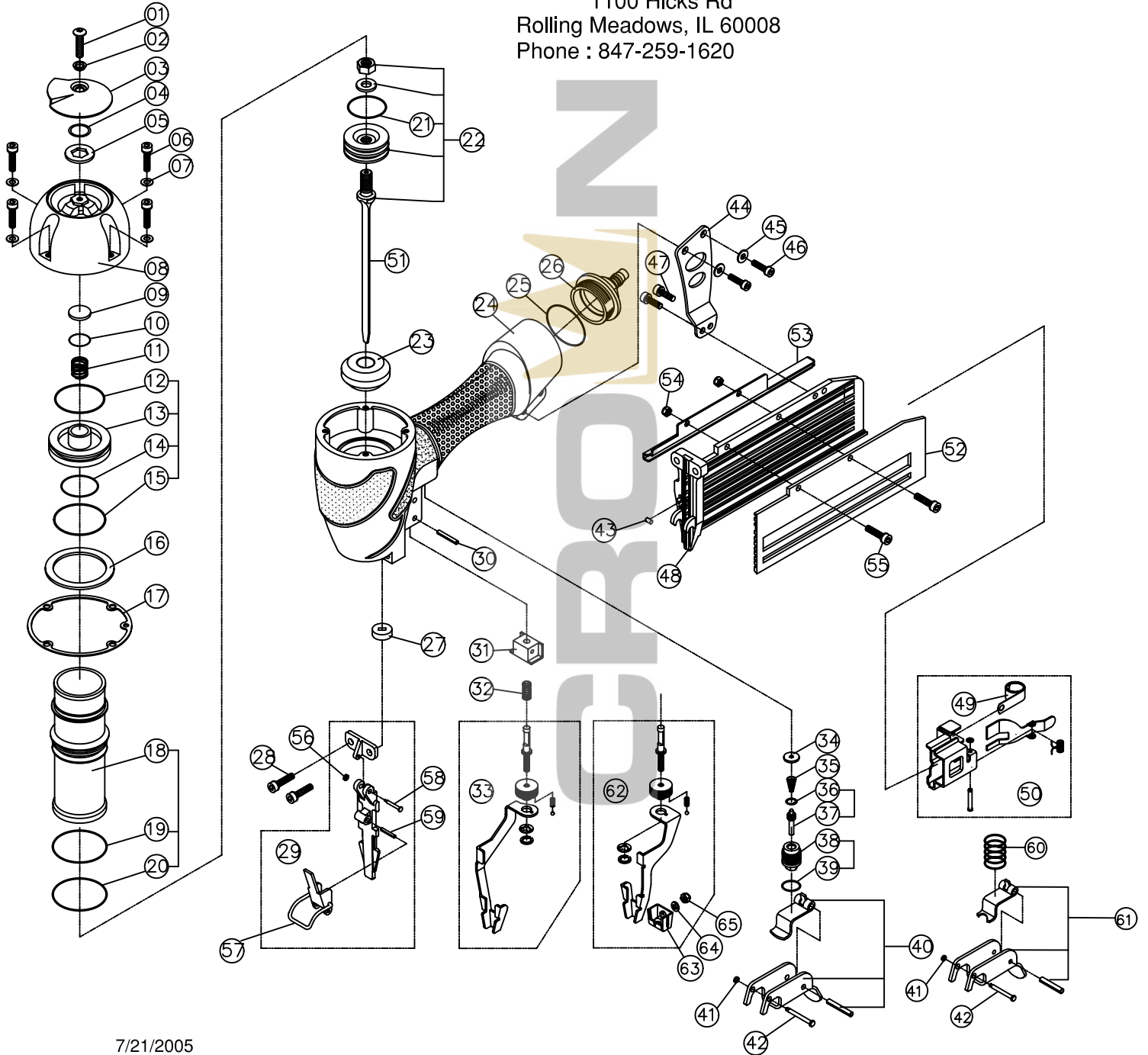
# SPOTNAILS®

DIVISION OF PEACE INDUSTRIES, LTD.

1100 Hicks Rd

Rolling Meadows, IL 60008

Phone : 847-259-1620



7/21/2005

## SPOTNAILS MODEL WB1650

Ref. No.	Part No.	Description	Ref. No.	Part No.	Description
1	P-24370	Screw	34	P-15194	Valve Seal
2	P-96118	Bushing	35	P-18283	Spring
3	P-70042	Exhaust Deflector	36	P-64390	O-Ring
4	P-64377	O-Ring	37	P-22165	Plunger
5	P-32217	Washer	38	P-22166	Valve Housing
6	P-24300	Cap Screw	39	P-64391	O-Ring
7	P-32211	Flat Washer	40	AS-21008	Trigger Assembly
8	P-60174	Cap	41	P-64240	O-Ring
◆ 9	P-15193	Exhaust Seal	42	P-07327	Trigger Pin
◆ 10	P-64384	O-Ring	43	P-07329	Retainer Pin
◆ 11	P-18331	Poppet Spring	44	P-13068	Bracket
◆ 12	P-64385	Poppet O-Ring	45	P-32144	Washer
◆ 13	P-63038	Poppet	46	P-24306	Screw
◆ 14	P-64233	Piston Stop O-Ring	47	P-24313	Screw
◆ 15	P-64386	Cylinder Seal O-Ring	48	AS-12157	Magazine Assembly
◆ 16	P-03070	Guide Spacer	49	P-18234	Negator Spring
◆ 17	P-62071	Gasket	50	AS-09039	Pusher Assembly
◆ 18	P-05097	Cylinder	51	P-06227	Driver
◆ 19	P-64387	Cylinder Seal O-Ring	52	P-12422	Magazine Cover
◆ 20	P-64242	O-Ring	53	P-12423	Feeder Cover
◆ 21	P-64388	Piston O-Ring	54	P-26126	Nut
◆ 22	AS-06036	Piston & Driver Assembly	55	P-24312	Screw
◆ 23	P-15195	Bumper	56	P-64434	O-Ring
◆ 24	P-01261	Body	57	AS-04035	Latch Assembly
◆ 25	P-64389	O-Ring	58	P-07356	Step Pin
◆ 26	P-60175	End Cap	59	P-07352	Roll Pin
◆ 27	P-15196	Return Seal	60	P-18267	Spring
◆ 28	P-24358	Screw	61	AS-21019	Restrictive Trigger
◆ 29	AS-10044	Front Plate Assembly	62	AS-53066	No Mar Tip Assembly
◆ 30	P-07291	Pin	63	P-96129	No Mar Tip
◆ 31	P-53165	Safety Guide	64	P-32227	Washer
◆ 32	P-18328	Spring	65	P-26165	Nut
◆ 33	AS-53043	Safety			

◆ Parts Included in AS-97281 O-Ring and Seal Kit