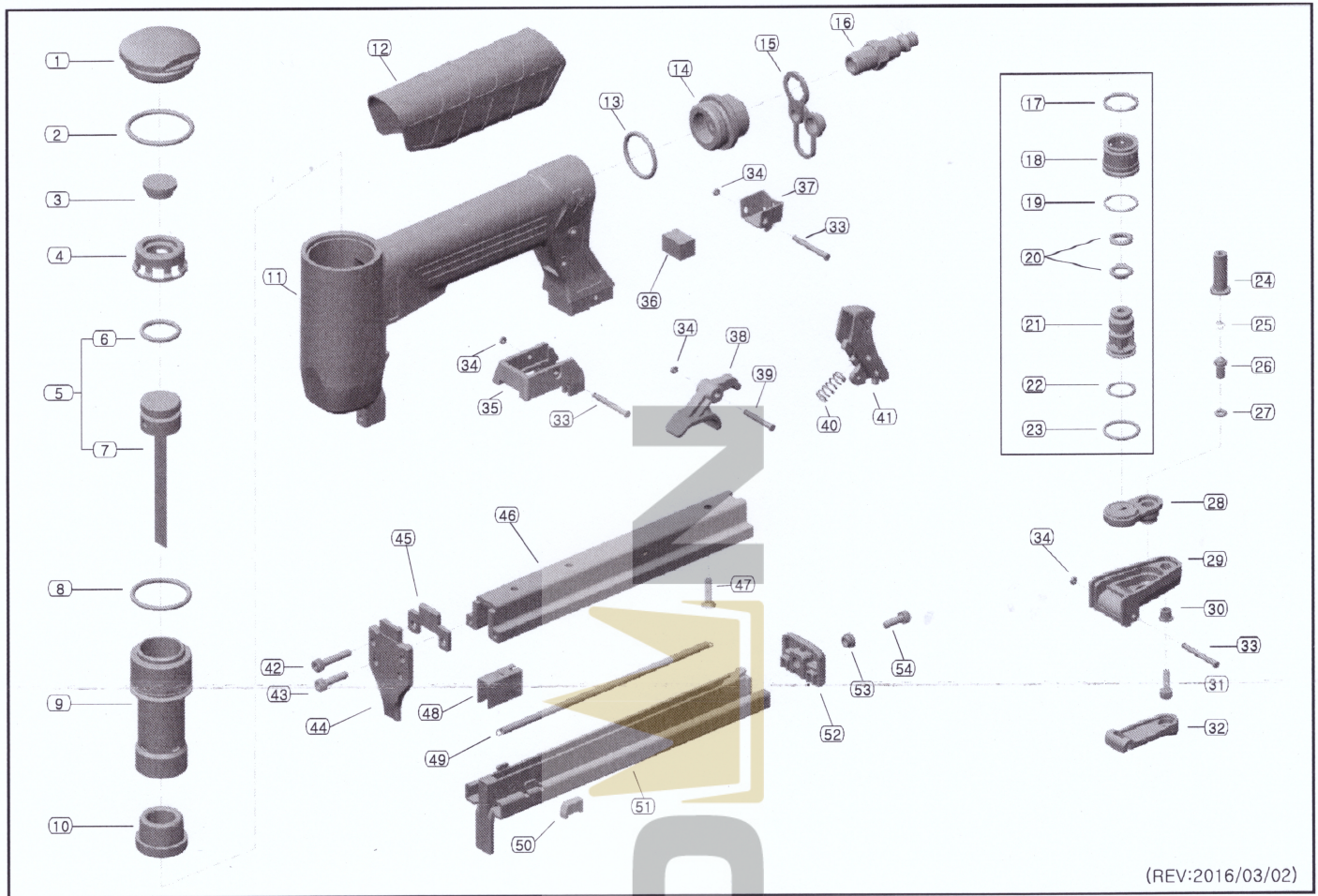


## EXPLODED DIAGRAM OF S71/16-22 (New)



(REV:2016/03/02)

### S71/16-22 New (22GA. 3/8" CROWN STAPLER)

NO.	DESCRIPTION	PART NO.	QTY	NO.	DESCRIPTION	PART NO.	QTY
1	CAP	S71/16-C-001	1	28	VALVE CAP	S80/16-V-010	1
2	CAP O-RING	S80/16-C-003	1	29	TRIGGER HOUSING	S80/16-T-003	1
3	PISTON STOPPER	S80/16-A-006	1	30	BUSHING	CT64-L-007	1
4	COLLAR	S80/16-A-004	1	31	BOLT (M4x12L)	ZN-04-012	1
5	PISTON SET	S71/16-P-P201	1	32	TRIGGER	S80/16-T-001	1
6	PISTON O-RING	S80/16-P-003	1	33	CLICK LEVER PIN	S80/16-L-006	3
7	PISTON ASSEMBLY	S71/16-P-P202	1	34	PIN STOPPER O-RING	CT64-M-008	4
8	CYLINDER O-RING	S80/16-A-005	1	35	MAGAZINE STOPPER	S80/16-M-012	1
9	CYLINDER	S71/16-A-001	1	36	EXHAUST FILTER	S80/16-B-010	1
10	BUMPER	S80/16-A-003	1	37	EXHAUST COVER	S80/16-B-009	1
11	BODY	S80/16-B-001	1	38	CLICK LEVER B	S80/16-L-005	1
12	GRIP	S80/16-B-004	1	39	CLICK LEVER B PIN	S80/16-L-007	1
13	END CAP O-RING	S80/16-B-003	1	40	CLICK LEVER SPRING	S80/16-L-004	1
14	END CAP	S80/16-B-002	1	41	CLICK LEVER A SET	S80/16-L-P001	1
15	PLUG CAP	9032-B-006	1	42	BOLT (M4x20L)	ZN-04-020	2
16	AIR PLUG	9032-B-005	1	43	BOLT (M4x16L)	ZN-04-016	2
17	VALVE O-RING (UP)	S80/16-V-004	1	44	DRIVER GUIDE	S71/16-G-101	1
18	VALVE	S80/16-V-005	1	45	SPACER	S80/16-G-002	1
19	VALVE O-RING (LOW)	S80/16-V-006	1	46	MAGAZINE A	S71/16-M-001	1
20	VALVE PLUNGER O-RING (UP)	S80/16-V-001	2	47	D/H BOLT (M4x16L)	ZDN-04-016	1
21	VALVE PLUNGER	S80/16-V-002	1	48	PUSHER	S71/16-M-003	1
22	VALVE PLUNGER O-RING (LOW)	S80/16-V-003	1	49	PUSHER SPRING	S80/16-M-004	1
23	VALVE CAP O-RING	S80/16-V-011	1	50	RETAINER	S80/16-M-011	2
24	INTERMEDIATE VALVE	S80/16-V-007	1	51	MAGAZINE B PART ASSEMBLY	S71/16-M-P102	1
25	PLUNGER SPRING	S80/16-V-012	1	52	MAGAZINE END CAP	S80/16-L-001	1
26	PLUNGER	S80/16-V-008	1	53	BUSHING	F30-L-007	1
27	PLUNGER O-RING	S80/16-V-009	1	54	BOLT (M4x10L)	ZN-04-010	1

\*\* All the parts of stapler can be changed for improvement and re-design without announcement.

(REV. : 2016/03/02)

## S71/16-22 (22GA. 3/8" CROWN STAPLER)

NO.	DESCRIPTION	PART NO.	QTY	달러	한화	값	NO.	DESCRIPTION	PART NO.	QTY	달러	한화	값
1	CAP	S80/16-C-001	1	2.11	2107	1741	28	VALVE CAP	S80/16-V-010	1	0.12	122.2	101
2	CAP O-RING	S80/16-C-003	1	0.04	42.35	35	29	TRIGGER HOUSING	S80/16-T-003	1	0.19	192.4	159
3	PISTON STOPPER	S80/16-A-006	1	0.12	124.6	103	30	BUSHING	CT64-L-007	1	0.06	64.13	53
4	COLLAR	S80/16-A-004	1	0.11	106.5	88	31	BOLT (M4x12L)	ZN-04-012	1	0.04	43.56	36
5	PISTON SET	S71/16-P-P001	1	2.82	2816		32	TRIGGER	S80/16-T-001	1	0.07	67.76	56
6	PISTON O-RING	S80/16-P-003	1	0.02	24.2	20	33	CLICK LEVER PIN	S80/16-L-006	3	0.42	415	343
7	PISTON ASSEMBLY	S71/16-P-P002	1	2.79	2791	2307	34	PIN STOPPER O-RING	CT64-M-008	4	0.08	75.02	62
8	CYLINDER O-RING	S80/16-A-005	1	0.04	35.09	29	35	MAGAZINE STOPPER	S80/16-M-012	1	0.14	136.7	113
9	CYLINDER	S80/16-A-001	1	1.11	1114	921	36	EXHAUST FILTER	S80/16-B-010	1	0.02	16.94	14
10	BUMPER	S80/16-A-003	1	0.4	399.3	330	37	EXHAUST COVER	S80/16-B-009	1	0.23	226.3	187
11	BODY	S80/16-B-001	1	7.96	7961	6579	38	CLICK LEVER B	S80/16-L-005	1	0.12	124.6	103
12	GRIP	S80/16-B-004	1	0.22	223.9	185	39	CLICK LEVER B PIN	S80/16-L-007	1	0.11	112.5	93
13	END CAP O-RING	S80/16-B-003	1	0.03	31.46	26	40	CLICK LEVER SPRING	S80/16-L-004	1	0.05	47.19	39
14	END CAP	S80/16-B-002	1	0.59	589.3	487	41	CLICK LEVER A SET	S80/16-L-P001	1	0.31	313.4	259
15	PLUG CAP	9032-B-006	1	0.02	18.15	15	42	BOLT (M4x20L)	ZN-04-020	2	0.1	96.8	80
16	AIR PLUG	9032-B-005	1	0.26	262.6	217	43	BOLT (M4x16L)	ZN-04-016	2	0.1	96.8	80
17	VALVE O-RING (UP)	S80/16-V-004	1	0.02	22.99	19	44	DRIVER GUIDE	S71/16-G-001	1	2.61	2606	2154
18	VALVE	S80/16-V-005	1	1.06	1060	876	45	SPACER	S80/16-G-002	1	0.16	160.9	133
19	VALVE O-RING (LOW)	S80/16-V-006	1	0.02	22.99	19	46	MAGAZINE A	S71/16-M-001	1	2.95	2955	2442
20	VALVE PLUNGER O-RING (UP)	S80/16-V-001	2	0.03	32.67	27	47	D/H BOLT (M4x16L)	ZDN-04-016	1	0.05	53.24	44
21	VALVE PLUNGER	S80/16-V-002	1	0.08	84.7	70	48	PUSHER	S71/16-M-003	1	0.22	215.4	178
22	VALVE PLUNGER O-RING (LOW)	S80/16-V-003	1	0.02	18.15	15	49	PUSHER SPRING	S80/16-M-004	1	0.23	227.5	188
23	VALVE CAP O-RING	S80/16-V-011	1	0.02	22.99	19	50	RETAINER	S80/16-M-011	2	0.06	62.92	52
24	INTERMEDIATE VALVE	S80/16-V-007	1	0.07	68.97	57	51	MAGAZINE B PART ASSEMBLY	S71/16-M-P002	1	5.96	5962	4927
25	PLUNGER SPRING	S80/16-V-012	1	0.03	30.25	25	52	MAGAZINE END CAP	S80/16-L-001	1	0.11	112.5	93
26	PLUNGER	S80/16-V-008	1	0.02	18.15	15	53	BUSHING	F30-L-007	1	0.05	47.19	39
27	PLUNGER O-RING	S80/16-V-009	1	0.01	9.68	8	54	BOLT (M4x10L)	ZN-04-010	1	0.04	43.56	36

\*\* All the parts of stapler can be changed for improvement and re-design without announcement.

(REV. : 2014/01/09)