

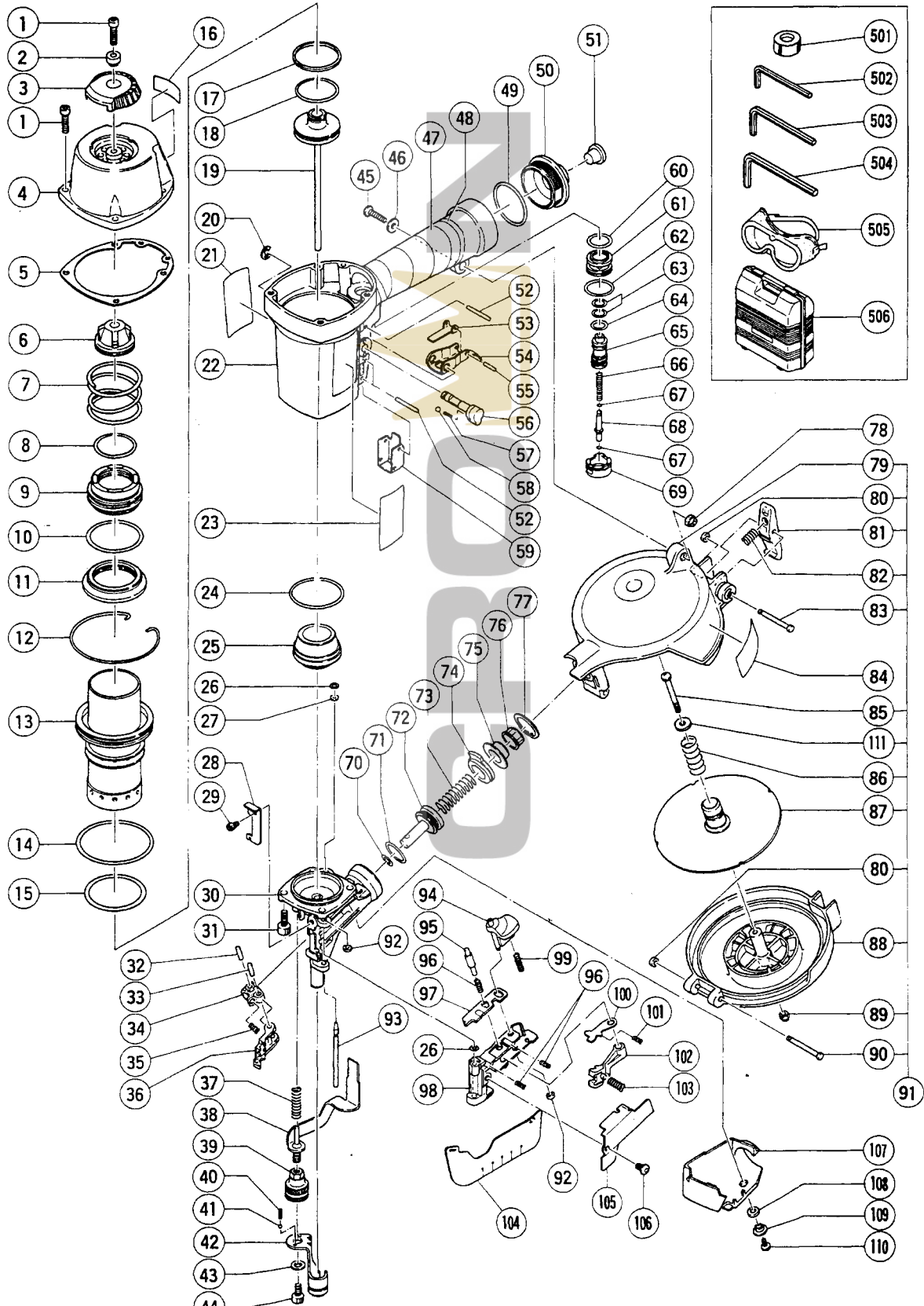
HITACHI

LIST NO. 1077

PNEUMATIC TOOL PARTS LIST

■ COIL NAILER
Model NV 50AE

1993 • 9 • 30
(E1)



PARTS

NV 50AE

ITEM NO.	CODE NO.	DESCRIPTION	NO. USED	REMARKS
1	949-757	HEX. SOCKET HD. BOLT M5X20 (10 PCS.)	5	
2	880-380	SLEEVE	1	
3	880-359	TOP COVER	1	
4	880-353	EXHAUST COVER	1	
5	880-358	GASKET	1	
6	880-357	EXHAUST VALVE RUBBER	1	
7	880-356	HEAD VALVE SPRING	1	
8	980-879	O - RING (S - 34)	1	
9	880-354	HEAD VALVE	1	
10	878-714	CYLINDER O - RING (C) I.D 44.7	1	
11	880-355	HEAD VALVE RUBBER	1	
12	880-352	RETAINING RING	1	
13	880-351	CYLINDER	1	
14	877-312	CYLINDER O - RING (I.D 63.1)	1	
15	878-716	O - RING (P - 48)	1	
16	878-499	CAUTION PLATE	1	
17	880-312	PISTON RING	1	
18	880-311	O - RING (I.D 34.2)	1	
19	880-384	PISTON (H)	1	
20	955-479	RETAINING RING (E - TYPE) FOR D8 SHAFT	1	
21		NAME PLATE	1	
22	880-348	BODY ASSY	1	INCLUD.47,48
23		MODEL LABEL	1	
24	880-382	O - RING (S - 44)	1	
25	880-313	PISTON BUMPER	1	
26	874-436	O - RING (P - 4)	2	
27	878-279	WASHER	1	
28	880-388	CUTTER	1	
29	880-030	SEAL LOCK HEX. SOCKET HD. BOLT M4X6	1	
30	880-314	NOSE	1	
31	880-369	SEAL LOCK HEX. SOCKET HD. BOLT M6X18	4	
32	949-770	ROLL PIN D4X14 (10 PCS.)	1	
33	983-545	NEEDLE ROLLER	1	
34	878-132	FEEDER ARM	1	
35	878-340	FEEDER SPRING	1	
36	880-328	FEEDER	1	
37	880-380	PUSHING LEVER SPRING	1	
38	880-332	PUSHING LEVER (B)	1	
39	880-383	ADJUSTER (B)	1	
40	880-175	ADJUSTER SPRING	2	
41	959-148	STEEL BALL D3.175 (10 PCS.)	2	
42	880-333	PUSHING LEVER (A)	1	
43	880-081	WASHER	1	
44	949-657	HEX. SOCKET HD. BOLT M6X12 (10 PCS.)	1	
45	302-196	MACHINE SCREW M5X20 (BLACK)	1	
46	878-205	WASHER	1	
47	880-349	GRIP TAPE	1	
48	880-407	TAPE	2	
49	880-183	O - RING (I.D 37.2)	1	
50	880-379	CAP	1	
51	872-035	DUST CAP	1	

*: ALTERNATIVE PARTS

PARTS

NV 50AE

ITEM NO.	CODE NO.	DESCRIPTION	NO. USED	REMARKS
52	949-885	ROLL PIN D3X28 (10 PCS.)	3	
53	878-928	TRIGGER ARM	1	
54	878-927	TRIGGER	1	
55	878-985	ROLL PIN D2.5X16	1	
56	878-929	CHANGE KNOB	1	
57	982-454	SPRING (C)	1	
58	959-155	STEEL BALL D3.97 (10 PCS.)	1	
59	880-381	PUSHING LEVER GUIDE	1	
60	877-899	HEAD VALVE O - RING (I.D 16.8)	1	
61	878-881	VALVE BUSHING (B)	1	
62	878-885	O - RING (S - 18)	1	
63	878-925	O - RING (I.D 8.8)	2	
64	878-887	O - RING (I.D 11)	1	
65	878-922	VALVE PISTON	1	
66	878-884	PLUNGER SPRING	1	
67	878-888	O - RING (I.D 1.8)	2	
68	878-923	PLUNGER	1	
69	878-880	VALVE BUSHING (A)	1	
70	872-645	O - RING (P - 9)	1	
71	880-330	O - RING (P - 21)	1	
72	880-329	FEED PISTON	1	
73	878-603	FEED SPRING	1	
74	880-387	BUMPER	1	
75	880-331	FEED PISTON COVER	1	
76	878-305	MAGAZINE BUSHING	1	
77	939-555	RETAINING RING FOR D28 HOLE (10 PCS.)	1	
78	877-371	NYLON NUT M5	1	
79	880-335	MAGAZINE	1	
80	877-826	FEEDER SHAFT RING	2	
81	880-336	MAGAZINE STOPPER	1	
82	880-337	STOPPER SPRING	1	
83	880-338	PIN D4X35.5	1	
84	880-382	LABEL (B)	1	
85	949-228	MACHINE SCREW M4X40 (10 PCS.)	1	
86	877-894	HOLDER SPRING	1	
87	878-350	NAIL HOLDER	1	
88	880-339	MAGAZINE COVER	1	
89	876-465	NYLON NUT M4	1	
90	880-341	PIN D4X40	1	
91	880-334	MAGAZINE ASS'Y	1	INCLUD.79 - 83,85 - 90,111
92	880-319	SHAFT RING	2	
93	880-328	NAIL GUIDE SHAFT	1	
94	880-318	GUIDE LOCK	1	
95	880-320	GUIDE SHAFT	1	
96	880-321	PUSHING SPRING	3	
97	880-322	GUIDE	1	
98	880-315	NAIL GUIDE	1	
99	880-446	SPRING	1	
100	880-316	NAIL STOPPER (A)	1	
101	878-106	FEEDER SPRING	1	
102	880-317	NAIL STOPPER (B)	1	

*: ALTERNATIVE PARTS

PARTS

NV 50AE

ITEM NO.	CODE NO.	DESCRIPTION	NO. USED	REMARKS
103	878-362	STOPPER SPRING (B)	1	
104	880-325	COVER	1	
105	880-323	NAIL GUIDE COVER	1	
106	880-324	HEX. SOCKET BUTTON BOLT M5X10	1	
107	880-345	GUARD	1	
108	880-347	GUARD BUMPER	1	
109	880-346	SLEEVE (B)	1	
110	949-216	MACHINE SCREW M4X10 (10 PCS.)	1	
111	875-248	WASHER	1	

STANDARD ACCESSORIES

ITEM NO.	CODE NO.	DESCRIPTION	NO. USED	REMARKS
501	880-107	NOSE CAP	1	
502	943-277	HEX. BAR WRENCH 3MM	1	
503	944-458	HEX. BAR WRENCH 4MM	1	
504	944-459	HEX. BAR WRENCH 5MM	1	
505	875-769	PROTECTIVE GOGGLES	1	
506	880-365	CASE	1	

* : ALTERNATIVE PARTS