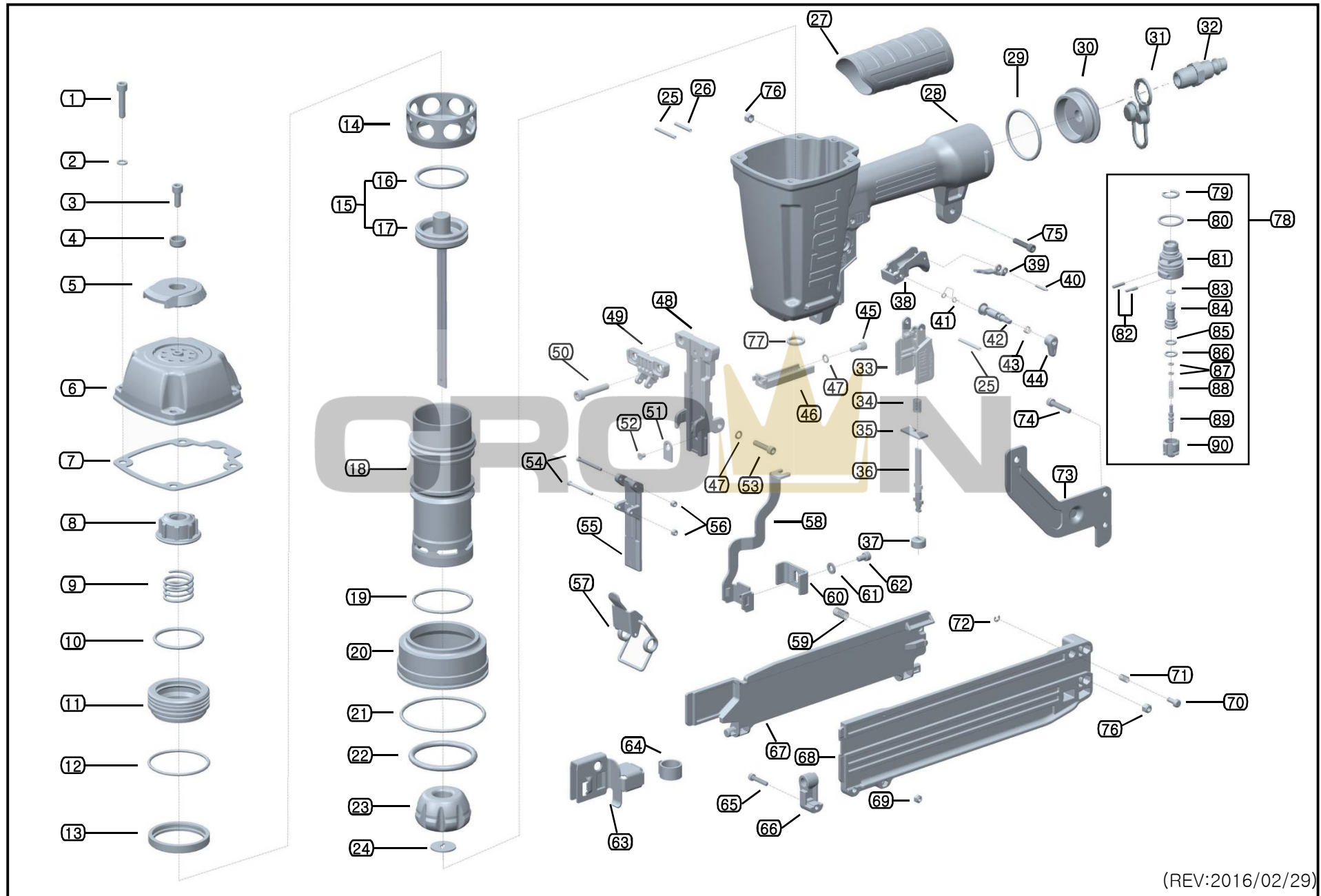


EXPLODED DIAGRAM OF JQS65



JQS65(15GA. 7/16" CROWN STAPLER)

| NO. | DESCRIPTION | PART NO. | QTY | NO. | DESCRIPTION | PART NO. | QTY | NO. | DESCRIPTION | PART NO. | QTY |
|-----|-------------------------|---------------|-----|-----|--------------------------|--------------|-----|-----|----------------------------|--------------|-----|
| 1 | BOLT (M6x28L) | Z-06-280 | 4 | 31 | PLUG CAP | 9032-B-006 | 1 | 61 | RING PLATE | JN65S-M-017 | 1 |
| 2 | SPRING WASHER (for M6) | W-06 | 4 | 32 | AIR PLUG | 9032-B-005 | 1 | 62 | BOLT (M5x8L) | ZN-05-080 | 1 |
| 3 | BOLT (M6x15L) | ZN-06-150 | 1 | 33 | CONNECTOR HOUSING | CT64-S-103 | 1 | 63 | PUSHER | JNS45-M-004 | 1 |
| 4 | EXHAUST COVER WASHER | CT64-C-007 | 1 | 34 | CONNECTOR SPRING | CT64-S-004 | 1 | 64 | PUSHER SPRING | JNS45L-M-008 | 1 |
| 5 | EXHAUST COVER | CT64-C-003 | 1 | 35 | CONNECTOR HOLDER | CT64-S-005 | 1 | 65 | BOLT (M4x20L) | Z-04-200 | 1 |
| 6 | CAP | JQS65-C-001 | 1 | 36 | CONNECTOR | CT64-S-002 | 1 | 66 | MAGAZINE HINGE | JNS45-M-003 | 1 |
| 7 | GASKET | CT64R3-C-102 | 1 | 37 | RETAINER | CT64-S-006 | 1 | 67 | MAGAZINE COVER | JQS65-M-002 | 1 |
| 8 | PISTON STOPPER | CT64-H-005 | 1 | 38 | TRIGGER A (OUT) | CT64-T-001 | 1 | 68 | MAGAZINE BODY | JQS65-M-001 | 1 |
| 9 | HEAD VALVE SPRING | CT64-H-006 | 1 | 39 | TRIGGER B (IN) | ST64-T-002 | 1 | 69 | LOCK NUT (for M4) | NN-04 | 1 |
| 10 | HEAD VALVE O-RING (IN) | CT64-H-003 | 1 | 40 | ROLL PIN (Φ2.5x16L) | R-25-160 | 1 | 70 | PUSHER STOPPER | JNS45-M-006 | 1 |
| 11 | HEAD VALVE | CT64-H-001 | 1 | 41 | TRIGGER SPRING | CT64-T-008 | 1 | 71 | STOPPER SPRING | JNS45-M-009 | 1 |
| 12 | HEAD VALVE O-RING (OUT) | CT64-H-004 | 1 | 42 | FINGER TIP SWITCH BAR | ST64-T-003 | 1 | 72 | E-RING (Φ3) | E-030 | 1 |
| 13 | HEAD VALVE SEAL | CT64-H-002 | 1 | 43 | FINGER TIP SWITCH SPRING | CT64-T-005 | 1 | 73 | BRACKET | JQS65-M-006 | 1 |
| 14 | COLLAR | CT64-A-004 | 1 | 44 | FINGER TIP SWITCH CAP | CT64-T-004 | 1 | 74 | BOLT (M5x25L) | Z-05-250 | 2 |
| 15 | PISTON SET | JQS65-P-P001 | 1 | 45 | BOLT (M5x12L) | ZN-05-120 | 1 | 75 | BOLT (M5x20L) | Z-05-200 | 1 |
| 16 | PISTON O-RING | JQS65-P-003 | 1 | 46 | STAPLE GUIDE | JQS65-G-008 | 1 | 76 | LOCK NUT (for M5) | NN-05 | 3 |
| 17 | PISTON ASSEMBLY | JQS65-P-P002 | 1 | 47 | SPRING WASHER (for M5) | W-05 | 2 | 77 | NOZZLE | JQS65-B-007 | 1 |
| 18 | CYLINDER | JQS65-A-001 | 1 | 48 | DRIVER GUIDE | JQS65-G-001 | 1 | 78 | VALVE SET | NV-V-P001 | 1 |
| 19 | CYLINDER O-RING | CT64-A-005 | 1 | 49 | GUIDE COVER A | JQS65-G-002 | 1 | 79 | VALVE O-RING | NV-V-001 | 1 |
| 20 | CYLINDER GUIDE | JQS65-A-002 | 1 | 50 | BOLT (M6x32L) | ZN-06-320 | 2 | 80 | PLUNGER CAP O-RING | CT64-V-011 | 1 |
| 21 | CYLINDER GUIDE O-RING | CT64-A-006 | 1 | 51 | DRIVER GUIDE TIP | JQS65-G-009 | 1 | 81 | VALVE | NV-V-003 | 1 |
| 22 | SUPPLY HOLE SEAL | S950/16-A-007 | 1 | 52 | D/H BOLT | JQS65-G-010 | 1 | 82 | VALVE PIN (Φ3x14.2L) | NV-V-013 | 2 |
| 23 | BUMPER | CT64-A-003 | 1 | 53 | BOLT (M5x22L) | ZN-05-220 | 1 | 83 | VALVE PLUNGER O-RING (UP) | NV-V-004 | 1 |
| 24 | DRIVER GUIDE PLATE | JQS65-A-008 | 1 | 54 | GUIDE COVER BOLT | JPS38R-G-015 | 2 | 84 | VALVE PLUNGER | NV-V-007 | 1 |
| 25 | ROLL PIN (Φ3x28L) | R-30-280 | 2 | 55 | GUIDE COVER B | JQS65-G-003 | 1 | 85 | VALVE PLUNGER O-RING (MID) | CT64-V-005 | 1 |
| 26 | ROLL PIN (Φ3x22L) | R-30-220 | 1 | 56 | LOCK NUT (for M3) | NN-03 | 2 | 86 | VALVE PLUNGER O-RING (LOW) | NV-V-006 | 1 |
| 27 | GRIP | CT64R3-B-004 | 1 | 57 | LATCH SET | JQS65-G-P001 | 1 | 87 | PLUNGER O-RING | CT64-V-008 | 2 |
| 28 | BODY | JQS65-B-001 | 1 | 58 | CONTACT ARM | JQS65-S-001 | 1 | 88 | PLUNGER SPRING | CT64-V-009 | 1 |
| 29 | END CAP O-RING | JNS45-B-003 | 1 | 59 | MAGAZINE SPRING | JNS45-M-008 | 1 | 89 | PLUNGER | NV-V-010 | 1 |
| 30 | END CAP | JNS45-B-002 | 1 | 60 | CONTACT FOOT | JQS65-S-002 | 1 | 90 | PLUNGER CAP | NV-V-012 | 1 |

** All the parts of nailer can be changed for improvement and re-design without announcement.

(REV. : 2016/02/29)