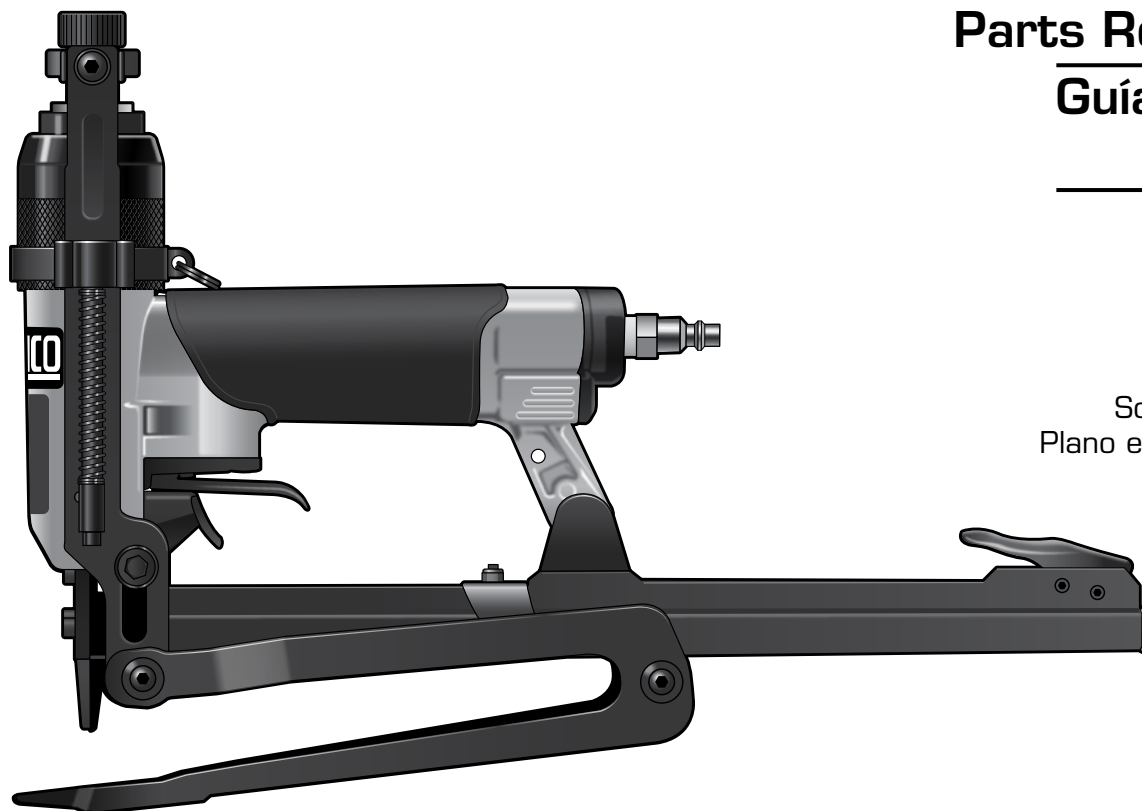


20 Ga. 1/2" Crown Clinching Stapler



Parts Reference Guide Guía de referencia de piezas Pièces Guide de référence

Schematic Drawings Inside
Plano esquemático en el interior
Schéma intérieur

SENCO®

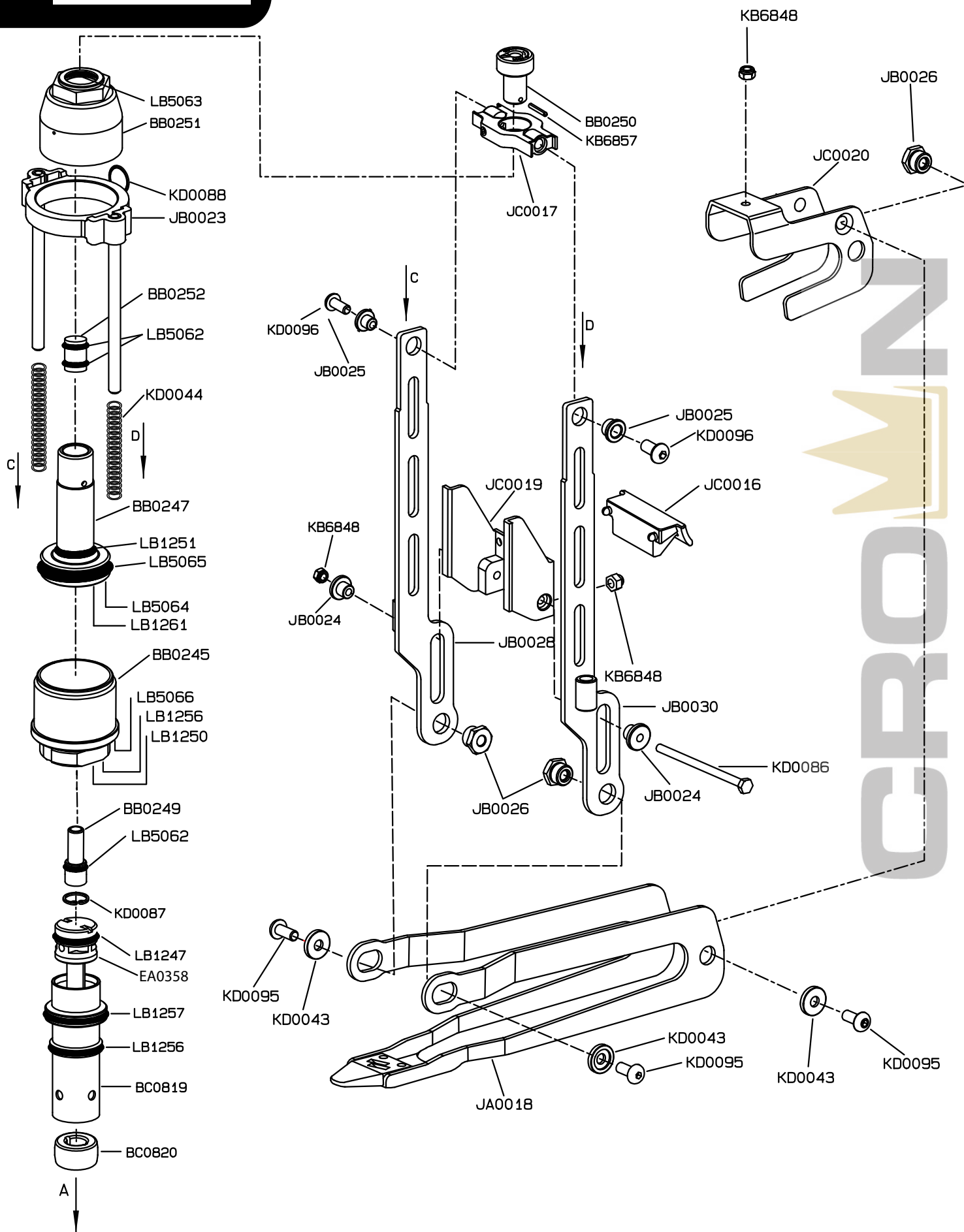
Senco Brands, Inc.
4270 Ivy Pointe Blvd.
Cincinnati, OH 45245
1-800-543-4596
www.senco.com

NFG08H • Revised March 26, 2014

Questions? Comments? call SENCO's toll-free Action-Line: 1-800-543-4596
(North and South America Only) or email: toolprof@senco.com

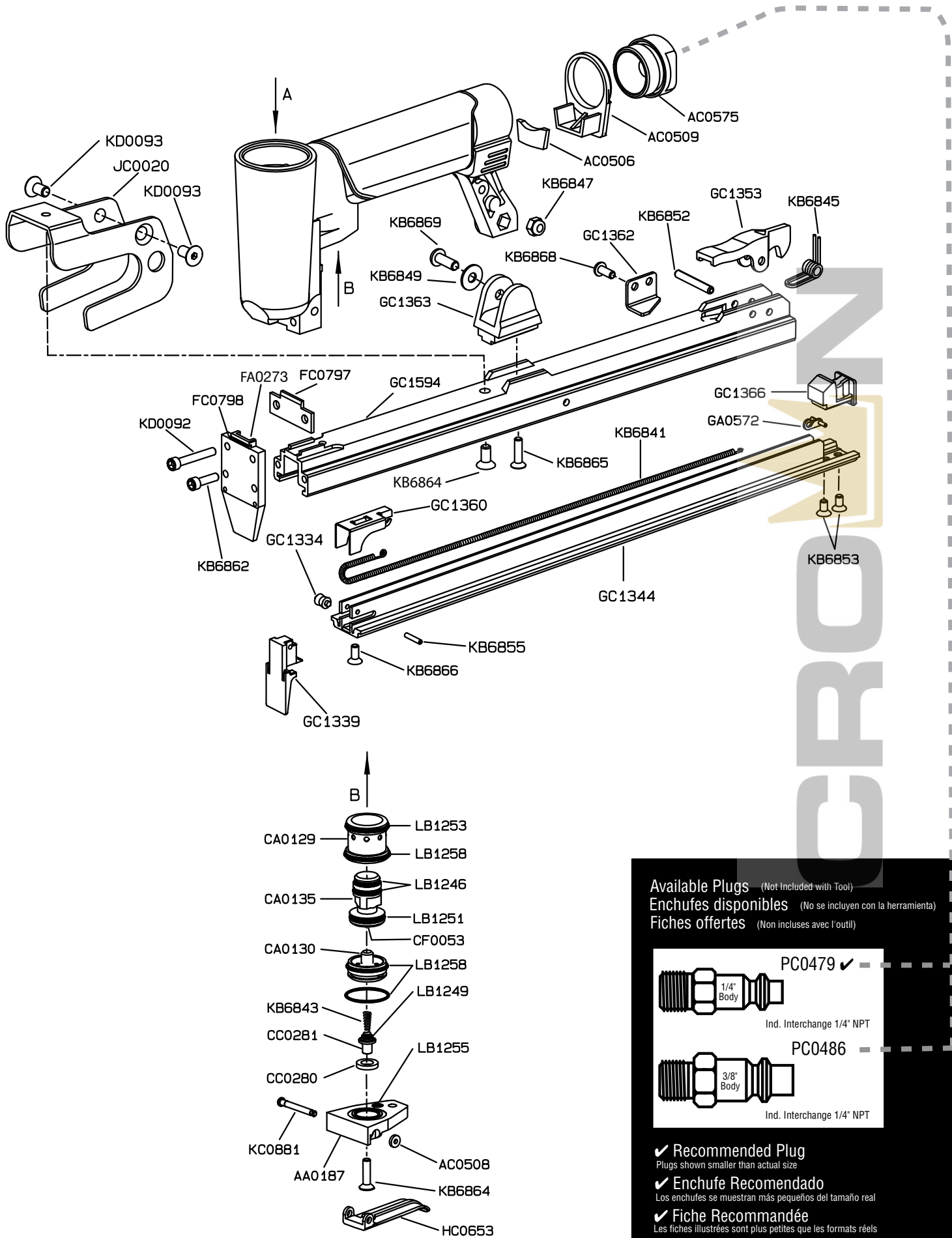
¿Tiene preguntas? ¿Comentarios? Llame a la línea gratuita de acción de Senco: 1-800-543-4596
(sólo para América del Norte y del Sur) o envíe un correo electrónico: toolprof@senco.com

Des questions? Des commentaires? Communiquez avec le service d'assistance sans frais de Senco : 1-800-543-4596
(Amérique du Nord et Amérique du Sud seulement) ou envoyer un courriel: toolprof@senco.com

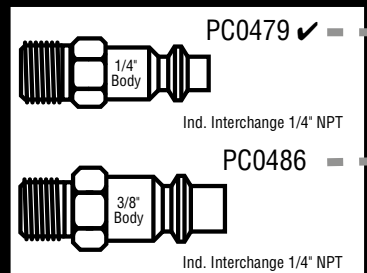


20 Ga. 1/2" Crown Clinching Stapler

DFPXP



Available Plugs (Not Included with Tool)
Enchufes disponibles (No se incluyen con la herramienta)
Fiches offertes (Non incluses avec l'outil)



✓ Recommended Plug

Plugs shown smaller than actual size

✓ Enchufe Recomendado

Los enchufes se muestran más pequeños del tamaño real

✓ Fiche Recommandée

Les fiches illustrées sont plus petites que les formats réels

REPLACEMENT PARTS LIST • LISTA DE PARTES DE REPUESTO • LISTE DE PIÈCES DE RECHANGE

| PART NO. | DESCRIPTION | DESCRIPCIÓN | DÉSIGNATION |
|----------|-------------------|------------------|--------------------|
| AA0187 | TRIGGER PLATE CPL | PLACA DE GATILLO | PLAQUE DE GÂCHETTE |
| AC0506 | SILENCER | SILENCIADOR | SILENCIEUX |
| AC0508 | RETAINER | JUNTA TÓRICA | RETENUE |
| AC0509 | SILENCER CAP | TAPA | BOUCHON |
| AC0575 | END CAP | TAPA | BOUCHON |
| BB0245 | BODY | CARCASA | CORPS |
| BB0247 | JAW PISTON | CILINDRO | CYLINDRE |
| BB0249 | PISTON | PISTON | PISTON |
| BB0250 | ADJUSTER | AMORTIGUADOR | AMORTISSEUR |
| BB0251 | CAP | TAPA | BOUCHON |
| BB0252 | COVER | CUBIERTA | COUVERCLE |
| BC0819 | CYLINDER | CILINDRO | CYLINDRE |
| BC0820 | BUMPER | TOPE | ARRÊT |
| CA0129 | BUSHING | CASQUILLO | DOUILLE |
| CA0130 | TRIGGER | GATILLO | GÂCHETTE |
| CA0135 | VALVE PISTON CPL | VALVULA | VALVE |
| CC0280 | SEAL | SELLO | JOINT |
| CC0281 | REMOTE STEM | STEM REMOTO | STEM REMOTE |
| CF0053 | BUFFER | TOPE | TAMPON |
| EA0358 | DRIVER PISTON | PISTON | PISTON |
| FA0273 | DRIVER PLATE | PLACA | PLAQUE |
| FC0797 | PLATE | PLACA | PLAQUE |
| FC0798 | SEAL | SELLO | JOINT |
| GA0572 | HOOK | GANCHO | CROCHET |
| GC1334 | ROLLER | RODILLO | ROULEAU |
| GC1339 | PLATE | PLACA | PLAQUE |
| GC1344 | RAIL | CARRIL | RAIL |
| GC1353 | LATCH | PESTILLO | LOQUET |
| GC1360 | FEEDER | ALIMENTADOR | CHARGEUR |
| GC1362 | STOP | TOPE | ARRÊT |
| GC1363 | BRACKET | SOPORTE | SUPPORT |
| GC1366 | LATCH | PESTILLO | LOQUET |
| GC1594 | LOADER | CARGADOR | MAGASIN |
| HC0653 | TRIGGER | GATILLO | GÂCHETTE |
| JA0018 | ANVIL (JAW) | YUNQUE | ENCLUME |
| JB0023 | JAW RING | ANILLO | ANNEAU |
| JB0024 | BUSHING | CASQUILLO | DOUILLE |
| JB0025 | BUSHING | CASQUILLO | DOUILLE |
| JB0026 | BUSHING | CASQUILLO | DOUILLE |
| JB0028 | RIGHT PLATE | PLACA | PLAQUE |
| JB0030 | LEFT PLATE | PLACA | PLAQUE |
| JC0016 | GUARD | DEFENSA | PROTECTION |
| JC0017 | YOKE | HORQUILLA | ÉTRIER |
| JC0019 | YOKE | HORQUILLA | ÉTRIER |
| JC0020 | YOKE | HORQUILLA | ÉTRIER |
| KB6841 | SPRING | RESORTE | RESSORT |
| KB6843 | SPRING | RESORTE | RESSORT |
| KB6845 | SPRING | RESORTE | RESSORT |
| KB6847 | NUT | TUERCA | ÉCROU |
| KB6848 | NUT | TUERCA | ÉCROU |
| KB6849 | WASHER | ARANDELA | RONDELLE |
| KB6852 | PIN | PASADOR | GOUPILLE |
| KB6853 | SCREW | TORNILLO | VIS |
| KB6855 | PIN | PASADOR | GOUPILLE |
| KB6857 | PIN | PASADOR | GOUPILLE |
| KB6862 | SCREW | TORNILLO | VIS |
| KB6864 | SCREW | TORNILLO | VIS |
| KB6865 | SCREW | TORNILLO | VIS |
| KB6866 | SCREW | TORNILLO | VIS |
| KB6868 | SCREW | TORNILLO | VIS |
| KB6869 | SCREW | TORNILLO | VIS |
| KC0881 | PIN | PASADOR | GOUPILLE |
| KD0043 | BUSHING | CASQUILLO | DOUILLE |
| KD0044 | SPRING | RESORTE | RESSORT |
| KD0086 | SCREW | TORNILLO | VIS |
| KD0087 | STOP RING | ANILLO | ANNEAU |
| KD0088 | RING | ANILLO | ANNEAU |
| KD0092 | SCREW | TORNILLO | VIS |
| KD0093 | SCREW | TORNILLO | VIS |
| KD0095 | SCREW | TORNILLO | VIS |
| KD0096 | SCREW | TORNILLO | VIS |
| LB1246 | SEAL | SELLO | JOINT |
| LB1247 | SEAL | SELLO | JOINT |
| LB1249 | SEAL | SELLO | JOINT |
| LB1250 | SEAL | SELLO | JOINT |
| LB1251 | SEAL | SELLO | JOINT |
| LB1253 | SEAL | SELLO | JOINT |
| LB1255 | SEAL | SELLO | JOINT |
| LB1256 | SEAL | SELLO | JOINT |
| LB1257 | SEAL | SELLO | JOINT |
| LB1258 | SEAL | SELLO | JOINT |
| LB1261 | SEAL | SELLO | JOINT |
| LB5062 | SEAL | SELLO | JOINT |
| LB5063 | SEAL | SELLO | JOINT |
| LB5064 | SEAL | SELLO | JOINT |
| LB5065 | SEAL | SELLO | JOINT |
| LB5066 | SEAL | SELLO | JOINT |

