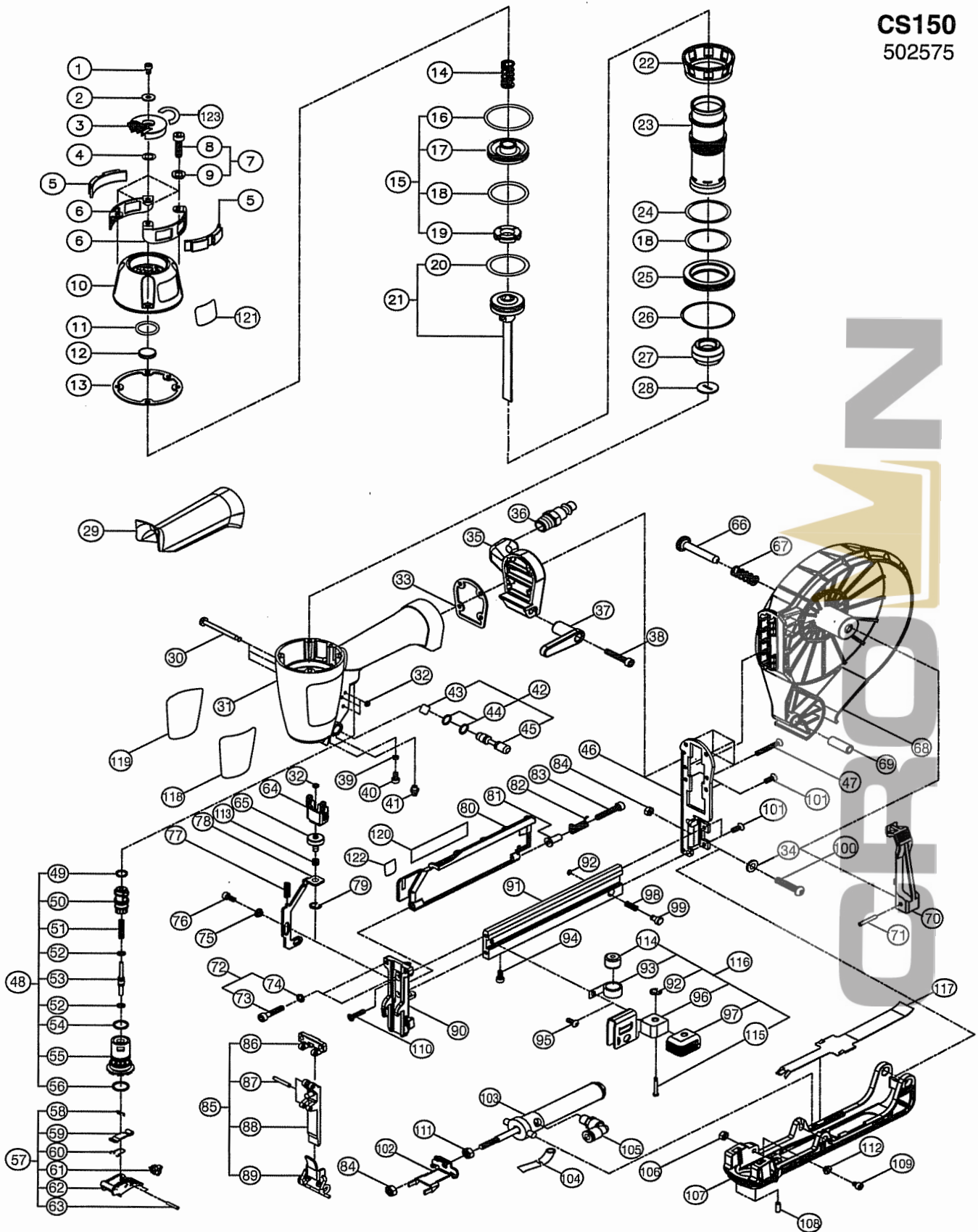


CS150
502575



PARTS LEGEND

CS150,

502575

1	502576	1	Nyloc screw M4*8	63	502639	1	Pin
2	502577	1	Washer 12*5*1	64	502640	1	Safety Guide Plate
3	502578	1	Exhaust Cover	65	502641	1	Safety Adjustment Wheel
* 4	502579	1	O-Ring 8*2.5	66	502642	1	Container Pin
5	502580	2	Cover, Grip	67	502643	1	Spring
6	502581	2	Cap Guard	68	502644	1	Container
7	502582	4	Screw Set M4*25	69	502645	1	Spacer
8	502583	4	Screw M4*25	70	502646	1	Container Latch
9	590042	4	Washer #4*1T	71	502647	1	Pin '4*20
10	502584	1	Cap, Top	72	502648	1	Screw Set M5*22
* 11	502585	1	O-Ring 15*2.5	73	590001	2	Screw M5*22
12	502586	1	Seal, Air	74	590002	2	Washer #5*1.2T
13	502587	1	Gasket	75	502649	1	Spacer
14	502588	1	Spring	76	502650	1	Screw
15	502589	1	Firing Valve Piston Set	77	502651	1	Spring 5.4*26.5L
* 16	502590	1	O-Ring 33.5*2.5	78	502652	1	Release Catch
17	502591	1	Firing Valve Piston	79	502653	1	E-Ring\ M+2A3704
* 18	502592	2	O-Ring 26.59*2.95	80	502654	1	Magazine Cover
19	502593	1	Piston Stopper	81	502655	1	Magazine Cover Spacer
* 20	502595	1	O-Ring 22.4*3.3	82	502656	1	Spring
* 21	502594	1	Piston Driver Assembly W/ O-Ring	83	502657	1	Screw M4*28
22	502600	1	Sleeve Retainer	84	590130	2	Nylon Nut M6
23	502601	1	Cylinder Sleeve	85	502658	1	Outlet Site Cover Set
* 24	502602	1	O-Ring 32*2.5	86	502659	1	Stopper
25	502603	1	Spacer	87	502660	1	Spring Pin 3*28
* 26	502604	1	O-Ring 44.8* 2.6	88	502661	1	Outlet Site Cover
* 27	502605	1	Bumper	89	502662	1	Outlet Site Catch Assy.
28	502606	1	Nozzle Washer	90	502663	1	Outlet Site
29	502607	1	Handle Grip	91	502664	1	Magazine
30	502608	1	Trigger Pin	92	590028	2	E-Ring '2.5
31	502609	1	Body	93	502665	1	Spring Set
* 32	502610	4	Pin Retainer '5.5*2	94	502666	1	Nylock Screw M4*10
33	502611	1	Gasket	95	502667	1	B.H.C.S. M4*4
34	502612	1	Washer '12.5*1.6T	96	502668	1	Pusher
35	502613	1	Tail Cover	97	502669	1	Pusher Grip
36	502614	1	Air Plug	98	502670	1	Compression Spring
37	502615	1	Belt Hook	99	502671	1	Lock Pin
38	590055	1	Screw M5*20	100	502672	1	B.H.C.S. Screw M6*50
* 39	502616	1	O-Ring 2.5*1.5 (Blue)	101	502673	4	Screw M4*10
40	590043	1	Screw M4*8	102	502674	1	Pusher
41	502617	1	FW Air Plug	103	502675	1	Cylinder Set
42	502618	1	Control Valve Rod Set	104	502676	1	Black Hose
43	502619	1	Label	105	502677	1	SPL601 Air Plug
* 44	502620	2	O-Ring 5.8*1.9	106	502678	1	Nylon Nut M4
45	502621	1	Control Valve Rod	107	502679	1	Tray
46	502622	1	Support	108	502680	2	Wear Pad
47	502623	4	Screw M4*30	109	502681	1	Nylock Screw M4*12
48	502624	1	Trigger Valve Set	110	502682	1	F.H.C. Screw M3*12
* 49	502625	1	O-Ring 8*1.8	111	590148	1	Hex Nut M6
50	502626	1	Trigger Valve Head	112	502686	1	Spacer
51	502627	1	Spring	113	502687	1	Spring
* 52	502628	2	O-Ring 2.6*1.2	114	502688	1	Wheel
53	502629	1	Trigger Valve Stem	115	502689	1	Step Pin 3.5*16.3
* 54	502630	1	O-Ring 12.5*1.8	116	502690	1	Pusher Set
55	502631	1	Trigger Valve Guide	117	502683	1	Plate
* 56	502632	1	O-Ring 14*1.8	118	502441	1	Housing Label, Left
57	502633	1	Trigger Set	119	502442	1	Housing Label, Right
58	502634	1	Extention Spring	** 120	502443	1	Model/ Warning Label
59	502635	1	Releasing Blade	121	502444	2	Name Plate
60	502636	1	Trigger Spring	122	502692	1	Depth adjustment label
61	502637	1	Trigger Guide	123	502693	1	Directional label
62	502638	1	Trigger				

* Denotes Normal Wear Item

** Make sure Warning Label (502443) is properly affixed. Replace if Necessary. Label Available at no Charge through the Service Parts Dept.

→ Denotes New Change