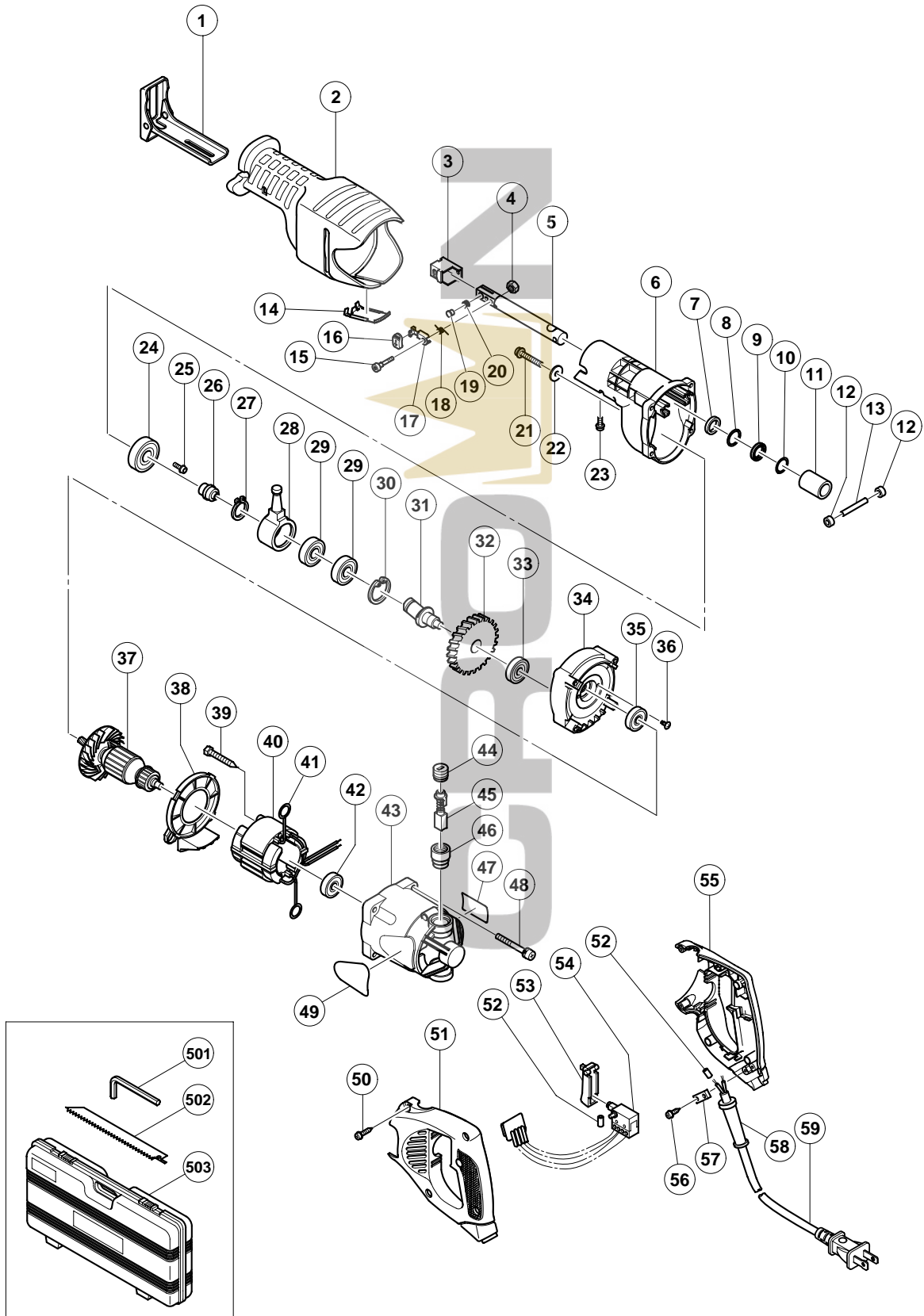


ELECTRIC TOOL PARTS LIST

■ RECIPROCATING SAW
Model CR 13V

2003 • 6 • 10
(E1)



PARTS

CR 13V

ITEM NO.	CODE NO.	DESCRIPTION	NO. USED	REMARKS
1	321-116	BASE (B)	1	
2	321-125	FRONT COVER (C)	1	
3	321-132	BLADE HOLDER (A)	1	
4	949-554	NUT M4 (10 PCS.)	1	
5	321-120	PLUNGER (B)	1	
6	321-123	GEAR COVER (B)	1	
7	318-458	FELT WASHER	1	
8	321-117	WASHER (H)	1	
9	318-459	V-RING	1	
10	321-118	O-RING	1	
11	321-214	METAL (B)	1	
12	321-136	SWING ROLLER	2	
13	318-491	PIN D6	1	
14	321-126	COVER CLIP	1	
15	322-134	SPECIAL BOLT M4	1	
16	321-130	CAP	1	
17	321-131	LEVER (A)	1	
18	321-135	SPRING (D)	1	
19	321-134	HOLDER PIN (B)	1	
20	318-483	SPRING (B)	1	
21	318-451	NYLOCK BOLT (W/FLANGE) M6X35	1	
22	318-452	WASHER (G)	1	
23	322-142	NYLOCK BOLT (W/FLANGE) M5X12	1	
24	600-2DD	BALL BEARING 6002DDCMPS2L	1	
25	317-196	NYLOCK BOLT (W/FLANGE) M4X12	3	
26	322-119	SUB SHAFT (B)	1	
27	967-261	RETAINING RING FOR D17 SHAFT	1	
28	322-118	RECIPRO PLATE	1	
29	600-3VV	BALL BEARING 6003VVCMP2L	2	
30	939-556	RETAINING RING FOR D35 HOLE (10 PCS.)	1	
31	321-128	SECOND SHAFT (B)	1	
32	318-473	GEAR	1	
33	608-VVM	BALL BEARING 608VVC2PS2L	1	
34	321-124	INNER COVER (B)	1	
35	600-1VV	BALL BEARING 6001VVCMP2L	1	
36	314-430	SLOTTED HD. SCREW (SEAL LOCK) M4X10	2	
37	360-616U	ARMATURE ASS'Y 120V	1	INCLUD. 35, 42
38	321-122	FAN GUIDE	1	
39	953-174	HEX. HD. TAPPING SCREW D5X55	2	
40	340-563G	STATOR ASS'Y 120V	1	INCLUD. 41
41	930-703	BRUSH TERMINAL	2	
42	608-VVM	BALL BEARING 608VVC2PS2L	1	
43	322-120	HOUSING	1	
44	945-161	BRUSH CAP	2	
45	999-043	CARBON BRUSH (1 PAIR)	2	
46	958-900	BRUSH HOLDER	2	
47		NAME PLATE	1	
48	307-224	MACHINE SCREW (W/WASHERS) M5X60 (BLACK)	4	
49		HITACHI LABEL	1	
50	307-028	TAPPING SCREW (W/FLANGE) D4X25 (BLACK)	5	
51	322-122	HANDLE (D)	1	

STANDARD ACCESSORIES

CR 13V

ITEM NO.	CODE NO.	DESCRIPTION	NO. USED	REMARKS
501	944-458	HEX. BAR WRENCH 4MM	1	
502	318-621	SABER SAW BLADES NO.132 203L (5 PCS.)	1	
503	321-142	CASE	1	

OPTIONAL ACCESSORIES

ITEM NO.	CODE NO.	DESCRIPTION	NO. USED	REMARKS
601	959-610	SABER SAW BLADES NO.1 (5 PCS.)	1	
602	958-182	SABER SAW BLADES NO.2 (5 PCS.)	1	
603	958-183	SABER SAW BLADES NO.3 (5 PCS.)	1	
604	959-611	SABER SAW BLADES NO.4 (5 PCS.)	1	
605	958-185	SABER SAW BLADES NO.5 (5 PCS.)	1	
606	958-188	SABER SAW BLADES NO.8 (5 PCS.)	1	
607	996-427	SABER SAW BLADES NO.9 (3 PCS.)	1	
608	318-611	SABER SAW BLADES NO.101 150L P.10 (5 PCS.)	1	
609	318-612	SABER SAW BLADES NO.102 228L P.10 (5 PCS.)	1	
610	318-613	SABER SAW BLADES NO.103 150L P.14 (5 PCS.)	1	
611	318-614	SABER SAW BLADES NO.104 228L P.14 (5 PCS.)	1	
612	318-615	SABER SAW BLADES NO.105 150L P.18 (5 PCS.)	1	
613	318-616	SABER SAW BLADES NO.106 228L P.18 (5 PCS.)	1	
614	318-617	SABER SAW BLADES NO.107 150L P.24 (5 PCS.)	1	
615	318-618	SABER SAW BLADES NO.108 228L P.24 (5 PCS.)	1	
616	318-619	SABER SAW BLADES NO.121 305L P.6 (5 PCS.)	1	
617	318-620	SABER SAW BLADES NO.131 305L P.10/14 (5 PCS.)	1	
618	321-113	CUT-OFF GUIDE ASS'Y (L)	1	INCLUD. 619-631
619	996-423	NUT LEVER	1	
620	996-422	CHAIN BOLT	1	
621	996-421	GUIDE BAR	2	
622	996-424	SLIDE PLATE	1	
623	949-755	HEX. SOCKET HD. BOLT M6X16 (10 PCS.)	2	
624	321-116	BASE (B)	1	
625	321-427	PLATE (B)	1	
626	321-428	BASE SLEEVE	2	
627	949-665	HEX. SOCKET HD. BOLT M5X14 (10 PCS.)	2	
628	949-755	HEX. SOCKET HD. BOLT M6X16 (10 PCS.)	2	
629	949-425	WASHER M6 (10 PCS.)	2	
630	944-458	HEX. BAR WRENCH 4MM	1	
631	944-459	HEX. BAR WRENCH 5MM	1	